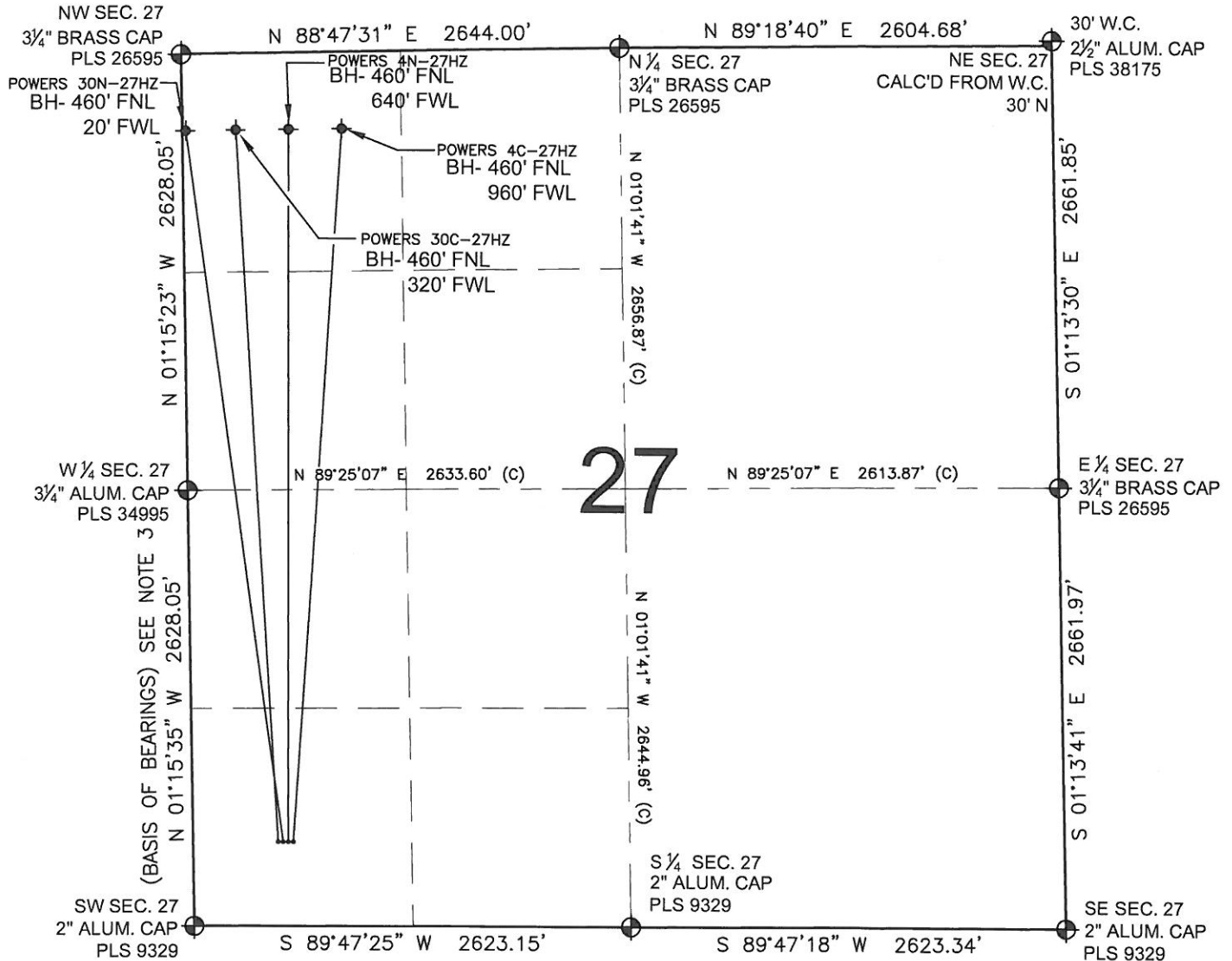


SECTION 27, TOWNSHIP 2 NORTH, RANGE 65 WEST, 6TH P.M.



LEGEND

- ⊕ = EXISTING MONUMENT ⊕ = BOTTOM HOLE BH= BOTTOM HOLE
 • = PROPOSED WELL ◆ = EXISTING WELL

NOTES:

1. THIS FIELD SURVEY CONFORMS TO THE MINIMUM STANDARDS SET BY THE C.O.G.C.C., RULE NO. 215
2. HORIZONTAL POSITIONS AND ORTHOMETRIC ELEVATIONS SHOWN AT THE WELL HEAD, ARE BASED ON GPS-RTK POSITIONS DERIVED FROM MINIMUM 2-HOUR STATIC OBSERVATIONS CORRECTED BY THE NATIONAL GEODETIC SURVEY ONLINE POSITIONING USER SERVICE, O.P.U.S. DATUM: HORIZONTAL = NAD83/2007, VERTICAL = NAVD88
3. THE BASIS OF BEARINGS ARE STATE PLANE COORDINATE SYSTEM GRID BEARINGS SHOWN HEREON BETWEEN THE DESCRIBED MONUMENTS SHOWN HEREON.
4. GRID DISTANCES ARE SHOWN, AS MEASURED IN THE FIELD, WITH TIES TO WELLS MEASURED PERPENDICULAR TO SECTION LINES.

NOTES:

- POWERS 30C-27HZ TO BE AT 510' FSL, 510' FWL.
 BOTTOM HOLE AT 460' FNL & 320' FWL
 POWERS 30N-27HZ TO BE AT 510' FSL, 540' FWL.
 BOTTOM HOLE AT 460' FNL & 20' FWL.
 POWERS 4N-27HZ TO BE AT 510' FSL, 570' FWL.
 BOTTOM HOLE AT 460' FNL & 640' FWL.
 POWERS 4C-27HZ TO BE AT 510' FSL, 600' FWL.
 BOTTOM HOLE AT 460' FNL & 960' FWL.

PREPARED BY:

PFS

 Petroleum Field Services, LLC
 1801 W. 13th Ave.
 Denver, CO 80204

KERR-MCGEE OIL & GAS ONSHORE LP

 FIELD DATE:
 07-03-12

 PAD NAME:
 POWERS 4 PAD

 DRAWING DATE:
 07-10-12

SURFACE LOCATION:

BY: KAG REV: SMF

WELD COUNTY, COLORADO

SW 1/4 SW 1/4, SEC. 27, T2N, R65W, 6TH P.M.



0 500 1000

SCALE: 1"=1000'