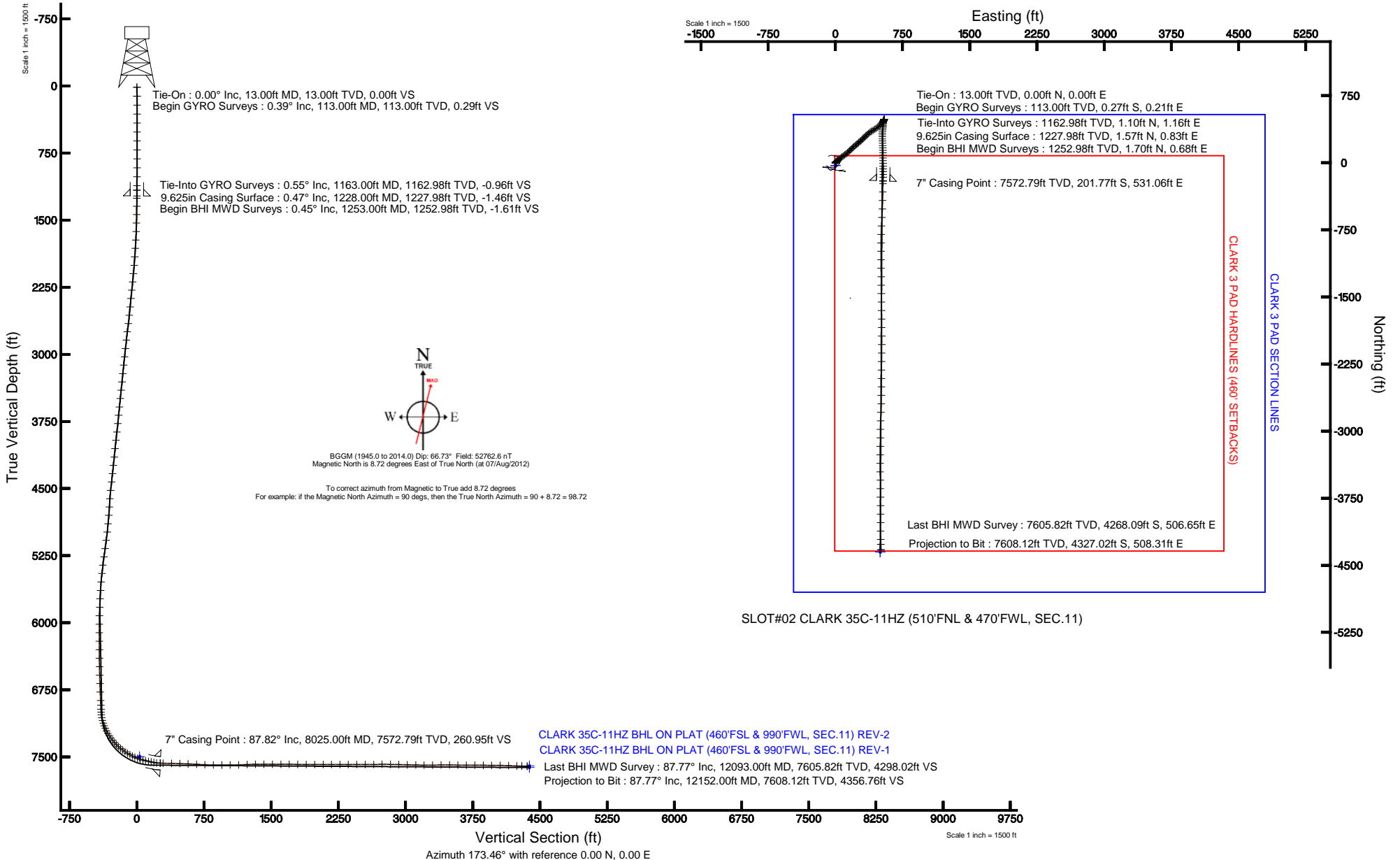


KERR-MCGEE OIL & GAS ONSHORE LP

Location: COLORADO Slot: SLOT#02 CLARK 35C-11HZ (510'FNL & 470'FWL, SEC.11)
 Field: WELD COUNTY (KERR MCGEE) Well: CLARK 35C-11HZ
 Facility: SEC.11-T1N-R66W Wellbore: CLARK 35C-11HZ PWB

Plot reference wellpath is CLARK 35C-11HZ (REV-D.0) PWB

True vertical depths are referenced to ENSIGN 145 (RKB)	Grid System: NAD83 / Lambert Colorado SP, Northern Zone (501), US feet
Measured depths are referenced to ENSIGN 145 (RKB)	North Reference: True north
ENSIGN 145 (RKB) to Mean Sea Level: 5119 feet	Scale: True distance
Mean Sea Level to Mud line (At Slot: SLOT#02 CLARK 35C-11HZ (510'FNL & 470'FWL, SEC.11)): 0 feet	Depths are in feet
Coordinates are in feet referenced to Slot	Created by: augunora on 12/Sep/2012





Actual Wellpath Report

CLARK 35C-11HZ AWP

Page 1 of 7



REFERENCE WELLPATH IDENTIFICATION

Operator	KERR-MCGEE OIL & GAS ONSHORE LP	Slot	SLOT#02 CLARK 35C-11HZ (510'FNL & 470'FWL, SEC.11)
Area	COLORADO	Well	CLARK 35C-11HZ
Field	WELD COUNTY (KERR MCGEE)	Wellbore	CLARK 35C-11HZ AWB
Facility	SEC.11-T1N-R66W		

REPORT SETUP INFORMATION

Projection System	NAD83 / Lambert Colorado SP, Northern Zone (501), US feet	Software System	WellArchitect® 3.0.0
North Reference	True	User	Augunora
Scale	0.999962	Report Generated	12/Sep/2012 at 13:20
Convergence at slot	0.48° East	Database/Source file	WA_ANADARKO/CLARK_35C-11HZ_AWB.xml

WELLPATH LOCATION

	Local coordinates		Grid coordinates		Geographic coordinates	
	North[ft]	East[ft]	Easting[US ft]	Northing[US ft]	Latitude	Longitude
Slot Location	30.26	0.00	3209320.35	1269875.48	40°04'18.390"N	104°45'07.348"W
Facility Reference Pt			3209320.61	1269845.23	40°04'18.091"N	104°45'07.348"W
Field Reference Pt			3197771.84	1268891.29	40°04'09.600"N	104°47'36.000"W

WELLPATH DATUM

Calculation method	Minimum curvature	ENSIGN 145 (RKB) to Facility Vertical Datum	5119.00ft
Horizontal Reference Pt	Slot	ENSIGN 145 (RKB) to Mean Sea Level	5119.00ft
Vertical Reference Pt	ENSIGN 145 (RKB)	ENSIGN 145 (RKB) to Mud Line at Slot (SLOT#02 CLARK 35C-11HZ (510'FNL & 470'FWL, SEC.11))	5119.00ft
MD Reference Pt	ENSIGN 145 (RKB)	Section Origin	N 0.00, E 0.00 ft
Field Vertical Reference	Mean Sea Level	Section Azimuth	173.30°



Actual Wellpath Report

CLARK 35C-11HZ AWP

Page 2 of 7



REFERENCE WELLPATH IDENTIFICATION

Operator	KERR-MCGEE OIL & GAS ONSHORE LP	Slot	SLOT#02 CLARK 35C-11HZ (510'FNL & 470'FWL, SEC.11)
Area	COLORADO	Well	CLARK 35C-11HZ
Field	WELD COUNTY (KERR MCGEE)	Wellbore	CLARK 35C-11HZ AWB
Facility	SEC.11-T1N-R66W		

WELLPATH DATA (154 stations) † = interpolated/extrapolated station

MD [ft]	Inclination [°]	Azimuth [°]	TVD [ft]	Vert Sect [ft]	North [ft]	East [ft]	Latitude	Longitude	DLS [°/100ft]	Comments
0.00†	0.000	141.280	0.00	0.00	0.00	0.00	40°04'18.390"N	104°45'07.348"W	0.00	
13.00	0.000	141.280	13.00	0.00	0.00	0.00	40°04'18.390"N	104°45'07.348"W	0.00	Tie-On
113.00	0.390	141.280	113.00	0.29	-0.27	0.21	40°04'18.387"N	104°45'07.345"W	0.39	Begin GYRO Surveys
213.00	0.350	107.200	213.00	0.70	-0.62	0.72	40°04'18.384"N	104°45'07.339"W	0.22	
313.00	0.200	98.870	313.00	0.87	-0.74	1.18	40°04'18.383"N	104°45'07.335"W	0.15	
413.00	0.180	78.160	413.00	0.90	-0.73	1.51	40°04'18.383"N	104°45'07.329"W	0.07	
513.00	0.200	120.300	513.00	1.00	-0.79	1.81	40°04'18.382"N	104°45'07.325"W	0.14	
613.00	0.300	124.040	612.99	1.27	-1.02	2.18	40°04'18.380"N	104°45'07.320"W	0.10	
713.00	0.130	108.890	712.99	1.49	-1.21	2.50	40°04'18.378"N	104°45'07.316"W	0.18	
813.00	0.110	103.690	812.99	1.57	-1.27	2.70	40°04'18.377"N	104°45'07.313"W	0.02	
913.00	0.600	311.480	912.99	1.22	-0.94	2.41	40°04'18.381"N	104°45'07.317"W	0.70	
1013.00	0.640	325.120	1012.99	0.33	-0.14	1.69	40°04'18.389"N	104°45'07.326"W	0.15	
1113.00	0.440	349.040	1112.98	-0.54	0.70	1.30	40°04'18.397"N	104°45'07.331"W	0.30	
1163.00	0.550	333.420	1162.98	-0.96	1.10	1.16	40°04'18.401"N	104°45'07.333"W	0.35	Tie-Into GYRO Surveys
1253.00	0.450	306.980	1252.98	-1.61	1.70	0.68	40°04'18.407"N	104°45'07.339"W	0.28	Begin BHI MWD Surveys
1345.00	0.580	2.540	1344.97	-2.32	2.38	0.41	40°04'18.414"N	104°45'07.343"W	0.54	
1437.00	1.070	343.800	1436.96	-3.62	3.67	0.20	40°04'18.426"N	104°45'07.345"W	0.60	
1532.00	1.980	33.870	1531.93	-5.75	5.89	0.86	40°04'18.448"N	104°45'07.337"W	1.61	
1627.00	3.250	47.550	1626.83	-8.57	9.07	3.76	40°04'18.480"N	104°45'07.300"W	1.48	
1722.00	4.620	41.150	1721.61	-12.71	13.77	8.27	40°04'18.526"N	104°45'07.242"W	1.51	
1816.00	6.140	44.970	1815.19	-18.37	20.17	14.31	40°04'18.589"N	104°45'07.164"W	1.66	
1911.00	7.150	52.090	1909.55	-24.58	27.40	22.57	40°04'18.661"N	104°45'07.058"W	1.37	
2006.00	9.210	52.790	2003.58	-31.50	35.63	33.29	40°04'18.742"N	104°45'06.920"W	2.17	
2101.00	10.680	53.800	2097.15	-39.70	45.43	46.45	40°04'18.839"N	104°45'06.751"W	1.56	
2196.00	10.440	51.570	2190.54	-48.56	55.98	60.30	40°04'18.943"N	104°45'06.572"W	0.50	
2290.00	11.510	53.490	2282.82	-57.70	66.85	74.51	40°04'19.051"N	104°45'06.390"W	1.20	
2385.00	11.420	52.610	2375.93	-67.21	78.20	89.60	40°04'19.163"N	104°45'06.196"W	0.21	
2480.00	10.650	53.340	2469.17	-76.40	89.15	104.11	40°04'19.271"N	104°45'06.009"W	0.82	
2575.00	11.230	53.130	2562.44	-85.43	99.95	118.55	40°04'19.378"N	104°45'05.823"W	0.61	
2670.00	11.590	45.200	2655.57	-95.97	112.22	132.73	40°04'19.499"N	104°45'05.641"W	1.69	
2765.00	10.920	43.530	2748.74	-107.61	125.47	145.69	40°04'19.630"N	104°45'05.474"W	0.78	
2859.00	10.240	51.610	2841.15	-117.70	137.11	158.38	40°04'19.745"N	104°45'05.311"W	1.73	
2954.00	10.590	45.530	2934.59	-127.48	148.47	171.23	40°04'19.857"N	104°45'05.145"W	1.21	
3049.00	9.460	43.810	3028.14	-137.80	160.22	182.86	40°04'19.973"N	104°45'04.996"W	1.23	
3144.00	10.030	48.890	3121.77	-147.44	171.30	194.50	40°04'20.083"N	104°45'04.846"W	1.09	
3239.00	10.510	49.680	3215.24	-156.91	182.34	207.34	40°04'20.192"N	104°45'04.681"W	0.53	
3333.00	10.880	50.170	3307.61	-166.50	193.57	220.69	40°04'20.303"N	104°45'04.509"W	0.41	
3428.00	10.180	50.130	3401.01	-176.00	204.70	234.02	40°04'20.413"N	104°45'04.338"W	0.74	
3523.00	10.590	49.450	3494.45	-185.45	215.75	247.09	40°04'20.522"N	104°45'04.170"W	0.45	
3618.00	9.650	48.940	3587.97	-194.81	226.66	259.73	40°04'20.630"N	104°45'04.007"W	0.99	
3713.00	9.790	48.030	3681.61	-203.97	237.29	271.74	40°04'20.735"N	104°45'03.853"W	0.22	
3807.00	9.960	49.130	3774.22	-213.15	247.96	283.83	40°04'20.840"N	104°45'03.697"W	0.27	
3902.00	10.150	44.140	3867.76	-223.05	259.34	295.87	40°04'20.953"N	104°45'03.542"W	0.94	
3997.00	10.560	45.800	3961.21	-233.63	271.41	307.94	40°04'21.072"N	104°45'03.387"W	0.53	
4092.00	8.980	46.330	4054.83	-243.39	282.60	319.54	40°04'21.183"N	104°45'03.238"W	1.67	



Actual Wellpath Report

CLARK 35C-11HZ AWP

Page 3 of 7



REFERENCE WELLPATH IDENTIFICATION

Operator	KERR-MCGEE OIL & GAS ONSHORE LP	Slot	SLOT#02 CLARK 35C-11HZ (510'FNL & 470'FWL, SEC.11)
Area	COLORADO	Well	CLARK 35C-11HZ
Field	WELD COUNTY (KERR MCGEE)	Wellbore	CLARK 35C-11HZ AWB
Facility	SEC.11-T1N-R66W		

WELLPATH DATA (154 stations)

MD [ft]	Inclination [°]	Azimuth [°]	TVD [ft]	Vert Sect [ft]	North [ft]	East [ft]	Latitude	Longitude	DLS [°/100ft]	Comments
4187.00	9.390	43.280	4148.62	-252.83	293.37	330.22	40°04'21.289"N	104°45'03.100"W	0.67	
4281.00	10.030	48.430	4241.27	-262.45	304.38	341.60	40°04'21.398"N	104°45'02.954"W	1.15	
4376.00	11.220	49.250	4334.64	-272.35	315.90	354.79	40°04'21.512"N	104°45'02.784"W	1.26	
4471.00	10.840	47.840	4427.88	-282.71	327.93	368.42	40°04'21.631"N	104°45'02.609"W	0.49	
4566.00	10.680	47.160	4521.21	-293.08	339.91	381.49	40°04'21.749"N	104°45'02.441"W	0.21	
4661.00	9.840	61.210	4614.71	-301.33	349.81	395.06	40°04'21.847"N	104°45'02.266"W	2.77	
4756.00	9.560	63.550	4708.35	-307.05	357.23	409.24	40°04'21.920"N	104°45'02.084"W	0.51	
4850.00	10.750	59.860	4800.88	-313.17	365.11	423.81	40°04'21.998"N	104°45'01.896"W	1.44	
4945.00	11.410	54.420	4894.11	-321.24	375.03	439.12	40°04'22.096"N	104°45'01.699"W	1.30	
5040.00	11.600	53.260	4987.20	-330.56	386.21	454.41	40°04'22.207"N	104°45'01.503"W	0.32	
5135.00	13.310	48.700	5079.96	-341.55	399.14	470.29	40°04'22.334"N	104°45'01.299"W	2.08	
5230.00	13.160	45.980	5172.44	-354.31	413.87	486.28	40°04'22.480"N	104°45'01.093"W	0.67	
5324.00	12.550	46.290	5264.08	-366.95	428.37	501.35	40°04'22.623"N	104°45'00.899"W	0.65	
5419.00	11.680	49.090	5356.97	-378.57	441.80	516.08	40°04'22.756"N	104°45'00.709"W	1.10	
5514.00	8.720	29.440	5450.49	-389.80	454.37	526.90	40°04'22.880"N	104°45'00.570"W	4.77	
5609.00	5.210	30.890	5544.77	-399.03	464.35	532.65	40°04'22.979"N	104°45'00.496"W	3.70	
5704.00	4.770	38.750	5639.41	-405.22	471.13	537.34	40°04'23.046"N	104°45'00.436"W	0.85	
5799.00	3.680	32.260	5734.15	-410.36	476.79	541.44	40°04'23.102"N	104°45'00.383"W	1.25	
5894.00	2.710	17.230	5829.00	-414.79	481.51	543.73	40°04'23.148"N	104°45'00.354"W	1.34	
5989.00	1.250	358.310	5923.95	-417.87	484.69	544.37	40°04'23.180"N	104°45'00.346"W	1.66	
6084.00	0.410	329.480	6018.94	-419.22	486.02	544.16	40°04'23.193"N	104°45'00.348"W	0.96	
6179.00	0.660	252.000	6113.93	-419.42	486.15	543.47	40°04'23.194"N	104°45'00.357"W	0.73	
6273.00	0.840	224.370	6207.92	-418.88	485.49	542.47	40°04'23.188"N	104°45'00.370"W	0.42	
6368.00	0.670	229.820	6302.92	-418.14	484.63	541.56	40°04'23.179"N	104°45'00.382"W	0.19	
6463.00	0.370	285.340	6397.91	-417.94	484.35	540.84	40°04'23.176"N	104°45'00.391"W	0.58	
6558.00	0.780	183.900	6492.91	-417.42	483.79	540.50	40°04'23.171"N	104°45'00.395"W	0.98	
6653.00	2.120	189.700	6587.88	-415.10	481.41	540.16	40°04'23.147"N	104°45'00.400"W	1.42	
6747.00	1.670	193.070	6681.82	-412.15	478.36	539.56	40°04'23.117"N	104°45'00.407"W	0.49	
6842.00	2.690	198.570	6776.75	-408.83	474.90	538.54	40°04'23.083"N	104°45'00.421"W	1.09	
6937.00	2.960	201.780	6871.64	-404.66	470.51	536.91	40°04'23.040"N	104°45'00.441"W	0.33	
6990.00	2.900	203.820	6924.57	-402.30	468.01	535.87	40°04'23.015"N	104°45'00.455"W	0.23	
7035.00	2.530	206.420	6969.52	-400.49	466.08	534.96	40°04'22.996"N	104°45'00.467"W	0.87	
7067.00	4.070	196.420	7001.47	-398.85	464.36	534.33	40°04'22.979"N	104°45'00.475"W	5.12	
7098.00	7.520	185.280	7032.30	-395.85	461.28	533.83	40°04'22.948"N	104°45'00.481"W	11.65	
7130.00	11.250	182.220	7063.87	-390.72	456.08	533.52	40°04'22.897"N	104°45'00.485"W	11.76	
7161.00	15.490	182.640	7094.02	-383.64	448.92	533.21	40°04'22.826"N	104°45'00.489"W	13.68	
7193.00	19.050	185.610	7124.58	-374.32	439.45	532.50	40°04'22.733"N	104°45'00.498"W	11.46	
7225.00	22.370	184.950	7154.50	-363.25	428.18	531.47	40°04'22.621"N	104°45'00.512"W	10.40	
7256.00	24.270	183.400	7182.97	-351.20	415.94	530.58	40°04'22.500"N	104°45'00.523"W	6.44	
7288.00	26.780	183.290	7211.84	-337.62	402.18	529.77	40°04'22.364"N	104°45'00.533"W	7.85	
7319.00	29.630	187.930	7239.16	-323.33	387.61	528.32	40°04'22.220"N	104°45'00.552"W	11.59	
7351.00	33.260	187.020	7266.46	-307.14	371.06	526.15	40°04'22.057"N	104°45'00.580"W	11.44	
7383.00	37.040	184.270	7292.62	-289.15	352.73	524.36	40°04'21.876"N	104°45'00.603"W	12.80	
7414.00	39.330	181.850	7316.99	-270.26	333.60	523.35	40°04'21.687"N	104°45'00.616"W	8.82	
7446.00	41.330	180.420	7341.38	-249.75	312.90	522.94	40°04'21.482"N	104°45'00.621"W	6.89	

REFERENCE WELLPATH IDENTIFICATION

Operator	KERR-MCGEE OIL & GAS ONSHORE LP	Slot	SLOT#02 CLARK 35C-11HZ (510'FNL & 470'FWL, SEC.11)
Area	COLORADO	Well	CLARK 35C-11HZ
Field	WELD COUNTY (KERR MCGEE)	Wellbore	CLARK 35C-11HZ AWB
Facility	SEC.11-T1N-R66W		

WELLPATH DATA (154 stations) † = interpolated/extrapolated station

MD [ft]	Inclination [°]	Azimuth [°]	TVD [ft]	Vert Sect [ft]	North [ft]	East [ft]	Latitude	Longitude	DLS [°/100ft]	Comments
7477.00	44.580	179.430	7364.07	-228.77	291.78	522.98	40°04'21.273"N	104°45'00.621"W	10.71	
7509.00	47.820	178.030	7386.21	-205.78	268.69	523.50	40°04'21.045"N	104°45'00.614"W	10.61	
7541.00	50.940	177.440	7407.05	-181.57	244.42	524.46	40°04'20.805"N	104°45'00.602"W	9.85	
7572.00	53.770	176.930	7425.98	-157.08	219.91	525.67	40°04'20.563"N	104°45'00.586"W	9.22	
7604.00	55.710	176.510	7444.45	-131.00	193.83	527.16	40°04'20.305"N	104°45'00.567"W	6.16	
7636.00	57.870	177.490	7461.98	-104.28	167.09	528.56	40°04'20.041"N	104°45'00.549"W	7.22	
7667.00	61.090	178.190	7477.72	-77.66	140.41	529.56	40°04'19.777"N	104°45'00.536"W	10.57	
7699.00	63.250	178.560	7492.65	-49.48	112.12	530.37	40°04'19.498"N	104°45'00.526"W	6.83	
7730.00	65.260	178.940	7506.12	-21.68	84.21	530.97	40°04'19.222"N	104°45'00.518"W	6.58	
7762.00	68.980	179.580	7518.56	7.63	54.73	531.35	40°04'18.931"N	104°45'00.513"W	11.77	
7794.00	73.220	179.220	7528.92	37.73	24.47	531.67	40°04'18.632"N	104°45'00.509"W	13.29	
7825.00	75.720	179.240	7537.22	67.44	-5.40	532.07	40°04'18.337"N	104°45'00.504"W	8.06	
7857.00	76.670	179.700	7544.86	98.33	-36.47	532.36	40°04'18.030"N	104°45'00.500"W	3.28	
7889.00	77.130	180.160	7552.11	129.29	-67.64	532.40	40°04'17.722"N	104°45'00.500"W	2.01	
7920.00	77.490	179.160	7558.92	159.35	-97.88	532.58	40°04'17.423"N	104°45'00.497"W	3.35	
7952.00	80.010	179.530	7565.16	190.55	-129.26	532.94	40°04'17.113"N	104°45'00.493"W	7.96	
7983.00	83.410	181.460	7569.63	220.98	-159.93	532.67	40°04'16.810"N	104°45'00.496"W	12.58	
8023.00	87.750	182.880	7572.71	260.38	-199.77	531.16	40°04'16.416"N	104°45'00.516"W	11.41	
8025.00†	87.817	182.766	7572.79	262.35	-201.77	531.06	40°04'16.396"N	104°45'00.517"W	6.62	7" Casing Point
8055.00	88.820	181.050	7573.67	291.99	-231.74	530.06	40°04'16.100"N	104°45'00.530"W	6.62	
8150.00	89.070	180.670	7575.42	386.15	-326.71	528.63	40°04'15.161"N	104°45'00.548"W	0.48	
8244.00	88.020	181.730	7577.81	479.23	-420.65	526.67	40°04'14.233"N	104°45'00.574"W	1.59	
8339.00	87.980	182.190	7581.12	573.09	-515.54	523.42	40°04'13.295"N	104°45'00.615"W	0.49	
8434.00	86.560	182.790	7585.65	666.76	-610.34	519.30	40°04'12.358"N	104°45'00.668"W	1.62	
8529.00	87.310	184.020	7590.73	760.15	-705.03	513.66	40°04'11.423"N	104°45'00.741"W	1.51	
8624.00	89.600	180.780	7593.29	853.90	-799.90	509.69	40°04'10.485"N	104°45'00.792"W	4.18	
8719.00	90.240	180.700	7593.42	948.10	-894.89	508.46	40°04'09.546"N	104°45'00.808"W	0.68	
8813.00	89.900	180.410	7593.31	1041.35	-988.88	507.55	40°04'08.618"N	104°45'00.820"W	0.48	
8908.00	92.090	179.490	7591.66	1135.69	-1083.86	507.63	40°04'07.679"N	104°45'00.819"W	2.50	
9003.00	92.670	178.920	7587.71	1230.10	-1178.77	508.95	40°04'06.741"N	104°45'00.802"W	0.86	
9098.00	90.860	179.590	7584.79	1324.54	-1273.71	510.19	40°04'05.803"N	104°45'00.786"W	2.03	
9193.00	89.500	179.260	7584.49	1418.99	-1368.71	511.14	40°04'04.864"N	104°45'00.774"W	1.47	
9287.00	90.640	179.160	7584.37	1512.49	-1462.70	512.43	40°04'03.935"N	104°45'00.757"W	1.22	
9382.00	89.290	179.550	7584.43	1606.96	-1557.69	513.50	40°04'02.997"N	104°45'00.743"W	1.48	
9477.00	89.720	179.290	7585.25	1701.41	-1652.68	514.47	40°04'02.058"N	104°45'00.731"W	0.53	
9572.00	88.890	179.440	7586.40	1795.88	-1747.67	515.52	40°04'01.119"N	104°45'00.717"W	0.89	
9667.00	89.690	179.630	7587.58	1890.31	-1842.65	516.29	40°04'00.180"N	104°45'00.707"W	0.87	
9762.00	90.580	179.370	7587.36	1984.75	-1937.65	517.12	40°03'59.242"N	104°45'00.697"W	0.98	
9857.00	90.270	180.680	7586.65	2079.09	-2032.64	517.08	40°03'58.303"N	104°45'00.697"W	1.42	
9951.00	89.660	180.830	7586.71	2172.29	-2126.64	515.84	40°03'57.374"N	104°45'00.713"W	0.67	
10046.00	90.000	180.440	7586.99	2266.52	-2221.63	514.79	40°03'56.435"N	104°45'00.727"W	0.54	
10141.00	89.590	180.330	7587.33	2360.79	-2316.63	514.15	40°03'55.497"N	104°45'00.735"W	0.45	
10236.00	90.120	179.990	7587.57	2455.11	-2411.62	513.88	40°03'54.558"N	104°45'00.739"W	0.66	
10331.00	89.440	180.860	7587.94	2549.37	-2506.62	513.18	40°03'53.619"N	104°45'00.748"W	1.16	
10426.00	91.470	180.410	7587.18	2643.59	-2601.61	512.12	40°03'52.680"N	104°45'00.761"W	2.19	



Actual Wellpath Report

CLARK 35C-11HZ AWP

Page 5 of 7



REFERENCE WELLPATH IDENTIFICATION

Operator	KERR-MCGEE OIL & GAS ONSHORE LP	Slot	SLOT#02 CLARK 35C-11HZ (510'FNL & 470'FWL, SEC.11)
Area	COLORADO	Well	CLARK 35C-11HZ
Field	WELD COUNTY (KERR MCGEE)	Wellbore	CLARK 35C-11HZ AWB
Facility	SEC.11-T1N-R66W		

WELLPATH DATA (154 stations)

MD [ft]	Inclination [°]	Azimuth [°]	TVD [ft]	Vert Sect [ft]	North [ft]	East [ft]	Latitude	Longitude	DLS [°/100ft]	Comments
10521.00	90.300	181.510	7585.72	2737.73	-2696.58	510.53	40°03'51.742"N	104°45'00.782"W	1.69	
10616.00	89.040	182.220	7586.26	2831.66	-2791.52	507.44	40°03'50.804"N	104°45'00.821"W	1.52	
10710.00	88.270	182.260	7588.47	2924.49	-2885.43	503.77	40°03'49.876"N	104°45'00.869"W	0.82	
10805.00	88.610	180.570	7591.06	3018.50	-2980.36	501.42	40°03'48.937"N	104°45'00.899"W	1.81	
10900.00	88.980	180.570	7593.05	3112.72	-3075.33	500.48	40°03'47.999"N	104°45'00.911"W	0.39	
10995.00	89.810	180.690	7594.06	3206.94	-3170.32	499.43	40°03'47.060"N	104°45'00.925"W	0.88	
11090.00	90.120	180.220	7594.12	3301.20	-3265.32	498.68	40°03'46.121"N	104°45'00.934"W	0.59	
11185.00	91.130	179.630	7593.08	3395.56	-3360.31	498.80	40°03'45.183"N	104°45'00.933"W	1.23	
11280.00	89.230	179.750	7592.78	3489.96	-3455.30	499.32	40°03'44.244"N	104°45'00.926"W	2.00	
11374.00	89.620	179.040	7593.72	3583.42	-3549.29	500.31	40°03'43.315"N	104°45'00.913"W	0.86	
11469.00	89.960	179.490	7594.07	3677.91	-3644.28	501.53	40°03'42.376"N	104°45'00.898"W	0.59	
11564.00	88.880	179.940	7595.03	3772.31	-3739.28	502.00	40°03'41.438"N	104°45'00.892"W	1.23	
11659.00	89.810	179.390	7596.12	3866.71	-3834.27	502.56	40°03'40.499"N	104°45'00.885"W	1.14	
11754.00	88.890	180.160	7597.20	3961.10	-3929.26	502.93	40°03'39.560"N	104°45'00.880"W	1.26	
11849.00	89.750	179.650	7598.32	4055.46	-4024.25	503.09	40°03'38.621"N	104°45'00.878"W	1.05	
11944.00	87.930	179.610	7600.25	4149.86	-4119.22	503.70	40°03'37.683"N	104°45'00.870"W	1.92	
12038.00	87.840	178.570	7603.72	4243.32	-4213.15	505.19	40°03'36.755"N	104°45'00.851"W	1.11	
12093.00	87.770	178.390	7605.82	4298.05	-4268.09	506.65	40°03'36.212"N	104°45'00.832"W	0.35	Last BHI MWD Survey
12152.00	87.770	178.390	7608.12	4356.77	-4327.02	508.31	40°03'35.629"N	104°45'00.811"W	0.00	Projection to Bit

HOLE & CASING SECTIONS - Ref Wellbore: CLARK 35C-11HZ AWB Ref Wellpath: CLARK 35C-11HZ AWP

String/Diameter	Start MD [ft]	End MD [ft]	Interval [ft]	Start TVD [ft]	End TVD [ft]	Start N/S [ft]	Start E/W [ft]	End N/S [ft]	End E/W [ft]
13.5in Open Hole	13.00	1228.00	1215.00	13.00	1227.98	0.00	0.00	1.57	0.83
9.625in Casing Surface	13.00	1228.00	1215.00	13.00	1227.98	0.00	0.00	1.57	0.83
8.75in Open Hole	1228.00	8035.00	6807.00	1227.98	7573.14	1.57	0.83	-211.75	530.63
7in Casing Intermediate	13.00	8025.00	8012.00	13.00	7572.79	0.00	0.00	-201.77	531.06
6.125in Open Hole	8025.00	12152.00	4127.00	7572.79	7608.12	-201.77	531.06	-4327.02	508.31



Actual Wellpath Report

CLARK 35C-11HZ AWP

Page 6 of 7



REFERENCE WELLPATH IDENTIFICATION

Operator	KERR-MCGEE OIL & GAS ONSHORE LP	Slot	SLOT#02 CLARK 35C-11HZ (510'FNL & 470'FWL, SEC.11)
Area	COLORADO	Well	CLARK 35C-11HZ
Field	WELD COUNTY (KERR MCGEE)	Wellbore	CLARK 35C-11HZ AWB
Facility	SEC.11-T1N-R66W		

TARGETS

Name	MD [ft]	TVD [ft]	North [ft]	East [ft]	Grid East [US ft]	Grid North [US ft]	Latitude	Longitude	Shape
CLARK 3 PAD SECTION LINES		-1.00	-30.26	0.00	3209320.61	1269845.23	40°04'18.091"N	104°45'07.348"W	polygon
CLARK 3 PAD HARDLINES (460' SETBACKS)		7499.00	-30.26	0.00	3209320.61	1269845.23	40°04'18.091"N	104°45'07.348"W	polygon
CLARK 35C-11HZ BHL ON PLAT (460'FSL & 990'FWL, SEC.11) REV-1		7602.00	-4352.87	499.11	3209856.14	1265527.15	40°03'35.374"N	104°45'00.929"W	point
CLARK 35C-11HZ BHL ON PLAT (460'FSL & 990'FWL, SEC.11) REV-2		7621.00	-4352.87	499.11	3209856.14	1265527.15	40°03'35.374"N	104°45'00.929"W	point

WELLPATH COMPOSITION - Ref Wellbore: CLARK 35C-11HZ AWB Ref Wellpath: CLARK 35C-11HZ AWP

Start MD [ft]	End MD [ft]	Positional Uncertainty Model	Log Name/Comment	Wellbore
13.00	1163.00	Generic gyro - continuous (Standard)	GYRODATA SURVEYS <113-1163>	CLARK 35C-11HZ AWB
1163.00	8023.00	NaviTrak (Standard)	BHI MWD SURVEYS 8 3/4" HOLE <1253-8023>	CLARK 35C-11HZ AWB
8023.00	12093.00	OnTrak (Standard)	BHI MWD SURVEYS 6 1/8" HOLE <8055-12093>	CLARK 35C-11HZ AWB
12093.00	12152.00	Blind Drilling (std)	Projection to bit	CLARK 35C-11HZ AWB



Actual Wellpath Report

CLARK 35C-11HZ AWP

Page 7 of 7



REFERENCE WELLPATH IDENTIFICATION

Operator	KERR-MCGEE OIL & GAS ONSHORE LP	Slot	SLOT#02 CLARK 35C-11HZ (510'FNL & 470'FWL, SEC.11)
Area	COLORADO	Well	CLARK 35C-11HZ
Field	WELD COUNTY (KERR MCGEE)	Wellbore	CLARK 35C-11HZ AWB
Facility	SEC.11-T1N-R66W		

WELLPATH COMMENTS

MD [ft]	Inclination [°]	Azimuth [°]	TVD [ft]	Comment
13.00	0.000	141.280	13.00	Tie-On
113.00	0.390	141.280	113.00	Begin GYRO Surveys
1163.00	0.550	333.420	1162.98	Tie-Into GYRO Surveys
1253.00	0.450	306.980	1252.98	Begin BHI MWD Surveys
8025.00	87.817	182.766	7572.79	7" Casing Point
12093.00	87.770	178.390	7605.82	Last BHI MWD Survey
12152.00	87.770	178.390	7608.12	Projection to Bit