

The Road to Excellence Starts with Safety

Sold To #: 300721	Ship To #: 2902211	Quote #:	Sales Order #: 9110447
Customer: WILLIAMS PRODUCTION RMT INC - EBUS		Customer Rep: Bascom, Kenny	
Well Name: RWF	Well #: 311-32	API/UWI #: 05-045-21055	
Field: Rulison	City (SAP): Rulison	County/Parish: Garfield	State: Colorado
Lat: N 39.486 deg. OR N 39 deg. 29 min. 8.527 secs.		Long: W 107.916 deg. OR W -108 deg. 5 min. 3.156 secs.	
Contractor: CYCLONE 17	Rig/Platform Name/Num: CYCLONE 17		
Job Purpose: Cement Surface Casing			
Well Type: Development Well		Job Type: Cement Surface Casing	
Sales Person: SCOTT, KYLE		Srvc Supervisor: PONDER, THOMAS	MBU ID Emp #: 427112

Job Personnel

HES Emp Name	Exp Hrs	Emp #	HES Emp Name	Exp Hrs	Emp #	HES Emp Name	Exp Hrs	Emp #
JENSEN, JESSE Robert	4.5	478774	KEANE, JOHN Donovon	4.5	486519	PONDER, THOMAS Lynn	4.5	427112
SINGLETON, AUSTIN W	4.5	487406						

Equipment

HES Unit #	Distance-1 way	HES Unit #	Distance-1 way	HES Unit #	Distance-1 way	HES Unit #	Distance-1 way
10565341	60 mile	10804567	60 mile	10951245	60 mile	11360871	60 mile
11542767	60 mile						

Job Hours

Date	On Location Hours	Operating Hours	Date	On Location Hours	Operating Hours	Date	On Location Hours	Operating Hours
01/13/2012	4.5	2						

TOTAL Total is the sum of each column separately

Job

Job Times

Formation Name	Top	Bottom	Called Out	Date	Time	Time Zone
Formation Depth (MD)			On Location	13 - Jan - 2012	07:15	MST
Form Type	BHST		Job Started	13 - Jan - 2012	12:00	MST
Job depth MD	1111.3 ft	Job Depth TVD	Job Completed	13 - Jan - 2012	14:13	MST
Water Depth		Wk Ht Above Floor	Departed Loc	13 - Jan - 2012	15:11	MST
Perforation Depth (MD)	From	To		13 - Jan - 2012	16:30	MST

Well Data

Description	New / Used	Max pressure psig	Size in	ID in	Weight lbm/ft	Thread	Grade	Top MD ft	Bottom MD ft	Top TVD ft	Bottom TVD ft
OPEN HOLE				13.5				.	1120.		
SURFACE CASING	Unknown		9.625	9.001	32.3		H-40	.	1111.3		

Sales/Rental/3rd Party (HES)

Description	Qty	Qty uom	Depth	Supplier
R/A DENSOMETER W/CHART RECORDER,/JOB,ZI	1	JOB		
ADC (AUTO DENSITY CTRL) SYS, /JOB,ZI	1	JOB		
PORT. DAS W/CEMWIN;ACQUIRE W/HES, ZI	1	JOB		
PLUG,CMTG, TOP, 9 5/8, HWE, 8.16 MIN/9.06 MA	1	EA		

Tools and Accessories

Type	Size	Qty	Make	Depth	Type	Size	Qty	Make	Depth	Type	Size	Qty	Make
Guide Shoe					Packer					Top Plug	9 5/8	1	HES
Float Shoe					Bridge Plug					Bottom Plug			
Float Collar					Retainer					SSR plug set			
Insert Float										Plug Container	9 5/8	1	HES
Stage Tool										Centralizers			

Miscellaneous Materials

Gelling Agt	Conc	Surfactant	Conc	Acid Type	Qty	Conc	%
Treatment Fld	Conc	Inhibitor	Conc	Sand Type	Size	Qty	

Fluid Data									
Stage/Plug #: 1									
Fluid #	Stage Type	Fluid Name	Qty	Qty uom	Mixing Density lbm/gal	Yield ft ³ /sk	Mix Fluid Gal/sk	Rate bbl/min	Total Mix Fluid Gal/sk
1	Fresh Water		20.00	bbl	8.33	.0	.0	6.0	
2	Lead Cement	VERSACEM (TM) SYSTEM (452010)	160.0	sacks	12.3	2.38	13.75	8.0	13.75
	13.75 Gal	FRESH WATER							
3	Tail Cement	VERSACEM (TM) SYSTEM (452010)	160.0	sacks	12.8	2.11	11.75	8.0	11.75
	11.75 Gal	FRESH WATER							
4	Displacement Fluid		84.00	bbl	8.34	.0	.0	10.0	
Calculated Values		Pressures		Volumes					
Displacement	84.4	Shut In: Instant		Lost Returns		Cement Slurry	127.9	Pad	
Top Of Cement	SURFACE	5 Min		Cement Returns	28	Actual Displacement	84.4	Treatment	
Frac Gradient		15 Min		Spacers	20	Load and Breakdown		Total Job	233
Rates									
Circulating	RIG	Mixing	8	Displacement	10	Avg. Job	8		
Cement Left In Pipe	Amount	38.6 ft	Reason	Shoe Joint					
Frac Ring # 1 @	ID	Frac ring # 2 @	ID	Frac Ring # 3 @	ID	Frac Ring # 4 @	ID		
The Information Stated Herein Is Correct				Customer Representative Signature					

The Road to Excellence Starts with Safety

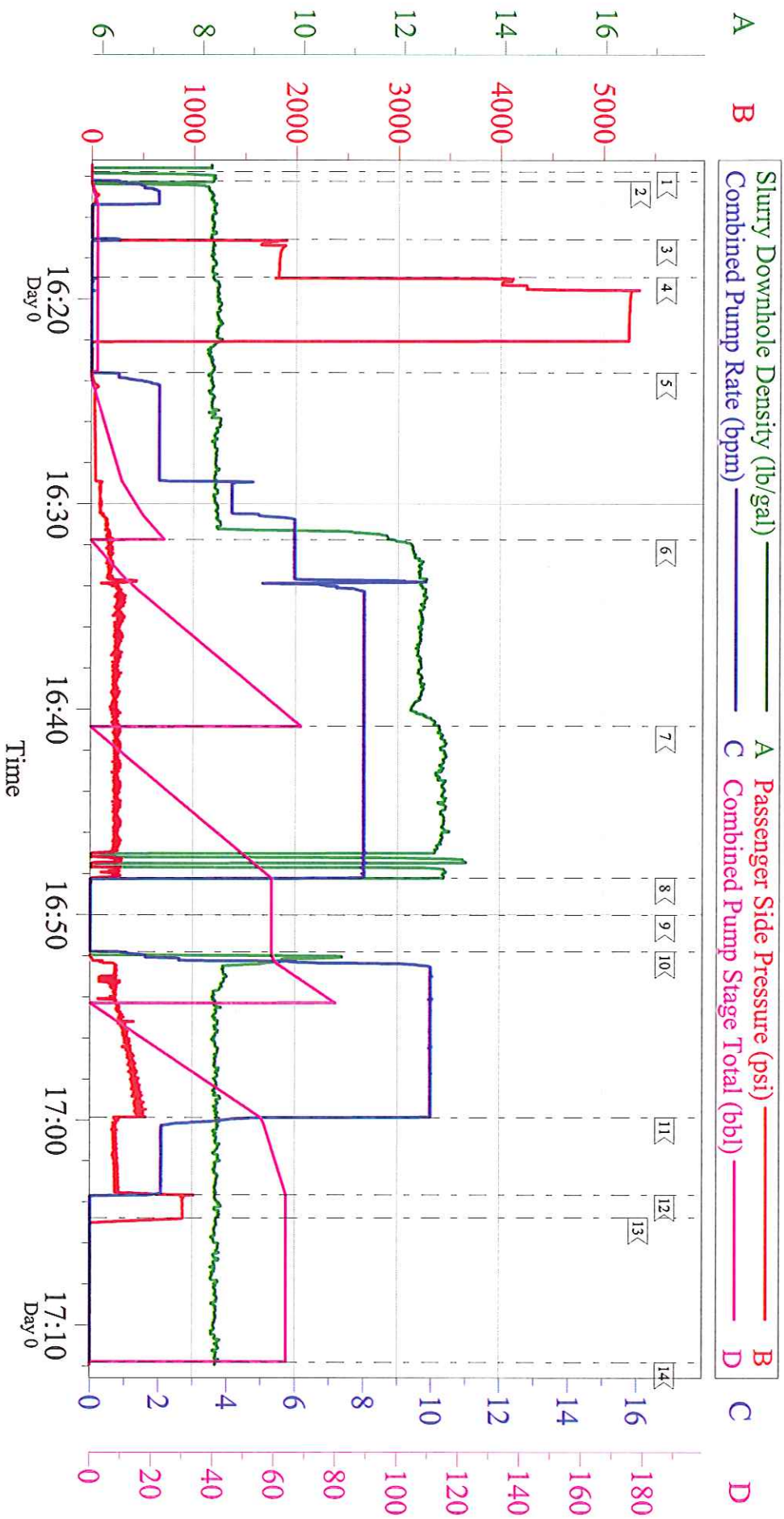
Sold To #: 300721	Ship To #: 2902211	Quote #:	Sales Order #: 9110447
Customer: WILLIAMS PRODUCTION RMT INC - EBUS		Customer Rep: Bascom, Kenny	
Well Name: RWF	Well #: 311-32	API/UWI #: 05-045-21055	
Field: Rulison	City (SAP): Rulison	County/Parish: Garfield	State: Colorado
Legal Description:			
Lat: N 39.486 deg. OR N 39 deg. 29 min. 8.527 secs.		Long: W 107.916 deg. OR W -108 deg. 5 min. 3.156 secs.	
Contractor: CYCLONE 17		Rig/Platform Name/Num: CYCLONE 17	
Job Purpose: Cement Surface Casing			Ticket Amount:
Well Type: Development Well		Job Type: Cement Surface Casing	
Sales Person: SCOTT, KYLE		Srvc Supervisor: PONDER, THOMAS	MBU ID Emp #: 427112

Activity Description	Date/Time	Cht #	Rate bbl/min	Volume bbl		Pressure psig		Comments
				Stage	Total	Tubing	Casing	
Call Out	01/13/2012 07:15							
Crew Leave Yard	01/13/2012 10:00							ALL HES PRESENT FOR PRE-CONVOY SAFETY HUDDLE
Arrive At Loc	01/13/2012 12:00							RIG WAS STILL RUNNING CASING WHEN CREW ARRIVED ON LOCATION
Assessment Of Location Safety Meeting	01/13/2012 13:00							TD- 1120', TP- 1111.31', SJ- 38.55', MUD- 10.1 PPG, HOLE- 13 1/2", SURFACE CASING- 9 5/8" 32.3# H-40
Rig-Up Equipment	01/13/2012 13:15							RIG STARTED CIRCULATION ON BOTTOM @
Safety Meeting	01/13/2012 13:45							ALL HES PRESENT, RIG CREW PRESENT
Start Job	01/13/2012 14:13							
Other	01/13/2012 14:14		2	2			47.0	FILL LINES
Test Lines	01/13/2012 14:17		0.1	0.1			5255.0	PSI TESTS GOOD
Pump Spacer 1	01/13/2012 14:23		6	20			148.0	FRESH WATER
Pump Lead Cement	01/13/2012 14:31		8	67.8			286.0	160 SKS 12.3 PPG 2.38 FT3/SK 13.75 GAL/SK
Activity Description	Date/Time	Cht #	Rate bbl/min	Volume bbl		Pressure psig		Comments
				Stage	Total	Tubing	Casing	

Pump Tail Cement	01/13/2012 14:40		8	60.1			259.0	160 SKS 12.8 PPG 2.11 FT3/SK 11.75 GAL/SK, AT THE END OF CEMENT NEW OPERATOR WAS TRYING TO GET ALL OF CEMENT OUT OF BULK TRUCK AND EMPTIED DOWNHOLE SIDE 2 TIMES CAUSING DENSITY TO GO TO ZERO AND BACK UP
Shutdown	01/13/2012 14:48							
Drop Plug	01/13/2012 14:50							PLUG DROP VERIFIED VIA TATTLE TELL BY CUSTOMER REP
Pump Displacement	01/13/2012 14:51		10	84.4			418.0	FRESH WATER
Slow Rate	01/13/2012 14:59		2	74.4			245.0	GOOD RETURNS THROUGHOUT THE JOB, 28 BBL CEMENT CIRCULATED TO SURFACE
Bump Plug	01/13/2012 15:03		2	84.4			312.0	PLUG BUMPED
Check Floats	01/13/2012 15:04						854.0	FLOATS HELD, 1/2 BBL BACK TO THE DISPLACEMENT TANKS
End Job	01/13/2012 15:11							THANK YOU FOR CHOOSING HALLIBURTON, THOMAS PONDER AND CREW

WILLIAMS GM 422-26

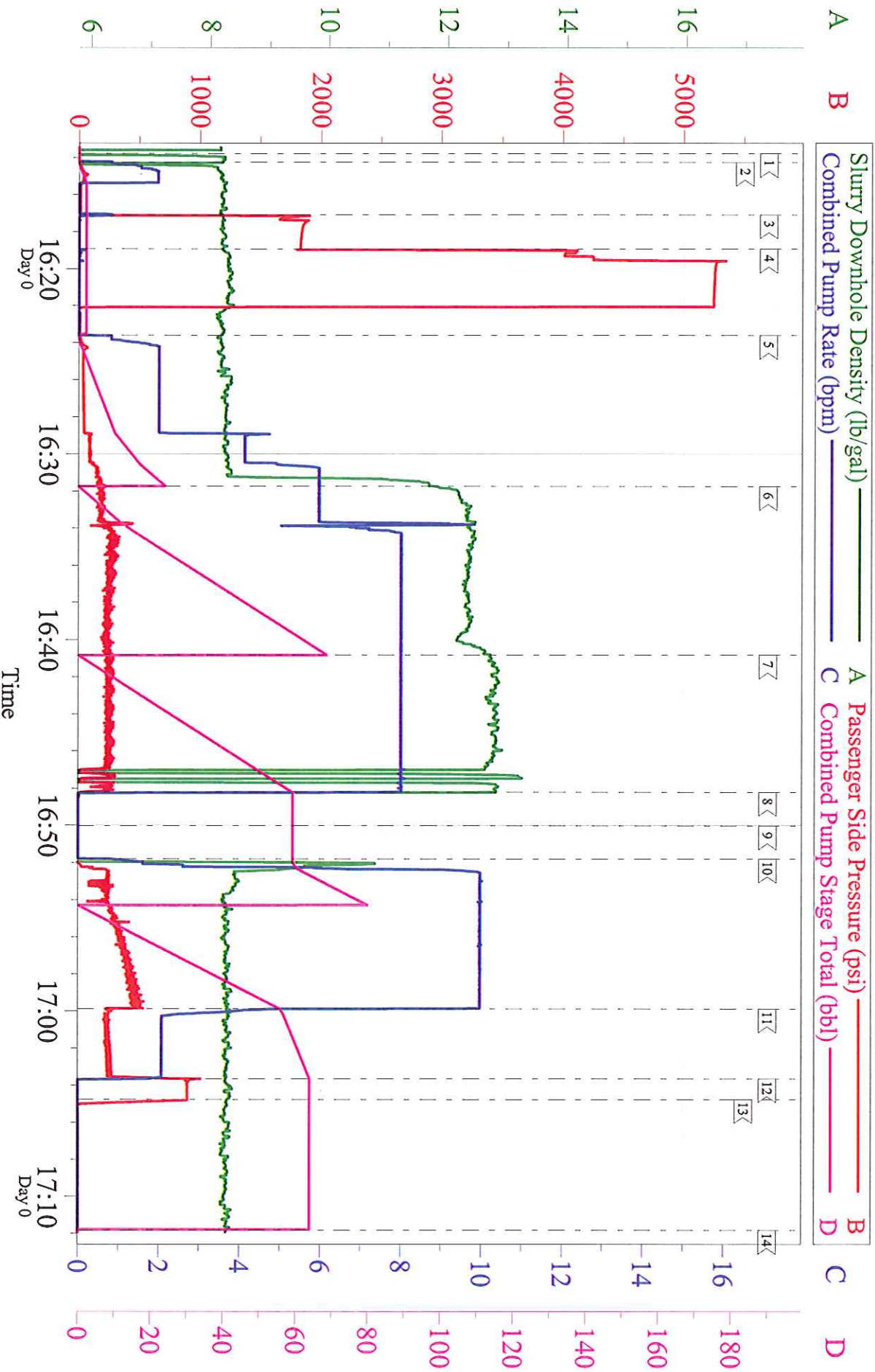
4.5 IN PRODUCTION



Customer:	WILLIAMS	Job Date:	13-Jan-2012	Sales Order #:	9110447
Well Description:	RWF 311-32	Job Type:	SURFACE	ADC Used:	YES
Company Rep:	BRENT BASCOM	Cement Supervisor:	THOMAS PONDER	Elite #/Operator:	ELITE #1 / JOHN KEANE

WILLIAMS GM 422-26

4.5 IN PRODUCTION



Customer: WILLIAMS
 Well Description: RWF 311-32
 Company Rep: BRENT BASCOM

Job Date: 13-Jan-2012
 Job Type: SURFACE
 Cement Supervisor: THOMAS PONDER

Sales Order #: 9110447
 ADC Used: YES
 Elite #/Operator: ELITE #1 / JOHN KEANE