

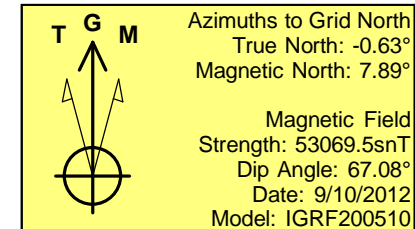
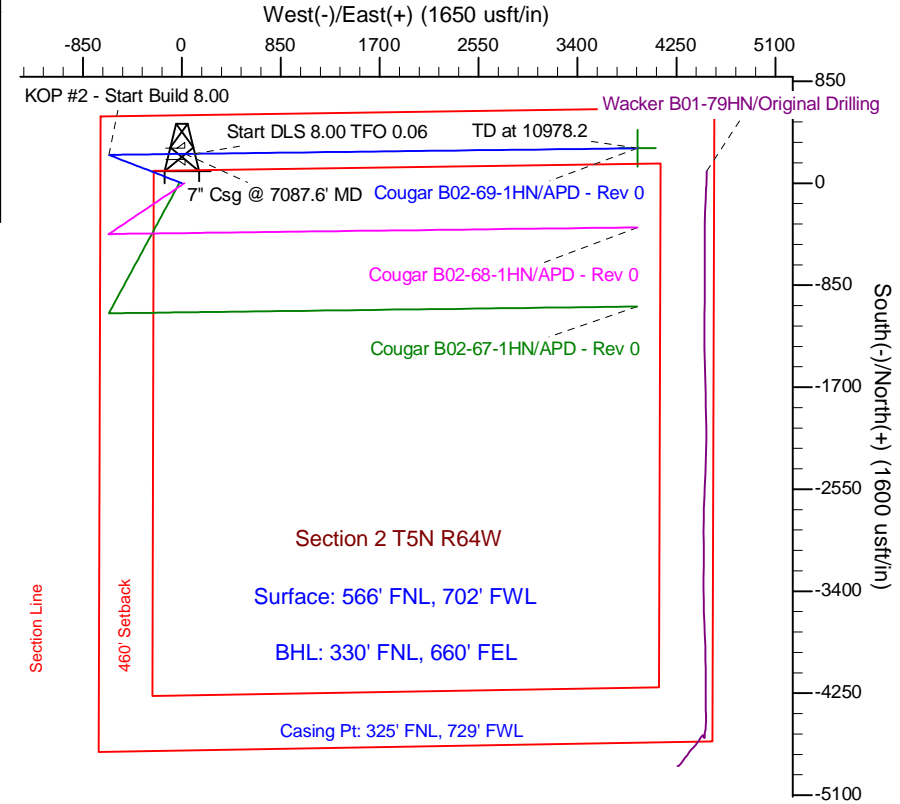
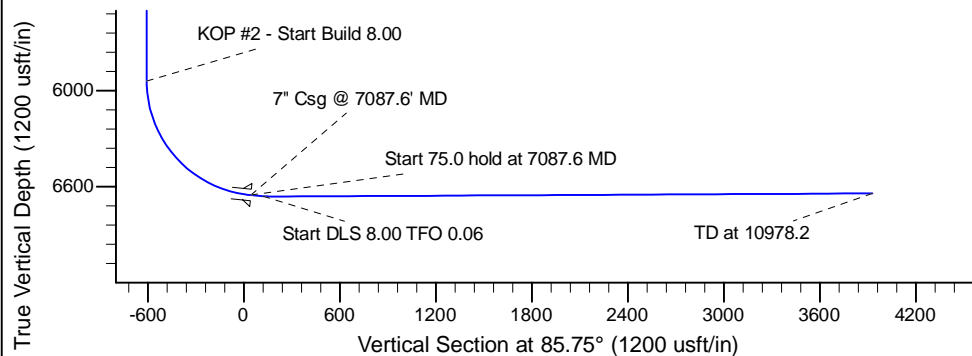
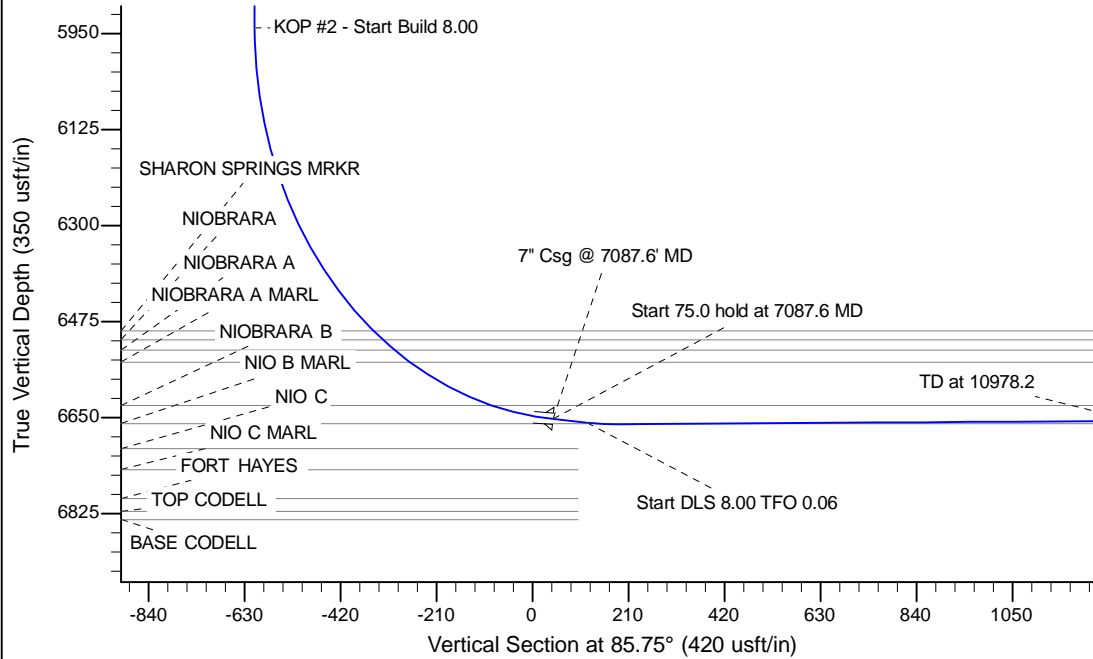
Project: Wattenberg Field  
Site: B (Sec.2-T05N-R64W) Weld County, CO  
Well: Cougar B02-69-1HN  
Wellbore: Original Drilling  
Design: APD - Rev 0

# Northern Region Drilling

Geodetic System: US State Plane 1983  
Datum: North American Datum 1983  
Ellipsoid: GRS 1980  
Zone: Colorado Northern Zone  
System Datum: Mean Sea Level

## SECTION DETAILS

Sec	MD	Inc	Azi	TVD	+N/-S	+E/-W	Dleg	TFace	VSec	Target
1	0.0	0.00	0.00	0.0	0.0	0.0	0.00	0.00	0.0	
2	1500.0	0.00	0.00	1500.0	0.0	0.0	0.00	0.00	0.0	
3	2140.2	16.00	290.63	2131.9	31.3	-83.1	2.50	290.63	-80.6	
4	3925.6	16.00	290.63	3848.1	204.7	-543.9	0.00	0.00	-527.2	
5	4565.8	0.00	0.00	4480.0	236.0	-627.0	2.50	180.00	-607.8	
6	6025.1	0.00	0.00	5939.3	236.0	-627.0	0.00	0.00	-607.8	
7	7087.6	85.00	89.30	6652.8	244.0	26.7	8.00	89.30	44.7	
8	7162.6	85.00	89.30	6659.3	244.9	101.4	0.00	0.00	119.3	
9	7228.9	90.30	89.31	6662.0	245.7	167.6	8.00	0.06	185.4	
10	10978.2	90.30	89.31	6642.4	291.2	3916.6	0.00	0.00	3927.4	Cougar B02-69-1HN BHL 330'FNL, 660'FEL



WELL DETAILS: Cougar B02-69-1HN			
Ground Level:	4641.0	Latitude	40.434070
Northing	1402466.33	Easting	3271606.07
		Longitude	-104.524280
Plan: APD - Rev 0 (Cougar B02-69-1HN/Original Drilling)			
Created By:	Carrie Willers	Date:	16:39, September 11 2012
Checked:		Date:	
Reviewed:		Date:	
Approved:		Date:	