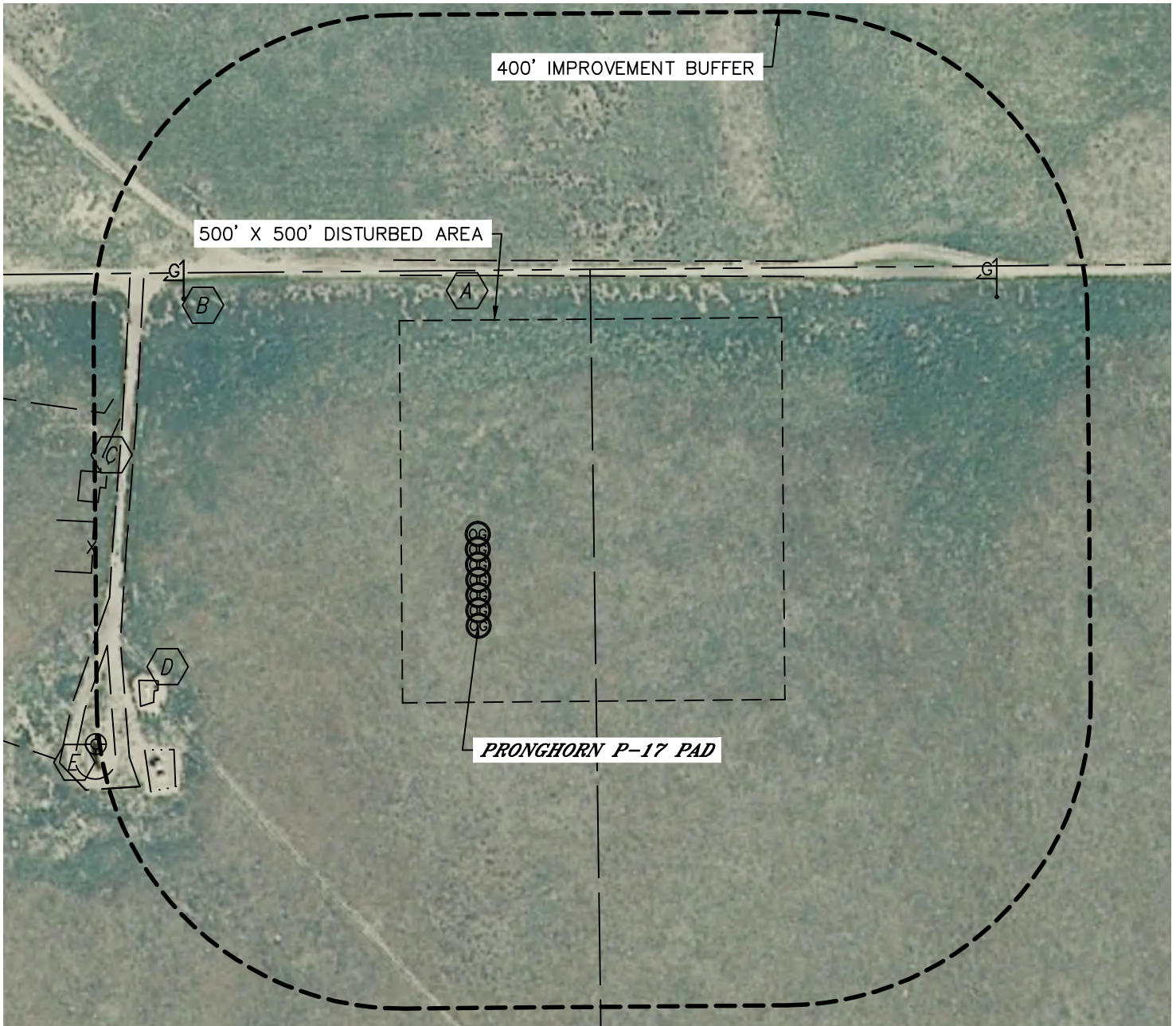




LOCATION DRAWING

PRONGHORN P-17 PAD

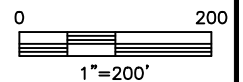
SECTION: 17
TOWNSHIP: 5N
RANGE: 61W



IMPROVEMENTS:

(MEASURED FROM PROPOSED PRONGHORN P-T-17HNB WELL)

- A** FIELD ROAD 468' N, 478' NW
- B** GAS MARKER 576' NW, 803' NE
- C** EDGE OF GRAVEL 539' NW
- D** EX. PRODUCTION EQUIPMENT (BONANZA CREEK)
425' & 430' SW, 520' NW
- E** EX. WELL 524' SW



NEAREST: BUILDING 5280'+, PUBLIC ROAD (CR 89) 1483' E,
ABOVE GROUND UTILITY 5280'+, RAILROAD 5280'+, PROPERTY LINE 465' N

DATE: 10-24-12
PROJECT#: 2012073