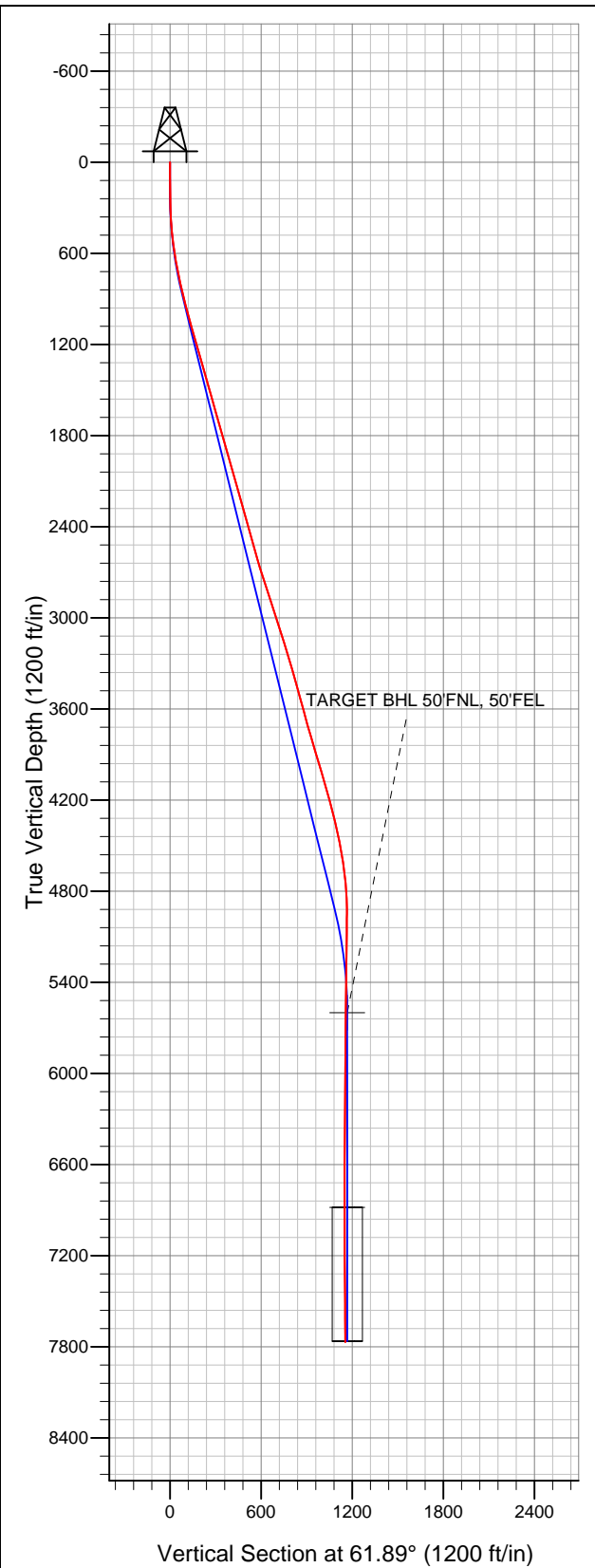


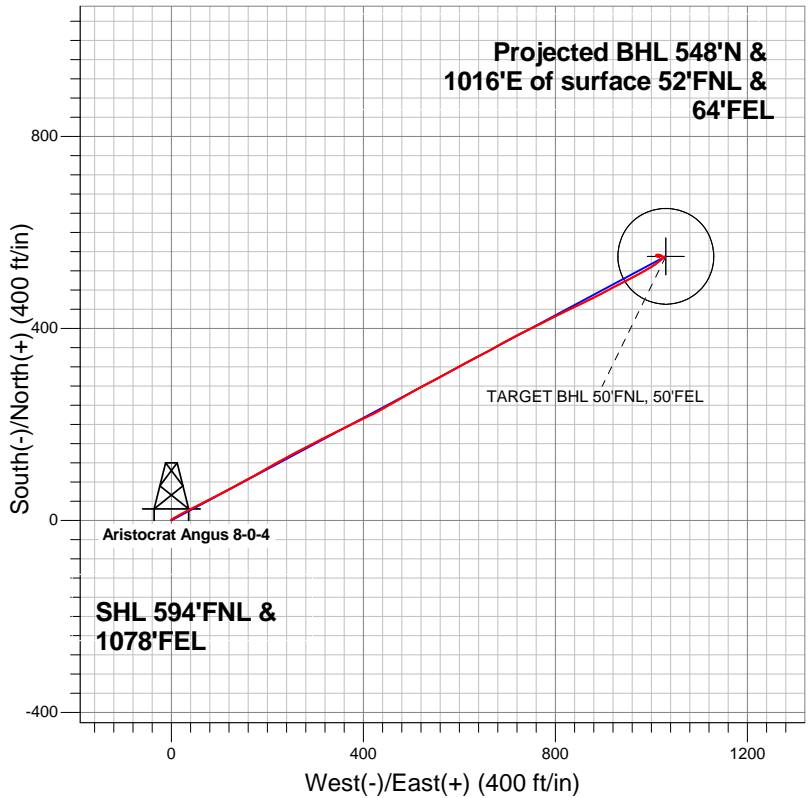
Well Name: Aristocrat Angus 8-0-4

Surface Location: Aristocrat Angus 1-4 Pad Sec.4-T3N-R65W
North American Datum 1983 US State Plane 1983Colorado Northern Zone
Ground Elevation: 4815.0

+N/-S	+E/-W	Northing	Easting	Latitude	Longitude	Slot
0.0	0.0	1338659.10	3233672.06	40.259990	-104.662710	
		Original Well Elev.	WELL @ 4827.0ft (Original Well Elev.)			



EnCana Oil & Gas Weld County CO



LEGEND

- Wellbore #1
- Aristocrat Angus 8-0-4, Wellbore #1, Plan #2 (8-13-12) R V0
- Survey #1

Final Survey Plot

Projected Final Survey -
7925'MD & 7769'TVD @ 1154'VS
0.50 deg Inc 121.70 deg AZ

Project: SEC.4-T3N-R65W
Site: Aristocrat Angus 1-4 Pad Sec.4-T3N-R65W
Well: Aristocrat Angus 8-0-4
Plan: Wellbore #1



EnCana Oil & Gas Weld County CO

SEC.4-T3N-R65W

Aristocrat Angus 1-4 Pad Sec.4-T3N-R65W

Aristocrat Angus 8-0-4

Wellbore #1

Survey: Survey #1

Standard Survey Report

21 August, 2012

Company:	EnCana Oil & Gas Weld County CO	Local Co-ordinate Reference:	Well Aristocrat Angus 8-0-4
Project:	SEC.4-T3N-R65W	TVD Reference:	WELL @ 4827.0ft (Original Well Elev.)
Site:	Aristocrat Angus 1-4 Pad Sec.4-T3N-R65W	MD Reference:	WELL @ 4827.0ft (Original Well Elev.)
Well:	Aristocrat Angus 8-0-4	North Reference:	True
Wellbore:	Wellbore #1	Survey Calculation Method:	Minimum Curvature
Design:	Wellbore #1	Database:	Landmark

Project	SEC.4-T3N-R65W, Weld County, Colorado		
Map System:	US State Plane 1983	System Datum:	Mean Sea Level
Geo Datum:	North American Datum 1983		Using Well Reference Point
Map Zone:	Colorado Northern Zone		Using geodetic scale factor

Site	Aristocrat Angus 1-4 Pad Sec.4-T3N-R65W				
Site Position:		Northing:	1,338,640.90ft	Latitude:	40.259940
From:	Lat/Long	Easting:	3,233,672.23ft	Longitude:	-104.662710
Position Uncertainty:	0.0 ft	Slot Radius:	"	Grid Convergence:	0.54 °

Well	Aristocrat Angus 8-0-4					
Well Position	+N/-S	0.0 ft	Northing:	1,338,659.10 ft	Latitude:	40.259990
	+E/-W	0.0 ft	Easting:	3,233,672.06 ft	Longitude:	-104.662710
Position Uncertainty		0.0 ft	Wellhead Elevation:	ft	Ground Level:	4,815.0 ft

Wellbore	Wellbore #1				
Magnetics	Model Name	Sample Date	Declination (°)	Dip Angle (°)	Field Strength (nT)
	IGRF2010	8/13/2012	8.64	66.91	52,946

Design	Wellbore #1				
Audit Notes:					
Version:	1.0	Phase:	ACTUAL	Tie On Depth:	0.0
Vertical Section:	Depth From (TVD) (ft)	+N/-S (ft)	+E/-W (ft)	Direction (°)	
	0.0	0.0	0.0	61.89	

Survey Program		Date	8/21/2012		
From (ft)	To (ft)	Survey (Wellbore)	Tool Name	Description	
90.0	7,925.0	Survey #1 (Wellbore #1)	MWD	MWD - Standard	

Survey	Wellbore Data									
	Measured Depth (ft)	Inclination (°)	Azimuth (°)	Vertical Depth (ft)	+N/-S (ft)	+E/-W (ft)	Vertical Section (ft)	Dogleg Rate (°/100ft)	Build Rate (°/100ft)	Turn Rate (°/100ft)
Main Survey	0.0	0.00	0.00	0.0	0.0	0.0	0.0	0.00	0.00	0.00
	90.0	0.60	2.30	90.0	0.5	0.0	0.2	0.67	0.67	0.00
	182.0	0.90	24.60	182.0	1.6	0.3	1.1	0.45	0.33	24.24
	273.0	1.50	59.60	273.0	2.9	1.7	2.8	1.01	0.66	38.46
	365.0	3.10	58.90	364.9	4.8	4.8	6.5	1.74	1.74	-0.76
	456.0	5.10	61.00	455.7	8.0	10.5	13.0	2.20	2.20	2.31
	548.0	7.30	62.40	547.1	12.7	19.2	22.9	2.40	2.39	1.52
	639.0	9.90	63.70	637.1	18.8	31.4	36.5	2.86	2.86	1.43
	735.0	11.30	61.70	731.4	26.9	47.1	54.2	1.51	1.46	-2.08
	829.0	12.40	62.10	823.4	36.0	64.1	73.5	1.17	1.17	0.43
	922.0	14.90	63.80	913.8	46.0	83.6	95.4	2.72	2.69	1.83
	1,016.0	15.50	62.60	1,004.5	57.1	105.6	120.1	0.72	0.64	-1.28
	1,110.0	15.30	61.60	1,095.1	68.8	127.7	145.0	0.35	-0.21	-1.06

Company:	EnCana Oil & Gas Weld County CO	Local Co-ordinate Reference:	Well Aristocrat Angus 8-0-4
Project:	SEC.4-T3N-R65W	TVD Reference:	WELL @ 4827.0ft (Original Well Elev.)
Site:	Aristocrat Angus 1-4 Pad Sec.4-T3N-R65W	MD Reference:	WELL @ 4827.0ft (Original Well Elev.)
Well:	Aristocrat Angus 8-0-4	North Reference:	True
Wellbore:	Wellbore #1	Survey Calculation Method:	Minimum Curvature
Design:	Wellbore #1	Database:	Landmark

Survey										
Measured Depth (ft)	Inclination (°)	Azimuth (°)	Vertical Depth (ft)	+N/-S (ft)	+E/-W (ft)	Vertical Section (ft)	Dogleg Rate (°/100ft)	Build Rate (°/100ft)	Turn Rate (°/100ft)	
1,203.0	16.30	61.90	1,184.6	80.8	150.0	170.4	1.08	1.08	0.32	
1,297.0	15.90	60.50	1,274.9	93.3	172.8	196.4	0.59	-0.43	-1.49	
1,391.0	15.50	59.60	1,365.4	106.0	194.9	221.8	0.50	-0.43	-0.96	
1,484.0	16.50	62.60	1,454.8	118.4	217.3	247.5	1.39	1.08	3.23	
1,578.0	15.40	60.30	1,545.2	130.7	240.0	273.3	1.35	-1.17	-2.45	
1,672.0	15.70	63.10	1,635.8	142.6	262.2	298.5	0.86	0.32	2.98	
1,765.0	16.40	63.00	1,725.1	154.3	285.1	324.2	0.75	0.75	-0.11	
1,859.0	15.50	61.90	1,815.5	166.2	308.0	350.0	1.01	-0.96	-1.17	
1,953.0	16.00	63.50	1,906.0	177.9	330.7	375.5	0.70	0.53	1.70	
2,046.0	16.30	63.10	1,995.3	189.6	353.8	401.4	0.34	0.32	-0.43	
2,140.0	15.70	64.40	2,085.7	201.0	377.0	427.3	0.74	-0.64	1.38	
2,234.0	15.80	64.50	2,176.2	212.0	400.1	452.8	0.11	0.11	0.11	
2,327.0	15.90	63.10	2,265.6	223.2	422.9	478.2	0.42	0.11	-1.51	
2,421.0	15.40	59.30	2,356.1	235.4	445.1	503.5	1.21	-0.53	-4.04	
2,515.0	15.70	61.40	2,446.7	247.9	467.0	528.7	0.68	0.32	2.23	
2,608.0	16.10	60.00	2,536.1	260.4	489.2	554.2	0.60	0.43	-1.51	
2,702.0	16.00	60.70	2,626.5	273.2	511.8	580.1	0.23	-0.11	0.74	
2,796.0	17.40	63.00	2,716.5	285.9	535.6	607.1	1.65	1.49	2.45	
2,889.0	18.40	61.90	2,805.0	299.2	560.9	635.7	1.14	1.08	-1.18	
2,983.0	18.40	60.70	2,894.2	313.4	587.0	665.4	0.40	0.00	-1.28	
3,077.0	17.40	61.20	2,983.7	327.5	612.2	694.3	1.08	-1.06	0.53	
3,170.0	18.10	62.80	3,072.2	340.8	637.2	722.6	0.92	0.75	1.72	
3,264.0	17.50	62.30	3,161.7	354.0	662.7	751.4	0.66	-0.64	-0.53	
3,358.0	16.20	59.60	3,251.7	367.2	686.6	778.6	1.61	-1.38	-2.87	
3,451.0	16.00	61.70	3,341.0	379.8	709.0	804.4	0.66	-0.22	2.26	
3,545.0	16.20	64.40	3,431.4	391.7	732.3	830.4	0.82	0.21	2.87	
3,639.0	15.70	63.80	3,521.7	402.9	755.5	856.2	0.56	-0.53	-0.64	
3,732.0	15.00	63.00	3,611.4	414.0	777.5	880.9	0.79	-0.75	-0.86	
3,826.0	15.50	63.80	3,702.1	425.0	799.6	905.6	0.58	0.53	0.85	
3,920.0	16.20	64.40	3,792.5	436.2	822.7	931.2	0.76	0.74	0.64	
4,013.0	16.80	63.80	3,881.7	447.8	846.5	957.6	0.67	0.65	-0.65	
4,107.0	17.10	63.70	3,971.6	459.9	871.1	985.0	0.32	0.32	-0.11	
4,201.0	16.30	62.40	4,061.7	472.1	895.1	1,012.0	0.94	-0.85	-1.38	
4,294.0	14.70	62.40	4,151.3	483.6	917.2	1,036.9	1.72	-1.72	0.00	
4,388.0	15.70	62.80	4,242.0	495.0	939.1	1,061.5	1.07	1.06	0.43	
4,482.0	13.50	62.30	4,332.9	505.9	960.1	1,085.2	2.34	-2.34	-0.53	
4,575.0	12.00	61.40	4,423.6	515.6	978.2	1,105.7	1.63	-1.61	-0.97	
4,669.0	10.80	59.30	4,515.8	524.7	994.3	1,124.3	1.35	-1.28	-2.23	
4,762.0	8.50	54.70	4,607.5	533.2	1,007.4	1,139.8	2.61	-2.47	-4.95	
4,856.0	6.20	50.10	4,700.7	540.4	1,017.0	1,151.7	2.52	-2.45	-4.89	
4,950.0	3.50	53.50	4,794.3	545.4	1,023.2	1,159.5	2.89	-2.87	3.62	
5,043.0	2.00	35.50	4,887.2	548.4	1,026.4	1,163.8	1.84	-1.61	-19.35	
5,137.0	0.60	223.60	4,981.2	549.4	1,027.0	1,164.8	2.76	-1.49	-182.87	
5,231.0	0.50	239.80	5,075.2	548.8	1,026.4	1,163.9	0.20	-0.11	17.23	
5,324.0	0.60	272.70	5,168.2	548.7	1,025.5	1,163.1	0.35	0.11	35.38	
5,418.0	0.80	279.70	5,262.2	548.8	1,024.4	1,162.1	0.23	0.21	7.45	
5,512.0	0.90	301.50	5,356.2	549.3	1,023.1	1,161.2	0.36	0.11	23.19	
5,605.0	1.10	305.50	5,449.2	550.2	1,021.8	1,160.5	0.23	0.22	4.30	
5,699.0	1.30	308.90	5,543.2	551.4	1,020.2	1,159.6	0.23	0.21	3.62	
5,755.6	1.36	306.30	5,599.8	552.2	1,019.1	1,159.1	0.15	0.10	-4.60	
TARGET BHL 50'FNL, 50'FEL										
5,793.0	1.40	304.70	5,637.1	552.7	1,018.4	1,158.7	0.15	0.11	-4.27	
5,886.0	1.30	269.00	5,730.1	553.3	1,016.4	1,157.2	0.90	-0.11	-38.39	
5,980.0	1.70	270.40	5,824.1	553.3	1,014.0	1,155.1	0.43	0.43	1.49	

Company:	EnCana Oil & Gas Weld County CO	Local Co-ordinate Reference:	Well Aristocrat Angus 8-0-4
Project:	SEC.4-T3N-R65W	TVD Reference:	WELL @ 4827.0ft (Original Well Elev.)
Site:	Aristocrat Angus 1-4 Pad Sec.4-T3N-R65W	MD Reference:	WELL @ 4827.0ft (Original Well Elev.)
Well:	Aristocrat Angus 8-0-4	North Reference:	True
Wellbore:	Wellbore #1	Survey Calculation Method:	Minimum Curvature
Design:	Wellbore #1	Database:	Landmark

Survey										
Measured Depth (ft)	Inclination (°)	Azimuth (°)	Vertical Depth (ft)	+N/-S (ft)	+E/-W (ft)	Vertical Section (ft)	Dogleg Rate (°/100ft)	Build Rate (°/100ft)	Turn Rate (°/100ft)	
6,074.0	0.40	306.10	5,918.1	553.5	1,012.3	1,153.7	1.48	-1.38	37.98	
6,167.0	0.30	254.90	6,011.1	553.6	1,011.8	1,153.3	0.34	-0.11	-55.05	
6,261.0	0.30	239.30	6,105.1	553.5	1,011.4	1,152.8	0.09	0.00	-16.60	
6,355.0	0.20	180.20	6,199.1	553.2	1,011.1	1,152.5	0.28	-0.11	-62.87	
6,449.0	0.30	244.40	6,293.1	552.9	1,010.9	1,152.2	0.30	0.11	68.30	
6,543.0	0.20	226.60	6,387.1	552.7	1,010.6	1,151.8	0.13	-0.11	-18.94	
6,637.0	0.30	272.30	6,481.1	552.6	1,010.2	1,151.4	0.23	0.11	48.62	
6,731.0	0.10	226.40	6,575.1	552.5	1,009.9	1,151.1	0.26	-0.21	-48.83	
6,826.0	0.30	196.90	6,670.1	552.2	1,009.8	1,150.9	0.23	0.21	-31.05	
6,920.0	0.40	173.20	6,764.1	551.7	1,009.7	1,150.6	0.18	0.11	-25.21	
7,014.0	0.30	164.60	6,858.0	551.1	1,009.8	1,150.4	0.12	-0.11	-9.15	
7,038.0	0.31	154.94	6,882.1	551.0	1,009.9	1,150.4	0.22	0.06	-40.23	
TARGET CIRCLE 50'FNL & 50'FEL										
7,109.0	0.40	133.10	6,953.0	550.6	1,010.2	1,150.4	0.22	0.12	-30.77	
7,203.0	0.40	132.80	7,047.0	550.2	1,010.6	1,150.7	0.00	0.00	-0.32	
7,297.0	0.40	109.90	7,141.0	549.9	1,011.2	1,151.0	0.17	0.00	-24.36	
7,391.0	0.40	110.40	7,235.0	549.6	1,011.8	1,151.4	0.00	0.00	0.53	
7,486.0	0.40	102.20	7,330.0	549.5	1,012.4	1,151.9	0.06	0.00	-8.63	
7,580.0	0.40	92.30	7,424.0	549.4	1,013.1	1,152.4	0.07	0.00	-10.53	
7,674.0	0.80	107.40	7,518.0	549.2	1,014.0	1,153.2	0.45	0.43	16.06	
7,769.0	0.60	132.40	7,613.0	548.6	1,015.0	1,153.8	0.38	-0.21	26.32	
7,880.0	0.50	121.70	7,724.0	548.0	1,015.9	1,154.2	0.13	-0.09	-9.64	
7,925.0	0.50	121.70	7,769.0	547.8	1,016.2	1,154.4	0.00	0.00	0.00	

Checked By: _____ Approved By: _____ Date: _____