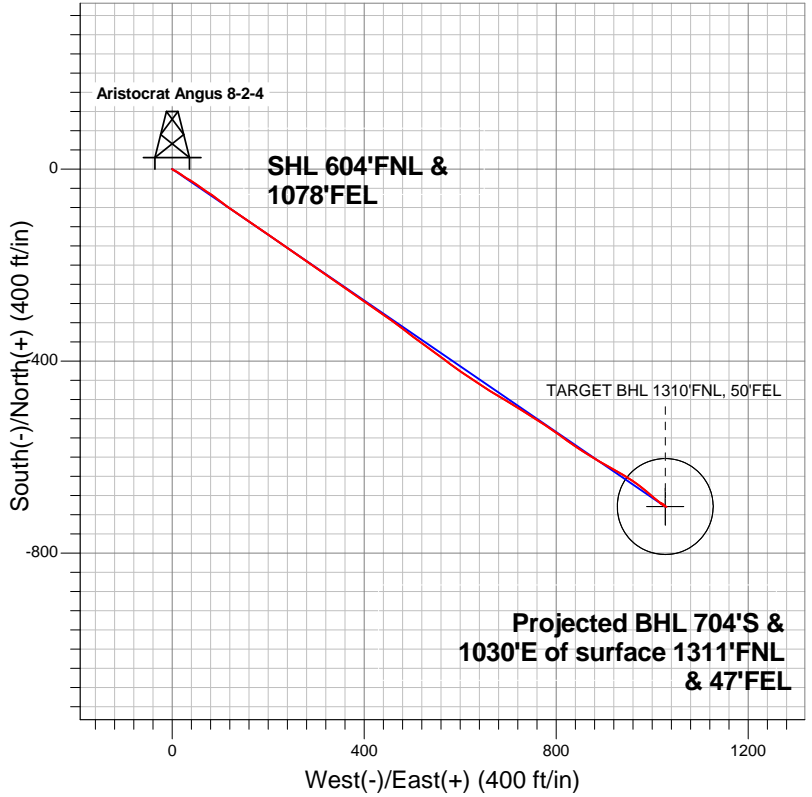
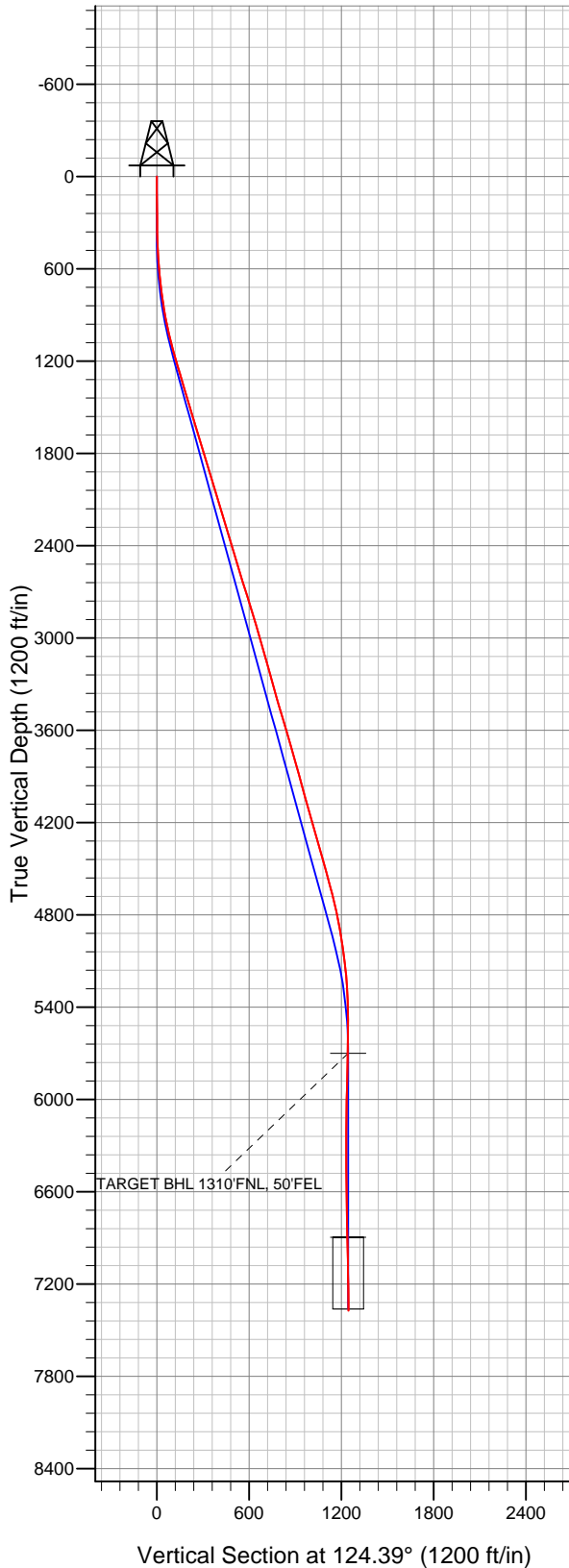


Well Name: Aristocrat Angus 8-2-4

Surface Location: Aristocrat Angus 1-4 Pad Sec.4-T3N-R65W
North American Datum 1983 US State Plane 1983Colorado Northern Zone
Ground Elevation: 4815.0

| | | | | | | |
|--------------------|-------|--------------------------------------|------------|-----------|-------------|------|
| +N/-S | +E/-W | Northing | Easting | Latitude | Longitude | Slot |
| 0.0 | 0.0 | 1338651.82 | 3233672.13 | 40.259970 | -104.662710 | |
| Original Well Elev | | WELL @ 4827.0ft (Original Well Elev) | | | | |

EnCana Oil & Gas Weld County CO



LEGEND

- Wellbore #1
- Aristocrat Angus 8-2-4, Wellbore #1, Plan #3 (8-06-12) R V0
- Survey #1

Final Survey Plot

Projected Final Survey -
7540'MD & 7374'TVD @ 1247'VS
0.70 deg Inc 110.10 deg AZ

Project: SEC.4-T3N-R65W
Site: Aristocrat Angus 1-4 Pad Sec.4-T3N-R65W
Well: Aristocrat Angus 8-2-4
Plan: Wellbore #1



EnCana Oil & Gas Weld County CO

SEC.4-T3N-R65W

Aristocrat Angus 1-4 Pad Sec.4-T3N-R65W

Aristocrat Angus 8-2-4

Wellbore #1

Survey: Survey #1

Standard Survey Report

13 August, 2012

| | | | |
|------------------|---|-------------------------------------|--------------------------------------|
| Company: | EnCana Oil & Gas Weld County CO | Local Co-ordinate Reference: | Well Aristocrat Angus 8-2-4 |
| Project: | SEC.4-T3N-R65W | TVD Reference: | WELL @ 4827.0ft (Original Well Elev) |
| Site: | Aristocrat Angus 1-4 Pad Sec.4-T3N-R65W | MD Reference: | WELL @ 4827.0ft (Original Well Elev) |
| Well: | Aristocrat Angus 8-2-4 | North Reference: | True |
| Wellbore: | Wellbore #1 | Survey Calculation Method: | Minimum Curvature |
| Design: | Wellbore #1 | Database: | Landmark |

| | | | |
|--------------------|---------------------------------------|----------------------|-----------------------------|
| Project | SEC.4-T3N-R65W, Weld County, Colorado | | |
| Map System: | US State Plane 1983 | System Datum: | Mean Sea Level |
| Geo Datum: | North American Datum 1983 | | Using Well Reference Point |
| Map Zone: | Colorado Northern Zone | | Using geodetic scale factor |

| | | | | | |
|------------------------------|---|---------------------|----------------|--------------------------|-------------|
| Site | Aristocrat Angus 1-4 Pad Sec.4-T3N-R65W | | | | |
| Site Position: | | Northing: | 1,338,640.90ft | Latitude: | 40.259940 |
| From: | Lat/Long | Easting: | 3,233,672.23ft | Longitude: | -104.662710 |
| Position Uncertainty: | 0.0 ft | Slot Radius: | " | Grid Convergence: | 0.54 ° |

| Well | Aristocrat Angus 8-2-4 | | | | | |
|----------------------|------------------------|--------|---------------------|-----------------|---------------|-------------|
| Well Position | +N/-S | 0.0 ft | Northing: | 1,338,651.82 ft | Latitude: | 40.259970 |
| | +E/-W | 0.0 ft | Easting: | 3,233,672.13 ft | Longitude: | -104.662710 |
| Position Uncertainty | | 0.0 ft | Wellhead Elevation: | ft | Ground Level: | 4,815.0 ft |

| | | | | | |
|-----------|-------------|-------------|-----------------|---------------|---------------------|
| Wellbore | Wellbore #1 | | | | |
| Magnetics | Model Name | Sample Date | Declination (°) | Dip Angle (°) | Field Strength (nT) |
| | IGRF2010 | 8/6/2012 | 8.64 | 66.92 | 52,948 |

| | | | | | |
|-------------------|--------------------------|---------------|---------------|------------------|-----|
| Design | Wellbore #1 | | | | |
| Audit Notes: | | | | | |
| Version: | 1.0 | Phase: | ACTUAL | Tie On Depth: | 0.0 |
| Vertical Section: | Depth From (TVD) (ft) | +N/-S (ft) | +E/-W (ft) | Direction (°) | |
| | 0.0 | 0.0 | 0.0 | 124.39 | |

| Survey Program | | Date | 8/13/2012 | | |
|----------------|---------|-------------------------|-----------|----------------|--|
| From (ft) | To (ft) | Survey (Wellbore) | Tool Name | Description | |
| 91.0 | 7,540.0 | Survey #1 (Wellbore #1) | MWD | MWD - Standard | |

| Survey | Wellbore Data | | | | | | | | | |
|---------------|---------------------|-----------------|-------------|---------------------|------------|------------|-----------------------|-----------------------|----------------------|---------------------|
| | Measured Depth (ft) | Inclination (°) | Azimuth (°) | Vertical Depth (ft) | +N/-S (ft) | +E/-W (ft) | Vertical Section (ft) | Dogleg Rate (°/100ft) | Build Rate (°/100ft) | Turn Rate (°/100ft) |
| Main Wellbore | 0.0 | 0.00 | 0.00 | 0.0 | 0.0 | 0.0 | 0.0 | 0.00 | 0.00 | 0.00 |
| | 91.0 | 0.60 | 119.40 | 91.0 | -0.2 | 0.4 | 0.5 | 0.66 | 0.66 | 0.00 |
| | 182.0 | 0.70 | 144.20 | 182.0 | -0.9 | 1.2 | 1.5 | 0.32 | 0.11 | 27.25 |
| | 274.0 | 0.40 | 140.30 | 274.0 | -1.6 | 1.7 | 2.3 | 0.33 | -0.33 | -4.24 |
| | 365.0 | 0.70 | 119.70 | 365.0 | -2.1 | 2.4 | 3.2 | 0.39 | 0.33 | -22.64 |
| | 456.0 | 2.50 | 110.10 | 455.9 | -3.1 | 4.7 | 5.6 | 1.99 | 1.98 | -10.55 |
| | 548.0 | 4.10 | 120.30 | 547.8 | -5.4 | 9.4 | 10.9 | 1.85 | 1.74 | 11.09 |
| | 640.0 | 5.90 | 124.30 | 639.4 | -9.8 | 16.2 | 18.9 | 1.99 | 1.96 | 4.35 |
| | 738.0 | 6.30 | 124.30 | 736.9 | -15.6 | 24.8 | 29.3 | 0.41 | 0.41 | 0.00 |
| | 831.0 | 9.10 | 120.60 | 829.0 | -22.3 | 35.3 | 41.7 | 3.06 | 3.01 | -3.98 |
| | 925.0 | 11.00 | 124.70 | 921.6 | -31.2 | 49.1 | 58.1 | 2.16 | 2.02 | 4.36 |
| | 1,019.0 | 12.40 | 124.10 | 1,013.6 | -41.9 | 64.8 | 77.2 | 1.49 | 1.49 | -0.64 |
| | 1,112.0 | 15.40 | 125.00 | 1,103.9 | -54.6 | 83.2 | 99.5 | 3.23 | 3.23 | 0.97 |

| | | | |
|------------------|---|-------------------------------------|--------------------------------------|
| Company: | EnCana Oil & Gas Weld County CO | Local Co-ordinate Reference: | Well Aristocrat Angus 8-2-4 |
| Project: | SEC.4-T3N-R65W | TVD Reference: | WELL @ 4827.0ft (Original Well Elev) |
| Site: | Aristocrat Angus 1-4 Pad Sec.4-T3N-R65W | MD Reference: | WELL @ 4827.0ft (Original Well Elev) |
| Well: | Aristocrat Angus 8-2-4 | North Reference: | True |
| Wellbore: | Wellbore #1 | Survey Calculation Method: | Minimum Curvature |
| Design: | Wellbore #1 | Database: | Landmark |

| Survey | | | | | | | | | | |
|-----------------------------|--------------------|----------------|---------------------------|---------------|---------------|-----------------------------|-----------------------------|----------------------------|---------------------------|--|
| Measured Depth (ft) | Inclination (°) | Azimuth (°) | Vertical Depth (ft) | +N/-S (ft) | +E/-W (ft) | Vertical Section (ft) | Dogleg Rate (°/100ft) | Build Rate (°/100ft) | Turn Rate (°/100ft) | |
| 1,206.0 | 16.00 | 128.50 | 1,194.4 | -69.8 | 103.6 | 124.9 | 1.19 | 0.64 | 3.72 | |
| 1,300.0 | 16.20 | 123.40 | 1,284.7 | -85.1 | 124.7 | 151.0 | 1.52 | 0.21 | -5.43 | |
| 1,393.0 | 16.90 | 124.30 | 1,373.9 | -99.9 | 146.7 | 177.5 | 0.80 | 0.75 | 0.97 | |
| 1,487.0 | 16.80 | 124.00 | 1,463.8 | -115.2 | 169.2 | 204.7 | 0.14 | -0.11 | -0.32 | |
| 1,581.0 | 16.40 | 124.70 | 1,553.9 | -130.3 | 191.4 | 231.6 | 0.48 | -0.43 | 0.74 | |
| 1,674.0 | 16.80 | 125.00 | 1,643.0 | -145.5 | 213.2 | 258.1 | 0.44 | 0.43 | 0.32 | |
| 1,768.0 | 17.60 | 125.40 | 1,732.8 | -161.5 | 235.9 | 285.9 | 0.86 | 0.85 | 0.43 | |
| 1,862.0 | 16.40 | 125.20 | 1,822.7 | -177.4 | 258.3 | 313.4 | 1.28 | -1.28 | -0.21 | |
| 1,955.0 | 17.10 | 124.70 | 1,911.8 | -192.8 | 280.3 | 340.2 | 0.77 | 0.75 | -0.54 | |
| 2,049.0 | 16.50 | 124.30 | 2,001.8 | -208.1 | 302.7 | 367.4 | 0.65 | -0.64 | -0.43 | |
| 2,143.0 | 16.80 | 124.80 | 2,091.8 | -223.4 | 324.9 | 394.3 | 0.35 | 0.32 | 0.53 | |
| 2,236.0 | 17.40 | 125.20 | 2,180.7 | -239.1 | 347.3 | 421.6 | 0.66 | 0.65 | 0.43 | |
| 2,330.0 | 16.60 | 124.10 | 2,270.6 | -254.7 | 369.9 | 449.1 | 0.92 | -0.85 | -1.17 | |
| 2,424.0 | 17.00 | 124.70 | 2,360.6 | -270.1 | 392.3 | 476.3 | 0.46 | 0.43 | 0.64 | |
| 2,517.0 | 16.40 | 123.80 | 2,449.7 | -285.1 | 414.4 | 503.0 | 0.70 | -0.65 | -0.97 | |
| 2,611.0 | 16.40 | 125.90 | 2,539.8 | -300.3 | 436.2 | 529.5 | 0.63 | 0.00 | 2.23 | |
| 2,705.0 | 17.10 | 126.10 | 2,629.8 | -316.2 | 458.1 | 556.6 | 0.75 | 0.74 | 0.21 | |
| 2,798.0 | 17.00 | 127.00 | 2,718.8 | -332.5 | 480.0 | 583.9 | 0.30 | -0.11 | 0.97 | |
| 2,892.0 | 17.90 | 127.30 | 2,808.4 | -349.5 | 502.5 | 612.0 | 0.96 | 0.96 | 0.32 | |
| 2,986.0 | 17.40 | 125.50 | 2,898.0 | -366.4 | 525.4 | 640.5 | 0.79 | -0.53 | -1.91 | |
| 3,079.0 | 15.70 | 126.20 | 2,987.2 | -381.9 | 546.9 | 667.0 | 1.84 | -1.83 | 0.75 | |
| 3,173.0 | 15.80 | 127.00 | 3,077.6 | -397.1 | 567.4 | 692.5 | 0.25 | 0.11 | 0.85 | |
| 3,267.0 | 15.70 | 127.00 | 3,168.1 | -412.5 | 587.7 | 718.0 | 0.11 | -0.11 | 0.00 | |
| 3,360.0 | 15.30 | 124.00 | 3,257.7 | -426.9 | 608.0 | 742.8 | 0.96 | -0.43 | -3.23 | |
| 3,454.0 | 15.20 | 122.20 | 3,348.4 | -440.4 | 628.7 | 767.5 | 0.51 | -0.11 | -1.91 | |
| 3,548.0 | 16.80 | 124.80 | 3,438.8 | -454.7 | 650.2 | 793.4 | 1.86 | 1.70 | 2.77 | |
| 3,641.0 | 17.10 | 119.70 | 3,527.7 | -469.2 | 673.2 | 820.5 | 1.63 | 0.32 | -5.48 | |
| 3,735.0 | 16.30 | 121.20 | 3,617.8 | -482.9 | 696.4 | 847.4 | 0.97 | -0.85 | 1.60 | |
| 3,829.0 | 16.10 | 122.40 | 3,708.0 | -496.7 | 718.7 | 873.6 | 0.41 | -0.21 | 1.28 | |
| 3,922.0 | 15.40 | 120.80 | 3,797.5 | -509.9 | 740.2 | 898.9 | 0.89 | -0.75 | -1.72 | |
| 4,016.0 | 15.70 | 122.20 | 3,888.1 | -523.1 | 761.7 | 924.0 | 0.51 | 0.32 | 1.49 | |
| 4,110.0 | 15.70 | 125.40 | 3,978.6 | -537.2 | 782.8 | 949.4 | 0.92 | 0.00 | 3.40 | |
| 4,203.0 | 15.30 | 126.00 | 4,068.2 | -551.7 | 803.0 | 974.3 | 0.46 | -0.43 | 0.65 | |
| 4,297.0 | 14.80 | 124.00 | 4,159.0 | -565.7 | 823.0 | 998.7 | 0.77 | -0.53 | -2.13 | |
| 4,390.0 | 17.30 | 124.80 | 4,248.4 | -580.3 | 844.2 | 1,024.4 | 2.70 | 2.69 | 0.86 | |
| 4,484.0 | 15.50 | 122.60 | 4,338.5 | -595.0 | 866.3 | 1,050.9 | 2.03 | -1.91 | -2.34 | |
| 4,578.0 | 15.80 | 119.60 | 4,429.0 | -608.1 | 888.0 | 1,076.2 | 0.92 | 0.32 | -3.19 | |
| 4,671.0 | 15.70 | 119.20 | 4,518.6 | -620.5 | 910.0 | 1,101.4 | 0.16 | -0.11 | -0.43 | |
| 4,765.0 | 15.20 | 119.60 | 4,609.2 | -632.8 | 931.8 | 1,126.3 | 0.54 | -0.53 | 0.43 | |
| 4,859.0 | 13.10 | 123.10 | 4,700.3 | -644.7 | 951.4 | 1,149.3 | 2.41 | -2.23 | 3.72 | |
| 4,952.0 | 12.30 | 124.80 | 4,791.0 | -656.1 | 968.4 | 1,169.7 | 0.95 | -0.86 | 1.83 | |
| 5,046.0 | 10.00 | 131.30 | 4,883.2 | -667.2 | 982.8 | 1,187.8 | 2.78 | -2.45 | 6.91 | |
| 5,140.0 | 9.10 | 129.40 | 4,975.9 | -677.3 | 994.6 | 1,203.3 | 1.01 | -0.96 | -2.02 | |
| 5,233.0 | 7.80 | 130.30 | 5,067.9 | -686.0 | 1,005.1 | 1,216.9 | 1.41 | -1.40 | 0.97 | |
| 5,327.0 | 6.20 | 125.40 | 5,161.2 | -693.1 | 1,014.1 | 1,228.4 | 1.82 | -1.70 | -5.21 | |
| 5,421.0 | 3.60 | 125.00 | 5,254.9 | -697.7 | 1,020.7 | 1,236.4 | 2.77 | -2.77 | -0.43 | |
| 5,514.0 | 2.00 | 123.80 | 5,347.8 | -700.3 | 1,024.4 | 1,240.9 | 1.72 | -1.72 | -1.29 | |
| 5,608.0 | 0.30 | 128.50 | 5,441.7 | -701.4 | 1,026.0 | 1,242.8 | 1.81 | -1.81 | 5.00 | |
| 5,702.0 | 0.10 | 107.10 | 5,535.7 | -701.6 | 1,026.3 | 1,243.1 | 0.22 | -0.21 | -22.77 | |
| 5,795.0 | 0.50 | 296.60 | 5,628.7 | -701.4 | 1,026.0 | 1,242.8 | 0.64 | 0.43 | -183.33 | |
| 5,866.2 | 0.95 | 295.64 | 5,700.0 | -701.0 | 1,025.2 | 1,241.9 | 0.64 | 0.64 | -1.35 | |
| TARGET BHL 1310'FNL, 50'FEL | | | | | | | | | | |
| 5,889.0 | 1.10 | 295.50 | 5,722.7 | -700.8 | 1,024.8 | 1,241.5 | 0.64 | 0.64 | -0.61 | |
| 5,983.0 | 1.30 | 302.70 | 5,816.7 | -699.9 | 1,023.1 | 1,239.6 | 0.27 | 0.21 | 7.66 | |

| | | | |
|------------------|---|-------------------------------------|--------------------------------------|
| Company: | EnCana Oil & Gas Weld County CO | Local Co-ordinate Reference: | Well Aristocrat Angus 8-2-4 |
| Project: | SEC.4-T3N-R65W | TVD Reference: | WELL @ 4827.0ft (Original Well Elev) |
| Site: | Aristocrat Angus 1-4 Pad Sec.4-T3N-R65W | MD Reference: | WELL @ 4827.0ft (Original Well Elev) |
| Well: | Aristocrat Angus 8-2-4 | North Reference: | True |
| Wellbore: | Wellbore #1 | Survey Calculation Method: | Minimum Curvature |
| Design: | Wellbore #1 | Database: | Landmark |

| Survey | | | | | | | | | | |
|---------------------------------|-----------------|-------------|---------------------|------------|------------|-----------------------|-----------------------|----------------------|---------------------|--|
| Measured Depth (ft) | Inclination (°) | Azimuth (°) | Vertical Depth (ft) | +N/-S (ft) | +E/-W (ft) | Vertical Section (ft) | Dogleg Rate (°/100ft) | Build Rate (°/100ft) | Turn Rate (°/100ft) | |
| 6,076.0 | 1.20 | 295.70 | 5,909.7 | -698.9 | 1,021.3 | 1,237.5 | 0.20 | -0.11 | -7.53 | |
| 6,170.0 | 1.40 | 303.30 | 6,003.7 | -697.8 | 1,019.5 | 1,235.4 | 0.28 | 0.21 | 8.09 | |
| 6,264.0 | 0.90 | 299.60 | 6,097.6 | -696.8 | 1,017.9 | 1,233.5 | 0.54 | -0.53 | -3.94 | |
| 6,357.0 | 0.50 | 305.70 | 6,190.6 | -696.2 | 1,016.9 | 1,232.4 | 0.44 | -0.43 | 6.56 | |
| 6,451.0 | 0.30 | 26.90 | 6,284.6 | -695.8 | 1,016.7 | 1,232.0 | 0.58 | -0.21 | 86.38 | |
| 6,546.0 | 0.40 | 102.50 | 6,379.6 | -695.6 | 1,017.1 | 1,232.2 | 0.46 | 0.11 | 79.58 | |
| 6,640.0 | 0.60 | 96.00 | 6,473.6 | -695.7 | 1,017.9 | 1,233.0 | 0.22 | 0.21 | -6.91 | |
| 6,734.0 | 0.60 | 114.60 | 6,567.6 | -696.0 | 1,018.9 | 1,233.9 | 0.21 | 0.00 | 19.79 | |
| 6,828.0 | 0.90 | 126.80 | 6,661.6 | -696.7 | 1,019.9 | 1,235.1 | 0.36 | 0.32 | 12.98 | |
| 6,923.0 | 1.00 | 136.40 | 6,756.6 | -697.7 | 1,021.1 | 1,236.7 | 0.20 | 0.11 | 10.11 | |
| 7,017.0 | 1.20 | 126.40 | 6,850.6 | -698.9 | 1,022.4 | 1,238.5 | 0.29 | 0.21 | -10.64 | |
| 7,063.5 | 1.15 | 128.25 | 6,897.1 | -699.5 | 1,023.2 | 1,239.4 | 0.14 | -0.11 | 3.97 | |
| TARGET CIRCLE 1310'FNL & 50'FEL | | | | | | | | | | |
| 7,111.0 | 1.10 | 130.30 | 6,944.6 | -700.0 | 1,023.9 | 1,240.3 | 0.14 | -0.10 | 4.33 | |
| 7,206.0 | 1.10 | 130.50 | 7,039.6 | -701.2 | 1,025.3 | 1,242.2 | 0.00 | 0.00 | 0.21 | |
| 7,300.0 | 1.00 | 126.20 | 7,133.5 | -702.3 | 1,026.6 | 1,243.9 | 0.14 | -0.11 | -4.57 | |
| 7,394.0 | 0.80 | 112.20 | 7,227.5 | -703.0 | 1,027.9 | 1,245.3 | 0.31 | -0.21 | -14.89 | |
| 7,495.0 | 0.70 | 110.10 | 7,328.5 | -703.5 | 1,029.1 | 1,246.6 | 0.10 | -0.10 | -2.08 | |
| 7,540.0 | 0.70 | 110.10 | 7,373.5 | -703.7 | 1,029.7 | 1,247.2 | 0.00 | 0.00 | 0.00 | |

| | | |
|-------------------|--------------------|-------------|
| Checked By: _____ | Approved By: _____ | Date: _____ |
|-------------------|--------------------|-------------|