



Weatherford®

**6 3/4 in. & 4 3/4 in. WeatherfordLWD™
Spectral Gamma Ray & Resistivity
5 in. MEASURED DEPTH
RECORDED DATA
FINAL PRINT**

Company: Anadarko Petroleum Corp.
Well: Camp 15N-26HZ
Field: Camp
Rig: H&P 307
County: Weld

COMPANY		<u>Anadarko Petroleum Corp.</u>	
WELL		<u>Camp 15N-26HZ</u>	
FIELD		<u>Camp</u>	
RIG		<u>H&P 307</u>	
COUNTY		<u>Weld</u>	
API #		<u>05-123-34947</u>	
Latitude:		40.20166° N	x = 3,212,985.90 ft
Longitude:		104.73735° W	y = 1,317,222.15 ft
Other Services:		Directional and Temperature	
Mag Decl:		8.71°	
Mag Dip:		66.85°	

Permanent Datum:	<u>Mean Sea Level</u>		
Log Measured From:	<u>Drill Flgor</u>	Elev: <u>5039 ft</u>	above perm. datum
Depth Reference:	<u>Drillers Tally</u>	Total Depth:	<u>11770 ft</u>
Depth Logged:	6500 ft	to 11770 ft	Runs: 5
Date Logged:	11-Apr-12	to 17-Apr-12	Spud Date: 24-Feb-12
		Elevation	
		K.B.	na
		G.L.	5014 ft
		D.F.	5039 ft
		W.D.	na

Borehole Record			Casing Record			
Hole Size	From	To	Size	Weight	From	To
11.000 in.	0 ft	938 ft	9.625 in.	53.5 lb/ft	Surface	938 ft
8.750 in.	938 ft	7649 ft	7.000 in.	39.0 lb/ft	Surface	7624 ft
6.125 in.	7649 ft	11770 ft				

Borehole Deviation Record			Mud Record			
Hole Size	Min. Inc.	Max. Inc.	Type	Weight	From	To
8.750 in.	0.22°	79.01°	WBM	8.50 - 9.60 ppg	938 ft	11770 ft
6.125 in.	86.61°	92.73°				

All interpretations of log data are opinions based on inferences from electrical or other measurements. Weatherford International does not guarantee the accuracy or correctness of any interpretation or recommendation and we shall not be liable or responsible for any loss, cost, damages or expenses incurred or sustained by anyone resulting from any interpretation or recommendation made by any of our employees or agents.

RUN SUMMARY							
MWD/LWD Run Number	1	2	3	4	5	6	7
Bit Size in.	8.750	8.750	8.750	6.125	6.125		
Bit Type	PDC	PDC	PDC	PDC	PDC		
Bit TFA sq.in.	1.208	1.208	0.648	0.648	0.648		
Bit Start Depth ft	938	4704	6064	7649	7782		
Bit End Depth ft	4704	6064	7649	7782	11770		
Top Log Interval ft	-	-	6500	7614	7712		
Bottom Log Interval ft	-	-	7649	7782	11770		
Begin Log Time hrs	-	-	21:47	15:22	8:10		
Begin Log Date DD-MMM-YY	-	-	11-Apr-12	15-Apr-12	16-Apr-12		
End Log Time hrs	-	-	15:54	17:07	19:02		
End Log Date DD-MMM-YY	-	-	13-Apr-12	15-Apr-12	17-Apr-12		
Drill or Wipe	Drill	Drill	Drill	Drill	Drill		
Flow Rate gal/min	614	598	572	302	299		
Max AV / CV @ MWD ft/min	485 / 398	472 / 403	452 / 434	450 / 370	470 / 370		
Min Inc @ Depth deg @ ft	0.22 @ 959	9.64 @ 4738	6070 @ 6638	90.12 @ 7732	86.61 @ 9818		
Max Inc @ Depth deg @ ft	12.07 @ 4074	11.89 @ 5309	79.01 @ 7589	90.12 @ 7732	92.73 @ 7827		
MUD DATA							
Depth ft	4704	6064	7649	7782	11770		
Fluid Type	WBM	WBM	WBM	WBM	WBM		
Mud Weight ppG	8.50	8.60	9.50	9.70	9.60		
Plastic Viscosity cP	14	14	18	21	16		
Solids / Sand %	1.5 / 0.05	1.5 / 0.05	7.0 / 0.05	10.6 / 0.1	10.6 / 0.1		
NaCl Equiv. Chlorides ppm	350	400	1485	1850	1850		
pH	WBM	WBM	WBM	WBM	WBM		
Oil:Water Ratio % Vol	0.0 : 100.0	0.0 : 100.0	0.0 : 100.0	0.0 : 100.0	0.0 : 100.0		
Rm @ Temperature ohm-m @ deg F	na	na	na	1.00 @ 75 F	1.00 @ 75 F		
Rmc @ Temperature ohm-m @ deg F	na	na	na	na	na		
Rmf @ Temperature ohm-m @ deg F	na	na	na	1.00 @ 75 F	1.00 @ 75 F		
KCl % Vol	0	0	0	0	0		
Client Representative	P. Cain	P. Cain	D. Barrone	D. Barrone	D. Barrone		
WeatherfordLWD Engineer	R. Simmons	R. Simmons	R. Simmons	J. Hunter	J. Hunter		

EQUIPMENT SUMMARY					
MWD/LWD Run Number	1	2	3	4	5
PP Serial Number	CP20216PDYHIR-T1	CP20216PDYHIR-T1	CP20216PDYHIR-T1	na	na
HEL Serial Number	na	na	na	NW20300PDBB4.75	NW20300PDBB4.75
MFR Serial Number	na	na	na	NW20307RBBK4.75M1	NW20307RBBK4.75M1
IDS Serial Number	na	na	na	NW20303BI4.75M1	NW20308BI4.75
SAGR Serial Number	na	na	na	NW20304JB4.75M1	NW20309JB4.75
Sensor to Bit Offsets / Acquisition Rates					
Directional	ft / sec	58.96 / RT	60.28 / RT	60.21 / RT	50.23 / RT
Gamma Ray	ft / sec	44.75 / 16	46.09 / 16	46.02 / 16	35.62 / 10
Resistivity	ft / sec	na	na	na	71.46 / 5
Other Information					
Total BHA Length	ft	97.69	97.72	94.70	139.37
BHA Assembly Type		Steerable	Steerable	Steerable	Steerable
Stabilizer Location	ft	na	na	na	26.78
Stabilizer Location	ft	na	na	na	102.57
Stabilizer Location	ft	na	na	na	na
Run Circulating Time	hr	16.85	9.25	53.63	3.10
Run Drilling Time	hr	10.74	5.91	26.49	1.36

MUD SUMMARY

Date and Time	Run	Bit Depth	Mud Weight	% K	Rm @ Temp	Rmf @ Temp	Rmc @ Temp	BHCT
10 Apr 12 @ 06:00	01	4704 ft	8.50 ppg	0	na	na	na	122 F
11 Apr 12 @ 00:00	02	6064 ft	8.60 ppg	0	na	na	na	153 F
13 Apr 12 @ 18:00	03	7649 ft	9.50 ppg	0	na	na	na	170 F
15 Apr 12 @ 18:00	04	7782 ft	9.70 ppg	0	1.00 @ 75 F	1.00 @ 75 F	na	175 F
17 Apr 12 @ 18:00	05	11770 ft	9.60 ppg	0	1.00 @ 75 F	1.00 @ 75 F	na	251 F

MWD/LWD RUN REMARKS		
<div>Run Number:1 :: RECORDED DATA LOG</div> <div>WFT Services Provided: Real Time Logging: Temperature. Directional Services: On demand Inclination and Azimuth.</div>		
<div>Run Number:2 :: RECORDED DATA LOG</div> <div>WFT Services Provided: Real Time Logging: Temperature. Directional Services: On demand Inclination and Azimuth.</div>		
<div>Run Number:3 :: RECORDED DATA LOG</div> <div>WFT Services Provided: Recorded and Real Time Logging: Gamma Ray and Temperature. Directional Services: On demand Inclination and Azimuth.</div> <div>Borehole and Environmental Correction: Collar O.D.:6.750 in. Collar I.D.:3.250 in. K1 Factor:2.8010 Gamma Ray: Collar O.D., Collar I.D. and K1 factor.</div>		
<div>Run Number:4 :: RECORDED DATA LOG</div> <div>WFT Services Provided: Recorded and Real Time Logging: Gamma Ray, Deep and Shallow Resistivity and Temperature. Directional Services: On demand Inclination and Azimuth.</div> <div>Borehole and Environmental Correction: Hole Size:6.125 in. Mud Weight:9.70 ppg Borehole Temperature:175 F Mud Type:WBM Drilling Fluid Resistivity:1.00 ohm-m KCl Concentration:0% Gamma Ray: Corrected for mud weight, hole size and KCl concentration. Resistivities: Corrected for borehole temperature, hole size, drilling fluid resistivity and dielectric correction.</div>		
<div>Run Number:5 :: RECORDED DATA LOG</div> <div>WFT Services Provided: Recorded and Real Time Logging: Gamma Ray, Deep and Shallow Resistivity and Temperature. Directional Services: On demand Inclination and Azimuth.</div> <div>Borehole and Environmental Correction: Hole Size:6.125 in. Mud Weight:9.60 ppg Borehole Temperature:251 F Mud Type:WBM Drilling Fluid Resistivity:1.00 ohm-m KCl Concentration:0% Gamma Ray: Corrected for mud weight, hole size and KCl concentration. Resistivities: Corrected for borehole temperature, hole size, drilling fluid resistivity and dielectric correction.</div>		

MWD/LWD LOG COMMENTS

Comment No. 1-1

RECORDED DATA LOG

Start of MWD Drilling Run 03

Weatherford International provided 6 3/4 in. Directional, Gamma Ray and Temperature for Run 03.

Run 03 started formation drilling April 11, 2012 at 21:47 at 6500 MD / 6418 TVD. Weatherford International logged the 8.750 in. borehole.

The WBM at the start of drilling was 9.00 ppg.

Comment No. 1-2

End of MWD Drilling Run 03

Run 03 ended drilling formation April 13, 2012 at 15:54 at 7649 MD / 7246 TVD.

The WBM at the end of drilling was 9.50 ppg.

Comment No. 2-1

RECORDED DATA LOG

Start of LWD Drilling Run 04

Weatherford International provided 4 3/4 in. Directional, Resistivity, Spectral Gamma Ray and Temperature for Run 04.

Run 04 started formation drilling April 15, 2012 at 15:22 at 7649 MD / 7246 TVD. Weatherford International logged the 6.125 in. borehole.

The WBM at the start of drilling was 9.70 ppg.

Comment No. 2-2

End of LWD Drilling Run 04

Run 04 ended drilling formation April 15, 2012 at 17:07 at 7782 MD / 7250 TVD.

The WBM at the end of drilling was 9.70 ppg.

Comment No. 3-1

RECORDED DATA LOG

Start of LWD Drilling Run 05

Weatherford International provided 4 3/4 in. Directional, Resistivity, Spectral Gamma Ray and Temperature for Run 05.

Run 05 started formation drilling April 16, 2012 at 8:10 at 7782 MD / 7250 TVD. Weatherford International logged the 6.125 in. borehole.

The WBM at the start of drilling was 9.70 ppg.

Comment No. 3-2

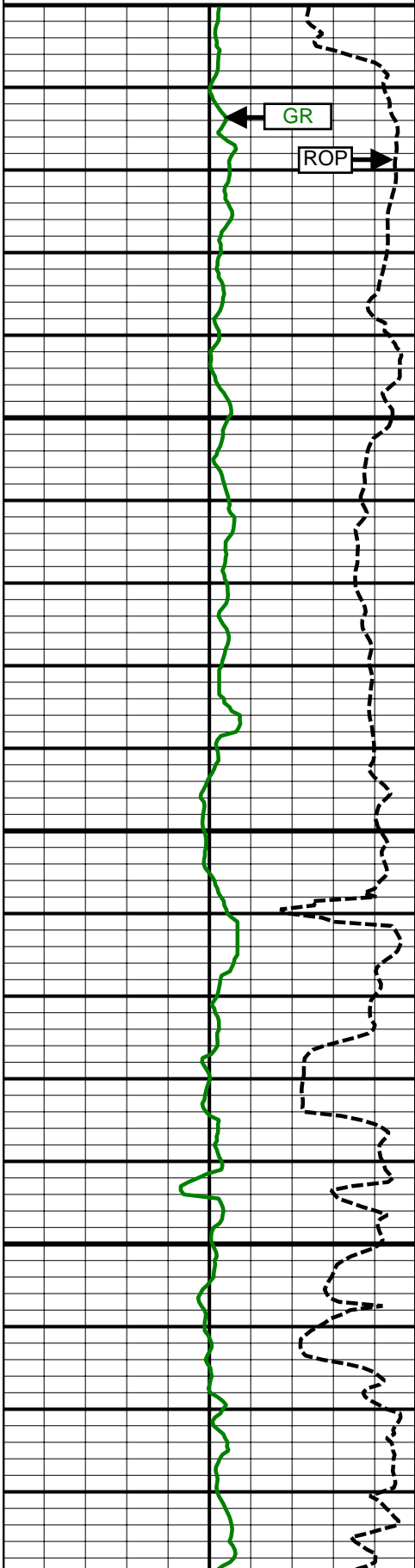
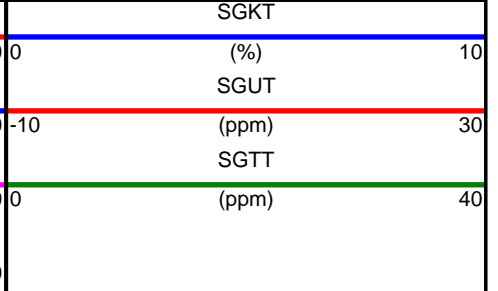
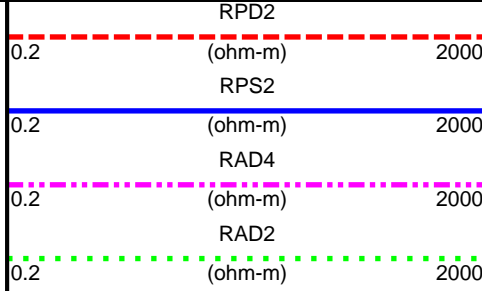
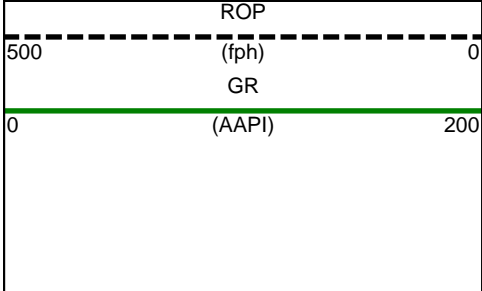
End of LWD Drilling Run 05

Run 05 ended drilling formation April 17, 2012 at 19:02 at 11770 MD / 7226 TVD.

The WBM at the end of drilling was 9.60 ppg.

CURVE SPECIFICATIONS				
CURVE TYPE	MNEMONIC	UNITS	COMMENTS	CORRECTIONS
Rate of Penetration	ROP	fph	Rate of Penetration 3.0 ft window 0.5 ft Exponential Smoothing	None
Gamma Ray	GR	AAPI	Gamma Ray 3.0 ft window 0.5 ft Exponential Smoothing	See LWD Run Remarks
Deep Phase Resistivity	RPD2	ohm-m	2MHz Deep Phase Resistivity 3.0 ft window 0.5 ft Exponential Smoothing	
Deep Attenuation Resistivity	RAD4	ohm-m	400kHz Deep Attenuation Resistivity 3.0 ft window 0.5 ft Exponential Smoothing	
Shallow Phase Resistivity	RPS2	ohm-m	2MHz Shallow Phase Resistivity 3.0 ft window 0.5 ft Exponential Smoothing	
Deep Attenuation Resistivity	RAD2	ohm-m	2MHz Deep Attenuation Resistivity 3.0 ft window 0.5 ft Exponential Smoothing	
Potassium Total	SGKT	%	Potassium Concentration 3.0 ft window 0.5 ft Two Stage Smoothing	
Uranium Total	SGUT	ppm	Uranium Concentration 3.0 ft window 0.5 ft Two Stage Smoothing	
Thorium Total	SGTT	ppm	Thorium Concentration 3.0 ft window 0.5 ft Two Stage Smoothing	

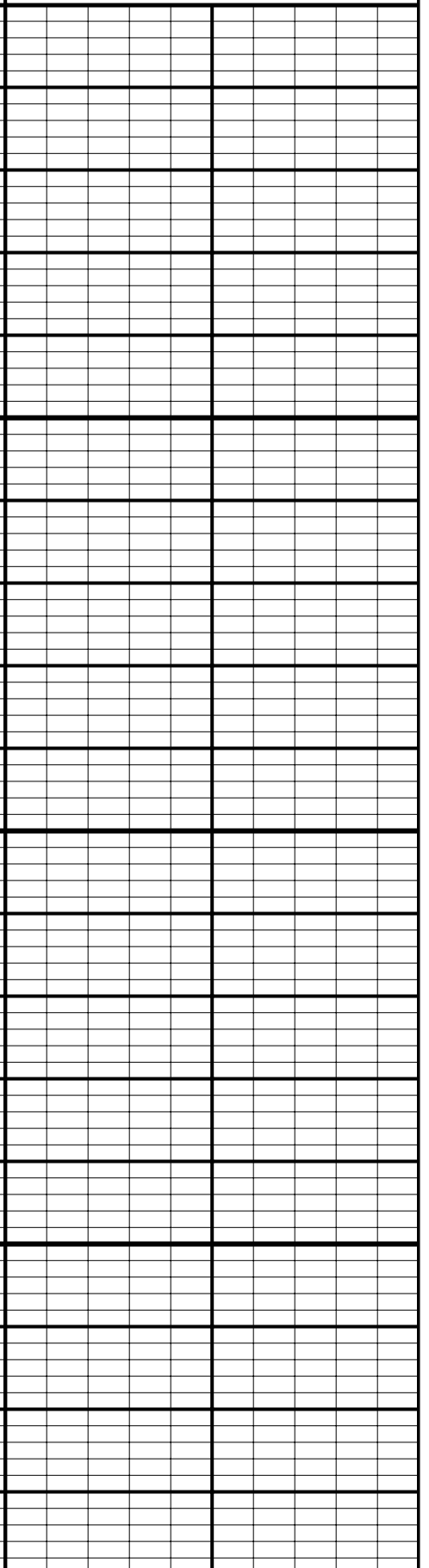
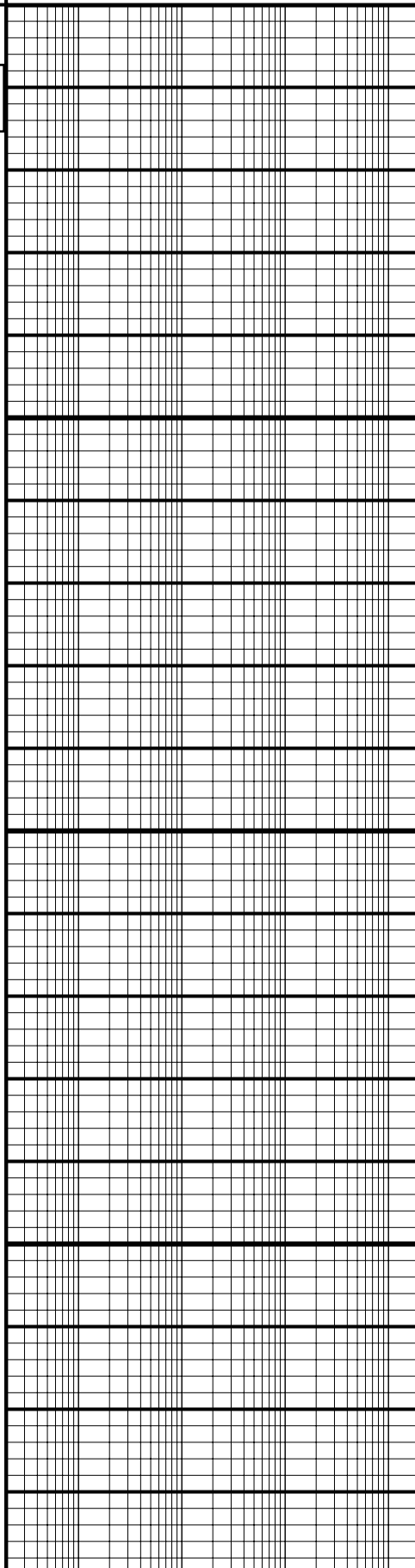
5 Inch - Measured Depth

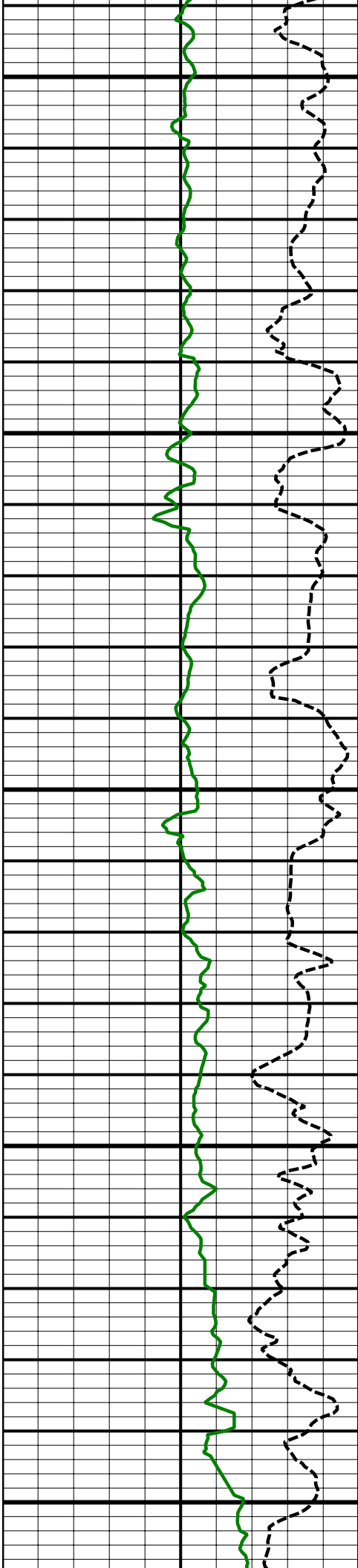


6600 MD

Comment No. 1-1

6700 MD

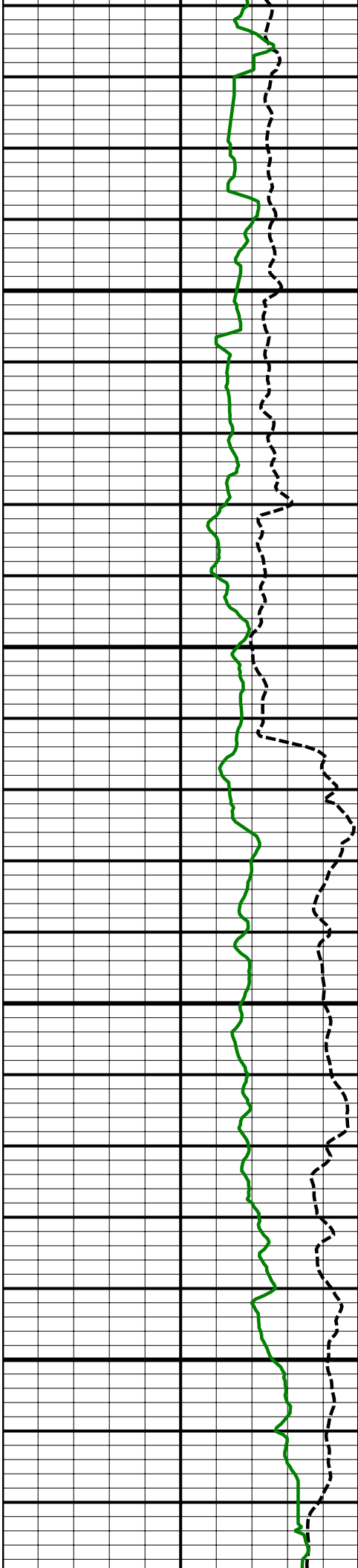




6800
MD

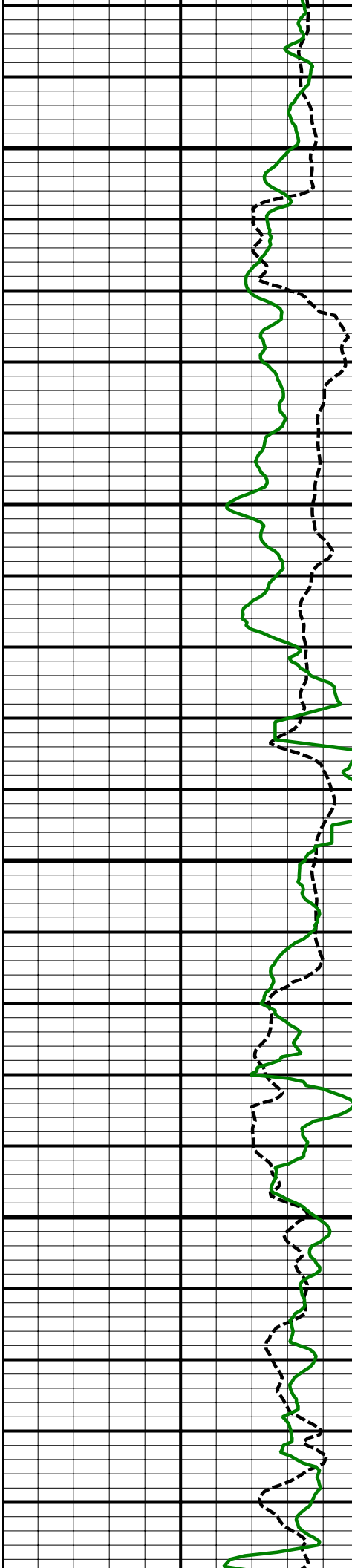
6900
MD

7000
MD



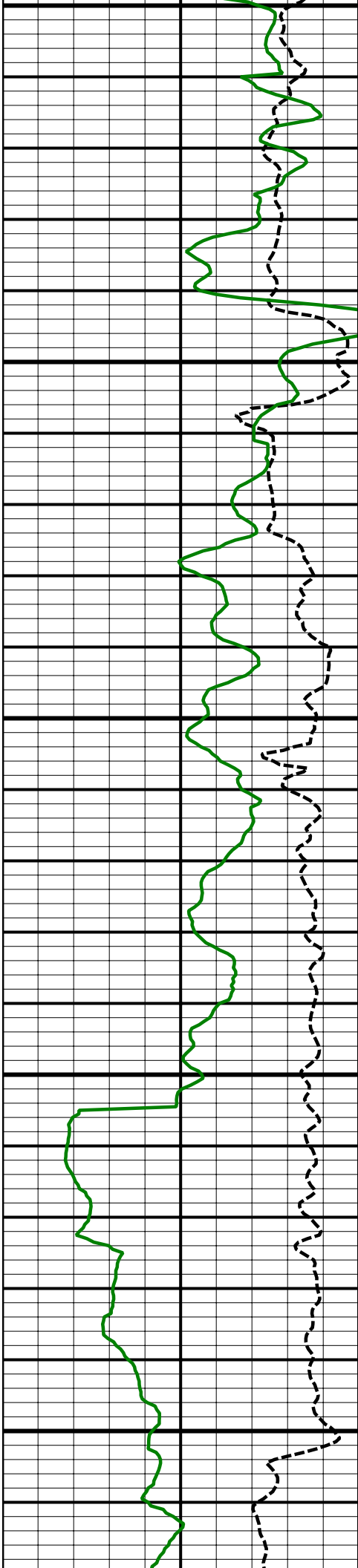
7100
MD

7200
MD



7300
MD

7400
MD

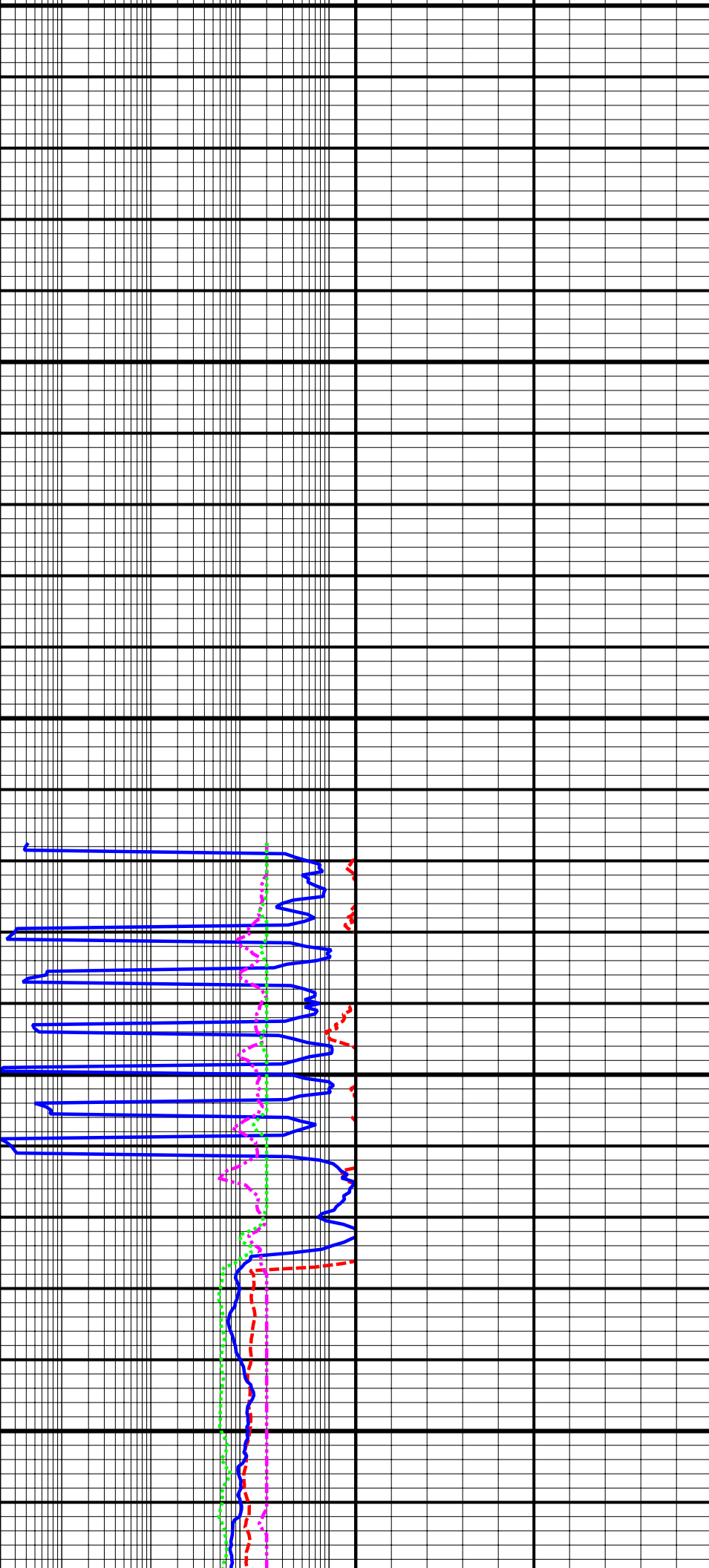


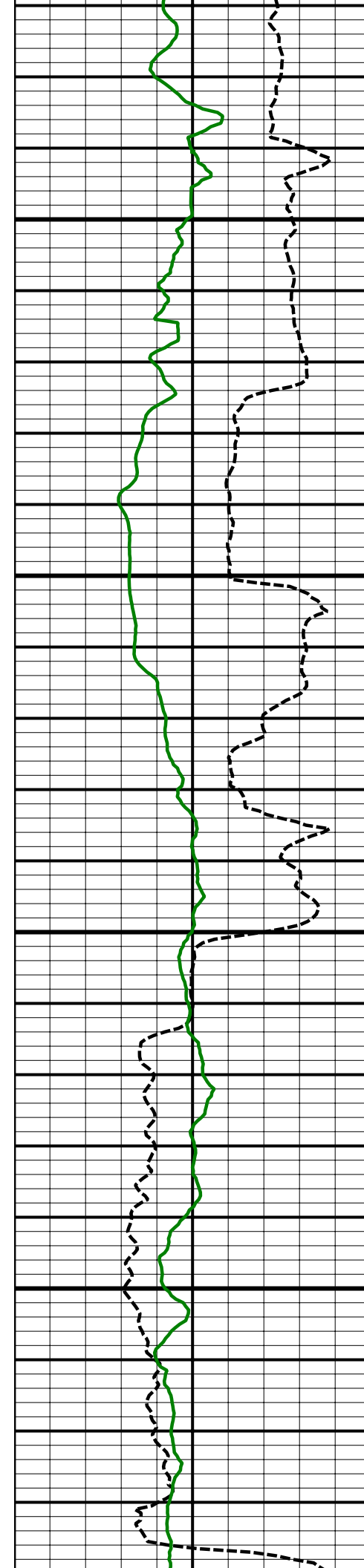
7500
MD

7600
MD

Comment
No. 1-2

Comment
No. 2-1



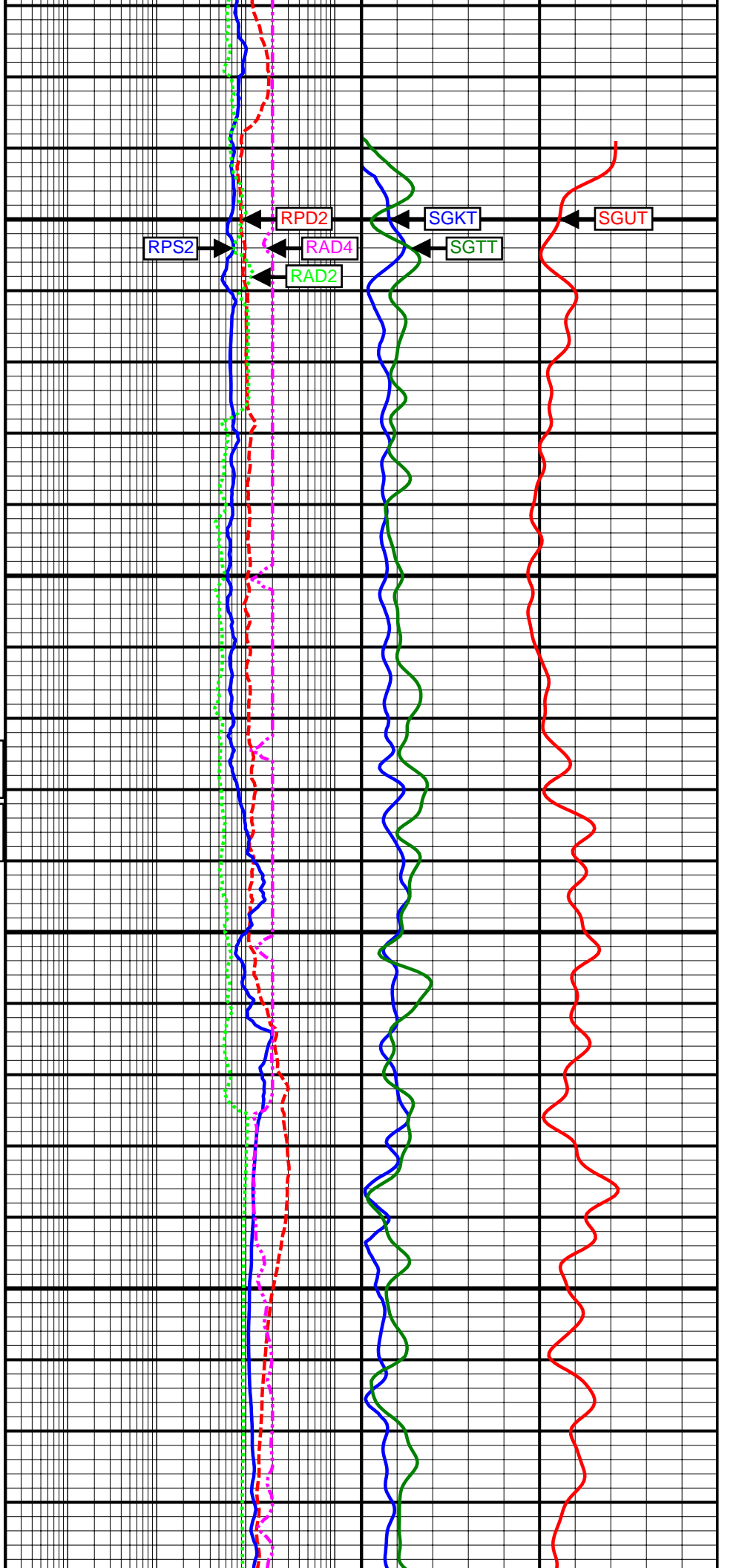


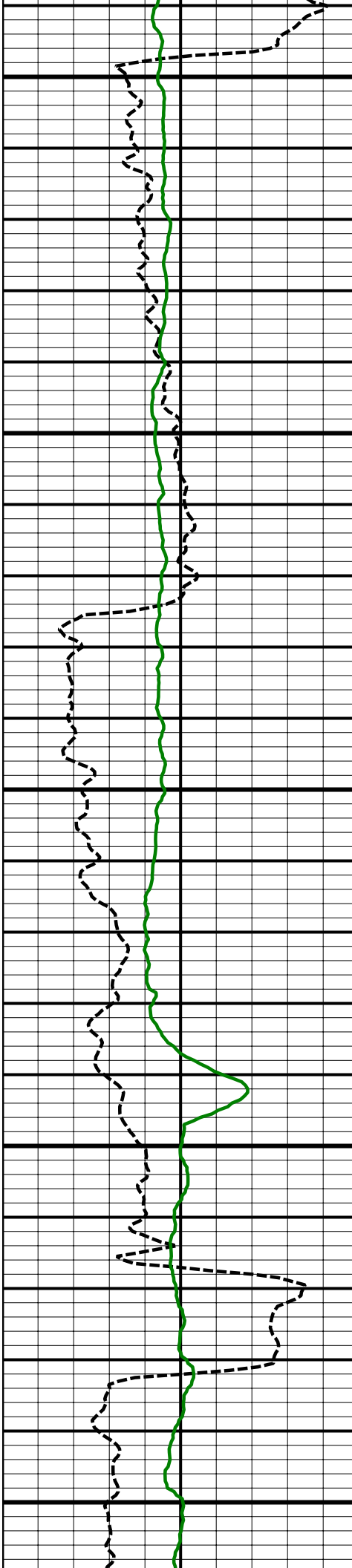
7700
MD

Comment
No. 2-2

Comment
No. 3-1

7800
MD

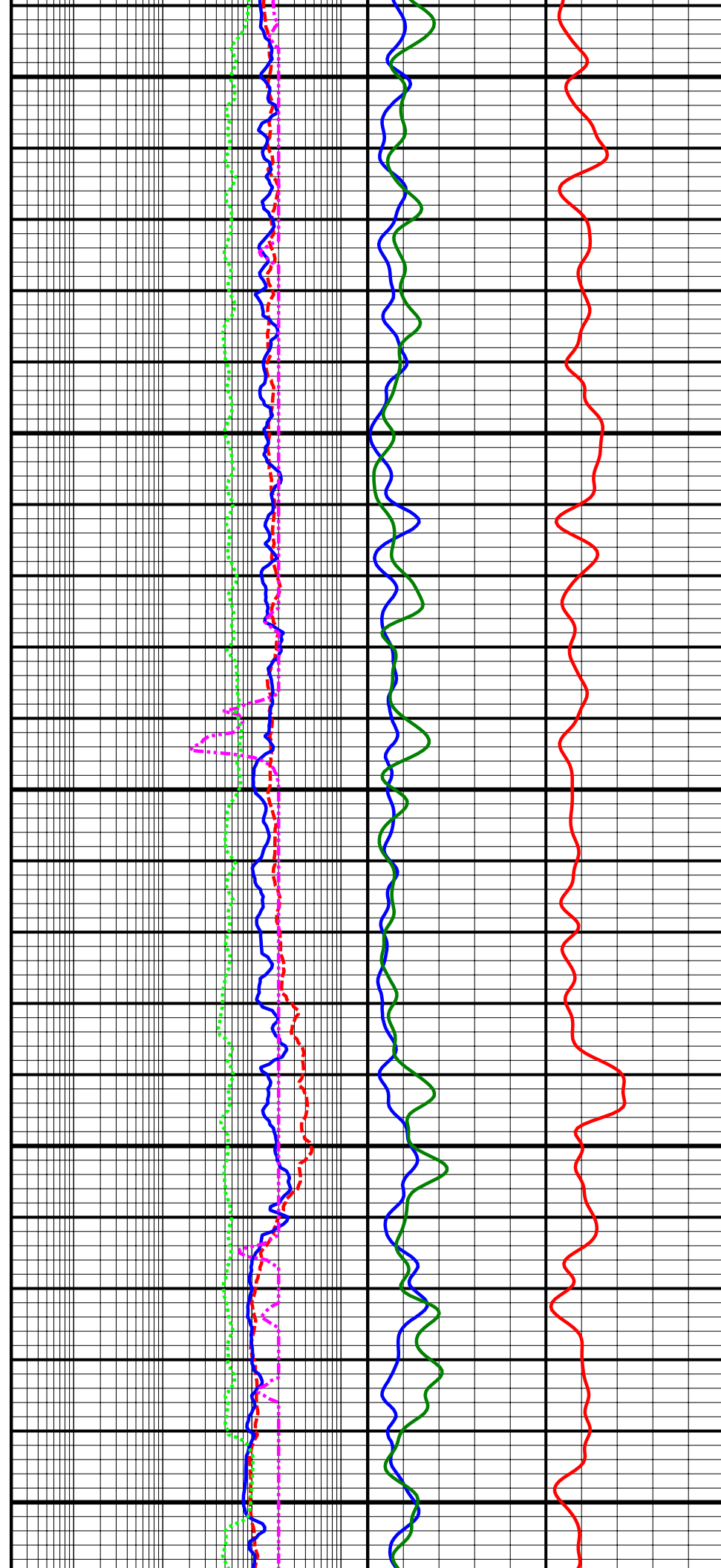


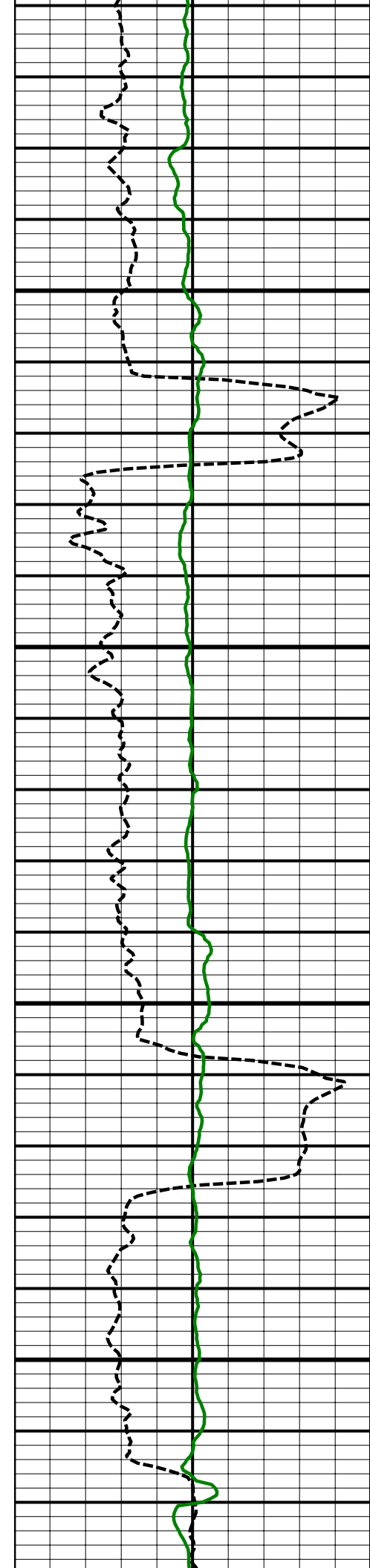


7900
MD

8000
MD

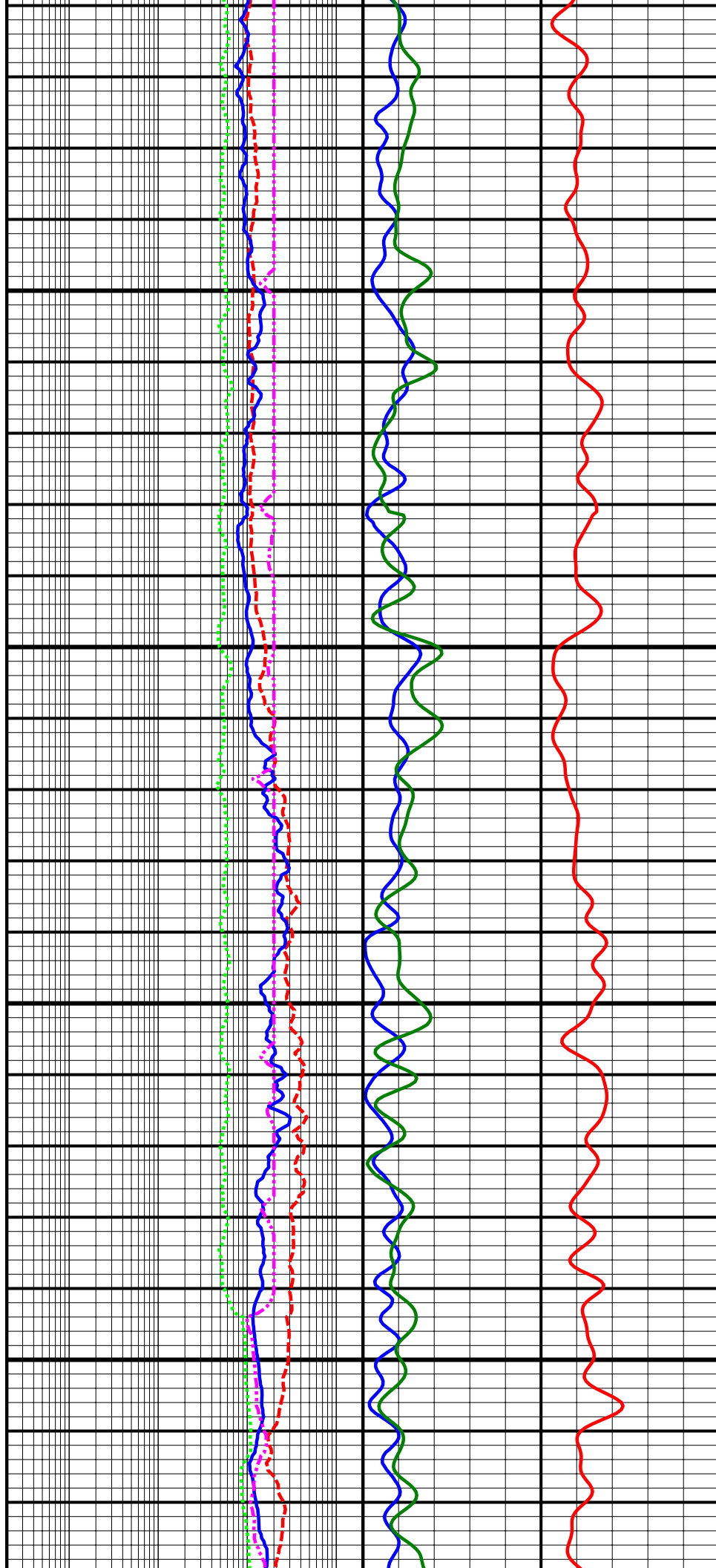
8100
MD

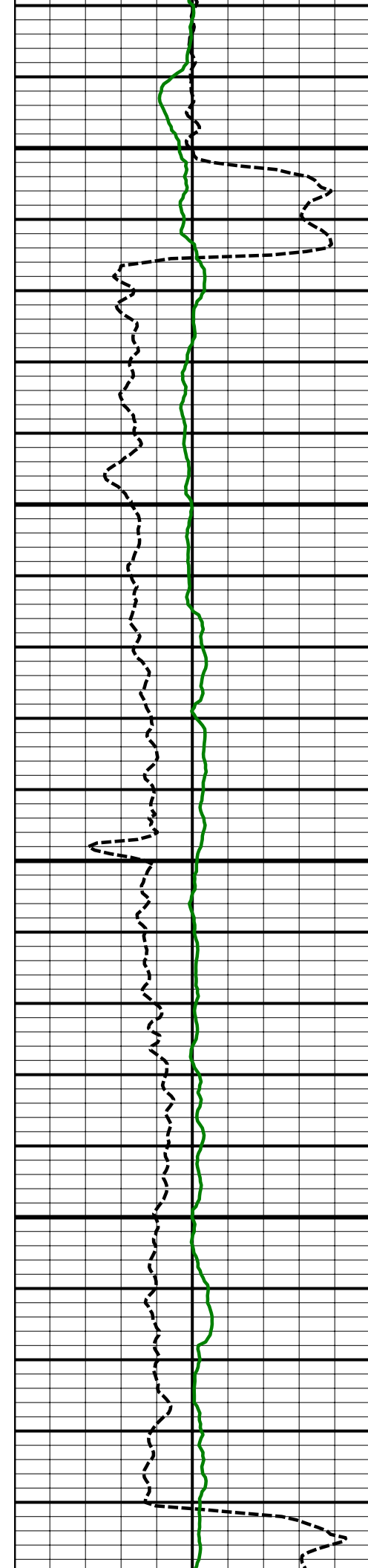




8200
MD

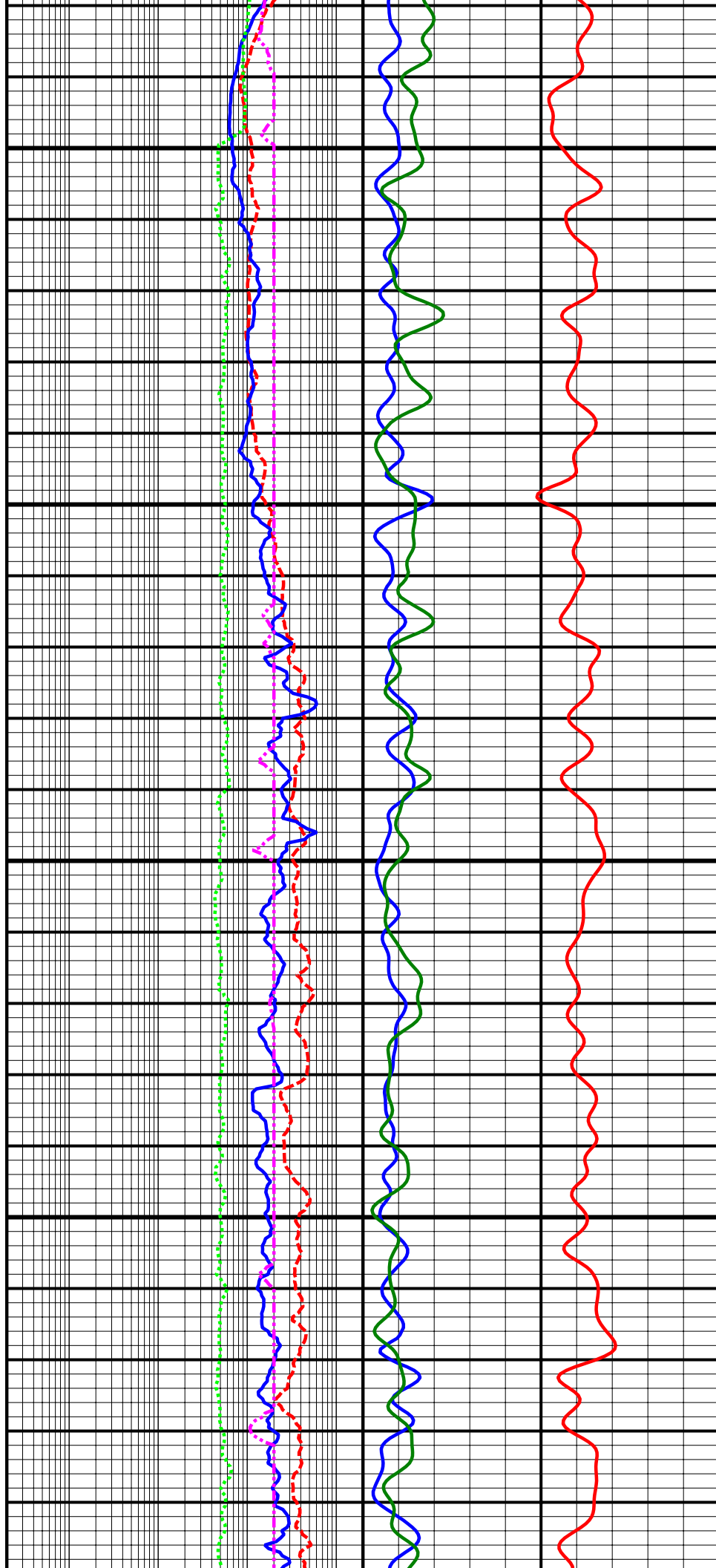
8300
MD

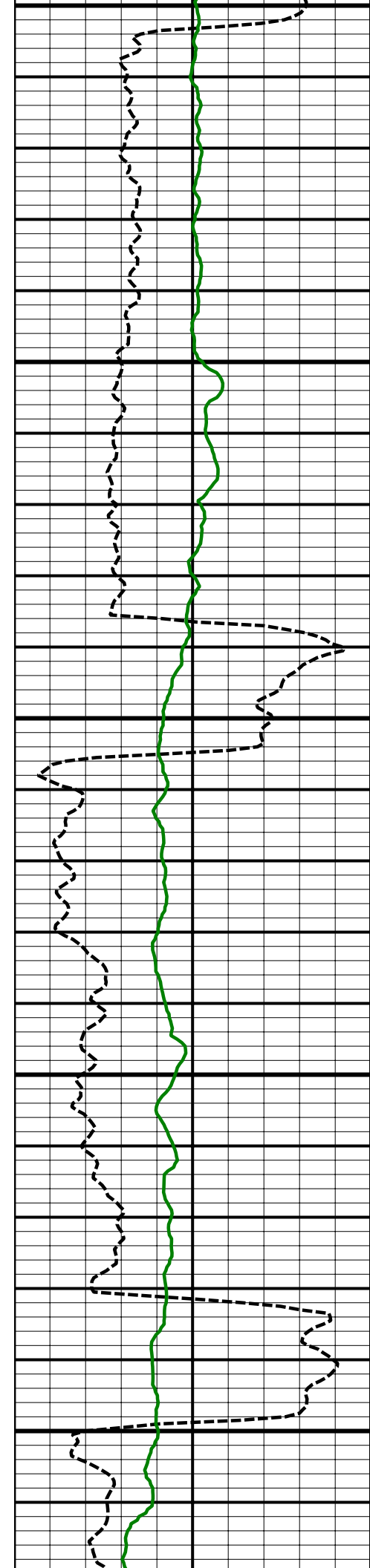




8400
MD

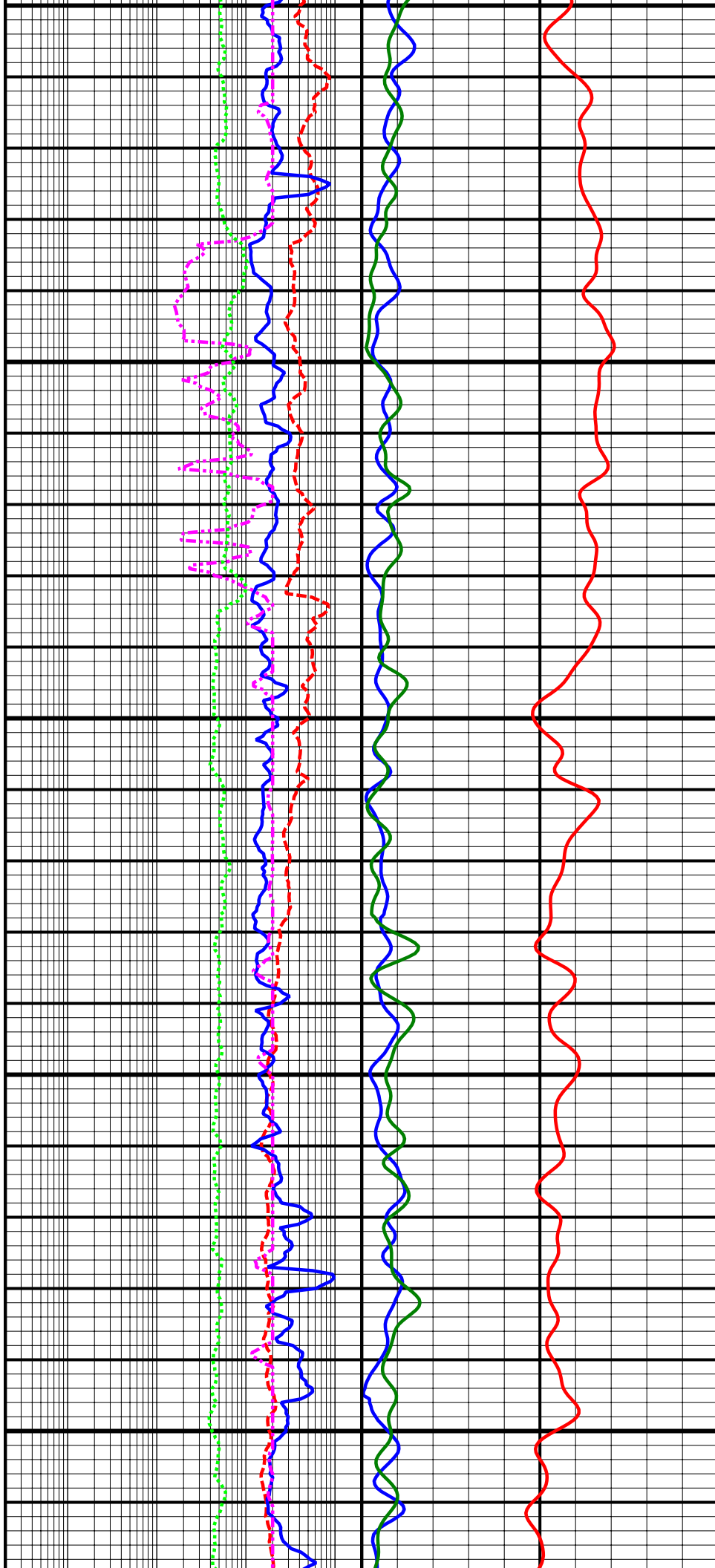
8500
MD

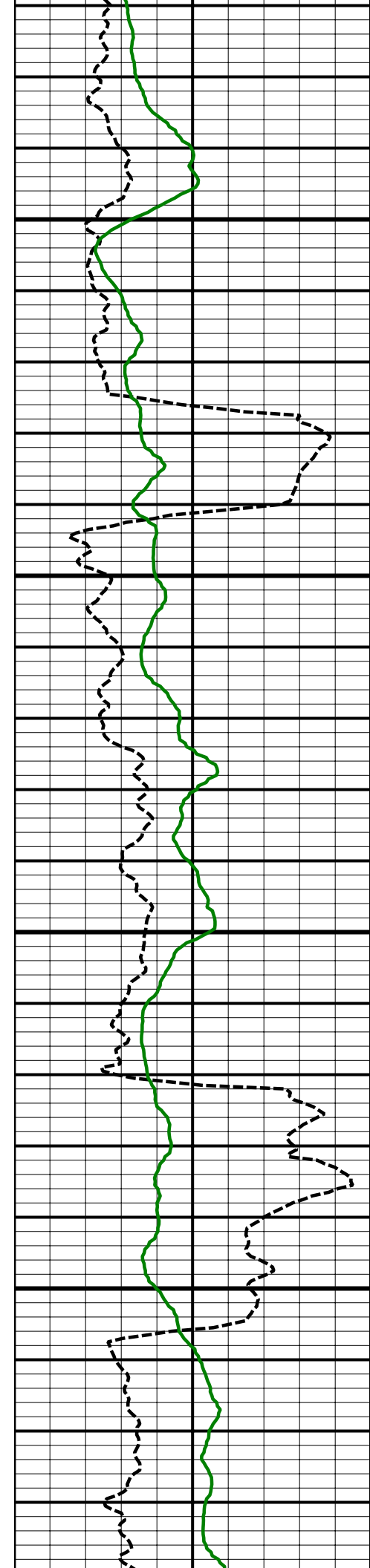




8600
MD

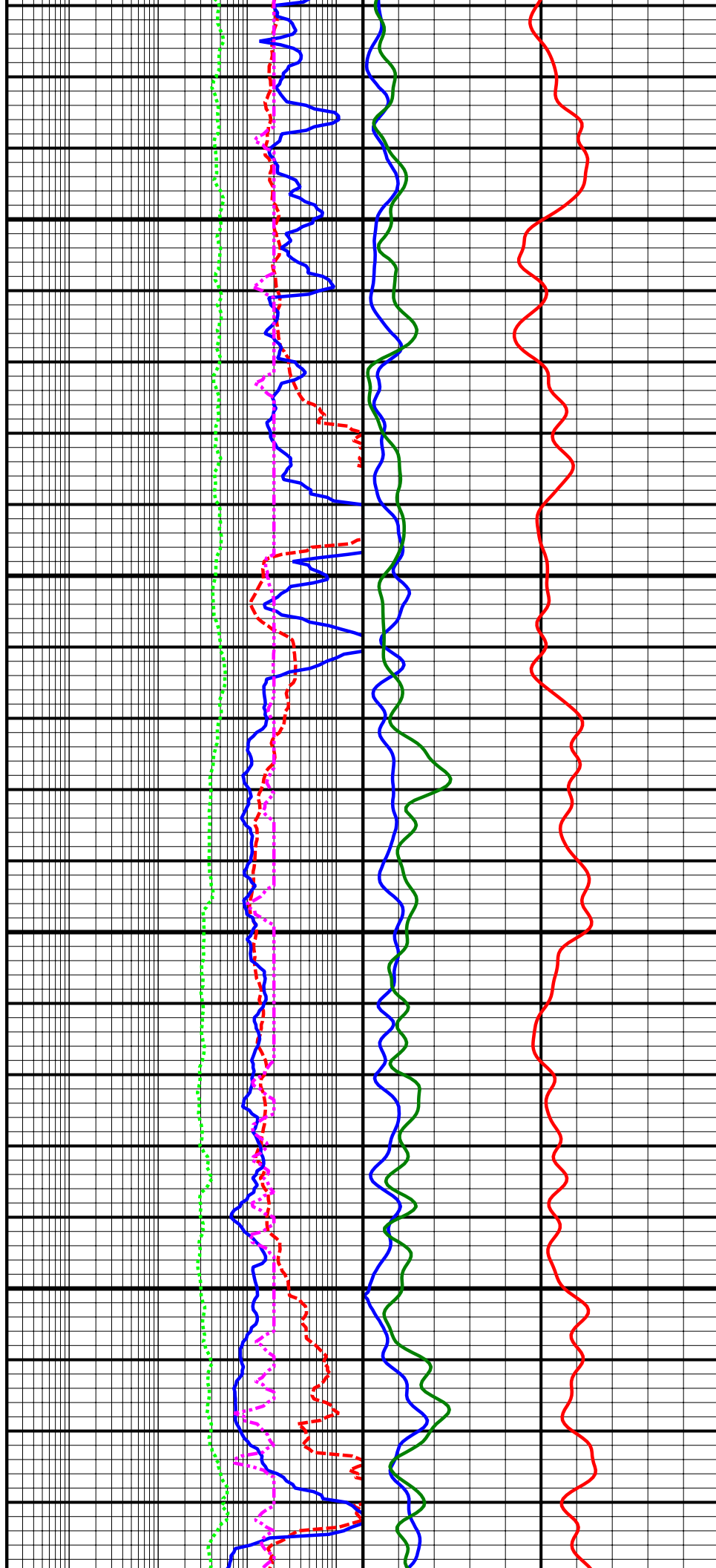
8700
MD





8800
MD

8900
MD

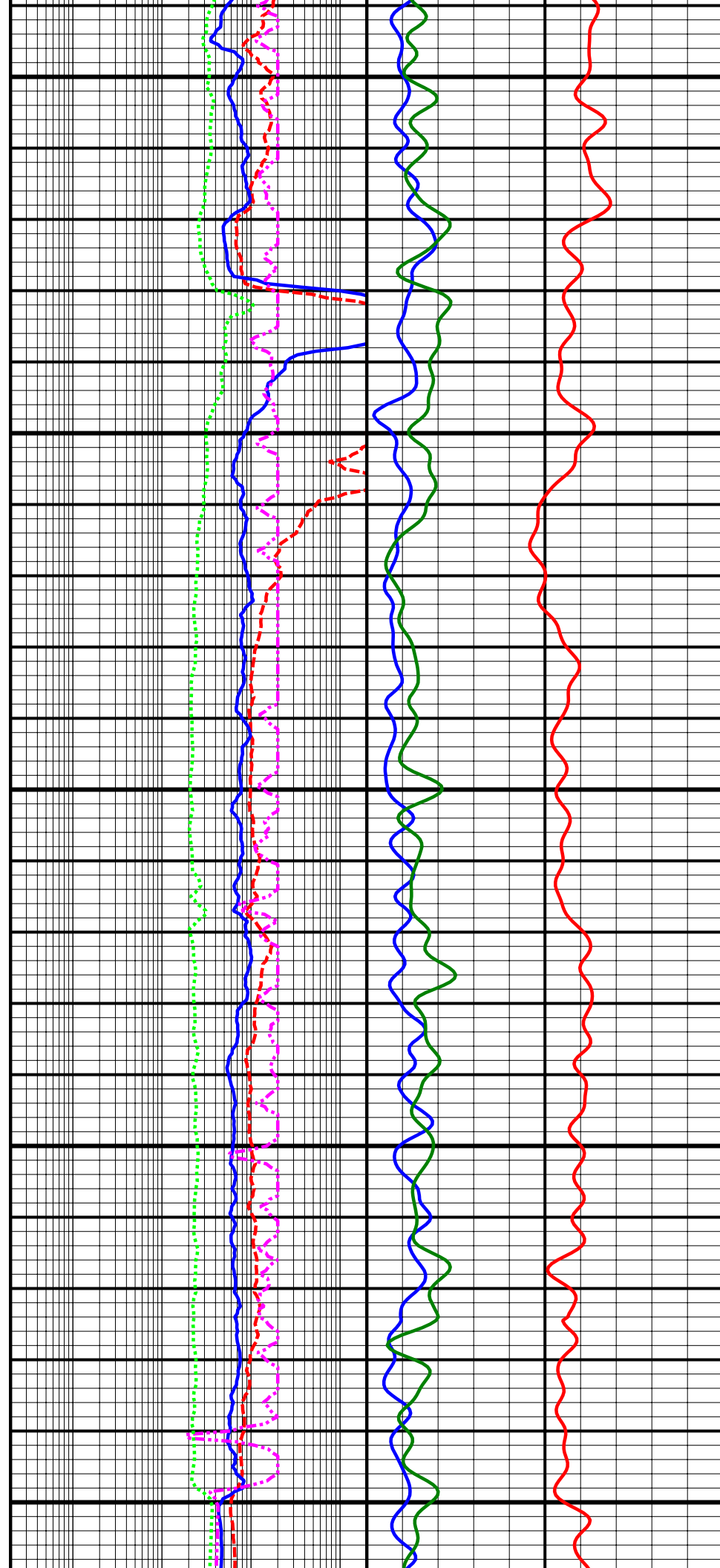


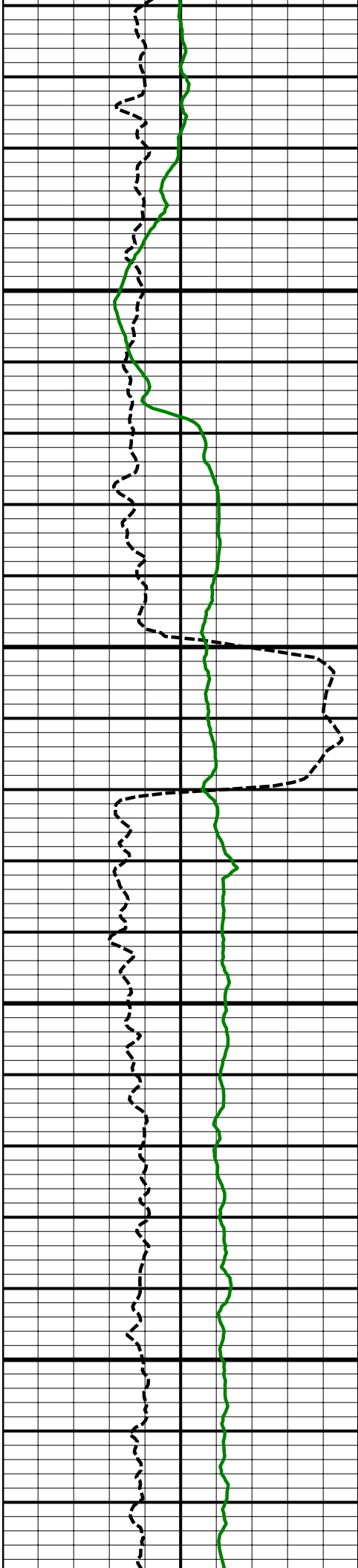


9000
MD

9100
MD

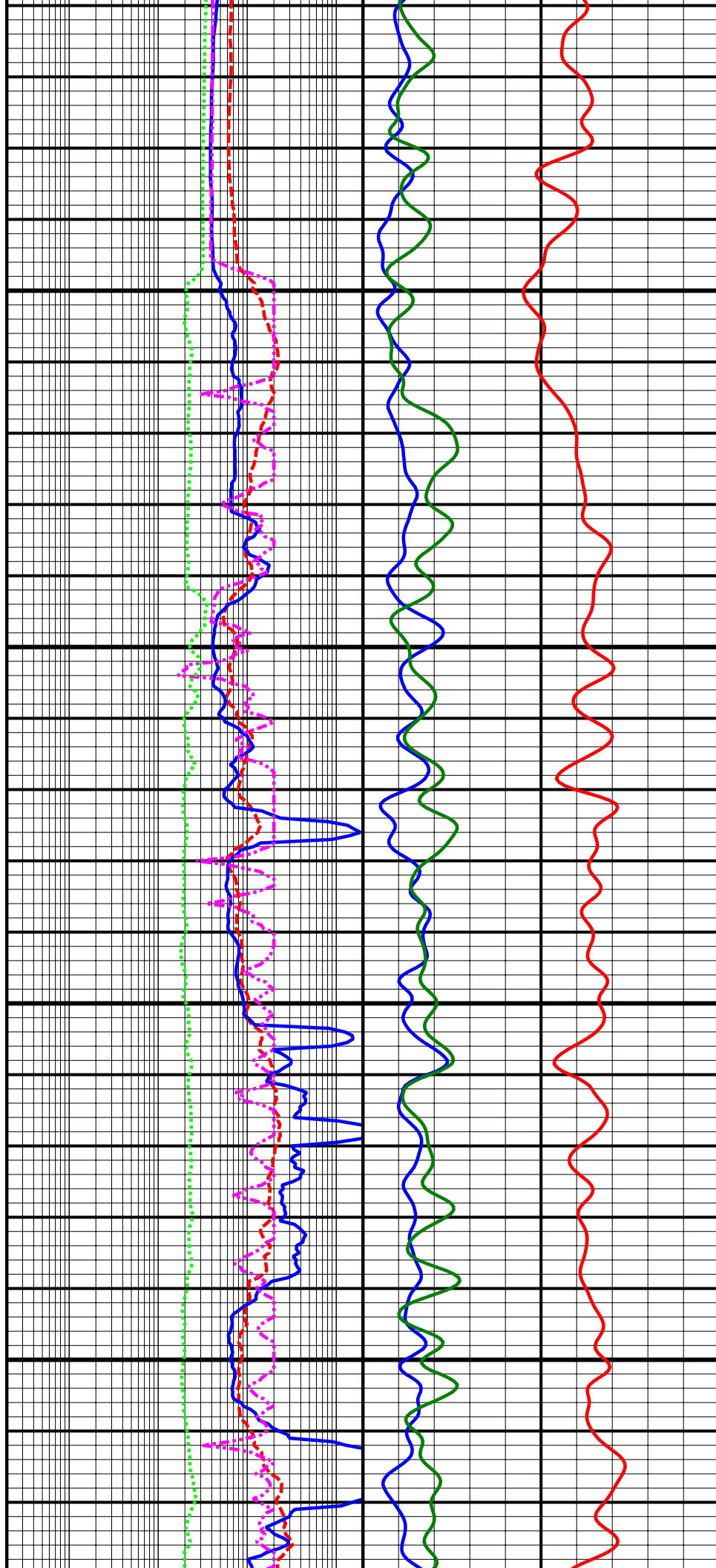
9200
MD

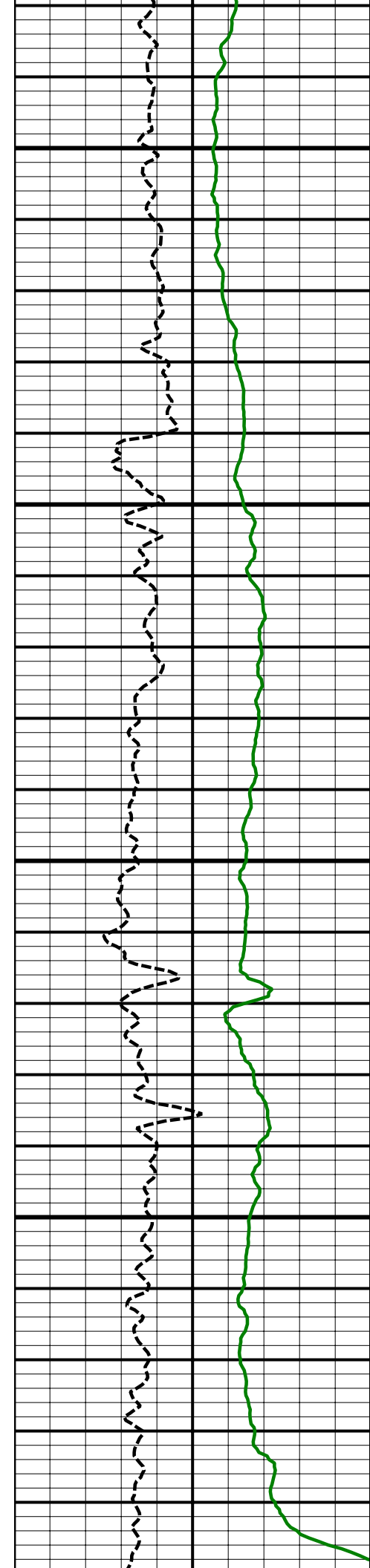




9300
MD

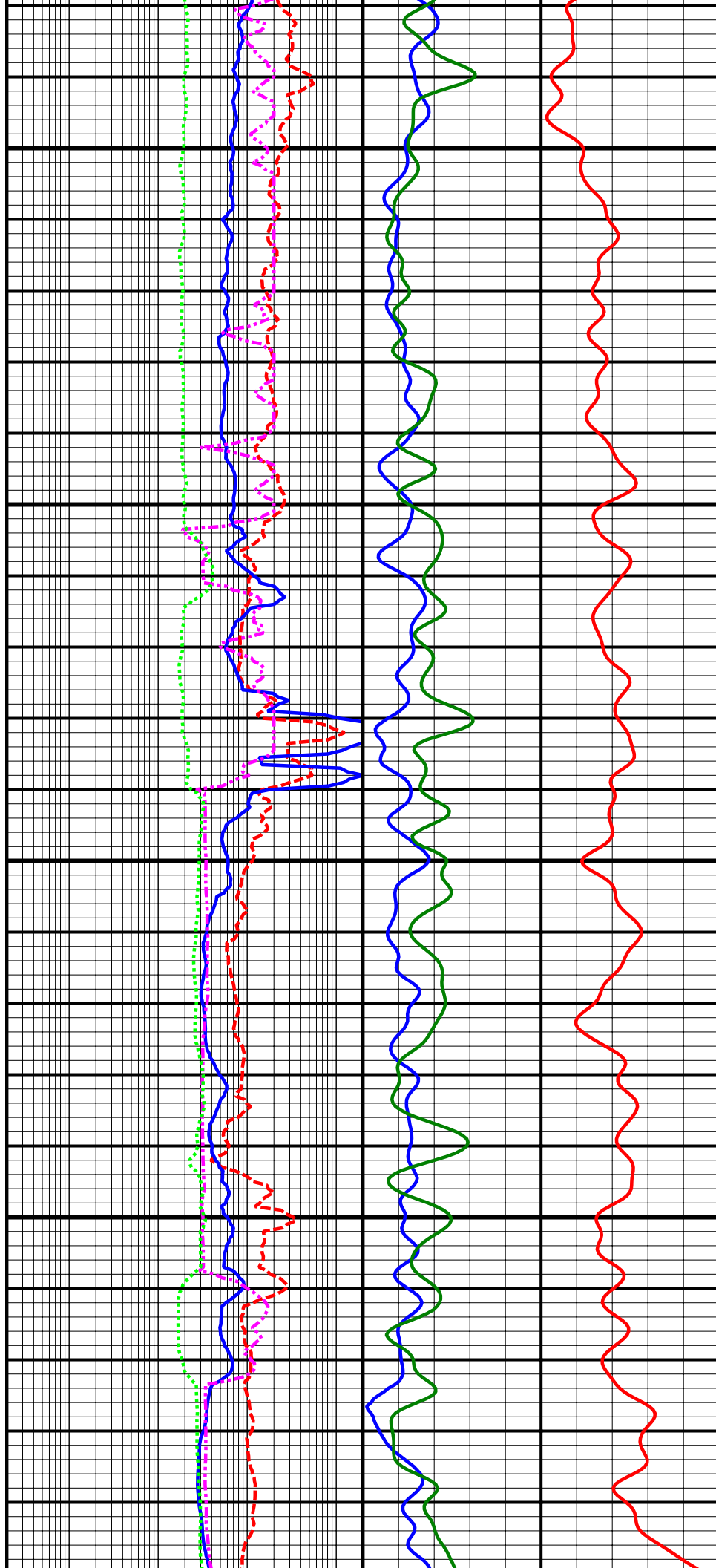
9400
MD

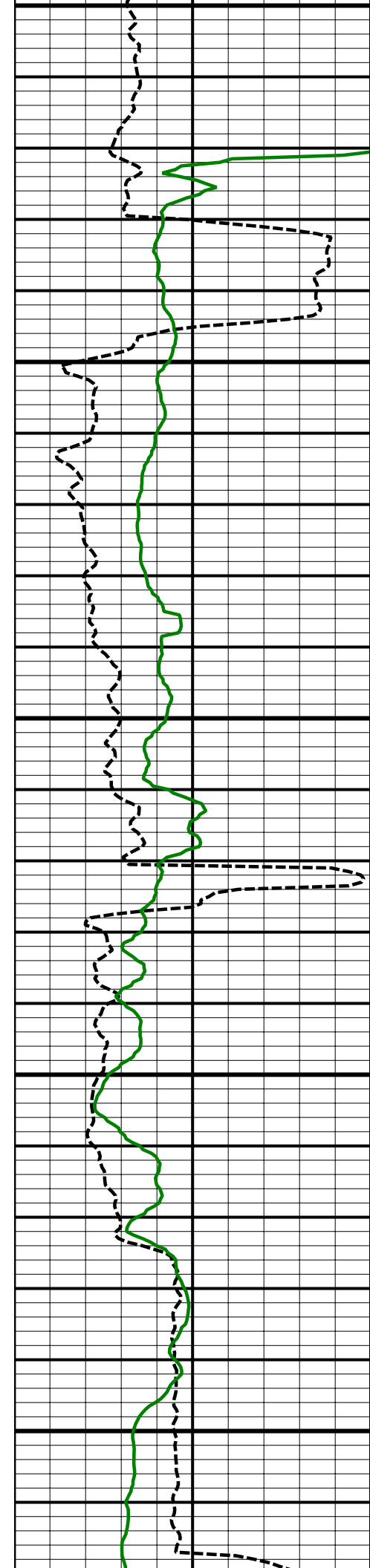




9500
MD

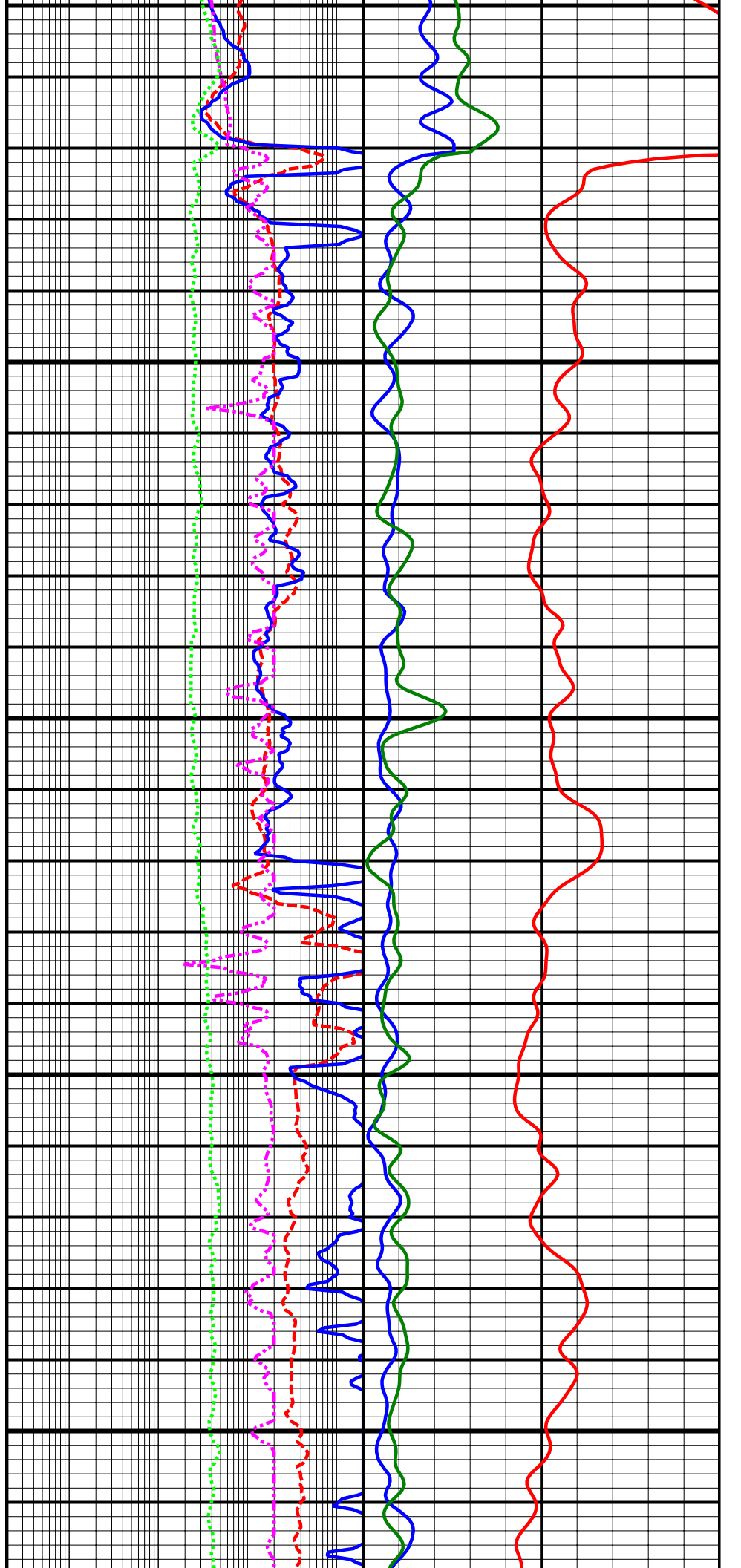
9600
MD

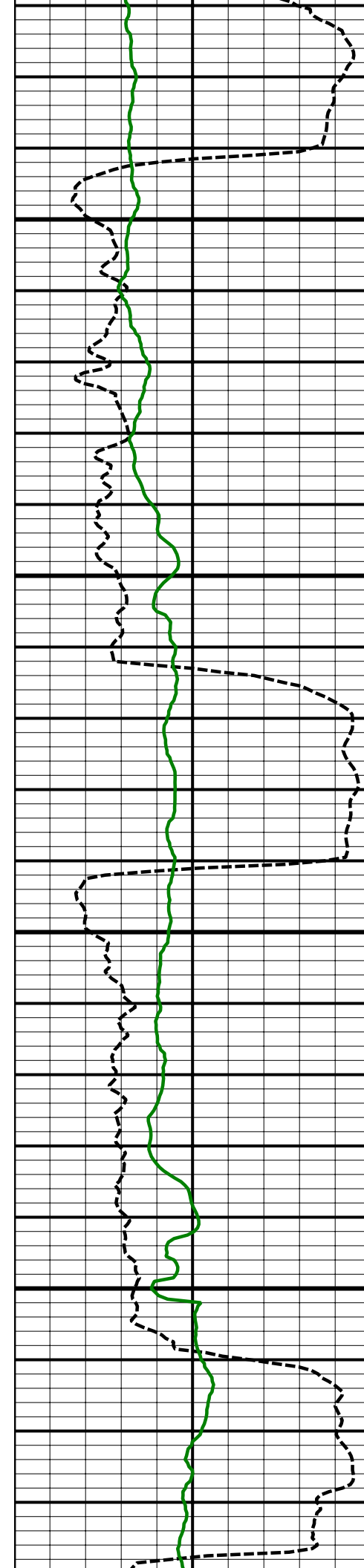




9700
MD

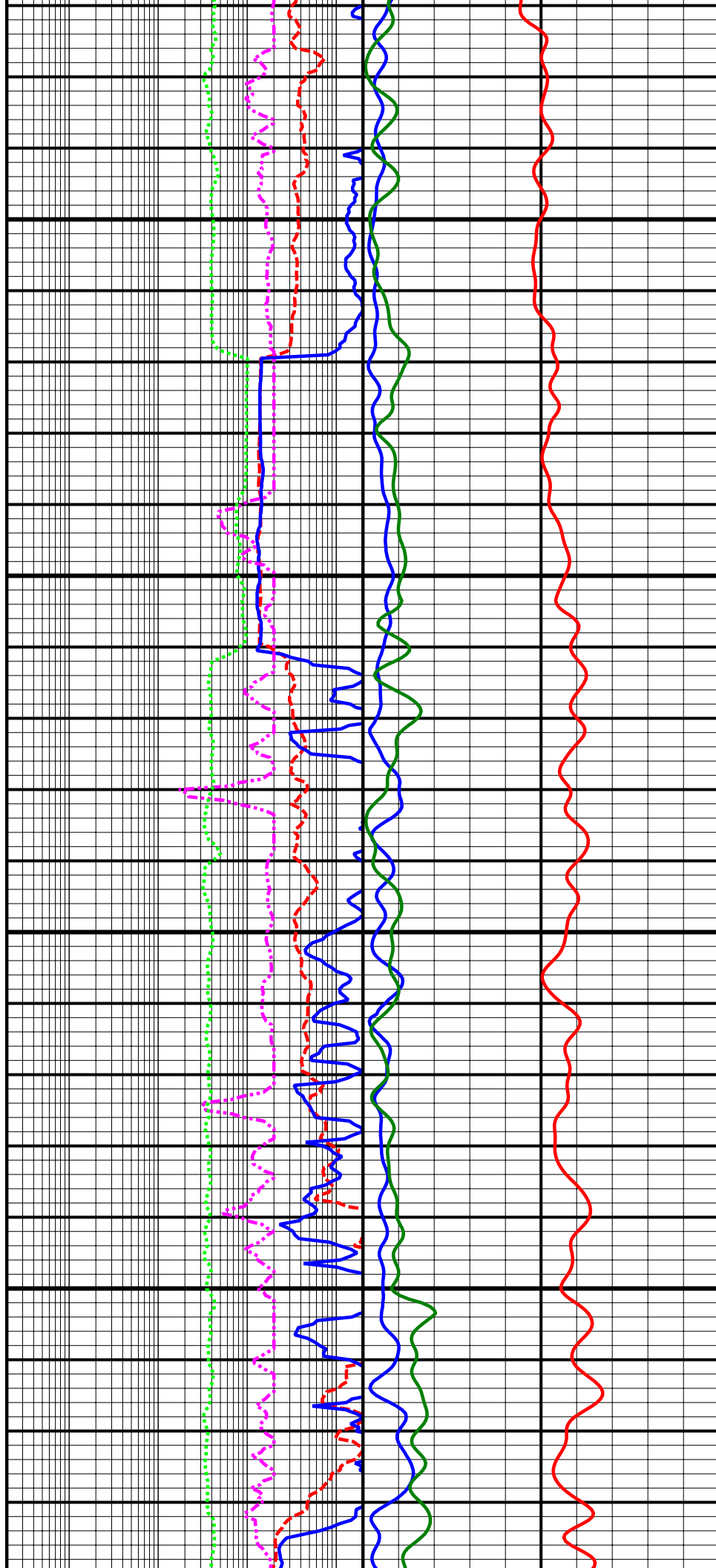
9800
MD

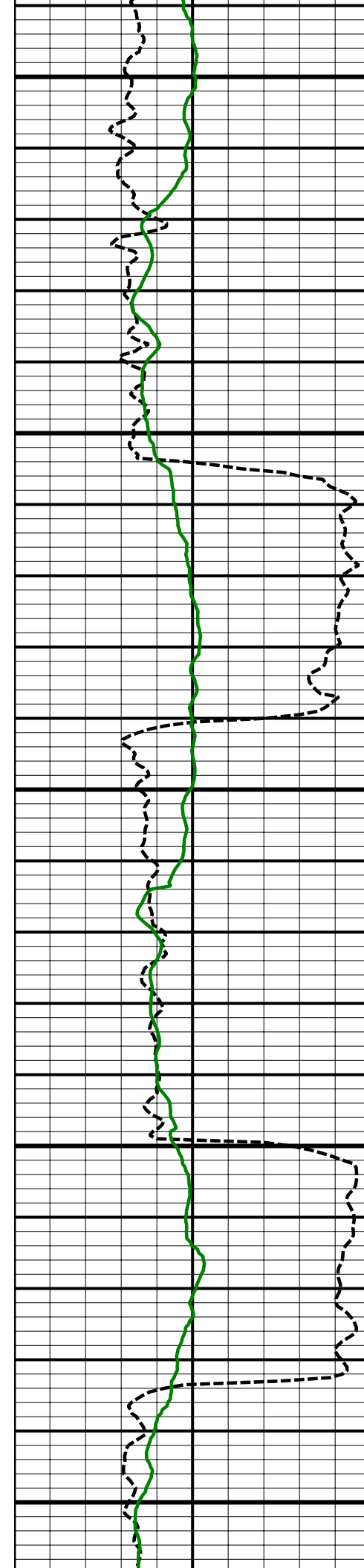




9900
MD

10000
MD

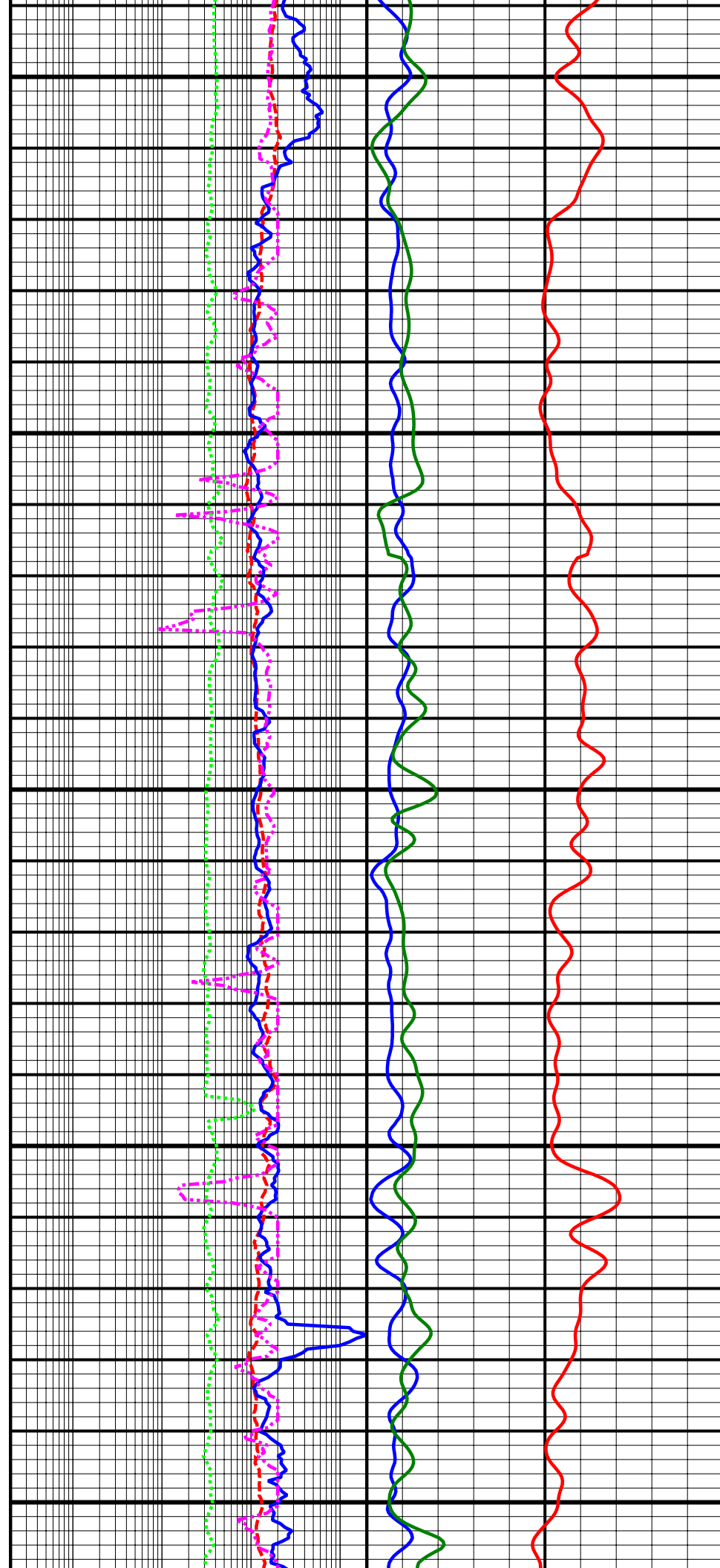


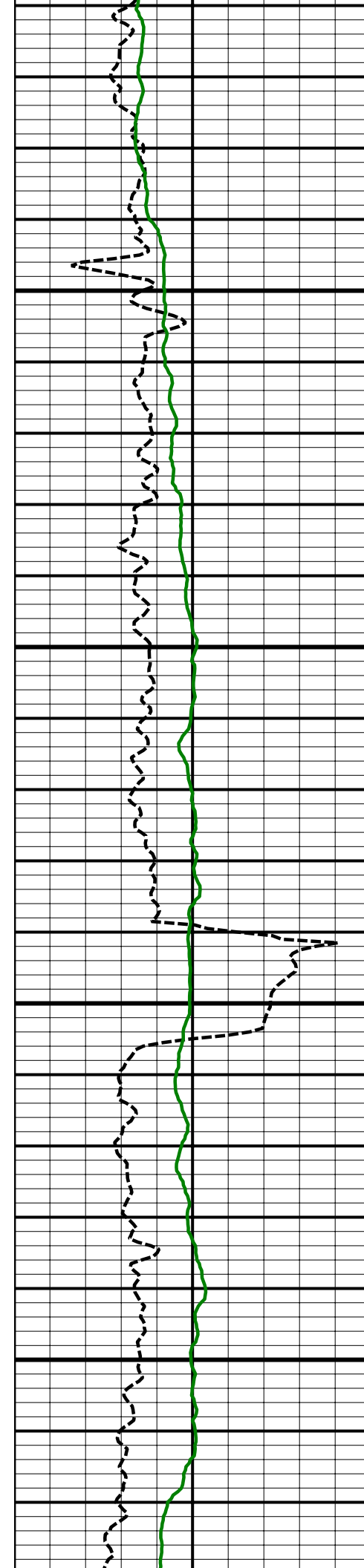


10100
MD

10200
MD

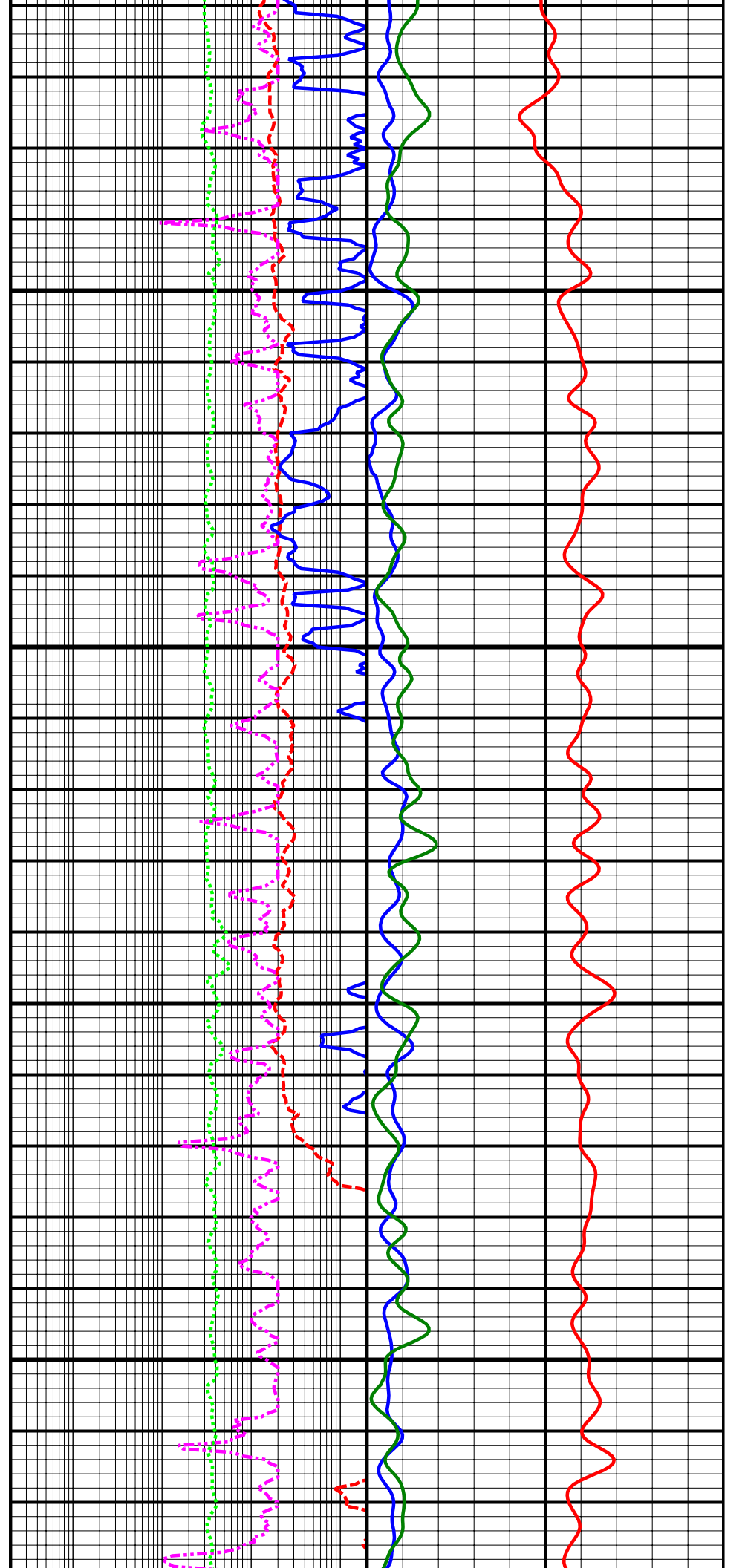
10300
MD

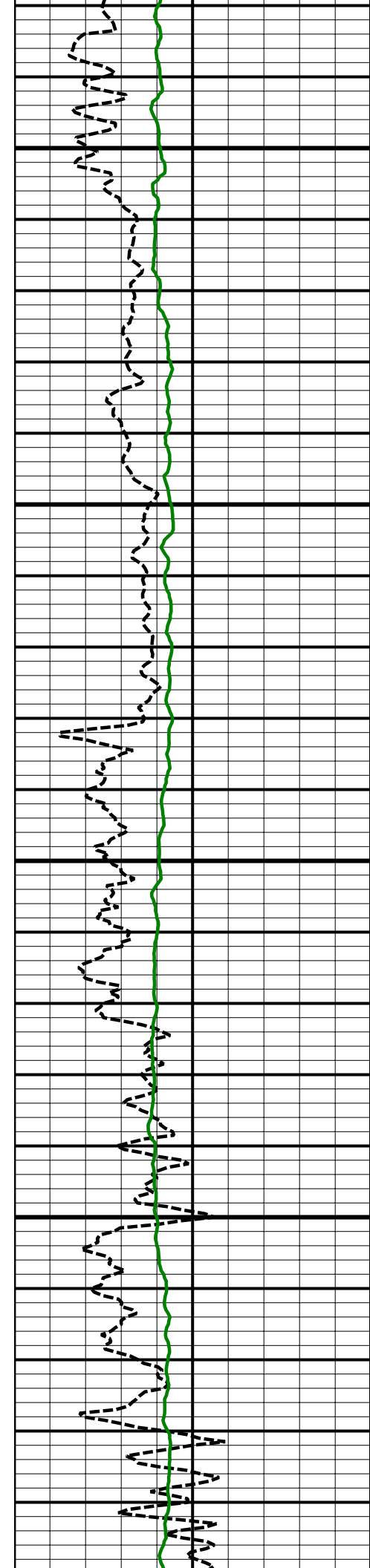




10400
MD

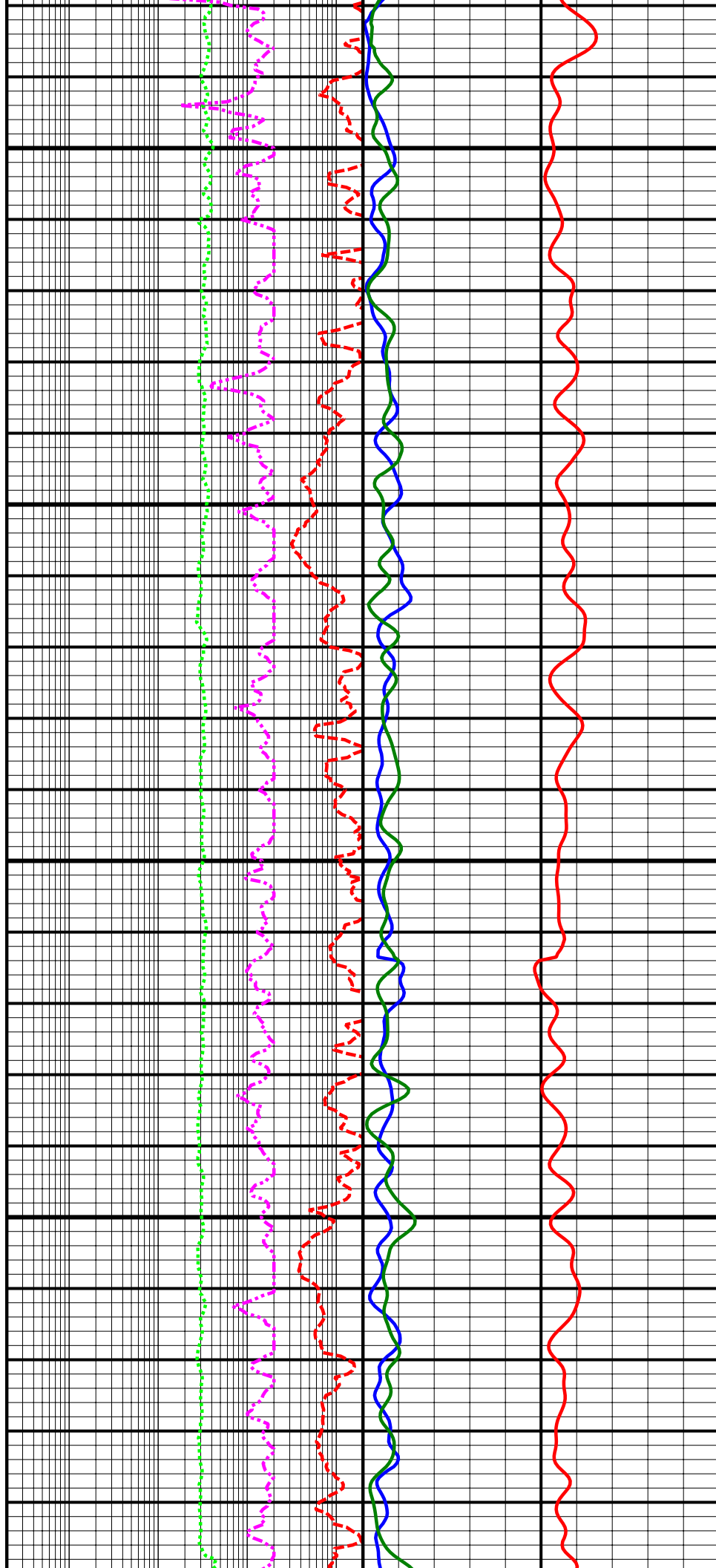
10500
MD

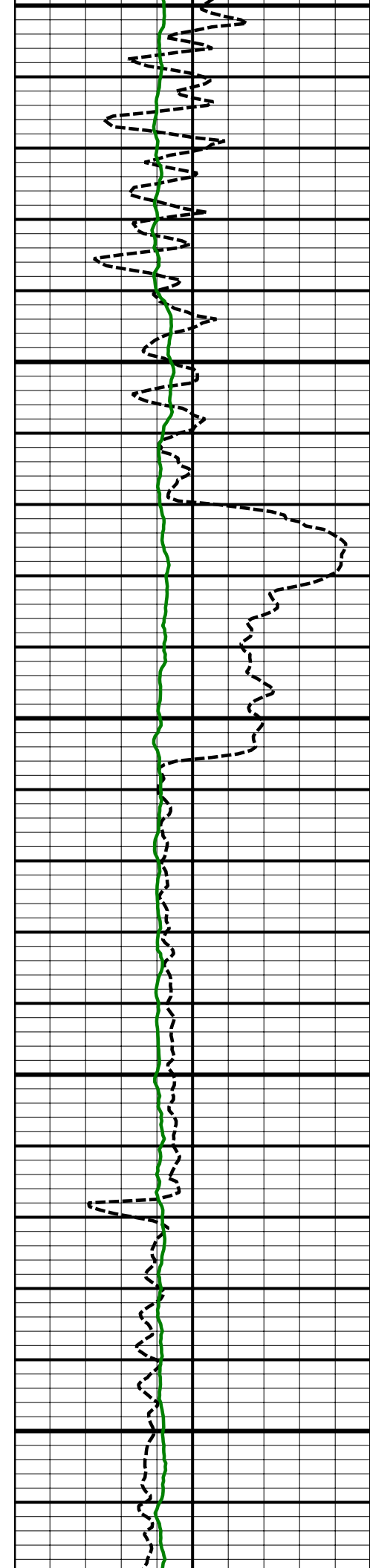




10600
MD

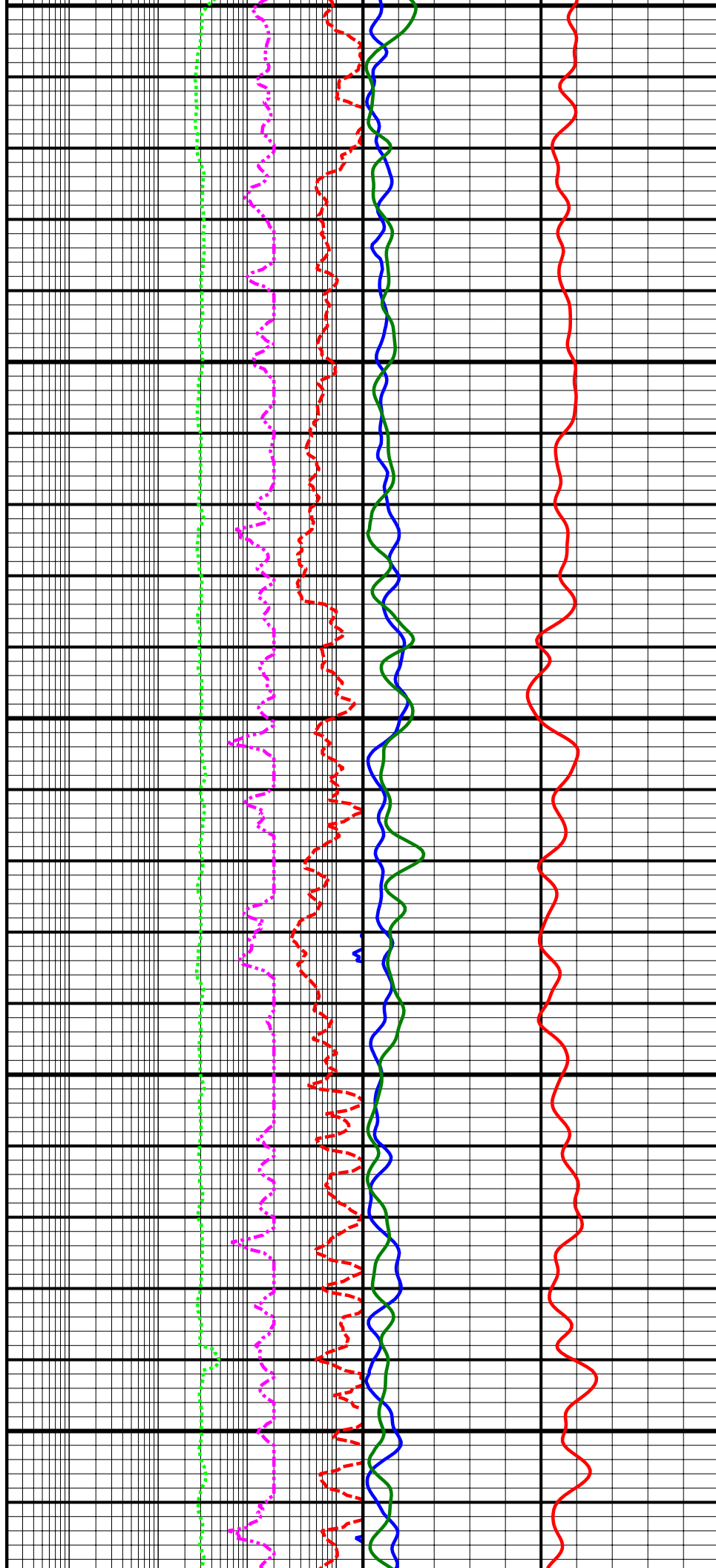
10700
MD

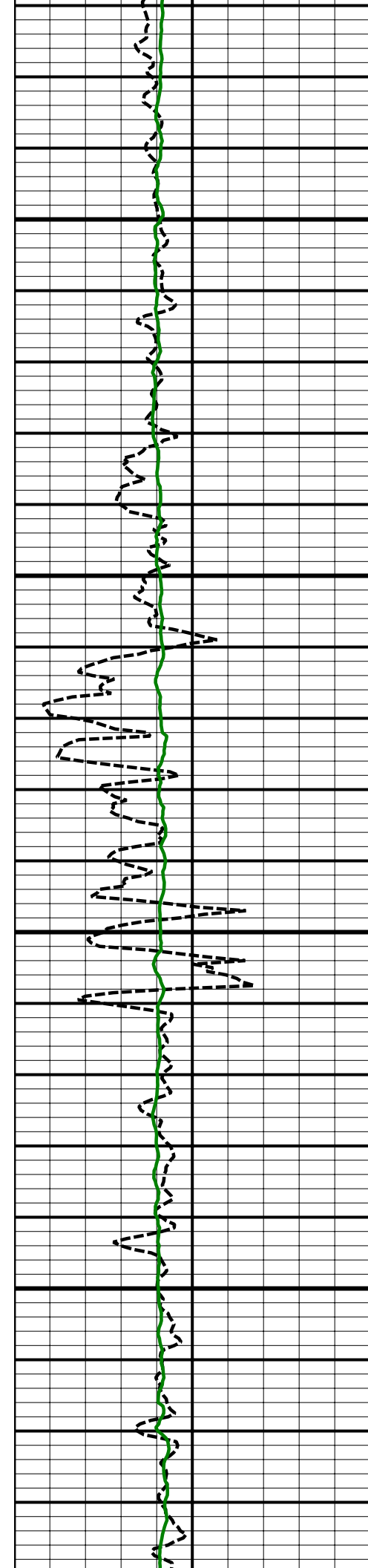




10800
MD

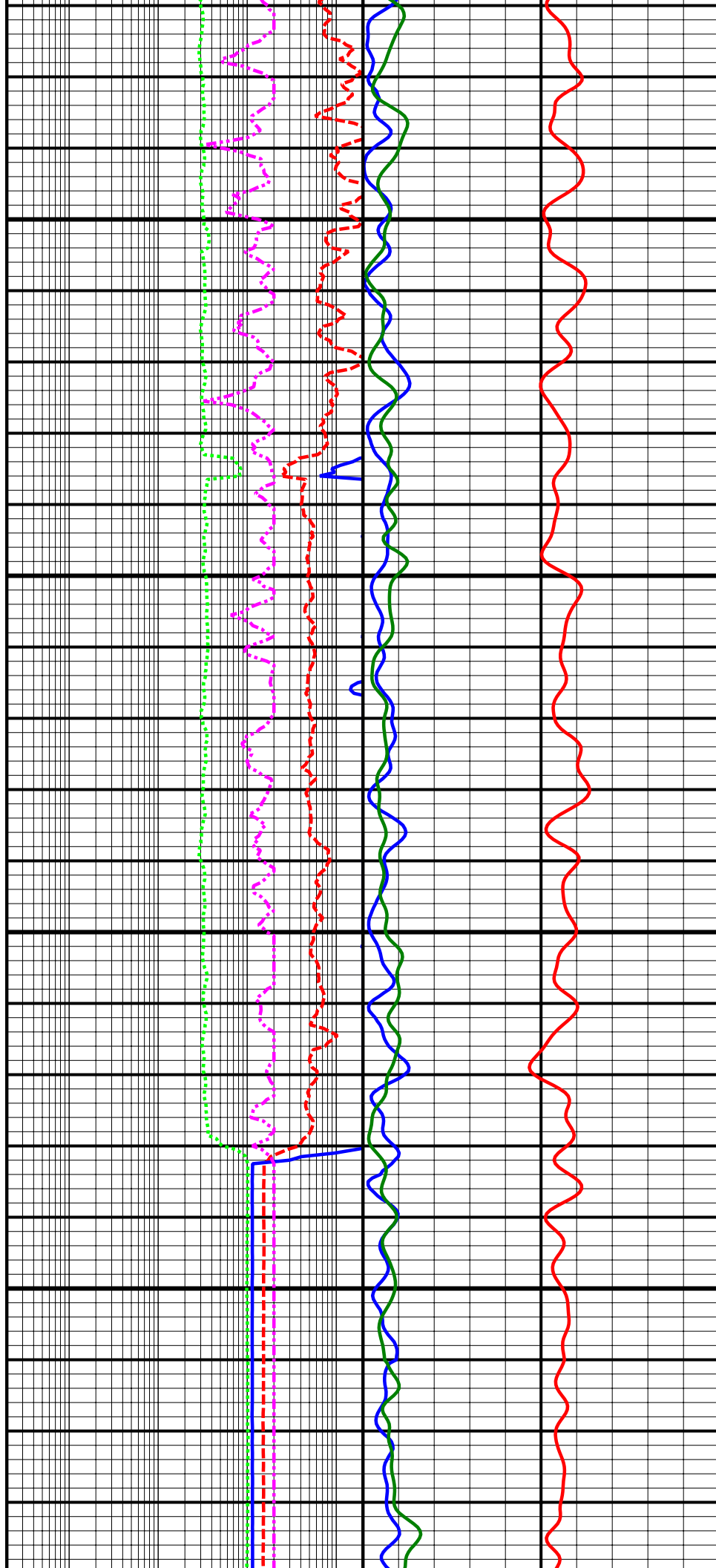
10900
MD

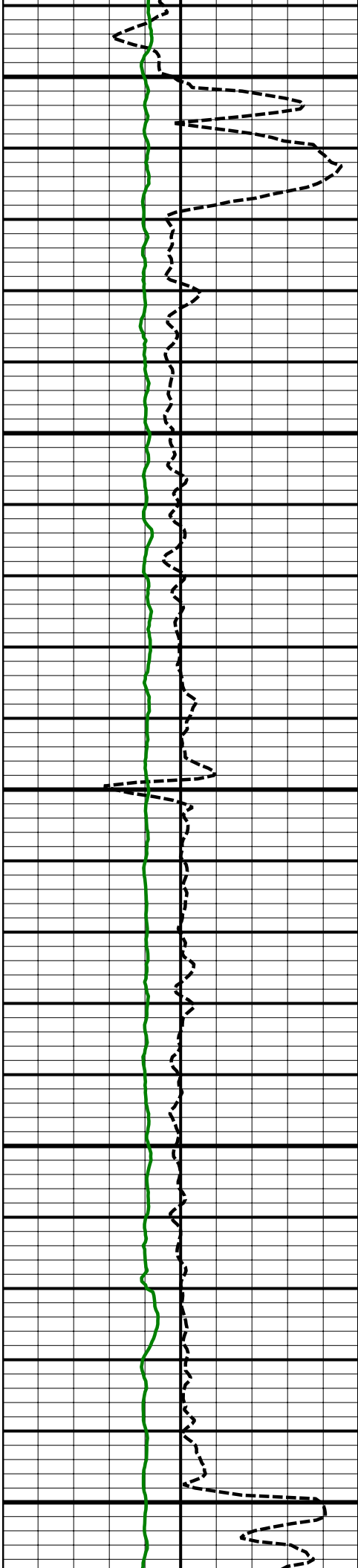




11000
MD

11100
MD

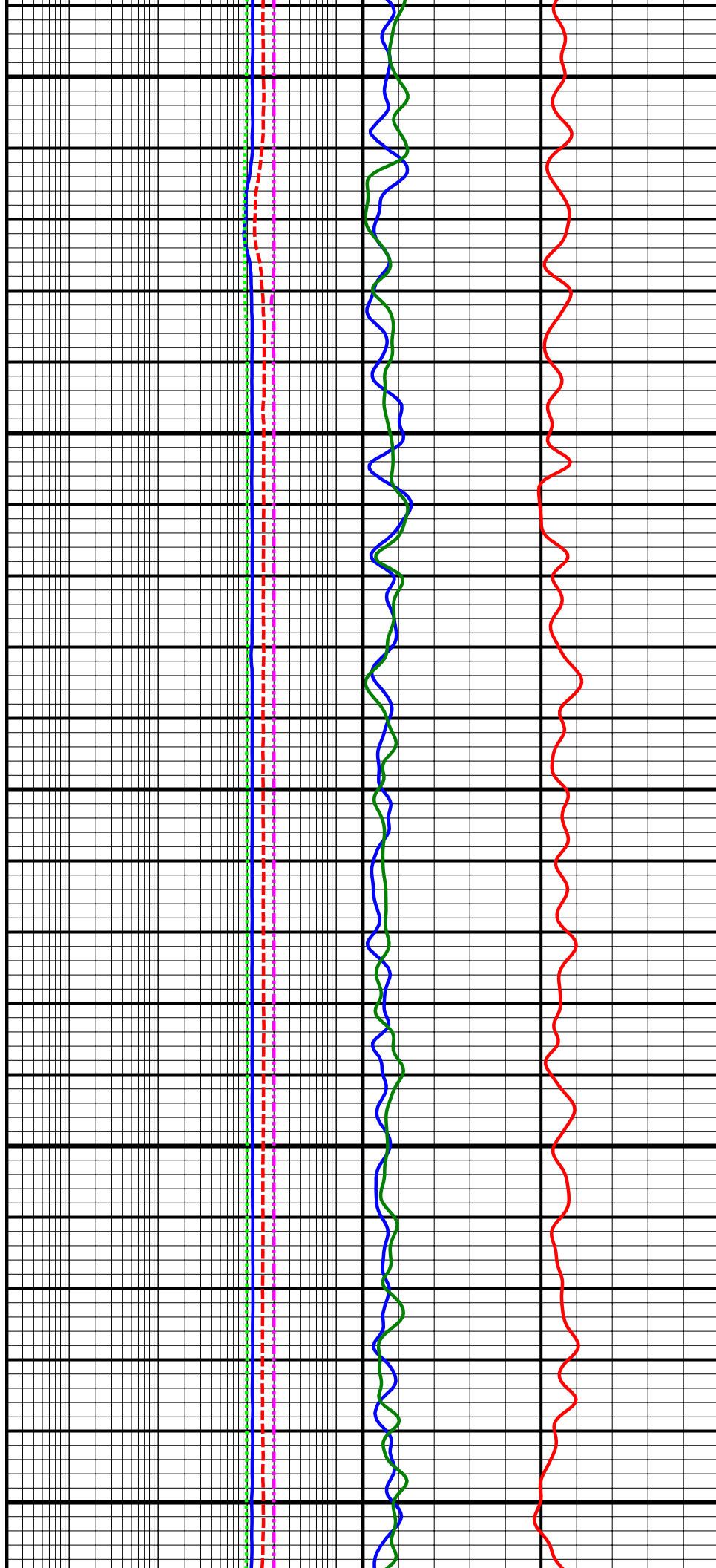


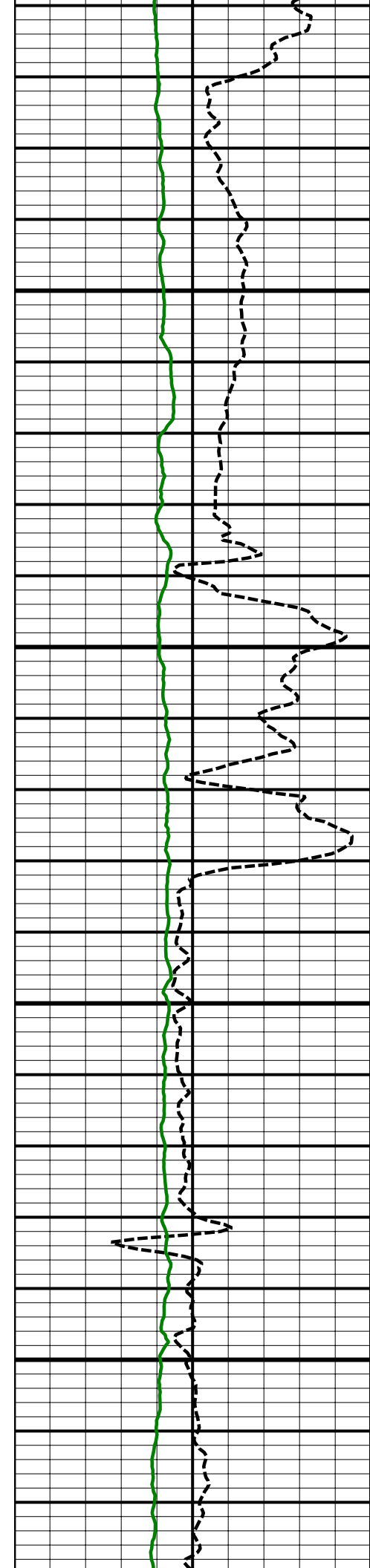


11200
MD

11300
MD

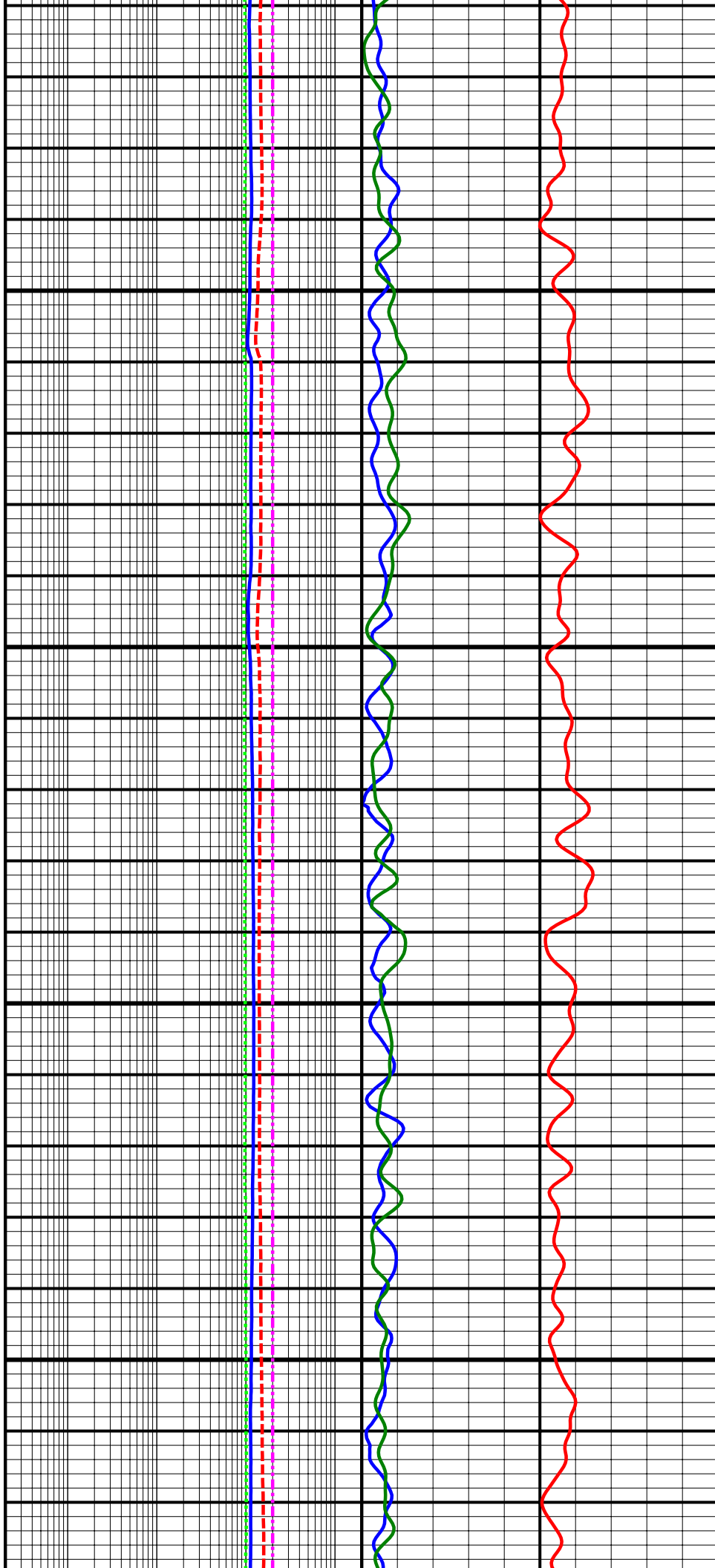
11400
MD

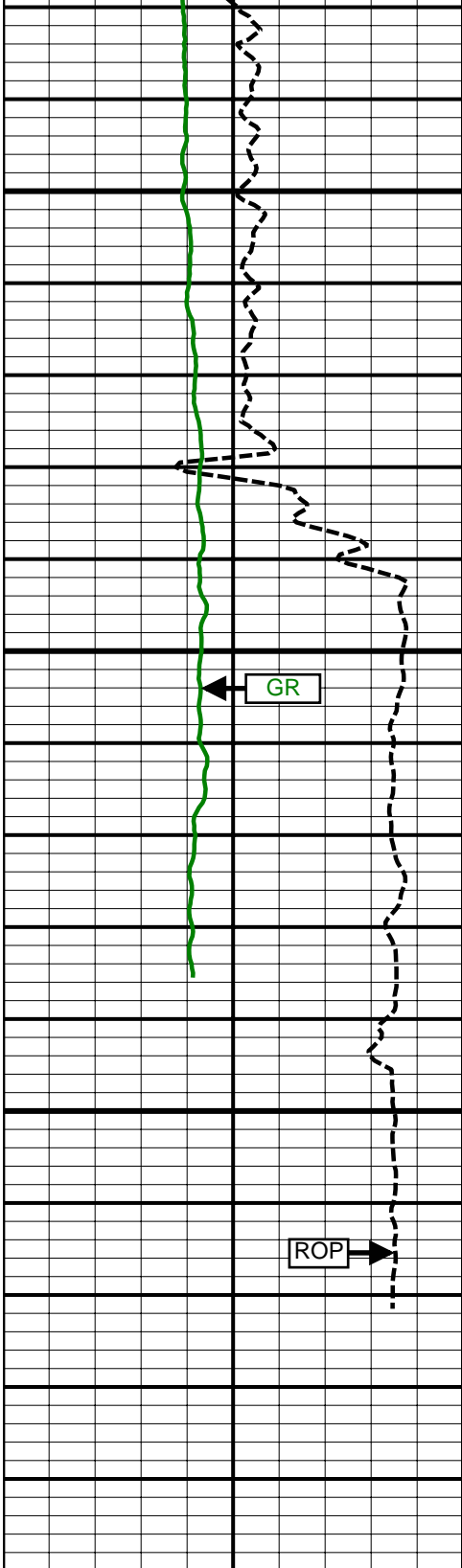




1150
MD

1160
MD

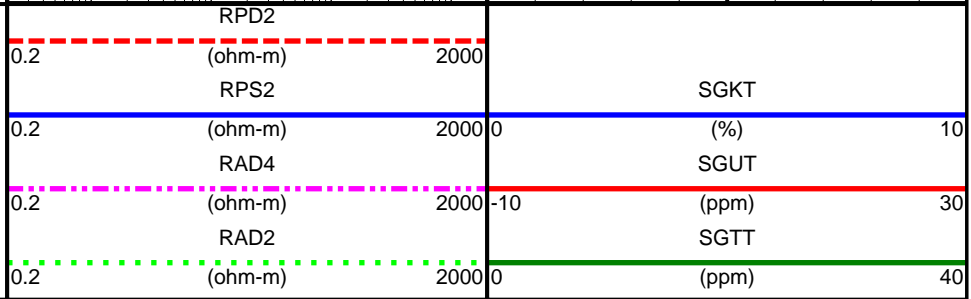
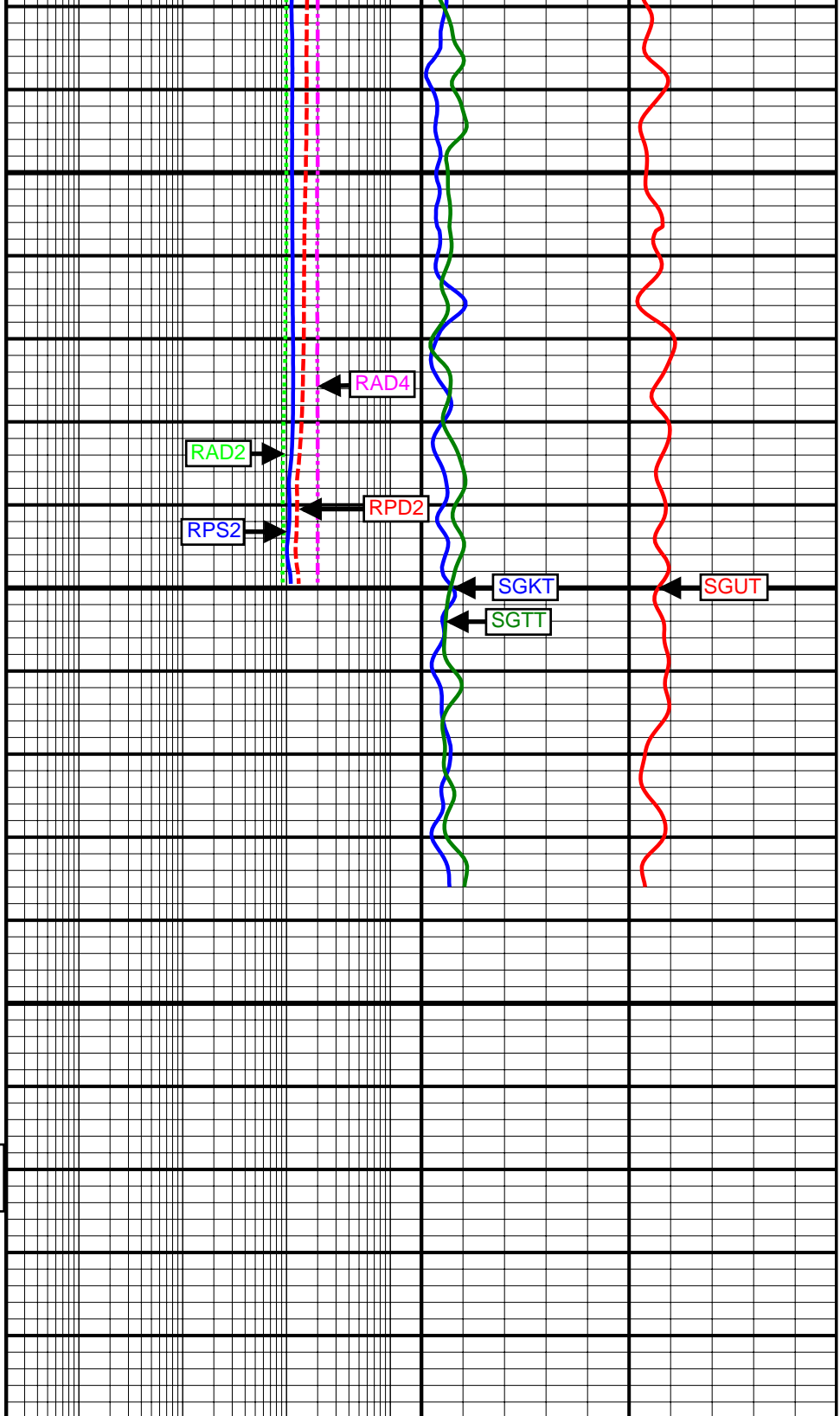
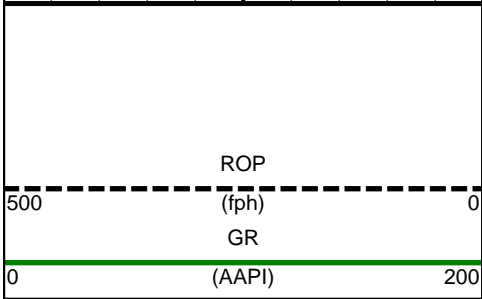




11700
MD

Comment
No. 3-2

11800



SURVEY						
Survey Calculation Method: Minimum Curvature						
Magnetic Reference	Target Direction	Total Magnetic Field	Magnetic Dip Angle	Magnetic Declination	Grid Convergence	Total Correction
True North	189.65 deg	52895 nT	66.85 deg	8.71 deg	0.00 deg	8.71 deg
Survey Tie-On	Depth	INC	AZ	TVD	NS	EW
	867.00 ft	0.32 deg	283.57 deg	866.98 ft	2.71 ft	-3.12 ft

Well Head							
Depth (ft)	Inc (deg)	Azm (deg)	TVD (ft)	NS (ft)	EW (ft)	VSect (ft)	Dogleg (deg/100ft)
959.00	0.22	333.89	958.98	2.93	-3.45	-2.31	0.27
1143.00	0.35	337.15	1142.98	3.76	-3.82	-3.07	0.07
1235.00	0.28	323.35	1234.98	4.20	-4.06	-3.46	0.11
1327.00	2.82	347.54	1326.93	6.59	-4.69	-5.71	2.79
1419.00	5.17	327.86	1418.71	12.31	-7.38	-10.90	2.92
1514.00	7.18	326.15	1513.15	20.87	-12.97	-18.40	2.12
1609.00	8.15	319.88	1607.30	30.95	-20.61	-27.06	1.35
1703.00	9.19	311.82	1700.23	41.05	-30.50	-35.36	1.70
1798.00	8.64	309.77	1794.08	50.67	-41.64	-42.98	0.67
1894.00	8.08	309.89	1889.06	59.61	-52.36	-49.99	0.58
1988.00	7.79	308.83	1982.16	67.85	-62.39	-56.43	0.35
2083.00	8.68	302.86	2076.18	75.77	-73.43	-62.39	1.30
2177.00	8.02	301.98	2169.19	83.09	-84.95	-67.68	0.72
2272.00	9.06	301.69	2263.13	90.53	-96.93	-73.00	1.10
2367.00	9.97	311.60	2356.83	99.92	-109.45	-80.16	1.97
2462.00	9.24	310.43	2450.50	110.33	-121.40	-88.42	0.80
2556.00	9.98	314.07	2543.18	120.89	-133.00	-96.88	1.02
2651.00	9.29	312.98	2636.84	131.84	-144.53	-105.75	0.75
2746.00	9.18	309.48	2730.61	141.89	-155.99	-113.73	0.60
2840.00	10.98	312.63	2823.16	152.72	-168.36	-122.34	2.00
2934.00	10.93	312.54	2915.44	164.81	-181.51	-132.05	0.06
3030.00	10.46	311.95	3009.77	176.79	-194.70	-141.65	0.50
3124.00	10.03	311.30	3102.28	187.89	-207.20	-150.50	0.47
3220.00	9.50	310.55	3196.88	198.56	-219.50	-158.96	0.57
3314.00	8.28	307.90	3289.75	207.76	-230.73	-166.15	1.37
3410.00	9.98	311.92	3384.54	217.57	-242.38	-173.86	1.89
3505.00	10.88	313.91	3477.96	229.29	-254.96	-183.30	1.02
3599.00	9.33	311.83	3570.50	240.52	-267.03	-192.36	1.69
3694.00	10.08	311.47	3664.14	251.16	-279.00	-200.84	0.79
3789.00	11.05	311.16	3757.53	262.66	-292.08	-209.98	1.02
3883.00	9.72	307.84	3849.99	273.46	-305.13	-218.44	1.55
3978.00	10.78	307.64	3943.47	283.80	-318.50	-226.40	1.12
4074.00	12.07	306.48	4037.57	295.25	-333.68	-235.14	1.36
4169.00	11.54	303.64	4130.56	306.42	-349.58	-243.49	0.83
4264.00	11.05	302.28	4223.72	316.55	-365.19	-250.85	0.59
4359.00	11.08	309.14	4316.96	327.17	-379.96	-258.85	1.39
4454.00	9.79	307.53	4410.39	337.86	-393.45	-267.12	1.39
4644.00	10.68	310.69	4597.36	359.18	-419.61	-283.75	0.55
4738.00	9.64	310.66	4689.89	369.98	-432.19	-292.30	1.11
4833.00	11.22	312.51	4783.31	381.41	-445.03	-301.41	1.70
4928.00	10.46	312.07	4876.62	393.44	-458.25	-311.05	0.80
5023.00	10.80	312.87	4969.99	405.27	-471.17	-320.55	0.39

5118.00	11.76	311.13	5063.15	417.69	-484.99	-330.48	1.07
5213.00	10.46	309.90	5156.37	429.59	-498.90	-339.88	1.39
5309.00	11.89	310.85	5250.55	441.65	-513.06	-349.40	1.50
5404.00	10.19	309.13	5343.79	453.36	-526.99	-358.60	1.82
5498.00	10.14	307.94	5436.31	463.69	-539.96	-366.62	0.23
5593.00	11.59	305.25	5529.61	474.34	-554.35	-374.70	1.62
5688.00	9.70	302.95	5622.97	484.20	-568.86	-381.99	2.04
5783.00	10.57	305.36	5716.48	493.60	-582.69	-388.94	1.02
5878.00	11.75	309.85	5809.69	504.84	-597.22	-397.59	1.54
5973.00	11.78	310.11	5902.69	517.29	-612.06	-407.37	0.06
6070.00	9.82	305.45	5997.97	528.46	-626.37	-415.99	2.21
6165.00	11.95	302.69	6091.26	538.48	-641.25	-423.36	2.31
6260.00	11.81	291.26	6184.24	547.31	-658.59	-429.17	2.48
6355.00	11.67	296.45	6277.25	555.12	-676.26	-433.90	1.12
6450.00	13.03	309.79	6370.07	566.26	-693.09	-442.06	3.32
6545.00	12.82	309.83	6462.66	579.86	-709.41	-452.74	0.22
6640.00	11.98	274.48	6555.58	587.39	-727.36	-457.15	7.91
6672.00	14.93	257.40	6586.71	586.75	-734.70	-455.29	15.37
6704.00	17.36	250.42	6617.45	584.25	-743.22	-451.40	9.71
6735.00	18.09	244.77	6646.98	580.65	-751.94	-446.39	6.02
6767.00	18.06	233.92	6677.41	575.61	-760.44	-439.99	10.51
6799.00	19.60	222.60	6707.70	568.74	-768.09	-431.93	12.37
6830.00	22.39	213.91	6736.65	560.00	-774.90	-422.18	13.46
6862.00	24.64	208.64	6765.99	549.09	-781.50	-410.32	9.62
6893.00	26.97	206.00	6793.90	537.10	-787.68	-397.46	8.38
6925.00	29.26	203.40	6822.12	523.40	-793.97	-382.90	8.11
6956.00	31.81	200.50	6848.82	508.79	-799.84	-367.51	9.50
6988.00	33.74	195.17	6875.73	492.31	-805.12	-350.38	10.84
7020.00	33.75	192.44	6902.34	475.05	-809.36	-332.65	4.74
7051.00	33.22	191.17	6928.20	458.31	-812.86	-315.56	2.83
7083.00	32.43	190.31	6955.09	441.27	-816.10	-298.22	2.87
7115.00	32.03	188.87	6982.16	424.44	-818.94	-281.15	2.71
7146.00	34.96	187.75	7008.01	407.51	-821.41	-264.05	9.66
7178.00	39.13	186.18	7033.55	388.38	-823.73	-244.80	13.36
7209.00	43.99	184.63	7056.73	367.91	-825.65	-224.30	16.02
7241.00	48.03	184.80	7078.96	344.97	-827.55	-201.37	12.63
7273.00	49.38	182.16	7100.07	320.98	-829.00	-177.47	7.50
7304.00	53.00	178.84	7119.50	296.83	-829.19	-153.64	14.35
7336.00	56.74	176.74	7137.92	270.69	-828.17	-128.03	12.86
7367.00	58.95	175.25	7154.41	244.51	-826.34	-102.53	8.21
7399.00	60.78	175.04	7170.48	216.94	-823.99	-75.74	5.75
7431.00	64.27	176.02	7185.24	188.64	-821.79	-48.21	11.24
7462.00	67.34	176.10	7197.94	160.43	-819.84	-20.73	9.91
7494.00	68.69	175.53	7209.92	130.84	-817.68	8.08	4.53
7526.00	71.44	175.65	7220.83	100.85	-815.36	37.26	8.60
7557.00	74.13	177.95	7230.01	71.29	-813.72	66.12	11.20
7589.00	79.01	179.06	7237.44	40.18	-812.91	96.65	15.62
7732.00	90.12	179.69	7250.96	-101.94	-811.36	236.51	7.78
7827.00	92.73	177.25	7248.60	-196.86	-808.83	329.66	3.76
7922.00	90.43	177.38	7245.98	-291.72	-804.38	422.43	2.42
8017.00	89.91	177.78	7245.70	-386.63	-800.37	515.33	0.69
8112.00	91.48	178.33	7244.55	-481.57	-797.15	608.38	1.75
8206.00	91.67	177.34	7241.96	-575.46	-793.60	700.35	1.07
8301.00	90.31	174.89	7240.32	-670.22	-787.16	792.69	2.95
8396.00	91.67	173.90	7238.68	-764.75	-777.88	884.32	1.77
8491.00	90.71	173.20	7236.71	-859.13	-767.21	975.58	1.25
8586.00	90.80	175.12	7235.45	-953.62	-757.55	1067.11	2.02
8680.00	90.68	178.17	7234.24	-1047.44	-752.05	1158.68	3.25
8775.00	91.23	180.42	7232.66	-1142.41	-750.88	1252.12	2.44
8870.00	91.91	181.70	7230.05	-1237.36	-752.64	1346.01	1.53
8965.00	91.48	185.66	7227.24	-1332.10	-758.73	1440.44	4.19

9060.00	91.91	185.34	7224.43	-1426.62	-767.83	1535.15	0.56
9154.00	90.99	184.54	7222.05	-1520.24	-775.92	1628.80	1.30
9249.00	91.48	184.05	7220.01	-1614.95	-783.04	1723.36	0.73
9344.00	88.89	184.35	7219.70	-1709.69	-789.99	1817.92	2.74
9438.00	89.14	184.14	7221.31	-1803.42	-796.95	1911.49	0.35
9533.00	89.65	184.13	7222.32	-1898.16	-803.80	2006.05	0.54
9628.00	90.25	183.64	7222.40	-1992.95	-810.24	2100.57	0.82
9723.00	88.03	183.40	7223.83	-2087.75	-816.07	2195.01	2.35
9818.00	86.61	182.88	7228.27	-2182.50	-821.27	2289.29	1.59
9914.00	87.16	180.66	7233.49	-2278.31	-824.23	2384.23	2.38
10009.00	88.27	178.52	7237.27	-2373.22	-823.55	2477.69	2.54
10104.00	87.72	176.13	7240.60	-2468.05	-819.12	2570.44	2.58
10200.00	88.46	174.08	7243.80	-2563.64	-810.93	2663.30	2.27
10294.00	90.88	171.43	7244.34	-2656.88	-799.08	2753.23	3.82
10389.00	90.35	171.08	7243.32	-2750.77	-784.64	2843.37	0.67
10484.00	91.29	171.80	7241.96	-2844.70	-770.50	2933.60	1.25
10580.00	91.23	171.96	7239.85	-2939.71	-756.94	3025.00	0.18
10675.00	91.11	172.27	7237.91	-3033.79	-743.91	3115.57	0.35
10770.00	91.06	172.31	7236.11	-3127.92	-731.17	3206.22	0.07
10866.00	90.99	175.76	7234.39	-3223.37	-721.19	3298.65	3.59
10961.00	90.88	176.90	7232.84	-3318.16	-715.11	3391.08	1.21
11057.00	90.79	178.66	7231.44	-3414.07	-711.40	3485.01	1.84
11152.00	90.80	180.23	7230.13	-3509.06	-710.48	3578.50	1.65
11248.00	90.86	180.38	7228.73	-3605.04	-710.99	3673.22	0.17
11343.00	90.55	181.86	7227.57	-3700.02	-712.84	3767.16	1.59
11437.00	90.43	181.21	7226.76	-3793.98	-715.36	3860.21	0.70
11532.00	90.53	178.48	7225.97	-3888.97	-715.10	3953.81	2.88
11627.00	90.00	178.93	7225.53	-3983.94	-712.96	4047.08	0.73
11720.00	89.69	179.29	7225.78	-4076.93	-711.51	4138.51	0.51

Weatherford Surveys from 959.00 ft MD to 11720.00 ft MD.

TD at 11770.00 ft MD.

The total correction is 8.71 deg relative to True North.



Weatherford®

Final Print

COMPANY	<u>Anadarko Petroleum Corp.</u>		
WELL	<u>Camp 15N-26HZ</u>		
FIELD	<u>Camp</u>		
RIG	<u>H&P 307</u>		
LOC.	<u>Colorado</u>	COUNTY	<u>Weld</u>