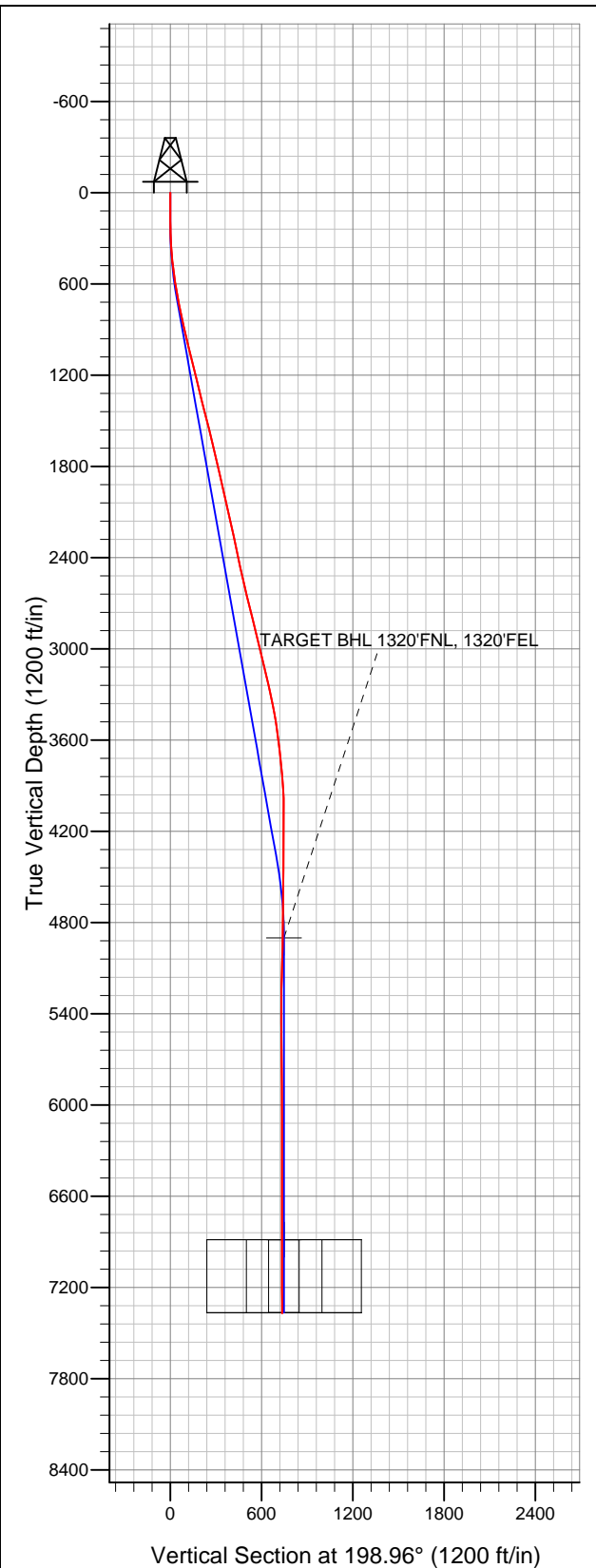


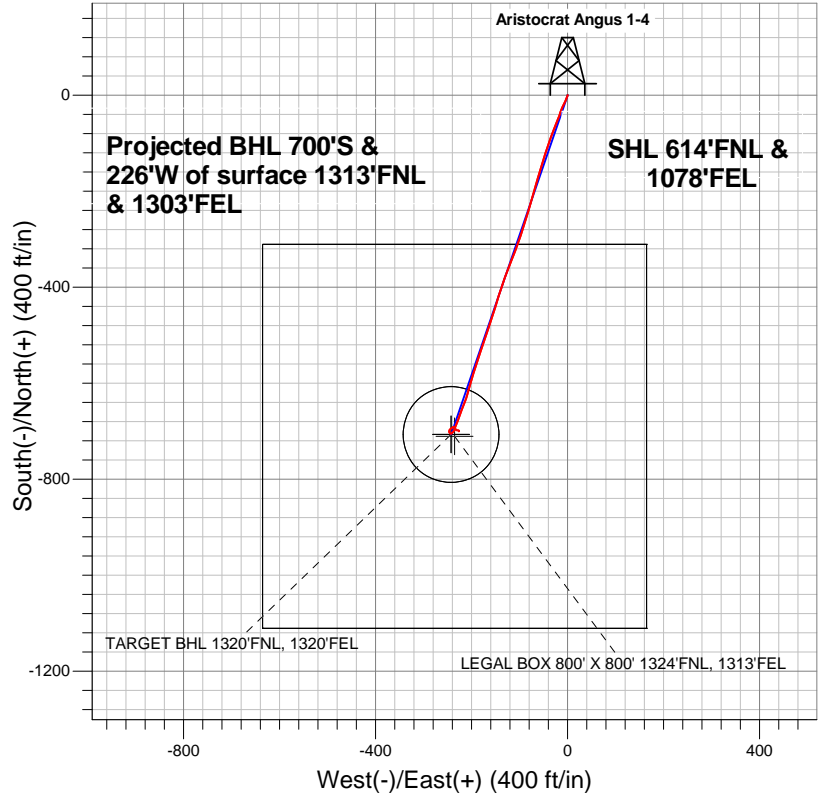
Well Name: Aristocrat Angus 1-4

Surface Location: Aristocrat Angus 1-4 Pad Sec.4-T3N-R65W
North American Datum 1983 US State Plane 1983Colorado Northern Zone
Ground Elevation: 4815.0

+N/-S	+E/-W	Northing	Easting	Latitude	Longitude	Slot
0.0	0.0	1338640.89	3233672.23	40.259940	-104.662710	
Original Well Elev		WELL @ 4827.0ft (Original Well Elev)				



EnCana Oil & Gas Weld County CO



LEGEND

- Wellbore #1
- Aristocrat Angus 1-4, Wellbore #1, Plan #3 (7-31-12) V0
- Survey #1

Final Survey Plot

Projected Final Survey -
7450'MD & 7370'TVD @ 736°VS
0.20 deg Inc 195.30 deg AZ

Project: SEC.4-T3N-R65W
Site: Aristocrat Angus 1-4 Pad Sec.4-T3N-R65W
Well: Aristocrat Angus 1-4
Plan: Wellbore #1



EnCana Oil & Gas Weld County CO

SEC.4-T3N-R65W

Aristocrat Angus 1-4 Pad Sec.4-T3N-R65W

Aristocrat Angus 1-4

Wellbore #1

Survey: Survey #1

Standard Survey Report

08 August, 2012

Company:	EnCana Oil & Gas Weld County CO	Local Co-ordinate Reference:	Well Aristocrat Angus 1-4
Project:	SEC.4-T3N-R65W	TVD Reference:	WELL @ 4827.0ft (Original Well Elev)
Site:	Aristocrat Angus 1-4 Pad Sec.4-T3N-R65W	MD Reference:	WELL @ 4827.0ft (Original Well Elev)
Well:	Aristocrat Angus 1-4	North Reference:	True
Wellbore:	Wellbore #1	Survey Calculation Method:	Minimum Curvature
Design:	Wellbore #1	Database:	Landmark

Project	SEC.4-T3N-R65W, Weld County, Colorado		
Map System:	US State Plane 1983	System Datum:	Mean Sea Level
Geo Datum:	North American Datum 1983		Using Well Reference Point
Map Zone:	Colorado Northern Zone		Using geodetic scale factor

Site	Aristocrat Angus 1-4 Pad Sec.4-T3N-R65W				
Site Position:		Northing:	1,338,640.90ft	Latitude:	40.259940
From:	Lat/Long	Easting:	3,233,672.23ft	Longitude:	-104.662710
Position Uncertainty:	0.0 ft	Slot Radius:	"	Grid Convergence:	0.54 °

Well	Aristocrat Angus 1-4					
Well Position	+N-S	0.0 ft	Northing:	1,338,640.89 ft	Latitude:	40.259940
	+E-W	0.0 ft	Easting:	3,233,672.23 ft	Longitude:	-104.662710
Position Uncertainty		0.0 ft	Wellhead Elevation:	ft	Ground Level:	4,815.0 ft

Wellbore	Wellbore #1				
Magnetics	Model Name	Sample Date	Declination (°)	Dip Angle (°)	Field Strength (nT)
	IGRF2010	7/31/2012	8.65	66.92	52,950

Design	Wellbore #1			
Audit Notes:				
Version:	1.0	Phase:	ACTUAL	Tie On Depth: 0.0
Vertical Section:	Depth From (TVD) (ft)	+N/-S (ft)	+E/-W (ft)	Direction (°)
	0.0	0.0	0.0	198.96

Survey Program		Date	8/7/2012		
From (ft)	To (ft)	Survey (Wellbore)	Tool Name	Description	
93.0	7,450.0	Survey #1 (Wellbore #1)	MWD	MWD - Standard	

Survey	Wellbore Data									
	Measured Depth (ft)	Inclination (°)	Azimuth (°)	Vertical Depth (ft)	+N/-S (ft)	+E/-W (ft)	Vertical Section (ft)	Dogleg Rate (°/100ft)	Build Rate (°/100ft)	Turn Rate (°/100ft)
Main Wellbore	0.0	0.00	0.00	0.0	0.0	0.0	0.0	0.00	0.00	0.00
	93.0	0.20	191.50	93.0	-0.2	0.0	0.2	0.22	0.22	0.00
	184.0	0.50	190.80	184.0	-0.7	-0.1	0.7	0.33	0.33	-0.77
	276.0	1.90	196.60	276.0	-2.6	-0.6	2.6	1.53	1.52	6.30
	367.0	3.90	202.20	366.9	-6.9	-2.2	7.2	2.22	2.20	6.15
	458.0	5.60	209.00	457.5	-13.6	-5.6	14.7	1.96	1.87	7.47
	550.0	8.10	202.90	548.9	-23.5	-10.3	25.6	2.83	2.72	-6.63
	673.0	10.50	199.50	670.3	-42.1	-17.4	45.4	2.00	1.95	-2.76
	736.0	11.20	201.50	732.1	-53.2	-21.5	57.3	1.26	1.11	3.17
	830.0	13.00	201.00	824.0	-71.5	-28.7	77.0	1.92	1.91	-0.53
	924.0	13.10	200.40	915.6	-91.4	-36.2	98.2	0.18	0.11	-0.64
	1,017.0	13.20	199.50	1,006.2	-111.3	-43.4	119.3	0.25	0.11	-0.97
	1,111.0	13.50	195.90	1,097.6	-132.0	-50.0	141.0	0.94	0.32	-3.83

Company:	EnCana Oil & Gas Weld County CO	Local Co-ordinate Reference:	Well Aristocrat Angus 1-4
Project:	SEC.4-T3N-R65W	TVD Reference:	WELL @ 4827.0ft (Original Well Elev)
Site:	Aristocrat Angus 1-4 Pad Sec.4-T3N-R65W	MD Reference:	WELL @ 4827.0ft (Original Well Elev)
Well:	Aristocrat Angus 1-4	North Reference:	True
Wellbore:	Wellbore #1	Survey Calculation Method:	Minimum Curvature
Design:	Wellbore #1	Database:	Landmark

Survey										
Measured Depth (ft)	Inclination (°)	Azimuth (°)	Vertical Depth (ft)	+N/-S (ft)	+E/-W (ft)	Vertical Section (ft)	Dogleg Rate (°/100ft)	Build Rate (°/100ft)	Turn Rate (°/100ft)	
1,204.0	13.50	196.40	1,188.1	-152.8	-56.0	162.7	0.13	0.00	0.54	
1,298.0	14.20	195.70	1,279.3	-174.4	-62.2	185.2	0.77	0.74	-0.74	
1,392.0	14.30	196.40	1,370.4	-196.7	-68.6	208.3	0.21	0.11	0.74	
1,485.0	14.20	196.20	1,460.6	-218.6	-75.1	231.2	0.12	-0.11	-0.22	
1,579.0	14.00	196.60	1,551.7	-240.6	-81.5	254.0	0.24	-0.21	0.43	
1,673.0	13.10	197.30	1,643.1	-261.7	-87.9	276.1	0.97	-0.96	0.74	
1,766.0	13.50	198.30	1,733.6	-282.0	-94.5	297.4	0.50	0.43	1.08	
1,860.0	13.10	199.00	1,825.1	-302.5	-101.4	319.1	0.46	-0.43	0.74	
1,954.0	12.80	200.80	1,916.7	-322.3	-108.6	340.1	0.53	-0.32	1.91	
2,047.0	13.10	201.00	2,007.4	-341.8	-116.0	361.0	0.33	0.32	0.22	
2,141.0	12.20	202.00	2,099.1	-361.0	-123.5	381.5	0.99	-0.96	1.06	
2,235.0	12.80	199.50	2,190.8	-380.0	-130.7	401.9	0.86	0.64	-2.66	
2,328.0	12.20	198.80	2,281.6	-399.0	-137.3	422.0	0.67	-0.65	-0.75	
2,422.0	11.90	197.60	2,373.6	-417.6	-143.5	441.6	0.42	-0.32	-1.28	
2,516.0	12.60	196.40	2,465.4	-436.7	-149.3	461.5	0.79	0.74	-1.28	
2,609.0	12.70	198.30	2,556.2	-456.2	-155.4	481.9	0.46	0.11	2.04	
2,703.0	13.40	199.00	2,647.7	-476.3	-162.2	503.1	0.76	0.74	0.74	
2,797.0	13.90	198.10	2,739.1	-497.3	-169.2	525.3	0.58	0.53	-0.96	
2,890.0	13.90	198.00	2,829.4	-518.5	-176.1	547.6	0.03	0.00	-0.11	
2,984.0	14.20	199.40	2,920.5	-540.1	-183.5	570.5	0.48	0.32	1.49	
3,078.0	12.60	196.20	3,012.0	-560.9	-190.2	592.2	1.88	-1.70	-3.40	
3,171.0	14.40	198.70	3,102.4	-581.6	-196.7	613.9	2.03	1.94	2.69	
3,265.0	13.50	195.00	3,193.6	-603.2	-203.3	636.6	1.35	-0.96	-3.94	
3,359.0	11.80	196.00	3,285.4	-623.1	-208.8	657.1	1.82	-1.81	1.06	
3,452.0	11.00	201.80	3,376.5	-640.5	-214.7	675.5	1.50	-0.86	6.24	
3,546.0	9.50	201.10	3,469.0	-656.0	-220.8	692.2	1.60	-1.60	-0.74	
3,640.0	7.60	200.40	3,562.0	-669.1	-225.8	706.1	2.02	-2.02	-0.74	
3,733.0	6.40	200.30	3,654.3	-679.7	-229.7	717.5	1.29	-1.29	-0.11	
3,827.0	5.80	199.20	3,747.7	-689.1	-233.1	727.5	0.65	-0.64	-1.17	
3,921.0	5.10	205.30	3,841.3	-697.4	-236.4	736.4	0.97	-0.74	6.49	
4,014.0	3.70	225.20	3,934.1	-703.2	-240.3	743.2	2.21	-1.51	21.40	
4,108.0	1.00	288.70	4,028.0	-705.1	-243.3	745.9	3.59	-2.87	67.55	
4,202.0	1.00	303.30	4,122.0	-704.4	-244.7	745.7	0.27	0.00	15.53	
4,295.0	0.40	351.60	4,215.0	-703.6	-245.5	745.2	0.85	-0.65	51.94	
4,389.0	0.50	328.20	4,308.9	-702.9	-245.7	744.6	0.22	0.11	-24.89	
4,483.0	0.60	324.40	4,402.9	-702.2	-246.2	744.1	0.11	0.11	-4.04	
4,576.0	0.60	347.00	4,495.9	-701.3	-246.6	743.4	0.25	0.00	24.30	
4,670.0	0.70	357.40	4,589.9	-700.3	-246.7	742.5	0.16	0.11	11.06	
4,764.0	0.50	31.70	4,683.9	-699.4	-246.6	741.5	0.43	-0.21	36.49	
4,857.0	0.50	0.20	4,776.9	-698.6	-246.3	740.7	0.29	0.00	-33.87	
4,951.0	1.00	24.80	4,870.9	-697.4	-246.0	739.5	0.62	0.53	26.17	
4,980.0	1.11	32.88	4,899.9	-697.0	-245.7	739.0	0.63	0.36	27.89	
TARGET BHL 1320'FNL, 1320'FEL										
5,045.0	1.40	45.90	4,964.9	-695.9	-244.8	737.7	0.63	0.45	20.02	
5,138.0	1.80	48.70	5,057.9	-694.1	-242.9	735.4	0.44	0.43	3.01	
5,232.0	1.70	58.70	5,151.8	-692.4	-240.6	733.1	0.34	-0.11	10.64	
5,326.0	0.90	64.00	5,245.8	-691.4	-238.8	731.5	0.86	-0.85	5.64	
5,419.0	0.50	101.30	5,338.8	-691.2	-237.7	730.9	0.63	-0.43	40.11	
5,513.0	0.50	104.10	5,432.8	-691.3	-236.9	730.8	0.03	0.00	2.98	
5,606.0	0.60	127.00	5,525.8	-691.7	-236.1	730.9	0.26	0.11	24.62	
5,700.0	0.70	139.80	5,619.8	-692.5	-235.4	731.4	0.19	0.11	13.62	
5,794.0	0.80	147.30	5,713.8	-693.5	-234.6	732.1	0.15	0.11	7.98	
5,887.0	0.80	161.90	5,806.8	-694.6	-234.1	733.0	0.22	0.00	15.70	
5,981.0	0.70	152.80	5,900.7	-695.8	-233.6	733.9	0.17	-0.11	-9.68	

Company:	EnCana Oil & Gas Weld County CO	Local Co-ordinate Reference:	Well Aristocrat Angus 1-4
Project:	SEC.4-T3N-R65W	TVD Reference:	WELL @ 4827.0ft (Original Well Elev)
Site:	Aristocrat Angus 1-4 Pad Sec.4-T3N-R65W	MD Reference:	WELL @ 4827.0ft (Original Well Elev)
Well:	Aristocrat Angus 1-4	North Reference:	True
Wellbore:	Wellbore #1	Survey Calculation Method:	Minimum Curvature
Design:	Wellbore #1	Database:	Landmark

Survey									
Measured Depth (ft)	Inclination (°)	Azimuth (°)	Vertical Depth (ft)	+N/-S (ft)	+E/-W (ft)	Vertical Section (ft)	Dogleg Rate (°/100ft)	Build Rate (°/100ft)	Turn Rate (°/100ft)
6,075.0	0.40	129.40	5,994.7	-696.5	-233.1	734.4	0.39	-0.32	-24.89
6,168.0	0.50	125.40	6,087.7	-696.9	-232.5	734.7	0.11	0.11	-4.30
6,262.0	0.40	119.20	6,181.7	-697.3	-231.9	734.8	0.12	-0.11	-6.60
6,356.0	0.40	123.30	6,275.7	-697.7	-231.3	735.0	0.03	0.00	4.36
6,450.0	0.40	95.10	6,369.7	-697.9	-230.7	735.0	0.21	0.00	-30.00
6,544.0	0.40	79.80	6,463.7	-697.8	-230.1	734.7	0.11	0.00	-16.28
6,638.0	0.40	106.00	6,557.7	-697.9	-229.4	734.6	0.19	0.00	27.87
6,733.0	0.40	108.30	6,652.7	-698.1	-228.8	734.5	0.02	0.00	2.42
6,827.0	0.40	107.60	6,746.7	-698.3	-228.2	734.5	0.01	0.00	-0.74
6,921.0	0.40	104.30	6,840.7	-698.4	-227.6	734.5	0.02	0.00	-3.51
6,965.2	0.39	117.83	6,884.9	-698.6	-227.3	734.5	0.21	-0.03	30.60
TARGET CIRCLE 1320'FNL & 1320'FEL									
6,965.3	0.39	117.83	6,885.0	-698.6	-227.3	734.5	0.00	0.00	0.00
LEGAL BOX 800' X 800' 1324'FNL, 1313'FEL									
7,015.0	0.40	133.10	6,934.7	-698.7	-227.0	734.6	0.21	0.03	30.72
7,110.0	0.30	134.00	7,029.7	-699.1	-226.6	734.8	0.11	-0.11	0.95
7,204.0	0.10	117.80	7,123.7	-699.4	-226.3	735.0	0.22	-0.21	-17.23
7,298.0	0.30	160.00	7,217.7	-699.6	-226.2	735.2	0.25	0.21	44.89
7,393.0	0.10	246.00	7,312.7	-699.9	-226.2	735.4	0.33	-0.21	90.53
7,405.0	0.20	195.30	7,324.7	-699.9	-226.2	735.4	1.31	0.83	-422.50
7,450.0	0.20	195.30	7,369.7	-700.1	-226.2	735.6	0.00	0.00	0.00

Checked By: _____	Approved By: _____	Date: _____
-------------------	--------------------	-------------