

The Road to Excellence Starts with Safety

Sold To #: 300721				Ship To #: 2896846				Quote #:				Sales Order #: 9135084			
Customer: WILLIAMS PRODUCTION RMT INC - EBUS								Customer Rep: Olsen, Mike							
Well Name: RWF				Well #: 422-32				API/UWI #: 05-045-21050							
Field: RULISON				City (SAP): RIFLE				County/Parish: Garfield				State: Colorado			
Lat: N 39.486 deg. OR N 39 deg. 29 min. 8.617 secs.								Long: W 107.916 deg. OR W -108 deg. 5 min. 3.52 secs.							
Contractor: Cyclone Drilling, Inc.				Rig/Platform Name/Num: Cyclone 17											
Job Purpose: Cement Surface Casing															
Well Type: Development Well				Job Type: Cement Surface Casing											
Sales Person: SCOTT, KYLE				Srvc Supervisor: YOUNG, JEREMY				MBU ID Emp #: 418013							
Job Personnel															
HES Emp Name		Exp Hrs	Emp #	HES Emp Name		Exp Hrs	Emp #	HES Emp Name		Exp Hrs	Emp #				
BATH, KYLE Thomas		7.5	477632	KUKUS, CARLTON Dean		7.5	458577	ROSS, CHARLES Raymond		7.5	453128				
YOUNG, JEREMY R		7.5	418013												
Equipment															
HES Unit #		Distance-1 way	HES Unit #		Distance-1 way	HES Unit #		Distance-1 way	HES Unit #		Distance-1 way				
10592964		60 mile	10744549		60 mile	11259881		60 mile	11560046		60 mile				
11562538		60 mile													
Job Hours															
Date	On Location Hours	Operating Hours	Date	On Location Hours	Operating Hours	Date	On Location Hours	Operating Hours							
12/15/2011	7.5	3													
TOTAL			Total is the sum of each column separately												
Job						Job Times									
Formation Name							Date	Time	Time Zone						
Formation Depth (MD)		Top	Bottom			Called Out	15 - Dec - 2011	11:30	MST						
Form Type		BHST				On Location	15 - Dec - 2011	15:00	MST						
Job depth MD		1121. ft		Job Depth TVD		1121. ft	Job Started	15 - Dec - 2011	20:08	MST					
Water Depth		Wk Ht Above Floor		4. ft		Job Completed	15 - Dec - 2011	21:11	MST						
Perforation Depth (MD)		From	To			Departed Loc	15 - Dec - 2011	22:30	MST						
Well Data															
Description	New / Used	Max pressure psig	Size in	ID in	Weight lbm/ft	Thread	Grade	Top MD ft	Bottom MD ft	Top TVD ft	Bottom TVD ft				
13 1/2" Open Hole				13.5				.	1160.						
9 5/8" Surface Casing	New		9.625	9.001	32.3		H-40	.	1121.						
Sales/Rental/3 rd Party (HES)															
Description							Qty	Qty uom	Depth	Supplier					
PLUG,CMTG,TOP,9 5/8,HWE,8.16 MIN/9.06 MA							1	EA							
Tools and Accessories															
Type	Size	Qty	Make	Depth	Type	Size	Qty	Make	Depth	Type	Size	Qty	Make		
Guide Shoe					Packer					Top Plug	9.625	1	HES		
Float Shoe					Bridge Plug					Bottom Plug					
Float Collar					Retainer					SSR plug set					
Insert Float										Plug Container	9.625	1	HES		
Stage Tool										Centralizers					
Miscellaneous Materials															
Gelling Agt		Conc		Surfactant		Conc		Acid Type		Qty		Conc	%		
Treatment Fld		Conc		Inhibitor		Conc		Sand Type		Size		Qty			

Fluid Data

Stage/Plug #: 1

Fluid #	Stage Type	Fluid Name	Qty	Qty uom	Mixing Density lbm/gal	Yield ft ³ /sk	Mix Fluid Gal/sk	Rate bbl/min	Total Mix Fluid Gal/sk
1	Water Spacer	FRESH WATER	20.00	bbl	8.34	.0	.0	4	
2	VersaCem Lead Cement	VERSACEM (TM) SYSTEM (452010)	160.0	sacks	12.3	2.38	13.75	8	13.75
	13.75 Gal	FRESH WATER							
3	VersaCem Tail Cement	VERSACEM (TM) SYSTEM (452010)	160.0	sacks	12.8	2.11	11.75	8	11.75
	11.75 Gal	FRESH WATER							
4	Displacement Fluid	FRESH WATER	85.00	bbl	8.34	.0	.0	10	
Calculated Values		Pressures		Volumes					
Displacement	85	Shut In: Instant		Lost Returns	NO	Cement Slurry	127.9	Pad	
Top Of Cement	SURFACE	5 Min		Cement Returns	30	Actual Displacement	85	Treatment	
Frac Gradient		15 Min		Spacers	20	Load and Breakdown		Total Job	232.9
Rates									
Circulating		Mixing	8	Displacement	10	Avg. Job	9		
Cement Left In Pipe	Amount	40.88 ft	Reason	Shoe Joint					
Frac Ring # 1 @	ID	Frac ring # 2 @	ID	Frac Ring # 3 @	ID	Frac Ring # 4 @	ID		
The Information Stated Herein Is Correct				Customer Representative Signature					

The Road to Excellence Starts with Safety

Sold To #: 300721		Ship To #: 2896846		Quote #:		Sales Order #: 9135084	
Customer: WILLIAMS PRODUCTION RMT INC - EBUS				Customer Rep: Olsen, Mike			
Well Name: RWF			Well #: 422-32		API/UWI #: 05-045-21050		
Field: RULISON		City (SAP): RIFLE		County/Parish: Garfield		State: Colorado	
Legal Description:							
Lat: N 39.486 deg. OR N 39 deg. 29 min. 8.617 secs.				Long: W 107.916 deg. OR W -108 deg. 5 min. 3.52 secs.			
Contractor: Cyclone Drilling, Inc.			Rig/Platform Name/Num: Cyclone 17				
Job Purpose: Cement Surface Casing						Ticket Amount:	
Well Type: Development Well			Job Type: Cement Surface Casing				
Sales Person: SCOTT, KYLE			Srvc Supervisor: YOUNG, JEREMY			MBU ID Emp #: 418013	

Activity Description	Date/Time	Cht #	Rate bbl/min	Volume bbl		Pressure psig		Comments
				Stage	Total	Tubing	Casing	
Call Out	12/15/2011 11:30							TD 1160 FT, TP 1121 FT, SHOE 40.88 FT, HOLE 13 1/2 IN, MUD WT 10.5 PPG, CSG 9 5/8 IN 32.3 LB/FT H-40
Pre-Convoy Safety Meeting	12/15/2011 12:50							WITH ALL HES PERSONNEL
Crew Leave Yard	12/15/2011 13:00							
Arrive At Loc	12/15/2011 15:00							RIG WAS PULLING DRILL PIPE UPON HES ARRIVAL
Assessment Of Location Safety Meeting	12/15/2011 19:00							WITH ALL HES PERSONNEL
Other	12/15/2011 19:05							SPOT EQUIPMENT
Pre-Rig Up Safety Meeting	12/15/2011 19:15							WITH ALL HES PERSONNEL
Rig-Up Equipment	12/15/2011 19:20							
Pre-Job Safety Meeting	12/15/2011 19:50							WITH ALL PERSONNEL ON LOCATION
Start Job	12/15/2011 20:08							
Other	12/15/2011 20:09		2	2			50.0	FILL LINES WITH FRESH WATER
Test Lines	12/15/2011 20:11							TEST LINES TO 3700 PSI. PRESSURE HOLDING
Pump Spacer 1	12/15/2011 20:17		4	20				FRESH WATER
Pump Lead Cement	12/15/2011 20:26		8	67.8			350.0	160 SKS AT 12.3 PPG, 2.38 FT3/SK, 13.75 GAL/SK
Activity Description	Date/Time	Cht	Rate bbl/min	Volume bbl		Pressure psig		Comments

Sold To #: 300721

Ship To #: 2896846

Quote #:

Sales Order #:

9135084

SUMMIT Version: 7.2.27

Thursday, December 15, 2011 09:50:00

HALLIBURTON

Cementing Job Log

		#		Stage	Total	Tubing	Casing	
Pump Tail Cement	12/15/2011 20:37		8	60.1			330.0	160 SKS AT 12.8 PPG, 2.11 FT3/SK, 11.75 GAL/SK
Shutdown	12/15/2011 20:45							
Drop Top Plug	12/15/2011 20:48							PLUG LAUNCHED
Pump Displacement	12/15/2011 20:49		10	75			550.0	FRESH WATER
Slow Rate	12/15/2011 21:01		2	10			275.0	SLOW RATE 10 BBLS PRIOR TO CALCULATED DISPLACEMENT
Bump Plug	12/15/2011 21:06		2		85		875.0	PLUG BUMPED
Check Floats	12/15/2011 21:09							FLOATS HOLDING. RETURNED 0.5 BBL H2O TO PUMP
End Job	12/15/2011 21:11							PIPE WAS STATIC DURING JOB. GOOD CIRCULATION THROUGHOUT JOB. HES RETURNED 30 BBL CMT TO SURFACE
Pre-Rig Down Safety Meeting	12/15/2011 21:20							WITH ALL HES PERSONNEL
Rig-Down Equipment	12/15/2011 21:30							
Pre-Convoy Safety Meeting	12/15/2011 22:20							WITH ALL HES PERSONNEL
Crew Leave Location	12/15/2011 22:30							
Comment	12/15/2011 22:31							THANK YOU FOR USING HALLIBURTON CEMENT DEPARTMENT. JEREMY YOUNG AND CREW.

Sold To # : 300721

Ship To # :2896846

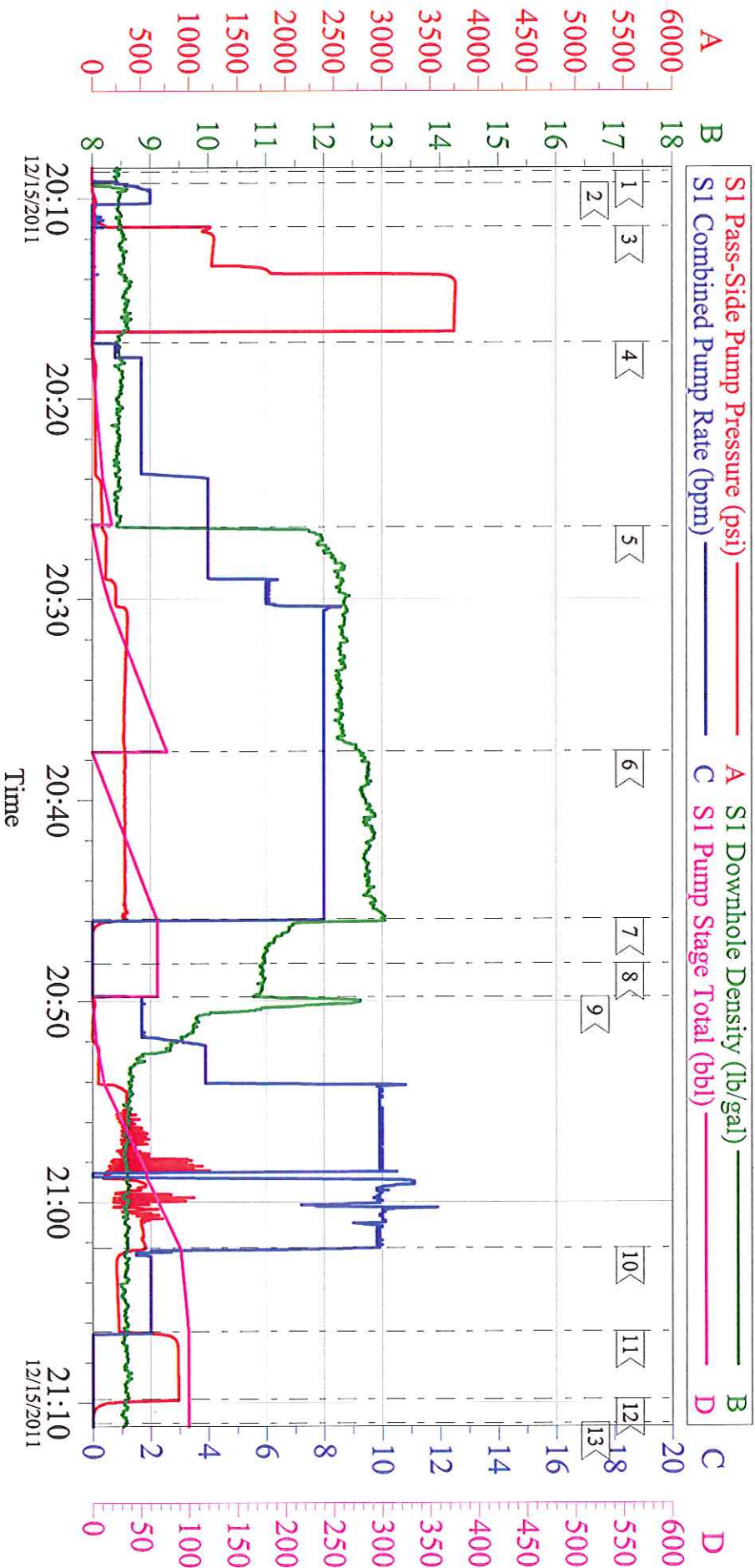
Quote # :

Sales Order # : 9135084

SUMMIT Version: 7.2.27

Thursday, December 15, 2011 09:50:00

WILLIAMS - RWF 422-32 9 5/8 SURFACE



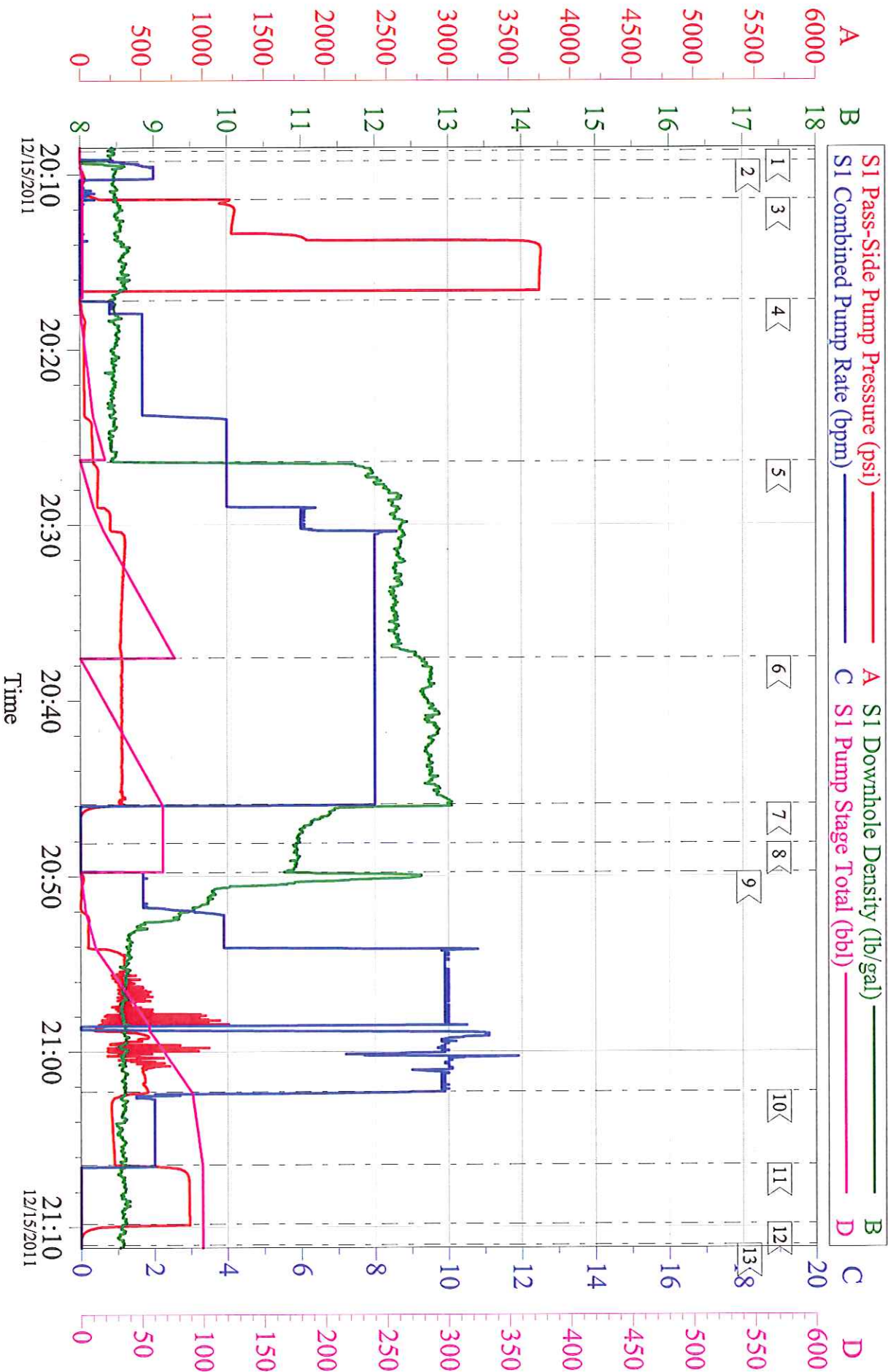
Customer: WILLIAMS
Well Description: RWF 422-32
Company Rep: MIKE OLSEN

Job Date: 15-Dec-2011
Job Type: SURFACE
Cement Supervisor: JEREMY YOUNG

Sales Order #: 9135084
ADC Used: YES
Elite #: KYLE BATH

WILLIAMS - RWF 422-32

9 5/8 SURFACE



Customer: WILLIAMS
Well Description: RWF 422-32
Company Rep: MIKE OLSEN

Job Date: 15-Dec-2011
Job Type: SURFACE
Cement Supervisor: JEREMY YOUNG

Sales Order #: 9135084
ADC Used: YES
Elite #: KYLE BATH

OptiCem v6.4.10
15-Dec-11 21:17