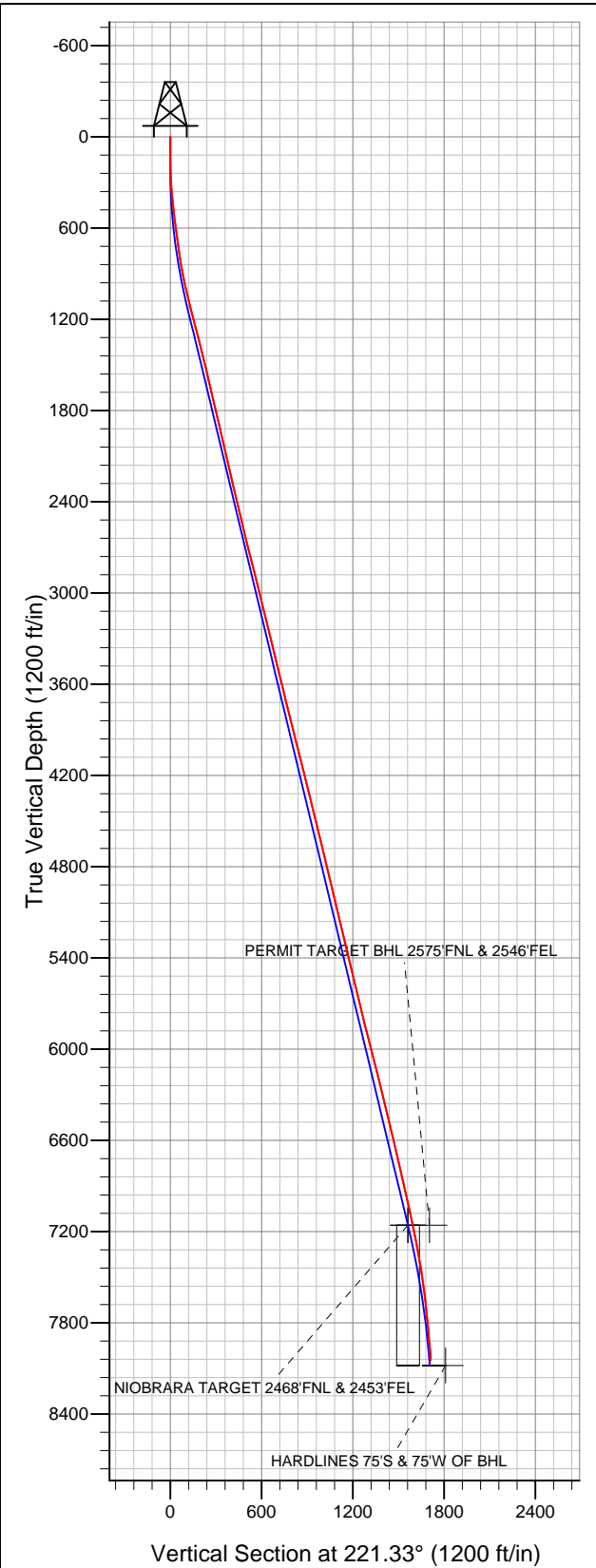


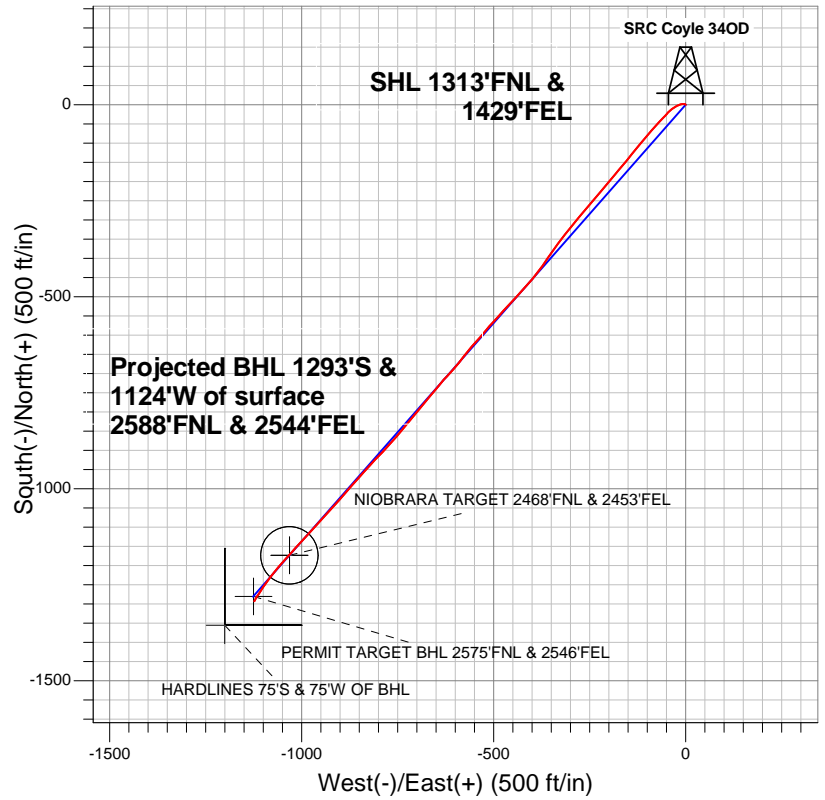
Well Name: SRC Coyle 340D

Surface Location: SRC Coyle 31-34D Pad Sec.34-T4N-R68W
 North American Datum 1983 US State Plane 1983Colorado Northern Zone
 Ground Elevation: 5110.0

+N/-S	+E/-W	Northing	Easting	Latitude	Longitude	Slot
0.0	0.0	1342928.73	3143726.53	40.273593	-104.984903	
Original Well Elev		WELL @ 5122.0ft (Original Well Elev)				



Synergy Resources



LEGEND

- Wellbore #1
- SRC Coyle 340D, Wellbore #1, Plan #2 (8-01-12) R V0
- Survey #1

Final Survey Plot

Projected Final Survey -
 8242'MD & 8047'TVD @ 1713'VS
 4.70 deg Inc 205.50 deg AZ

Project: SEC.34-T4N-R68W
 Site: SRC Coyle 31-34D Pad Sec.34-T4N-R68W
 Well: SRC Coyle 340D
 Plan: Wellbore #1



Synergy Resources

SEC.34-T4N-R68W

SRC Coyle 31-34D Pad Sec.34-T4N-R68W

SRC Coyle 34OD

Wellbore #1

Survey: Survey #1

Standard Survey Report

13 August, 2012

Company:	Synergy Resources	Local Co-ordinate Reference:	Well SRC Coyle 34OD
Project:	SEC.34-T4N-R68W	TVD Reference:	WELL @ 5122.0ft (Original Well Elev)
Site:	SRC Coyle 31-34D Pad Sec.34-T4N-R68W	MD Reference:	WELL @ 5122.0ft (Original Well Elev)
Well:	SRC Coyle 34OD	North Reference:	True
Wellbore:	Wellbore #1	Survey Calculation Method:	Minimum Curvature
Design:	Wellbore #1	Database:	Landmark

Project	SEC.34-T4N-R68W, Weld County, Colorado		
Map System:	US State Plane 1983	System Datum:	Mean Sea Level
Geo Datum:	North American Datum 1983		Using Well Reference Point
Map Zone:	Colorado Northern Zone		Using geodetic scale factor

Site		SRC Coyle 31-34D Pad Sec.34-T4N-R68W			
Site Position:		Northing:	1,342,971.13ft	Latitude:	40.273710
From:	Lat/Long	Easting:	3,143,684.15ft	Longitude:	-104.985054
Position Uncertainty:	0.0 ft	Slot Radius:	"	Grid Convergence:	0.33 °

Well	SRC Coyle 34OD					
Well Position	+N/-S	0.0 ft	Northing:	1,342,928.73 ft	Latitude:	40.273593
	+E/-W	0.0 ft	Easting:	3,143,726.53 ft	Longitude:	-104.984903
Position Uncertainty		0.0 ft	Wellhead Elevation:	ft	Ground Level:	5,110.0 ft

Wellbore	Wellbore #1				
Magnetics	Model Name	Sample Date	Declination (°)	Dip Angle (°)	Field Strength (nT)
	IGRF2010	8/1/2012	8.82	66.87	52,920

Design	Wellbore #1				
Audit Notes:					
Version:	1.0	Phase:	ACTUAL	Tie On Depth:	0.0
Vertical Section:	Depth From (TVD) (ft)	+N/-S (ft)	+E/-W (ft)	Direction (°)	
	7,157.0	0.0	0.0	221.33	

Survey Program		Date	8/13/2012		
From (ft)	To (ft)	Survey (Wellbore)	Tool Name	Description	
118.0	8,242.0	Survey #1 (Wellbore #1)	MWD	MWD - Standard	

Survey									
Measured Depth (ft)	Inclination (°)	Azimuth (°)	Vertical Depth (ft)	+N-S (ft)	+E-W (ft)	Vertical Section (ft)	Dogleg Rate (°/100ft)	Build Rate (°/100ft)	Turn Rate (°/100ft)
0.0	0.00	0.00	0.0	0.0	0.0	0.0	0.00	0.00	0.00
118.0	1.40	304.30	118.0	0.8	-1.2	0.2	1.19	1.19	0.00
209.0	2.50	283.60	208.9	1.9	-4.0	1.2	1.42	1.21	-22.75
302.0	4.70	259.80	301.8	1.7	-9.8	5.2	2.81	2.37	-25.59
394.0	5.80	248.10	393.4	-0.7	-17.8	12.3	1.66	1.20	-12.72
486.0	7.30	238.60	484.8	-5.5	-27.1	22.0	2.01	1.63	-10.33
577.0	7.70	233.70	575.0	-12.1	-36.9	33.5	0.83	0.44	-5.38
644.0	8.00	223.10	641.4	-18.2	-43.7	42.5	2.20	0.45	-15.82
705.0	7.50	221.30	701.8	-24.2	-49.3	50.7	0.91	-0.82	-2.95
797.0	8.40	225.60	792.9	-33.5	-58.0	63.4	1.17	0.98	4.67
891.0	10.70	221.30	885.6	-44.8	-68.7	79.0	2.56	2.45	-4.57
985.0	12.60	223.50	977.7	-58.8	-81.5	98.0	2.08	2.02	2.34
1,078.0	13.80	218.70	1,068.2	-74.8	-95.4	119.2	1.75	1.29	-5.16

Company:	Synergy Resources	Local Co-ordinate Reference:	Well SRC Coyle 34OD
Project:	SEC.34-T4N-R68W	TVD Reference:	WELL @ 5122.0ft (Original Well Elev)
Site:	SRC Coyle 31-34D Pad Sec.34-T4N-R68W	MD Reference:	WELL @ 5122.0ft (Original Well Elev)
Well:	SRC Coyle 34OD	North Reference:	True
Wellbore:	Wellbore #1	Survey Calculation Method:	Minimum Curvature
Design:	Wellbore #1	Database:	Landmark

Survey										
Measured Depth (ft)	Inclination (°)	Azimuth (°)	Vertical Depth (ft)	+N/-S (ft)	+E/-W (ft)	Vertical Section (ft)	Dogleg Rate (°/100ft)	Build Rate (°/100ft)	Turn Rate (°/100ft)	
1,172.0	14.90	221.20	1,159.3	-92.7	-110.4	142.5	1.34	1.17	2.66	
1,266.0	14.40	218.50	1,250.2	-110.9	-125.6	166.3	0.90	-0.53	-2.87	
1,360.0	14.30	218.50	1,341.3	-129.1	-140.1	189.5	0.11	-0.11	0.00	
1,453.0	13.50	220.50	1,431.6	-146.4	-154.3	211.9	1.00	-0.86	2.15	
1,547.0	13.90	221.00	1,522.9	-163.3	-168.9	234.1	0.44	0.43	0.53	
1,641.0	13.20	217.80	1,614.3	-180.3	-182.9	256.1	1.09	-0.74	-3.40	
1,735.0	12.70	221.00	1,705.9	-196.5	-196.2	277.2	0.93	-0.53	3.40	
1,828.0	13.40	219.60	1,796.5	-212.6	-209.8	298.2	0.83	0.75	-1.51	
1,922.0	13.10	218.90	1,888.0	-229.2	-223.4	319.7	0.36	-0.32	-0.74	
2,016.0	13.40	221.70	1,979.5	-245.7	-237.4	341.2	0.75	0.32	2.98	
2,109.0	13.10	221.70	2,070.0	-261.6	-251.5	362.5	0.32	-0.32	0.00	
2,203.0	12.80	220.50	2,161.6	-277.4	-265.4	383.6	0.43	-0.32	-1.28	
2,297.0	12.80	218.00	2,253.3	-293.6	-278.6	404.4	0.59	0.00	-2.66	
2,390.0	13.20	219.80	2,343.9	-309.8	-291.7	425.3	0.61	0.43	1.94	
2,484.0	13.60	217.80	2,435.3	-326.8	-305.3	447.1	0.65	0.43	-2.13	
2,578.0	13.70	218.20	2,526.7	-344.3	-319.0	469.2	0.15	0.11	0.43	
2,671.0	13.50	216.40	2,617.1	-361.7	-332.3	491.0	0.50	-0.22	-1.94	
2,765.0	14.80	216.20	2,708.2	-380.2	-345.9	513.9	1.38	1.38	-0.21	
2,859.0	14.30	214.70	2,799.2	-399.5	-359.6	537.4	0.67	-0.53	-1.60	
2,953.0	13.50	215.40	2,890.5	-417.9	-372.5	559.9	0.87	-0.85	0.74	
3,046.0	14.20	215.70	2,980.8	-436.1	-385.5	582.0	0.76	0.75	0.32	
3,140.0	13.20	218.00	3,072.1	-453.9	-398.8	604.2	1.21	-1.06	2.45	
3,234.0	14.20	222.10	3,163.4	-470.9	-413.1	626.4	1.48	1.06	4.36	
3,328.0	14.20	225.60	3,254.5	-487.5	-429.1	649.5	0.91	0.00	3.72	
3,421.0	13.50	221.70	3,344.8	-503.6	-444.5	671.7	1.25	-0.75	-4.19	
3,515.0	13.60	222.40	3,436.2	-519.9	-459.2	693.7	0.20	0.11	0.74	
3,609.0	13.50	223.10	3,527.6	-536.1	-474.2	715.7	0.20	-0.11	0.74	
3,702.0	13.80	221.90	3,618.0	-552.3	-489.0	737.7	0.44	0.32	-1.29	
3,796.0	13.50	222.60	3,709.3	-568.7	-503.9	759.9	0.36	-0.32	0.74	
3,890.0	14.30	219.90	3,800.6	-585.7	-518.8	782.4	1.10	0.85	-2.87	
3,984.0	13.80	219.80	3,891.8	-603.2	-533.4	805.2	0.53	-0.53	-0.11	
4,077.0	15.10	223.10	3,981.8	-620.6	-548.8	828.4	1.65	1.40	3.55	
4,171.0	13.60	218.70	4,072.9	-638.2	-564.1	851.7	1.97	-1.60	-4.68	
4,265.0	13.50	217.70	4,164.3	-655.5	-577.7	873.7	0.27	-0.11	-1.06	
4,358.0	14.10	218.70	4,254.6	-672.9	-591.4	895.9	0.69	0.65	1.08	
4,452.0	14.40	221.30	4,345.7	-690.6	-606.3	919.0	0.75	0.32	2.77	
4,546.0	14.10	224.20	4,436.8	-707.6	-622.0	942.1	0.82	-0.32	3.09	
4,640.0	13.60	218.90	4,528.1	-724.4	-636.9	964.6	1.45	-0.53	-5.64	
4,733.0	13.10	218.70	4,618.6	-741.1	-650.4	986.0	0.54	-0.54	-0.22	
4,827.0	14.20	221.20	4,709.9	-758.1	-664.6	1,008.2	1.33	1.17	2.66	
4,920.0	13.80	219.40	4,800.1	-775.3	-679.2	1,030.7	0.64	-0.43	-1.94	
5,014.0	12.80	218.90	4,891.6	-792.1	-692.8	1,052.3	1.07	-1.06	-0.53	
5,108.0	13.00	220.30	4,983.2	-808.2	-706.2	1,073.3	0.39	0.21	1.49	
5,202.0	12.80	220.30	5,074.9	-824.2	-719.8	1,094.3	0.21	-0.21	0.00	
5,295.0	13.80	219.10	5,165.4	-840.7	-733.4	1,115.7	1.12	1.08	-1.29	
5,389.0	14.20	219.80	5,256.6	-858.3	-747.9	1,138.4	0.46	0.43	0.74	
5,483.0	13.90	221.50	5,347.8	-875.6	-762.8	1,161.2	0.54	-0.32	1.81	
5,577.0	14.00	223.30	5,439.0	-892.3	-778.0	1,183.8	0.47	0.11	1.91	
5,671.0	13.50	224.20	5,530.3	-908.4	-793.5	1,206.2	0.58	-0.53	0.96	
5,764.0	12.90	222.90	5,620.8	-923.8	-808.1	1,227.4	0.72	-0.65	-1.40	
5,858.0	13.80	222.60	5,712.3	-939.8	-822.8	1,249.1	0.96	0.96	-0.32	
5,952.0	13.50	221.70	5,803.6	-956.2	-837.7	1,271.3	0.39	-0.32	-0.96	
6,045.0	14.80	221.50	5,893.8	-973.2	-852.8	1,294.0	1.40	1.40	-0.22	
6,139.0	13.70	221.90	5,984.9	-990.5	-868.2	1,317.1	1.17	-1.17	0.43	

Company:	Synergy Resources	Local Co-ordinate Reference:	Well SRC Coyle 34OD
Project:	SEC.34-T4N-R68W	TVD Reference:	WELL @ 5122.0ft (Original Well Elev)
Site:	SRC Coyle 31-34D Pad Sec.34-T4N-R68W	MD Reference:	WELL @ 5122.0ft (Original Well Elev)
Well:	SRC Coyle 34OD	North Reference:	True
Wellbore:	Wellbore #1	Survey Calculation Method:	Minimum Curvature
Design:	Wellbore #1	Database:	Landmark

Survey

Measured Depth (ft)	Inclination (°)	Azimuth (°)	Vertical Depth (ft)	+N/-S (ft)	+E/-W (ft)	Vertical Section (ft)	Dogleg Rate (°/100ft)	Build Rate (°/100ft)	Turn Rate (°/100ft)
6,233.0	14.20	220.80	6,076.2	-1,007.5	-883.2	1,339.8	0.60	0.53	-1.17
6,327.0	14.10	222.20	6,167.3	-1,024.7	-898.4	1,362.8	0.38	-0.11	1.49
6,421.0	14.40	220.80	6,258.4	-1,042.0	-913.7	1,385.9	0.49	0.32	-1.49
6,514.0	14.00	221.30	6,348.6	-1,059.2	-928.7	1,408.7	0.45	-0.43	0.54
6,608.0	12.90	223.30	6,440.0	-1,075.4	-943.4	1,430.6	1.27	-1.17	2.13
6,702.0	13.20	222.20	6,531.6	-1,091.0	-957.8	1,451.8	0.41	0.32	-1.17
6,796.0	12.90	223.10	6,623.1	-1,106.6	-972.2	1,473.0	0.39	-0.32	0.96
6,889.0	13.00	221.50	6,713.8	-1,122.0	-986.2	1,493.9	0.40	0.11	-1.72
6,983.0	13.50	223.60	6,805.3	-1,137.9	-1,000.8	1,515.4	0.74	0.53	2.23
7,077.0	12.60	221.30	6,896.8	-1,153.6	-1,015.1	1,536.6	1.11	-0.96	-2.45
7,171.0	12.90	222.10	6,988.5	-1,169.0	-1,028.9	1,557.4	0.37	0.32	0.85
7,264.0	12.20	223.80	7,079.3	-1,183.8	-1,042.7	1,577.6	0.85	-0.75	1.83
7,336.9	11.96	220.25	7,150.6	-1,195.2	-1,052.9	1,592.8	1.07	-0.33	-4.87
TARGET CIRCLE 2468'FNL & 2453'FEL									
7,337.0	11.96	220.25	7,150.7	-1,195.2	-1,052.9	1,592.8	0.00	0.00	0.00
NIOBRARA TARGET 2468'FNL & 2453'FEL									
7,358.0	11.90	219.20	7,171.2	-1,198.5	-1,055.7	1,597.2	1.07	-0.29	-5.00
7,365.5	11.84	219.23	7,178.5	-1,199.7	-1,056.7	1,598.7	0.86	-0.85	0.40
PERMIT TARGET BHL 2575'FNL & 2546'FEL									
7,452.0	11.10	219.60	7,263.3	-1,213.0	-1,067.6	1,615.9	0.86	-0.85	0.43
7,545.0	9.90	218.20	7,354.8	-1,226.2	-1,078.2	1,632.8	1.32	-1.29	-1.51
7,639.0	9.60	216.10	7,447.4	-1,238.9	-1,087.9	1,648.7	0.49	-0.32	-2.23
7,733.0	7.70	215.90	7,540.4	-1,250.3	-1,096.2	1,662.8	2.02	-2.02	-0.21
7,827.0	6.80	211.70	7,633.6	-1,260.1	-1,102.8	1,674.5	1.11	-0.96	-4.47
7,921.0	6.10	212.60	7,727.0	-1,269.1	-1,108.4	1,685.0	0.75	-0.74	0.96
8,010.0	5.40	215.70	7,815.6	-1,276.5	-1,113.4	1,693.8	0.86	-0.79	3.48
8,104.0	4.70	214.50	7,909.2	-1,283.2	-1,118.2	1,702.0	0.75	-0.74	-1.28
8,200.0	4.70	205.50	8,004.9	-1,290.0	-1,122.1	1,709.7	0.77	0.00	-9.38
8,242.0	4.70	205.50	8,046.7	-1,293.1	-1,123.6	1,713.0	0.00	0.00	0.00
HARDLINES 75'S & 75'W OF BHL									

Checked By: _____ Approved By: _____ Date: _____