

Anadarko Petroleum Corp.

Weld County, CO (NAD 83)

Sec. 27-T2N-R65W

Powers 29C-27HZ

Plan A Rev 0

Plan: Plan A Rev 0 Permit

Sperry Drilling Services

Proposal Report

03 August, 2012

Well Coordinates: 1,281,754.40 N, 3,237,030.28 E (40° 06' 13.32" N, 104° 39' 09.45" W)

Ground Level: 4,949.00 ft

Local Coordinate Origin:	Centered on Well Powers 29C-27HZ
Viewing Datum:	RKB=17' @ 4966.00ft (Drilling Rig)
TVDs to System:	N
North Reference:	True
Unit System:	API - US Survey Feet - Custom

Geodetic Scale Factor Applied

Version: 2003.16 Build: 431

HALLIBURTON

Project: Weld County, CO (NAD 83)
 Site: Sec. 27-T2N-R65W
 Well: Powers 29C-27HZ
 Wellbore: Plan A Rev 0
 Design: Plan A Rev 0 Permit

Anadarko Petroleum Corp.

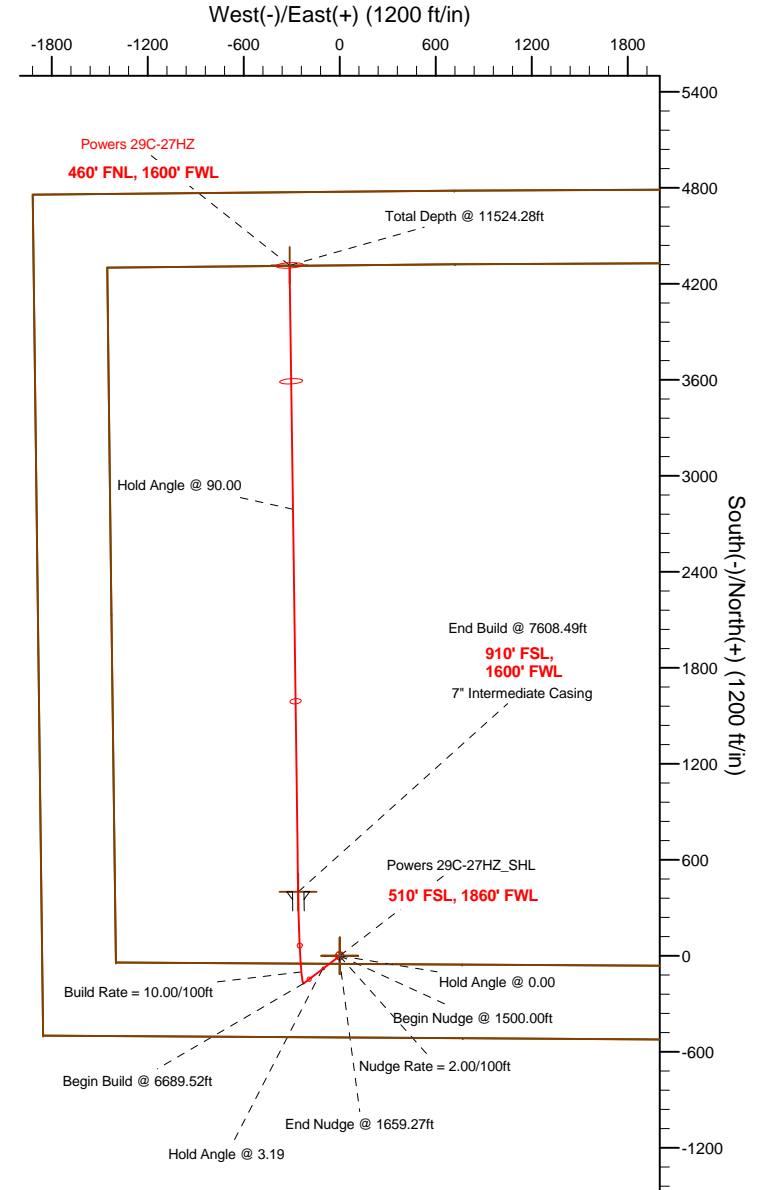
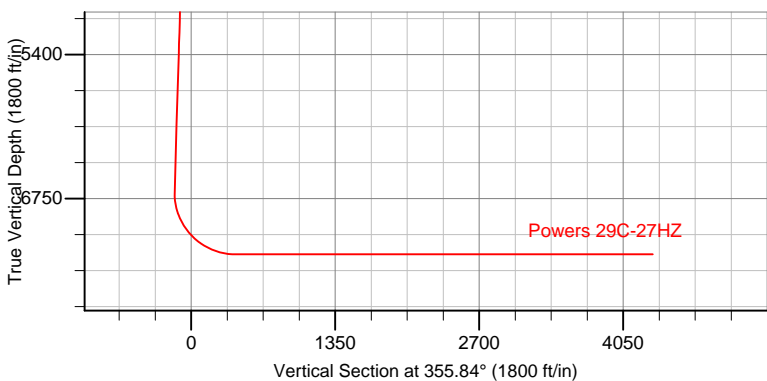
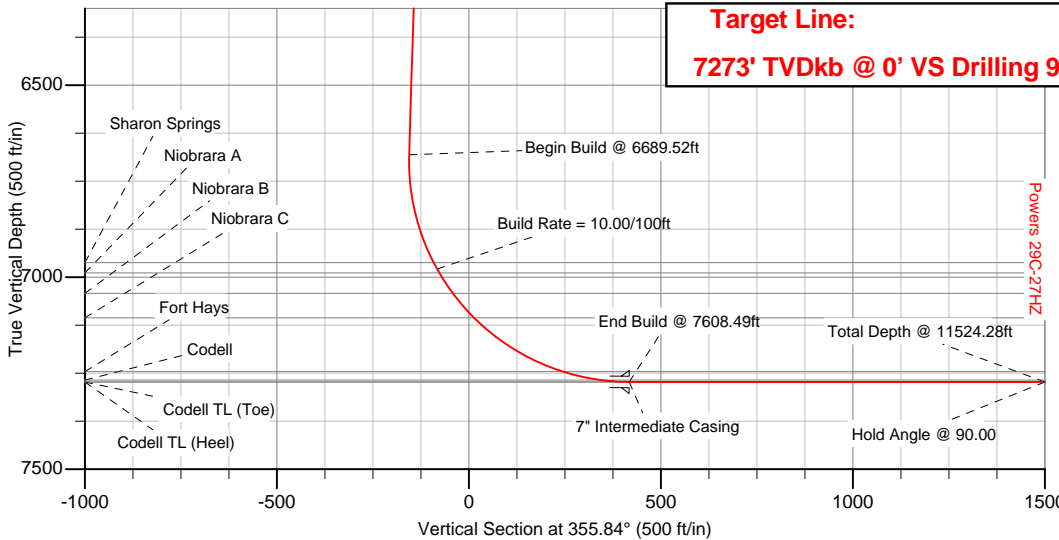


SECTION DETAILS

Sec	MD	Inc	Azi	TVD	+N/-S	+E/-W	DLeg	TFace	VSec	Target
1	0.00	0.00	0.00	0.00	0.00	0.00	0.00	0.00	0.00	
2	1500.00	0.00	0.00	1500.00	0.00	0.00	0.00	0.00	0.00	
3	1659.27	3.19	232.66	1659.19	-2.68	-3.52	2.00	232.66	-2.42	
4	6689.52	3.19	232.66	6681.67	-172.23	-225.74	0.00	0.00	-155.42	
5	7608.49	90.00	359.22	7273.00	400.00	-260.00	10.00	126.52	417.79	Powers 29C-27HZ_Casing Point
6	11524.28	90.00	359.22	7273.00	4315.43	-313.53	0.00	0.00	4326.80	Powers 29C-27HZ_BHL

WELLBORE TARGET DETAILS (LAT/LONG)

Name	TVD	+N/-S	+E/-W	Latitude	Longitude	Shape
Powers 29C-27HZ_Section Lines	0.00	0.00	0.00	40.103699	-104.652626	Polygon
Powers 29C-27HZ_Setback Lines	0.00	0.00	0.00	40.103699	-104.652626	Polygon
Powers 29C-27HZ_SHL	0.00	0.00	0.00	40.103699	-104.652626	Point
Powers 29C-27HZ_BHL	7273.00	4315.43	-313.53	40.115545	-104.653747	Point
Powers 29C-27HZ_Casing Point	7273.00	400.00	-260.00	40.104797	-104.653555	Point



WELL DETAILS: Powers 29C-27HZ	
Ground Level: 4949.00	RKB=17' @ 4966.00ft (Drilling Rig)
Plan: Plan A Rev 0 Permit (Powers 29C-27HZ/Plan A Rev 0)	
Created By: Fred Hartmann	Date: 08/03/2012
Reviewed: _____	Date: _____

Plan Report for Powers 29C-27HZ - Plan A Rev 0 Permit

Measured Depth (ft)	Inclination (°)	Azimuth (°)	Vertical Depth (ft)	+N/-S (ft)	+E/-W (ft)	Vertical Section (ft)	Dogleg Rate (°/100ft)	Build Rate (°/100ft)	Turn Rate (°/100ft)	Tooface Azimuth (°)
0.00	0.00	0.00	0.00	0.00	0.00	0.00	0.00	0.00	0.00	0.00
Powers 29C-27HZ_SHL - Powers 29C-27HZ_Section Lines - Powers 29C-27HZ_Setback Lines										
100.00	0.00	0.00	100.00	0.00	0.00	0.00	0.00	0.00	0.00	0.00
200.00	0.00	0.00	200.00	0.00	0.00	0.00	0.00	0.00	0.00	0.00
300.00	0.00	0.00	300.00	0.00	0.00	0.00	0.00	0.00	0.00	0.00
400.00	0.00	0.00	400.00	0.00	0.00	0.00	0.00	0.00	0.00	0.00
500.00	0.00	0.00	500.00	0.00	0.00	0.00	0.00	0.00	0.00	0.00
600.00	0.00	0.00	600.00	0.00	0.00	0.00	0.00	0.00	0.00	0.00
700.00	0.00	0.00	700.00	0.00	0.00	0.00	0.00	0.00	0.00	0.00
800.00	0.00	0.00	800.00	0.00	0.00	0.00	0.00	0.00	0.00	0.00
Hold Angle @ 0.00										
900.00	0.00	0.00	900.00	0.00	0.00	0.00	0.00	0.00	0.00	0.00
1,000.00	0.00	0.00	1,000.00	0.00	0.00	0.00	0.00	0.00	0.00	0.00
1,100.00	0.00	0.00	1,100.00	0.00	0.00	0.00	0.00	0.00	0.00	0.00
1,200.00	0.00	0.00	1,200.00	0.00	0.00	0.00	0.00	0.00	0.00	0.00
1,300.00	0.00	0.00	1,300.00	0.00	0.00	0.00	0.00	0.00	0.00	0.00
1,400.00	0.00	0.00	1,400.00	0.00	0.00	0.00	0.00	0.00	0.00	0.00
1,406.00	0.00	0.00	1,406.00	0.00	0.00	0.00	0.00	0.00	0.00	0.00
Fox Hills										
1,500.00	0.00	0.00	1,500.00	0.00	0.00	0.00	0.00	0.00	0.00	0.00
Begin Nudge @ 1500.00ft										
1,600.00	2.00	232.66	1,599.98	-1.06	-1.39	-0.96	2.00	2.00	0.00	232.66
Nudge Rate = 2.00/100ft										
1,659.27	3.19	232.66	1,659.19	-2.68	-3.52	-2.42	2.00	2.00	0.00	0.00
End Nudge @ 1659.27ft										
1,700.00	3.19	232.66	1,699.86	-4.06	-5.32	-3.66	0.00	0.00	0.00	0.00
1,800.00	3.19	232.66	1,799.70	-7.43	-9.74	-6.70	0.00	0.00	0.00	0.00
1,900.00	3.19	232.66	1,899.55	-10.80	-14.15	-9.74	0.00	0.00	0.00	0.00
2,000.00	3.19	232.66	1,999.39	-14.17	-18.57	-12.79	0.00	0.00	0.00	0.00
2,100.00	3.19	232.66	2,099.24	-17.54	-22.99	-15.83	0.00	0.00	0.00	0.00
2,200.00	3.19	232.66	2,199.08	-20.91	-27.41	-18.87	0.00	0.00	0.00	0.00
2,300.00	3.19	232.66	2,298.93	-24.28	-31.82	-21.91	0.00	0.00	0.00	0.00
2,400.00	3.19	232.66	2,398.77	-27.65	-36.24	-24.95	0.00	0.00	0.00	0.00
2,500.00	3.19	232.66	2,498.62	-31.02	-40.66	-27.99	0.00	0.00	0.00	0.00
2,600.00	3.19	232.66	2,598.46	-34.39	-45.08	-31.04	0.00	0.00	0.00	0.00
2,700.00	3.19	232.66	2,698.31	-37.76	-49.50	-34.08	0.00	0.00	0.00	0.00
2,800.00	3.19	232.66	2,798.16	-41.13	-53.91	-37.12	0.00	0.00	0.00	0.00
2,900.00	3.19	232.66	2,898.00	-44.50	-58.33	-40.16	0.00	0.00	0.00	0.00
3,000.00	3.19	232.66	2,997.85	-47.87	-62.75	-43.20	0.00	0.00	0.00	0.00
3,100.00	3.19	232.66	3,097.69	-51.24	-67.17	-46.24	0.00	0.00	0.00	0.00
3,200.00	3.19	232.66	3,197.54	-54.61	-71.58	-49.28	0.00	0.00	0.00	0.00
3,300.00	3.19	232.66	3,297.38	-57.99	-76.00	-52.33	0.00	0.00	0.00	0.00
3,400.00	3.19	232.66	3,397.23	-61.36	-80.42	-55.37	0.00	0.00	0.00	0.00
3,500.00	3.19	232.66	3,497.07	-64.73	-84.84	-58.41	0.00	0.00	0.00	0.00
3,600.00	3.19	232.66	3,596.92	-68.10	-89.25	-61.45	0.00	0.00	0.00	0.00
3,700.00	3.19	232.66	3,696.77	-71.47	-93.67	-64.49	0.00	0.00	0.00	0.00
3,800.00	3.19	232.66	3,796.61	-74.84	-98.09	-67.53	0.00	0.00	0.00	0.00
3,900.00	3.19	232.66	3,896.46	-78.21	-102.51	-70.57	0.00	0.00	0.00	0.00
4,000.00	3.19	232.66	3,996.30	-81.58	-106.93	-73.62	0.00	0.00	0.00	0.00
Hold Angle @ 3.19										
4,100.00	3.19	232.66	4,096.15	-84.95	-111.34	-76.66	0.00	0.00	0.00	0.00
4,200.00	3.19	232.66	4,195.99	-88.32	-115.76	-79.70	0.00	0.00	0.00	0.00
4,300.00	3.19	232.66	4,295.84	-91.69	-120.18	-82.74	0.00	0.00	0.00	0.00
4,400.00	3.19	232.66	4,395.68	-95.06	-124.60	-85.78	0.00	0.00	0.00	0.00
4,500.00	3.19	232.66	4,495.53	-98.43	-129.01	-88.82	0.00	0.00	0.00	0.00
4,600.00	3.19	232.66	4,595.37	-101.80	-133.43	-91.87	0.00	0.00	0.00	0.00
4,700.00	3.19	232.66	4,695.22	-105.17	-137.85	-94.91	0.00	0.00	0.00	0.00

Plan Report for Powers 29C-27HZ - Plan A Rev 0 Permit

Measured Depth (ft)	Inclination (°)	Azimuth (°)	Vertical Depth (ft)	+N/-S (ft)	+E/-W (ft)	Vertical Section (ft)	Dogleg Rate (°/100ft)	Build Rate (°/100ft)	Turn Rate (°/100ft)	Toolface Azimuth (°)
4,800.00	3.19	232.66	4,795.07	-108.54	-142.27	-97.95	0.00	0.00	0.00	0.00
4,900.00	3.19	232.66	4,894.91	-111.91	-146.68	-100.99	0.00	0.00	0.00	0.00
5,000.00	3.19	232.66	4,994.76	-115.28	-151.10	-104.03	0.00	0.00	0.00	0.00
5,100.00	3.19	232.66	5,094.60	-118.65	-155.52	-107.07	0.00	0.00	0.00	0.00
5,121.43	3.19	232.66	5,116.00	-119.38	-156.47	-107.72	0.00	0.00	0.00	0.00
Sussex										
5,200.00	3.19	232.66	5,194.45	-122.02	-159.94	-110.11	0.00	0.00	0.00	0.00
5,300.00	3.19	232.66	5,294.29	-125.40	-164.36	-113.16	0.00	0.00	0.00	0.00
5,400.00	3.19	232.66	5,394.14	-128.77	-168.77	-116.20	0.00	0.00	0.00	0.00
5,500.00	3.19	232.66	5,493.98	-132.14	-173.19	-119.24	0.00	0.00	0.00	0.00
5,600.00	3.19	232.66	5,593.83	-135.51	-177.61	-122.28	0.00	0.00	0.00	0.00
5,700.00	3.19	232.66	5,693.68	-138.88	-182.03	-125.32	0.00	0.00	0.00	0.00
5,800.00	3.19	232.66	5,793.52	-142.25	-186.44	-128.36	0.00	0.00	0.00	0.00
5,900.00	3.19	232.66	5,893.37	-145.62	-190.86	-131.41	0.00	0.00	0.00	0.00
6,000.00	3.19	232.66	5,993.21	-148.99	-195.28	-134.45	0.00	0.00	0.00	0.00
6,100.00	3.19	232.66	6,093.06	-152.36	-199.70	-137.49	0.00	0.00	0.00	0.00
6,200.00	3.19	232.66	6,192.90	-155.73	-204.11	-140.53	0.00	0.00	0.00	0.00
6,300.00	3.19	232.66	6,292.75	-159.10	-208.53	-143.57	0.00	0.00	0.00	0.00
6,400.00	3.19	232.66	6,392.59	-162.47	-212.95	-146.61	0.00	0.00	0.00	0.00
6,500.00	3.19	232.66	6,492.44	-165.84	-217.37	-149.65	0.00	0.00	0.00	0.00
6,600.00	3.19	232.66	6,592.28	-169.21	-221.79	-152.70	0.00	0.00	0.00	0.00
6,689.52	3.19	232.66	6,681.67	-172.23	-225.74	-155.42	0.00	0.00	0.00	0.00
Begin Build @ 6689.52ft										
6,700.00	2.70	250.86	6,692.13	-172.49	-226.20	-155.64	10.00	-4.66	173.68	126.52
6,800.00	9.50	343.72	6,791.64	-165.32	-230.75	-148.16	10.00	6.80	92.86	108.34
6,900.00	19.31	351.89	6,888.39	-140.96	-235.41	-123.53	10.00	9.82	8.17	15.70
6,980.21	27.28	354.24	6,962.00	-109.49	-239.13	-91.87	10.00	9.93	2.94	7.76
Sharon Springs										
7,000.00	29.25	354.64	6,979.43	-100.16	-240.04	-82.50	10.00	9.96	1.99	5.59
Build Rate = 10.00/100ft										
7,011.03	30.35	354.84	6,989.00	-94.70	-240.54	-77.02	10.00	9.96	1.81	5.24
Niobrara A										
7,074.63	36.69	355.78	7,042.00	-59.71	-243.39	-41.92	10.00	9.97	1.48	5.07
Niobrara B										
7,100.00	39.22	356.08	7,062.00	-44.15	-244.49	-26.32	10.00	9.97	1.18	4.29
7,159.41	45.15	356.67	7,106.00	-4.35	-247.01	13.56	10.00	9.98	0.99	4.05
Niobrara C										
7,200.00	49.20	357.01	7,133.59	25.37	-248.65	43.32	10.00	9.98	0.83	3.61
7,300.00	59.19	357.69	7,192.02	106.28	-252.36	124.28	10.00	9.98	0.68	3.38
7,400.00	69.17	358.24	7,235.52	196.12	-255.54	214.12	10.00	9.99	0.55	2.98
7,431.81	72.35	358.40	7,246.00	226.14	-256.42	244.12	10.00	9.99	0.50	2.74
Fort Hays										
7,500.00	79.16	358.73	7,262.77	292.17	-258.07	310.11	10.00	9.99	0.48	2.69
7,532.70	82.43	358.88	7,268.00	324.44	-258.74	342.34	10.00	9.99	0.46	2.61
Codell										
7,600.00	89.15	359.18	7,272.94	391.51	-259.88	409.31	10.00	9.99	0.45	2.58
7,608.49	90.00	359.22	7,273.00	400.00	-260.00	417.79	10.00	9.99	0.45	2.56
End Build @ 7608.49ft - Codell TL (Heel) - 7" Intermediate Casing - Powers 29C-27HZ Casing Point										
7,700.00	90.00	359.22	7,273.00	491.50	-261.25	509.14	0.00	0.00	0.00	2.56
7,800.00	90.00	359.22	7,273.00	591.49	-262.62	608.97	0.00	0.00	0.00	0.00
7,900.00	90.00	359.22	7,273.00	691.48	-263.99	708.79	0.00	0.00	0.00	0.00
8,000.00	90.00	359.22	7,273.00	791.47	-265.35	808.62	0.00	0.00	0.00	0.00
8,100.00	90.00	359.22	7,273.00	891.46	-266.72	908.45	0.00	0.00	0.00	0.00
8,200.00	90.00	359.22	7,273.00	991.45	-268.09	1,008.27	0.00	0.00	0.00	0.00
8,300.00	90.00	359.22	7,273.00	1,091.45	-269.45	1,108.10	0.00	0.00	0.00	0.00
8,400.00	90.00	359.22	7,273.00	1,191.44	-270.82	1,207.93	0.00	0.00	0.00	0.00
8,500.00	90.00	359.22	7,273.00	1,291.43	-272.19	1,307.76	0.00	0.00	0.00	0.00
8,600.00	90.00	359.22	7,273.00	1,391.42	-273.55	1,407.58	0.00	0.00	0.00	0.00
8,700.00	90.00	359.22	7,273.00	1,491.41	-274.92	1,507.41	0.00	0.00	0.00	0.00

Plan Report for Powers 29C-27HZ - Plan A Rev 0 Permit

Measured Depth (ft)	Inclination (°)	Azimuth (°)	Vertical Depth (ft)	+N/-S (ft)	+E/-W (ft)	Vertical Section (ft)	Dogleg Rate (°/100ft)	Build Rate (°/100ft)	Turn Rate (°/100ft)	Toothface Azimuth (°)
8,800.00	90.00	359.22	7,273.00	1,591.40	-276.29	1,607.24	0.00	0.00	0.00	0.00
8,900.00	90.00	359.22	7,273.00	1,691.39	-277.66	1,707.06	0.00	0.00	0.00	0.00
9,000.00	90.00	359.22	7,273.00	1,791.38	-279.02	1,806.89	0.00	0.00	0.00	0.00
9,100.00	90.00	359.22	7,273.00	1,891.37	-280.39	1,906.72	0.00	0.00	0.00	0.00
9,200.00	90.00	359.22	7,273.00	1,991.36	-281.76	2,006.54	0.00	0.00	0.00	0.00
9,300.00	90.00	359.22	7,273.00	2,091.35	-283.12	2,106.37	0.00	0.00	0.00	0.00
9,400.00	90.00	359.22	7,273.00	2,191.34	-284.49	2,206.20	0.00	0.00	0.00	0.00
9,500.00	90.00	359.22	7,273.00	2,291.33	-285.86	2,306.02	0.00	0.00	0.00	0.00
9,600.00	90.00	359.22	7,273.00	2,391.32	-287.23	2,405.85	0.00	0.00	0.00	0.00
9,700.00	90.00	359.22	7,273.00	2,491.31	-288.59	2,505.68	0.00	0.00	0.00	0.00
9,800.00	90.00	359.22	7,273.00	2,591.31	-289.96	2,605.50	0.00	0.00	0.00	0.00
9,900.00	90.00	359.22	7,273.00	2,691.30	-291.33	2,705.33	0.00	0.00	0.00	0.00
10,000.00	90.00	359.22	7,273.00	2,791.29	-292.69	2,805.16	0.00	0.00	0.00	0.00
Hold Angle @ 90.00										
10,100.00	90.00	359.22	7,273.00	2,891.28	-294.06	2,904.98	0.00	0.00	0.00	0.00
10,200.00	90.00	359.22	7,273.00	2,991.27	-295.43	3,004.81	0.00	0.00	0.00	0.00
10,300.00	90.00	359.22	7,273.00	3,091.26	-296.80	3,104.64	0.00	0.00	0.00	0.00
10,400.00	90.00	359.22	7,273.00	3,191.25	-298.16	3,204.47	0.00	0.00	0.00	0.00
10,500.00	90.00	359.22	7,273.00	3,291.24	-299.53	3,304.29	0.00	0.00	0.00	0.00
10,600.00	90.00	359.22	7,273.00	3,391.23	-300.90	3,404.12	0.00	0.00	0.00	0.00
10,700.00	90.00	359.22	7,273.00	3,491.22	-302.26	3,503.95	0.00	0.00	0.00	0.00
10,800.00	90.00	359.22	7,273.00	3,591.21	-303.63	3,603.77	0.00	0.00	0.00	0.00
10,900.00	90.00	359.22	7,273.00	3,691.20	-305.00	3,703.60	0.00	0.00	0.00	0.00
11,000.00	90.00	359.22	7,273.00	3,791.19	-306.37	3,803.43	0.00	0.00	0.00	0.00
11,100.00	90.00	359.22	7,273.00	3,891.18	-307.73	3,903.25	0.00	0.00	0.00	0.00
11,200.00	90.00	359.22	7,273.00	3,991.17	-309.10	4,003.08	0.00	0.00	0.00	0.00
11,300.00	90.00	359.22	7,273.00	4,091.17	-310.47	4,102.91	0.00	0.00	0.00	0.00
11,400.00	90.00	359.22	7,273.00	4,191.16	-311.83	4,202.73	0.00	0.00	0.00	0.00
11,500.00	90.00	359.22	7,273.00	4,291.15	-313.20	4,302.56	0.00	0.00	0.00	0.00
11,524.28	90.00	359.22	7,273.00	4,315.42	-313.53	4,326.80	0.00	0.00	0.00	0.00
Total Depth @ 11524.28ft - Codell TL (Toe) - Powers 29C-27HZ_BHL										

Plan Annotations

Measured Depth (ft)	Vertical Depth (ft)	Local Coordinates		Comment
		+N/-S (ft)	+E/-W (ft)	
800.00	800.00	0.00	0.00	Hold Angle @ 0.00
1,500.00	1,500.00	0.00	0.00	Begin Nudge @ 1500.00ft
1,600.00	1,599.98	-1.06	-1.39	Nudge Rate = 2.00/100ft
1,659.27	1,659.19	-2.68	-3.52	End Nudge @ 1659.27ft
4,000.00	3,996.30	-81.58	-106.93	Hold Angle @ 3.19
6,689.52	6,681.67	-172.23	-225.74	Begin Build @ 6689.52ft
7,000.00	6,979.43	-100.16	-240.04	Build Rate = 10.00/100ft
7,608.49	7,273.00	400.00	-260.00	End Build @ 7608.49ft
10,000.00	7,273.00	2,791.29	-292.69	Hold Angle @ 90.00
11,524.28	7,273.00	4,315.42	-313.53	Total Depth @ 11524.28ft

Vertical Section Information

Angle Type	Target	Azimuth (°)	Origin Type	Origin		Start TVD (ft)
				+N/_S (ft)	+E/-W (ft)	
Target	Powers 29C-27HZ_BHL	355.84	Slot	0.00	0.00	7,273.00

Plan Report for Powers 29C-27HZ - Plan A Rev 0 Permit**Survey tool program**

From (ft)	To (ft)	Survey/Plan	Survey Tool
0.00	11,524.28	Plan A Rev 0 Permit	MWD

Casing Details

Measured Depth (ft)	Vertical Depth (ft)	Name	Casing Diameter (")	Hole Diameter (")
7,608.49	7,273.00	7" Intermediate Casing	7	8-3/4

Formation Details

Measured Depth (ft)	Vertical Depth (ft)	Name	Lithology	Dip (°)	Dip Direction (°)
1,406.00	1,406.00	Fox Hills		0.00	
5,121.43	5,116.00	Sussex		0.00	
6,980.21	6,962.00	Sharon Springs		0.00	
7,011.03	6,989.00	Niobrara A		0.00	
7,074.63	7,042.00	Niobrara B		0.00	
7,159.41	7,106.00	Niobrara C		0.00	
7,431.81	7,246.00	Fort Hays		0.00	
7,532.70	7,268.00	Codell		0.00	
7,608.49	7,273.00	Codell TL (Heel)		0.00	
11,524.28	7,273.00	Codell TL (Toe)		0.00	

Targets associated with this wellbore

Target Name	TVD (ft)	+N/-S (ft)	+E/-W (ft)	Shape
Powers 29C-27HZ_SHL	0.00	0.00	0.00	Point
Powers 29C-27HZ_BHL	7,273.00	4,315.43	-313.53	Point
Powers 29C-27HZ_Casing Point	7,273.00	400.00	-260.00	Point
Powers 29C-27HZ_Section Lines	0.00	0.00	0.00	Polygon
Powers 29C-27HZ_Setback Lines	0.00	0.00	0.00	Polygon

North Reference Sheet for Sec. 27-T2N-R65W - Powers 29C-27HZ - Plan A Rev 0

All data is in US Feet unless otherwise stated. Directions and Coordinates are relative to True North Reference.
 Vertical Depths are relative to RKB=17' @ 4966.00ft (Drilling Rig). Northing and Easting are relative to Powers 29C-27HZ
 Coordinate System is US State Plane 1983, Colorado Northern Zone using datum North American Datum 1983, ellipsoid GRS 1980
 Projection method is Lambert Conformal Conic (2 parallel)
 Central Meridian is -105.50°, Longitude Origin:0.000000°, Latitude Origin:40.783333°
 False Easting: 3,000,000.000644ft, False Northing: 1,000,000.001308ft, Scale Reduction: 0.99996012

Grid Coordinates of Well: 1,281,754.401149 ft N, 3,237,030.284652 ft E
 Geographical Coordinates of Well: 40° 06' 13.32" N, 104° 39' 09.45" W
 Grid Convergence at Surface is: 0.55°

Based upon Minimum Curvature type calculations, at a Measured Depth of 11,524.28ft
 the Bottom Hole Displacement is 4,326.80ft in the Direction of 355.84° (True).

Magnetic Convergence at surface is: -8.07° (2 August 2012, , BGGM2011)

