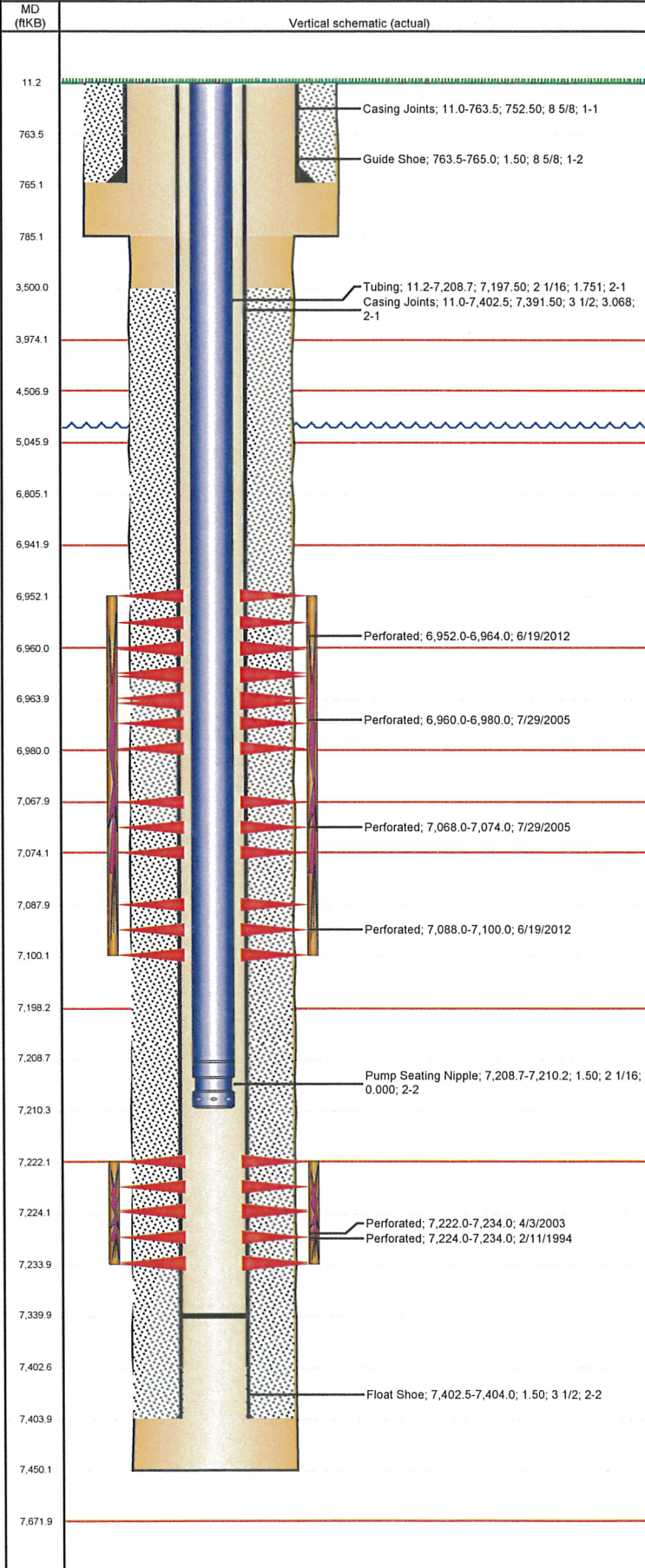


Well Name: ENDSLEY 32-01J5

VERTICAL - ORIGINAL HOLE, 10/30/2012 10:43:09 AM



Well Header

API 05-123-17932	Business Unit WATTENBERG	District 15	Well Config VERTICAL
Original KB Elevation (ft) 4,898.00	KB - GL / MSL (ftKB) 11.00	Spud Date 2/3/1994	P & A Date

Comment
LOCATION CHANGE NOT NOTED ON LOGS (4885' GE).

Directions To Well
RD 28 & 41, S 2/10, W THROUGH GATE, N 1/10, N/W INTO.

Current PBTD (ftKB)
ORIGINAL HOLE - 7,340.0

Surface Location (Congressional)

Quarter 1	Quarter 2	Quarter 3	Quarter 4	Section	Township	Twnshp N...	Range	Rng E/W Dir
		NE	NE	32	3	N	65	W

Bottom Hole Location

North-South Distance (ft)	From N or S Line	East-West Distance (ft)	From E or W Line
---------------------------	------------------	-------------------------	------------------

Plug Back Total Depths

Date	Depth (ftKB)	Method	Com
2/7/1994	7,360.0	CASING TALLY	FLOAT COLLAR
2/11/1994	7,338.0	CASED HOLE LOG	DEPTH LOGGER

Wellbore Sections

Section Des	Size (in)	Act Top (ftKB)	Act Btm (ftKB)
SURFACE	12 1/4	11.0	785.0
PRODUCTION	7 7/8	785.0	7,450.0

Zone Statuses

Zone Name	Status Date	Status	Job
NIOBRARA	8/23/2005	PR	RECOMPLETION, 7/27/2005 00:00
NIOBRARA	6/29/2012	PR	RE-FRAC, 6/14/2012 06:00
NIOBRARA	7/11/2012	PR	RE-FRAC, 6/14/2012 06:00
CODELL	3/3/1994	PR	DRILLING/COMPLETION - ORIGINAL, 2/3/1994 00:00
CODELL	4/10/2003	PR	RE-FRAC, 4/1/2003 00:00
CODELL	6/14/2012	SI	RE-FRAC, 6/14/2012 06:00
CODELL	7/11/2012	PR	RE-FRAC, 6/14/2012 06:00

Casing Strings

Csg Des	Run Date	OD (in)	Wt/Len (lb/ft)	Grade	Top (ftKB)	Set Depth (ftKB)
Surface Casing	2/3/1994	8 5/8	23.00	M-50	11.0	765.0
Production	2/7/1994	3 1/2	7.70	M-75	11.0	7,404.0

Cement

Des	Top (ftKB)	Btm (ftKB)
SURFACE CASING CEMENT	11.0	765.0
PRODUCTION CASING CEMENT	3,500.0	7,404.0

Tubing Components

Item Des	OD (in)	Wt (lb/ft)	Grade	Jts	Len (ft)
Tubing	2 1/16	3.25	J-55	223	7,197.50
Pump Seating Nipple	2 1/16	3.25	N-80	1	1.50

Perforation Data

Zone	Bnch/St g	Entered Shot Total	Top (ftKB)	Btm (ftKB)	Date
NIOBRARA, ORIGINAL HOLE	A	48	6,952.0	6,964.0	6/19/2012
NIOBRARA, ORIGINAL HOLE	A	36	6,960.0	6,980.0	7/29/2005
NIOBRARA, ORIGINAL HOLE	B	120	7,068.0	7,074.0	7/29/2005
NIOBRARA, ORIGINAL HOLE	B	48	7,088.0	7,100.0	6/19/2012
CODELL, ORIGINAL HOLE		48	7,222.0	7,234.0	4/3/2003
CODELL, ORIGINAL HOLE		20	7,224.0	7,234.0	2/11/1994

Stimulations & Treatments

Bnch/Stg	Date	Zone	Primary Job Type
	2/15/1994	CODELL, ORIGINAL HOLE	DRILLING/COMPLETION - ORIGINAL

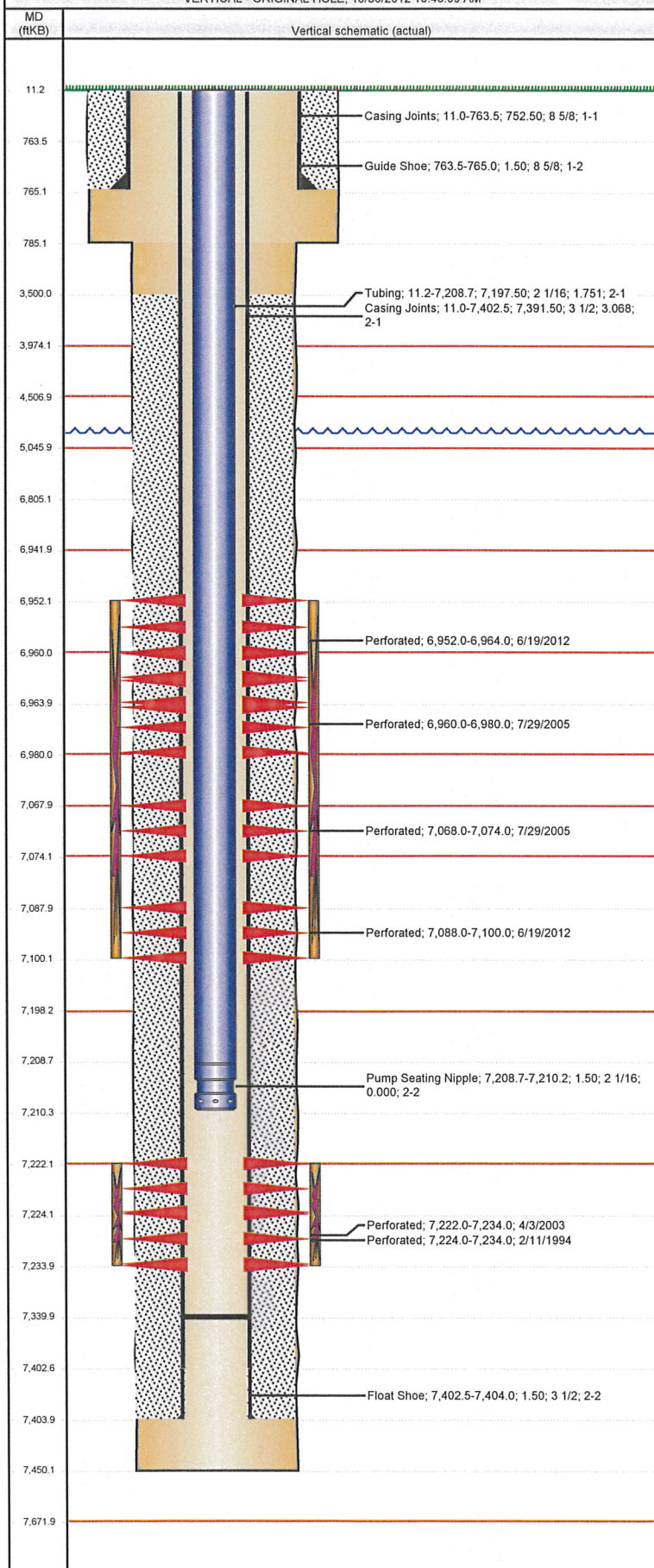
Comment

Total Add Amount Proppant Bulk Sand 194400 lb	Total Clean Volume...	Vol Slurry Tot (gal) 45654.00	Vol Gas Tot (MCF)
--	-----------------------	----------------------------------	-------------------

Avg Treat Pressure (psi) 4,610.0	Max Treat Pressure (psi) 5,000.0	Avg Treat Rate (bbl/min) 22.00	Max Treat Rate (bbl/min)
-------------------------------------	-------------------------------------	-----------------------------------	--------------------------

Well Name: ENDSLEY 32-01J5

VERTICAL - ORIGINAL HOLE, 10/30/2012 10:43:09 AM



Stimulations & Treatments

Bnch/Stg	Date	Zone	Primary Job Type	
	4/9/2003	CODELL, ORIGINAL HOLE	RE-FRAC	
Comment				
Total Add Amount		Total Clean Volume...	Vol Slurry Tot (gal)	Vol Gas Tot (MCF)
Proppant Ottawa 245960 lb			130410.00	
Avg Treat Pressure (psi)	Max Treat Pressure (psi)	Avg Treat Rate (bbl/min)	Max Treat Rate (bbl/min)	
4,000.0	4,324.0	13.90	14.40	
Bnch/Stg	Date	Zone	Primary Job Type	
	8/16/2005	NIOBRARA, ORIGINAL HOLE	RECOMPLETION	
Comment				
Total Add Amount		Total Clean Volume...	Vol Slurry Tot (gal)	Vol Gas Tot (MCF)
Proppant Ottawa 257860 lb			181902.01	
Avg Treat Pressure (psi)	Max Treat Pressure (psi)	Avg Treat Rate (bbl/min)	Max Treat Rate (bbl/min)	
5,702.0	6,232.0	31.80	38.00	
Bnch/Stg	Date	Zone	Primary Job Type	
	6/26/2012	NIOBRARA, ORIGINAL HOLE	RE-FRAC	
Comment				
Total Add Amount		Total Clean Volume...	Vol Slurry Tot (gal)	Vol Gas Tot (MCF)
Proppant Ottawa 250263.3 lb		150134.46	161485.38	
Avg Treat Pressure (psi)	Max Treat Pressure (psi)	Avg Treat Rate (bbl/min)	Max Treat Rate (bbl/min)	
5,544.0	6,335.0	34.00	40.30	

Other In Hole

Run Date	Des	OD (in)	Top (ftKB)	Btm (ftKB)

Logs

Date	Type	Top (ftKB)	Btm (ftKB)
2/8/1994	COMPENSATED DENSITY	764.0	6,130.0
2/8/1994	INDUCTION	764.0	6,130.0
2/11/1994	CBL/CCL/GR	3,200.0	7,334.0