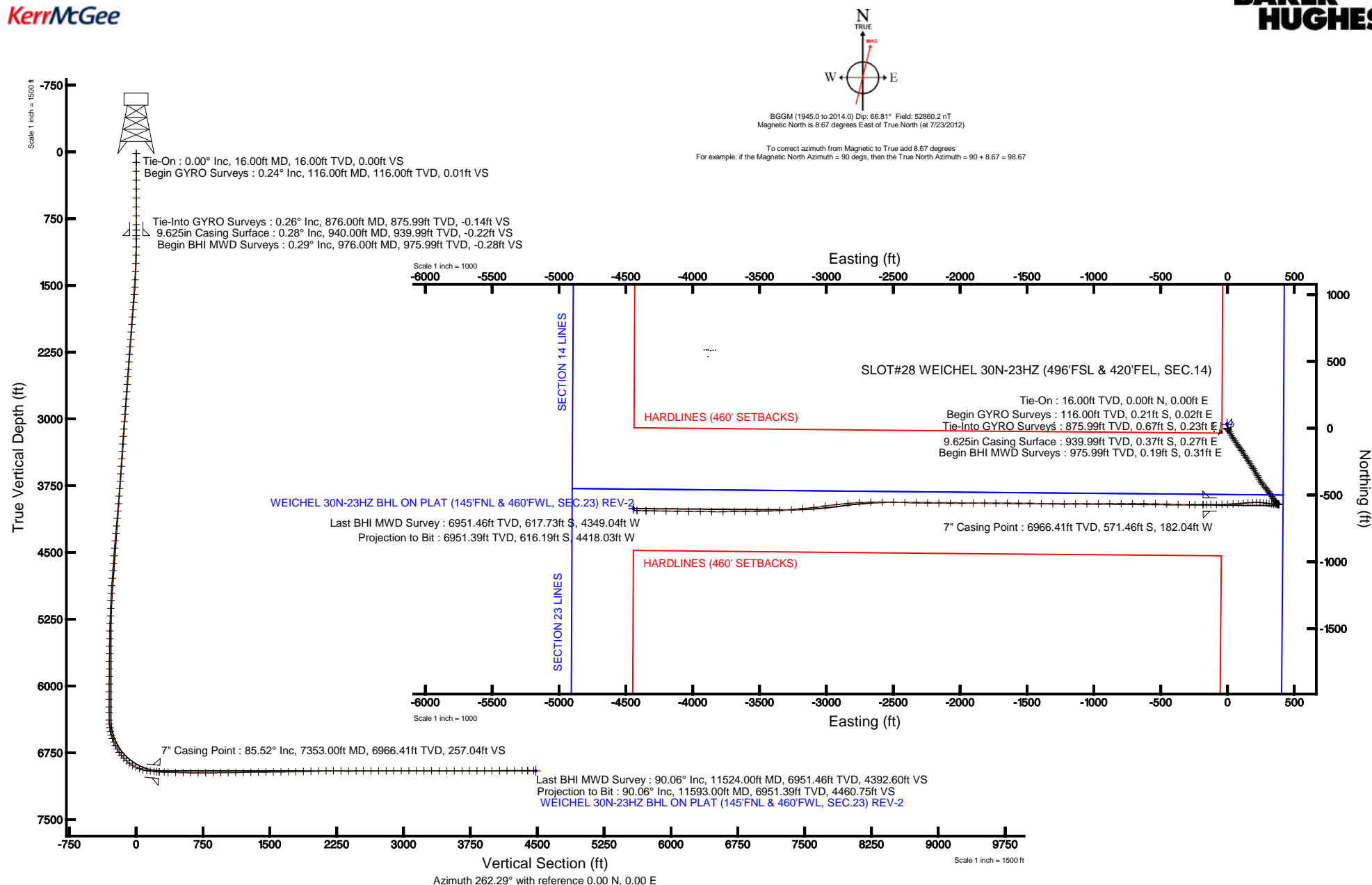


Location:	COLORADO	Slot:	SLOT#28 WEICHEL 30N-23HZ (496'FSL & 420'FEL, SEC.14)
Field:	WELD COUNTY (KERR MCGEE)	Well:	WEICHEL 30N-23HZ
Facility:	SEC.14-T2N-R65W	Wellbore:	WEICHEL 30N-23HZ PWB

Plot reference wellpath is WEICHEL 30N-23HZ (REV.C.0) FWP	
True vertical depths are referenced to XTREME 20 (RKB)	Grid System: NAD83 / Lambert Colorado SP, Northern Zone (501), US feet
Measured depths are referenced to XTREME 20 (RKB)	North Reference: True north
XTREME 20 (RKB) to Mean Sea Level: 4895 feet	Scale: True distance
Mean Sea Level to Mud line (At Slot: SLOT#28 WEICHEL 30N-23HZ (496FSL & 420FEL, SEC.14)): 0 feet	Depths are in feet
Coordinates are in feet referenced to Slot	Created by: wilisef02 on 8/15/2012





Actual Wellpath Report

WEICHEL 30N-23HZ AWP

Page 1 of 7



REFERENCE WELLPATH IDENTIFICATION

Operator	KERR-MCGEE OIL & GAS ONSHORE LP	Slot	SLOT#28 WEICHEL 30N-23HZ (496'FSL & 420'FEL, SEC.14)
Area	COLORADO	Well	WEICHEL 30N-23HZ
Field	WELD COUNTY (KERR MCGEE)	Wellbore	WEICHEL 30N-23HZ AWB
Facility	SEC.14-T2N-R65W		

REPORT SETUP INFORMATION

Projection System	NAD83 / Lambert Colorado SP, Northern Zone (501), US feet	Software System	WellArchitect@ 3.0.2
North Reference	True	User	Wilsjef02
Scale	0.999959	Report Generated	8/15/2012 at 15:52:54
Convergence at slot	0.57° East	Database/Source file	WellArchitectDB/WEICHEL_30N-23HZ_AWB.xml

WELLPATH LOCATION

	Local coordinates		Grid coordinates		Geographic coordinates	
	North[ft]	East[ft]	Easting[US ft]	Northing[US ft]	Latitude	Longitude
Slot Location	-4175.39	2870.03	3245183.28	1292368.76	40°07'57.425"N	104°37'23.182"W
Facility Reference Pt			3242272.71	1296515.72	40°08'38.688"N	104°38'00.132"W
Field Reference Pt			3197771.84	1268891.29	40°04'09.600"N	104°47'36.000"W

WELLPATH DATUM

Calculation method	Minimum curvature	XTREME 20 (RKB) to Facility Vertical Datum	4895.00ft
Horizontal Reference Pt	Slot	XTREME 20 (RKB) to Mean Sea Level	4895.00ft
Vertical Reference Pt	XTREME 20 (RKB)	XTREME 20 (RKB) to Mud Line at Slot (SLOT#28 WEICHEL 30N-23HZ (496'FSL & 420'FEL, SEC.14))	4895.00ft
MD Reference Pt	XTREME 20 (RKB)	Section Origin	N 0.00, E 0.00 ft
Field Vertical Reference	Mean Sea Level	Section Azimuth	262.06°



Actual Wellpath Report

WEICHEL 30N-23HZ AWP

Page 2 of 7



REFERENCE WELLPATH IDENTIFICATION

Operator	KERR-MCGEE OIL & GAS ONSHORE LP	Slot	SLOT#28 WEICHEL 30N-23HZ (496'FSL & 420'FEL, SEC.14)
Area	COLORADO	Well	WEICHEL 30N-23HZ
Field	WELD COUNTY (KERR MCGEE)	Wellbore	WEICHEL 30N-23HZ AWB
Facility	SEC.14-T2N-R65W		

WELLPATH DATA (149 stations) † = interpolated/extrapolated station

MD [ft]	Inclination [°]	Azimuth [°]	TVD [ft]	Vert Sect [ft]	North [ft]	East [ft]	Latitude	Longitude	DLS [°/100ft]	Comments
0.00†	0.000	174.230	0.00	0.00	0.00	0.00	40°07'57.425"N	104°37'23.182"W	0.00	
16.00	0.000	174.230	16.00	0.00	0.00	0.00	40°07'57.425"N	104°37'23.182"W	0.00	Tie-On
116.00	0.240	174.230	116.00	0.01	-0.21	0.02	40°07'57.423"N	104°37'23.181"W	0.24	Begin GYRO Surveys
216.00	0.430	182.010	216.00	0.08	-0.79	0.03	40°07'57.417"N	104°37'23.181"W	0.19	
316.00	0.210	216.160	316.00	0.27	-1.31	-0.09	40°07'57.412"N	104°37'23.183"W	0.28	
416.00	0.070	140.200	416.00	0.37	-1.51	-0.16	40°07'57.410"N	104°37'23.184"W	0.20	
516.00	0.070	321.190	516.00	0.37	-1.51	-0.16	40°07'57.410"N	104°37'23.184"W	0.14	
616.00	0.160	66.250	616.00	0.26	-1.41	-0.07	40°07'57.411"N	104°37'23.183"W	0.19	
716.00	0.180	51.810	716.00	-0.01	-1.25	0.18	40°07'57.412"N	104°37'23.179"W	0.05	
816.00	0.260	346.270	815.99	-0.12	-0.93	0.25	40°07'57.416"N	104°37'23.178"W	0.25	
876.00	0.260	6.130	875.99	-0.14	-0.67	0.23	40°07'57.418"N	104°37'23.179"W	0.15	Tie-Into GYRO Surveys
976.00	0.290	11.840	975.99	-0.28	-0.19	0.31	40°07'57.423"N	104°37'23.178"W	0.04	Begin BHI MWD Surveys
1067.00	1.120	134.700	1066.99	-0.90	-0.59	0.99	40°07'57.419"N	104°37'23.169"W	1.43	
1159.00	2.930	151.010	1158.93	-2.29	-3.28	2.77	40°07'57.392"N	104°37'23.146"W	2.05	
1251.00	4.400	155.060	1250.74	-4.16	-8.54	5.39	40°07'57.340"N	104°37'23.112"W	1.62	
1343.00	6.200	153.290	1342.34	-6.79	-16.18	9.12	40°07'57.265"N	104°37'23.064"W	1.96	
1435.00	8.460	150.660	1433.58	-10.86	-26.52	14.67	40°07'57.163"N	104°37'22.993"W	2.48	
1522.00	9.910	150.390	1519.46	-15.96	-38.61	21.50	40°07'57.043"N	104°37'22.905"W	1.67	
1607.00	10.450	150.490	1603.13	-21.50	-51.67	28.91	40°07'56.914"N	104°37'22.809"W	0.64	
1693.00	11.610	146.890	1687.54	-28.04	-65.71	37.48	40°07'56.775"N	104°37'22.699"W	1.57	
1778.00	11.360	146.970	1770.83	-35.23	-79.89	46.72	40°07'56.635"N	104°37'22.580"W	0.29	
1863.00	11.050	147.390	1854.21	-42.18	-93.77	55.67	40°07'56.498"N	104°37'22.465"W	0.38	
1948.00	10.580	147.170	1937.70	-48.87	-107.19	64.29	40°07'56.366"N	104°37'22.354"W	0.56	
2034.00	9.990	145.000	2022.32	-55.58	-119.94	72.85	40°07'56.240"N	104°37'22.244"W	0.82	
2119.00	9.760	145.510	2106.06	-62.16	-131.91	81.16	40°07'56.121"N	104°37'22.137"W	0.29	
2204.00	9.690	144.590	2189.84	-68.68	-143.68	89.38	40°07'56.005"N	104°37'22.031"W	0.20	
2289.00	8.960	141.520	2273.72	-75.34	-154.69	97.65	40°07'55.896"N	104°37'21.924"W	1.04	
2374.00	9.660	142.880	2357.60	-82.18	-165.56	106.07	40°07'55.789"N	104°37'21.816"W	0.86	
2460.00	10.240	145.250	2442.30	-89.15	-177.60	114.78	40°07'55.670"N	104°37'21.704"W	0.83	
2545.00	10.130	152.830	2525.97	-95.02	-190.46	122.50	40°07'55.543"N	104°37'21.604"W	1.58	
2630.00	10.130	146.770	2609.65	-100.67	-203.36	130.01	40°07'55.415"N	104°37'21.508"W	1.25	
2715.00	10.120	146.100	2693.32	-107.14	-215.81	138.27	40°07'55.292"N	104°37'21.401"W	0.14	
2800.00	9.170	144.480	2777.12	-113.54	-227.52	146.37	40°07'55.176"N	104°37'21.297"W	1.16	
2886.00	9.320	148.510	2862.00	-119.50	-239.04	153.99	40°07'55.063"N	104°37'21.199"W	0.77	
2971.00	10.530	148.460	2945.73	-125.35	-251.53	161.65	40°07'54.939"N	104°37'21.100"W	1.42	
3056.00	10.720	147.650	3029.27	-131.73	-264.82	169.94	40°07'54.808"N	104°37'20.994"W	0.28	
3141.00	10.320	144.460	3112.85	-138.53	-277.70	178.60	40°07'54.681"N	104°37'20.882"W	0.83	
3226.00	9.400	149.040	3196.59	-144.77	-289.85	186.59	40°07'54.561"N	104°37'20.779"W	1.42	
3311.00	9.890	149.550	3280.39	-150.28	-302.09	193.86	40°07'54.439"N	104°37'20.686"W	0.59	
3397.00	10.530	151.530	3365.03	-155.86	-315.37	201.35	40°07'54.308"N	104°37'20.589"W	0.85	
3482.00	10.260	150.860	3448.63	-161.32	-328.81	208.74	40°07'54.176"N	104°37'20.494"W	0.35	
3566.00	9.990	147.190	3531.32	-167.09	-341.46	216.33	40°07'54.050"N	104°37'20.396"W	0.83	
3652.00	10.560	150.170	3615.94	-173.17	-354.57	224.30	40°07'53.921"N	104°37'20.294"W	0.91	
3737.00	11.320	152.190	3699.40	-178.91	-368.71	232.06	40°07'53.781"N	104°37'20.194"W	1.00	
3822.00	9.980	151.380	3782.93	-184.34	-382.55	239.48	40°07'53.644"N	104°37'20.098"W	1.59	



Actual Wellpath Report

WEICHEL 30N-23HZ AWP

Page 3 of 7



REFERENCE WELLPATH IDENTIFICATION

Operator	KERR-MCGEE OIL & GAS ONSHORE LP	Slot	SLOT#28 WEICHEL 30N-23HZ (496'FSL & 420'FEL, SEC.14)
Area	COLORADO	Well	WEICHEL 30N-23HZ
Field	WELD COUNTY (KERR MCGEE)	Wellbore	WEICHEL 30N-23HZ AWB
Facility	SEC.14-T2N-R65W		

WELLPATH DATA (149 stations)

MD [ft]	Inclination [°]	Azimuth [°]	TVD [ft]	Vert Sect [ft]	North [ft]	East [ft]	Latitude	Longitude	DLS [°/100ft]	Comments
3907.00	9.810	145.900	3866.67	-190.14	-395.01	247.07	40°07'53.521"N	104°37'20.001"W	1.13	
3993.00	10.870	145.250	3951.27	-197.02	-407.74	255.80	40°07'53.395"N	104°37'19.888"W	1.24	
4078.00	10.700	142.310	4034.77	-204.56	-420.57	265.19	40°07'53.269"N	104°37'19.767"W	0.68	
4163.00	10.570	143.160	4118.31	-212.24	-433.06	274.69	40°07'53.145"N	104°37'19.645"W	0.24	
4248.00	9.770	141.310	4201.98	-219.69	-444.92	283.87	40°07'53.028"N	104°37'19.527"W	1.02	
4333.00	8.950	138.820	4285.84	-227.01	-455.53	292.74	40°07'52.923"N	104°37'19.413"W	1.08	
4418.00	9.180	138.450	4369.78	-234.38	-465.58	301.59	40°07'52.824"N	104°37'19.299"W	0.28	
4503.00	9.590	142.440	4453.65	-241.64	-476.27	310.40	40°07'52.718"N	104°37'19.185"W	0.90	
4589.00	9.070	147.480	4538.51	-248.00	-487.66	318.41	40°07'52.606"N	104°37'19.082"W	1.13	
4674.00	9.640	147.330	4622.38	-253.76	-499.30	325.85	40°07'52.491"N	104°37'18.986"W	0.67	
4759.00	10.650	147.330	4706.05	-260.02	-511.91	333.94	40°07'52.366"N	104°37'18.882"W	1.19	
4844.00	9.600	146.580	4789.72	-266.36	-524.43	342.08	40°07'52.242"N	104°37'18.778"W	1.24	
4929.00	8.070	145.000	4873.71	-272.12	-535.24	349.41	40°07'52.136"N	104°37'18.683"W	1.82	
5014.00	6.310	142.430	4958.04	-277.15	-543.83	355.68	40°07'52.051"N	104°37'18.603"W	2.10	
5100.00	5.120	142.600	5043.61	-281.37	-550.62	360.89	40°07'51.983"N	104°37'18.535"W	1.38	
5185.00	4.750	138.940	5128.30	-285.16	-556.29	365.51	40°07'51.927"N	104°37'18.476"W	0.57	
5270.00	3.970	136.850	5213.05	-288.78	-561.09	369.83	40°07'51.880"N	104°37'18.420"W	0.94	
5355.00	2.780	134.490	5297.90	-291.73	-564.68	373.31	40°07'51.845"N	104°37'18.375"W	1.41	
5440.00	2.290	134.980	5382.82	-294.01	-567.33	375.98	40°07'51.818"N	104°37'18.341"W	0.58	
5526.00	1.550	142.460	5468.77	-295.62	-569.46	377.91	40°07'51.797"N	104°37'18.316"W	0.91	
5611.00	0.980	118.710	5553.75	-296.77	-570.72	379.25	40°07'51.785"N	104°37'18.299"W	0.90	
5696.00	0.890	86.730	5638.74	-298.02	-571.03	380.54	40°07'51.782"N	104°37'18.282"W	0.61	
5781.00	0.630	96.940	5723.73	-299.12	-571.05	381.67	40°07'51.782"N	104°37'18.268"W	0.34	
5867.00	0.530	106.610	5809.73	-299.94	-571.22	382.52	40°07'51.780"N	104°37'18.257"W	0.16	
5952.00	0.610	86.810	5894.72	-300.75	-571.31	383.34	40°07'51.779"N	104°37'18.246"W	0.25	
6037.00	0.470	30.090	5979.72	-301.42	-570.98	383.97	40°07'51.782"N	104°37'18.238"W	0.62	
6123.00	0.090	240.470	6065.72	-301.57	-570.71	384.09	40°07'51.785"N	104°37'18.237"W	0.64	
6208.00	0.180	123.240	6150.72	-301.61	-570.82	384.14	40°07'51.784"N	104°37'18.236"W	0.28	
6293.00	0.630	77.280	6235.72	-302.18	-570.79	384.71	40°07'51.784"N	104°37'18.229"W	0.61	
6359.00	0.810	60.890	6301.71	-302.97	-570.48	385.47	40°07'51.787"N	104°37'18.219"W	0.41	
6443.00	1.880	275.290	6385.70	-302.19	-570.07	384.62	40°07'51.791"N	104°37'18.230"W	3.08	
6486.00	6.680	268.640	6428.57	-299.01	-570.06	381.41	40°07'51.791"N	104°37'18.271"W	11.20	
6528.00	7.430	274.700	6470.25	-293.94	-569.90	376.27	40°07'51.793"N	104°37'18.337"W	2.51	
6571.00	11.940	271.360	6512.62	-286.83	-569.56	369.04	40°07'51.796"N	104°37'18.430"W	10.57	
6613.00	15.520	271.400	6553.42	-276.99	-569.32	359.08	40°07'51.799"N	104°37'18.559"W	8.52	
6655.00	20.270	273.560	6593.37	-264.31	-568.73	346.19	40°07'51.805"N	104°37'18.725"W	11.42	
6698.00	22.330	277.600	6633.44	-249.14	-567.19	330.66	40°07'51.820"N	104°37'18.925"W	5.88	
6741.00	26.750	279.240	6672.54	-232.02	-564.55	313.00	40°07'51.846"N	104°37'19.152"W	10.40	
6784.00	30.210	277.550	6710.34	-212.34	-561.58	292.72	40°07'51.875"N	104°37'19.413"W	8.26	
6827.00	34.310	276.750	6746.69	-190.18	-558.73	269.95	40°07'51.903"N	104°37'19.706"W	9.59	
6869.00	38.430	274.170	6780.50	-165.96	-556.39	245.17	40°07'51.926"N	104°37'20.025"W	10.46	
6912.00	43.440	269.250	6812.99	-138.20	-555.61	217.03	40°07'51.934"N	104°37'20.387"W	13.85	
6954.00	47.800	267.260	6842.36	-108.37	-556.54	187.04	40°07'51.925"N	104°37'20.774"W	10.92	
6997.00	53.620	265.110	6869.58	-75.19	-558.78	153.85	40°07'51.903"N	104°37'21.201"W	14.08	
7039.00	58.620	265.490	6892.98	-40.39	-561.64	119.11	40°07'51.875"N	104°37'21.648"W	11.93	



Actual Wellpath Report

WEICHEL 30N-23HZ AWP

Page 4 of 7



REFERENCE WELLPATH IDENTIFICATION

Operator	KERR-MCGEE OIL & GAS ONSHORE LP	Slot	SLOT#28 WEICHEL 30N-23HZ (496'FSL & 420'FEL, SEC.14)
Area	COLORADO	Well	WEICHEL 30N-23HZ
Field	WELD COUNTY (KERR MCGEE)	Wellbore	WEICHEL 30N-23HZ AWB
Facility	SEC.14-T2N-R65W		

WELLPATH DATA (149 stations) † = interpolated/extrapolated station

MD [ft]	Inclination [°]	Azimuth [°]	TVD [ft]	Vert Sect [ft]	North [ft]	East [ft]	Latitude	Longitude	DLS [°/100ft]	Comments
7082.00	63.960	265.600	6913.63	-2.76	-564.56	81.52	40°07'51.846"N	104°37'22.132"W	12.42	
7125.00	69.060	266.230	6930.76	36.58	-567.37	42.20	40°07'51.818"N	104°37'22.638"W	11.94	
7168.00	75.340	267.480	6943.90	77.35	-569.60	1.34	40°07'51.796"N	104°37'23.164"W	14.86	
7210.00	81.340	268.920	6952.39	118.23	-570.89	-39.75	40°07'51.783"N	104°37'23.693"W	14.67	
7253.00	84.940	270.090	6957.52	160.55	-571.26	-82.44	40°07'51.780"N	104°37'24.243"W	8.80	
7295.00	85.000	270.450	6961.21	201.96	-571.06	-124.27	40°07'51.782"N	104°37'24.782"W	0.87	
7325.00	84.450	269.270	6963.96	231.56	-571.13	-154.15	40°07'51.781"N	104°37'25.166"W	4.32	
7353.00†	85.522	269.373	6966.41	259.23	-571.46	-182.04	40°07'51.778"N	104°37'25.525"W	3.85	7" Casing Point
7412.00	87.780	269.590	6969.86	317.63	-572.00	-240.93	40°07'51.772"N	104°37'26.283"W	3.85	
7455.00	88.240	270.790	6971.35	360.17	-571.85	-283.90	40°07'51.774"N	104°37'26.837"W	2.99	
7540.00	88.830	271.310	6973.52	444.10	-570.30	-368.86	40°07'51.789"N	104°37'27.930"W	0.93	
7625.00	88.650	271.040	6975.39	528.01	-568.55	-453.82	40°07'51.806"N	104°37'29.024"W	0.38	
7710.00	89.720	271.220	6976.60	611.93	-566.88	-538.79	40°07'51.823"N	104°37'30.118"W	1.28	
7796.00	90.060	271.010	6976.77	696.86	-565.20	-624.78	40°07'51.839"N	104°37'31.225"W	0.46	
7881.00	90.090	269.690	6976.66	780.97	-564.68	-709.77	40°07'51.844"N	104°37'32.319"W	1.55	
7966.00	90.120	269.840	6976.50	865.20	-565.03	-794.77	40°07'51.841"N	104°37'33.414"W	0.18	
8051.00	90.120	269.620	6976.32	949.44	-565.43	-879.77	40°07'51.837"N	104°37'34.508"W	0.26	
8136.00	90.580	269.590	6975.80	1033.71	-566.02	-964.77	40°07'51.831"N	104°37'35.602"W	0.54	
8222.00	90.830	269.540	6974.74	1118.96	-566.67	-1050.76	40°07'51.825"N	104°37'36.709"W	0.30	
8307.00	91.190	269.690	6973.25	1203.21	-567.24	-1135.74	40°07'51.819"N	104°37'37.803"W	0.46	
8392.00	91.320	269.760	6971.38	1287.43	-567.65	-1220.72	40°07'51.815"N	104°37'38.898"W	0.17	
8477.00	90.640	270.910	6969.93	1371.53	-567.15	-1305.71	40°07'51.820"N	104°37'39.992"W	1.57	
8563.00	90.710	271.070	6968.92	1456.48	-565.67	-1391.69	40°07'51.834"N	104°37'41.099"W	0.20	
8648.00	90.790	271.080	6967.81	1540.43	-564.07	-1476.67	40°07'51.850"N	104°37'42.193"W	0.09	
8733.00	90.360	270.570	6966.95	1624.43	-562.85	-1561.65	40°07'51.862"N	104°37'43.287"W	0.78	
8818.00	90.860	270.480	6966.05	1708.50	-562.07	-1646.64	40°07'51.870"N	104°37'44.381"W	0.60	
8903.00	91.570	270.420	6964.24	1792.57	-561.40	-1731.62	40°07'51.876"N	104°37'45.475"W	0.84	
8988.00	92.150	270.350	6961.49	1876.63	-560.83	-1816.57	40°07'51.882"N	104°37'46.569"W	0.69	
9074.00	91.100	269.770	6959.05	1961.76	-560.74	-1902.54	40°07'51.883"N	104°37'47.675"W	1.39	
9159.00	91.540	269.770	6957.09	2045.97	-561.08	-1987.51	40°07'51.879"N	104°37'48.769"W	0.52	
9244.00	90.700	270.190	6955.43	2130.14	-561.11	-2072.50	40°07'51.879"N	104°37'49.864"W	1.10	
9329.00	89.350	270.350	6955.39	2214.26	-560.71	-2157.49	40°07'51.883"N	104°37'50.958"W	1.60	
9414.00	89.540	270.470	6956.21	2298.36	-560.11	-2242.49	40°07'51.889"N	104°37'52.052"W	0.26	
9499.00	89.940	271.340	6956.60	2382.35	-558.76	-2327.48	40°07'51.902"N	104°37'53.146"W	1.13	
9585.00	90.740	272.120	6956.09	2467.12	-556.17	-2413.43	40°07'51.928"N	104°37'54.253"W	1.30	
9670.00	90.030	271.150	6955.52	2550.93	-553.74	-2498.40	40°07'51.951"N	104°37'55.347"W	1.41	
9755.00	89.870	269.990	6955.59	2635.00	-552.90	-2583.39	40°07'51.960"N	104°37'56.441"W	1.38	
9840.00	90.120	268.790	6955.60	2719.30	-553.80	-2668.38	40°07'51.951"N	104°37'57.535"W	1.44	
9926.00	90.150	266.760	6955.40	2804.87	-557.14	-2754.31	40°07'51.918"N	104°37'58.641"W	2.36	
10011.00	89.870	265.170	6955.38	2889.67	-563.12	-2839.10	40°07'51.858"N	104°37'59.733"W	1.90	
10096.00	90.090	263.120	6955.41	2974.61	-571.79	-2923.65	40°07'51.773"N	104°38'00.822"W	2.43	
10182.00	89.900	262.540	6955.42	3060.60	-582.52	-3008.98	40°07'51.666"N	104°38'01.920"W	0.71	
10267.00	90.790	263.060	6954.91	3145.59	-593.18	-3093.31	40°07'51.561"N	104°38'03.006"W	1.21	
10352.00	90.330	265.120	6954.08	3230.53	-601.93	-3177.85	40°07'51.474"N	104°38'04.094"W	2.48	
10437.00	89.780	264.630	6954.00	3315.42	-609.52	-3262.50	40°07'51.399"N	104°38'05.184"W	0.87	



Actual Wellpath Report

WEICHEL 30N-23HZ AWP

Page 5 of 7



REFERENCE WELLPATH IDENTIFICATION

Operator	KERR-MCGEE OIL & GAS ONSHORE LP	Slot	SLOT#28 WEICHEL 30N-23HZ (496'FSL & 420'FEL, SEC.14)
Area	COLORADO	Well	WEICHEL 30N-23HZ
Field	WELD COUNTY (KERR MCGEE)	Wellbore	WEICHEL 30N-23HZ AWB
Facility	SEC.14-T2N-R65W		

WELLPATH DATA (149 stations)

MD [ft]	Inclination [°]	Azimuth [°]	TVD [ft]	Vert Sect [ft]	North [ft]	East [ft]	Latitude	Longitude	DLS [°/100ft]	Comments
10523.00	89.750	266.610	6954.35	3401.25	-616.09	-3348.25	40°07'51.334"N	104°38'06.288"W	2.30	
10608.00	89.590	267.770	6954.84	3485.91	-620.26	-3433.14	40°07'51.293"N	104°38'07.381"W	1.38	
10693.00	90.210	269.350	6954.99	3570.36	-622.39	-3518.11	40°07'51.272"N	104°38'08.475"W	2.00	
10779.00	90.330	269.470	6954.58	3655.65	-623.28	-3604.11	40°07'51.263"N	104°38'09.582"W	0.20	
10864.00	90.270	269.650	6954.14	3739.92	-623.93	-3689.10	40°07'51.256"N	104°38'10.676"W	0.22	
10949.00	89.940	269.690	6953.98	3824.18	-624.42	-3774.10	40°07'51.251"N	104°38'11.770"W	0.39	
11034.00	90.030	270.420	6954.00	3908.35	-624.34	-3859.10	40°07'51.252"N	104°38'12.865"W	0.87	
11119.00	89.870	270.440	6954.08	3992.44	-623.70	-3944.10	40°07'51.258"N	104°38'13.959"W	0.19	
11205.00	90.580	270.790	6953.74	4077.49	-622.78	-4030.09	40°07'51.267"N	104°38'15.066"W	0.92	
11290.00	90.550	270.780	6952.90	4161.50	-621.61	-4115.08	40°07'51.279"N	104°38'16.160"W	0.04	
11375.00	90.460	270.900	6952.15	4245.50	-620.37	-4200.07	40°07'51.291"N	104°38'17.254"W	0.18	
11461.00	90.240	270.970	6951.63	4330.47	-618.96	-4286.06	40°07'51.304"N	104°38'18.361"W	0.27	
11524.00	90.060	271.280	6951.46	4392.68	-617.73	-4349.04	40°07'51.317"N	104°38'19.172"W	0.57	Last BHI MWD Survey
11593.00	90.060	271.280	6951.39	4460.79	-616.19	-4418.03	40°07'51.332"N	104°38'20.060"W	0.00	Projection to Bit

HOLE & CASING SECTIONS - Ref Wellbore: WEICHEL 30N-23HZ AWB Ref Wellpath: WEICHEL 30N-23HZ AWP

String/Diameter	Start MD [ft]	End MD [ft]	Interval [ft]	Start TVD [ft]	End TVD [ft]	Start N/S [ft]	Start E/W [ft]	End N/S [ft]	End E/W [ft]
12.25in Open Hole	16.00	940.00	924.00	16.00	939.99	0.00	0.00	-0.37	0.27
9.625in Casing Surface	16.00	940.00	924.00	16.00	939.99	0.00	0.00	-0.37	0.27
8.75in Open Hole	940.00	7388.00	6448.00	939.99	6968.74	-0.37	0.27	-571.81	-216.96
7in Casing Intermediate	16.00	7353.00	7337.00	16.00	6966.41	0.00	0.00	-571.46	-182.04
6.125in Open Hole	7353.00	11593.00	4240.00	6966.41	6951.39	-571.46	-182.04	-616.19	-4418.03



Actual Wellpath Report

WEICHEL 30N-23HZ AWP

Page 6 of 7



REFERENCE WELLPATH IDENTIFICATION

Operator	KERR-MCGEE OIL & GAS ONSHORE LP	Slot	SLOT#28 WEICHEL 30N-23HZ (496'FSL & 420'FEL, SEC.14)
Area	COLORADO	Well	WEICHEL 30N-23HZ
Field	WELD COUNTY (KERR MCGEE)	Wellbore	WEICHEL 30N-23HZ AWB
Facility	SEC.14-T2N-R65W		

TARGETS

Name	MD [ft]	TVD [ft]	North [ft]	East [ft]	Grid East [US ft]	Grid North [US ft]	Latitude	Longitude	Shape
WEICHEL 3 PAD SECTION 11 LINES		0.00	30.24	-1.96	3245181.02	1292398.97	40°07'57.724"N	104°37'23.207"W	polygon
WEICHEL 3 PAD SECTION 14 LINES		0.00	30.24	-1.96	3245181.02	1292398.97	40°07'57.724"N	104°37'23.207"W	polygon
WEICHEL 3 PAD SECTION 23 LINES		0.00	30.24	-1.96	3245181.02	1292398.97	40°07'57.724"N	104°37'23.207"W	polygon
WEICHEL 30N-23HZ BHL ON PLAT (145'FNL & 460'FWL, SEC.23) REV-1		6945.00	-601.38	-4443.31	3240746.32	1291723.50	40°07'51.478"N	104°38'20.386"W	point
WEICHEL 30N-23HZ BHL ON PLAT (145'FNL & 460'FWL, SEC.23) REV-2		6955.00	-601.38	-4443.31	3240746.32	1291723.50	40°07'51.478"N	104°38'20.386"W	point
WEICHEL 3 PAD HARDLINES (460' SETBACKS)		7200.00	30.24	-1.96	3245181.02	1292398.97	40°07'57.724"N	104°37'23.207"W	polygon
WEICHEL 3 PAD SEC.23 HARDLINES (460' SETBACKS)		7200.00	30.24	-1.96	3245181.02	1292398.97	40°07'57.724"N	104°37'23.207"W	polygon

WELLPATH COMPOSITION - Ref Wellbore: WEICHEL 30N-23HZ AWB Ref Wellpath: WEICHEL 30N-23HZ AWP

Start MD [ft]	End MD [ft]	Positional Uncertainty Model	Log Name/Comment	Wellbore
16.00	876.00	Generic gyro - continuous (Standard)	GYRODATA SURVEYS <116-876>	WEICHEL 30N-23HZ AWB
876.00	7325.00	NaviTrak (Standard)	BHI MWD SURVEYS 8 3/4" HOLE <976-7325>	WEICHEL 30N-23HZ AWB
7325.00	11524.00	OnTrak (Standard)	BHI MWD SURVEYS 6 1/8" HOLE <7412-11524>	WEICHEL 30N-23HZ AWB
11524.00	11593.00	Blind Drilling (std)	Projection to bit	WEICHEL 30N-23HZ AWB



Actual Wellpath Report

WEICHEL 30N-23HZ AWP

Page 7 of 7



REFERENCE WELLPATH IDENTIFICATION

Operator	KERR-MCGEE OIL & GAS ONSHORE LP	Slot	SLOT#28 WEICHEL 30N-23HZ (496'FSL & 420'FEL, SEC.14)
Area	COLORADO	Well	WEICHEL 30N-23HZ
Field	WELD COUNTY (KERR MCGEE)	Wellbore	WEICHEL 30N-23HZ AWB
Facility	SEC.14-T2N-R65W		

WELLPATH COMMENTS

MD [ft]	Inclination [°]	Azimuth [°]	TVD [ft]	Comment
16.00	0.000	174.230	16.00	Tie-On
116.00	0.240	174.230	116.00	Begin GYRO Surveys
876.00	0.260	6.130	875.99	Tie-Into GYRO Surveys
976.00	0.290	11.840	975.99	Begin BHI MWD Surveys
7353.00	85.522	269.373	6966.41	7" Casing Point
11524.00	90.060	271.280	6951.46	Last BHI MWD Survey
11593.00	90.060	271.280	6951.39	Projection to Bit