



Well Name: NER 514-32  
 Surface Location: Single Cellar RU 23-5 Pad  
 North American Datum 1983 , US State Plane 1983 , Colorado Central Zone  
 Ground Elevation: 7602.00  
 Easting 2351142.40 Latitude 39.47483  
 Longitude -107.79883 Slot A12  
 KELLY BUSHING @ 7628.00usft

+N/-S  
0.00

+E/-W  
0.00

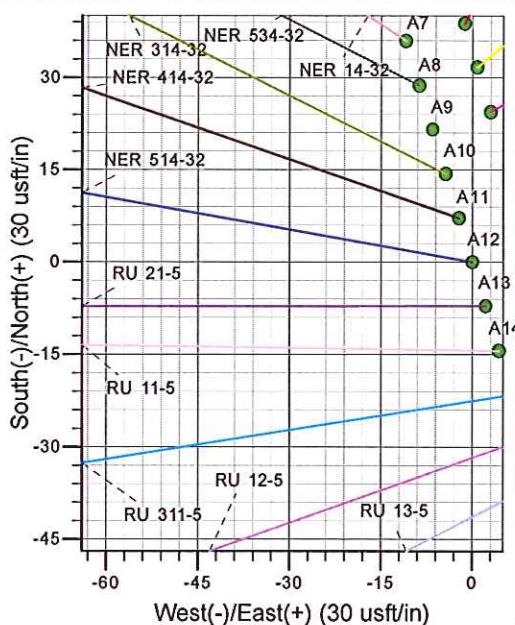
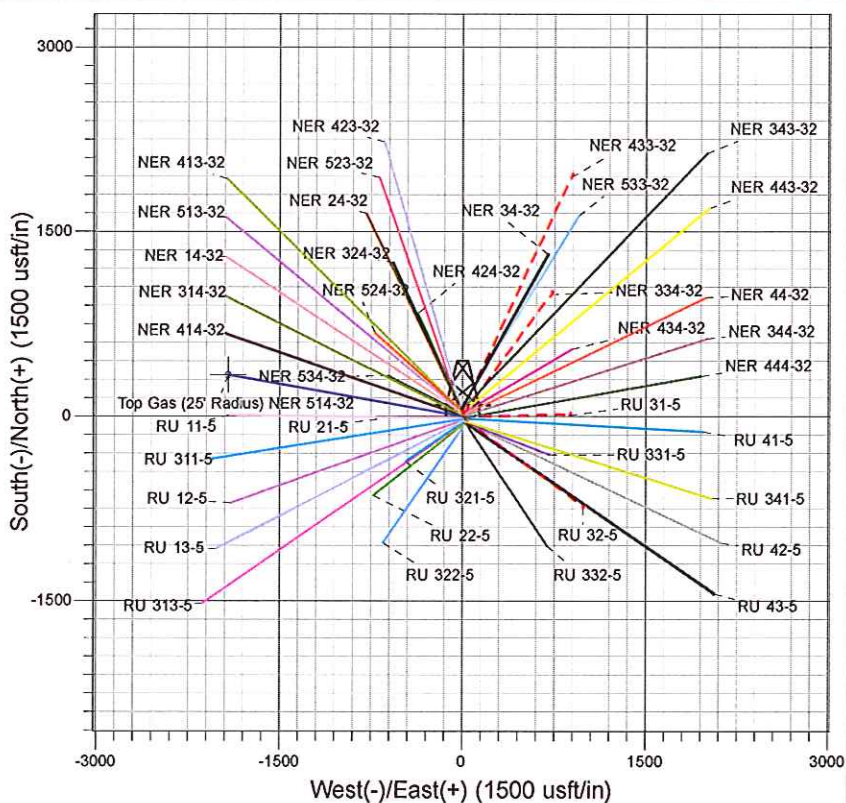
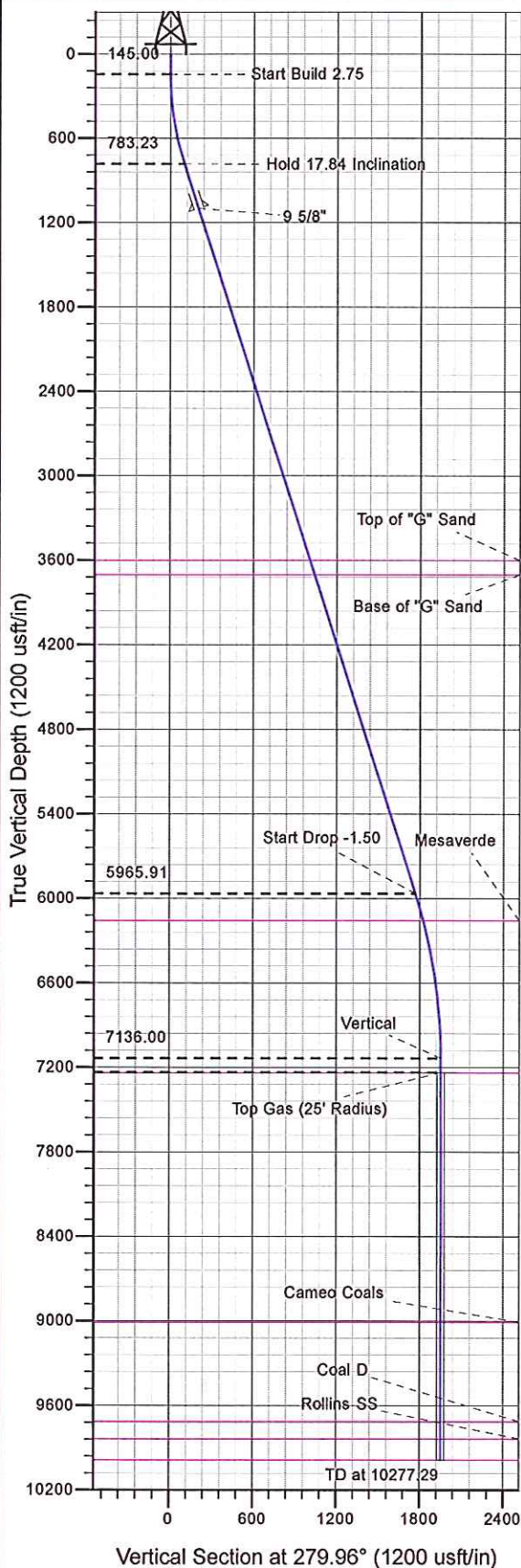
Northing  
1606046.10

East  
2351142.40

Latitude  
39.47483

Longitude  
-107.79883

Slot  
A12



Project: RU 05-07S-093W  
 Site: Single Cellar RU 23-5 Pad  
 Well: NER 514-32  
 Plan #3 22Jun12 kjs



Azimuths to True North  
 Magnetic North: 10.58°  
 Magnetic Field  
 Strength: 52542.8snT  
 Dip Angle: 65.84°  
 Date: 10/21/2008  
 Model: IGRF2005-10

#### ANNOTATIONS

MD	Inc	Azi	TVD	+N/-S	+E/-W	Vsect	Departure	Annotation
145.00	0.00	0.00	145.00	0.00	0.00	0.00	0.00	Start Build 2.75
793.66	17.84	279.96	783.23	17.32	-98.65	100.16	100.16	Hold 17.84 Inclination
6238.07	17.84	279.96	5965.91	305.72	-1741.32	1767.95	1767.95	Start Drop -1.50
7427.29	0.00	0.00	7136.00	337.48	-1922.18	1951.58	1951.58	Vertical
7527.29	0.00	0.00	7236.00	337.48	-1922.18	1951.58	1951.58	Top Gas
10277.29	0.00	0.00	9986.00	337.48	-1922.18	1951.58	1951.58	TD at 10277.29