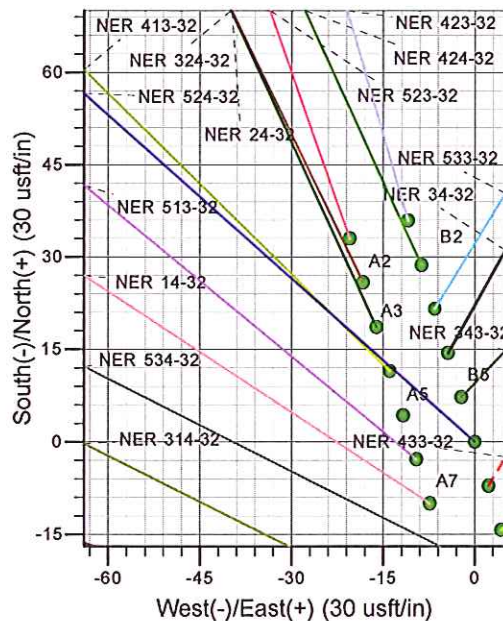
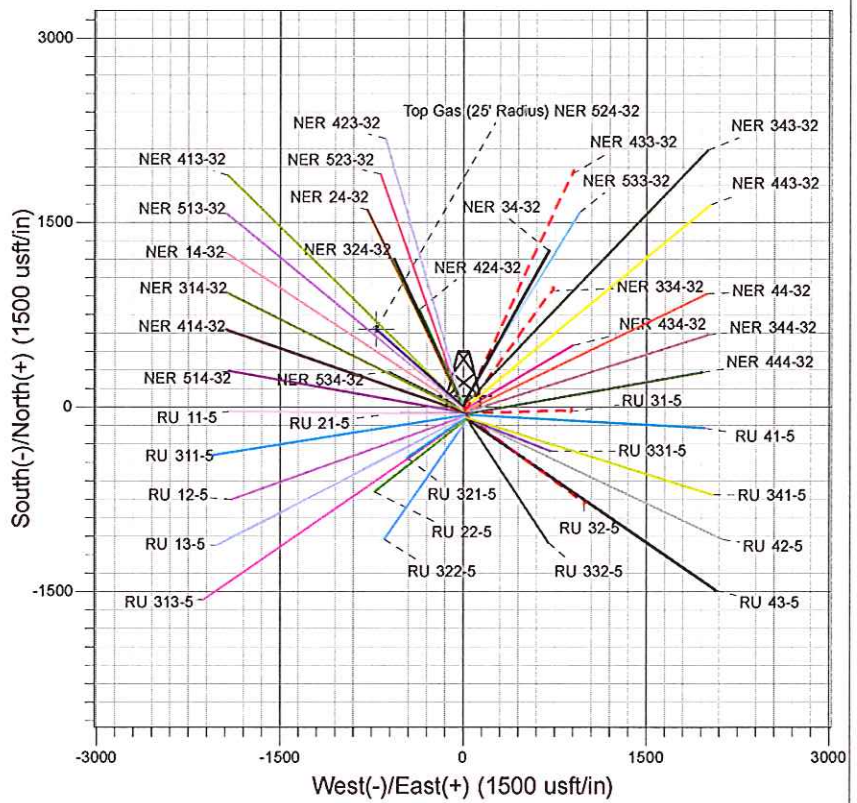
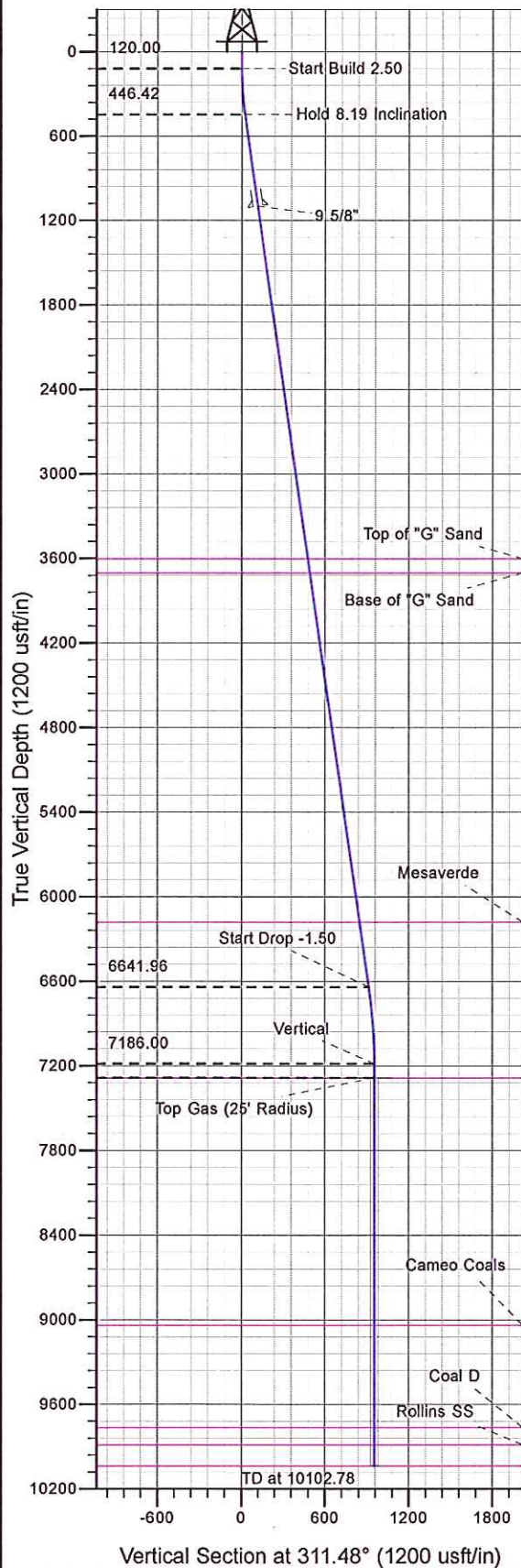




Well Name: NER 524-32  
 Surface Location: Single Cellar RU 23-5 Pad  
 North American Datum 1983 , US State Plane 1983 , Colorado Central Zone  
 Ground Elevation: 7602.00  
 +N/-S 0.00 +E/-W 0.00 Northing 1606092.10 Easting 2351140.00 Latitude 39.47496 Longitude -107.79885 Slot B6  
 KELLY BUSHING @ 7628.00usft



Project: RU 05-07S-093W  
 Site: Single Cellar RU 23-5 Pad  
 Well: NER 524-32  
 Plan #3 22Jun12 kjs



Azimuths to True North  
 Magnetic North: 10.58°  
 Magnetic Field  
 Strength: 52542.8snT  
 Dip Angle: 65.84°  
 Date: 10/21/2008  
 Model: IGRF2005-10

ANNOTATIONS								
MD	Inc	Azi	TVD	+N/-S	+E/-W	Vsect	Departure	Annotation
120.00	0.00	0.00	120.00	0.00	0.00	0.00	0.00	Start Build 2.50
447.53	8.19	311.48	446.42	15.48	-17.50	23.36	23.36	Hold 8.19 Inclination
6706.89	8.19	311.48	6641.96	606.02	-685.37	914.87	914.87	Start Drop -1.50
7252.78	0.00	0.00	7186.00	631.82	-714.54	953.81	953.81	Vertical
7352.78	0.00	0.00	7286.00	631.82	-714.54	953.81	953.81	Top Gas
10102.78	0.00	0.00	10036.00	631.82	-714.54	953.81	953.81	TD at 10102.78