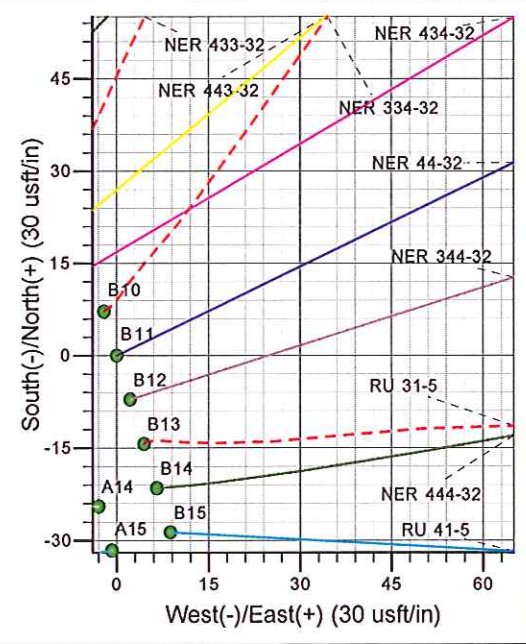
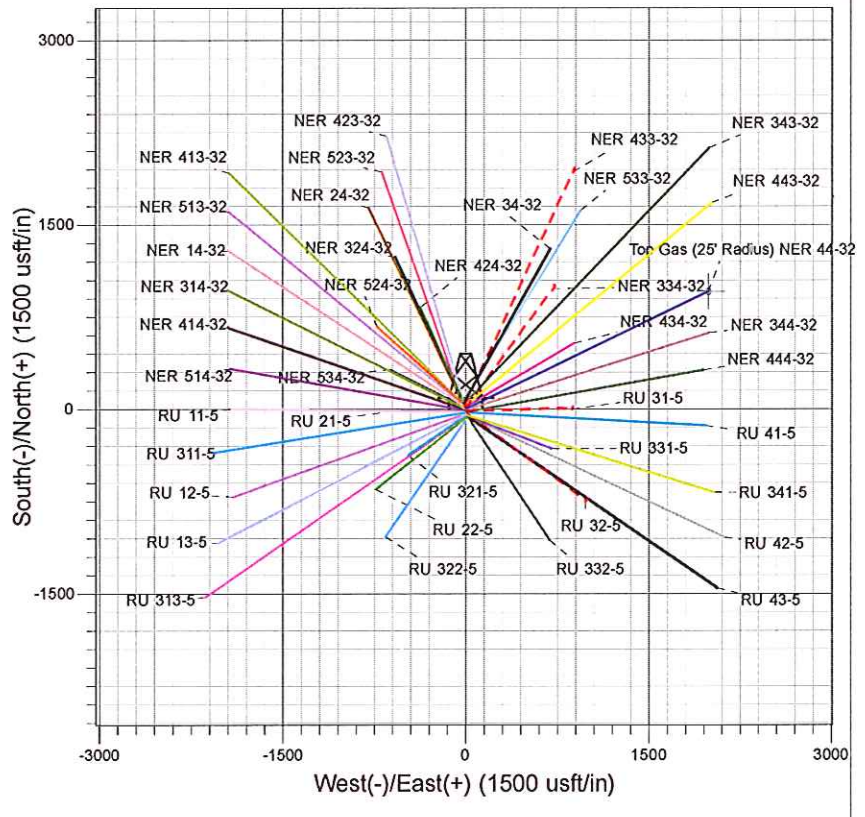
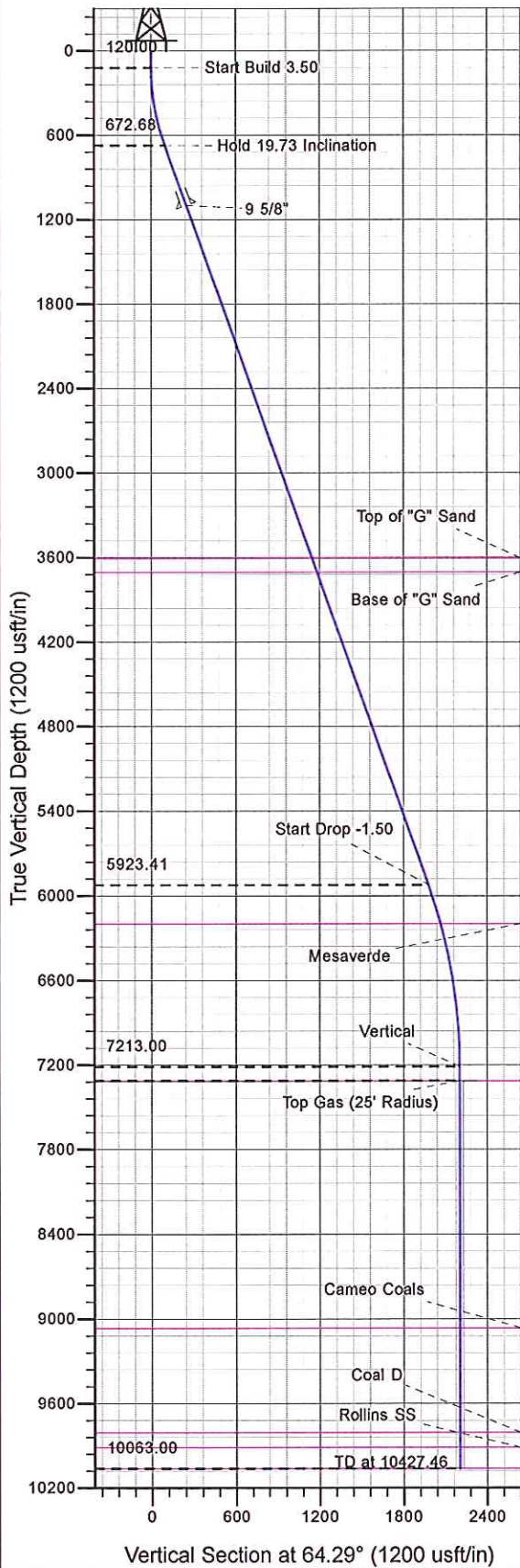




Well Name: NER 44-32
 Surface Location: Single Cellar RU 23-5 Pad
 North American Datum 1983 , US State Plane 1983 , Colorado Central Zone
 Ground Elevation: 7602.00
 +N/-S 0.00 +E/-W 0.00 Northing 1606056.00 Easting 2351150.00 Latitude 39.47486 Longitude -107.79881 Slot B11
 KELLY BUSHING @ 7628.00usft



Project: RU 05-07S-093W
 Site: Single Cellar RU 23-5 Pad
 Well: NER 44-32
 Plan #3 22Jun12 kjs

Azimuths to True North
 Magnetic North: 10.58°
 Magnetic Field
 Strength: 52542.8snT
 Dip Angle: 65.84°
 Date: 10/21/2008
 Model: IGRF2005-10

| ANNOTATIONS | | | | | | | | |
|-------------|-------|-------|----------|--------|---------|---------|-----------|------------------------|
| MD | Inc | Azi | TVD | +N/-S | +E/-W | Vsect | Departure | Annotation |
| 120.00 | 0.00 | 0.00 | 120.00 | 0.00 | 0.00 | 0.00 | 0.00 | Start Build 3.50 |
| 683.76 | 19.73 | 64.29 | 672.68 | 41.70 | 86.60 | 96.12 | 96.12 | Hold 19.73 Inclination |
| 6262.01 | 19.73 | 64.29 | 5923.41 | 858.74 | 1783.44 | 1979.42 | 1979.42 | Start Drop -1.50 |
| 7577.46 | 0.00 | 0.00 | 7213.00 | 956.04 | 1985.52 | 2203.70 | 2203.70 | Vertical |
| 7677.46 | 0.00 | 0.00 | 7313.00 | 956.04 | 1985.52 | 2203.70 | 2203.70 | Top Gas |
| 10427.46 | 0.00 | 0.00 | 10063.00 | 956.04 | 1985.52 | 2203.70 | 2203.70 | TD at 10427.46 |