

T5N, R90W, 6th P.M.

SWEPI LP

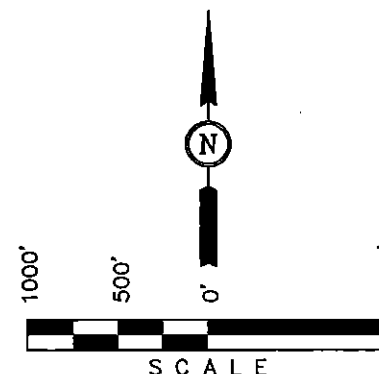
Well location, DEAL GULCH #8-16, located as shown in the SW 1/4 NE 1/4 of Section 16, T5N, R90W, 6th P.M., Moffat County, Colorado.

### BASIS OF ELEVATION

SPOT ELEVATION AT THE NORTHEAST CORNER OF SECTION 31, T5N, R90W, 6th P.M. TAKEN FROM THE HAMILTON QUADRANGLE, COLORADO, MOFFAT COUNTY, 7.5 MINUTE QUAD (TOPOGRAPHIC MAP) PUBLISHED BY THE UNITED STATES DEPARTMENT OF THE INTERIOR, GEOLOGICAL SURVEY. SAID ELEVATION IS MARKED AS BEING 6664 FEET.

### BASIS OF BEARINGS

BASIS OF BEARINGS IS A G.P.S. OBSERVATION.



### CERTIFICATE

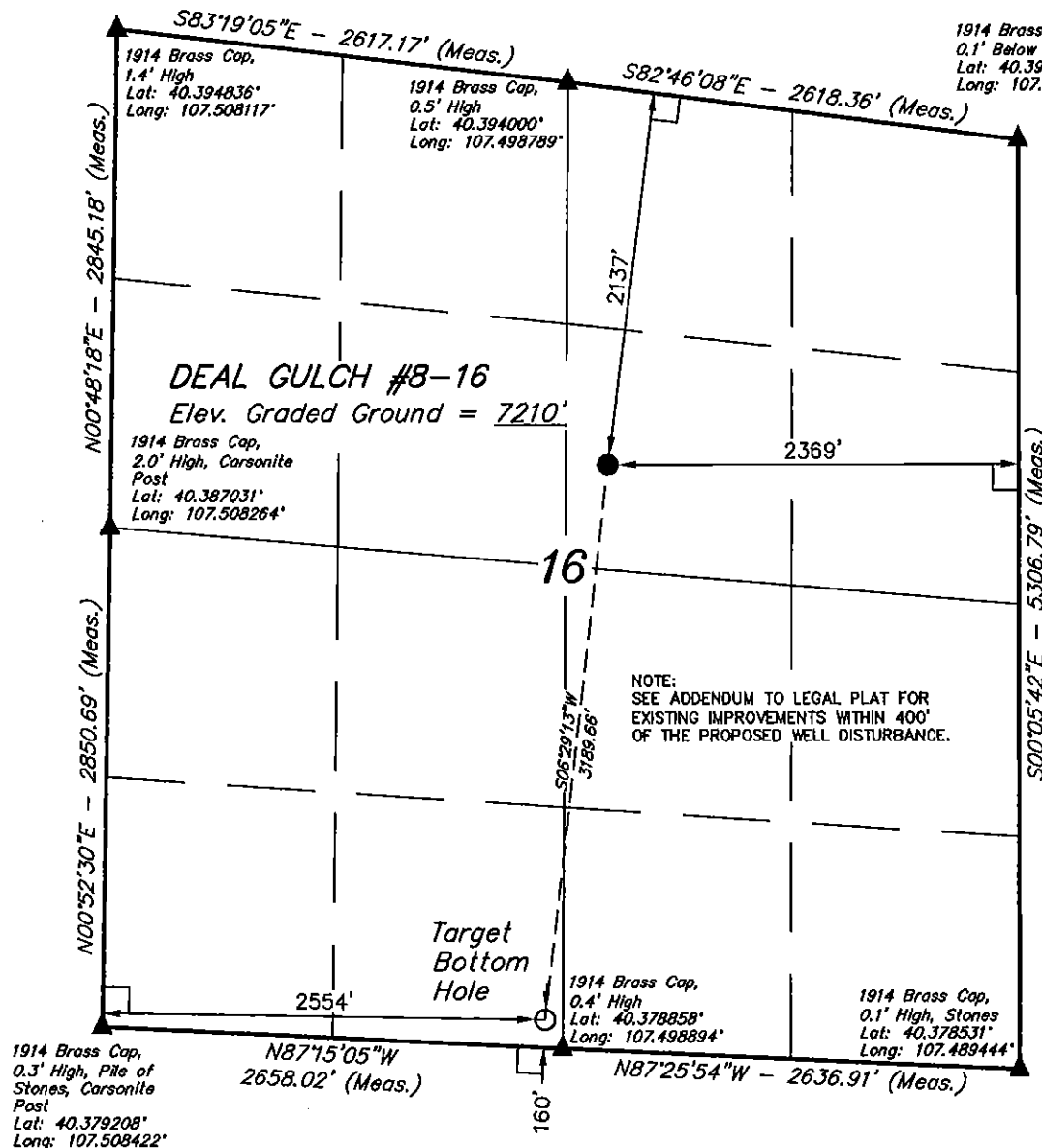
THIS IS TO CERTIFY THAT THE ABOVE PLAT WAS PREPARED FROM FIELD NOTES OF ACTUAL SURVEYS MADE BY ME OR UNDER MY SUPERVISION AND THAT THE SAME ARE TRUE AND CORRECT TO THE BEST OF MY KNOWLEDGE AND BELIEF.

REGISTERED LAND SURVEYOR  
REGISTRATION NO. 19901  
STATE OF COLORADO 09-28-12

UINTAH ENGINEERING & LAND SURVEYING

85 SOUTH 200 EAST - VERNAL, UTAH 84078

(435) 789-1017



### LEGEND:

- └─┘ = 90° SYMBOL
- = PROPOSED WELL HEAD.
- ▲ = SECTION CORNERS LOCATED

PDOP = 1.3

NAD 83 (TARGET BOTTOM HOLE)	NAD 83 (SURFACE LOCATION)
LATITUDE = 40°22'45.52" (40.379311)	LATITUDE = 40°23'16.83" (40.388008)
LONGITUDE = 107°29'57.32" (107.499256)	LONGITUDE = 107°29'52.85" (107.497958)
NAD 27 (TARGET BOTTOM HOLE)	NAD 27 (SURFACE LOCATION)
LATITUDE = 40°22'45.61" (40.379336)	LATITUDE = 40°23'16.92" (40.388033)
LONGITUDE = 107°29'55.09" (107.498636)	LONGITUDE = 107°29'50.42" (107.497339)

SCALE 1" = 1000'	DATE SURVEYED: 08-09-12	DATE DRAWN: 09-28-12
PARTY B.H. N.F. Z.L.	REFERENCES G.L.O. PLAT	
WEATHER HOT	FILE SWEPI LP	