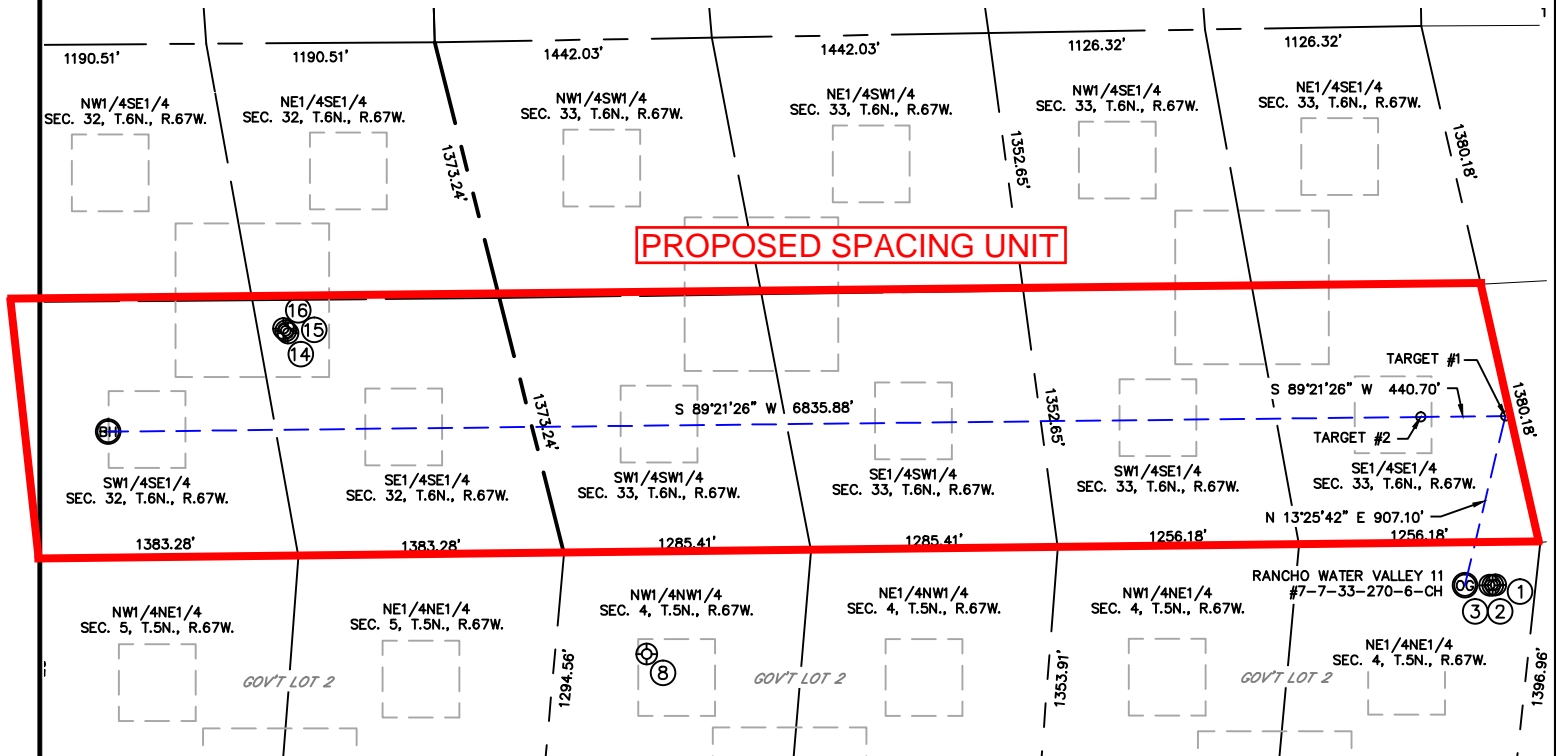


Lat40°, Inc. 1635 Foxtrail Drive, Suite 325 Loveland, CO 970-776-3321

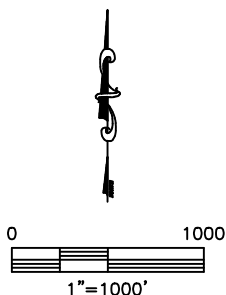
SITE SKETCH

RANCHO WATER VALLEY 11
#7-7-33-270-6-CH

SECTION: 4
TOWNSHIP: 5N
RANGE: 67W



- | | | | |
|--|--|--|---|
| ① | ② | ③ | ⑧ |
| RANCHO WATER VALLEY
3-9-4
NE1/4NE1/4
220' FNL
207' FEL
LAT-40.43549'N
LONG-104.88787'W
PDOP: 1.0
ELEV: 4774' | RANCHO WATER VALLEY
2-8-4
NE1/4NE1/4
220' FNL
223' FEL
LAT-40.43548'N
LONG-104.88793'W
PDOP: 1.0
ELEV: 4775' | RANCHO WATER VALLEY
2-6-4
NE1/4NE1/4
220' FNL
239' FEL
LAT-40.43548'N
LONG-104.88799'W
PDOP: 1.0
ELEV: 4775' | PAVISTMA 4-23
NW1/4NW1/4
528' FNL
475' FWL
LAT-40.43007'N
LONG-104.90434'W
PDOP: 4.0
ELEV: 4868' |
| ⑭ | ⑮ | ⑯ | |
| FRYE FARMS 9-7-32
SE1/4SE1/4
1162' FSL
1114' FEL
LAT-40.43920'N
LONG-104.91043'W
PDOP: 1.1
ELEV: 4881' | FRYE FARMS 9-5-32
SE1/4SE1/4
1175' FSL
1122' FEL
LAT-40.43923'N
LONG-104.91047'W
PDOP: 1.1
ELEV: 4881' | FRYE FARMS 7-5-32
SE1/4SE1/4
1186' FSL
1129' FEL
LAT-40.43927'N
LONG-104.91051'W
PDOP: 1.6
ELEV: 4881' | |



DATE: 9/28/2012
PROJECT#: 2011315