

---

**WPX ENERGY ROCKY MOUNTAIN LLC-EBUS**

---

**KP 534-18  
KOKOPELLI  
Garfield County , Colorado**

**Cement Surface Casing**  
**30-Jul-2012**

**Post Job Report**

## The Road to Excellence Starts with Safety

Sold To #: 300721	Ship To #: 2940744	Quote #:	Sales Order #: 9683476
Customer: WPX ENERGY ROCKY MOUNTAIN LLC-EBUS	Customer Rep: Hutson, Matt		
Well Name: KP	Well #: 534-18	API/UWI #: 05-045-20631	
Field: KOKOPELLI	City (SAP): SILT	County/Parish: Garfield	State: Colorado
Lat: N 39.522 deg. OR N 39 deg. 31 min. 19.733 secs.	Long: W 107.595 deg. OR W -108 deg. 24 min. 19.21 secs.		
Contractor: NABORS 574	Rig/Platform Name/Num: NABORS 574		
Job Purpose: Cement Surface Casing			
Well Type: Development Well	Job Type: Cement Surface Casing		
Sales Person: MAYO, MARK	Srv Supervisor: SMITH, DUSTIN	MBU ID Emp #: 418015	

## Job Personnel

HES Emp Name	Exp Hrs	Emp #	HES Emp Name	Exp Hrs	Emp #	HES Emp Name	Exp Hrs	Emp #
HYDE, DUSTIN C	8	453940	MILLER II, MATTHEW Reginald	8	425164	SMITH, DUSTIN Michael	8	418015
WYCKOFF, RYAN Scott	8	476117						

## Equipment

HES Unit #	Distance-1 way	HES Unit #	Distance-1 way	HES Unit #	Distance-1 way	HES Unit #	Distance-1 way
10867531	60 mile	10871245	60 mile	10989685	60 mile	11259883	60 mile
11808831	60 mile						

## Job Hours

Date	On Location Hours	Operating Hours	Date	On Location Hours	Operating Hours	Date	On Location Hours	Operating Hours
7/29/12	2	0	7/30/12	6	3			

**TOTAL** Total is the sum of each column separately

## Job

Formation Name	Top	Bottom	Called Out	Date	Time	Time Zone
Formation Depth (MD)			On Location	29 - Jul - 2012	18:00	MST
Form Type	BHST		Job Started	29 - Jul - 2012	22:00	MST
Job depth MD	855. ft	Job Depth TVD	Job Completed	30 - Jul - 2012	02:54	MST
Water Depth		Wk Ht Above Floor	Job Completed	30 - Jul - 2012	03:44	MST
Perforation Depth (MD)	From	To	Departed Loc	30 - Jul - 2012	06:00	MST

## Well Data

Description	New / Used	Max pressure psig	Size in	ID in	Weight lbm/ft	Thread	Grade	Top MD ft	Bottom MD ft	Top TVD ft	Bottom TVD ft
OPEN HOLE				13.5				.	865.		
SURFACE CASING	New		9.625	9.001	32.3			.	855.		

Sales/Rental/3<sup>rd</sup> Party (HES)

Description	Qty	Qty uom	Depth	Supplier
R/A DENSOMETER W/CHART RECORDER,/JOB,ZI	1	JOB		
PORT. DATA ACQUIS. W/OPTICEM RT W/HES	1	EA		
ADC (AUTO DENSITY CTRL) SYS, /JOB,ZI	1	JOB		
PLUG,CMTG,TOP,9 5/8,HWE,8.16 MIN/9.06 MA	1	EA		

## Tools and Accessories

Type	Size	Qty	Make	Depth	Type	Size	Qty	Make	Depth	Type	Size	Qty	Make
Guide Shoe					Packer					Top Plug	9 5/8	1	HES
Float Shoe					Bridge Plug					Bottom Plug			
Float Collar					Retainer					SSR plug set			
Insert Float										Plug Container	9 5/8	1	HES
Stage Tool										Centralizers			

## Miscellaneous Materials

Gelling Agt	Conc	Surfactant	Conc	Acid Type	Qty	Conc	%
Treatment Fld	Conc	Inhibitor	Conc	Sand Type	Size		Qty

Fluid Data									
Stage/Plug #: 1									
Fluid #	Stage Type	Fluid Name	Qty	Qty uom	Mixing Density lbm/gal	Yield ft <sup>3</sup> /sk	Mix Fluid Gal/sk	Rate bbl/min	Total Mix Fluid Gal/sk
1	Fresh Water		20.00	bbl	8.33	.0	.0	4.0	
2	VersaCem Tail	VERSACEM (TM) SYSTEM (452010)	250.0	sacks	12.8	2.11	11.75	7.0	11.75
11.75 Gal		FRESH WATER							
3	Displacement Fluid		63.70	bbl	8.34	.0	.0	10.0	
Calculated Values		Pressures		Volumes					
Displacement	63.7	Shut In: Instant		Lost Returns	0	Cement Slurry	93.9	Pad	
Top Of Cement	SURFACE	5 Min		Cement Returns	15	Actual Displacement	63.7	Treatment	
Frac Gradient		15 Min		Spacers	20	Load and Breakdown		Total Job	177.6
Rates									
Circulating		Mixing	7	Displacement	10	Avg. Job		8	
Cement Left In Pipe	Amount	45.52 ft	Reason	Shoe Joint					
Frac Ring # 1 @	ID		Frac ring # 2 @	ID		Frac Ring # 3 @	ID		Frac Ring # 4 @
The Information Stated Herein Is Correct				Customer Representative Signature					

*The Road to Excellence Starts with Safety*

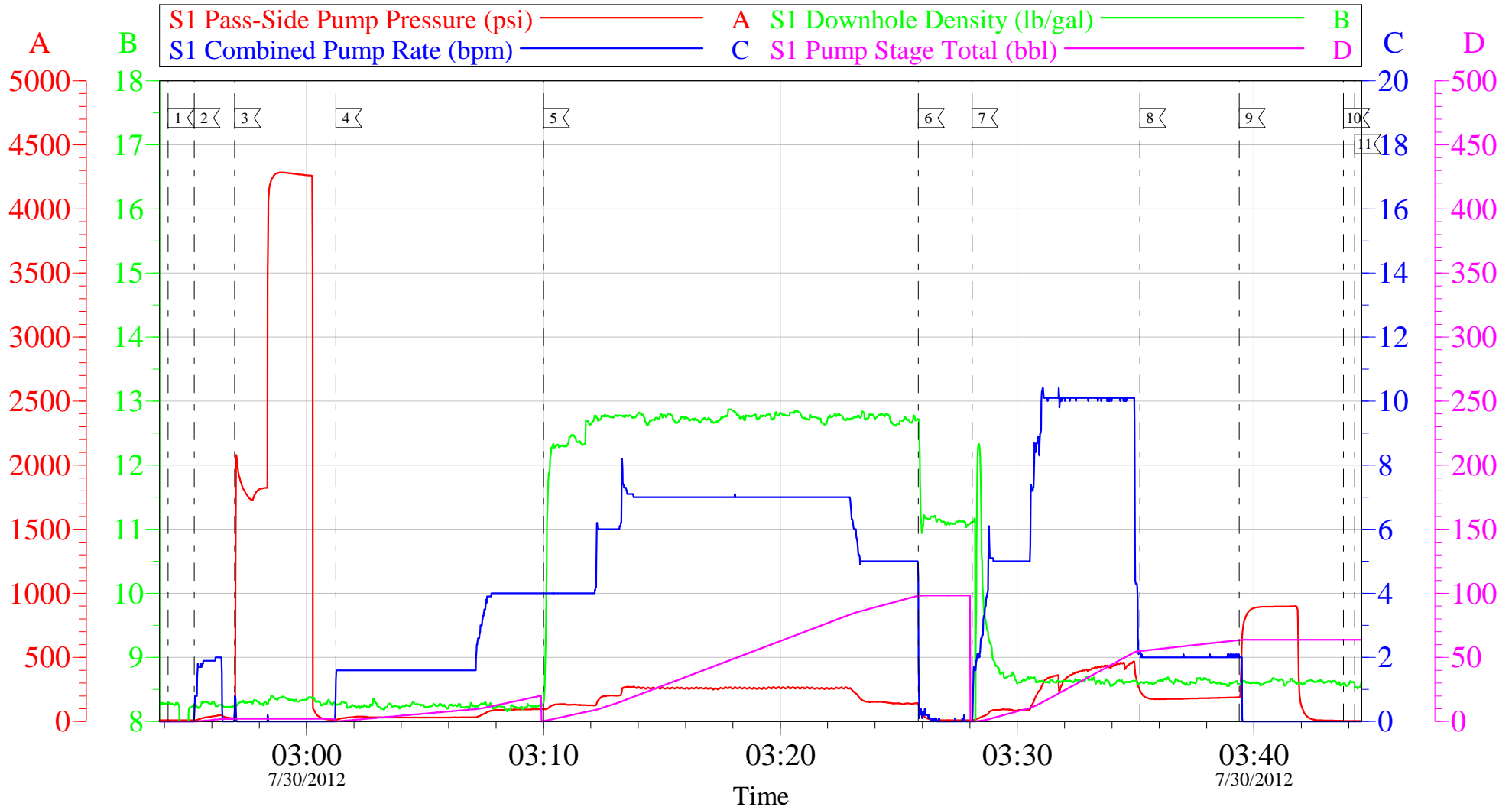
<b>Sold To #:</b> 300721		<b>Ship To #:</b> 2940744		<b>Quote #:</b>		<b>Sales Order #:</b> 9683476	
<b>Customer:</b> WPX ENERGY ROCKY MOUNTAIN LLC-EBUS				<b>Customer Rep:</b> Hutson, Matt			
<b>Well Name:</b> KP			<b>Well #:</b> 534-18			<b>API/UWI #:</b> 05-045-20631	
<b>Field:</b> KOKOPELLI		<b>City (SAP):</b> SILT		<b>County/Parish:</b> Garfield		<b>State:</b> Colorado	
<b>Legal Description:</b>							
<b>Lat:</b> N 39.522 deg. OR N 39 deg. 31 min. 19.733 secs.				<b>Long:</b> W 107.595 deg. OR W -108 deg. 24 min. 19.21 secs.			
<b>Contractor:</b> NABORS 574			<b>Rig/Platform Name/Num:</b> NABORS 574				
<b>Job Purpose:</b> Cement Surface Casing						<b>Ticket Amount:</b>	
<b>Well Type:</b> Development Well			<b>Job Type:</b> Cement Surface Casing				
<b>Sales Person:</b> MAYO, MARK			<b>Srv Supervisor:</b> SMITH, DUSTIN			<b>MBU ID Emp #:</b> 418015	

Activity Description	Date/Time	Cht #	Rate bbl/min	Volume bbl		Pressure psig		Comments
				Stage	Total	Tubing	Casing	
Call Out	07/29/2012 18:00							ELITE # 8
Depart Yard Safety Meeting	07/29/2012 20:00							ALL HES EMPLOYEES
Arrive At Loc	07/29/2012 22:00							ARRIVED ON LOCATION 1 HOUR EARLY DIDNT START CHARGING TIME UNTIL REQUESTED ON LOCATION TIME
Assessment Of Location Safety Meeting	07/30/2012 00:30							ALL HES EMPLOYEES
Pre-Rig Up Safety Meeting	07/30/2012 01:00							ALL HES EMPLOYEES
Rig-Up Equipment	07/30/2012 01:30							1 F-550 PICKUP 1 HT-400 PUMP TRUCK 1 660 BULK TRUCK
Pre-Job Safety Meeting	07/30/2012 02:30							ALL HES EMPLOYEES AND RIG CREW
Rig-Up Completed	07/30/2012 02:54							RIG CIRCULATED FOR 1 HOUR PRIOR TO JOB
Start Job	07/30/2012 02:54							TD:865 TP:855 CSG: 9 5/8 32.3# SHOE: 45.52 OH: 13 1/2 MUD: 10.3 PPG
Test Lines	07/30/2012 02:56					4298.0		PRESSURE TEST OK
Pump Spacer	07/30/2012 03:01		4	20	20		115.0	FRESH WATER
Activity Description	Date/Time	Cht #	Rate bbl/min	Volume bbl		Pressure psig		Comments
				Stage	Total	Tubing	Casing	

Pump Tail Cement	07/30/2012 03:10		8	93.9	93.9		280.0	250 SKS 12.8 PPG 2.11 YIELD 11.75 GAL/SK TAIL CEMENT WEIGHT VERIFIED VIA MUD SCALES THROUGHOUT TAIL CEMENT
Shutdown	07/30/2012 03:25							
Drop Plug	07/30/2012 03:25							PLUG AWAY NO PROBLEMS WASHED UP ON TOP OF PLUG AS PER COMPANY REP
Pump Displacement	07/30/2012 03:28		10	63.7	63.7		450.0	FRESH WATER
Slow Rate	07/30/2012 03:35		2	53	53		210.0	SLOW RATE TO BUMP PLUG
Bump Plug	07/30/2012 03:39		2	63.7	63.7		914.0	PSI BEFORE BUMPING PLUG @ 210 PSI BUMPED PLUG UP TO 914 PSI
Check Floats	07/30/2012 03:43							FLOATS HELD 1/2 BBL BACK TO DISPLACEMENT TANK
End Job	07/30/2012 03:44							GOOD CIRCULATION THROUGHOUT JOB NO PIPE MOVEMENT DURING JOB 15 BBLS OF CEMENT TO SURFACE RIG USED 40#S OF SUGAR
Pre-Rig Down Safety Meeting	07/30/2012 03:50							ALL HES EMPLOYEES
Rig-Down Equipment	07/30/2012 04:00							
Pre-Convoy Safety Meeting	07/30/2012 05:50							ALL HES EMPLOYEES
Crew Leave Location	07/30/2012 06:00							THANK YOU FOR USING HALLIBURTON CEMENT DUSTIN SMITH AND CREW

# WPX KP 534-18

## 9 5/8 SURFACE



Local Event Log					
1	START JOB	02:54:09	2	FILL LINES	02:55:15
3	TEST LINES	02:56:58	4	PUMP H2O SPACER	03:01:14
5	PUMP TAIL CEMENT	03:10:00	6	SHUTDOWN/ DROP PLUG	03:25:50
7	PUMP DISPLACEMENT	03:28:06	8	SLOW RATE	03:35:11
9	BUMP PLUG	03:39:22	10	CHECK FLOATS	03:43:47
11	END JOB	03:44:15			

Customer: WPX  
Well Description: KP 534-18  
Company Rep: MATT HUTSON

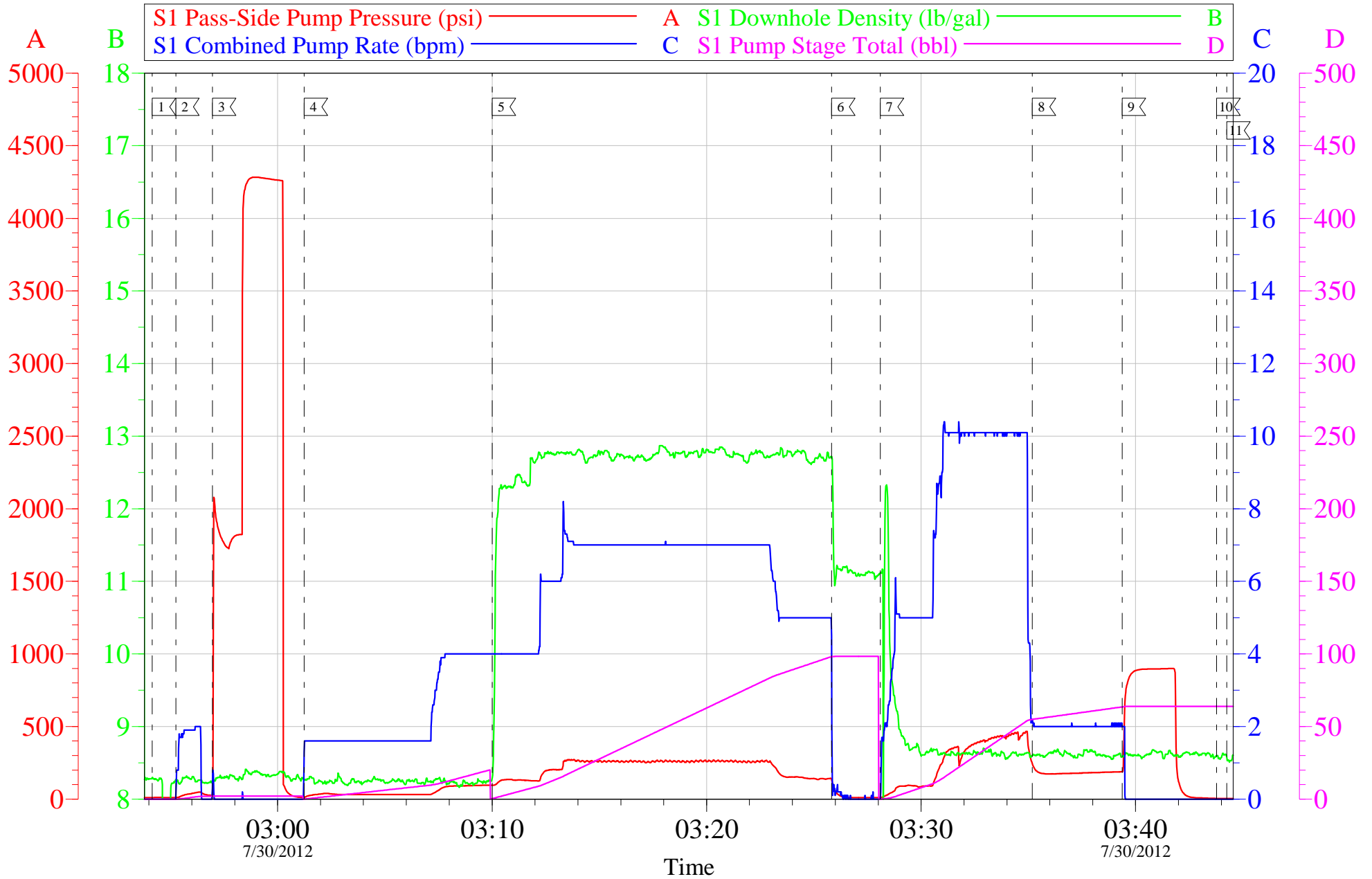
Job Date: 30-Jul-2012  
Job Type: 9 5/8 SURFACE  
Cement Supervisor: DUSTIN SMITH

Sales Order #: 9683476  
ADC Used: YES  
Elite #: 8 DUSTIN HYDE

OptiCem v6.4.10  
30-Jul-12 03:52

# WPX KP 534-18

## 9 5/8 SURFACE



Customer: WPX  
Well Description: KP 534-18  
Company Rep: MATT HUTSON

Job Date: 30-Jul-2012  
Job Type: 9 5/8 SURFACE  
Cement Supervisor: DUSTIN SMITH

Sales Order #: 9683476  
ADC Used: YES  
Elite #: 8 DUSTIN HYDE

OptiCem v6.4.10  
30-Jul-12 03:54

# HALLIBURTON

## Water Analysis Report

Company: WPX

Submitted by: DUSTIN SMITH

Attention: J. TROUT/C.MARTINEZ

Lease KP

Well # 534-18

Date: 7/30/2012

Date Rec.: 7/30/2012

S.O.# 9863476

Job Type: SURFACE

Specific Gravity	<i>MAX</i>	<b>1</b>
pH	<i>8</i>	<b>7</b>
Potassium (K)	<i>5000</i>	<b>400</b> Mg / L
Calcium (Ca)	<i>500</i>	<b>120</b> Mg / L
Iron (FE2)	<i>300</i>	<b>0</b> Mg / L
Chlorides (Cl)	<i>3000</i>	<b>0</b> Mg / L
Sulfates (SO <sub>4</sub> )	<i>1500</i>	<b>UNDER 200</b> Mg / L
Chlorine (Cl <sub>2</sub> )		<b>0</b> Mg / L
Temp	<i>40-90</i>	<b>74</b> Deg
Total Dissolved Solids		<b>620</b> Mg / L

Respectfully: DUSTIN SMITH

Title: CEMENTING SUPERVISOR

Location: Grand Junction, CO

NOTICE:

This report is limited to the described sample tested. Any person using or relying on this report agrees that Halliburton shall not be liable for any loss or damage whether due to act or omission resulting from such report or its



<b>Sales Order #:</b> 9683476	<b>Line Item:</b> 10	<b>Survey Conducted Date:</b> 7/30/2012
<b>Customer:</b> WPX ENERGY ROCKY MOUNTAIN LLC-EBUS		<b>Job Type (BOM):</b> CMT SURFACE CASING BOM
<b>Customer Representative:</b> MATT HUTSON		<b>API / UWI: (leave blank if unknown)</b> 05-045-20631
<b>Well Name:</b> KP		<b>Well Number:</b> 534-18
<b>Well Type:</b> Development Well	<b>Well Country:</b> United States of America	
<b>H2S Present:</b> No	<b>Well State:</b> Colorado	<b>Well County:</b> Garfield

Dear Customer,

We hope that you were satisfied with the service quality of this job performed by Halliburton. It is the aim of our management and service personnel to deliver equipment and service of a standard unmatched in the service sector of the energy industry.

Please take the time to let us know if our performance met with your satisfaction. Please be as critical as possible to ensure we constantly improve our service. Your comments are of great value to us and are intended for the exclusive use of Halliburton.

### CUSTOMER SATISFACTION SURVEY

CATEGORY	CUSTOMER SATISFACTION RESPONSE	
Survey Conducted Date	The date the survey was conducted	7/30/2012
Survey Interviewer	The survey interviewer is the person who initiated the survey.	DUSTIN SMITH (HX37079)
Customer Participation	Did the customer participate in this survey? (Y/N)	Yes
Customer Representative	Enter the Customer representative name	MATT HUTSON
HSE	Was our HSE performance satisfactory? Circle Y or N	Yes
Equipment	Were you satisfied with our Equipment? Circle Y or N	Yes
Personnel	Were you satisfied with our people? Circle Y or N	Yes
Customer Comment	Customer's Comment	

CUSTOMER SIGNATURE

<b>Sales Order #:</b> 9683476	<b>Line Item:</b> 10	<b>Survey Conducted Date:</b> 7/30/2012
<b>Customer:</b> WPX ENERGY ROCKY MOUNTAIN LLC-EBUS		<b>Job Type (BOM):</b> CMT SURFACE CASING BOM
<b>Customer Representative:</b> MATT HUTSON		<b>API / UWI: (leave blank if unknown)</b> 05-045-20631
<b>Well Name:</b> KP		<b>Well Number:</b> 534-18
<b>Well Type:</b> Development Well	<b>Well Country:</b> United States of America	
<b>H2S Present:</b> No	<b>Well State:</b> Colorado	<b>Well County:</b> Garfield

### KEY PERFORMANCE INDICATORS

General	
<b>Survey Conducted Date</b> The date the survey was conducted	7/30/2012

Cementing KPI Survey	
<b>Type of Job</b> Select the type of job. (Cementing or Non-Cementing)	0
<b>Select the Maximum Deviation range for this Job</b> What is the highest deviation for the job you just completed? This may not be the maximum well deviation.	Vertical
<b>Total Operating Time (hours)</b> Total Operating Hours Including Rig-up, Pumping, Rig-down. Enter in decimal format.	3
<b>HSE Incident, Accident, Injury</b> HSE Incident, Accident, Injury. This should be recordable incidents only.	No
<b>Was the job purpose achieved?</b> Was the job delivered correctly as per customer agreed design?	Yes
<b>Operating Hours (Pumping Hours)</b> Total number of hours pumping fluid on this job. Enter in decimal format.	1
<b>Customer Non-Productive Rig Time (hrs)</b> Lost time due to Halliburton in the start, execution, or completion of an ordered service or product, or delays in a follow-on service. Enter in decimal format. 0 if none.	0
<b>Type of Rig Classification Job Was Performed</b> Type Of Rig (classification) Job Was Performed On	Drilling Rig (Portable)
<b>Number Of JSAs Performed</b> Number Of Jsas Performed	6
<b>Number of Unplanned Shutdowns</b> Unplanned shutdown is when injection stops for any period of time.	0
<b>Was this a Primary Cement Job (Yes / No)</b>	Yes

<b>Sales Order #:</b> 9683476	<b>Line Item:</b> 10	<b>Survey Conducted Date:</b> 7/30/2012
<b>Customer:</b> WPX ENERGY ROCKY MOUNTAIN LLC-EBUS		<b>Job Type (BOM):</b> CMT SURFACE CASING BOM
<b>Customer Representative:</b> MATT HUTSON		<b>API / UWI: (leave blank if unknown)</b> 05-045-20631
<b>Well Name:</b> KP		<b>Well Number:</b> 534-18
<b>Well Type:</b> Development Well	<b>Well Country:</b> United States of America	
<b>H2S Present:</b> No	<b>Well State:</b> Colorado	<b>Well County:</b> Garfield

Primary Cement Job= Casing job, Liner job, or Tie-back job.	
<b>Did We Run Wiper Plugs?</b> Did We Run Top And Bottom Casing Wiper Plugs?	Top
<b>Mixing Density of Job Stayed in Designed Density Range (0-100%)</b> Density Range defined as +/- .20 ppg. Calculation: Total BBLs cement mixed at designed density divided by total BBLs of cement multiplied by 100	90
<b>Was Automated Density Control Used?</b> Was Automated Density Control (ADC) Used ?	Yes
<b>Pump Rate (percent) of Job Stayed At Designed Pump Rate</b> Pump Rate range defined as +/- 1bbl/min. Calculation: Total BBLs of fluid pumped at the designed rate divided by Total BBLs of fluid pumped, multiplied by 100	90
<b>Nbr of Remedial Sqz Jobs Rqd - Competition</b> Number Of Remedial Squeeze Jobs Required After Primary Job Performed By Competition	0
<b>Nbr of Remedial Plug Jobs Rqd - HES</b> Number Of Remedial Plug Jobs Needed After Primary Plug Pumped By HES	0
<b>Nbr of Remedial Sqz Jobs Rqd - HES</b> Number Of Remedial Squeeze Jobs Required After Primary Job Performed By HES	0