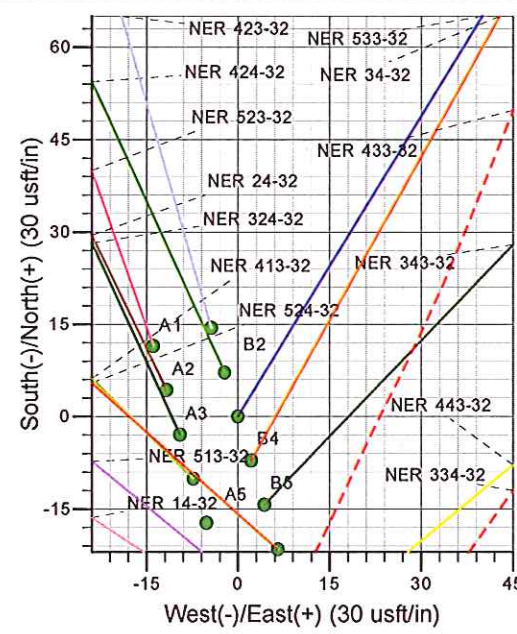
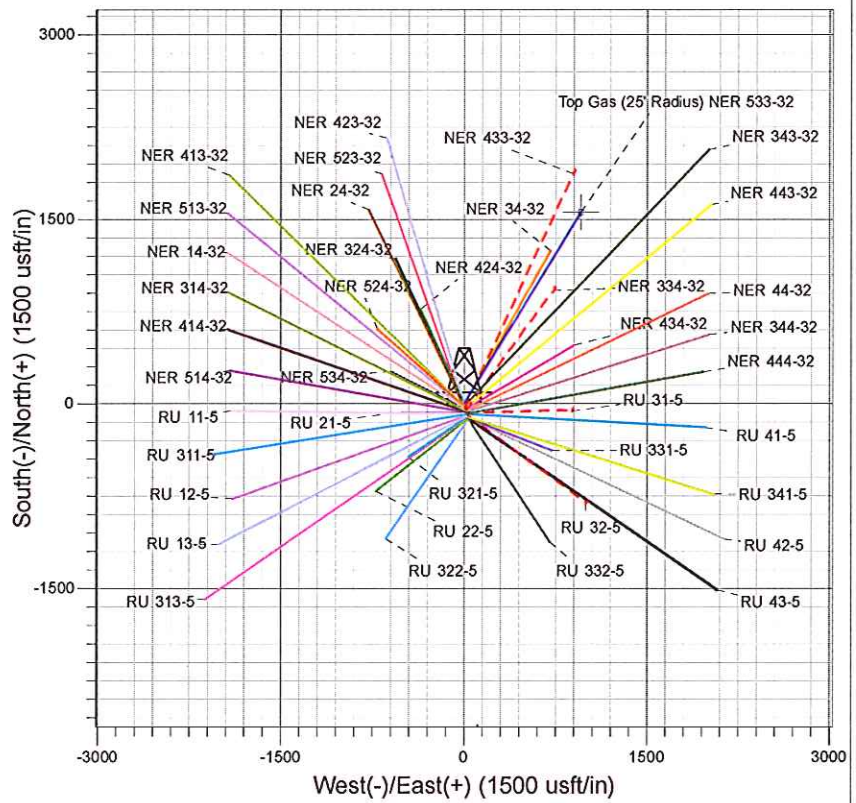
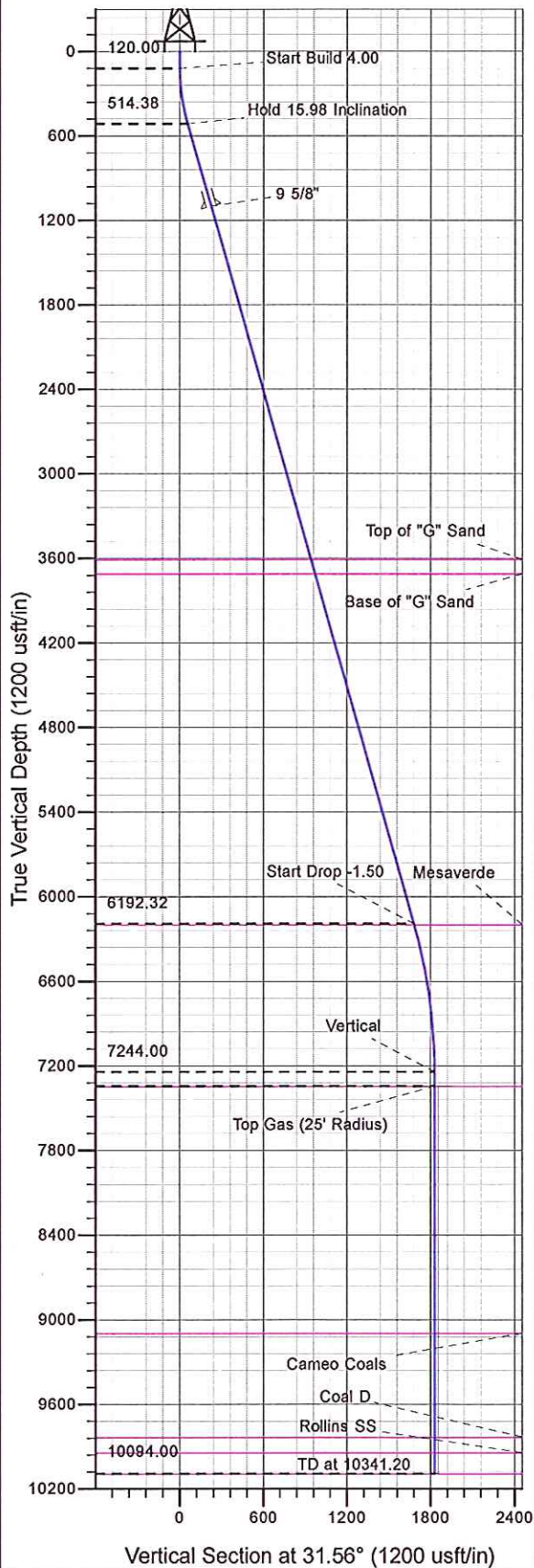




Well Name: NER 533-32
 Surface Location: Single Cellar RU 23-5 Pad
 North American Datum 1983 , US State Plane 1983 , Colorado Central Zone
 Ground Elevation: 7602.00
 +N/-S 0.00 +E/-W 0.00 Northing 1606113.80 Easting 2351134.00 Latitude 39.47502 Longitude -107.79887 Slot B3
 KELLY BUSHING @ 7628.00usft



Project: RU 05-07S-093W
 Site: Single Cellar RU 23-5 Pad
 Well: NER 533-32
 Plan #3 22Jun12 kjs

Azimuths to True North
 Magnetic North: 10.58°
 Magnetic Field
 Strength: 52542.9snT
 Dip Angle: 65.84°
 Date: 10/21/2008
 Model: IGRF2005-10

ANNOTATIONS									
MD	Inc	Azi	TVD	+N/-S	+E/-W	VSec	Departure	Annotation	
120.00	0.00	0.00	120.00	0.00	0.00	0.00	0.00	Start Build 4.00	
519.54	15.98	31.56	514.38	47.17	28.98	55.36	55.36	Hold 15.98 Inclination	
6425.76	15.98	31.56	6192.32	1432.76	880.15	1681.51	1681.51	Start Drop -1.50	
7491.20	0.00	0.00	7244.00	1558.56	957.43	1829.14	1829.14	Vertical	
7591.20	0.00	0.00	7344.00	1558.56	957.43	1829.14	1829.14	Top Gas	
10341.20	0.00	0.00	10094.00	1558.56	957.43	1829.14	1829.14	TD at 10341.20	