

The Road to Excellence Starts with Safety

Sold To #: 300721	Ship To #: 2896847	Quote #:	Sales Order #: 9135091
Customer: WILLIAMS PRODUCTION RMT INC - EBUS		Customer Rep: Bascom, Kenny	
Well Name: RWF	Well #: 21-32	API/UWI #: 05-045-21054	
Field: RULISON	City (SAP): RIFLE	County/Parish: Garfield	State: Colorado
Lat: N 39.486 deg. OR N 39 deg. 29 min. 8.668 secs.		Long: W 107.916 deg. OR W -108 deg. 5 min. 3.3 secs.	
Contractor: CYCLONE 17	Rig/Platform Name/Num: CYCLONE 17		
Job Purpose: Cement Surface Casing			
Well Type: Development Well		Job Type: Cement Surface Casing	
Sales Person: SCOTT, KYLE		Srvc Supervisor: ARNOLD, EDWARD	MBU ID Emp #: 439784

Job Personnel

HES Emp Name	Exp Hrs	Emp #	HES Emp Name	Exp Hrs	Emp #	HES Emp Name	Exp Hrs	Emp #
ARNOLD, EDWARD John	11	439784	BRENNECKE, ANDREW Bailey	11	486345	MILLER II, MATTHEW Reginald	11	425164

Equipment

HES Unit #	Distance-1 way	HES Unit #	Distance-1 way	HES Unit #	Distance-1 way	HES Unit #	Distance-1 way
10001431	60 mile	10551730C	60 mile	10724643	60 mile	10973571	60 mile
11583933	60 mile						

Job Hours

Date	On Location Hours	Operating Hours	Date	On Location Hours	Operating Hours	Date	On Location Hours	Operating Hours
12.25.2011	11	3.5						
TOTAL	<i>Total is the sum of each column separately</i>							

Job

Job Times

Formation Name	Formation Depth (MD)	Top	Bottom	Called Out	Date	Time	Time Zone
				On Location	25 - Dec - 2011	07:00	MST
Form Type			BHST	Job Started	25 - Dec - 2011	15:10	MST
Job depth MD	1120. ft		Job Depth TVD	1120. ft	Job Completed	25 - Dec - 2011	16:05
Water Depth			Wk Ht Above Floor	4. ft	Departed Loc	25 - Dec - 2011	18:00
Perforation Depth (MD)	From		To				

Well Data

Description	New / Used	Max pressure psig	Size in	ID in	Weight lbm/ft	Thread	Grade	Top MD ft	Bottom MD ft	Top TVD ft	Bottom TVD ft
Open Hole				13.5				.	1120.		
Surface Casing	Unknown		9.625	9.001	32.3		H-40	.	1106.		

Sales/Rental/3rd Party (HES)

Description	Qty	Qty uom	Depth	Supplier
PLUG,CMTG, TOP, 9 5/8, HWE, 8.16 MIN/9.06 MA	1	EA		

Tools and Accessories

Type	Size	Qty	Make	Depth	Type	Size	Qty	Make	Depth	Type	Size	Qty	Make
Guide Shoe					Packer					Top Plug	9.625	1	HES
Float Shoe					Bridge Plug					Bottom Plug			
Float Collar					Retainer					SSR plug set			
Insert Float										Plug Container	9.625	1	HES
Stage Tool										Centralizers			

Miscellaneous Materials

Gelling Agt	Conc	Surfactant	Conc	Acid Type	Qty	Conc %
Treatment Fld	Conc	Inhibitor	Conc	Sand Type	Size	Qty

Fluid Data

Stage/Plug #: 1										
Fluid #	Stage Type	Fluid Name	Qty	Qty uom	Mixing Density lbm/gal	Yield ft ³ /sk	Mix Fluid Gal/sk	Rate bbl/min	Total Mix Fluid Gal/sk	

HALLIBURTON

Cementing Job Summary

1	Water Spacer		20.00	bbbl	8.34	.0	.0	4	
2	Lead Cement	VERSACEM (TM) SYSTEM (452010)	160.0	sacks	12.3	2.38	13.75	8	13.75
	13.75 Gal	FRESH WATER							
3	Tail Cement	VERSACEM (TM) SYSTEM (452010)	160.0	sacks	12.8	2.11	11.75	8	11.75
	11.75 Gal	FRESH WATER							
4	Displacement Fluid		83.00	bbbl	8.34	.0	.0	10	
Calculated Values		Pressures			Volumes				
Displacement	83.5	Shut In: Instant		Lost Returns	0	Cement Slurry	127.9	Pad	
Top Of Cement	SURFACE	5 Min		Cement Returns	28	Actual Displacement	83.5	Treatment	
Frac Gradient		15 Min		Spacers	20	Load and Breakdown		Total Job	231.4
Rates									
Circulating	RIG	Mixing	8	Displacement	10	Avg. Job	9		
Cement Left In Pipe	Amount	45 ft	Reason	Shoe Joint					
Frac Ring # 1 @	ID	Frac ring # 2 @	ID	Frac Ring # 3 @	ID	Frac Ring # 4 @	ID		
The Information Stated Herein Is Correct				Customer Representative Signature					

The Road to Excellence Starts with Safety

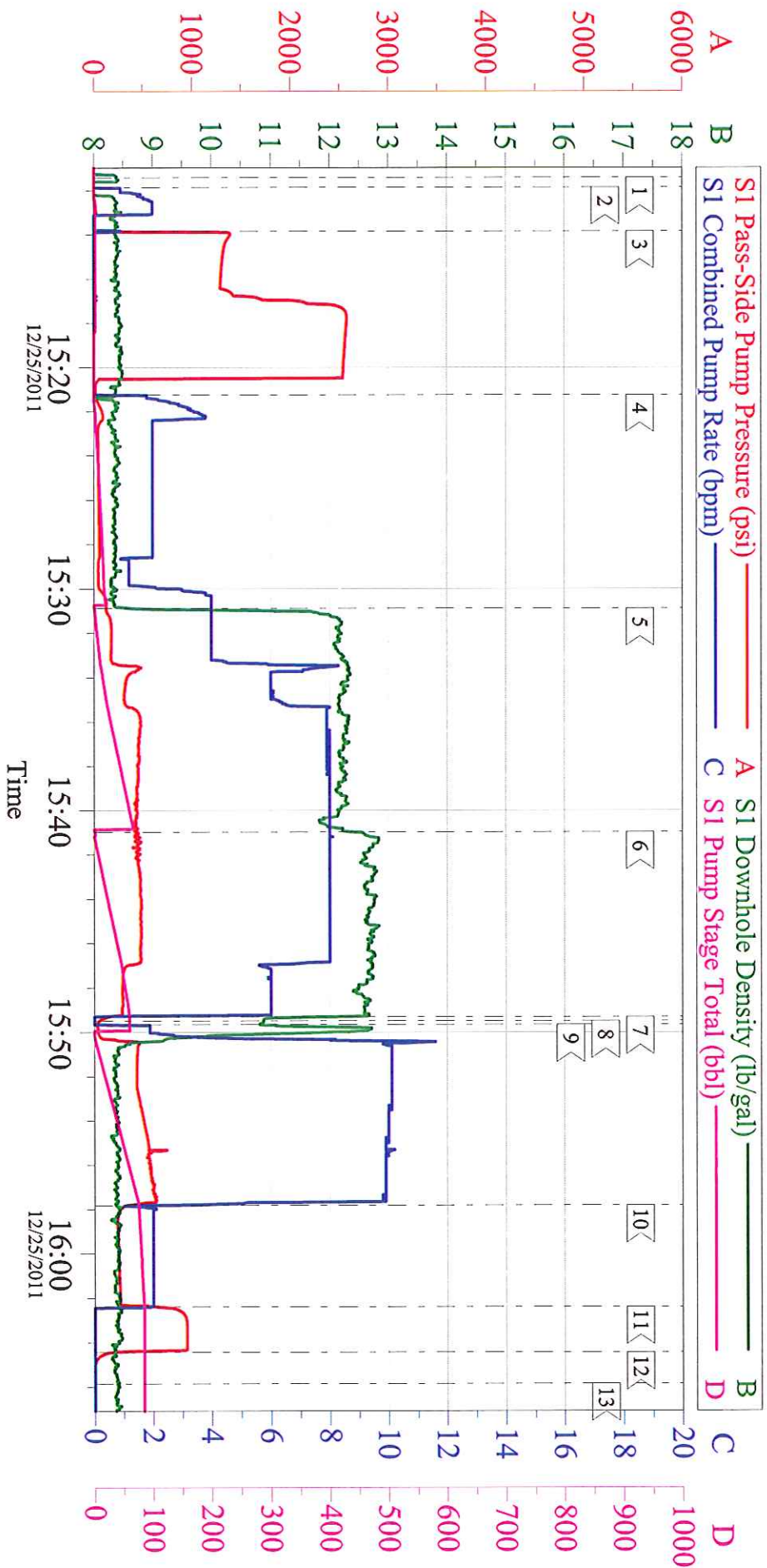
Sold To #: 300721	Ship To #: 2896847	Quote #:	Sales Order #: 9135091
Customer: WILLIAMS PRODUCTION RMT INC - EBUS		Customer Rep: Bascom, Kenny	
Well Name: RWF	Well #: 21-32	API/UWI #: 05-045-21054	
Field: RULISON	City (SAP): RIFLE	County/Parish: Garfield	State: Colorado
Legal Description:			
Lat: N 39.486 deg. OR N 39 deg. 29 min. 8.668 secs.		Long: W 107.916 deg. OR W -108 deg. 5 min. 3.3 secs.	
Contractor: CYCLONE 17		Rig/Platform Name/Num: CYCLONE 17	
Job Purpose: Cement Surface Casing			Ticket Amount:
Well Type: Development Well		Job Type: Cement Surface Casing	
Sales Person: SCOTT, KYLE		Srvc Supervisor: ARNOLD, EDWARD	MBU ID Emp #: 439784

Activity Description	Date/Time	Cht #	Rate bbl/min	Volume bbl		Pressure psig		Comments
				Stage	Total	Tubing	Casing	
Call Out	12/25/2011 01:30							No Derick Charge, 40# sugar used, 1 Add Hour Charged.
Pre-Convoy Safety Meeting	12/25/2011 05:20							Including entire cement crew. Had to wait for bulk truck to be loaded.
Crew Leave Yard	12/25/2011 05:30							
Arrive At Loc	12/25/2011 07:00							Rig still Drilling, Rig had trouble with mud pumps during the night.
Assessment Of Location Safety Meeting	12/25/2011 07:30							Water; PH 7; KCL 250; So4 <200; Fe 0; Calcium 120; Chlorides 0; Temp 45; TDS 200.
Pre-Rig Up Safety Meeting	12/25/2011 07:40							Including entire cement crew.
Rig-Up Equipment	12/25/2011 07:45							1 Elite # 2; 1 660 bulk truck; 1 hard line to floor; 2 lines to upright. 9.625" compact head.
Rig-Up Completed	12/25/2011 08:30							
Pre-Job Safety Meeting	12/25/2011 14:45							Including everyone on location.
Start Job	12/25/2011 15:10							TD 1120; TP 1106; SJ 45; OH 13.5; Casing 9.625" 32.3# H-40; Mud 10.6 ppg.
Pump Water	12/25/2011 15:11		2	2			40.0	Fill lines with fresh water.
Test Lines	12/25/2011 15:13						2540.0	Good pressure test, no leaks.
Pump Spacer 1	12/25/2011 15:21		4	20			150.0	20 BBL fresh water spacer.

Activity Description	Date/Time	Cht #	Rate bbl/min	Volume bbl		Pressure psig		Comments
				Stage	Total	Tubing	Casing	
Pump Lead Cement	12/25/2011 15:30		8	67.8			417.0	160 sks Lead Cement, 12.3 ppg, 2.38 cf3, 13.75 gal/sk.
Pump Tail Cement	12/25/2011 15:40		8	60.1			450.0	160 sks Tail Cement, 12.8 ppg, 2.11 cf3, 11.75 gal/sk.
Shutdown	12/25/2011 15:49							
Drop Plug	12/25/2011 15:49							Plug left container.
Pump Displacement	12/25/2011 15:49		10	73.5			612.0	Fresh water displacement.
Slow Rate	12/25/2011 15:57		2	10			250.0	Slow rate 10 BBL's prior to bumping the plug.
Bump Plug	12/25/2011 16:02				83.5		940.0	Bumped plug, took 500 PSI over.
Check Floats	12/25/2011 16:04							Floats held, .5 BBL back, 28 BBL's good cement to surface.
End Job	12/25/2011 16:05							
Pre-Rig Down Safety Meeting	12/25/2011 16:10							Including entire cement crew.
Rig-Down Equipment	12/25/2011 16:15							
Rig-Down Completed	12/25/2011 17:30							
Pre-Convoy Safety Meeting	12/25/2011 17:45							Including entire cement crew.
Crew Leave Location	12/25/2011 18:00							Crew leave location for Service Center or another location.
Other	12/25/2011 18:00							Thank You for using Halliburton. Ed Arnold and Crew.

WILLIAMS - RWF 12-32

9.625 Surface

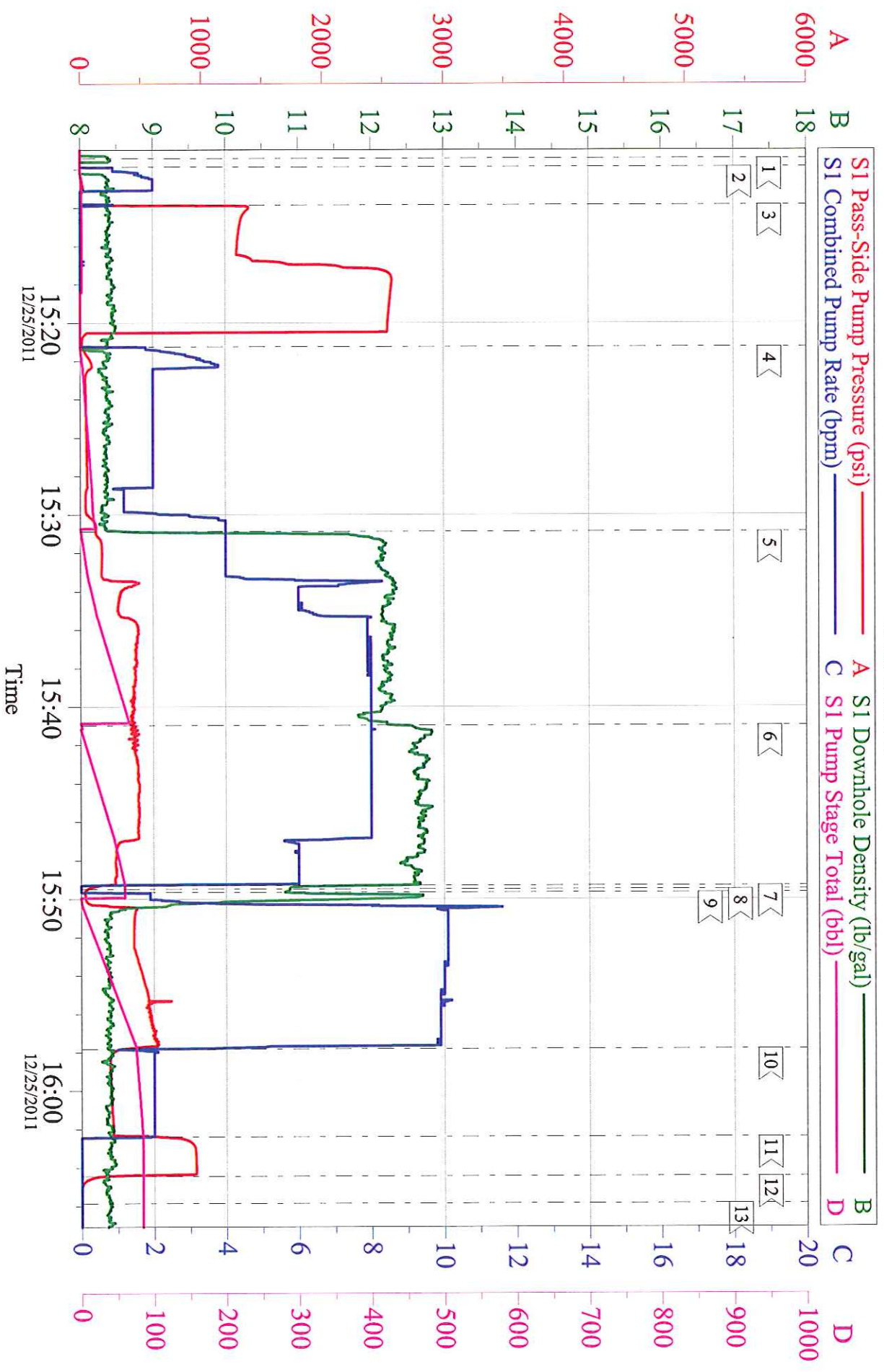


Local Event Log								
1	Strt Job	15:11:25	2	Fill Lines	15:11:52	3	Test Lines	15:13:51
4	H2O Spacer	15:21:14	5	Lead Cement	15:30:53	6	Tail Cement	15:40:58
7	Shut Down	15:49:18	8	Drop Plug	15:49:29	9	H2O Displacement	15:49:39
10	Slow Rate	15:57:49	11	Bump Plug	16:02:23	12	Check Floats	16:04:27
13	End Job	16:05:51						

Customer:	Williams	Job Date:	25-Dec-2011	Sales Order #:	9135091
Well Description:	RWF 12-32	Job Type:	Surface	ADC Used:	Yes
Company Rep:	Kenny Bascomb	Cement Supervisor:	Ed Arnold	Elite #2:	Reggie Miller

WILLIAMS - RWF 12-32

9.625 Surface



Customer: Williams	Job Date: 25-Dec-2011	Sales Order #: 9135091
Well Description: RWF 12-32	Job Type: Surface	ADC Used: Yes
Company Rep: Kenny Bascomb	Cement Supervisor: Ed Arnold	Elite #2: Reggie Miller