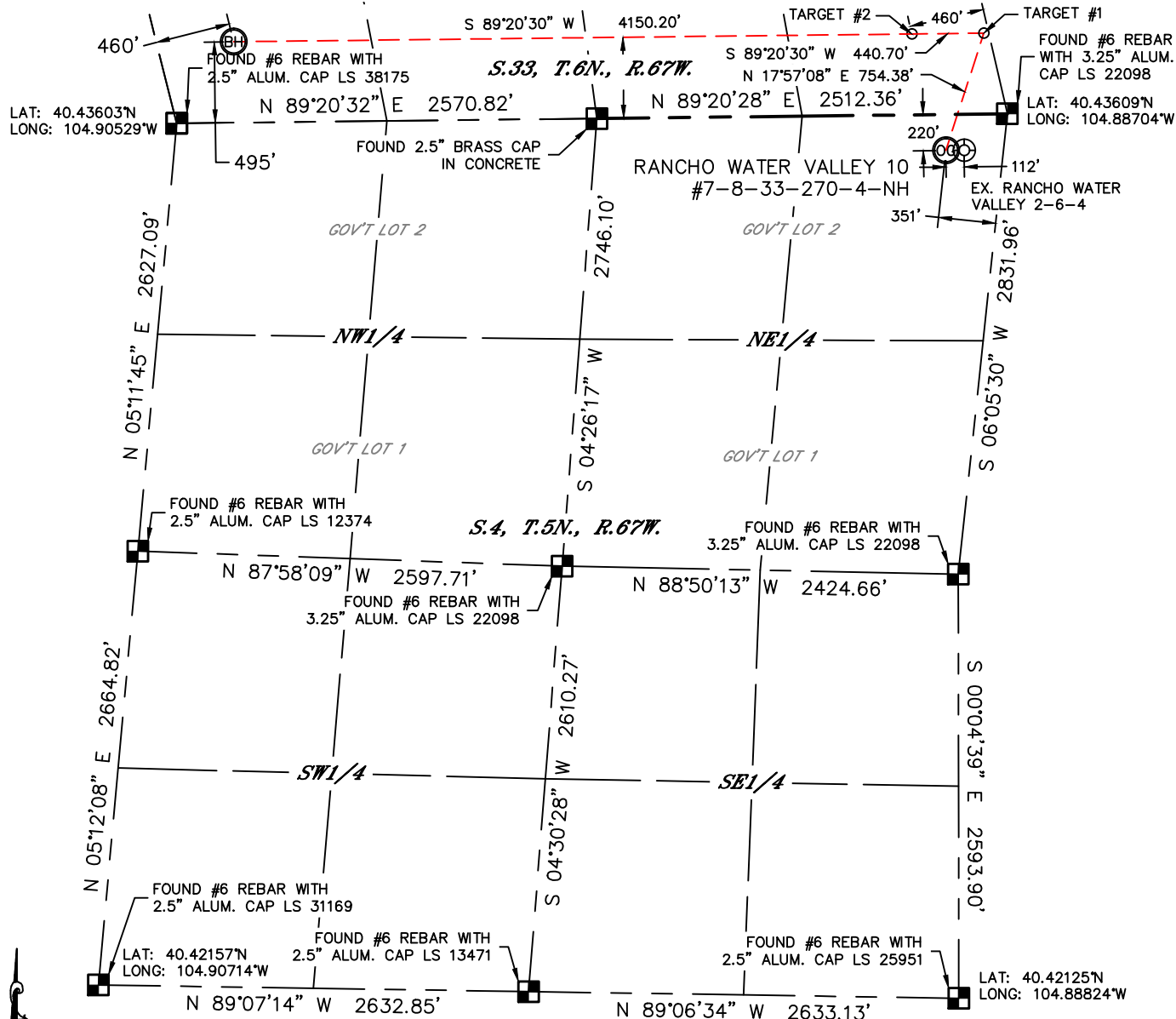


# WELL LOCATION CERTIFICATE

THIS MAP DOES NOT REPRESENT A BOUNDARY SURVEY

SECTION: 4  
TOWNSHIP: 5N  
RANGE: 67W



In accordance with a request from Michael Cuba with TEKTON ENERGY, LLC, Lat40', Inc. has determined the surface location of the RANCHO WATER VALLEY 10 #7-8-33-270-4-NH to be 220' from the NORTH line and 351' from the EAST line as measured at right angles from the section lines of Section 4, Township 5 North, Range 67 West and the bottom hole to be 495' from the SOUTH line and 460' from the WEST line as measured at right angles from the section lines of Section 33, Township 6 North, Range 67 West of the Sixth Principal Meridian, County of Weld, State of Colorado.

I hereby state that this Well Location Certificate was prepared by me, or under my direct supervision, that the fieldwork was completed on 9/26/2012, for and on behalf of TEKTON ENERGY, LLC. That this is not a Land Survey Plat or an Improvement Survey Plat, and that it is not to be relied upon for establishment of fence, building, or other future improvement lines.

NOTE:

- 1) Bearings shown are Grid Bearings of the Colorado State Plane Coordinate System, North Zone, North American Datum 1983/2007. The lineal dimensions as contained herein are based upon the "U.S. Survey Foot."
- 2) Ground elevations are based on an observed GPS elevation (NAVD 1988 DATUM).
- 3) IMPROVEMENTS: See LOCATION DRAWING for all visible improvements within 400' of disturbed area.
- 4) SURFACE USE: EX. WELL PAD / RANGELAND
- 5) INSTRUMENT OPERATOR: WYATT HALL

## NOTE

According to Colorado law, you must commence any legal action based upon any defect in this W.L.C. within three years after you discover such defect. In no event, may any action based upon any defect in this survey be commenced more than ten years after the date of the certificate shown hereon. (13-80-105 C.R.S.)

SURFACE LOCATION

LAT: 40.43548°N  
LONG: 104.88839°W  
PDOP: 2.8  
ELEV: 4775'  
1/4,1/4: NE1/4NE1/4  
NEAREST PROPERTY LINE: 220' N

TARGET #1

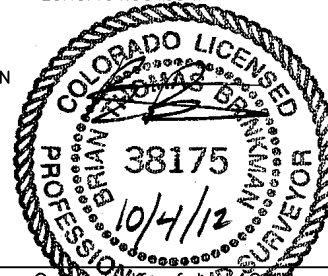
LAT: 40.43745°N  
LONG: 104.88754°W

TARGET #2

LAT: 40.43744°N  
LONG: 104.88912°W

BOTTOM HOLE

LAT: 40.43739°N  
LONG: 104.90403°W



*SHEET 1 OF 2*

Brian T. Brinkman—On the staff of L&L, Inc.  
Colorado Licensed Professional Surveyor No. 38175  
DATE: 9/28/2012  
PROJECT#: 2011315

PROJECT#: 2011315

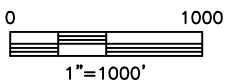
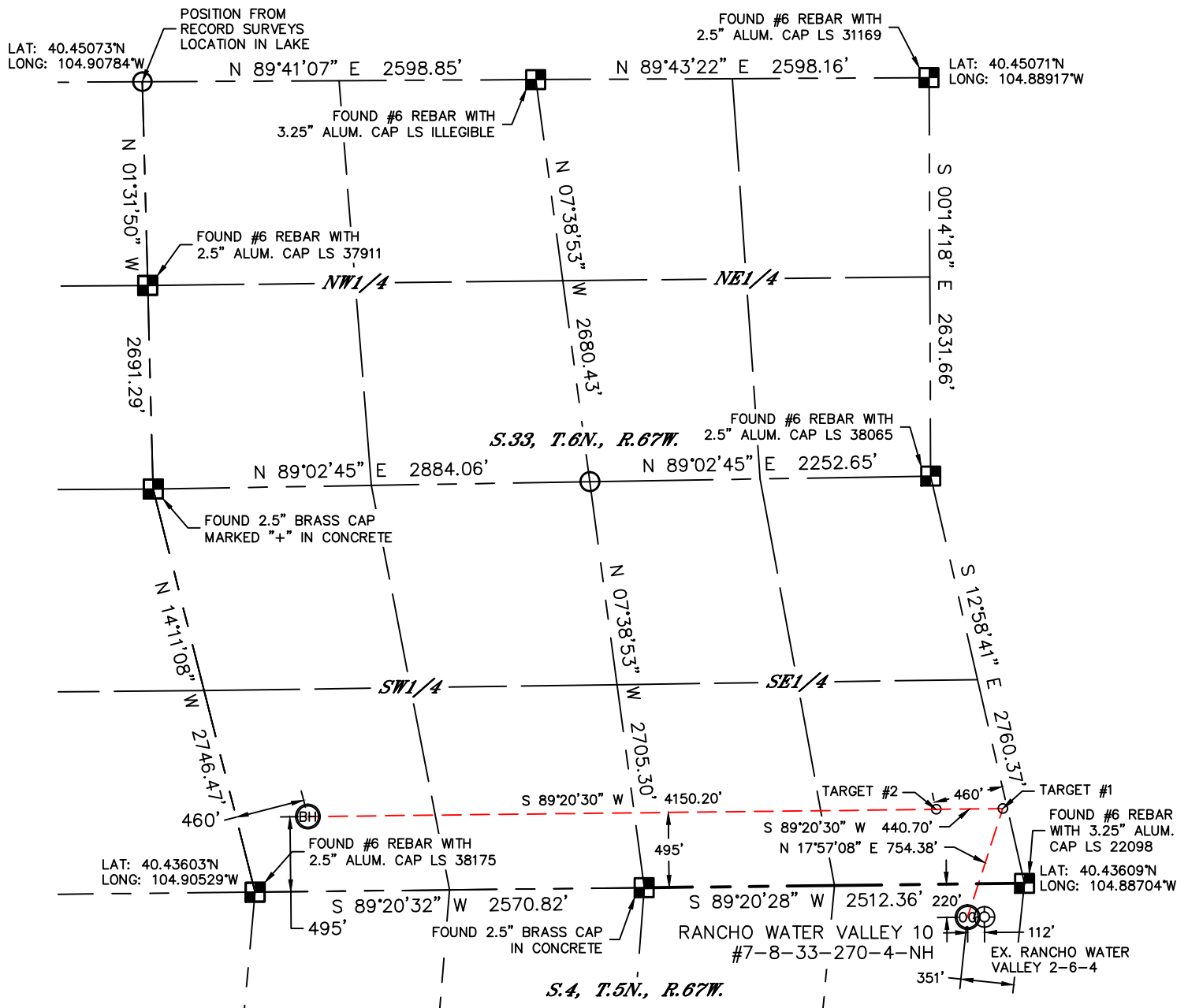


Lat40°, Inc. 1635 Foxtrail Drive, Suite 325 Loveland, CO 970-776-3321

# WELL LOCATION CERTIFICATE

THIS MAP DOES NOT REPRESENT A BOUNDARY SURVEY

SECTION: 4  
TOWNSHIP: 5N  
RANGE: 67W



**NOTE**  
According to Colorado law, you must commence any legal action based upon any defect in this W.L.C. within three years after you discover such defect. In no event, may any action based upon any defect in this survey be commenced more than ten years after the date of the certificate shown hereon. (13-80-105 C.R.S.)

## LEGEND

- = ALIQUOT MONUMENT AS DESCRIBED
- = CALCULATED POSITION



## SHEET 2 OF 2

Brian T. Brinkman—On behalf of Lat40°, Inc.  
Colorado Licensed Professional  
Land Surveyor No. 38175  
DATE: 9/28/2012  
PROJECT#: 2011315

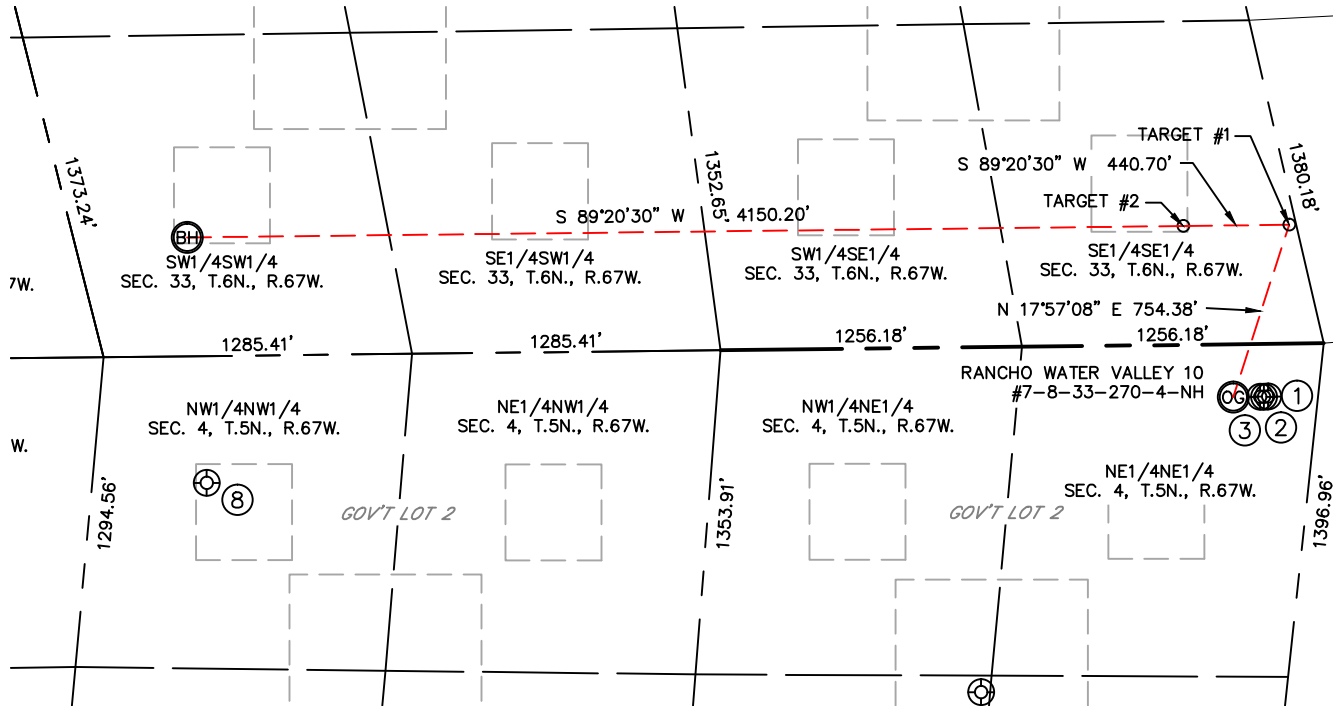


Lat40°, Inc. 1635 Foxtrail Drive, Suite 325 Loveland, CO 970-776-3321

# SITE SKETCH

RANCHO WATER VALLEY 10  
#7-8-33-270-4-NH

SECTION: 4  
TOWNSHIP: 5N  
RANGE: 67W



①

RANCHO WATER VALLEY  
3-9-4  
NE1/4NE1/4  
220' FNL  
207' FEL  
LAT-40.43549°N  
LONG-104.88787°W  
PDOP:1.0  
ELEV: 4774'

②

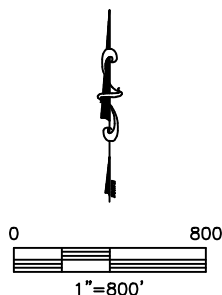
RANCHO WATER VALLEY  
2-8-4  
NE1/4NE1/4  
220' FNL  
223' FEL  
LAT-40.43548°N  
LONG-104.88793°W  
PDOP:1.0  
ELEV: 4775'

③

RANCHO WATER VALLEY  
2-6-4  
NE1/4NE1/4  
220' FNL  
239' FEL  
LAT-40.43548°N  
LONG-104.88799°W  
PDOP:1.0  
ELEV: 4775'

⑧

PAVISTMA 4-23  
NW1/4NW1/4  
528' FNL  
475' FWL  
LAT-40.43007°N  
LONG-104.90434°W  
PDOP: 4.0  
ELEV: 4868'



DATE: 9/28/2012  
PROJECT#: 2011315