



Lat40°, Inc. 1635 Foxtrail Drive, Suite 325 Loveland, CO 970-776-3321

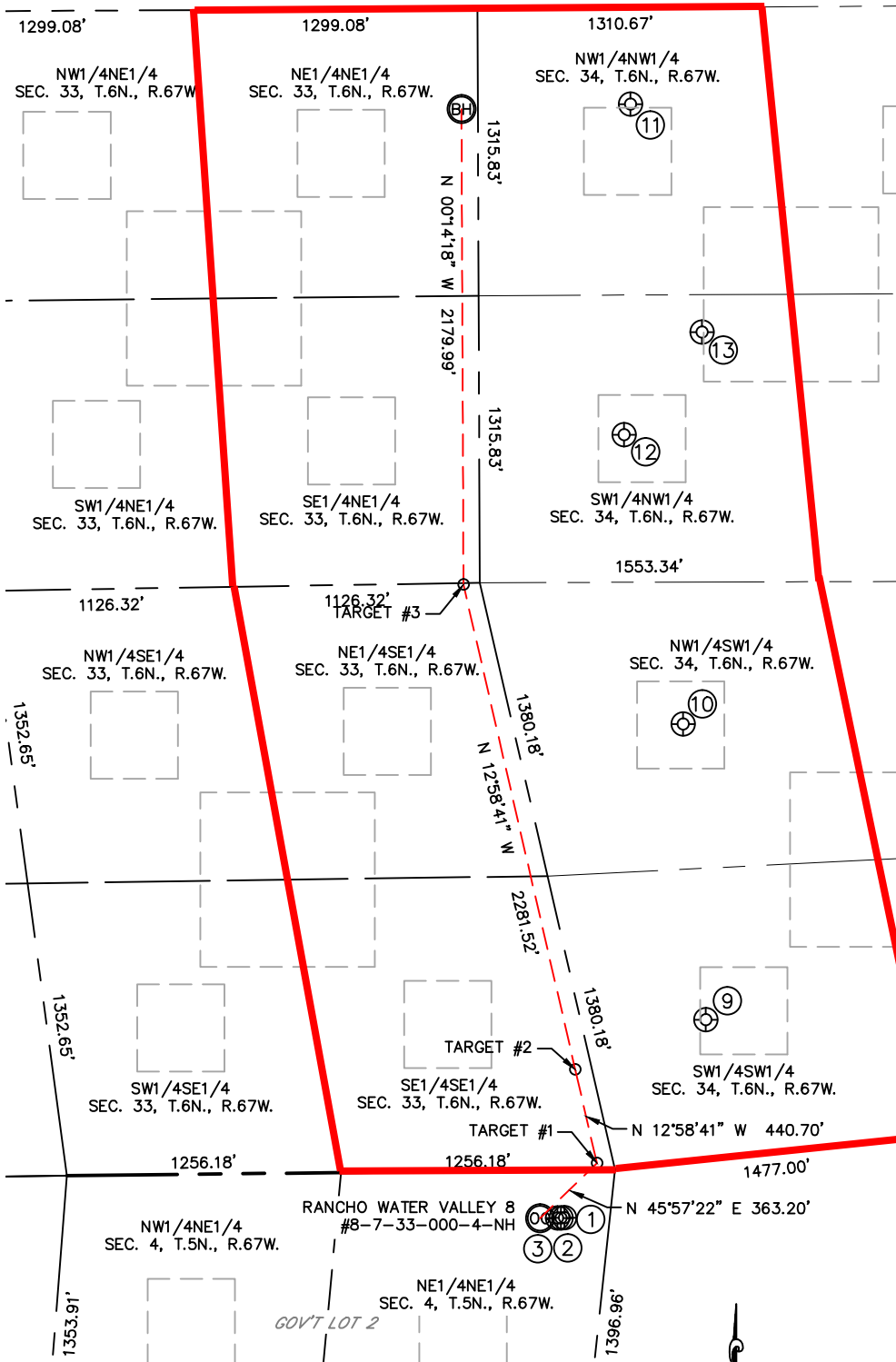
SITE SKETCH

RANCHO WATER VALLEY 8

#8-7-33-000-4-NH

SECTION: 4
TOWNSHIP: 5N
RANGE: 67W

PROPOSED SPACING UNIT



- | | |
|--|--|
| ① RANCHO WATER VALLEY 3-9-4 NE1/4NE1/4 220' FNL 207' FEL LAT-40.43549°N LONG-104.88787°W PDOP: 1.0 ELEV: 4774' | ② RANCHO WATER VALLEY 2-8-4 NE1/4NE1/4 220' FNL 223' FEL LAT-40.43548°N LONG-104.88793°W PDOP: 1.0 ELEV: 4775' |
| ③ RANCHO WATER VALLEY 2-6-4 NE1/4NE1/4 220' FNL 239' FEL LAT-40.43548°N LONG-104.88799°W PDOP: 1.0 ELEV: 4775' | ⑨ KODAK 34-33 SW1/4SW1/4 642' FSL 559' FWL LAT-40.43797°N LONG-104.88553°W PDOP: 2.8 ELEV: 4761' |
| ⑩ KODAK 34-32 NW1/4SW1/4 2001' FSL 761' FWL LAT-40.44169°N LONG-104.88587°W PDOP: 2.1 ELEV: 4747' | ⑪ KODAK 34-22 NW1/4NW1/4 442' FNL 699' FWL LAT-40.44949°N LONG-104.88666°W PDOP: 2.1 ELEV: 4748' |
| ⑫ KODAK 34-23 SW1/4NW1/4 1958' FNL 663' FWL LAT-40.44533°N LONG-104.88681°W PDOP: 3.7 ELEV: 4745' | ⑬ KODAK 34-25 SW1/4NW1/4 1490' FNL 1023' FWL LAT-40.44662°N LONG-104.88551°W PDOP: 2.9 ELEV: 4745' |