

T7N, R93W, 6th P.M.

5/8" Rebar, 0.6'
High, E-W Fence
Lat: 40.565178°
Long: 107.829186°

2012 UELS 2 1/2"
Alum. Cap. Flush w/Ground
Lat: 40.565181°
Long: 107.819672°

N89°59'23"E - 2644.53' (Meas.)

N89°55'E - 2640.00' (G.L.O.)

CULVERWELL FEDERAL #11-15
Elev. Ungraded Ground = 6430'

898'

1143'

600' BUFFER LINE

LEASE
LINE

Lot 1

Lot 2

15

S00°04'54"E - 5280.84' (Meas.)

NOTE:
SEE ADDENDUM TO LEGAL PLAT FOR
EXISTING IMPROVEMENTS WITHIN 400'
OF THE PROPOSED DISTURBANCE.

Lot 4

Lot 3

5/8" Rebar, 0.7'
High, E-W Fence
Lat: 40.550686°
Long: 107.829156°

Set Marked Stone
Lat: 40.550706°
Long: 107.819642°

Set Marked Stone
Lat: 40.550731°
Long: 107.810164°

N89°52'02"E - 2644.57' (Meas.)

N89°47'50"E - 2634.61' (Meas.)

N00°02'W - 5280.00' (G.L.O.)

QUICKSILVER RESOURCES, INC.

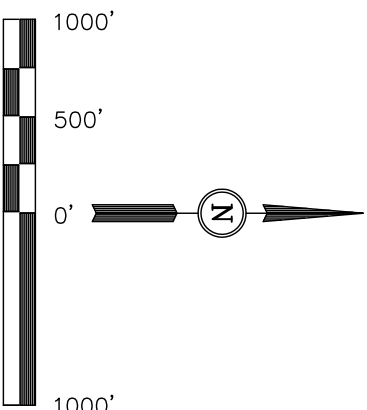
Well location, CULVERWELL FEDERAL #11-15,
located as shown in the NW 1/4 NW 1/4 of
Section 15, T7N, R93W, 6th P.M., Moffat County,
Colorado.

BASIS OF ELEVATION

SPOT ELEVATION LOCATED AT THE NORTHEAST CORNER OF
SECTION 10, T6N, R93W, 6th P.M. TAKEN FROM THE HORSE
GULCH QUADRANGLE, COLORADO, MOFFAT COUNTY, 7.5
MINUTE QUAD (TOPOGRAPHIC MAP) PUBLISHED BY THE
UNITED STATES DEPARTMENT OF THE INTERIOR, GEOLOGICAL
SURVEY. SAID ELEVATION IS MARKED AS BEING 6246 FEET.

BASIS OF BEARINGS

BASIS OF BEARINGS IS A G.P.S. OBSERVATION.



CERTIFICATE

THIS IS TO CERTIFY THAT THE ABOVE PLAT WAS PREPARED FROM
FIELD NOTES OF ACTUAL SURVEYS MADE BY ME OR UNDER MY
SUPERVISION AND THAT THE SAME ARE TRUE AND CORRECT TO THE
BEST OF MY KNOWLEDGE AND BELIEF.

REGISTERED LAND SURVEYOR
REGISTRATION NUMBER 1492
STATE OF COLORADO

REVISED: 06-20-12

UINTAH ENGINEERING & LAND SURVEYING
85 SOUTH 200 EAST - VERNAL, UTAH 84078

(435) 789-1017

NAD 83 (SURFACE LOCATION)	
LATITUDE = 40°33'48.59" (40.563497)	
LONGITUDE = 107°49'33.42" (107.825950)	
NAD 27 (SURFACE LOCATION)	
LATITUDE = 40°33'48.70" (40.563528)	
LONGITUDE = 107°49'31.15" (107.825319)	
STATE PLANE NAD 83	
N: 1456598.04 E: 2353835.28	
STATE PLANE NAD 27	
N: 456596.76 E: 1353993.42	

SCALE 1" = 1000'	DATE SURVEYED: 02-13-12	DATE DRAWN: 03-23-12
PARTY G.M. T.B. S.R.L.	REFERENCES G.L.O. PLAT	
WEATHER COOL	FILE QUICKSILVER RESOURCES, INC.	

LEGEND:

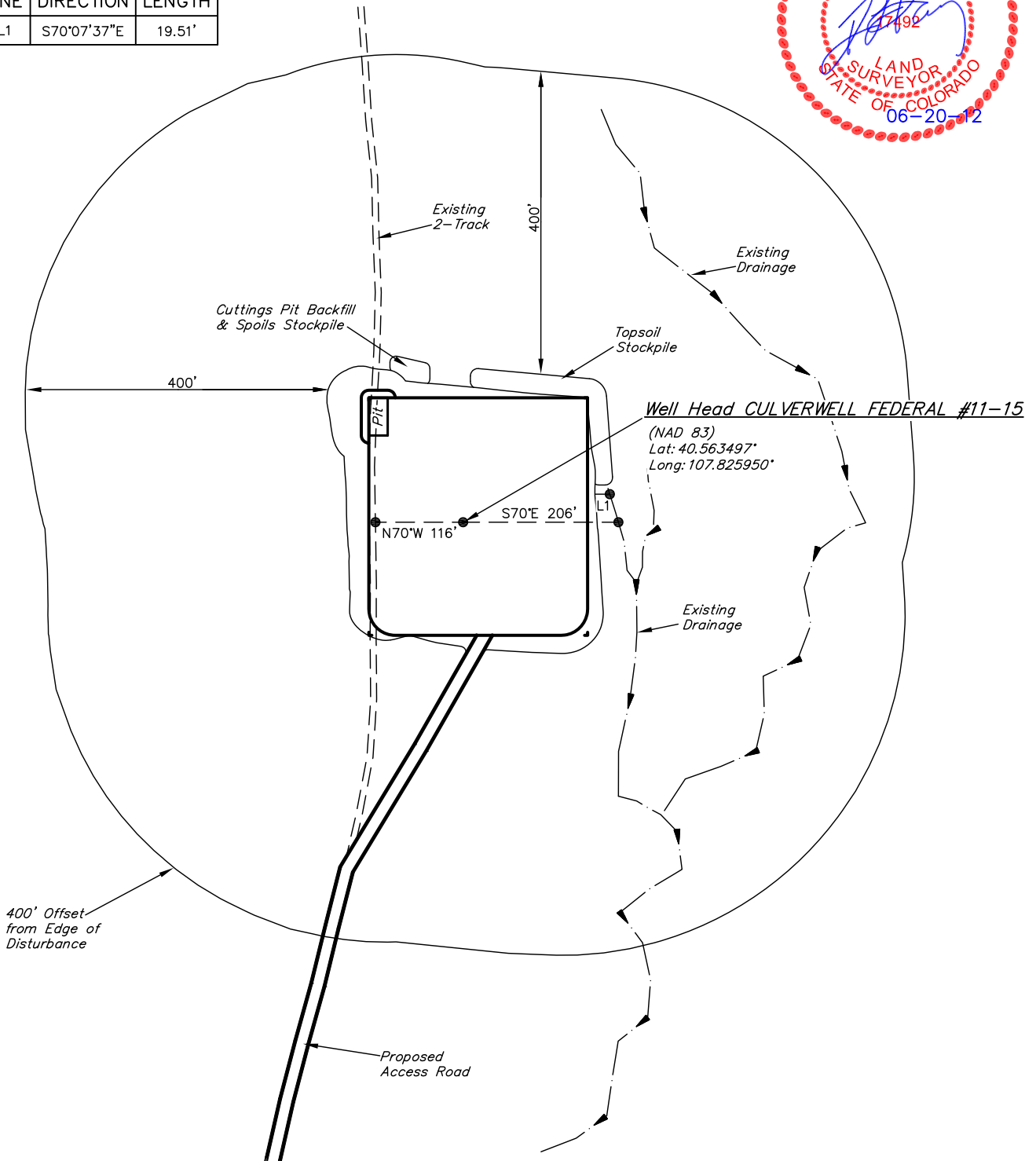
└─ = 90° SYMBOL

● = PROPOSED WELL HEAD.

▲ = SECTION CORNERS LOCATED.

CULVERWELL FEDERAL #11-15
SECTION 15, T7N, R93W, 6th P.M.
613' FNL 898' FWL

LINE TABLE		
LINE	DIRECTION	LENGTH
L1	S70°07'37"E	19.51'



UINTAH ENGINEERING & LAND SURVEYING
85 So. 200 East * Vernal, Utah 84078 * (435) 789-1017