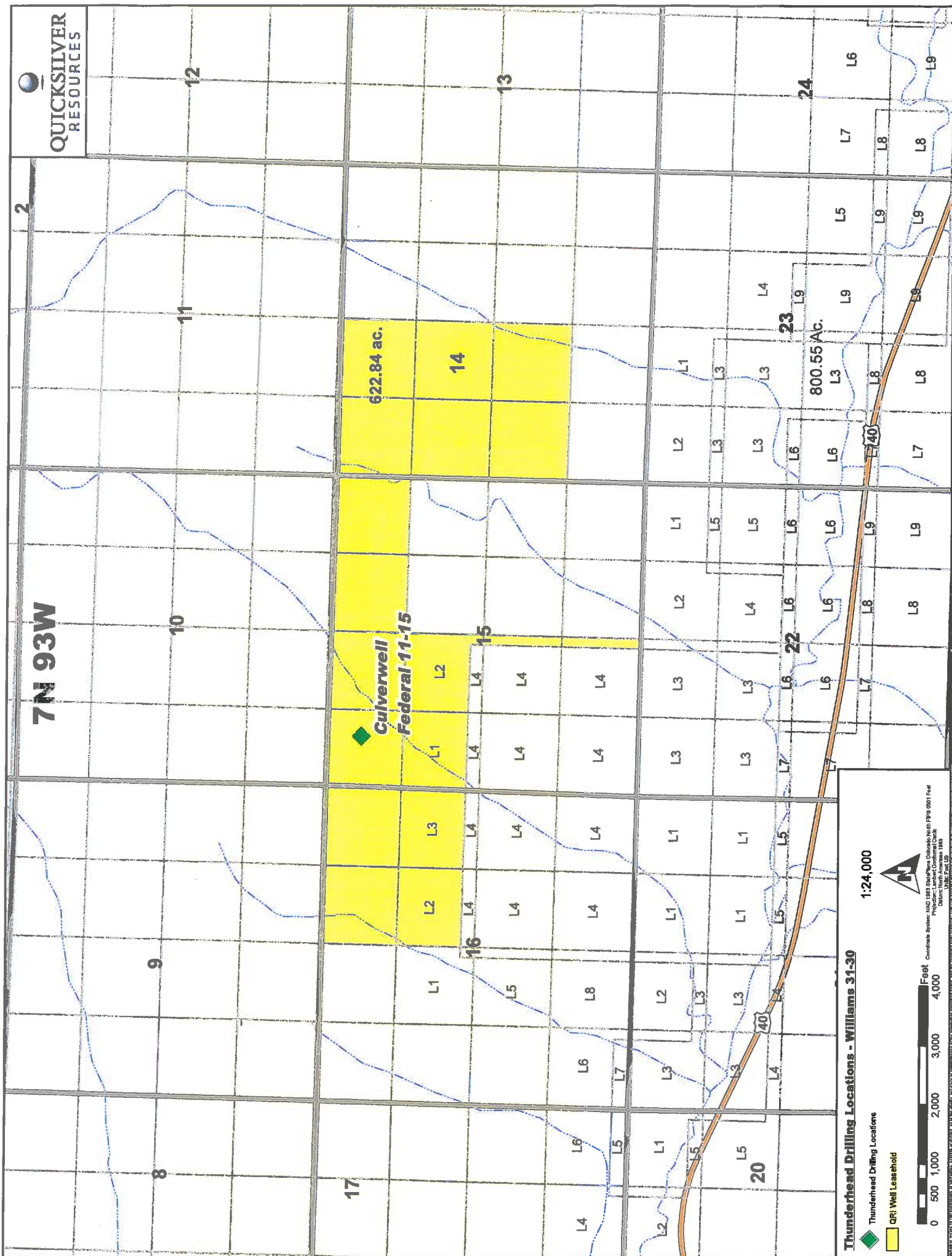


7N 93W



Thunderhead Drilling Locations - Williams 31-30

Thunderhead Drilling Locations

QRI Well Leasehold

0 500 1,000 2,000 3,000 4,000 Feet

1:24,000



Coordinate System: NAD 1983 StatePlane Colorado North FIPS 6001 Feet
Projection: Lambert Conformal Conic
Datum: NAD 1983
Units: Feet, Meters