

The Road to Excellence Starts with Safety

Sold To #: 300721	Ship To #: 2903111	Quote #:	Sales Order #: 9255570
Customer: WPX ENERGY ROCKY MOUNTAIN LLC-EBUS		Customer Rep: Bascom, Kenny	
Well Name: RWF	Well #: 341-31	API/UWI #:	
Field: Rulison	City (SAP): RIFLE	County/Parish: Garfield	State: Colorado
Lat: N 39.486 deg. OR N 39 deg. 29 min. 8.574 secs.		Long: W 107.916 deg. OR W -108 deg. 5 min. 2.936 secs.	
Contractor: CYCLONE 17		Rig/Platform Name/Num: CYCLONE 17	
Job Purpose: Cement Surface Casing			
Well Type: Development Well		Job Type: Cement Surface Casing	
Sales Person: MAYO, MARK		Srvc Supervisor: LEIST, JAMES	MBU ID Emp #: 362787

### Job Personnel

HES Emp Name	Exp Hrs	Emp #	HES Emp Name	Exp Hrs	Emp #	HES Emp Name	Exp Hrs	Emp #
DEUSSEN, EDWARD Eric	3	485182	EICKHOFF, ROBERT Edward	3	495311	LEIST, JAMES R	3	362787
VANALSTYNE, TROY L	3	420256						

### Equipment

HES Unit #	Distance-1 way	HES Unit #	Distance-1 way	HES Unit #	Distance-1 way	HES Unit #	Distance-1 way
10867322	60 mile	10998512	60 mile	11259882	60 mile	11560046	60 mile
11562538	60 mile						

### Job Hours

Date	On Location Hours	Operating Hours	Date	On Location Hours	Operating Hours	Date	On Location Hours	Operating Hours
2-12-12	6	3						

TOTAL Total is the sum of each column separately

### Job

### Job Times

Formation Name	Formation Depth (MD)	Top	Bottom	Date	Time	Time Zone
				Called Out	12 - Feb - 2012	12:00 MST
Form Type			BHST	On Location	12 - Feb - 2012	17:00 MST
Job depth MD	1125. ft		Job Depth TVD	Job Started	12 - Feb - 2012	21:19 MST
Water Depth			Wk Ht Above Floor	Job Completed	12 - Feb - 2012	22:06 MST
Perforation Depth (MD)	From		To	Departed Loc	12 - Feb - 2012	23:45 MST

### Well Data

Description	New / Used	Max pressure psig	Size in	ID in	Weight lbm/ft	Thread	Grade	Top MD ft	Bottom MD ft	Top TVD ft	Bottom TVD ft

### Sales/Rental/3<sup>rd</sup> Party (HES)

Description	Qty	Qty uom	Depth	Supplier
PLUG,CMTG, TOP, 9 5/8, HW, 8.16 MIN/9.06 MA	1	EA		

### Tools and Accessories

Type	Size	Qty	Make	Depth	Type	Size	Qty	Make	Depth	Type	Size	Qty	Make
Guide Shoe					Packer					Top Plug	9.625	1	
Float Shoe					Bridge Plug					Bottom Plug			
Float Collar					Retainer					SSR plug set			
Insert Float										Plug Container	9.625	1	
Stage Tool										Centralizers			

### Miscellaneous Materials

Gelling Agt	Conc	Surfactant	Conc	Acid Type	Qty	Conc	%
Treatment Fld	Conc	Inhibitor	Conc	Sand Type	Size	Qty	

### Fluid Data

Stage/Plug #: 1										
Fluid #	Stage Type	Fluid Name	Qty	Qty uom	Mixing Density lbm/gal	Yield ft <sup>3</sup> /sk	Mix Fluid Gal/sk	Rate bbl/min	Total Mix Fluid Gal/sk	

Stage/Plug #: 1									
Fluid #	Stage Type	Fluid Name	Qty	Qty uom	Mixing Density lbm/gal	Yield ft <sup>3</sup> /sk	Mix Fluid Gal/sk	Rate bbl/min	Total Mix Fluid Gal/sk
1	Fresh Water		20.00	bbl	8.33	.0	.0	4	
2	VersaCem Lead	VERSACEM (TM) SYSTEM (452010)	160.0	sacks	12.3	2.38	13.75	8	13.75
	13.75 Gal	FRESH WATER							
3	VersaCem Tail	VERSACEM (TM) SYSTEM (452010)	160.0	sacks	12.8	2.11	11.75	8	11.75
	11.75 Gal	FRESH WATER							
4	Displacement Fluid		85.00	bbl	8.34	.0	.0	10	
Calculated Values		Pressures		Volumes					
Displacement	85	Shut In: Instant		Lost Returns	0	Cement Slurry	127	Pad	
Top Of Cement	SURFACE	5 Min		Cement Returns	35	Actual Displacement	85	Treatment	
Frac Gradient		15 Min		Spacers	20	Load and Breakdown		Total Job	
Rates									
Circulating		Mixing	8	Displacement	10	Avg. Job			
Cement Left In Pipe	Amount	44.44 ft	Reason	Shoe Joint					
Frac Ring # 1 @	ID	Frac ring # 2 @	ID	Frac Ring # 3 @	ID	Frac Ring # 4 @	ID		
The Information Stated Herein Is Correct				Customer Representative Signature					

*The Road to Excellence Starts with Safety*

Sold To #: 300721	Ship To #: 2903111	Quote #:	Sales Order #: 9255570
Customer: WPX ENERGY ROCKY MOUNTAIN LLC-EBUS		Customer Rep: Bascom, Kenny	
Well Name: RWF	Well #: 341-31	API/UWI #:	
Field: Rulison	City (SAP): RIFLE	County/Parish: Garfield	State: Colorado
<b>Legal Description:</b>			
Lat: N 39.486 deg. OR N 39 deg. 29 min. 8.574 secs.		Long: W 107.916 deg. OR W -108 deg. 5 min. 2.936 secs.	
Contractor: CYCLONE 17		Rig/Platform Name/Num: CYCLONE 17	
Job Purpose: Cement Surface Casing			Ticket Amount:
Well Type: Development Well		Job Type: Cement Surface Casing	
Sales Person: MAYO, MARK		Srvc Supervisor: LEIST, JAMES	MBU ID Emp #: 362787

Activity Description	Date/Time	Cht #	Rate bbl/min	Volume bbl		Pressure psig		Comments
				Stage	Total	Tubing	Casing	
Call Out	02/12/2012 12:00							
Pre-Convoy Safety Meeting	02/12/2012 14:30							WITH ALL HES PERSONNEL
Arrive At Loc	02/12/2012 17:00							RIG RUNNING CASING
Pre-Rig Up Safety Meeting	02/12/2012 18:30							WITH ALL ON HES PERSONNEL
Rig-Up Completed	02/12/2012 19:30							RIG CIRULATED FOR 30 MIN. PRIOR TO CMT JOB, GOOD CIRULATION THROUGHOUT JOB
Pre-Job Safety Meeting	02/12/2012 21:00							WITH ALL ON LOCATION PERSONNEL
Start Job	02/12/2012 21:19							TP- 1125.19, S.J.-44.44, TD-1133, HOLE-13 1/2, MUD-10, 12 CENT
Pressure Test	02/12/2012 21:20							4886 PSI
Pump Spacer	02/12/2012 21:23		4	20			180.0	FRESH WATER
Pump Lead Cement	02/12/2012 21:32		8	67			285.0	160 SKS, 12.3 PPG, 2.38 FT3/SK, 13.75 GAL/SK
Pump Tail Cement	02/12/2012 21:41		8	60			300.0	160 SKS, 12.8 PPG, 2.11 FT3/SK, 11.75 GAL/SK
Shutdown	02/12/2012 21:49							TO DROP TOP PLUG
Drop Top Plug	02/12/2012 21:50							PLUG AWAY
Pump Displacement	02/12/2012 21:51		10	85			510.0	FRESH WATER, 35 BBLs CMT TO SURFACE

Sold To #: 300721

Ship To #: 2903111

Quote #:

Sales Order #:

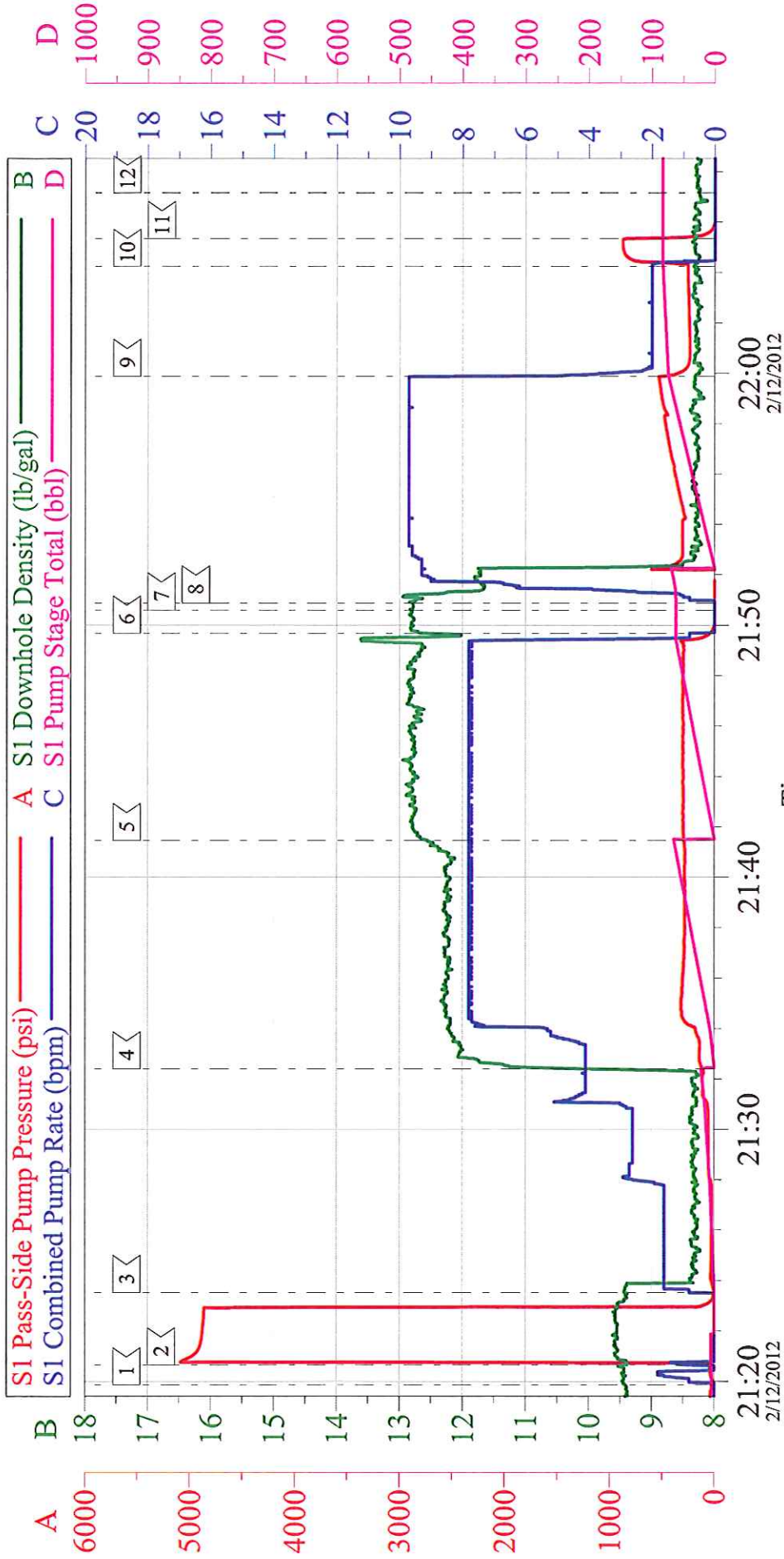
9255570

SUMMIT Version: 7.3.014

Friday, February 17, 2012 10:39:00

Activity Description	Date/Time	Cht #	Rate bbl/min	Volume bbl		Pressure psig		Comments
				Stage	Total	Tubing	Casing	
Slow Rate	02/12/2012 21:59		2	75			270.0	TO BUMP PLUG
Bump Plug	02/12/2012 22:04		2	85			780.0	PLUG BUMPED
Check Floats	02/12/2012 22:05							FLOATS ARE HOLDING
End Job	02/12/2012 22:06							
Pre-Rig Down Safety Meeting	02/12/2012 22:20							WITH ALL HES PERSONNEL
Rig-Down Completed	02/12/2012 23:30							
Pre-Convoy Safety Meeting	02/12/2012 23:45							WITH ALL HES PERSONNEL
Comment	02/12/2012 23:45							THANKYOU FOR USING HALLIBURTON CEMENT, JAMES LEIST AND CREW

# WPX ENERGY RWF 341-31 SURFACE CASING



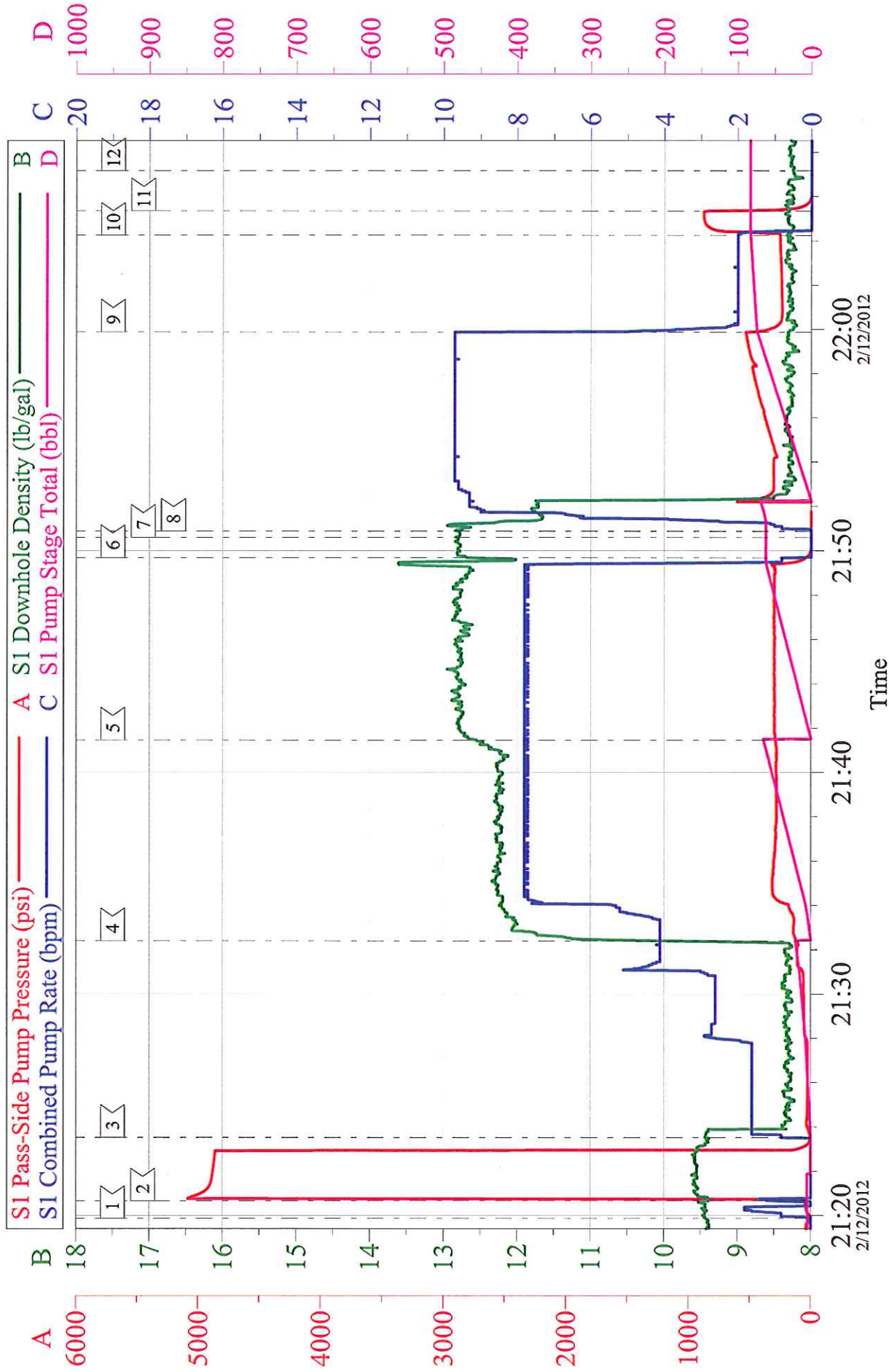
Local Event Log

1	START JOB	21:19:52	2	PRESSURE TEST	21:20:39	3	PUMP SPACER	21:23:32
4	PUMP LEAD CEMENT	21:32:24	5	PUMP TAIL CEMENT	21:41:27	6	SHUT DOWN	21:49:41
7	DROP TOP PLUG	21:50:36	8	START DISPLACEMENT	21:50:52	9	SLOW RATE	21:59:52
10	BUMP PLUG	22:04:15	11	CHECK FLOATS	22:05:21	12	END JOB	22:07:10

Customer:	WPX ENERGY	Job Date:	12-Feb-2012	Sales Order #:	9255570
Well Description:	RWF 341-31	Job Type:	SURFACE	ADC Used:	YES
Company Rep:	BRENT BASCOM	Cement Supervisor:	JAMES LEIST	Elite #5:	TROY V

OptiCem v6.4.9  
17-Feb-12 10:37

# WPX ENERGY RWF 341-31 SURFACE CASING



Customer: WPX ENERGY  
Well Description: RWF 341-31  
Company Rep: BRENT BASCOM

Job Date: 12-Feb-2012  
Job Type: SURFACE  
Cement Supervisor: JAMES LEIST

Sales Order #: 9255570  
ADC Used: YES  
Elite #5: TROY V