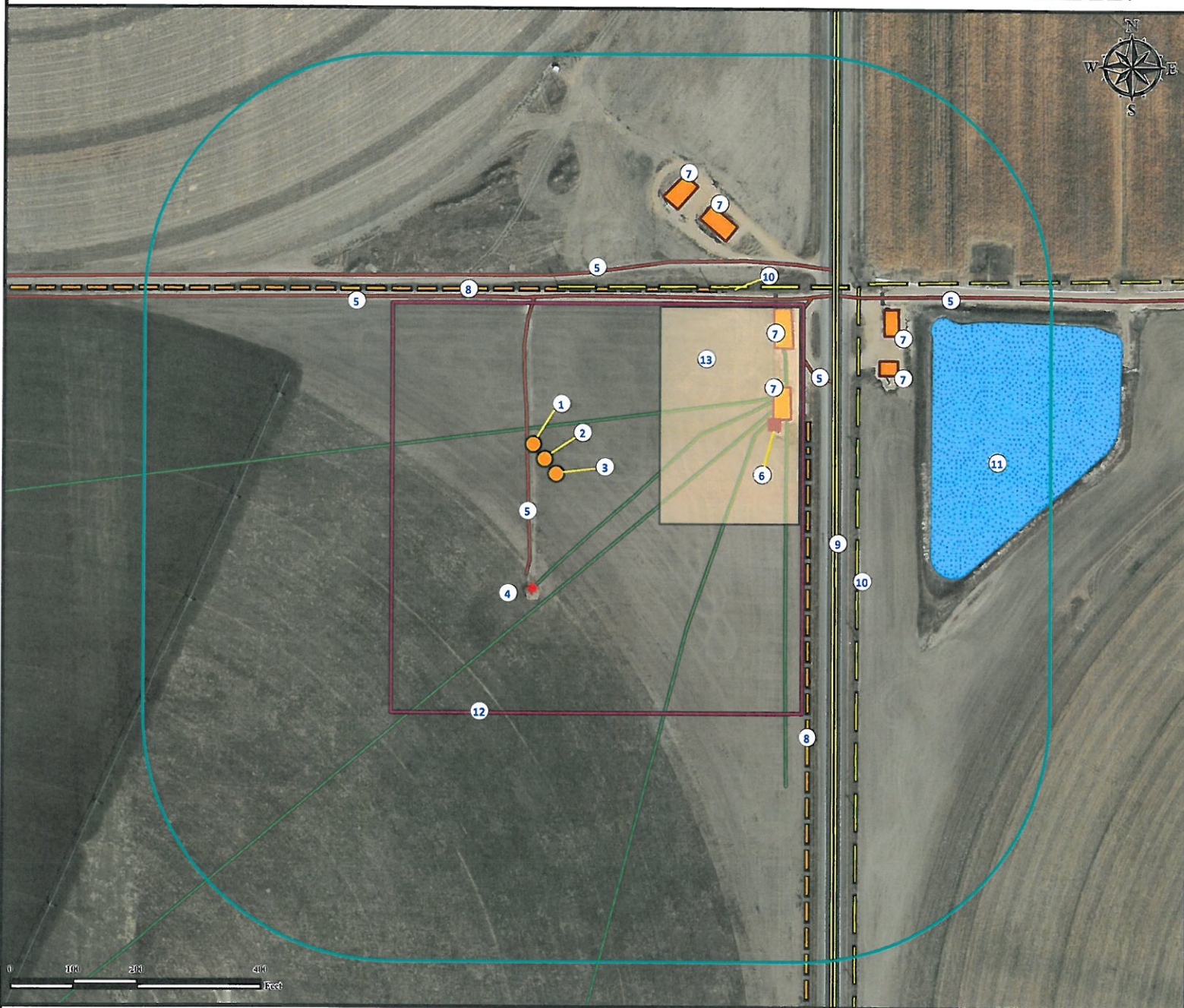


# Location Drawing DECHANT 16C-1HZ

## Horizontal Multi Well Pad

NE¼ NE¼ SECTION 36, TOWNSHIP 3 NORTH, RANGE 65 WEST OF THE 6TH PRINCIPAL MERIDIAN



1. Proposed well DECHANT 37N-E36HZ.

2. Proposed well DECHANT 16C-1HZ.

3. Proposed well DECHANT 38N-1HZ.

4. Existing well HSR-DECHANT STATE 1-36 is ±208' S.

5. Private roads are ±30' W, ±262' N, ±390' N  
±445' NE and ±537' NE.

6. Emissions control device is ±373' NE.

7. Facilities are ±372' NE, ±410' NE, ±455' NE,  
±454' NE, ±582' NE and ±556' NE.

8. Fences are ±275' N and ±423' E.

9. County road 49 is ±467' E.

10. Powerlines are ±504' E and ±278' NE.

11. Pond is ±623' E.

12. Operational disturbance area.

13. Proposed Facility to be ±185' E.

### Legend

Proposed Well	Public Road	Fence
ECD	Existing Well	Facilities Enclosure
Proposed Facility	Disturbance Area	Powerline
Pond	400' Radius	Private Road
		Underground Pipeline

### Reference Location

\*\* All Measurements are Made from  
Reference Well DECHANT 16C-1HZ \*\*  
Lat: 40.188126° Long:-104.604484° (NAD83)  
Elevation: 4804 Feet

Surface Use: Irrigated Crop



Use our resources to find yours!  
[www.petro-fs.com](http://www.petro-fs.com)  
(303) 928-7128

Field Date: 12/14/2011  
Drafting Date: 12/20/2011  
Drafter: DMM  
Checked By: BHF

### Data Sources:

- Aerial courtesy of Anadarko  
Petroleum Corporation (2010)

Prepared for:



KERR-MCGEE OIL & GAS ONSHORE LP