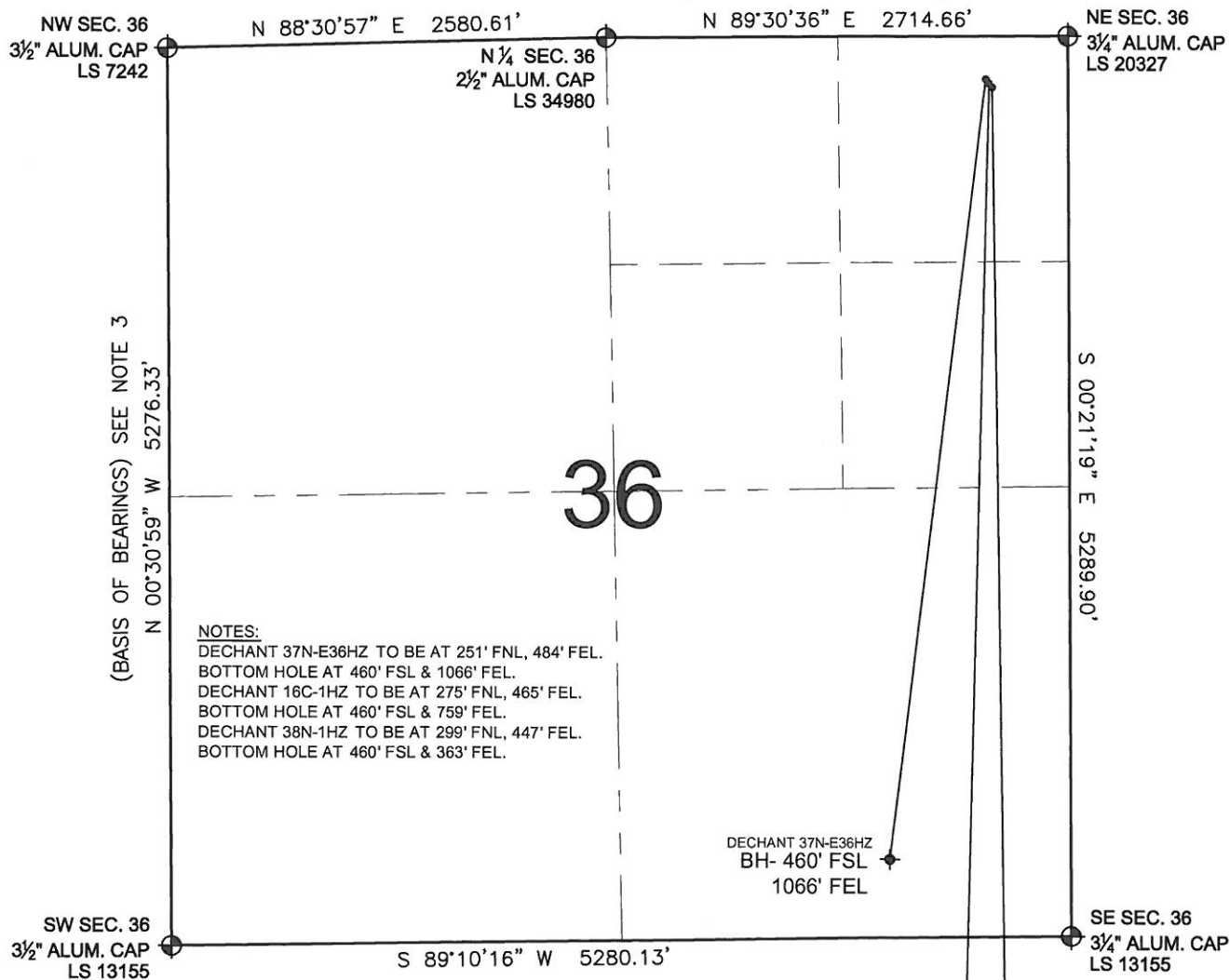


PAD DRAWING: DECHANT 3 PAD NENE

SECTION 36, TOWNSHIP 3 NORTH, RANGE 65 WEST, 6TH P.M.



NOTES:
 DECHANT 37N-E36HZ TO BE AT 251' FNL, 484' FEL.
 BOTTOM HOLE AT 460' FSL & 1066' FEL.
 DECHANT 16C-1HZ TO BE AT 275' FNL, 465' FEL.
 BOTTOM HOLE AT 460' FSL & 759' FEL.
 DECHANT 38N-1HZ TO BE AT 299' FNL, 447' FEL.
 BOTTOM HOLE AT 460' FSL & 363' FEL.

NOTES:

1. THIS FIELD SURVEY CONFORMS TO THE MINIMUM STANDARDS SET BY THE C.O.G.C.C., RULE NO. 215
2. HORIZONTAL POSITIONS AND ORTHOMETRIC ELEVATIONS SHOWN AT THE WELL HEAD, ARE BASED ON GPS-RTK POSITIONS DERIVED FROM MINIMUM 2-HOUR STATIC OBSERVATIONS CORRECTED BY THE NATIONAL GEODETIC SURVEY ONLINE POSITIONING USER SERVICE, O.P.U.S. DATUM: HORIZONTAL = NAD83/2007, VERTICAL = NAVD88
3. THE BASIS OF BEARINGS ARE STATE PLANE COORDINATE SYSTEM GRID BEARINGS SHOWN HEREON BETWEEN THE DESCRIBED THE MONUMENTS SHOWN HEREON.
4. GRID DISTANCES ARE SHOWN, AS MEASURED IN THE FIELD, WITH TIES TO WELLS MEASURED PERPENDICULAR TO SECTION LINES.

LEGEND

- = EXISTING MONUMENT ♦ = BOTTOM HOLE
 ○ = PROPOSED WELL ◆ = EXISTING WELL
 BH = BOTTOM HOLE

PREPARED BY:

PFS

Petroleum Field Services, LLC
 1801 W. 13th Ave.
 Denver, CO 80204



KERR-MCGEE OIL & GAS ONSHORE LP

FIELD DATE:
12-14-11

DRAWING DATE:
01-10-12

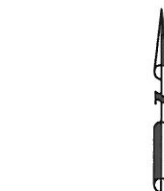
BY:
SMF

PAD NAME:
DECHANT 3 PAD NENE

SURFACE LOCATION:

WELD COUNTY, COLORADO

NE 1/4 NE 1/4, SEC. 36, T3N, R65W, 6TH P.M.



0 500 1000
 SCALE: 1"=1000'