

# Downhole Schematic for PRATT 0-2-29



Project :DJ Basin

API # :05123323770000

Surface Location :

Area : Wattenberg

County :

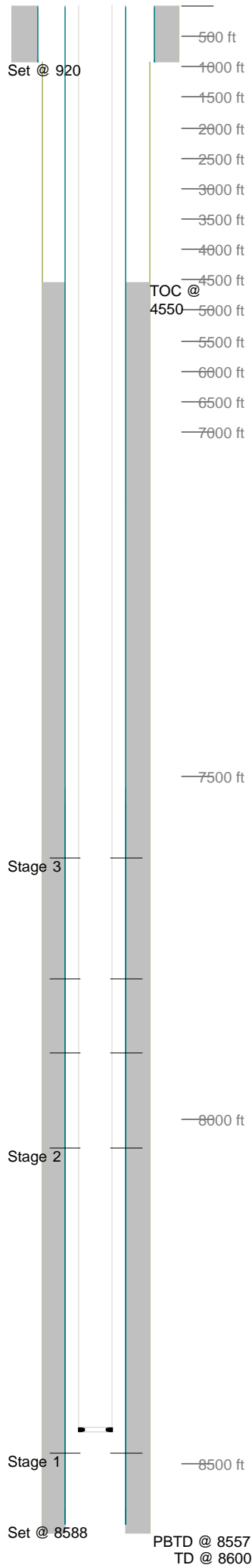
BHL :

As Of : 06/20/2012

GL : 5116.0 ft

KB to GL : 13.0 ft

KB : 5129.0 ft



### Casing Details

Section	Hole	Casing	Mass	Set At	Length	Thread	Grade	Description
Surface	12.250	8.628	24	920	1	ST&C	K55	Guide Shoe
		8.625	24	919	41	ST&C	J-55	SJ/BAFFLE
		8.625	24	878	865	ST&C	J-55	CASING
		8.6.5	24	13	13	ST&C		Landing Joint
Production	7.875	4.5	0	8,588	1		K-55	Float Shoe
		4.5	11.6	8,587	21		N-80	Shoe Jt
		4.5	0	8,566	1		K-55	Float Collar
		4.5	11.6	8,565	1,026		SB-80	Casing
		4.5	11.6	7,538	21		N-80	Marker Jt
		4.5	11.6	7,517	7,504		SB-80	Casing
		4.5	0	13	13		SB-80	Landing Jt

### Cement Details

Section	Sequence	Top	Density	Blend / Additives
Surface	Lead	0	14.5	TYPE III Cmt Class C / + 0.08 lbs/sk Static Free + 1.5% Calcium Chloride + 0.15 lbs/sk Cello Flake + 60.5% Fresh Water.
Production	Lead	4,550	12.5	Premuim Lite Cmt / +0.1% R-3 + 0.2% CD-32 +0.7% FL-52 + 0.2% ASA-301 + 6% Bentonite + 3 lbs/sx CSE-2
	Tail	7,100	13.5	(50:50 Poz,Fly Ash / Class G Cmt + 0.1% R-3 + 0.6% FL-52 + 3% Bentonite + 0.1% SM + 20% Silica Flour

### Tubing and Downhole Equipment

O.D.	Length	Depth	Description
0.000	11.50	11.50	KB
2.375	8,435.95	8,447.45	268 JTS 4.7# J55 EUE 8RD
2.375	2.10	8,449.55	Sn & Partial Pump Out Sub

### Perforations

Stage	Date	From	To	Shots	Stage	Date	From	To	Shots
Stage 1	06/04/2012	8,485	8,505	40	Stage 3	06/04/2012	7,902	7,905	12
							7,795	7,797	10
Stage 2	06/04/2012	8,040	8,057	51			7,620	7,621	6

### Frac Summary

Stage 1 : 8,485 - 8,505, 40 - 0.420" shots, 3817 bbls of Slickwater, 250000 lbs of 20/40 Sand Report Date: 06/04/2012  
 Stage 2 : 8,040 - 8,057, 51 - 0.420" shots, 4919 bbls of Slickwater, 154000 lbs of 30/50 Sand Report Date: 06/04/2012  
 Stage 3 : 7,620 - 7,905, 28 - 0.420" shots, 4754 bbls of Slickwater, 161000 lbs of 30/50 Sand Report Date: 06/05/2012

### Bridge Plug Details

Depth	Date Set	Plug Type	Sacks Cement
8,090.0	06/04/2012	CBP	0
7,955.0	06/04/2012	CBP	0

CBP at 8,090.0 drilled out 06/20/2012  
 CBP at 7,955.0 drilled out 06/20/2012