

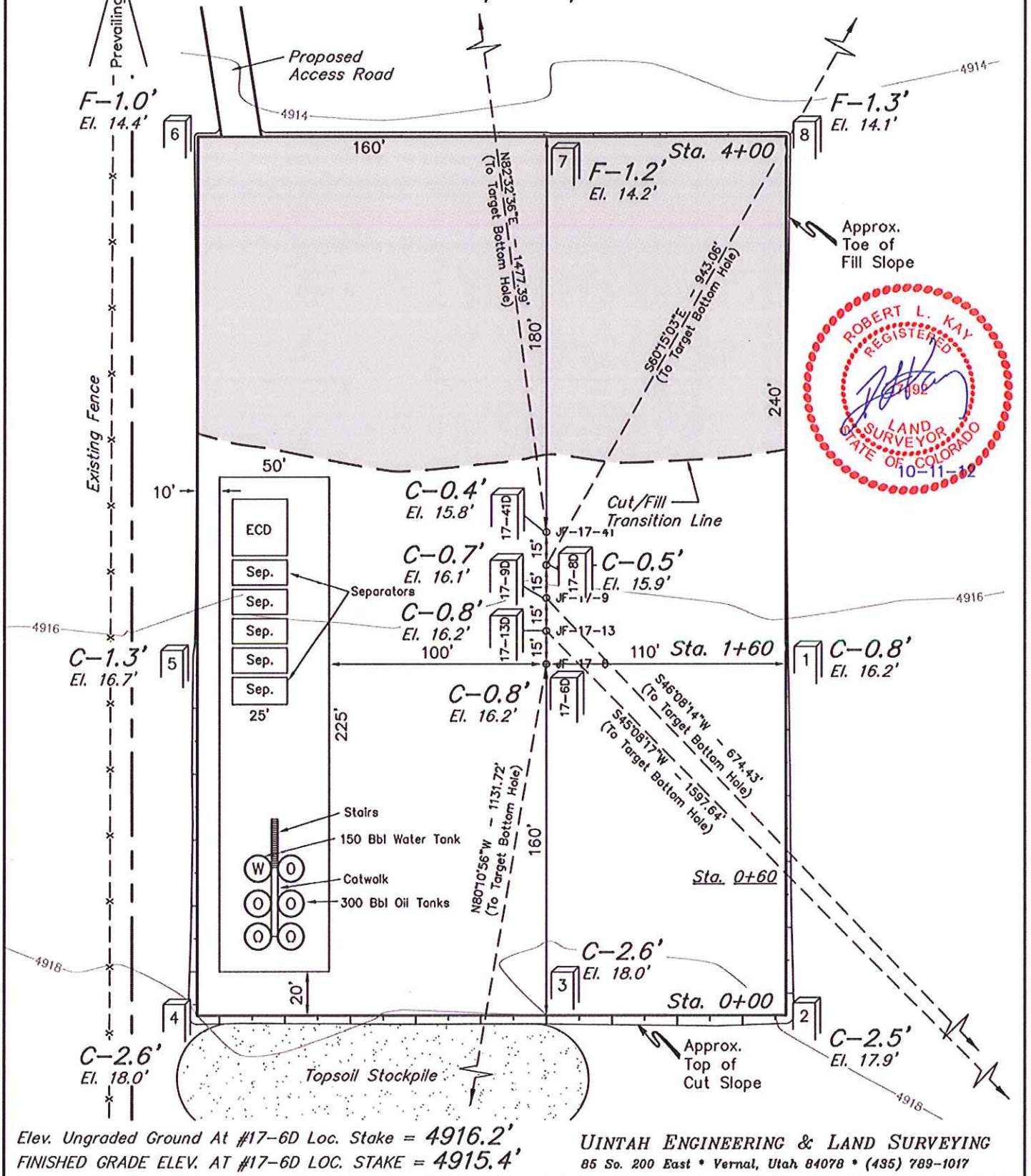
GREAT WESTERN OIL & GAS COMPANY

CONSTRUCTION LAYOUT FOR

CAMPBELL JF #17-6D, #17-13D, #17-9D,
#17-8D & #17-41D
SECTION 17, T2N, R65W, 6th P.M.
SW 1/4 NE 1/4

FIGURE #1

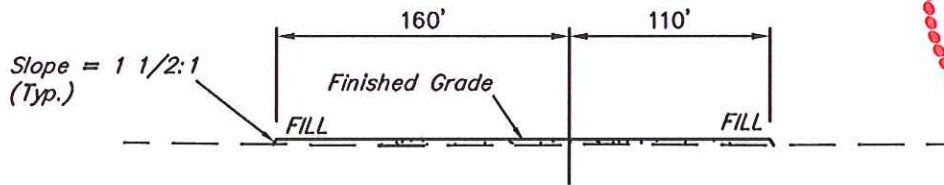
SCALE: 1" = 60'
DATE: 10-1-12
DRAWN BY: J.W.
REVISED: 10-04-12
REVISED: 10-10-12



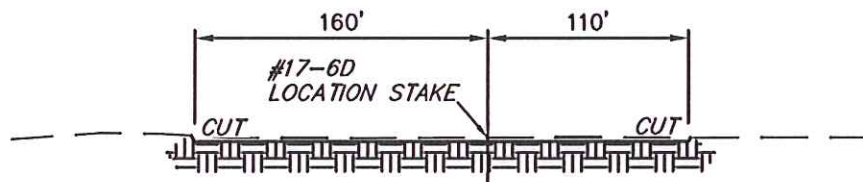
1" = 40'
X-Section
Scale
1" = 100'
DATE: 10-1-12
DRAWN BY: J.W.
REV: 10-04-12

GREAT WESTERN OIL & GAS COMPANY
CONSTRUCTION LAYOUT CROSS SECTIONS FOR
CAMPBELL JF #17-6D, #17-13D, #17-9D,
#17-8D & #17-41D
SECTION 17, T2N, R65W, 6th P.M.
SW 1/4 NE 1/4

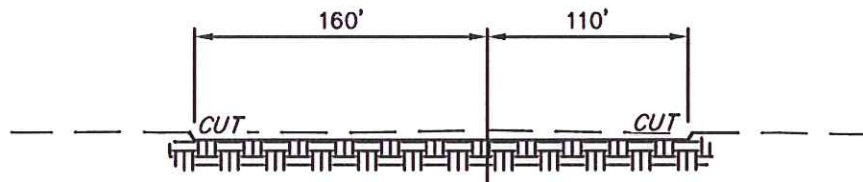
FIGURE #2



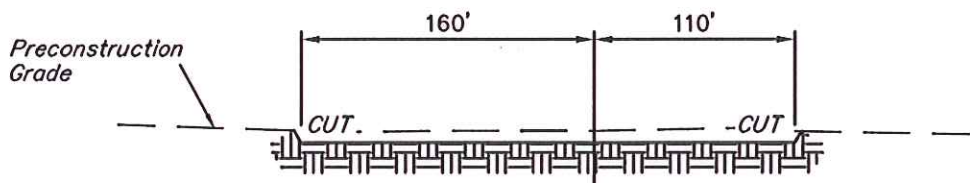
STA. 4+00



STA. 1+60



STA. 0+60



STA. 0+00

NOTE:

Topsoll should not be Stripped Below Finished Grade on Substructure Area.

APPROXIMATE ACREAGES

WELL SITE DISTURBANCE = ± 2.746 ACRES
ACCESS ROAD DISTURBANCE = ± 0.887 ACRES
TOTAL = ± 3.633 ACRES

*** NOTE:**

FILL QUANTITY INCLUDES 5% FOR COMPACTION

APPROXIMATE YARDAGES

(6") Topsoll Stripping = 2,050 Cu. Yds.
Remaining Location = 1,900 Cu. Yds.
TOTAL CUT = 3,950 CU. YDS.
FILL = 1,900 CU. YDS.

EXCESS MATERIAL = 2,050 Cu. Yds.
Topsoll = 2,050 Cu. Yds.
EXCESS UNBALANCE = 0 Cu. Yds.
(After Interim Rehabilitation)

UINTAH ENGINEERING & LAND SURVEYING
85 So. 200 East * Vernal, Utah 84078 * (435) 789-1017

FIGURE #3

SCALE: 1" = 60'

DATE: 10-1-12

DRAWN BY: J.W.

REVISÉ: 10-04-12

REVISÉ: 10-10-12

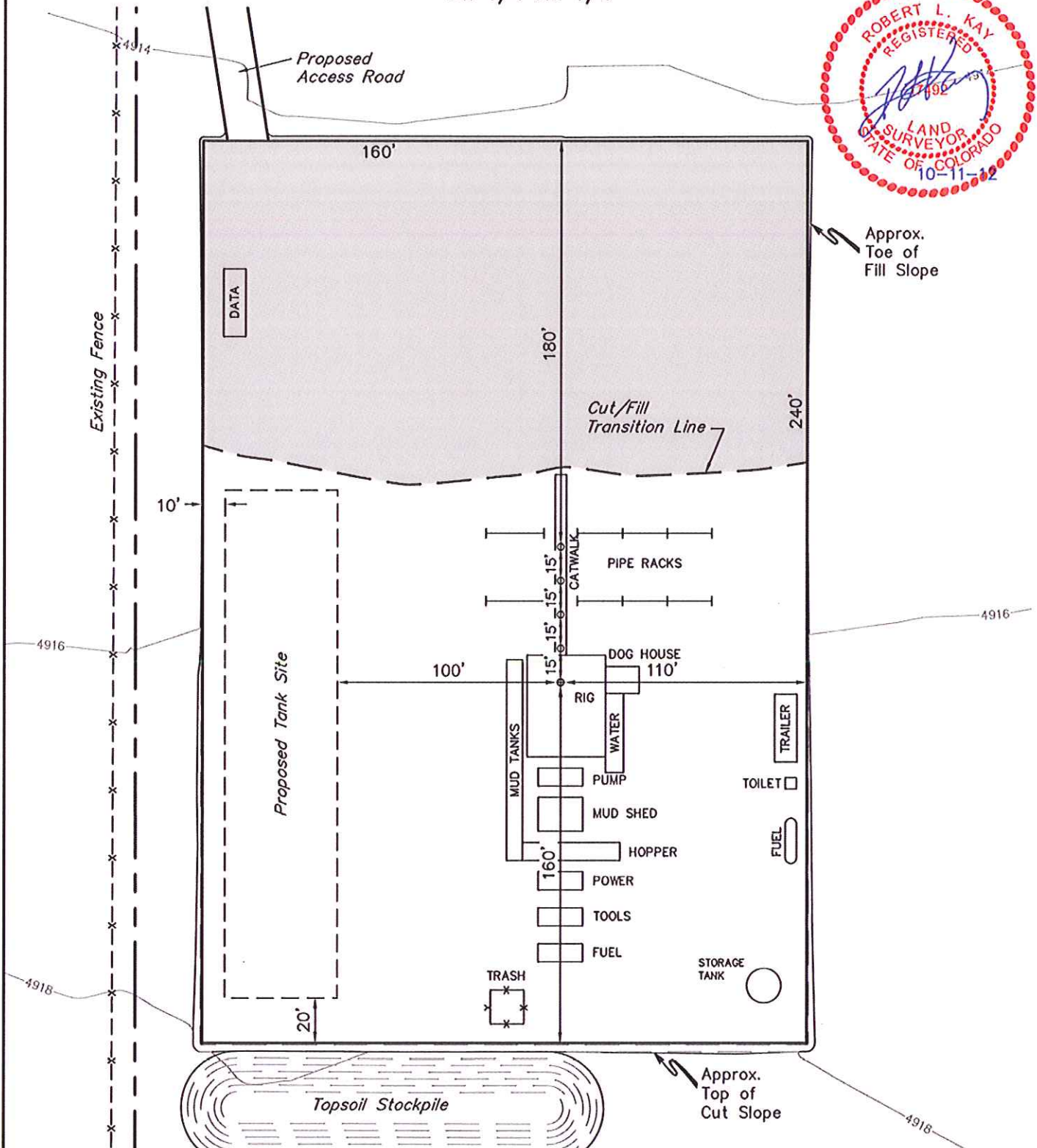
#17-8D & #17-41D

SECTION 17, T2N, R65W, 6th P.M.

SW 1/4 NE 1/4



Approx.
Toe of
Fill Slope



Approx.
Top of
Cut Slope

UINTAH ENGINEERING & LAND SURVEYING
85 So. 200 East • Vernal, Utah 84078 • (435) 789-1017