

GREAT WESTERN OIL & GAS COMPANY
CAMPBELL JF #17-6, #17-13, #17-9, #17-8 & #17-41
 LOCATED IN WELD COUNTY, COLORADO
 SECTION 17, T2N, R65W, 6th P.M.

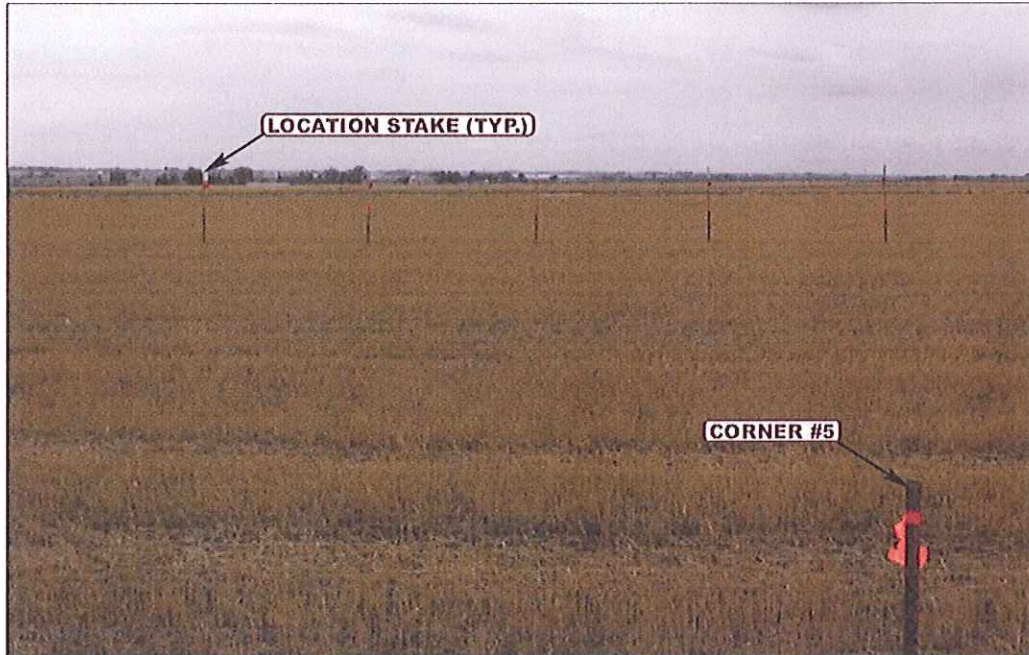


PHOTO: VIEW FROM CORNER #5 TO LOCATION STAKES

CAMERA ANGLE: SOUTHERLY



PHOTO: VIEW FROM BEGINNING OF PROPOSED ACCESS

CAMERA ANGLE: WESTERLY



U **E** **L** **S** Uintah Engineering & Land Surveying
 85 South 200 East Vernal, Utah 84078
 (435) 789-1017 * FAX (435) 789-1813

LOCATION PHOTOS

10	01	12
MONTH	DAY	YEAR

PHOTO

P1

TAKEN BY: J.H.

DRAWN BY: M.M.

REVISED: 00-00-00

GREAT WESTERN OIL & GAS COMPANY
CAMPBELL JF #17-6, #17-13, #17-9, #17-8 & #17-41
 LOCATED IN WELD COUNTY, COLORADO
 SECTION 17, T2N, R65W, 6th P.M.



PHOTO: VIEW OF LOCATION STAKES

CAMERA ANGLE: NORTHERLY

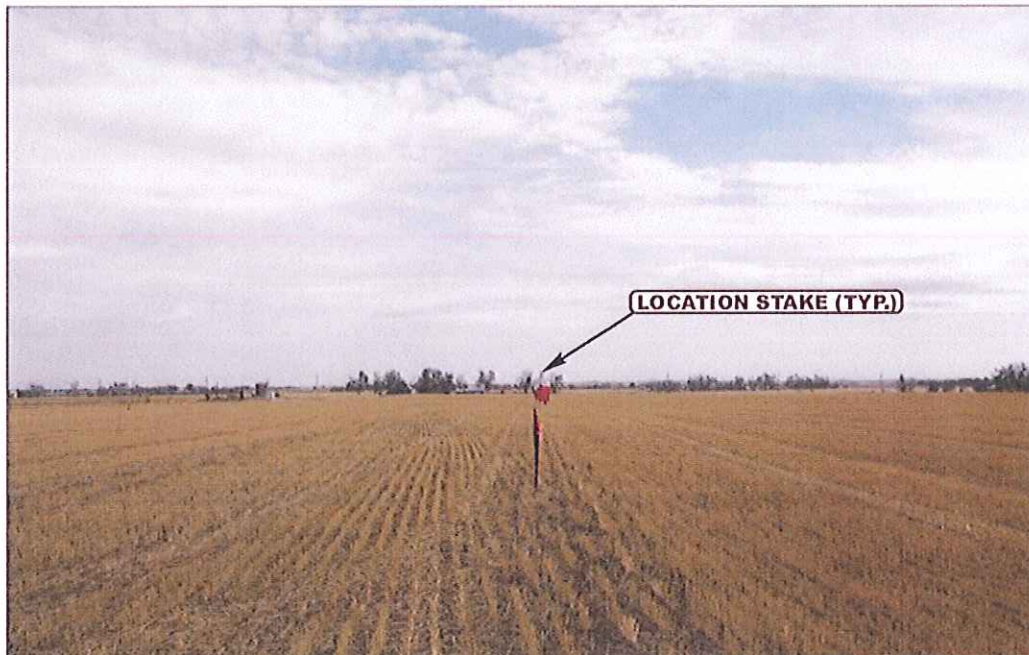


PHOTO: VIEW OF LOCATION STAKES

CAMERA ANGLE: EASTERLY



U **E** **L** **S** Uintah Engineering & Land Surveying
 85 South 200 East Vernal, Utah 84078
 (435) 789-1017 * FAX (435) 789-1813

LOCATION PHOTOS

10 | 01 | 12
 MONTH | DAY | YEAR

PHOTO

P2

TAKEN BY: J.H.

DRAWN BY: M.M.

REVISED: 00-00-00

GREAT WESTERN OIL & GAS COMPANY
CAMPBELL JF #17-6, #17-13, #17-9, #17-8 & #17-41
 LOCATED IN WELD COUNTY, COLORADO
 SECTION 17, T2N, R65W, 6th P.M.



PHOTO: VIEW OF LOCATION STAKES

CAMERA ANGLE: SOUTHERLY



PHOTO: VIEW OF LOCATION STAKES

CAMERA ANGLE: WESTERLY



- Since 1964 -

U **E** **L** **S** Uintah Engineering & Land Surveying
 85 South 200 East Vernal, Utah 84078
 (435) 789-1017 * FAX (435) 789-1813

LOCATION PHOTOS	10	01	12	PHOTO P3
	MONTH	DAY	YEAR	
TAKEN BY: J.H.	DRAWN BY: M.M.	REVISED: 00-00-00		