

LEGEND:

 PROPOSED LOCATION

N

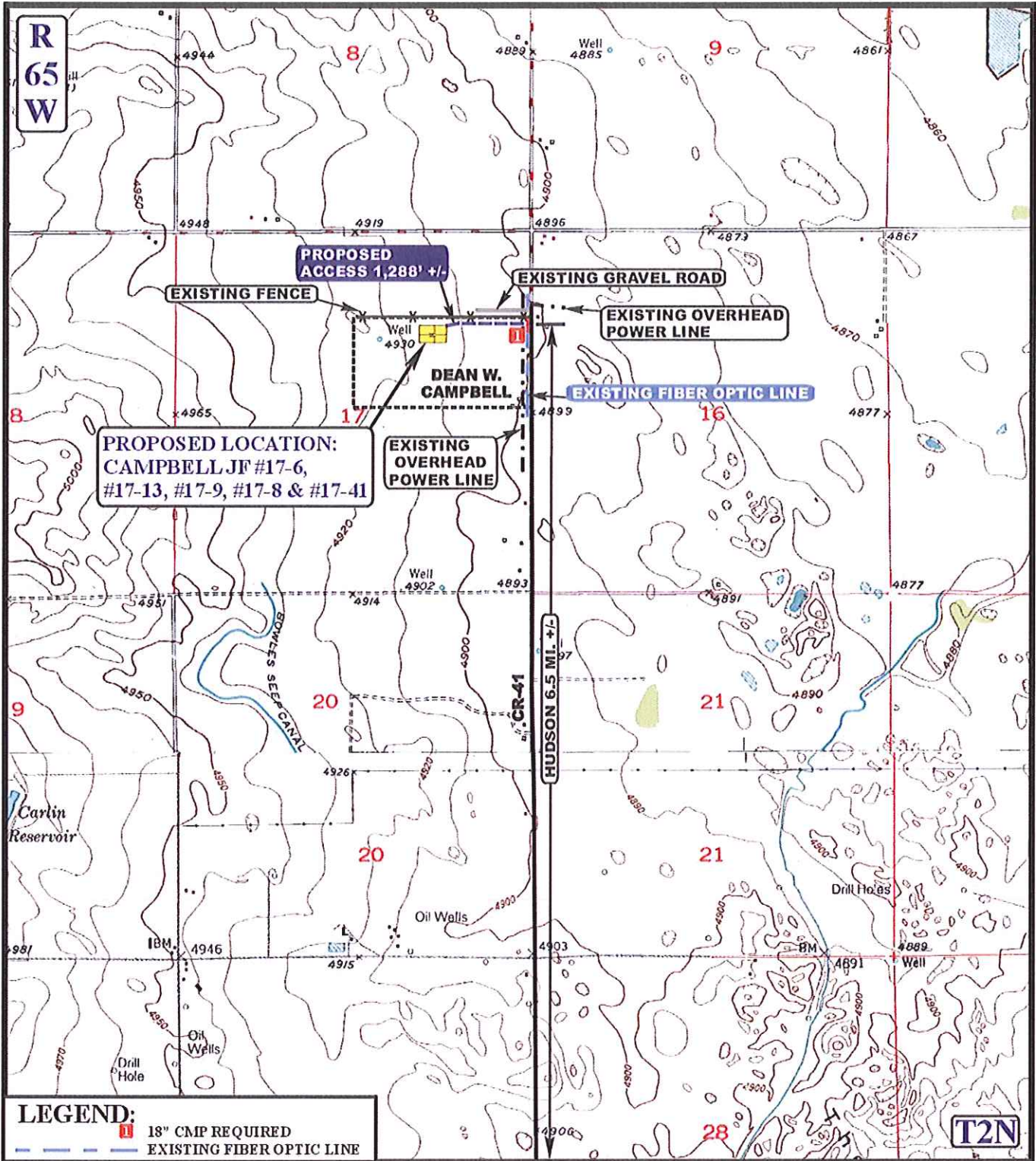


GREAT WESTERN OIL & GAS COMPANY
CAMPBELL JF #17-6, #17-13, #17-9, #17-8 & #17-41
SECTION 17, T2N, R65W, 6th P.M.
SW 1/4 NE 1/4

U&L S
Uintah Engineering & Land Surveying
 85 South 200 East Vernal, Utah 84078
 (435) 789-1017 * FAX (435) 789-1813

ACCESS ROAD
MAP
 SCALE: 1:100,000 DRAWN BY: M.M. REVISED: 00-00-00

10 01 12
 MONTH DAY YEAR
A
TOPO



LEGEND:
 18" CMP REQUIRED
 EXISTING FIBER OPTIC LINE

- EXISTING ROAD
- PROPOSED ACCESS ROAD
- EXISTING GRAVEL ROAD
- EXISTING FENCE
- EXISTING OVERHEAD POWER LINE

GREAT WESTERN OIL & GAS COMPANY
 CAMPBELL JF #17-6, #17-13, #17-9, #17-8 & #17-41
 SECTION 17, T2N, R65W, 6th P.M.
 SW 1/4 NE 1/4



Uintah Engineering & Land Surveying
 85 South 200 East Vernal, Utah 84078
 (435) 789-1017 * FAX (435) 789-1813



ACCESS ROAD
MAP

10	01	12
MONTH	DAY	YEAR

SCALE: 1" = 2000' DRAWN BY: M.M. REVISED: 00-00-00

B
 TOPO

GREAT WESTERN OIL & GAS COMPANY
CAMPBELL JF #17-6, #17-13, #17-9, #17-8 & #17-41
SECTION 17, T2N, R65W, 6th P.M.

PROCEED IN A WESTERLY, THEN NORTHWESTERLY, THEN WESTERLY DIRECTION FROM HUDSON, COLORADO ALONG HIGHWAY 52 APPROXIMATELY 2.2 MILES TO THE JUNCTION OF THIS ROAD AND CR-41 TO THE NORTH; TURN RIGHT AND PROCEED IN A NORTHERLY DIRECTION APPROXIMATELY 4.3 MILES TO THE BEGINNING OF THE PROPOSED ACCESS ROAD TO THE WEST; FOLLOW ROAD FLAGS IN A WESTERLY DIRECTION APPROXIMATELY 1288' TO THE PROPOSED LOCATION.

TOTAL DISTANCE FROM HUDSON, COLORADO TO THE PROPOSED LOCATION IS APPROXIMATELY 6.7 MILES.