

1:240

WELL **CAMP 4N-25HZ**

FIELD WATTENBERG

COUNTY	WELD	STATE	CC
--------	------	-------	----

Location

SHL: 507' FSL & 495' FWL
SEC. 25 TWP. 3N RGE. 66W
LAT: 40.190423° , LONG: -104.733154°

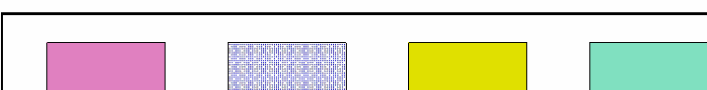
Elev.: K.B.	5068.00 ft
D.F.	5068.00 ft
G.L.	5043.00 ft

Date Processed 29-NOV-11 Processed At DENVER FRSS

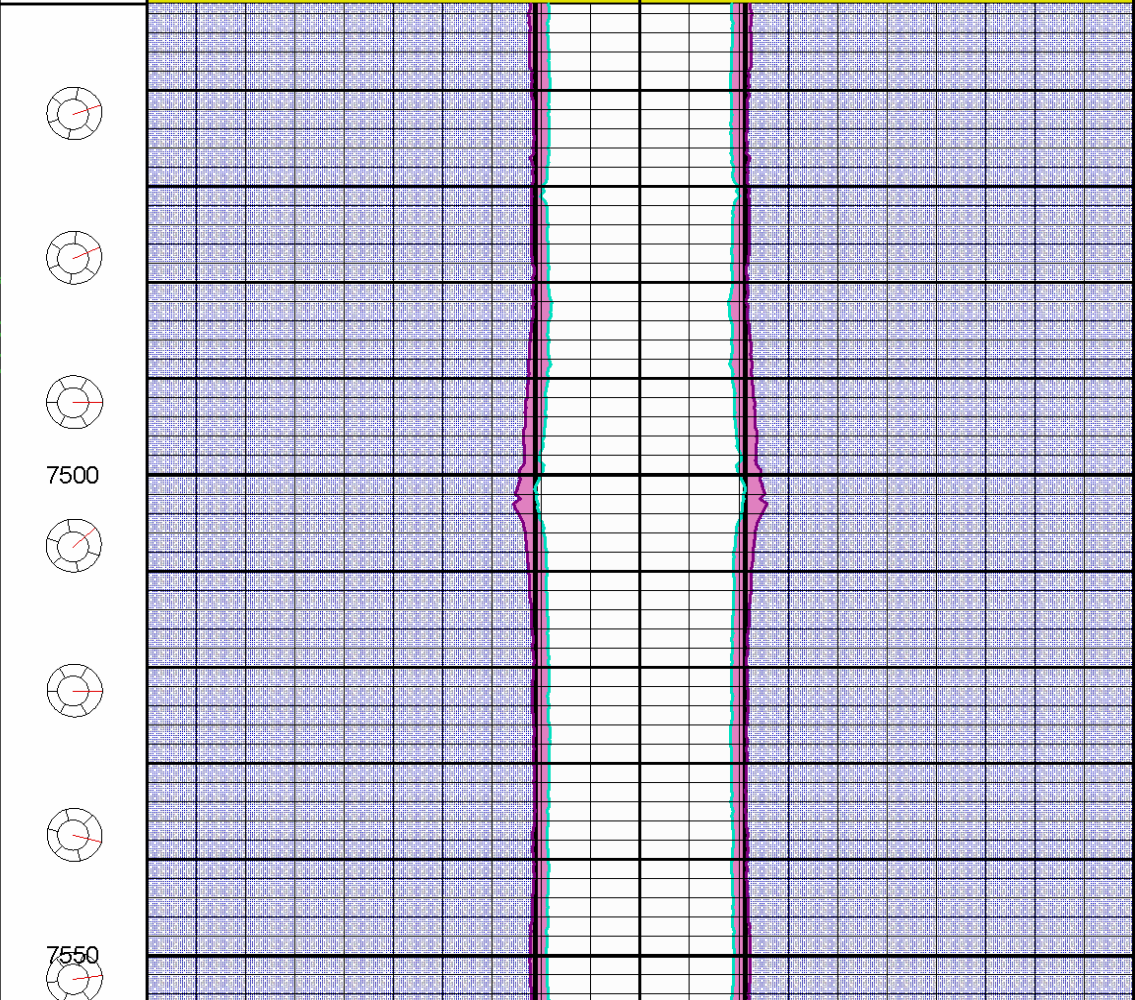
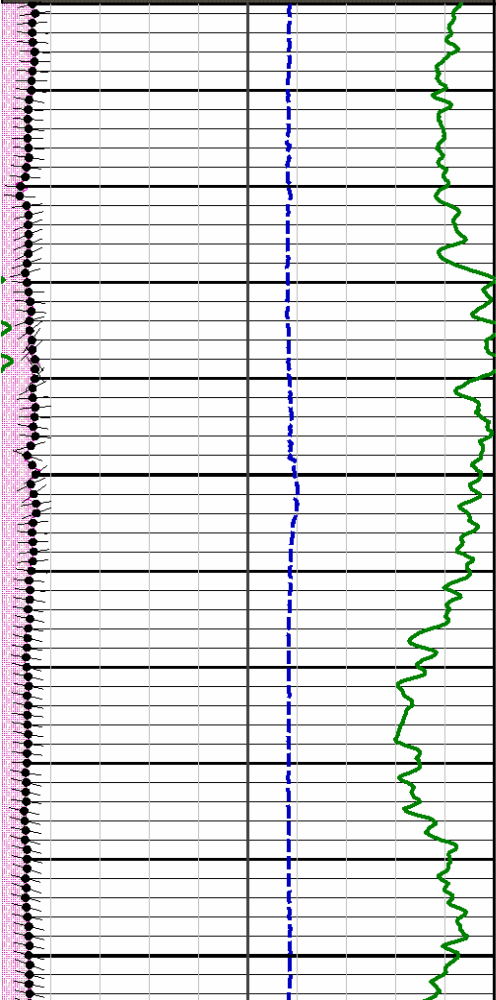
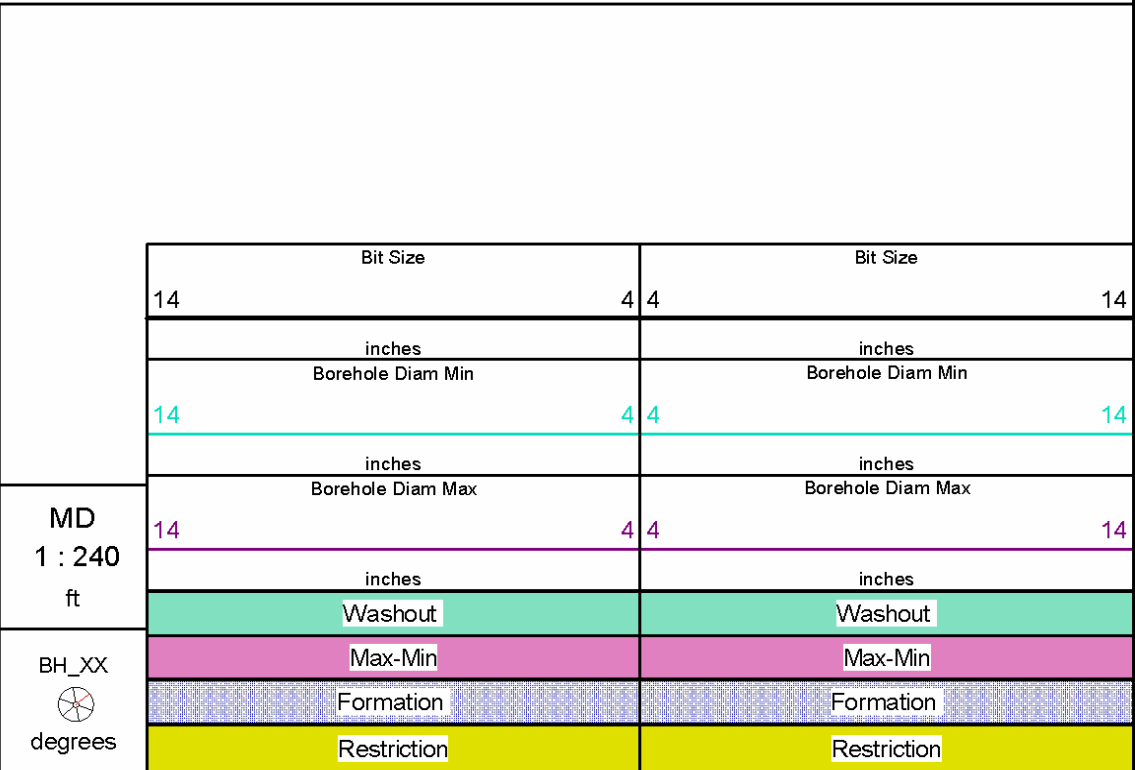
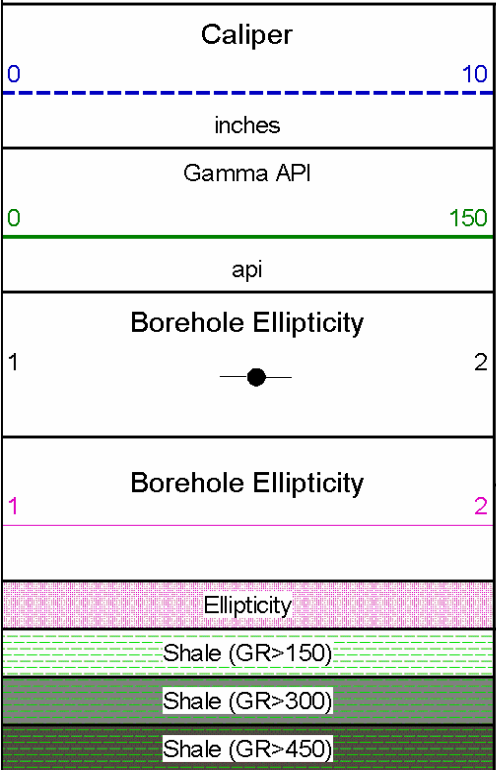
Processed At DENVER FRS

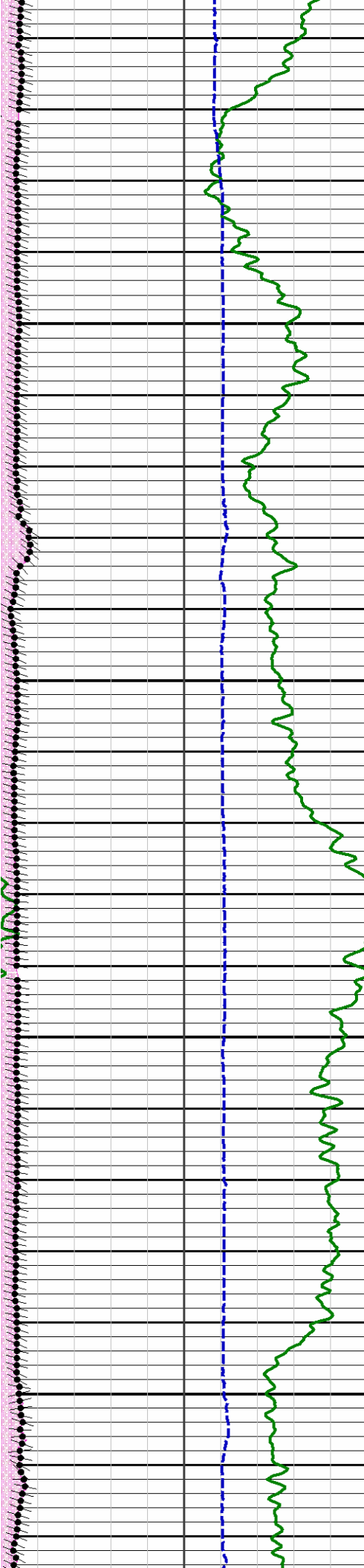
Processed At DENVER FRS

E-1.4.1.1. —

[illegible]

Note:Borehole restrictions can adversely affect the borehole breakout results.
Note: Yellow shading is used for borehole restrictions flag.



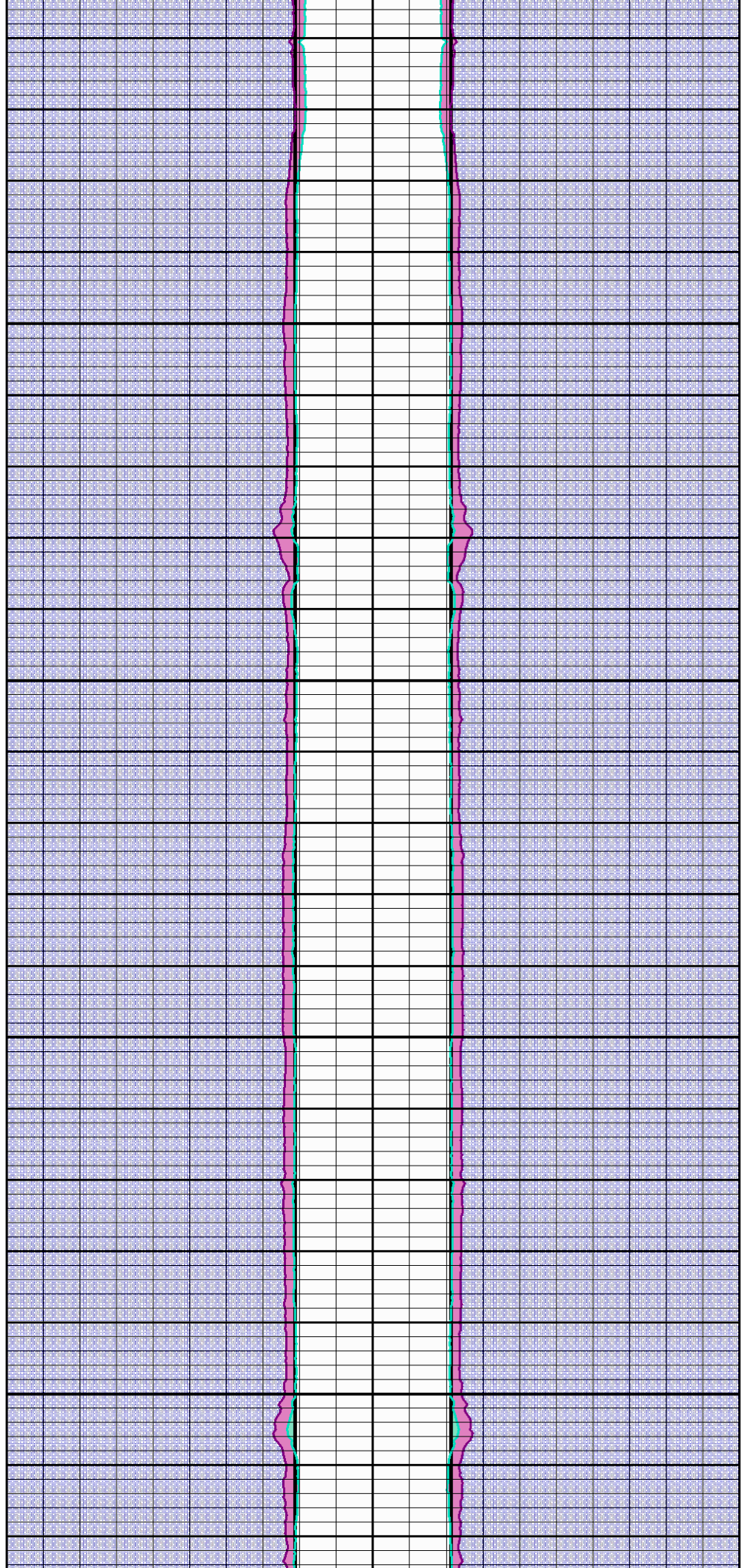


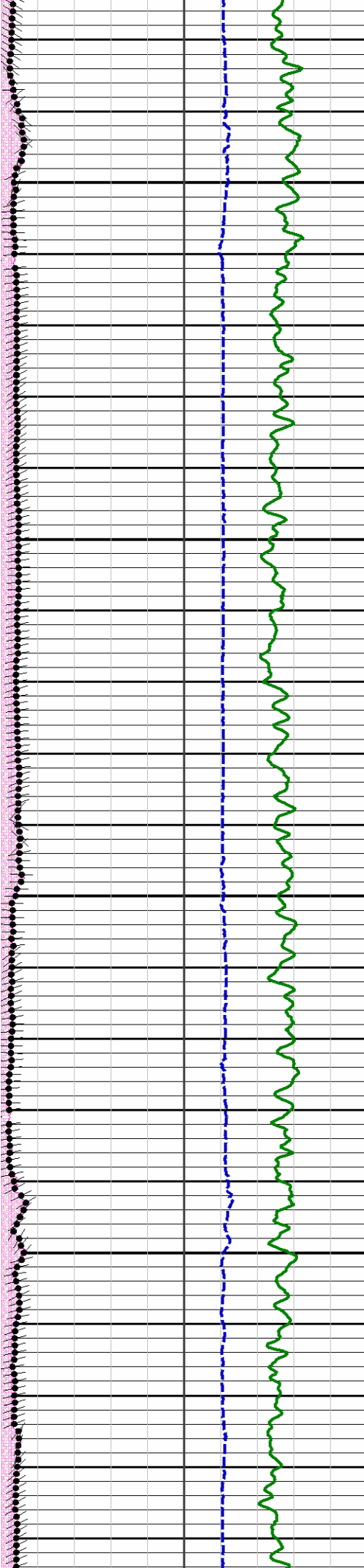
7600

7650

7700

7750





7800



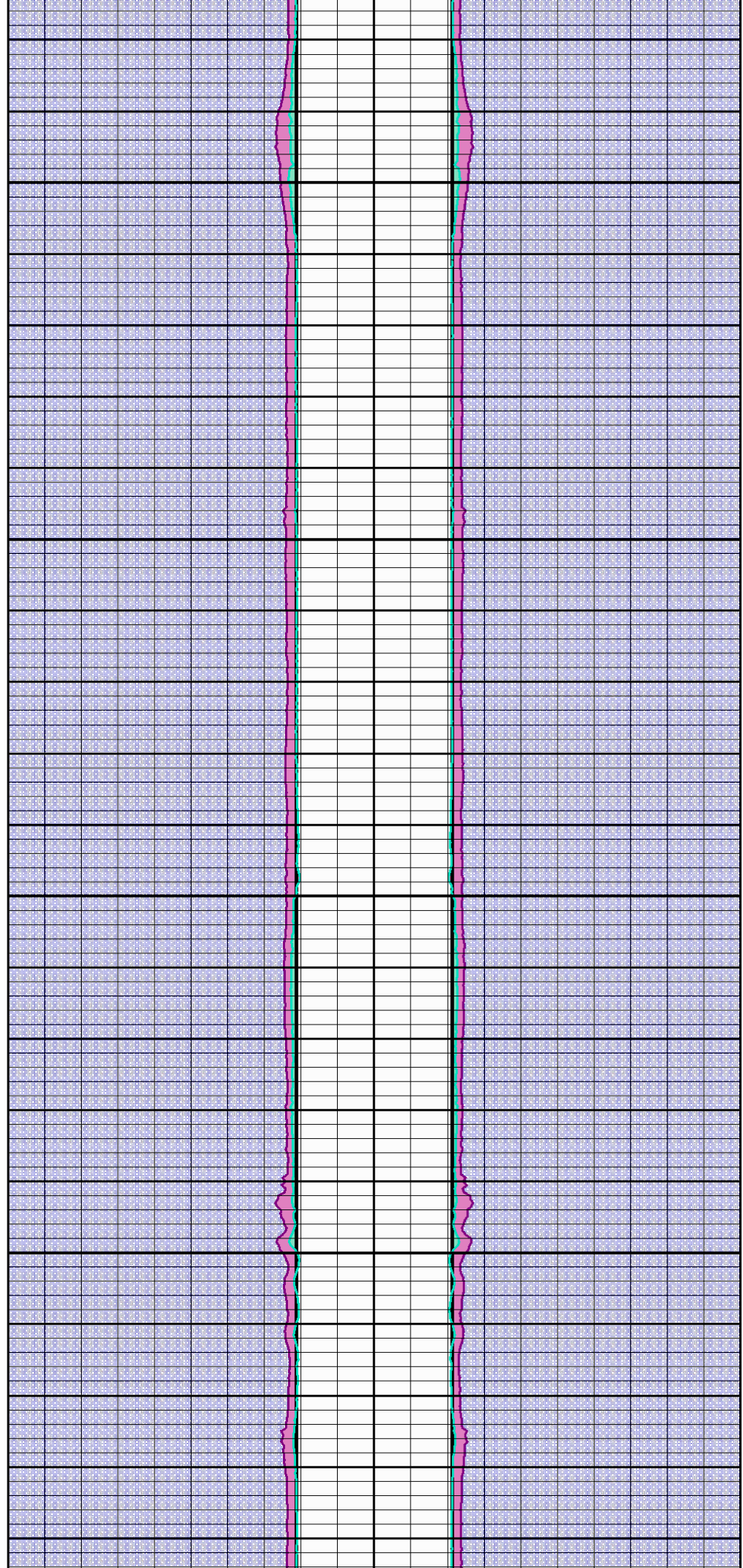
7850

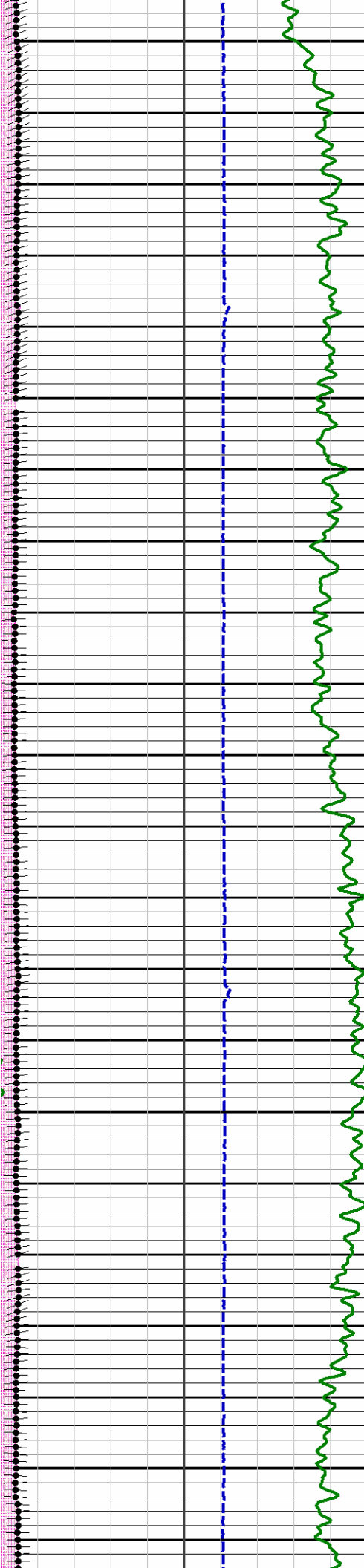


7900



7950





8000



8050



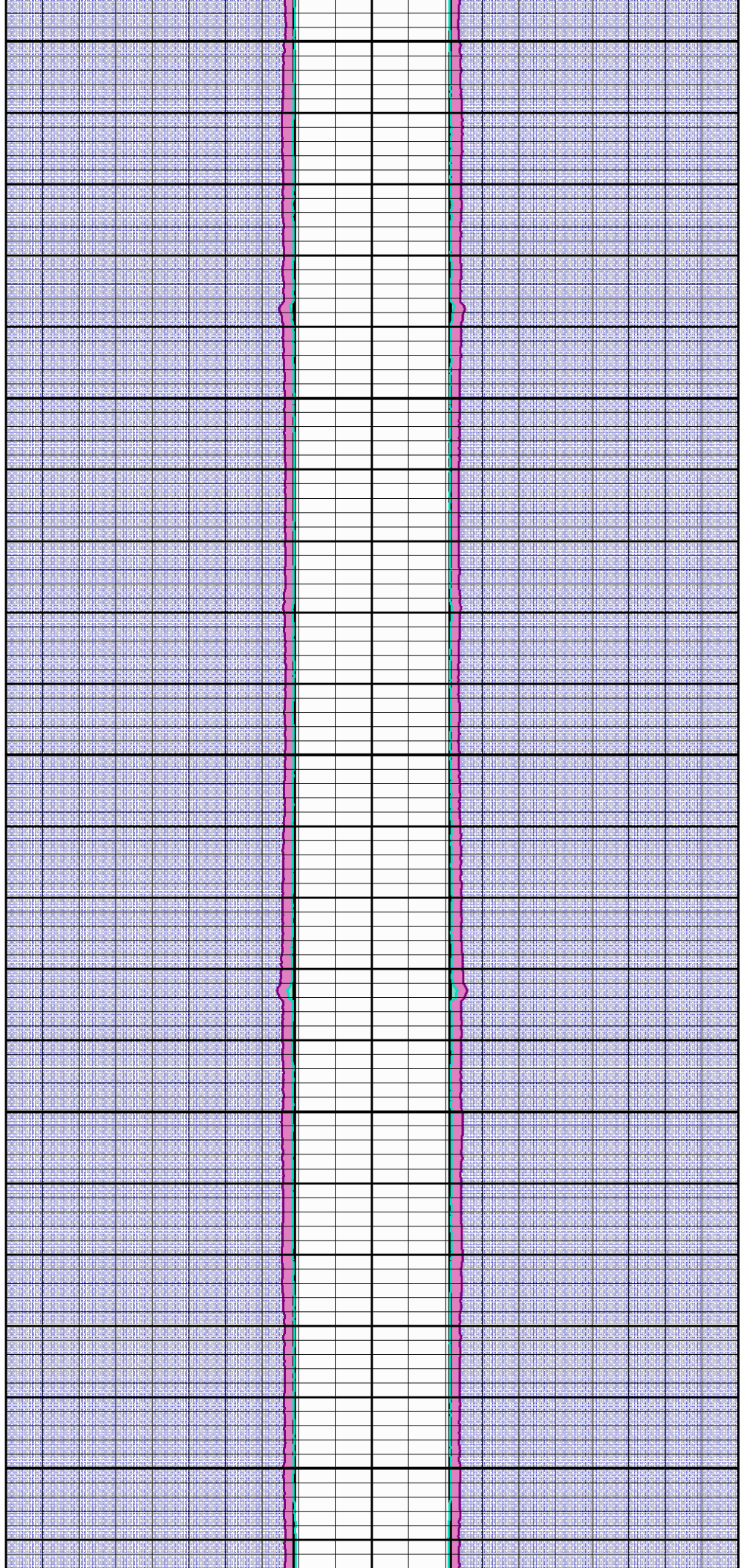
8100

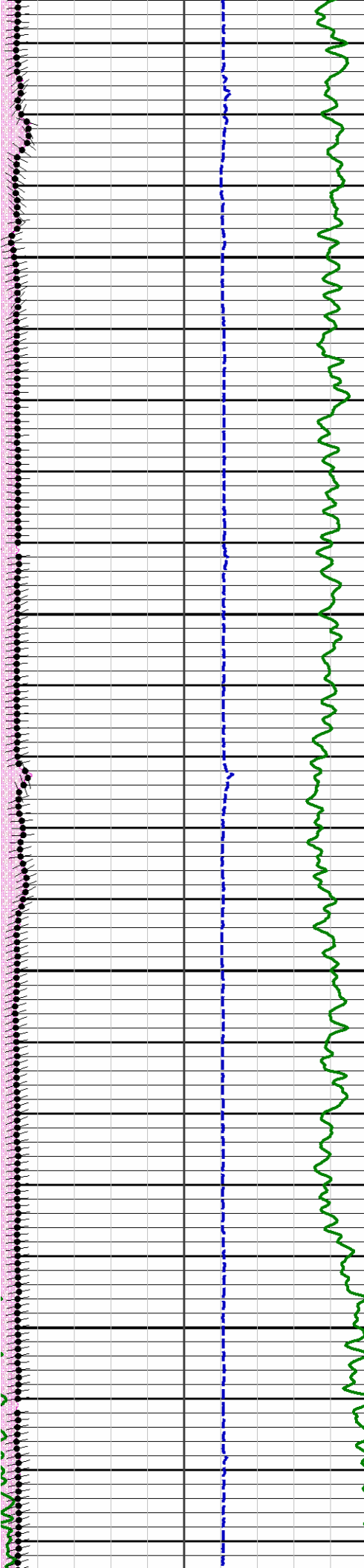


8150



8200



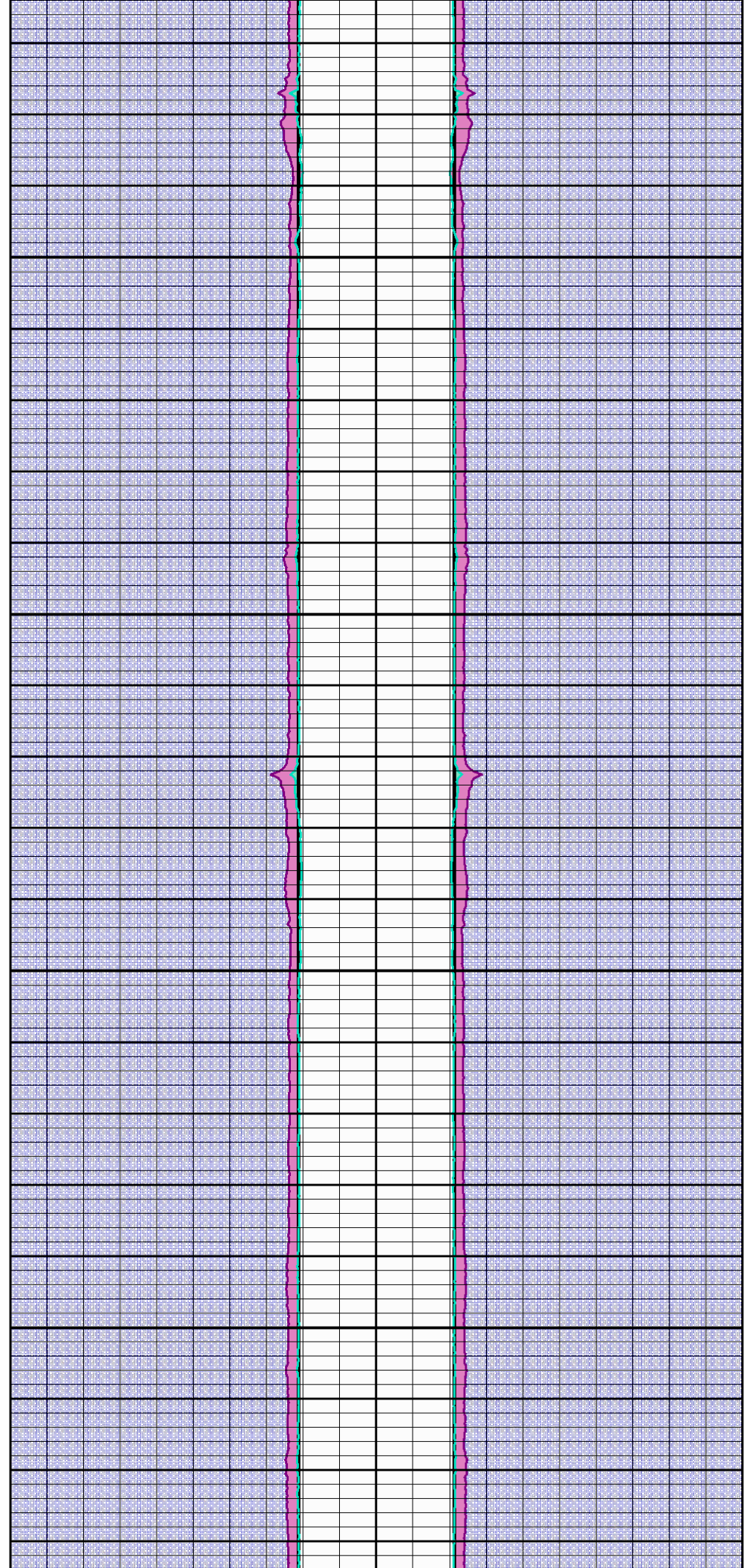


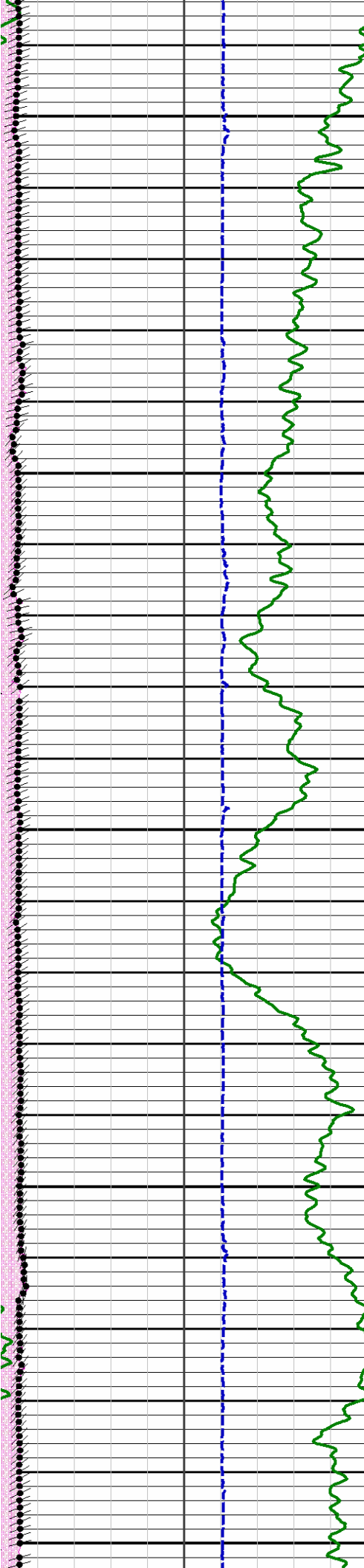
8250

8300

8350

8400





8450



8500



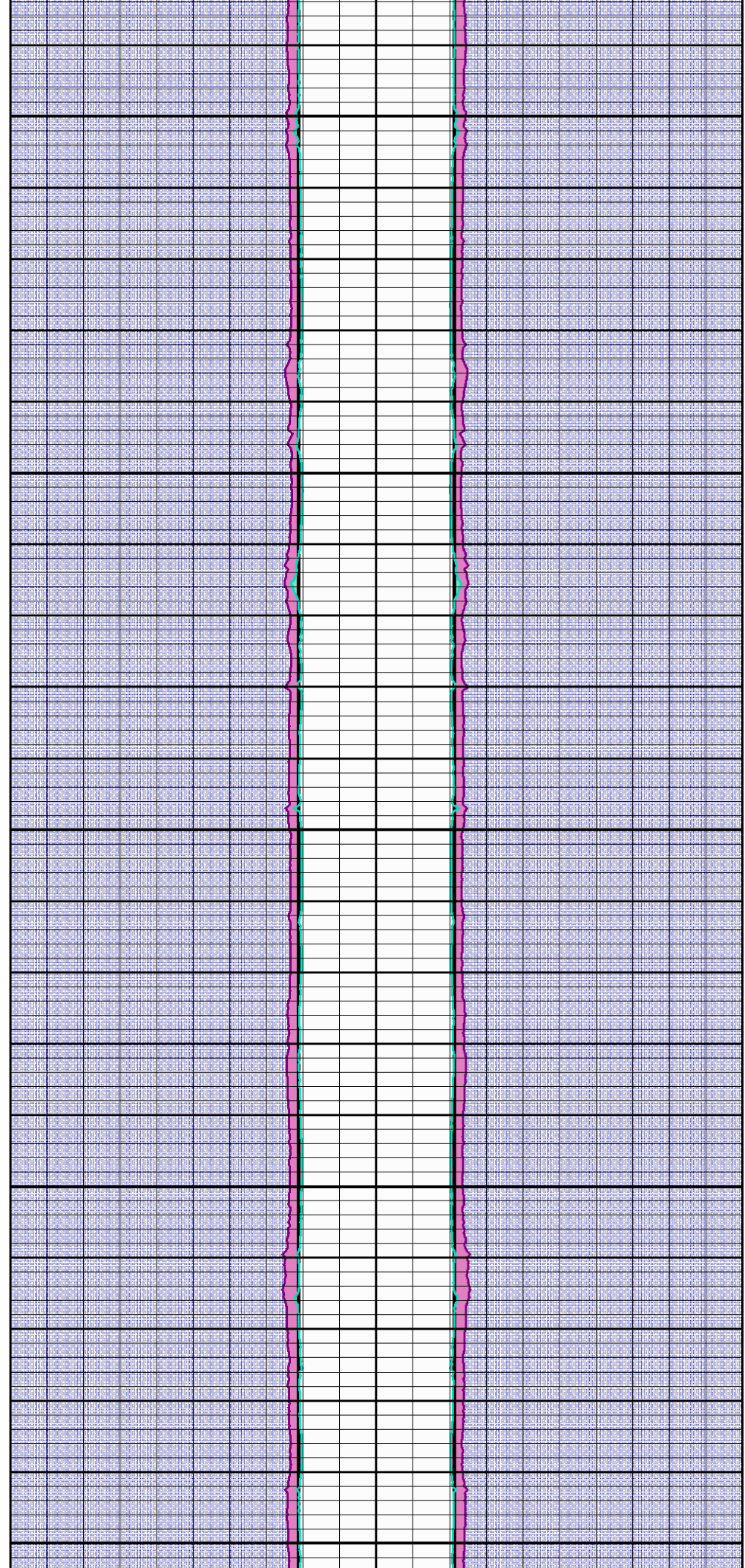
8550

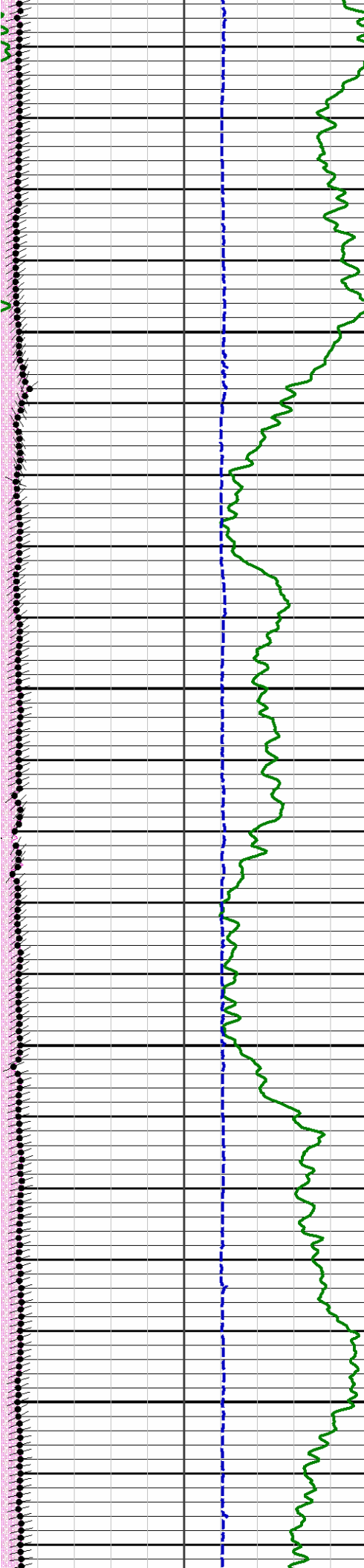


8600



8650



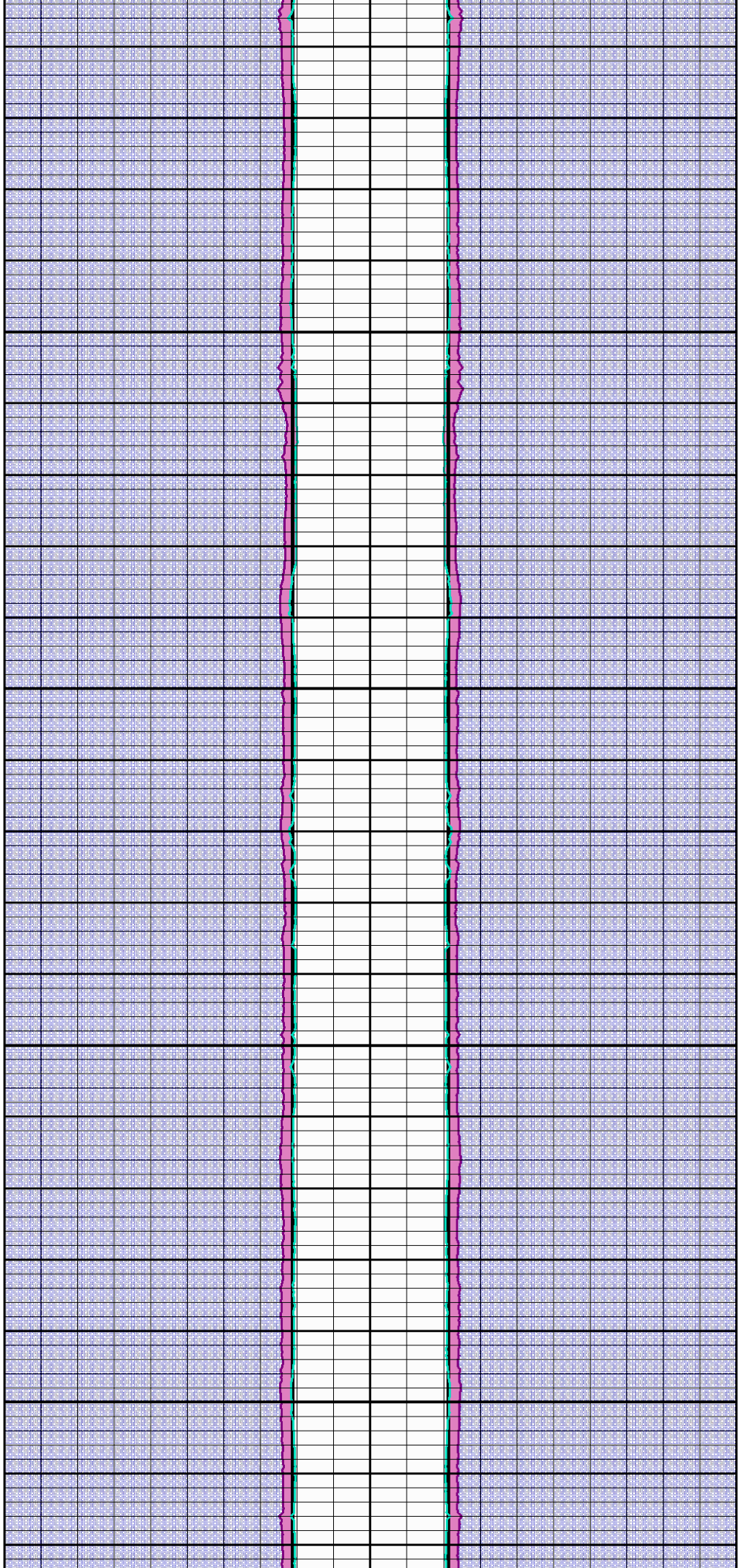


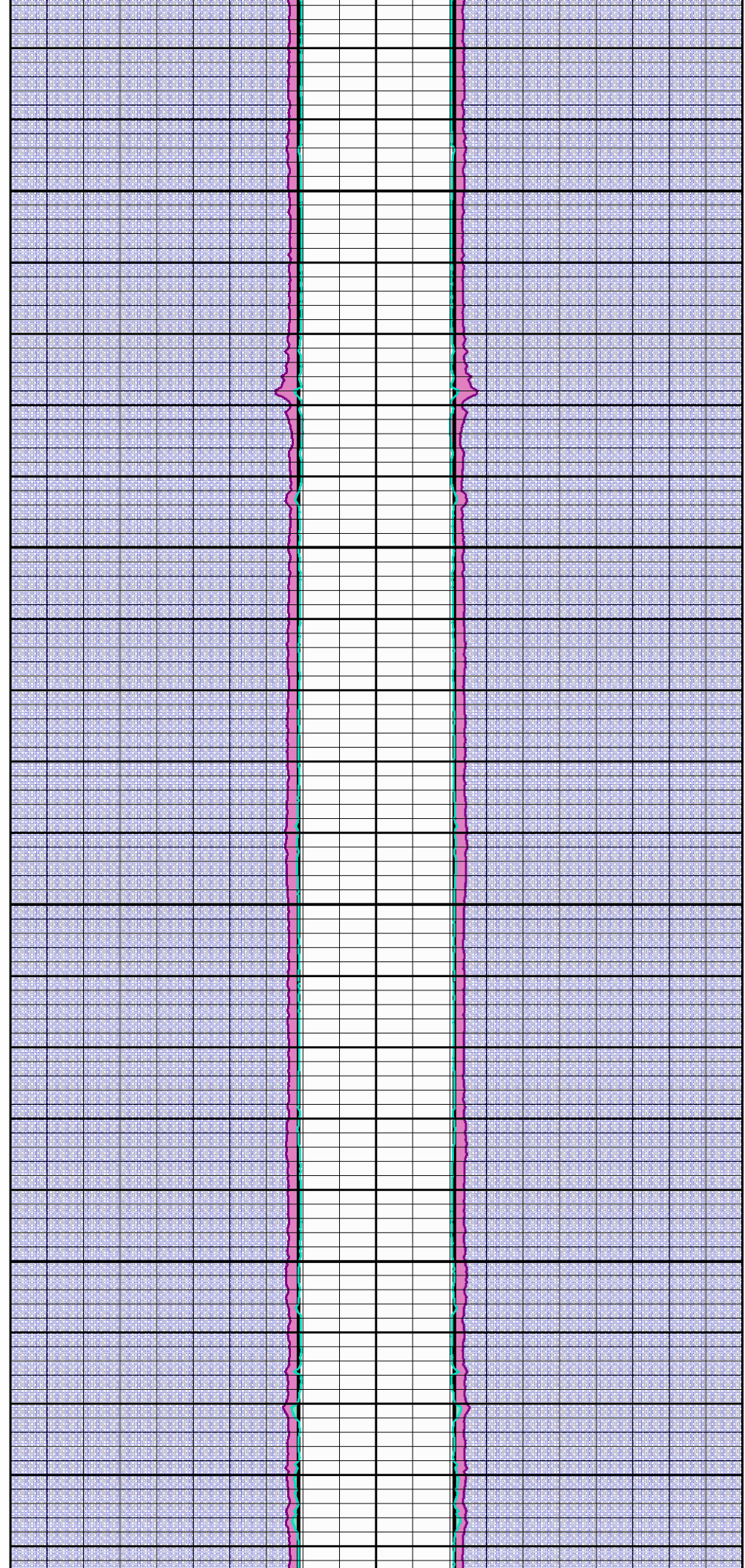
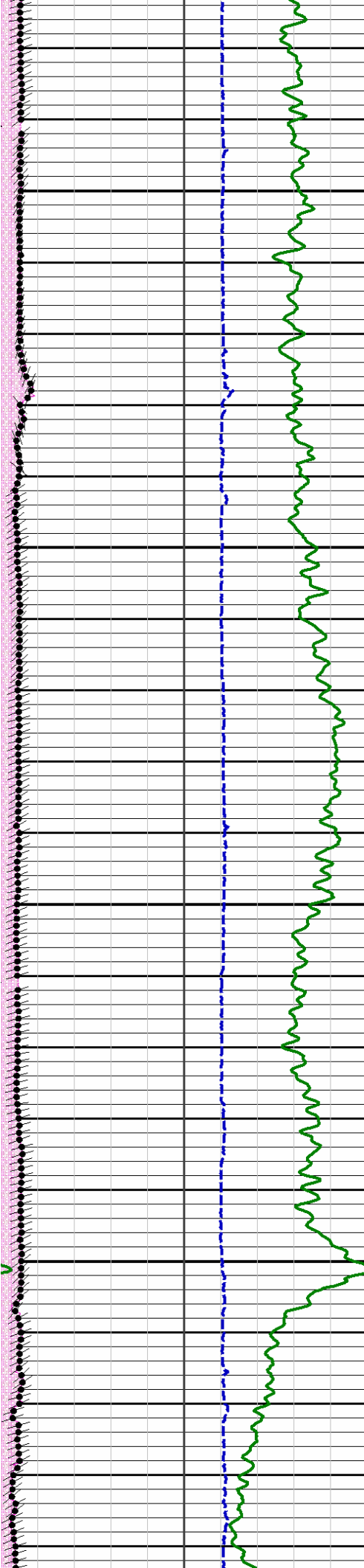
8700

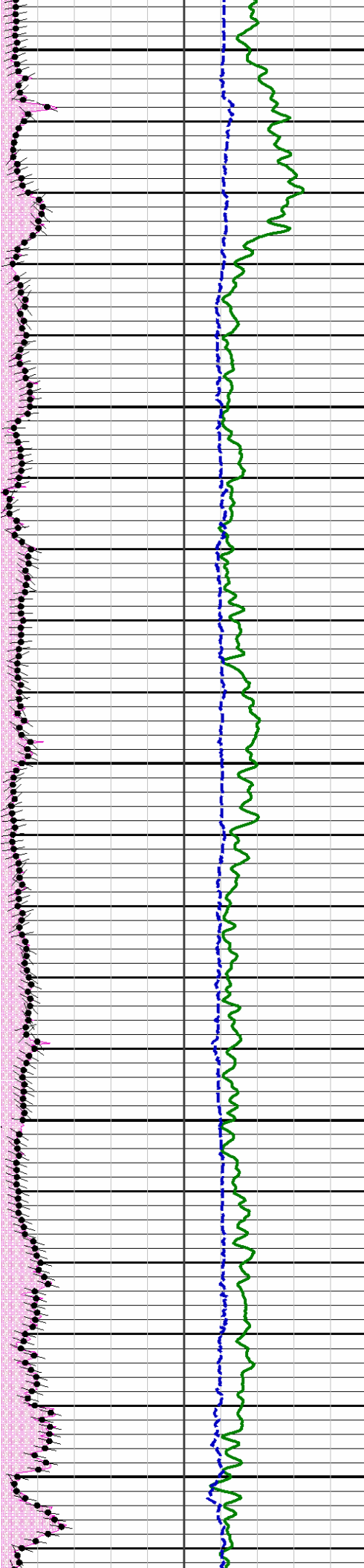
8750

8800

8850







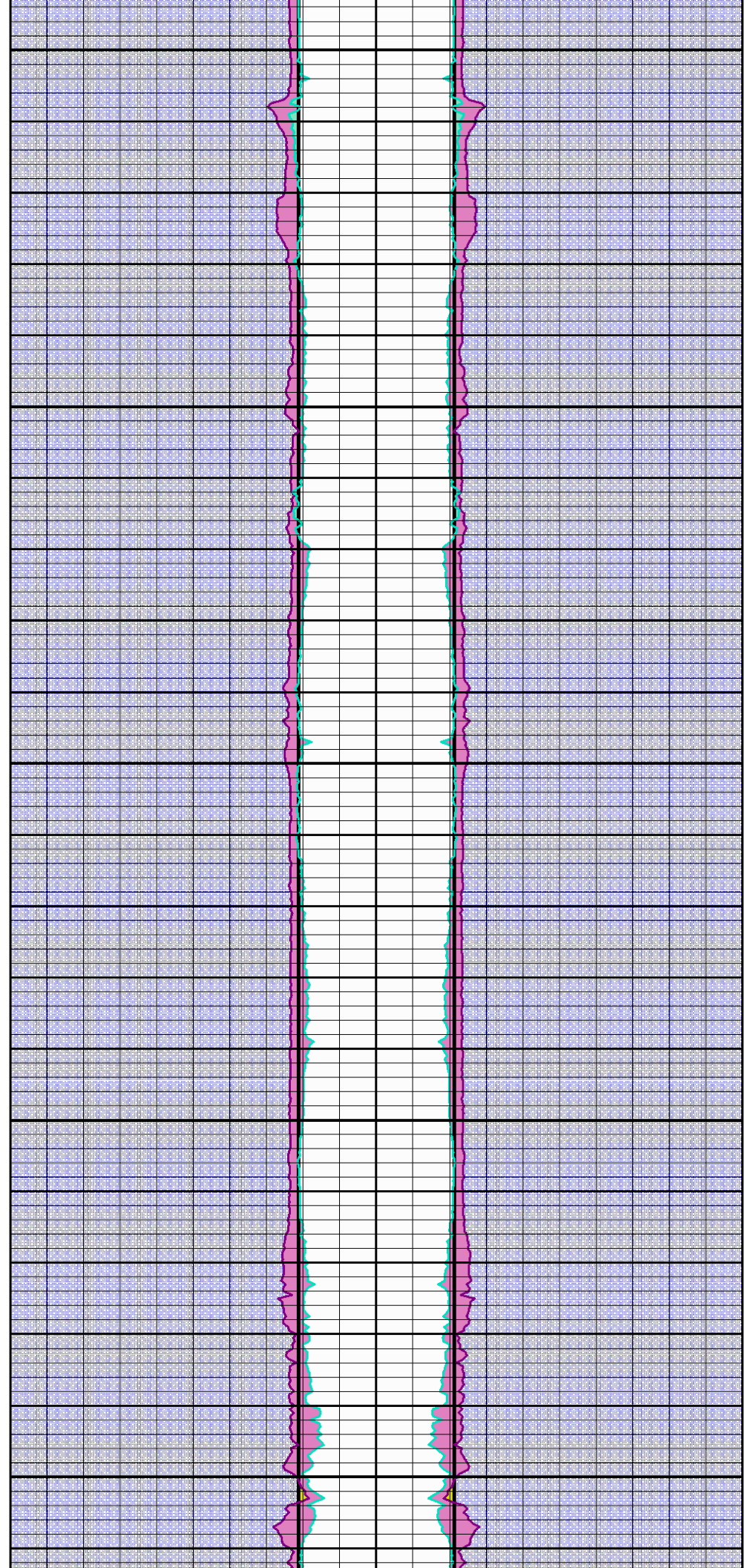
9150

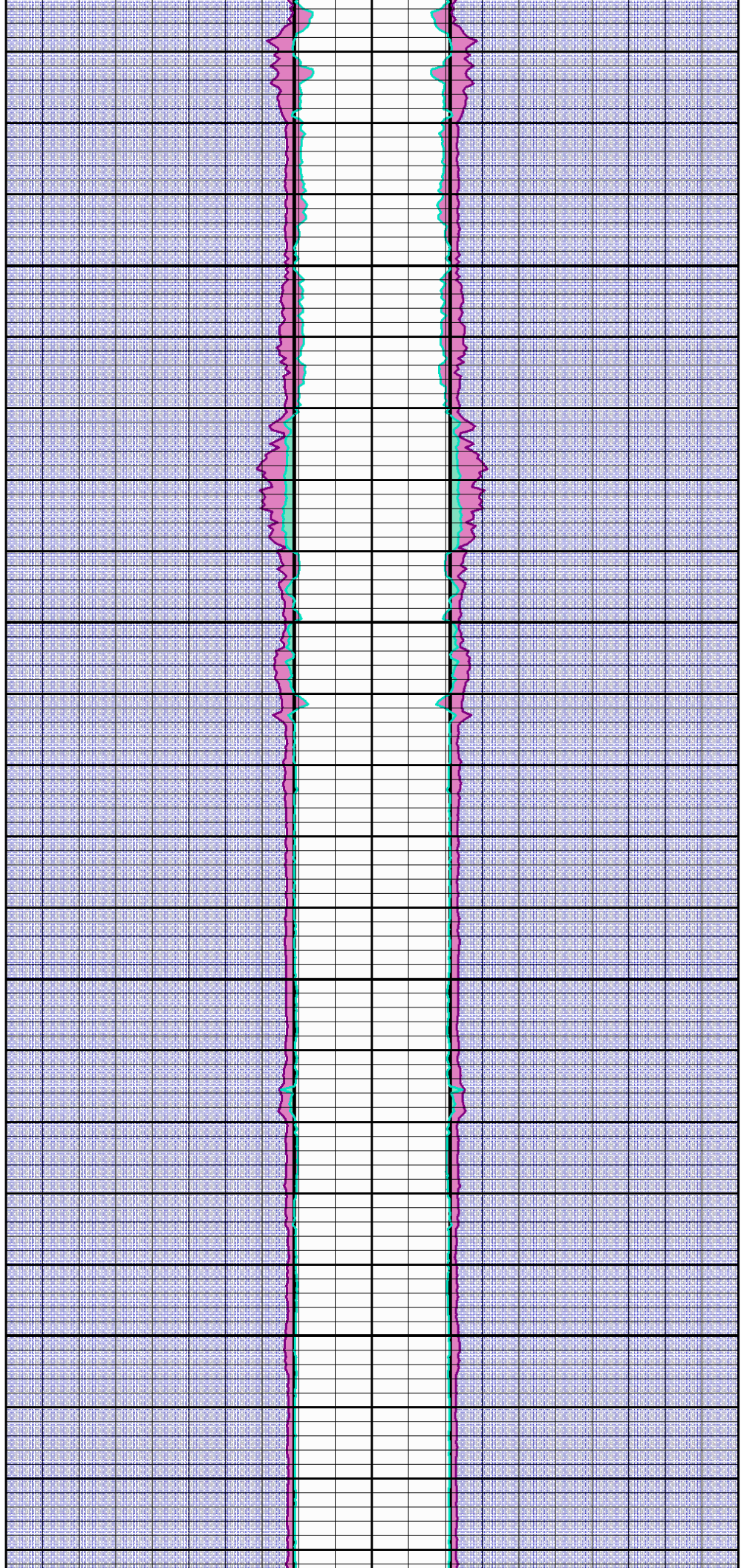
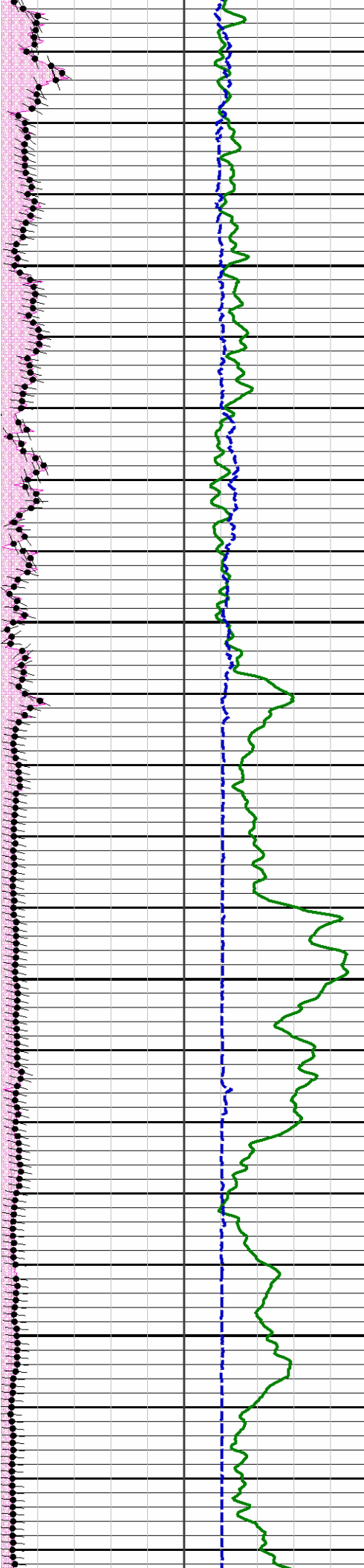


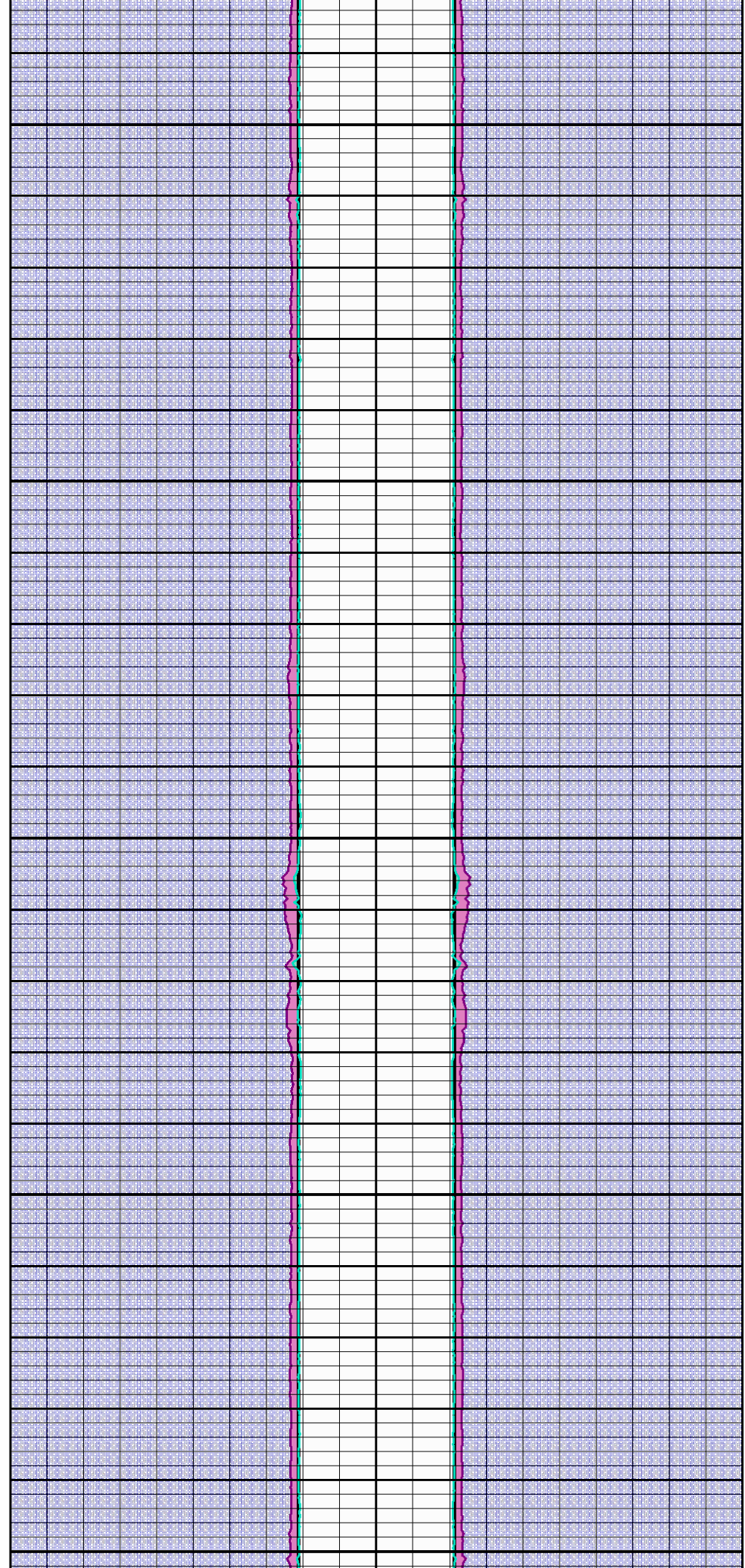
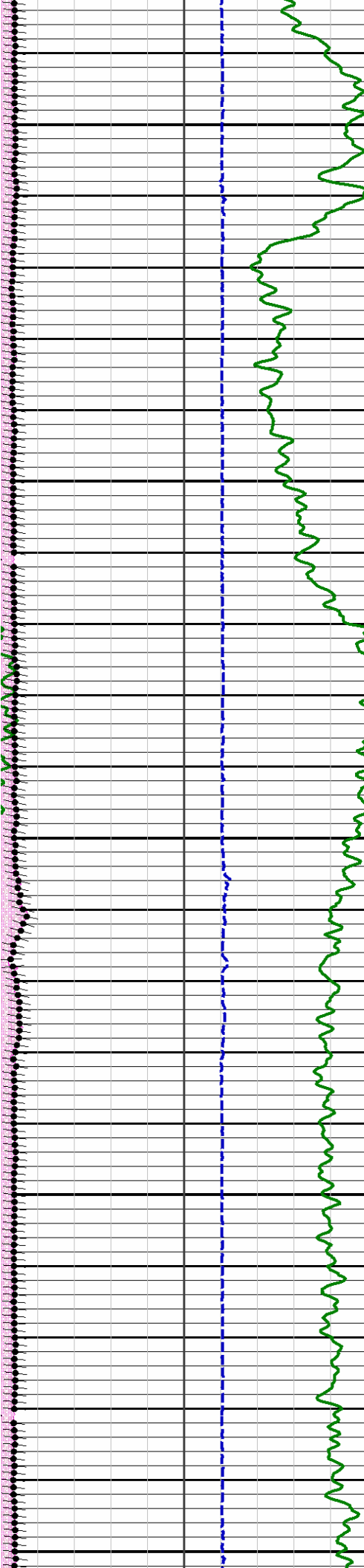
9250

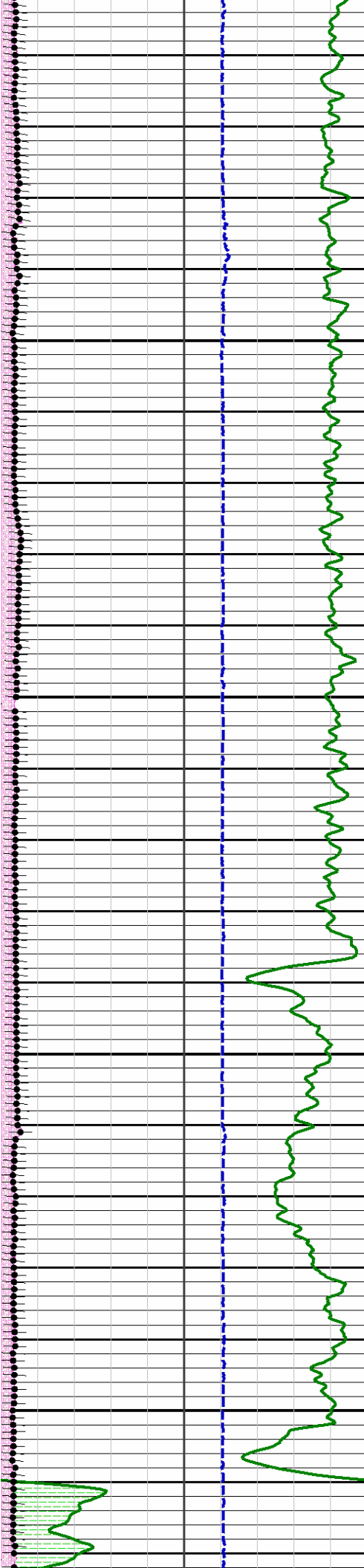


9300







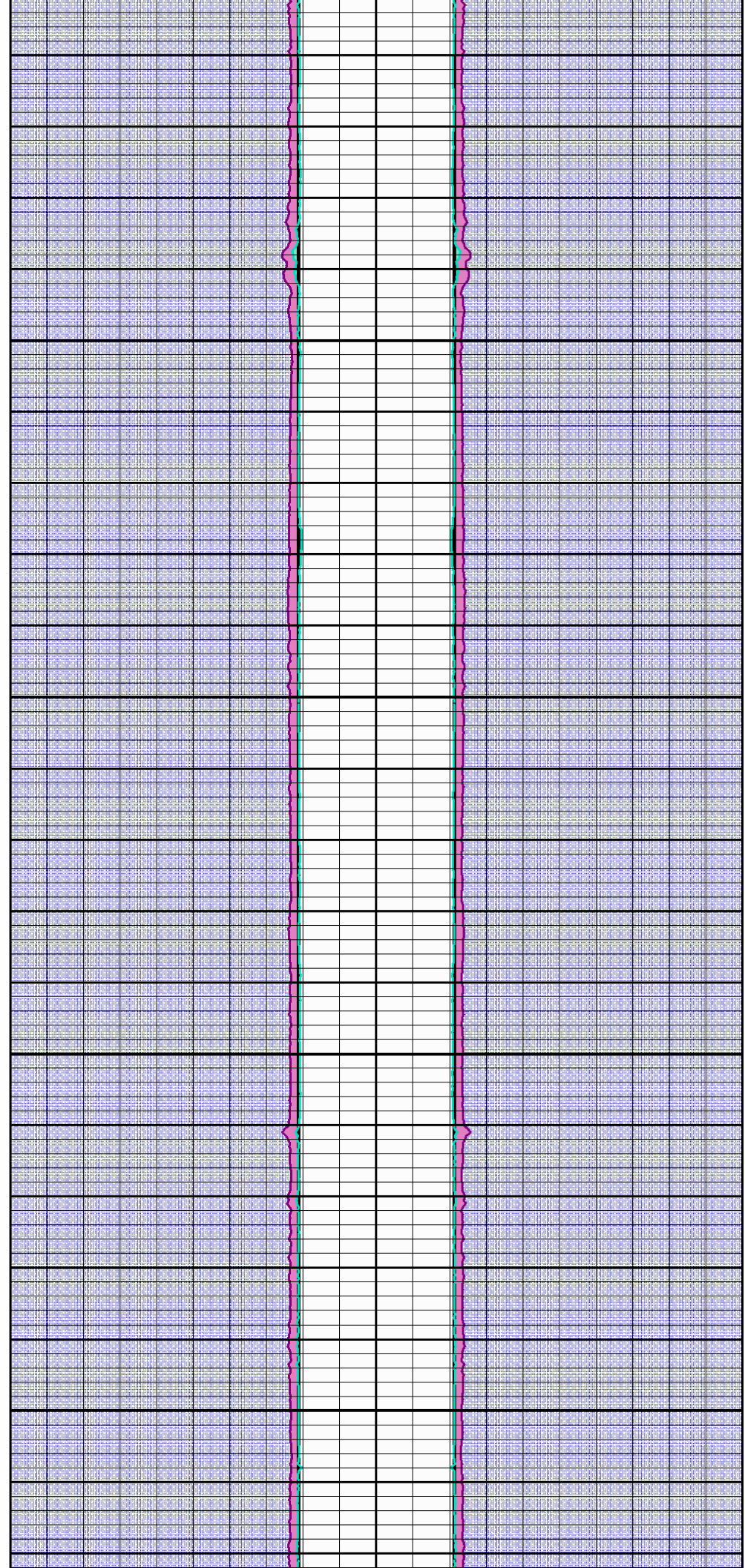


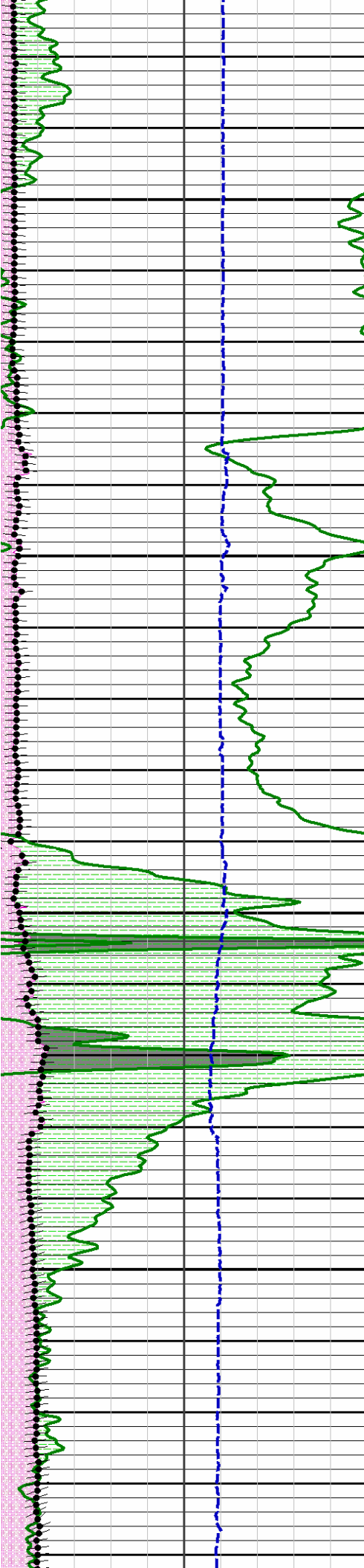
9860

9850

9900

9950



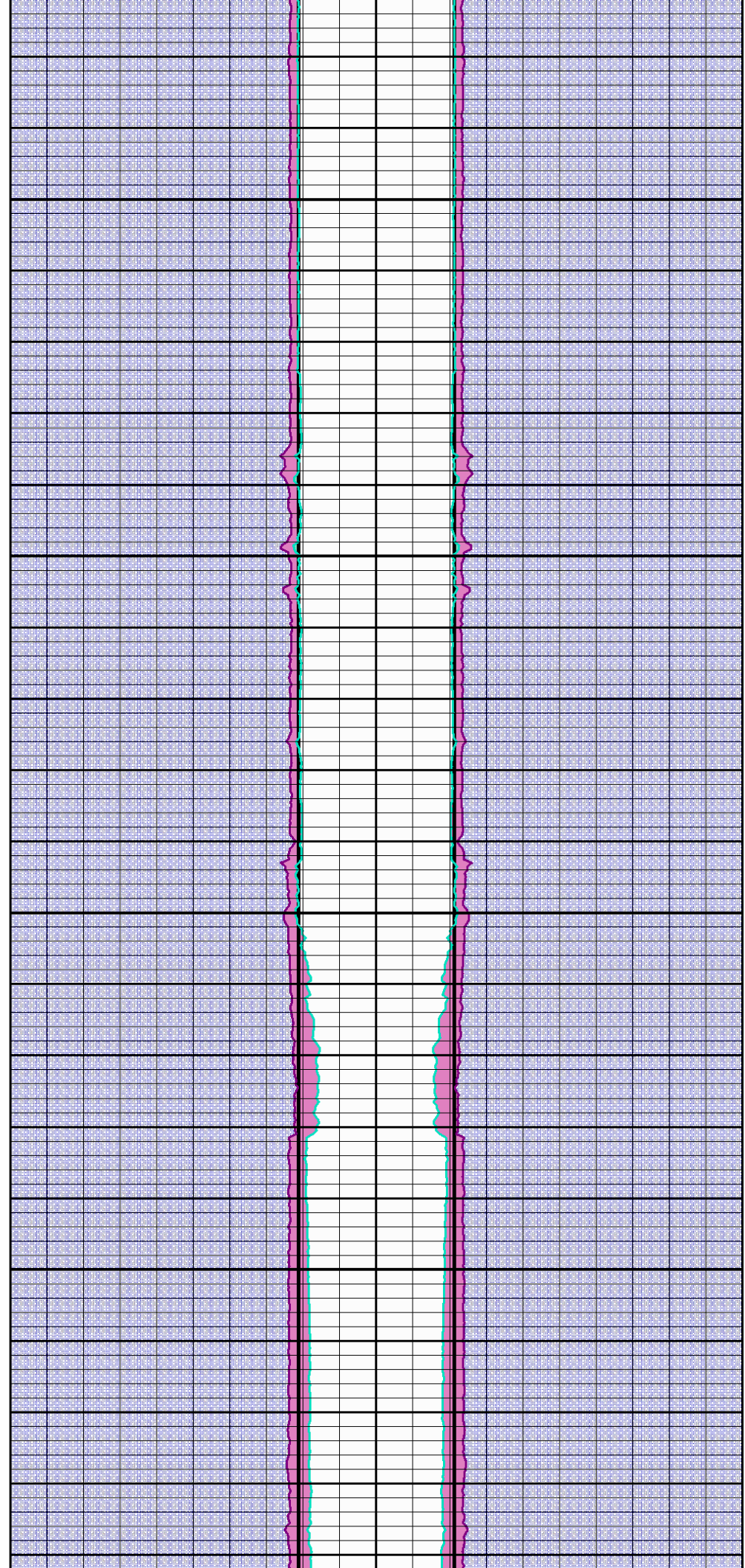


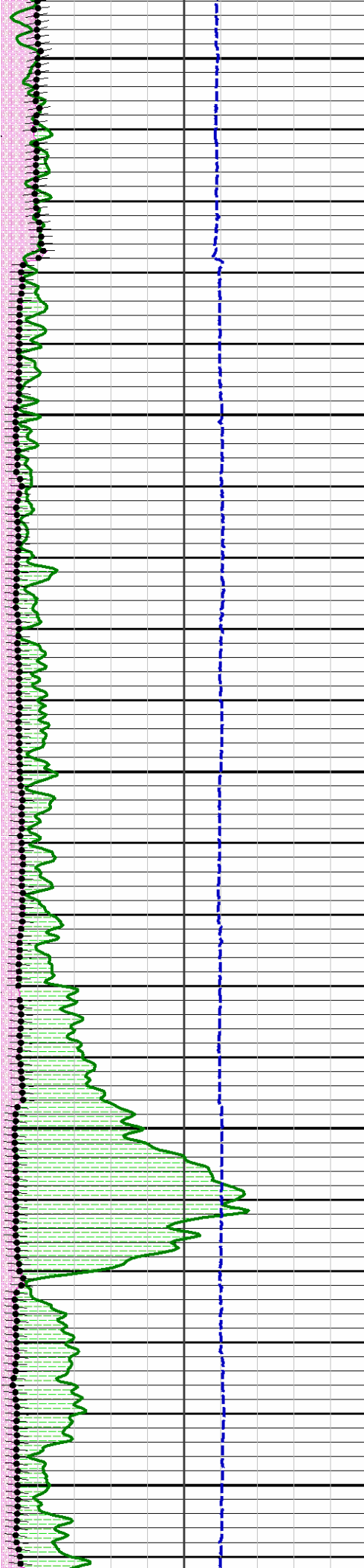
10000

10050

10100

10450





10200



10250



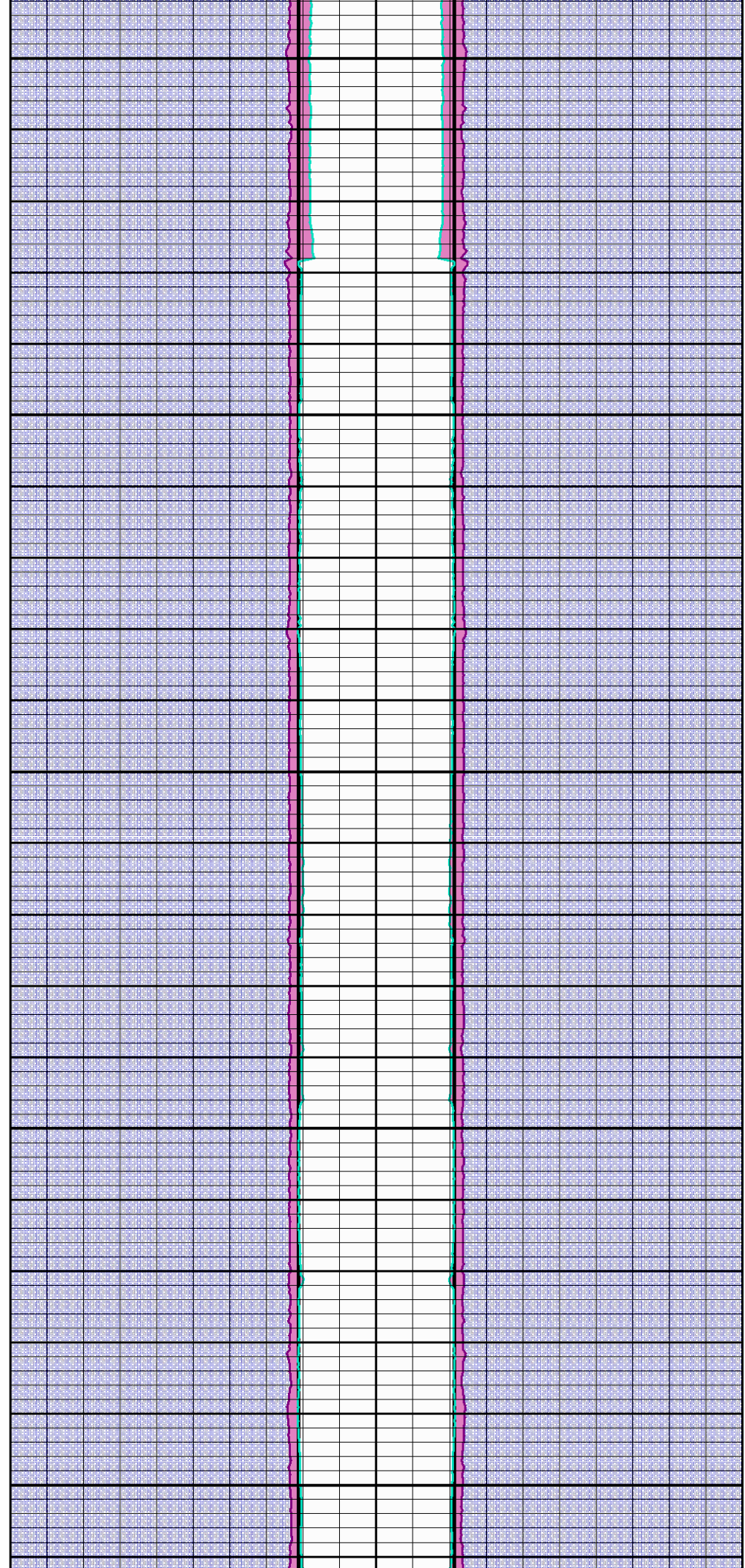
10300

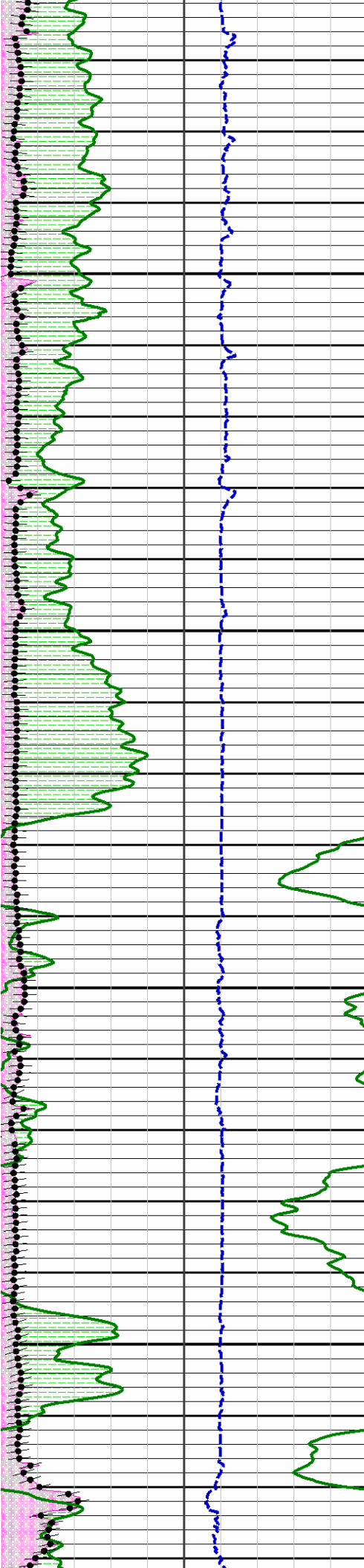


10350



10400



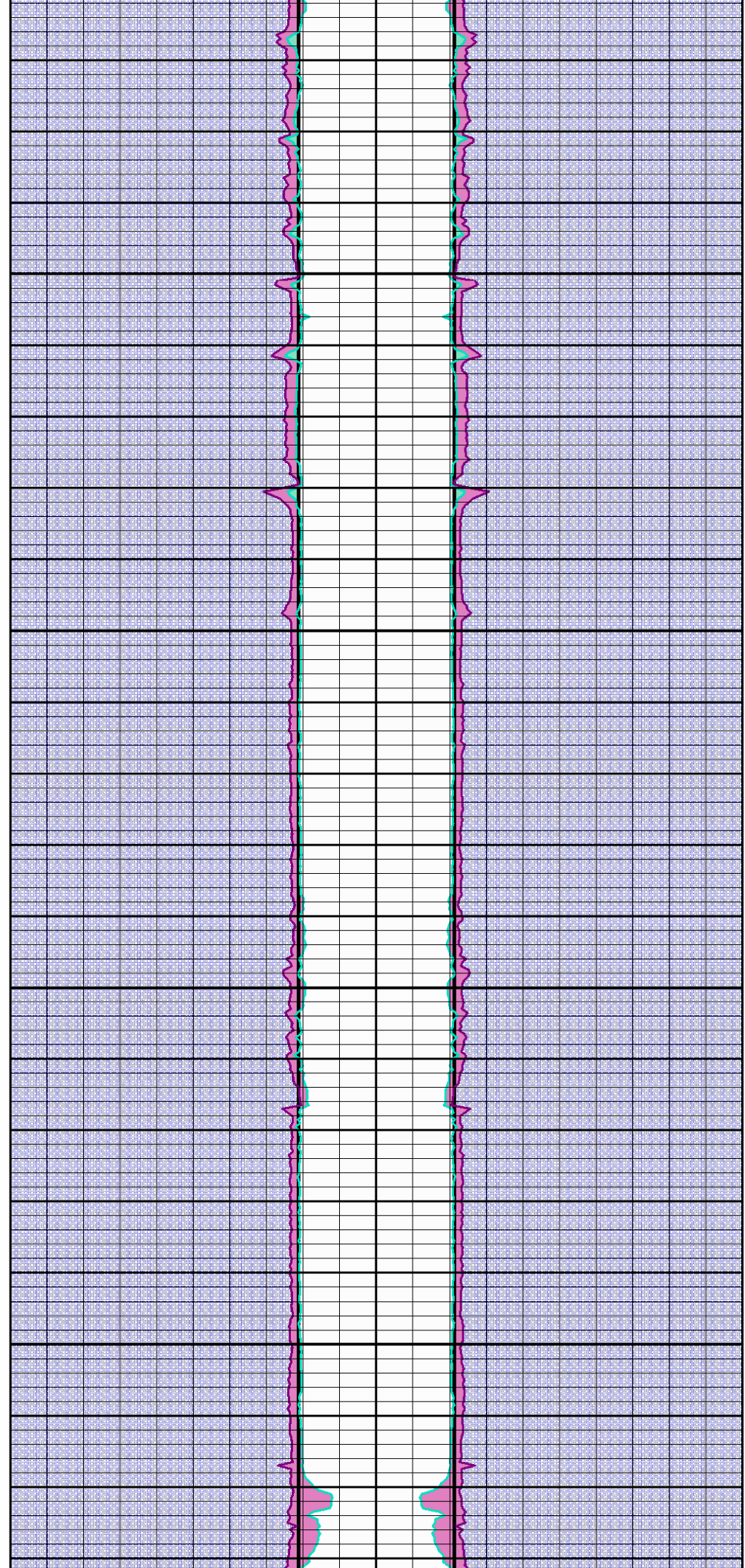


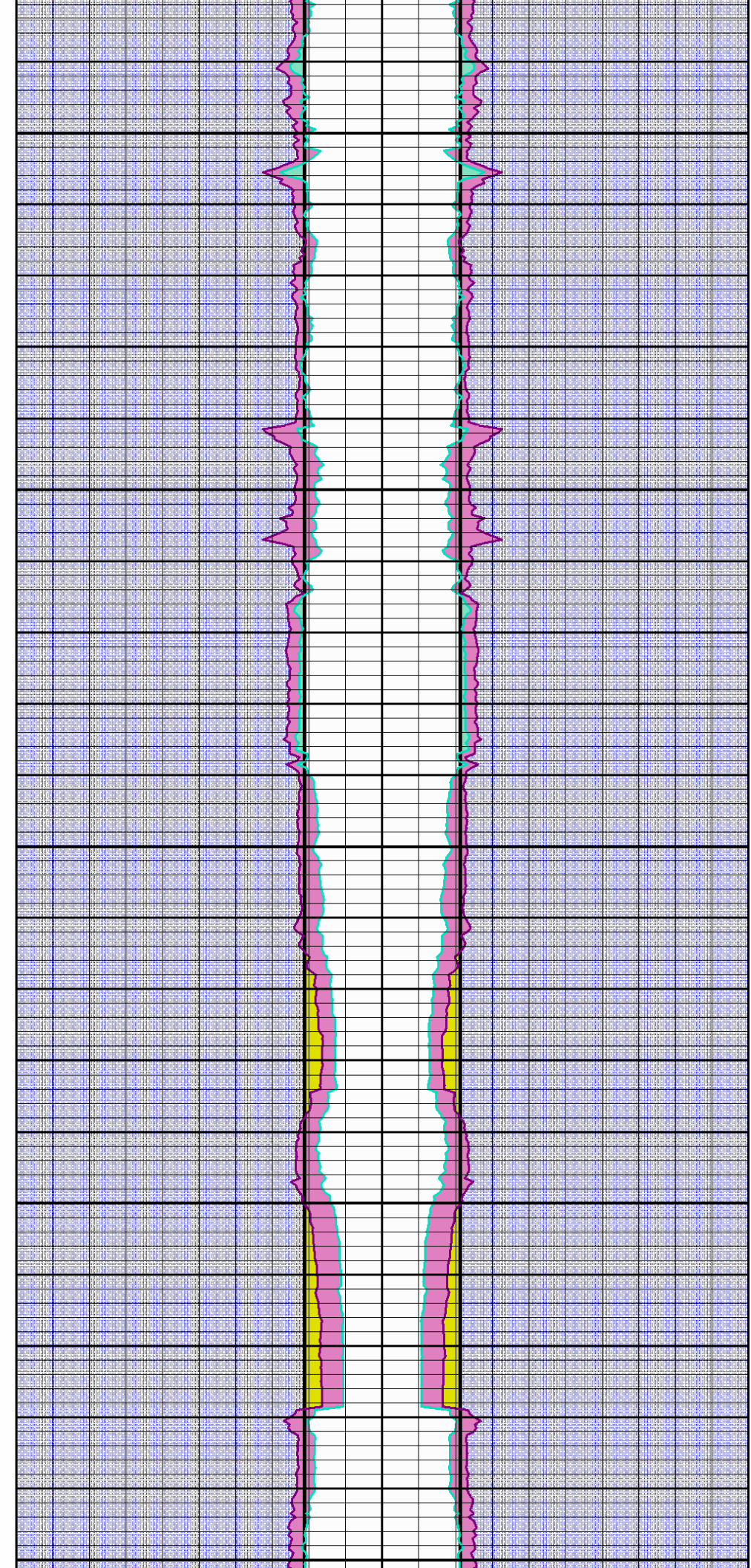
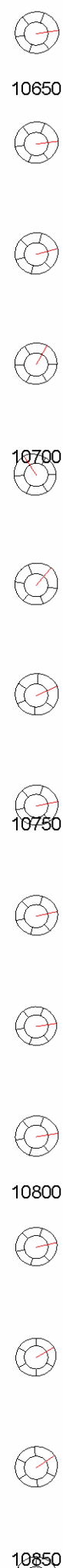
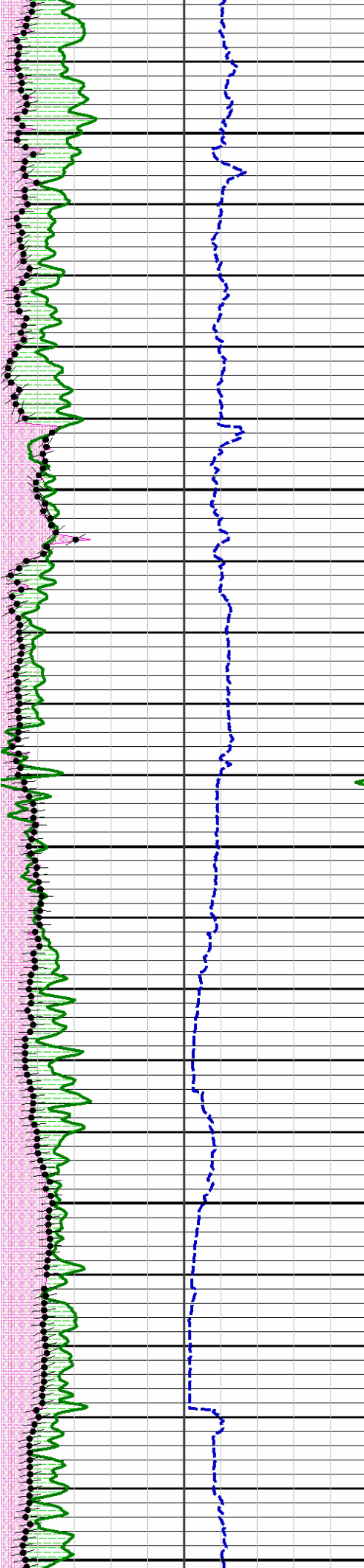
10450

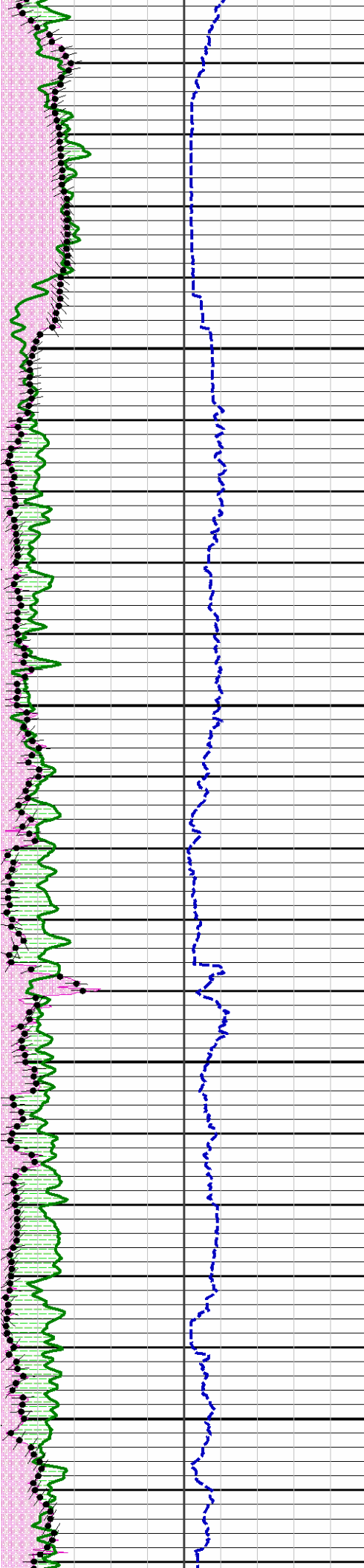
10500

10550

10600





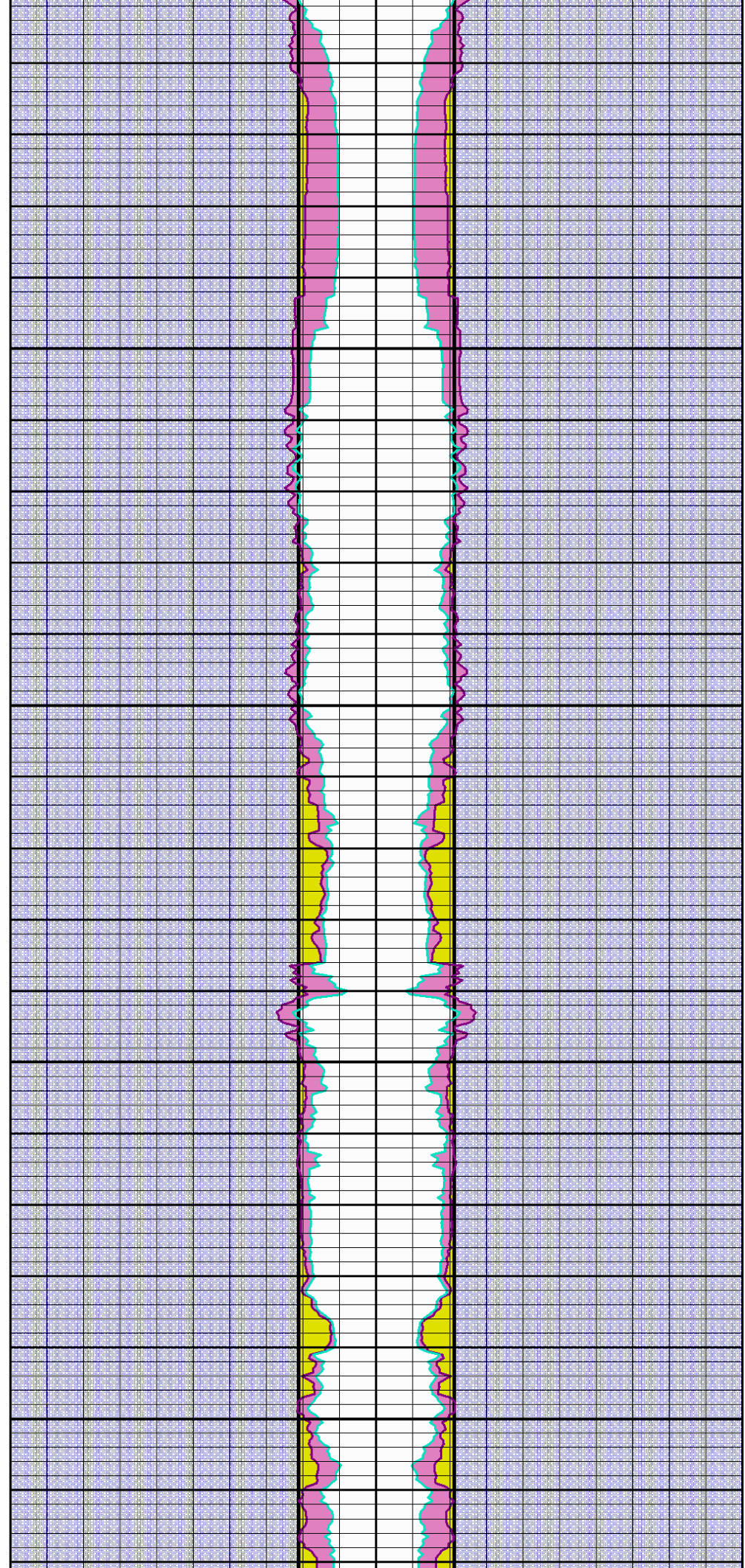


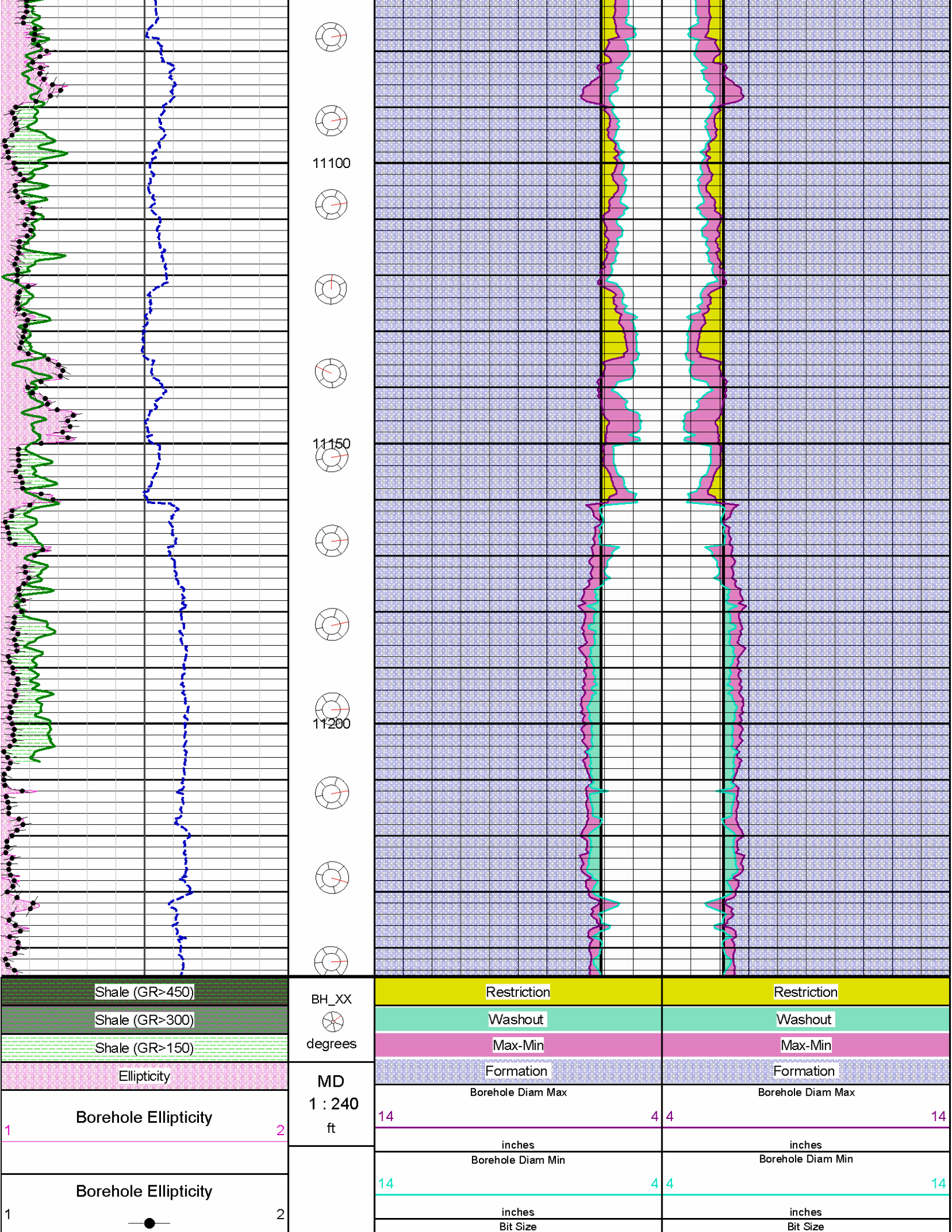
10900

10950

11000

11050





		14	4	4	14
Gamma API		inches		inches	
0150					
api					
Caliper					
010					
inches					

COMPANY	KERR-MCGEE OIL & GAS ONSHORE LP		
WELL	CAMP 4N-25HZ		
FIELD	WATTENBERG		
COUNTY	WELD	STATE	CO
HALLIBURTON		(XRMI) EXTENDED RANGE MICRO IMAGER CALIPER PLOT 1:240	