

1:240

WELL CAMP 4N-25HZ

FIELD WATTENBERG

COUNTY	WELD	STATE	CC
--------	------	-------	----

Location

SHL: 507' FSL & 495' FWL
SEC. 25 TWP. 3N RGE. 66W
LAT: 40.190423° , LONG: -104.733154°

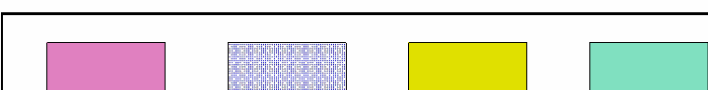
Elev.: K.B.	5068.00 ft
D.F.	5068.00 ft
G.L.	5043.00 ft

Date Processed 29-NOV-11 Processed At DENVER FRSS

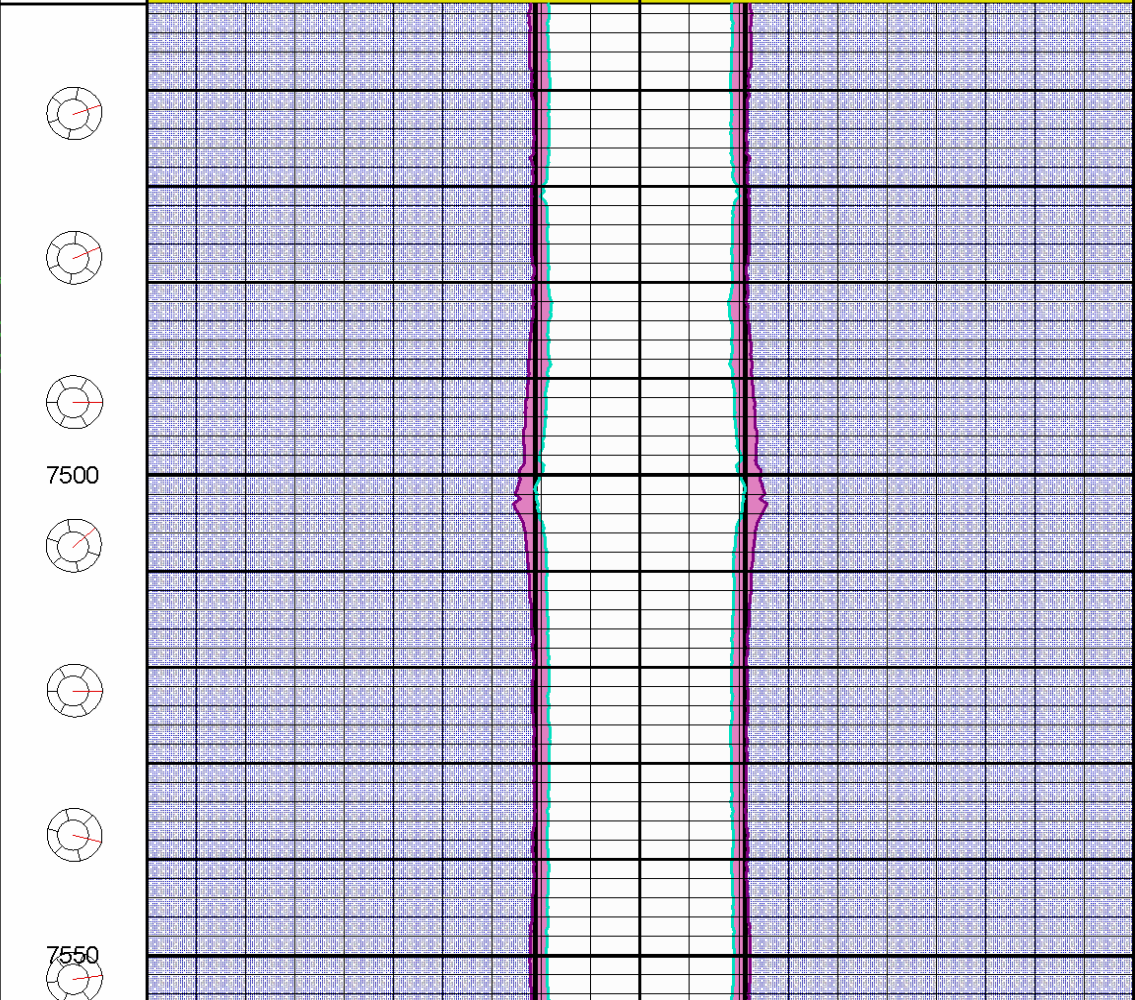
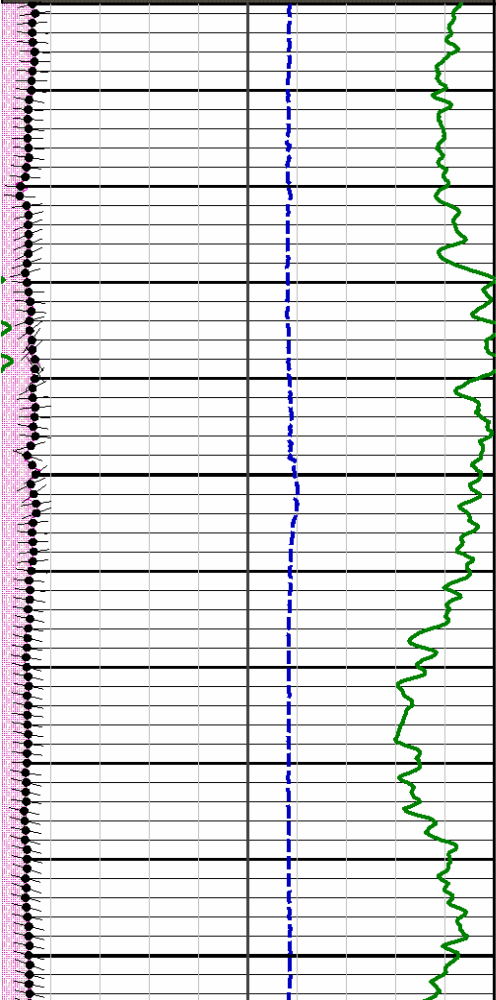
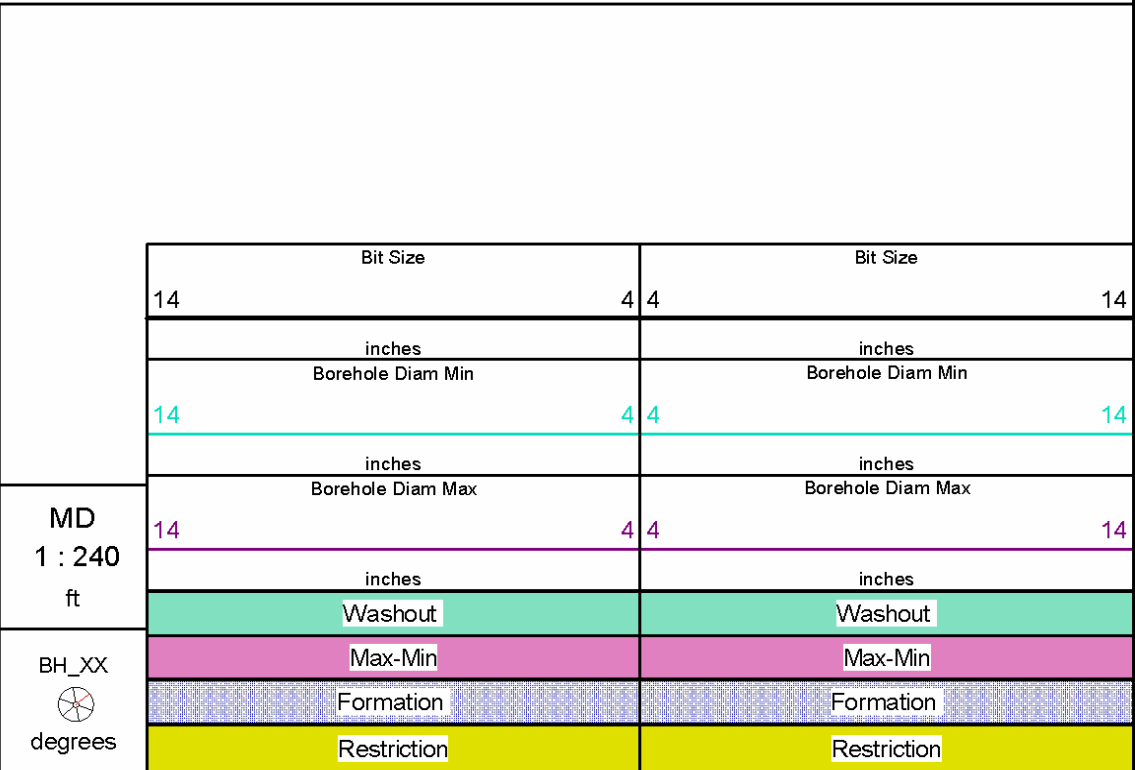
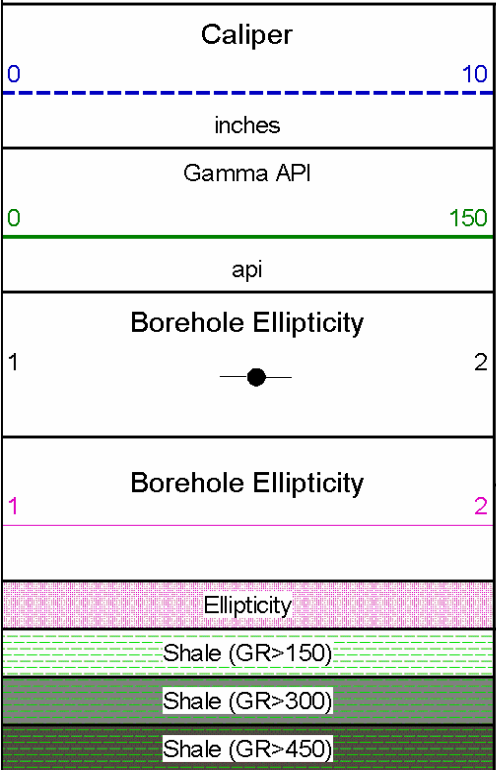
Processed At DENVER FRS

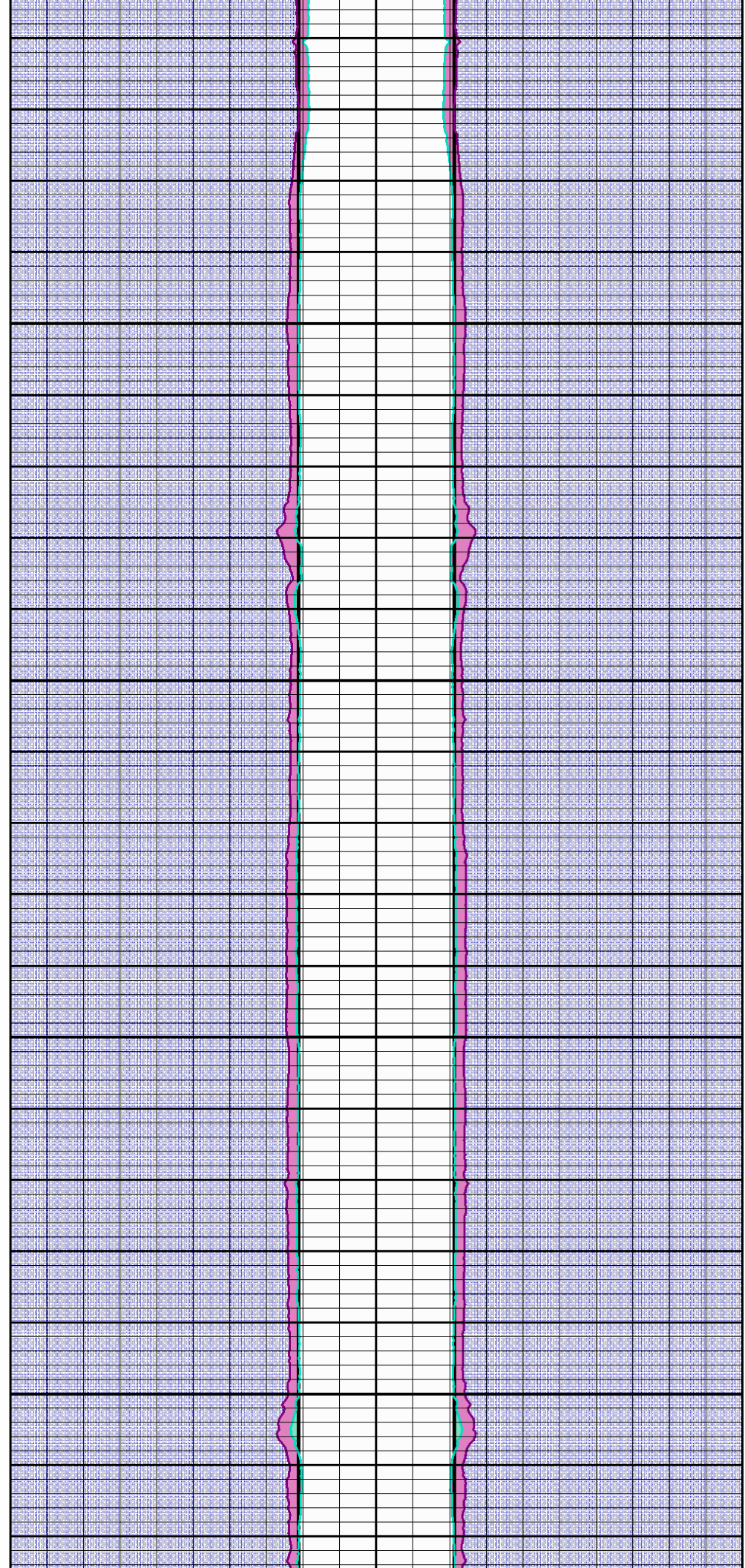
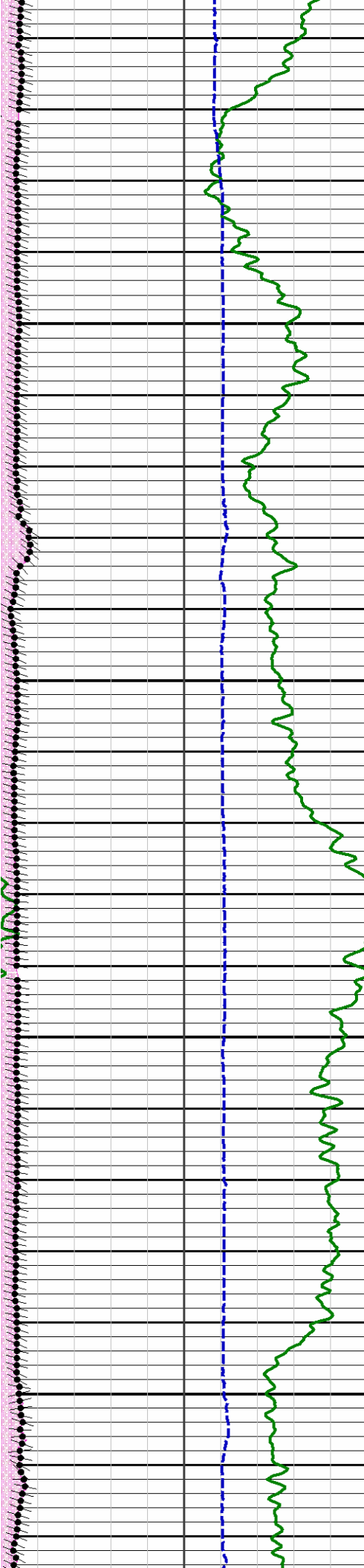
Processed At DENVER FRS

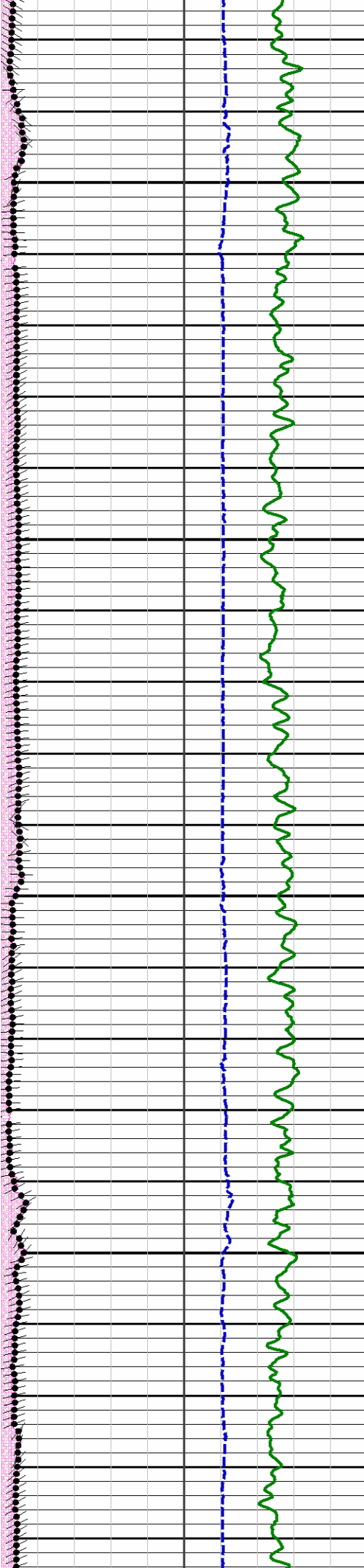
E-1.4.1.1-000

[illegible]

Note:Borehole restrictions can adversely affect the borehole breakout results.
Note: Yellow shading is used for borehole restrictions flag.







7800



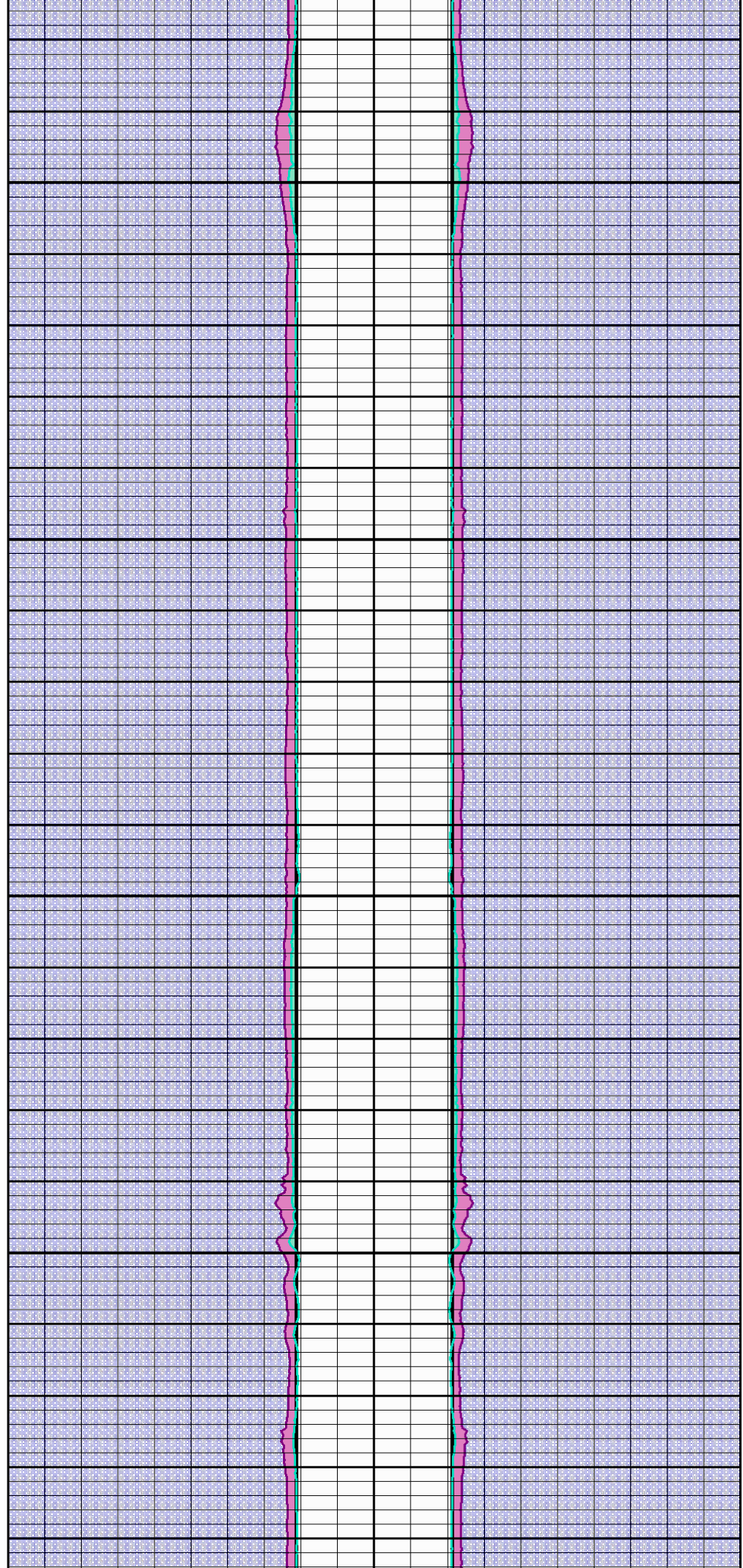
7850

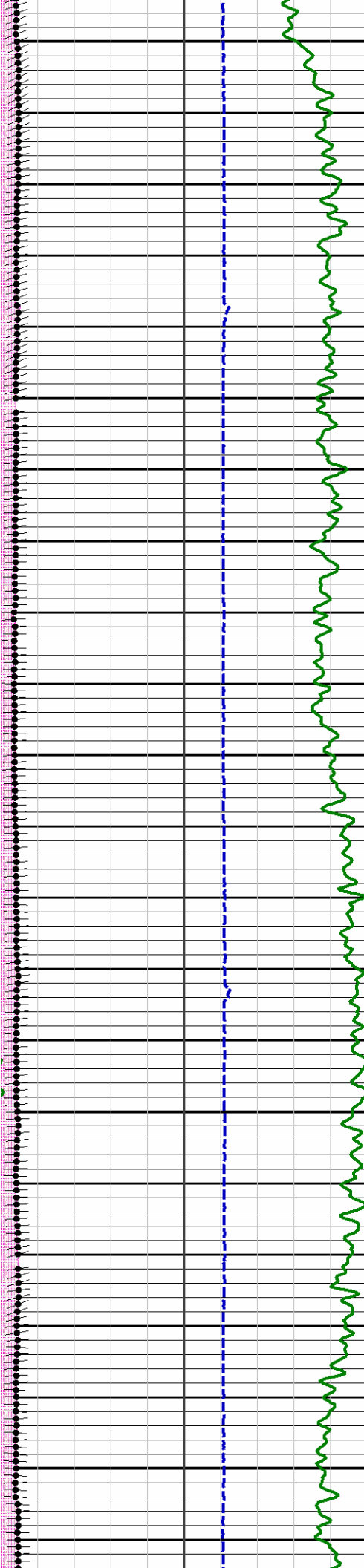


7900



7950





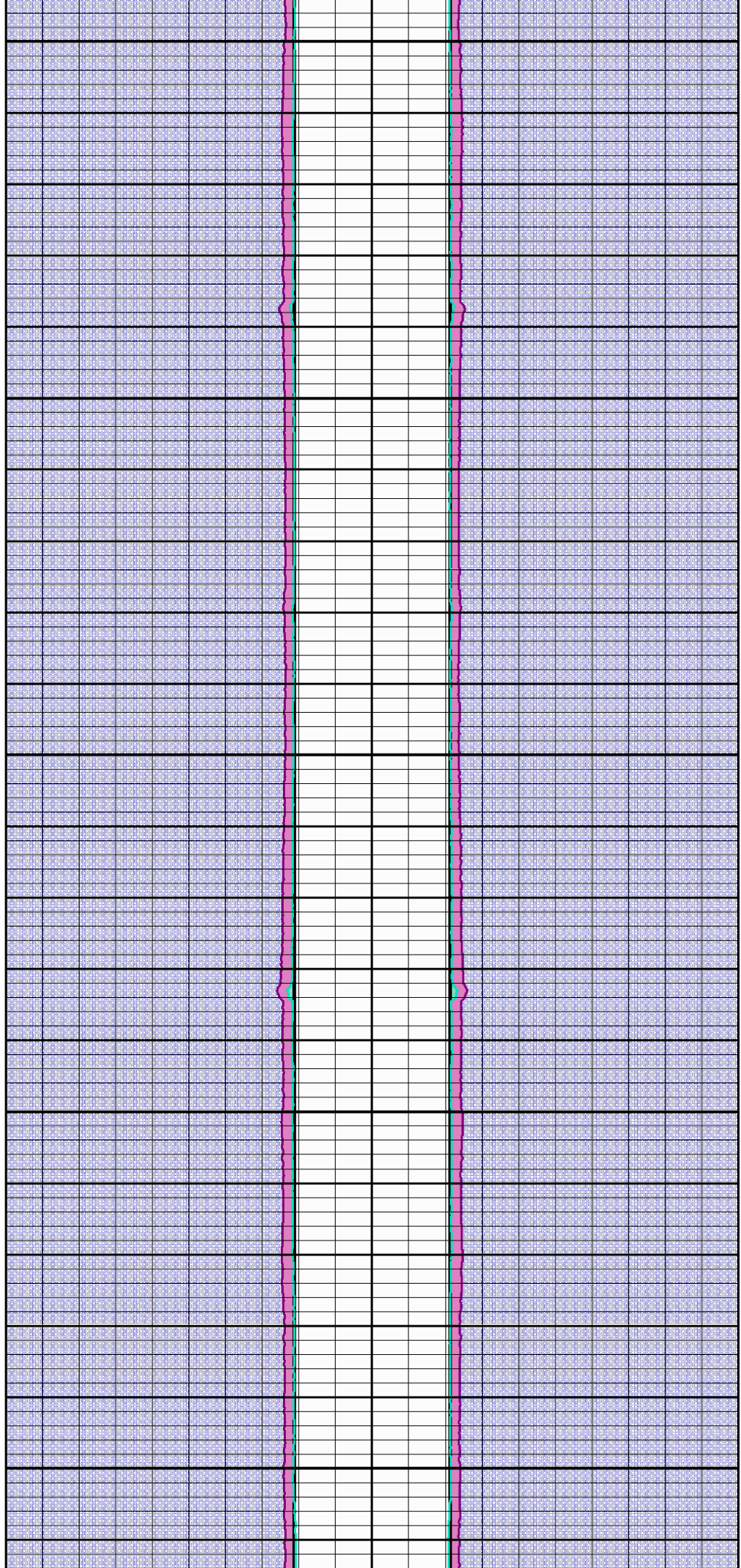
8000

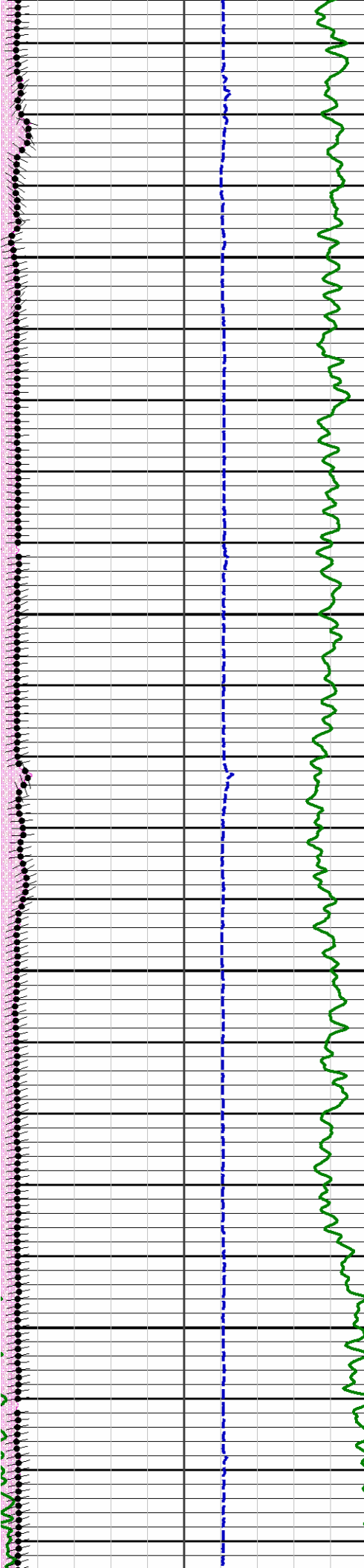
8050

8100

8150

8200



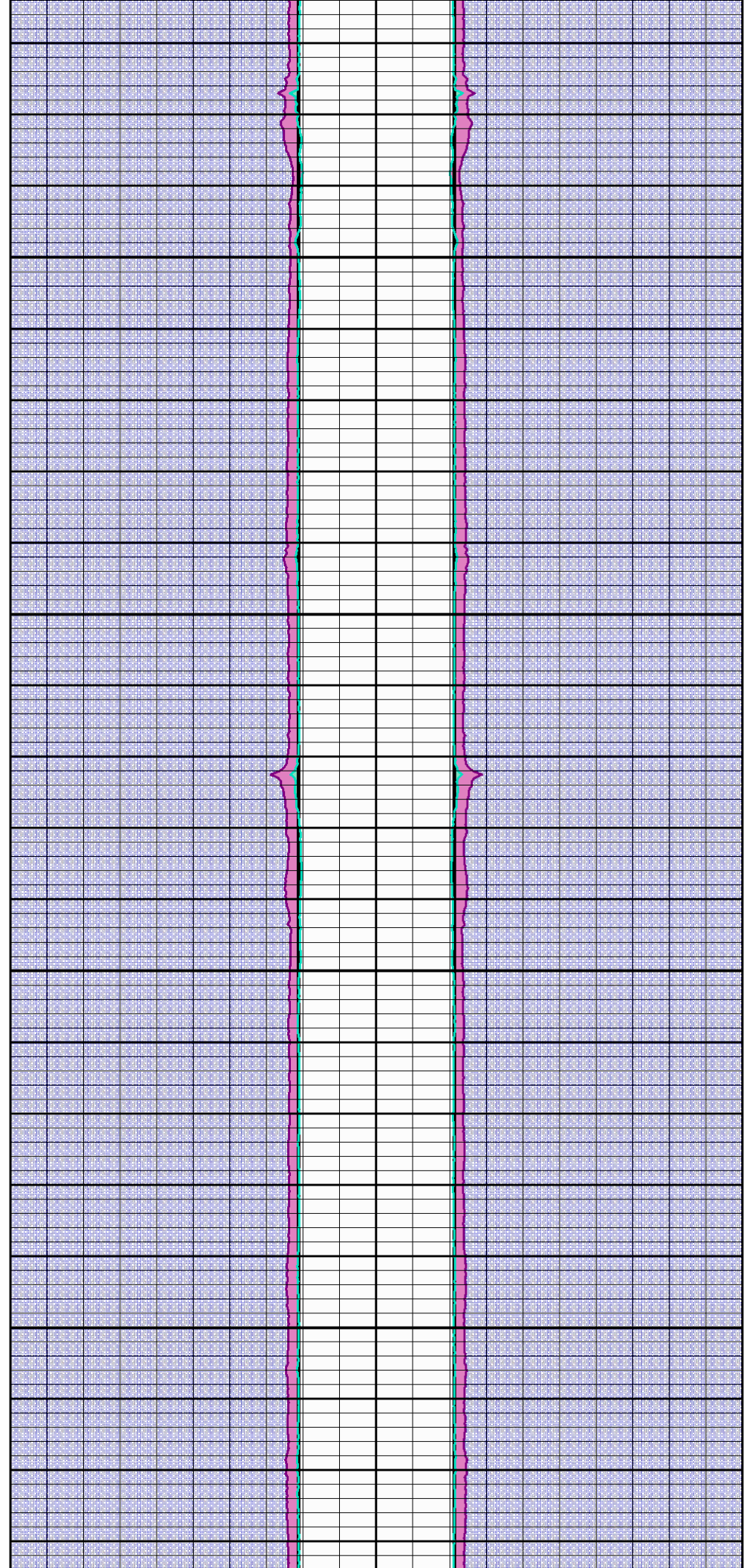


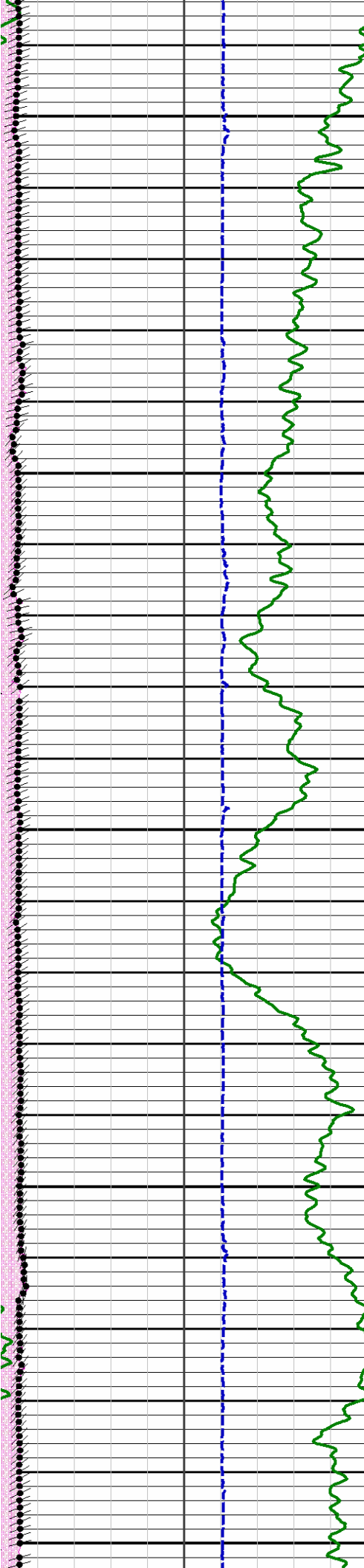
8250

8300

8350

8400





8450



8500



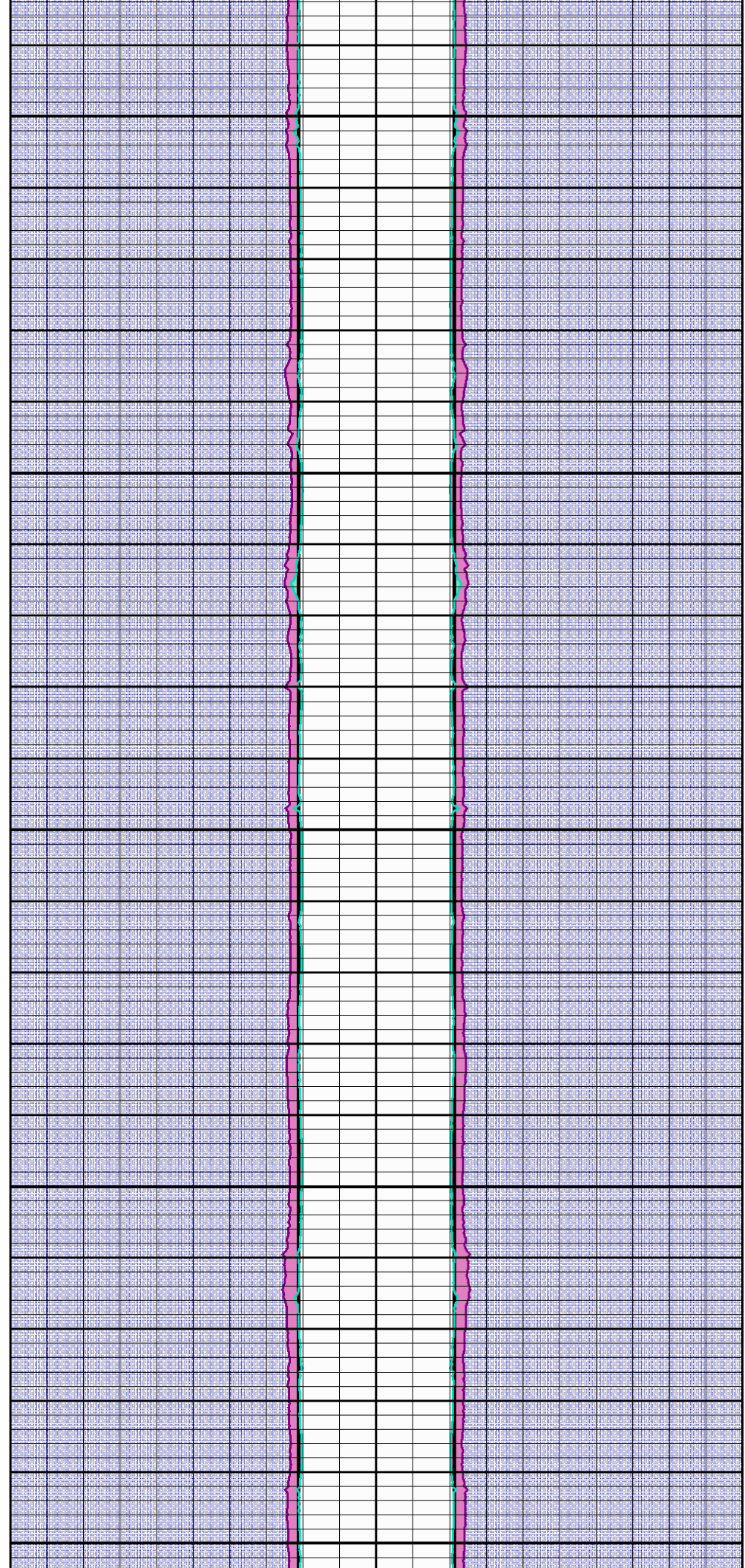
8550

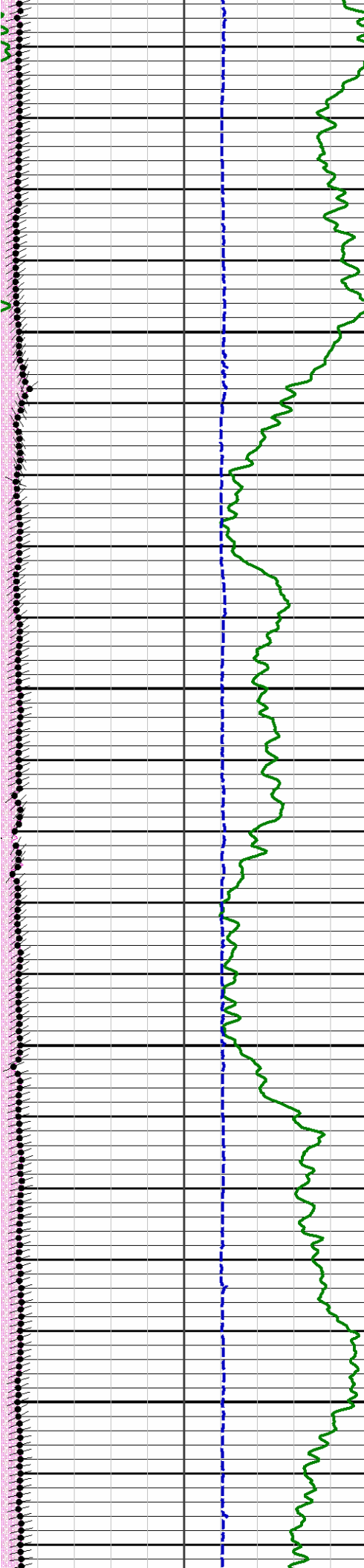


8600



8650



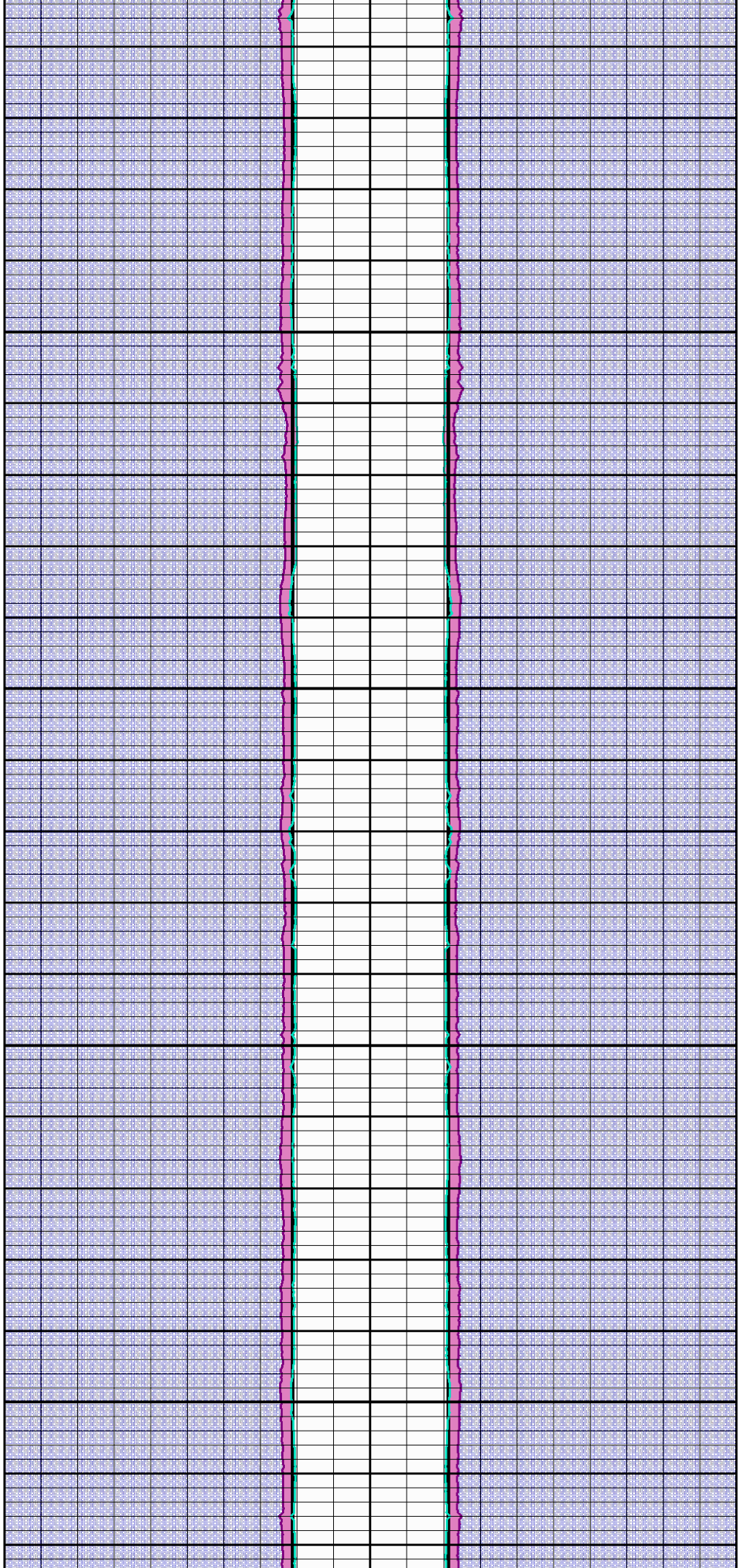


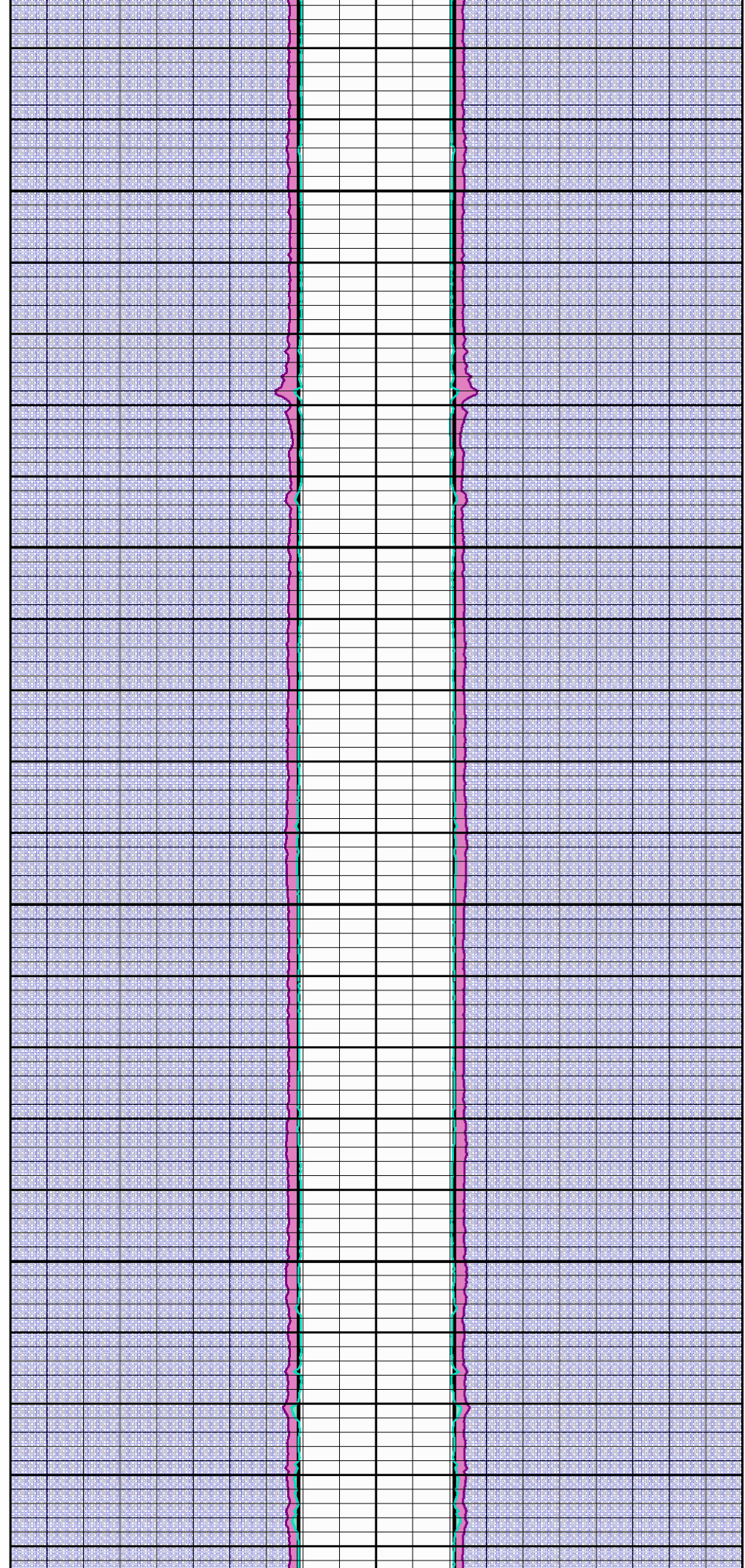
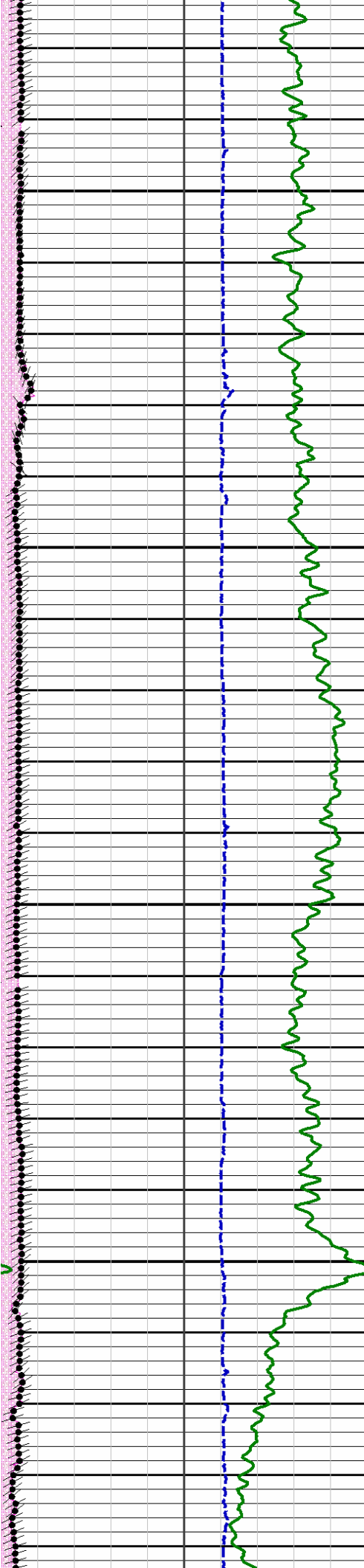
8700

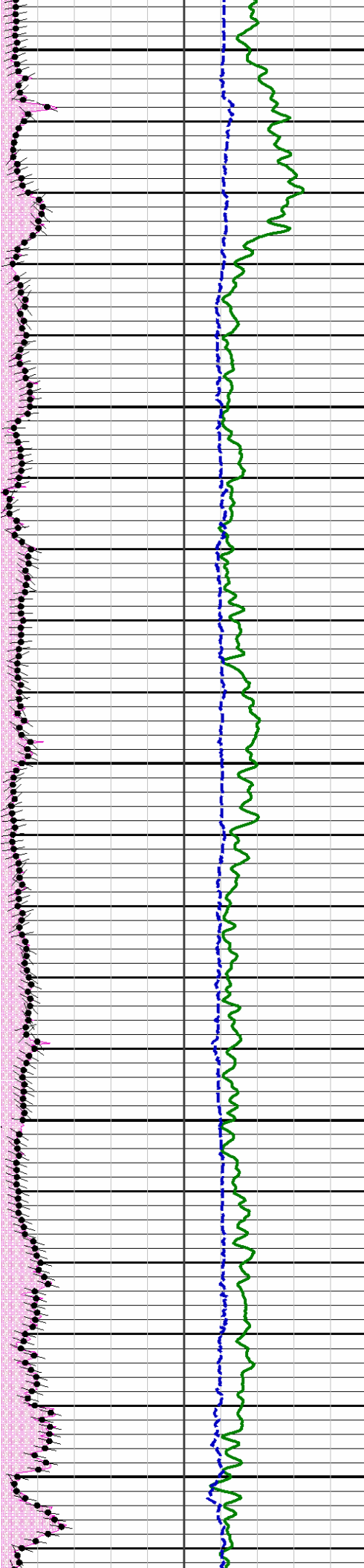
8750

8800

8850







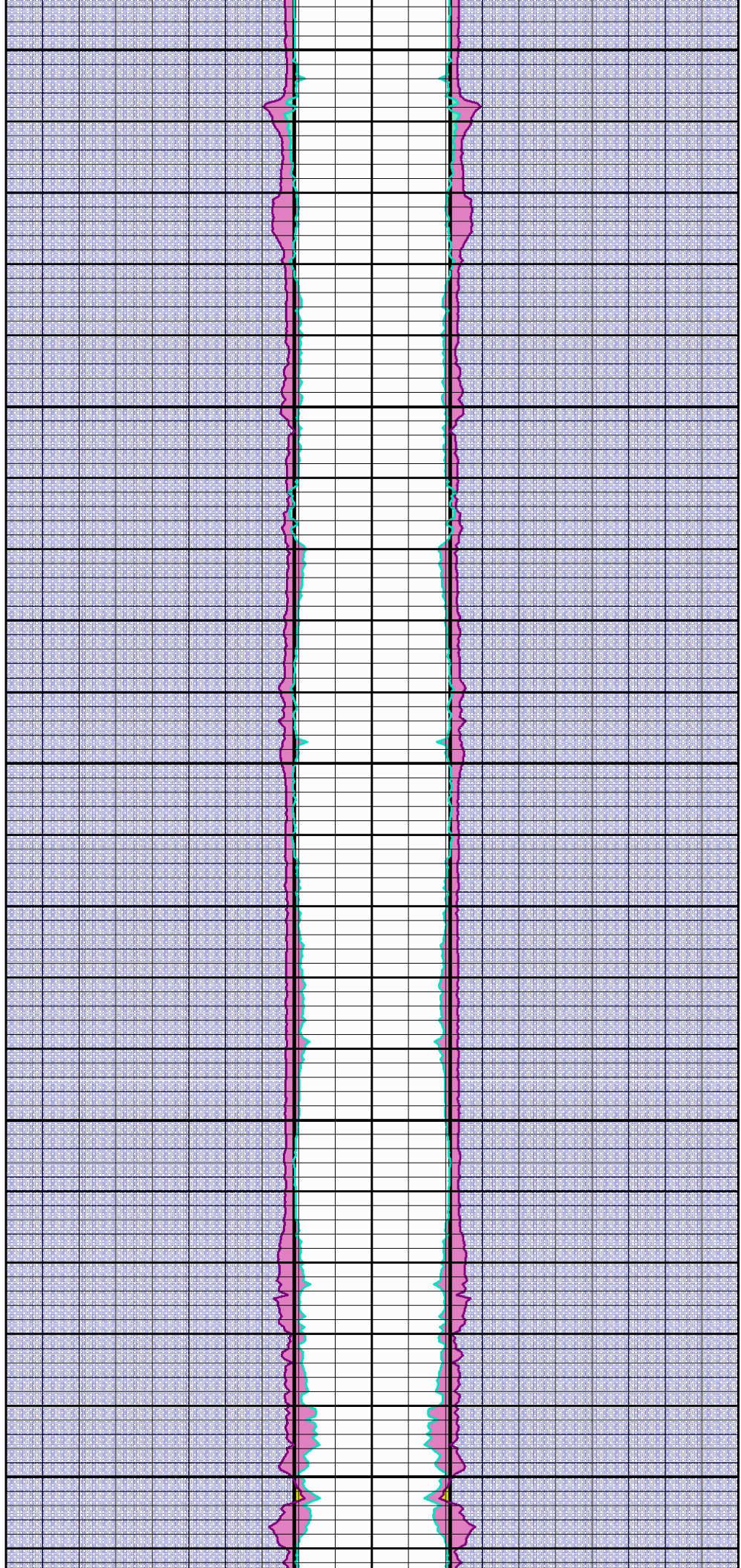
9150

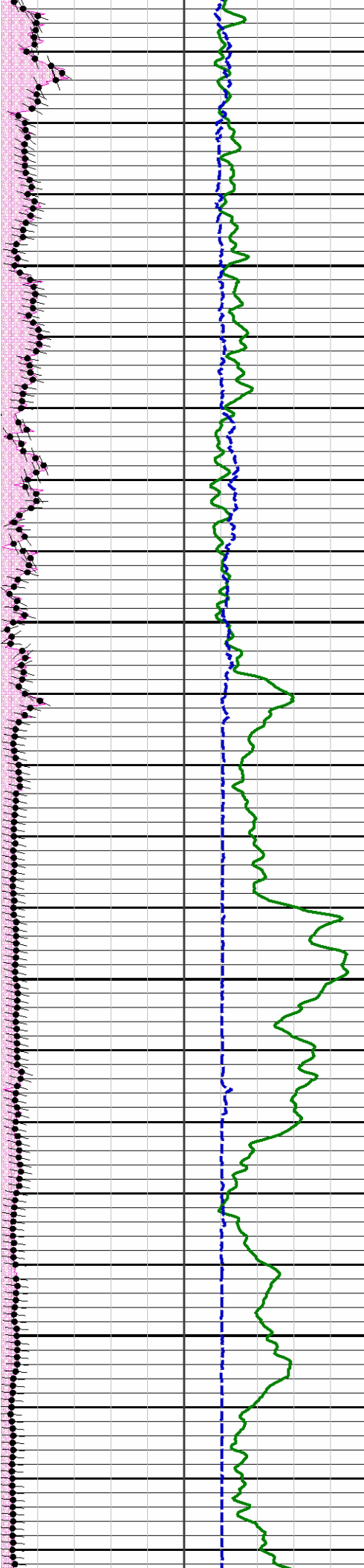


9250

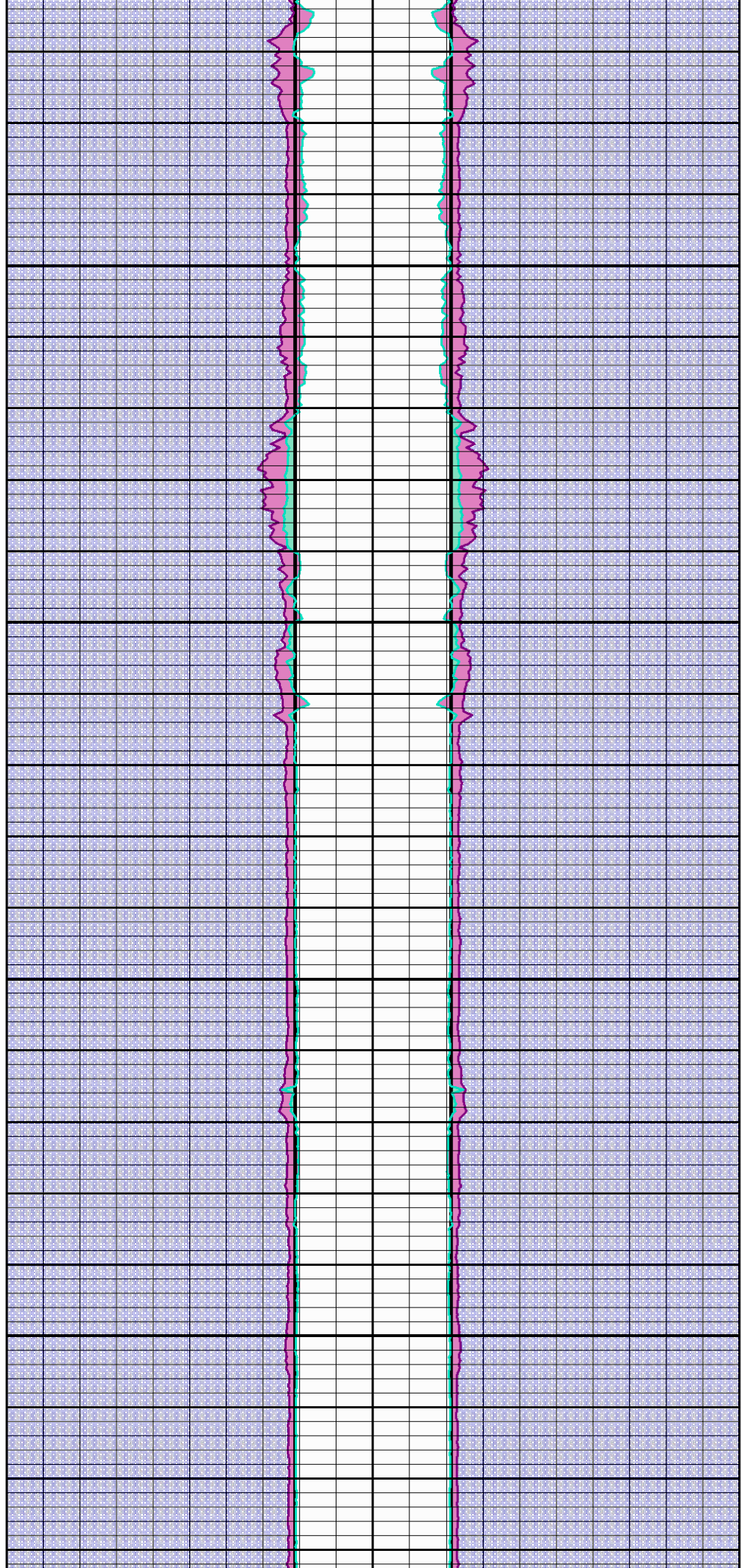


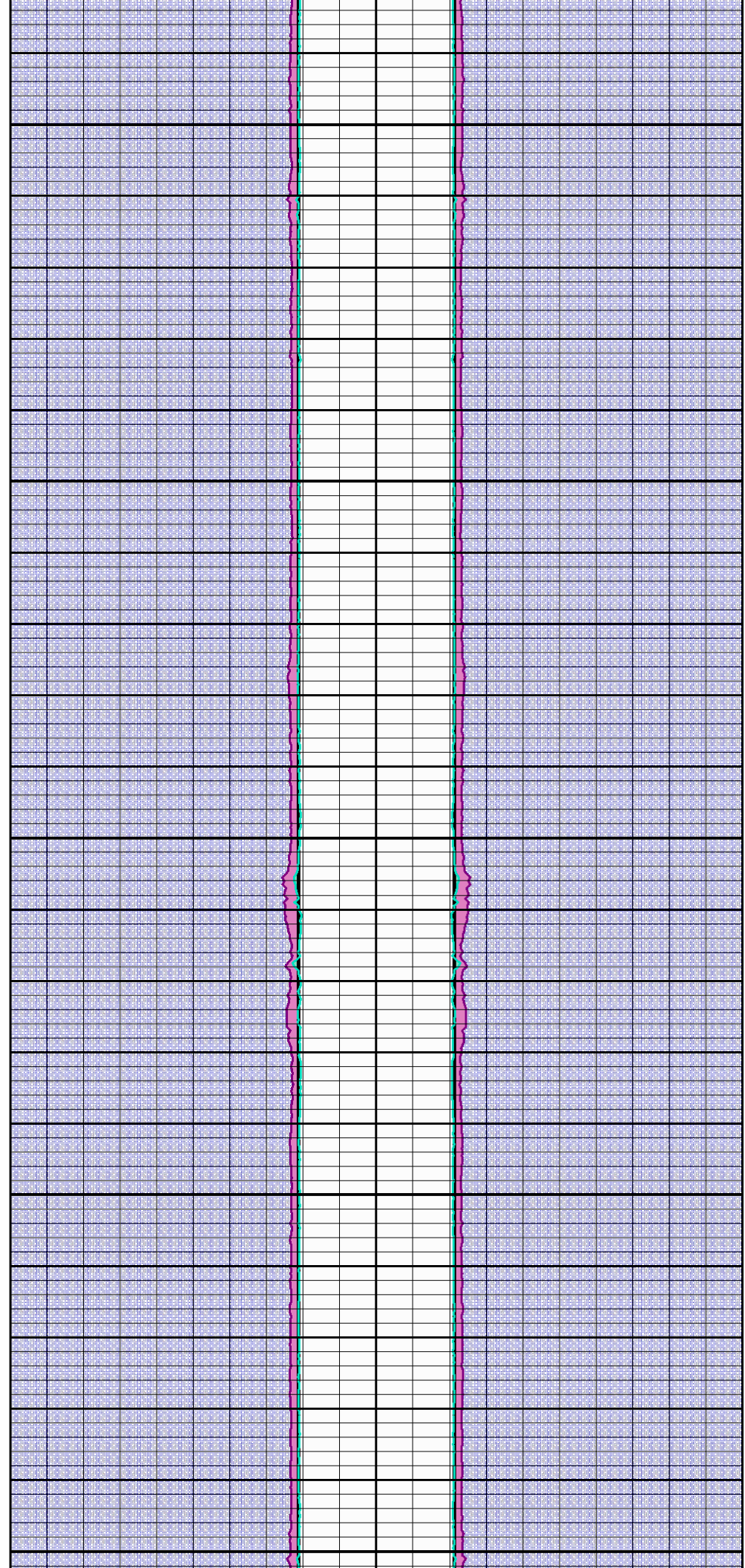
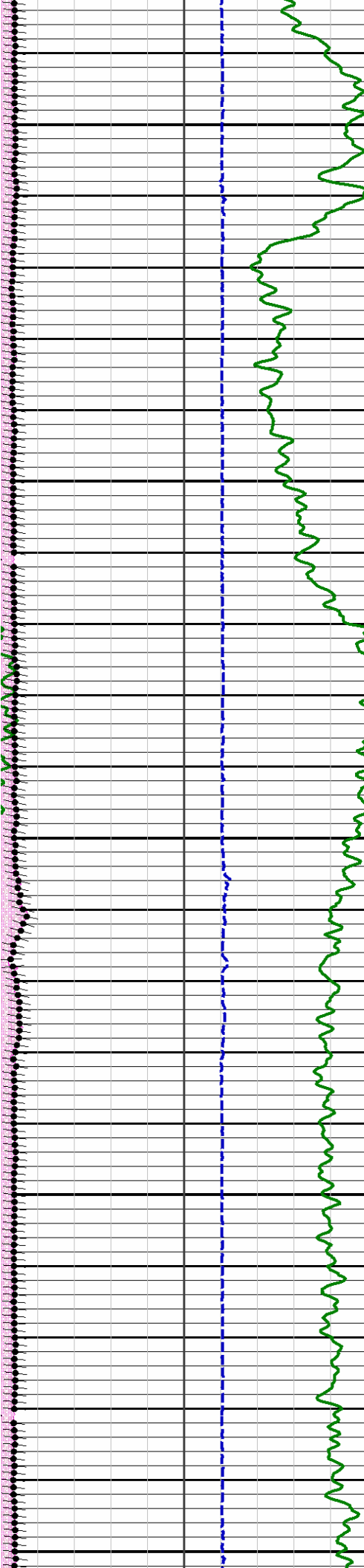
9300

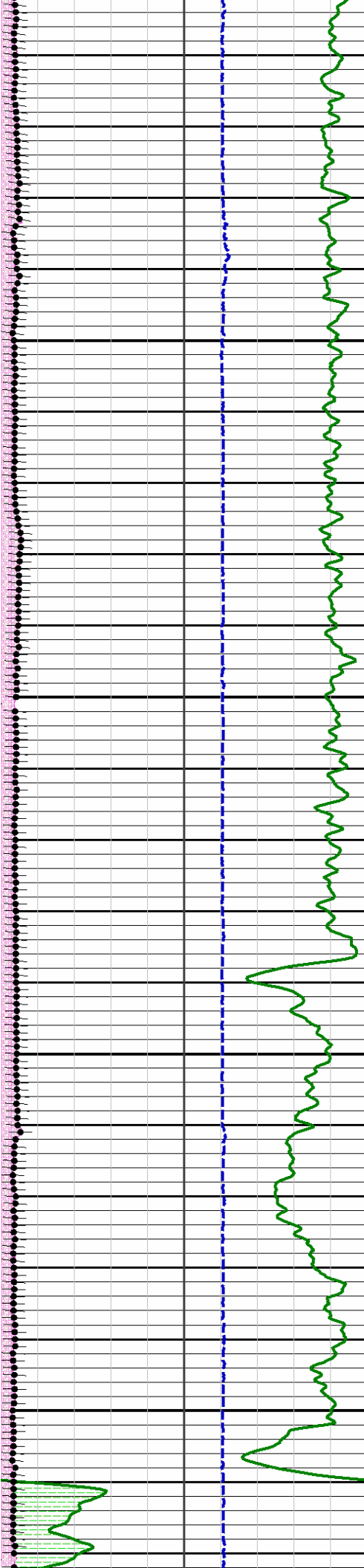




9450





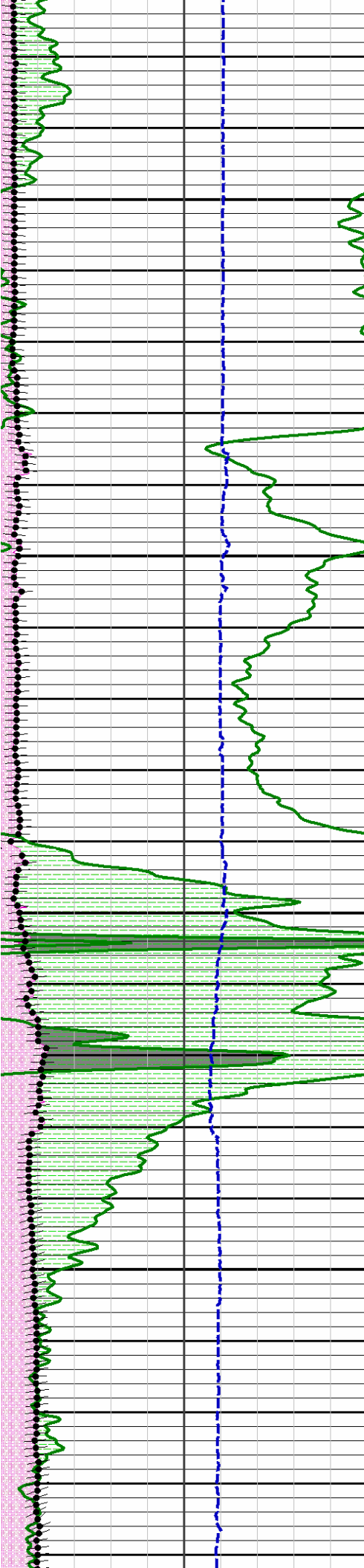


9860

9850

9900

9950

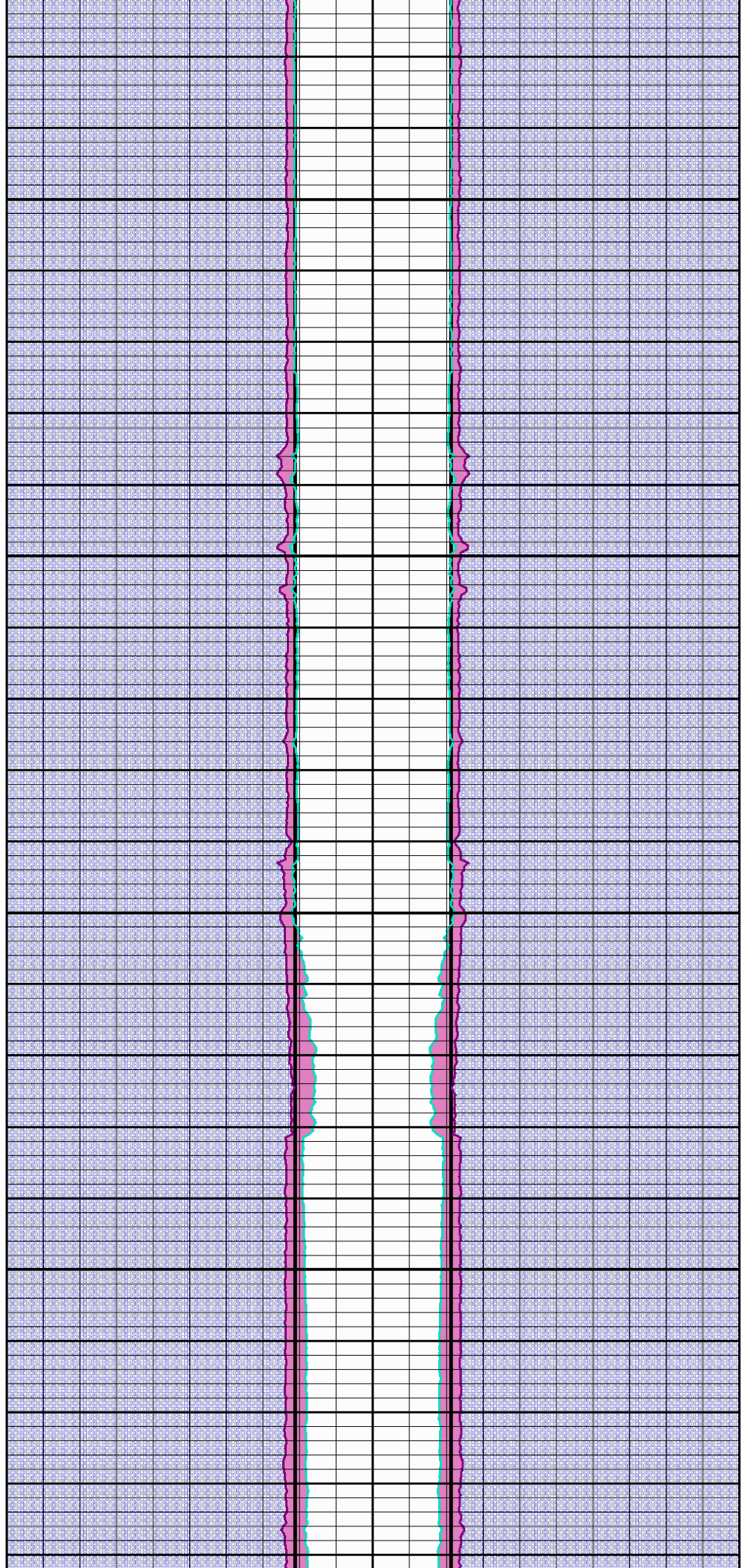


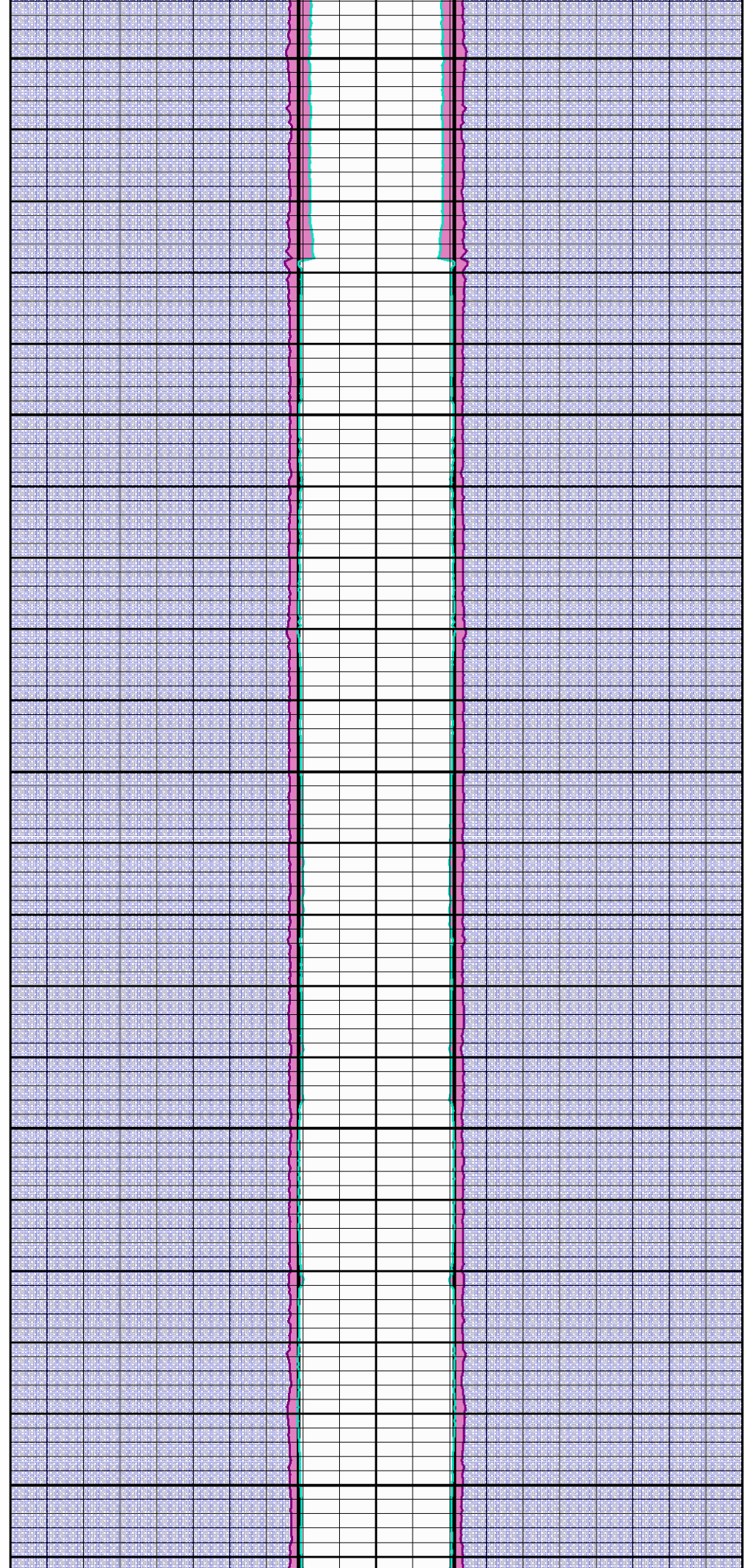
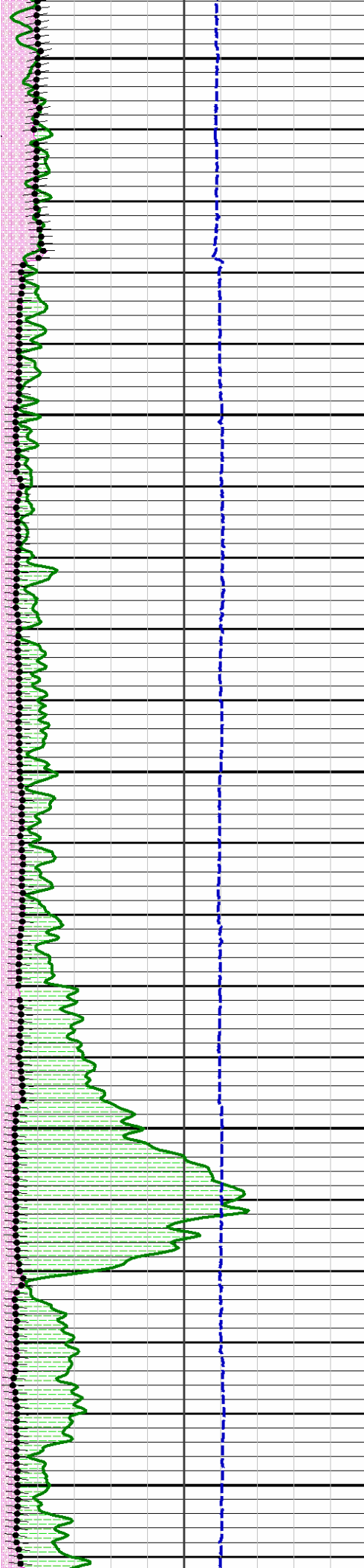
10000

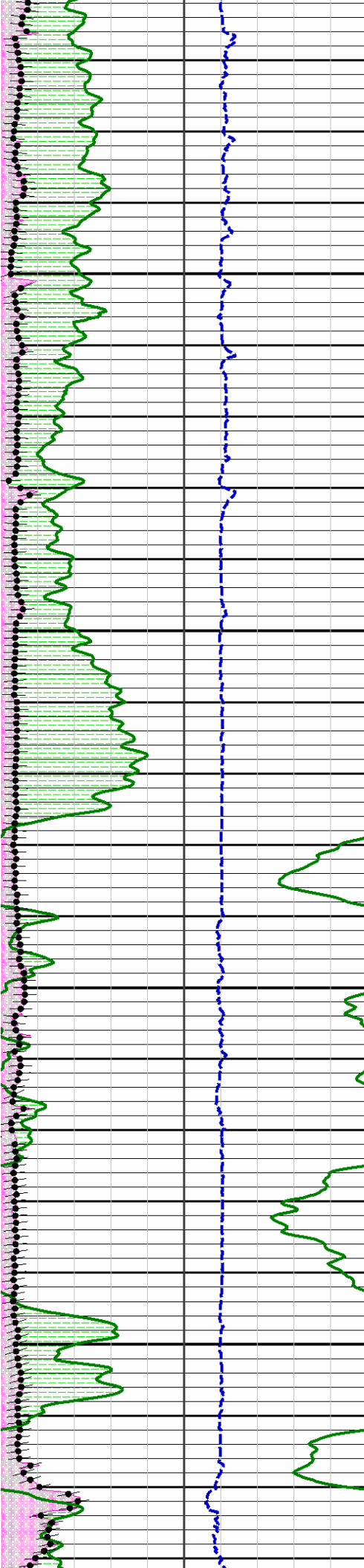
10050

10100

10450





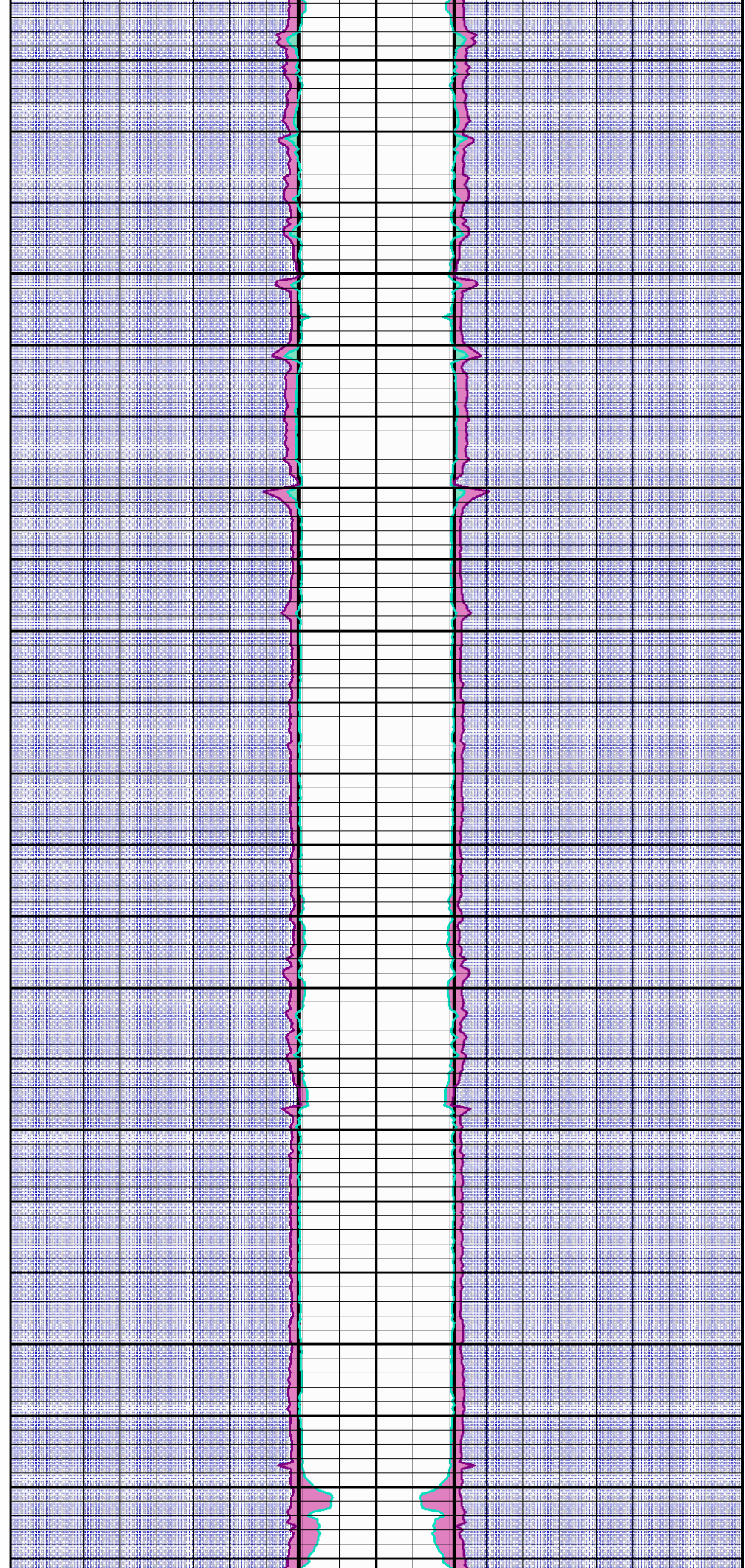


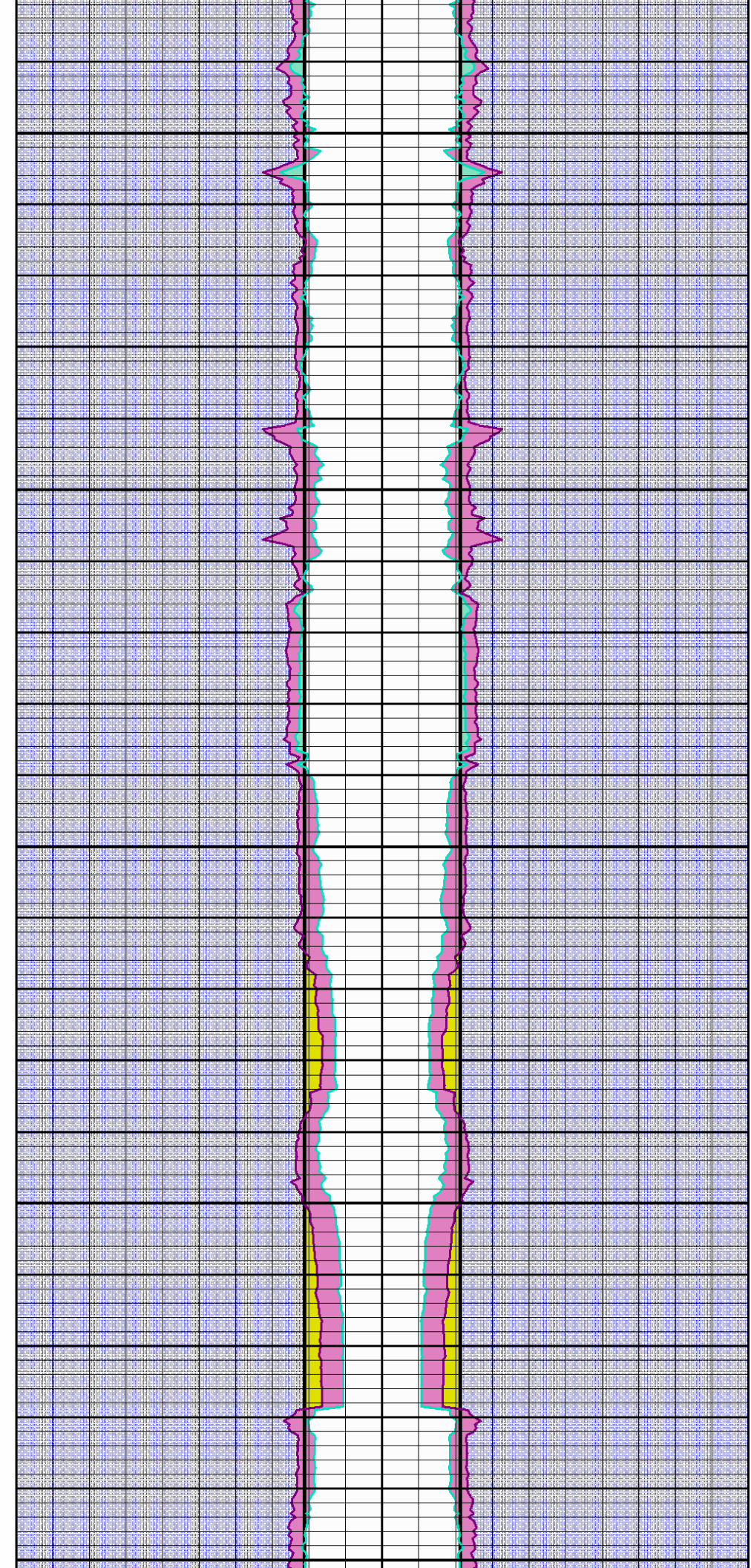
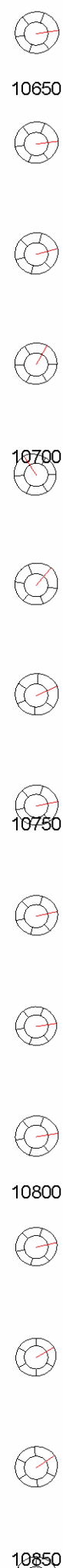
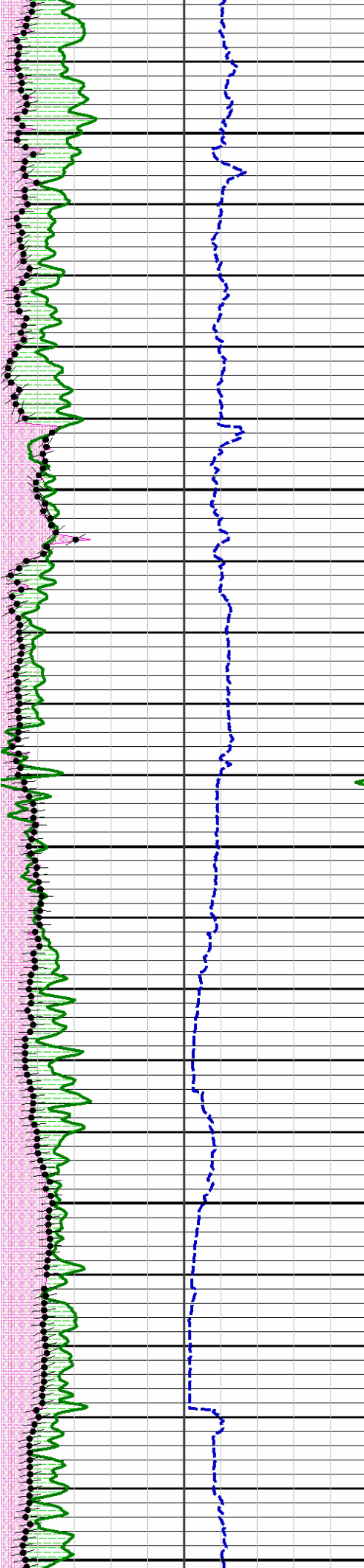
10450

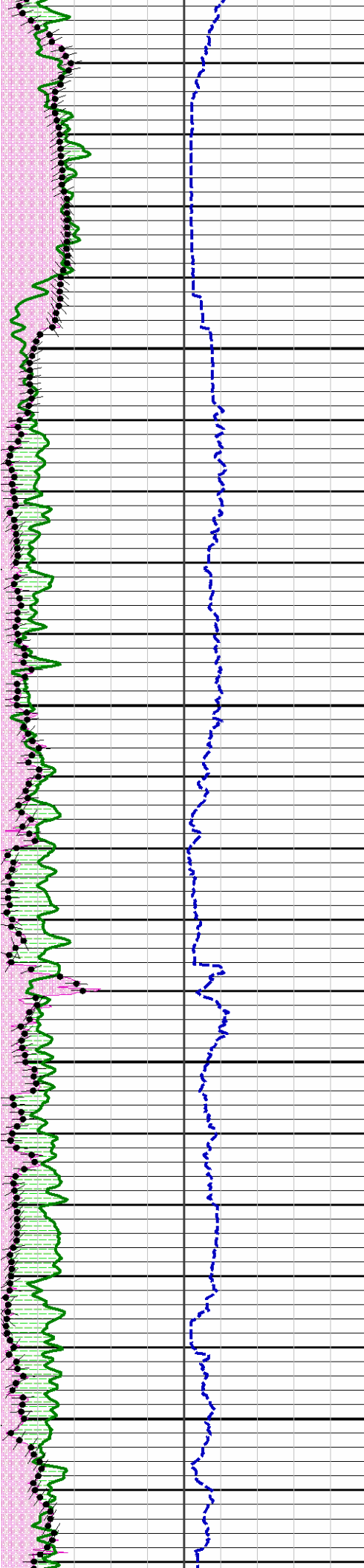
10500

10550

10600





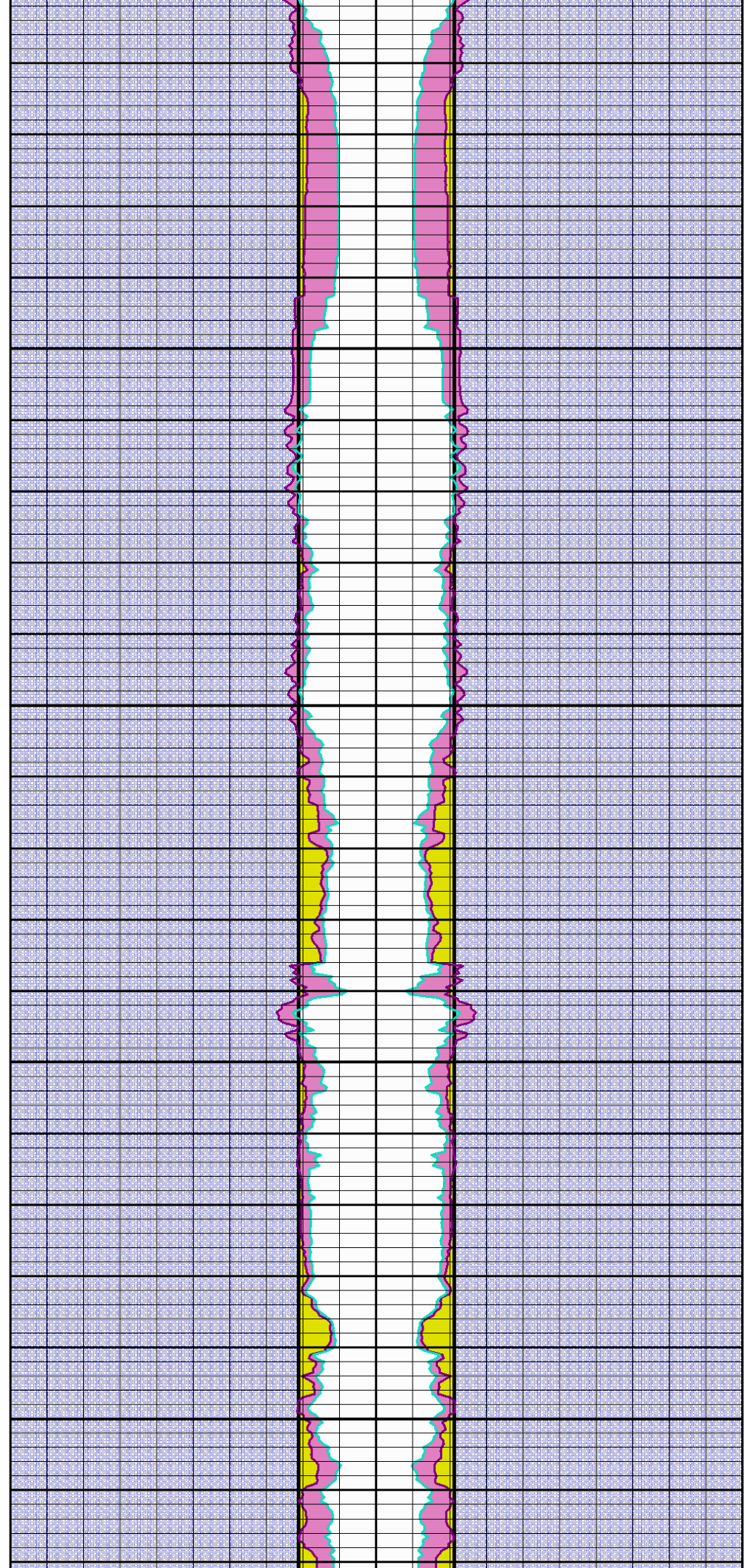


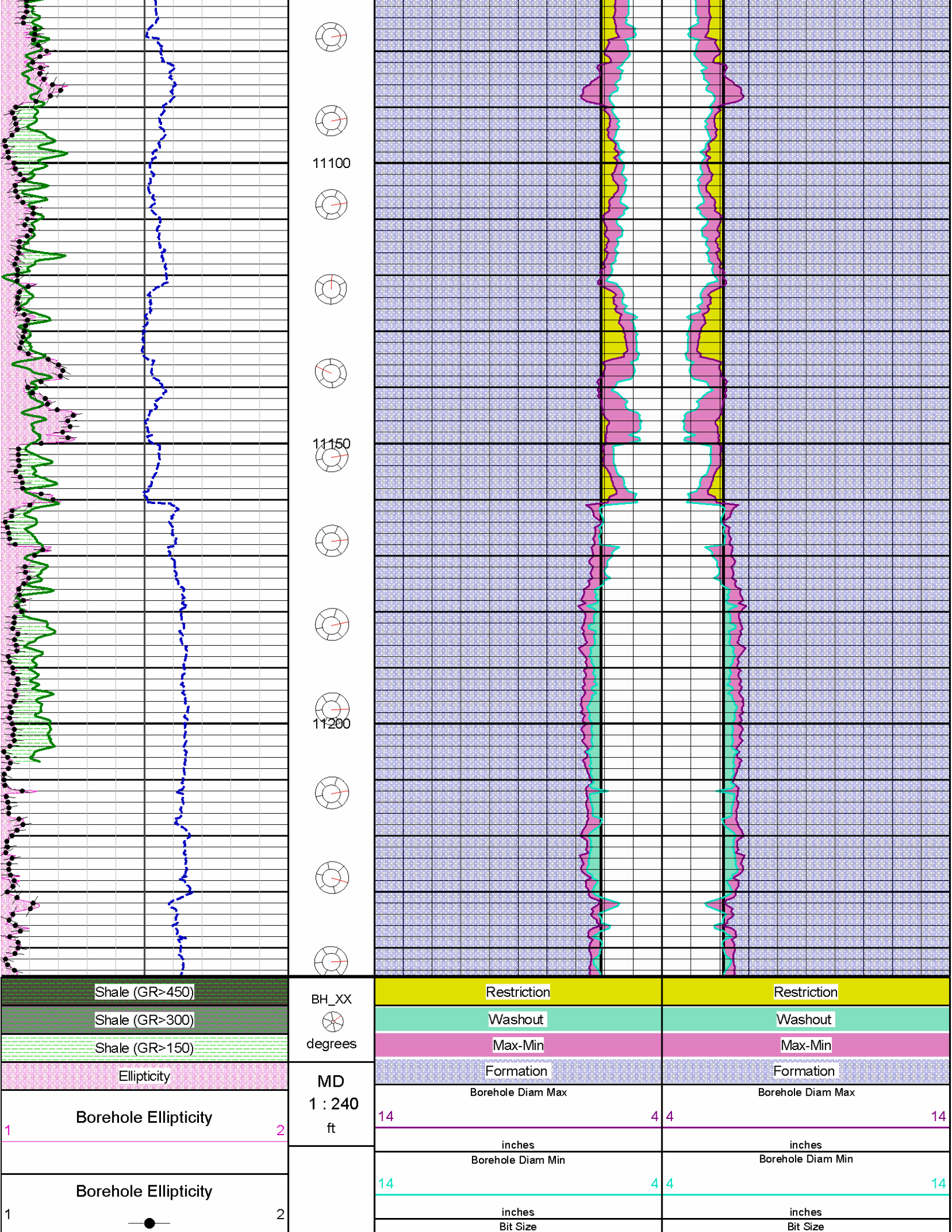
10900

10950

11000

11050





		14	4	4	14
Gamma API		inches		inches	
0150					
api					
Caliper					
010					
inches					

COMPANY	KERR-MCGEE OIL & GAS ONSHORE LP		
WELL	CAMP 4N-25HZ		
FIELD	WATTENBERG		
COUNTY	WELD	STATE	CO
HALLIBURTON		(XRMI) EXTENDED RANGE MICRO IMAGER CALIPER PLOT 1:240	