

NOBLE ENERGY, INC.
ROHN FEDERAL PC LB21-72HN,
ROHN PC LB27-68HN & ROHN LB22-62HN
LOCATED IN WELD COUNTY, COLORADO
SECTION 21, T9N, R60W, 6th P.M.

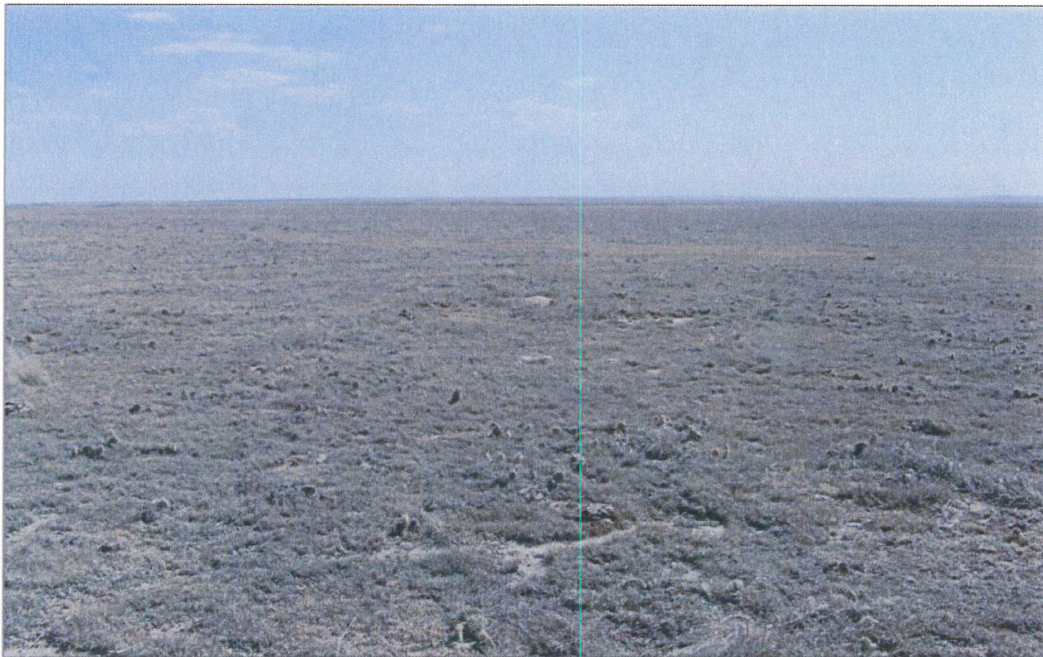


PHOTO: VIEW OF REFERENCE AREA

CAMERA ANGLE: SOUTHERLY



- Since 1964 -

**U
E
L
S**

Uintah Engineering & Land Surveying
85 South 200 East Vernal, Utah 84078
(435) 789-1017 * FAX (435) 789-1813

REFERENCE AREA
PHOTO

07 **31** **12**
MONTH DAY YEAR

TAKEN BY: D.S. DRAWN BY: B.G. REV: 08-07-12 J.L.H.

PHOTO
REF