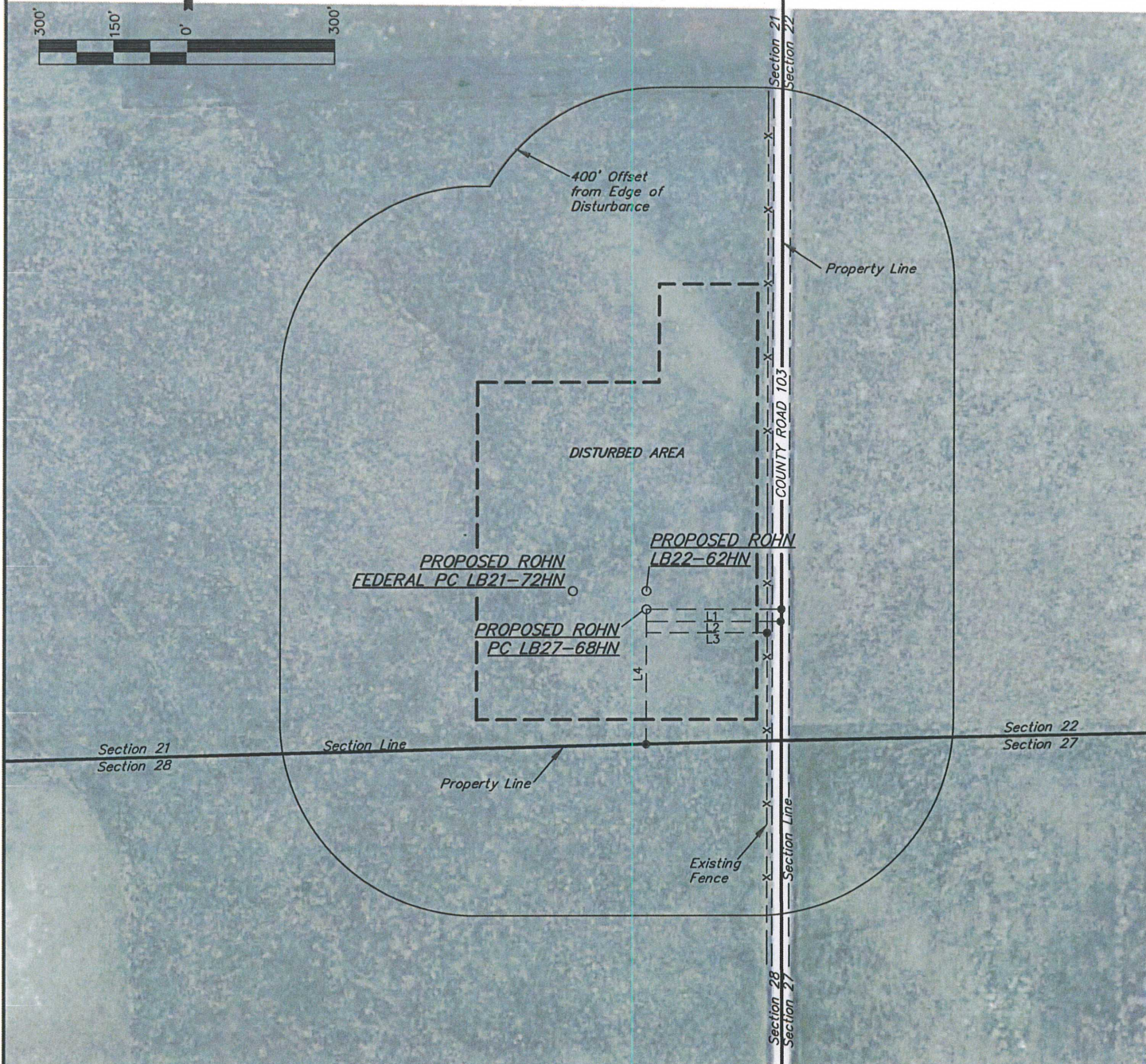


NOBLE ENERGY, INC.

LOCATION DRAWING

ROHN FEDERAL PC LB21-72HN,
ROHN PC LB27-68HN & ROHN LB22-62HN
SECTION 21, T9N, R60W, 6th P.M.

DATE: 07-31-12
DRAWN BY: S.R.L.
REVISED: 08-07-12



FEATURE TABLE

EXISTING FEATURE	DIRECTION	LENGTH
PROPERTY LINE	SOUTH	275'
PROPERTY LINE	EAST	275'
RAIL ROAD	NONE WITHIN 1 MILE RADIUS	
COUNTY ROAD 103	EAST	274'
EXISTING POWERLINE	NONE WITHIN 1 MILE RADIUS	
BUILDING	N01'E	1,678'

LINE TABLE

LINE	DIRECTION	LENGTH	FEATURE
L1	EAST	275'	SECTION LINE
L2	EAST	274'	COUNTY ROAD 103
L3	EAST	246'	EXISTING FENCE
L4	SOUTH	275'	SECTION LINE

PAD DETAILS:

WELL HEAD SPACING = 37.5' & 150'

UINTAH ENGINEERING & LAND SURVEYING
85 So. 200 East * Vernal, Utah 84078 * (435) 789-1017