

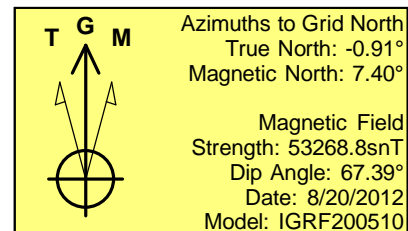
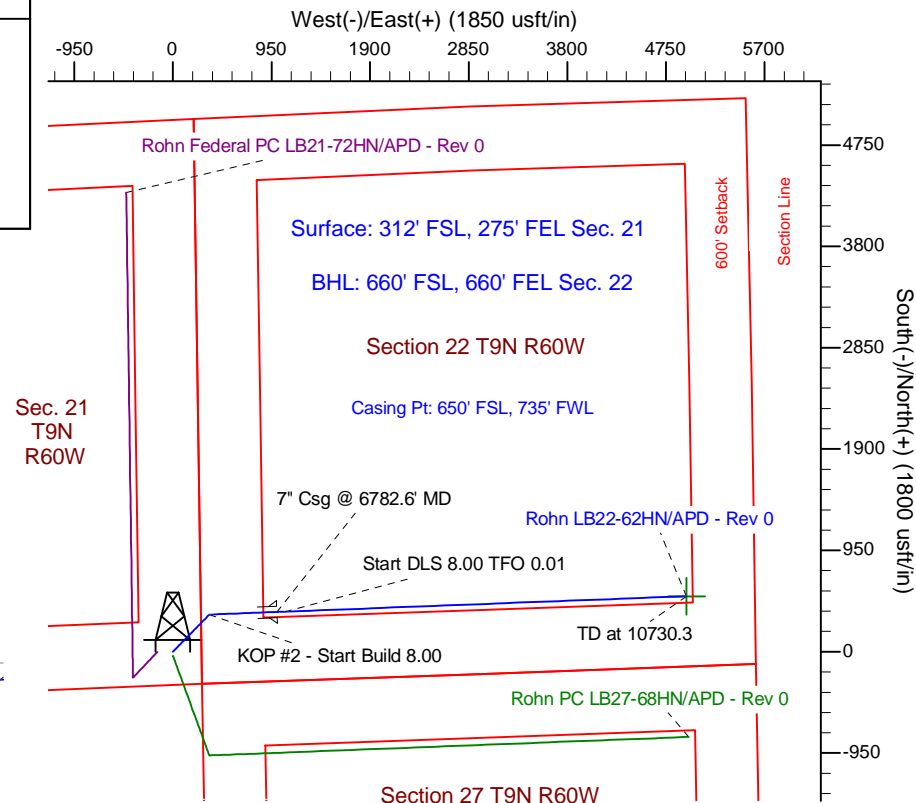
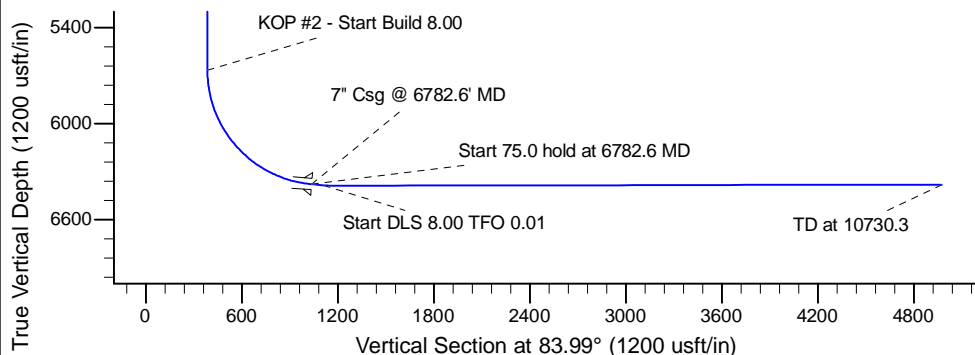
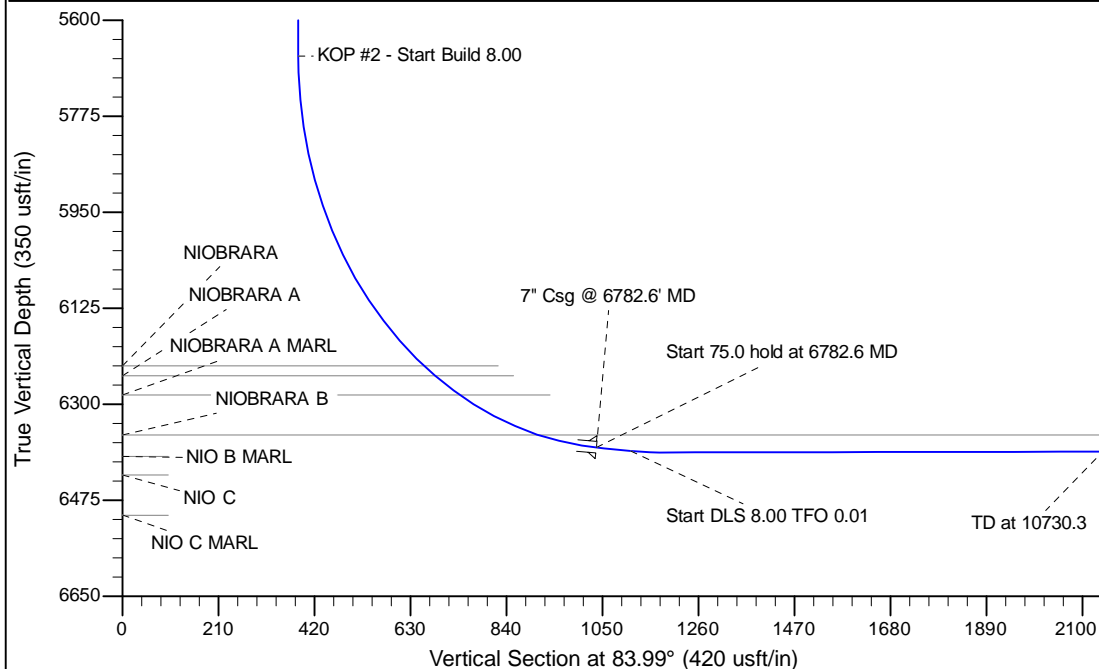
Project: Wattenberg Field  
 Site: LB (21-T09N-R60W) Weld County, CO  
 Well: Rohn LB22-62HN  
 Wellbore: Original Drilling  
 Design: APD - Rev 0

# Northern Region Drilling

Geodetic System: US State Plane 1983  
 Datum: North American Datum 1983  
 Ellipsoid: GRS 1980  
 Zone: Colorado Northern Zone  
 System Datum: Mean Sea Level

SECTION DETAILS

Sec	MD	Inc	Azi	TVD	+N/-S	+E/-W	Dleg	TFace	VSec	Target
1	0.0	0.00	0.00	0.0	0.0	0.0	0.00	0.00	0.0	
2	1500.0	0.00	0.00	1500.0	0.0	0.0	0.00	0.00	0.0	
3	2059.0	13.98	45.16	2053.5	47.8	48.1	2.50	45.16	52.8	
4	3540.9	13.98	45.16	3491.5	300.2	301.9	0.00	0.00	331.6	
5	4099.9	0.00	0.00	4045.0	348.0	350.0	2.50	180.00	384.5	
6	5720.1	0.00	0.00	5665.2	348.0	350.0	0.00	0.00	384.5	
7	6782.6	85.00	87.85	6378.7	372.5	1003.3	8.00	87.85	1036.8	
8	6857.6	85.00	87.85	6385.2	375.3	1078.0	0.00	0.00	1111.3	
9	6921.3	90.10	87.85	6387.9	377.7	1141.6	8.00	0.01	1174.9	
10	10730.3	90.10	87.85	6381.3	520.5	4947.9	0.00	0.00	4975.2	Rohn LB22-62HN BHL 660'FSL, 660'FEL



WELL DETAILS: Rohn LB22-62HN

Ground Level:	4982.0	Latitude	40.729003	Longitude	-104.089019
Northing	1511531.33	Easting	3391049.13		

Plan: APD - Rev 0 (Rohn LB22-62HN/Original Drilling)

Created By: Carrie Willers Date: 17:59, August 20 2012

**OK to submit with 2A as per Noble Drilling**  
**8/21/12 3:17**