

## The Road to Excellence Starts with Safety

Sold To #: 304535	Ship To #: 2417447	Quote #:	Sales Order #: 9502083
Customer: PDC ENERGY EBUS	Customer Rep: SAILORS, CHAD		
Well Name: Bay Family Trust	Well #: 32-1	API/UWI #:	
Field: WATTENBERG	City (SAP): GALETON	County/Parish: Weld	State: Colorado
Job Purpose: Recement Service			
Well Type: Development Well	Job Type: Recement Service		
Sales Person: FLING, MATTHEW	Srvc Supervisor: FANTASIA, JOSEPH	MBU ID Emp #: 485445	

## Job Personnel

HES Emp Name	Exp Hrs	Emp #	HES Emp Name	Exp Hrs	Emp #	HES Emp Name	Exp Hrs	Emp #
BULINSKI, MATTHEW J	4.0	483865	FANTASIA, JOSEPH Brandon	4.0	485445	HINKLE, BRADLEY Dean	4.0	512123
MEADOWS, DANIEL Graham	4.0	500668						

## Equipment

HES Unit #	Distance-1 way	HES Unit #	Distance-1 way	HES Unit #	Distance-1 way	HES Unit #	Distance-1 way
11064046C	45 mile	11142998	45 mile	11360865C	45 mile	11410470C	45 mile
11566182	45 mile						

## Job Hours

Date	On Location Hours	Operating Hours	Date	On Location Hours	Operating Hours	Date	On Location Hours	Operating Hours
5-9-2012	4	4						
TOTAL			Total is the sum of each column separately					

## Job

Formation Name	Job Times		
Formation Depth (MD)	Top	Bottom	Date
Form Type		BHST	Called Out
Job depth MD	3190. ft	Job Depth TVD	On Location
Water Depth		Wk Ht Above Floor	Job Started
Perforation Depth (MD)	From	To	Job Completed
			Departed Loc

## Well Data

Description	New / Used	Max pressure psig	Size in	ID in	Weight lbm/ft	Thread	Grade	Top MD ft	Bottom MD ft	Top TVD ft	Bottom TVD ft
Open Hole				12.				449.	4000.		
Production Casing	Used		4.5	4.052	10.5		J-55		8450.		
Surface Casing	Used		8.625	8.097	24.		J-55		449.		
TUBING	Unknown		1.25	.671	3.02				3250.		

## Tools and Accessories

Type	Size	Qty	Make	Depth	Type	Size	Qty	Make	Depth	Type	Size	Qty	Make
Guide Shoe					Packer					Top Plug			
Float Shoe					Bridge Plug					Bottom Plug			
Float Collar					Retainer					SSR plug set			
Insert Float										Plug Container			
Stage Tool										Centralizers			

## Miscellaneous Materials

Gelling Agt		Conc		Surfactant		Conc		Acid Type		Qty		Conc	%
Treatment Fld		Conc		Inhibitor		Conc		Sand Type		Size		Qty	

## Fluid Data

Stage/Plug #:	1												
Fluid #	Stage Type	Fluid Name	Qty	Qty uom	Mixing Density lbm/gal	Yield ft <sup>3</sup> /sk	Mix Fluid Gal/sk	Rate bbl/min	Total Mix Fluid Gal/sk				

**HALLIBURTON****Cementing Job Summary**

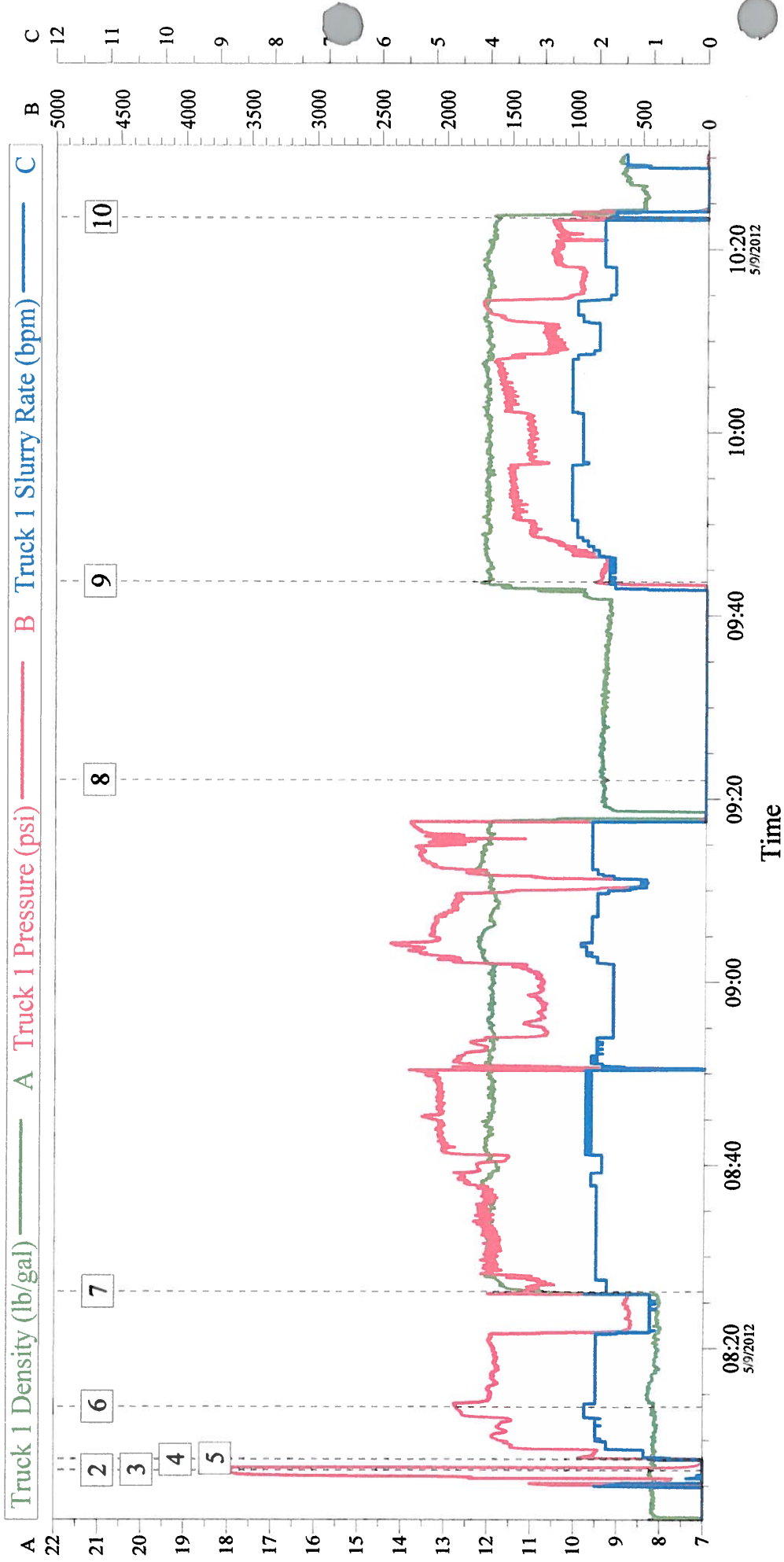
1	ClayWeb Water Spacer		10.00	bbl	8.33	.0	.0	2.0	
2	MUD FLUSH III	MUD FLUSH III - SBM (528788)	12.00	bbl	8.4	.0	.0	2.0	
3	ClayWeb Water Spacer		10.00	bbl	8.33	.0	.0	2.0	
59.525 gal/Mgal		CLA-WEB - TOTE (101985045)							
4	Varicem 12#	VARICEM (TM) CEMENT (452009)	475.0	sacks	12.	2.18	12.34	2.0	12.34
12.34 Gal		FRESH WATER							
<b>Calculated Values</b>		<b>Pressures</b>		<b>Volumes</b>					
Displacement		Shut In: Instant		Lost Returns		Cement Slurry	184	Pad	
Top Of Cement		5 Min		Cement Returns	20	Actual Displacement	2	Treatment	
Frac Gradient		15 Min		Spacers	32	Load and Breakdown		Total Job	218
<b>Rates</b>									
Circulating	2	Mixing	2	Displacement	2	Avg. Job	2		
Cement Left In Pipe	Amount	0 ft	Reason	Shoe Joint					
Frac Ring # 1 @	ID	Frac ring # 2 @	ID	Frac Ring # 3 @	ID	Frac Ring # 4 @	ID		
The Information Stated Herein Is Correct				Customer Representative Signature					

*The Road to Excellence Starts with Safety*

<b>Sold To #:</b> 304535		<b>Ship To #:</b> 2417447		<b>Quote #:</b>		<b>Sales Order #:</b> 9502083	
<b>Customer:</b> PDC ENERGY EBUS				<b>Customer Rep:</b> SAILORS, CHAD			
<b>Well Name:</b> Bay Family Trust			<b>Well #:</b> 32-1		<b>API/UWI #:</b>		
<b>Field:</b> WATTENBERG		<b>City (SAP):</b> GALETON		<b>County/Parish:</b> Weld		<b>State:</b> Colorado	
<b>Legal Description:</b>							
<b>Lat:</b>				<b>Long:</b>			
<b>Contractor:</b>			<b>Rig/Platform Name/Num:</b>				
<b>Job Purpose:</b> Recement Service						<b>Ticket Amount:</b>	
<b>Well Type:</b> Development Well			<b>Job Type:</b> Recement Service				
<b>Sales Person:</b> FLING, MATTHEW			<b>Srvc Supervisor:</b> FANTASIA, JOSEPH			<b>MBU ID Emp #:</b> 485445	

Activity Description	Date/Time	Cht #	Rate bbl/ min	Volume bbl		Pressure psig		Comments
				Stage	Total	Tubing	Casing	
Arrive at Location from Service Center	05/09/2012 07:30							
Assessment Of Location Safety Meeting	05/09/2012 07:40							
Start Job	05/09/2012 07:55							
Test Lines	05/09/2012 08:00							PRESSURE TEST LINESTO 3500 PSI
Pump Spacer 1	05/09/2012 08:08		2	10			1820. 0	10 BBLs SUPPLIED WATER WITH CLAY WEB ADDED
Pump Spacer 2	05/09/2012 08:13		2	12			1855. 0	12 BBLs MUDFLUSH
Pump Spacer 1	05/09/2012 08:18		2	10			1920. 0	10 BBLs SUPPLIED WATER WITH CLAYWEB ADDED
Pump Displacement	05/09/2012 08:20		2	1.5			2120. 0	DISPLACE 1.5 BBLs
Pump Cement	05/09/2012 08:25		2	92			2030. 0	237 SKS VARICEM MIXED AT 12 PPG USING SUPPLIED WATER
Shutdown	05/09/2012 09:22							RIG PULLS 47 JOINTS
Pump Cement	05/09/2012 09:43		2	92			1502. 0	237 SKS VARICEM MIXED AT 12 PPG USING SUPPLIED WATER. CEMENT TO SURFACE AT 70 BBLs INTO CEMENT. APPROX 20 BLS BACK.
Pump Displacement	05/09/2012 10:23		2	1				DISPLACE 1 BBL
End Job	05/09/2012 10:45							

PDC BAY FAMILY TRUST 32-1 RECEMENT



Global Event Log				
1 Starting Job	07:48:50	2 Start Job	08:06:40	3 Test Lines 08:06:45
4 Clay Web Water Spacer	08:07:51	5 Mudflush	08:07:58	6 Clay Web Water Spacer 08:13:39
7 Pump Cement	08:26:13	8 Shutdown	09:22:04	9 Pump Cement 09:43:43
10 Displace	10:23:25			

Customer: PDC	Job Date: 09-May-2012	Sales Order #: 9502083
Well Description: RECEMENT	UWI:	