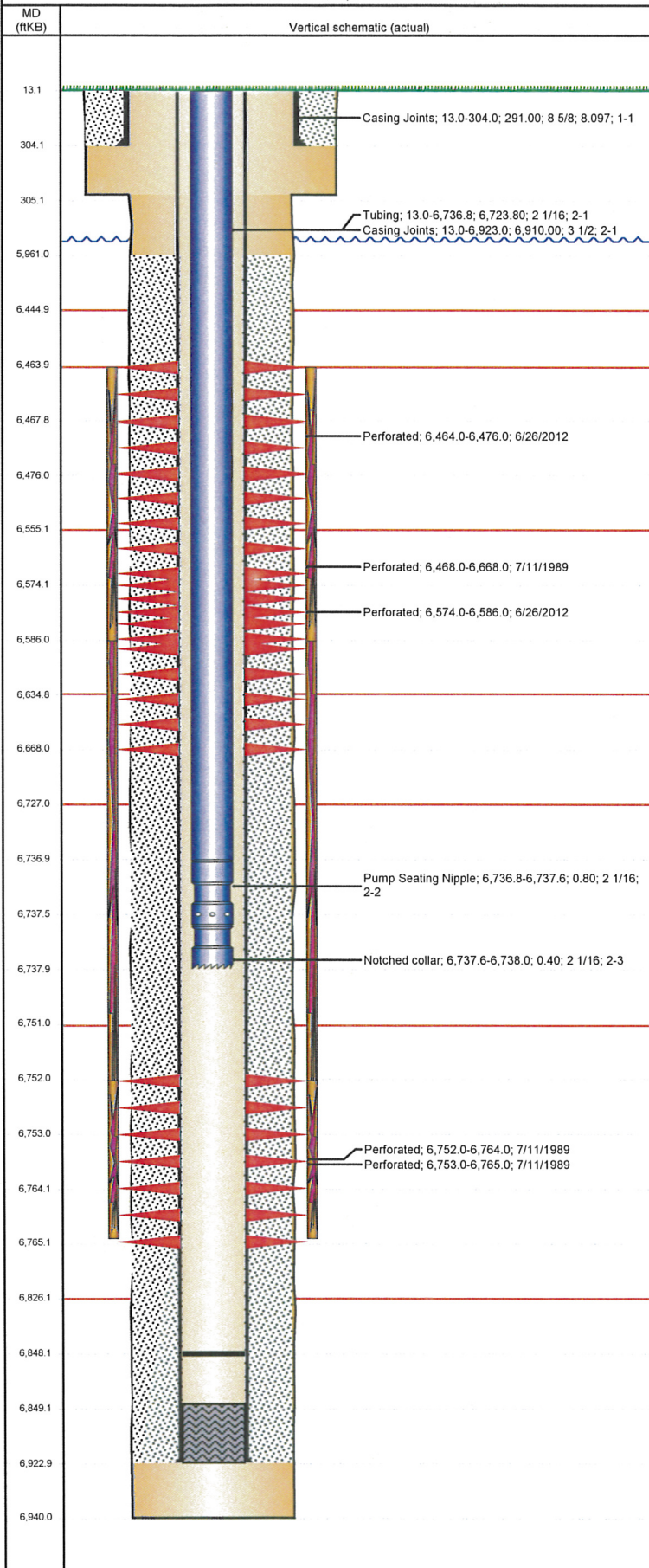


Frac Wellbore Schematic Report

Well Name: LUCCI BCB 01-13

VERTICAL - ORIGINAL HOLE, 10/23/2012 1:15:16 PM



Well Header

API 05-123-14276	Business Unit WATTENBERG	District 15	Well Config VERTICAL
Original KB Elevation (ft) 4,623.00	KB - GL / MSL (ftKB) 13.00	Spud Date 5/23/1989	P & A Date

Comment
7/03 Frac'd into Trebor B12-4

Directions To Well

Current PBTD (ftKB)
ORIGINAL HOLE - 6,848.0

Surface Location (Congressional)

Quarter 1	Quarter 2	Quarter 3	Quarter 4	Section	Township	Twship N...	Range	Rng E/W Dir
		SW	SW	1	5	N	64	W

Bottom Hole Location

North-South Distance (ft)	From N or S Line	East-West Distance (ft)	From E or W Line

Plug Back Total Depths

Date	Depth (ftKB)	Method	Com
5/28/1989	6,849.0	TAG	CEMENT PLUG
8/9/2012	6,848.0	TAG	TAGGED FILL @6848

Wellbore Sections

Section Des	Size (in)	Act Top (ftKB)	Act Btm (ftKB)
SURFACE	12 1/4	13.0	305.0
PRODUCTION	7 7/8	305.0	6,940.0

Zone Statuses

Zone Name	Status Date	Status	Job
NIOBRARA	7/27/1989	PR	DRILLING/COMPLETION - ORIGINAL, 5/23/1989 00:00
NIOBRARA	8/15/2012	PR	RE-FRAC, 6/21/2012 06:00
CODELL	7/27/1989	PR	DRILLING/COMPLETION - ORIGINAL, 5/23/1989 00:00
CODELL	8/5/2003	PR	RE-FRAC, 7/23/2003 00:00

Casing Strings

Csg Des	Run Date	OD (in)	Wt/Len (lb/ft)	Grade	Top (ftKB)	Set Depth (ftKB)
Surface Casing	5/24/1989	8 5/8	24.00		13.0	304.0
Production	5/28/1989	3 1/2	9.30	N-80	13.0	6,923.0

Cement

Des	Top (ftKB)	Btm (ftKB)
Surface Casing Cement	13.0	304.0
Production Casing Cement	5,961.0	6,923.0

Tubing Components

Item Des	OD (in)	Wt (lb/ft)	Grade	Jts	Len (ft)
Tubing	2 1/16	3.25	J-55	207	6,723.80
Pump Seating Nipple	2 1/16	1.10		1	0.80
Notched collar	2 1/16			1	0.40

Perforation Data

Zone	Bnch/St g	Entered Shot Total	Top (ftKB)	Btm (ftKB)	Date
NIOBRARA, ORIGINAL HOLE		48	6,464.0	6,476.0	6/26/2012
NIOBRARA, ORIGINAL HOLE		9	6,468.0	6,668.0	7/11/1989
NIOBRARA, ORIGINAL HOLE		48	6,574.0	6,586.0	6/26/2012
CODELL, ORIGINAL HOLE		9	6,752.0	6,764.0	7/11/1989
CODELL, ORIGINAL HOLE		48	6,753.0	6,765.0	7/11/1989

Stimulations & Treatments

Bnch/St g	Date	Zone	Primary Job Type
	7/13/1989	NIOBRARA-CODELL, ORIGINAL HOLE	DRILLING/COMPLETION - ORIGINAL

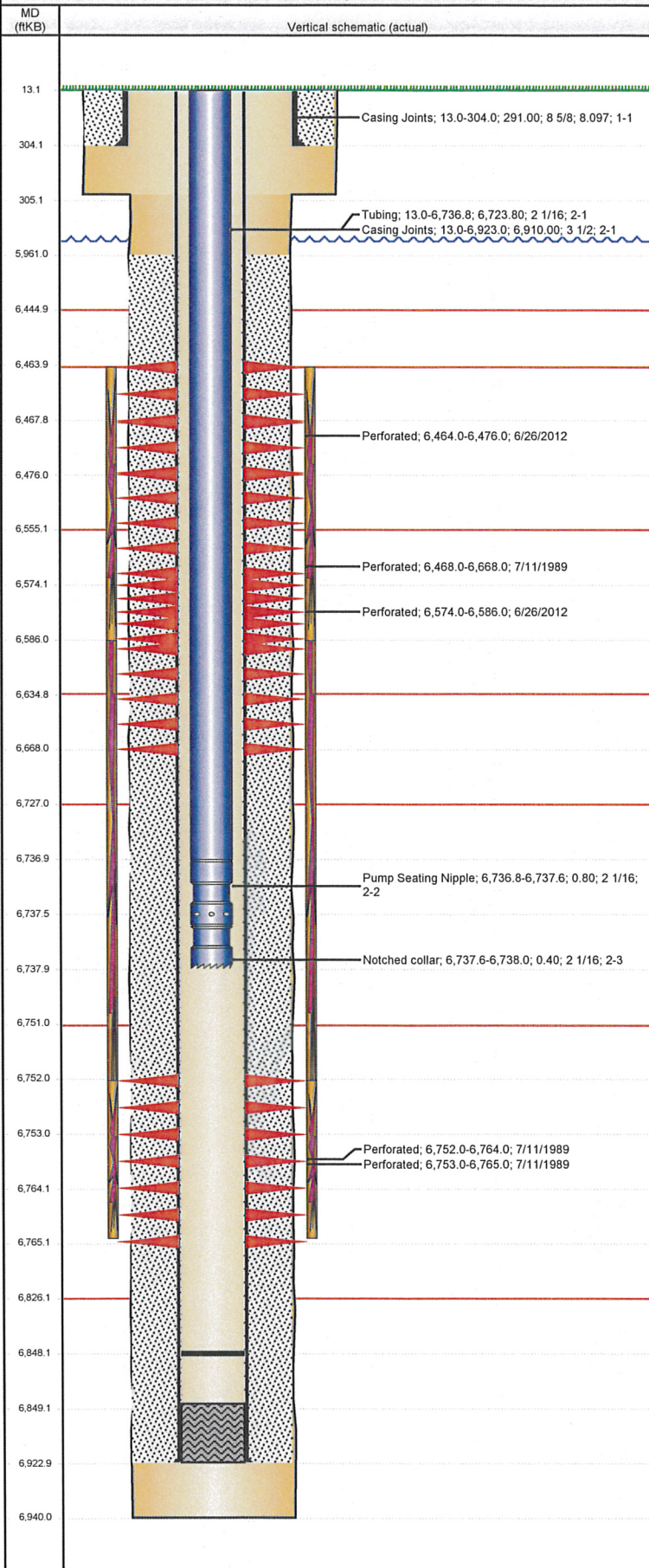
Comment

LIMITED ENTRY

Total Add Amount	Total Clean Volume...	Vol Slurry Tot (gal)	Vol Gas Tot (MCF)
Proppant 205000 lb		68292.00	
Avg Treat Pressure (psi)	Max Treat Pressure (psi)	Avg Treat Rate (bbl/min)	Max Treat Rate (bbl/min)
4,900.0	5,950.0	22.00	22.50

Well Name: LUCCI BCB 01-13

VERTICAL - ORIGINAL HOLE, 10/23/2012 1:15:16 PM



Stimulations & Treatments					
Bnch/Stg	Date	Zone	Primary Job Type		
	7/29/2003	CODELL, ORIGINAL HOLE	RE-FRAC		
Comment					
Cdl refrac 7/03 dwn tbg w/pkr,comm w/Nio					
Total Add Amount		Total Clean Volume...	Vol Slurry Tot (gal)	Vol Gas Tot (MCF)	
Proppant Ottawa 245160 lb		5491332.07	130746.00		
Avg Treat Pressure (psi)	Max Treat Pressure (psi)	Avg Treat Rate (bbl/min)	Max Treat Rate (bbl/min)		
7,350.0	7,901.0	12.70	14.40		
Bnch/Stg	Date	Zone	Primary Job Type		
	7/26/2012	NIOBRARA, ORIGINAL HOLE	RE-FRAC		
Comment					
Total Add Amount		Total Clean Volume...	Vol Slurry Tot (gal)	Vol Gas Tot (MCF)	
Ottawa 245445.8 lb		149668.68	160794.06		
Avg Treat Pressure (psi)	Max Treat Pressure (psi)	Avg Treat Rate (bbl/min)	Max Treat Rate (bbl/min)		
5,679.0	6,294.0	30.00	31.40		
Other In Hole					
Run Date	Des		OD (in)	Top (ftKB)	Btm (ftKB)
Logs					
Date	Type		Top (ftKB)	Btm (ftKB)	
5/28/1989	COMPENSATED DENSITY		4,100.0	6,937.0	
5/31/1989	CBL/CCL/GR		5,900.0	6,834.0	
7/19/2011	GYRO		10.0	6,700.0	