

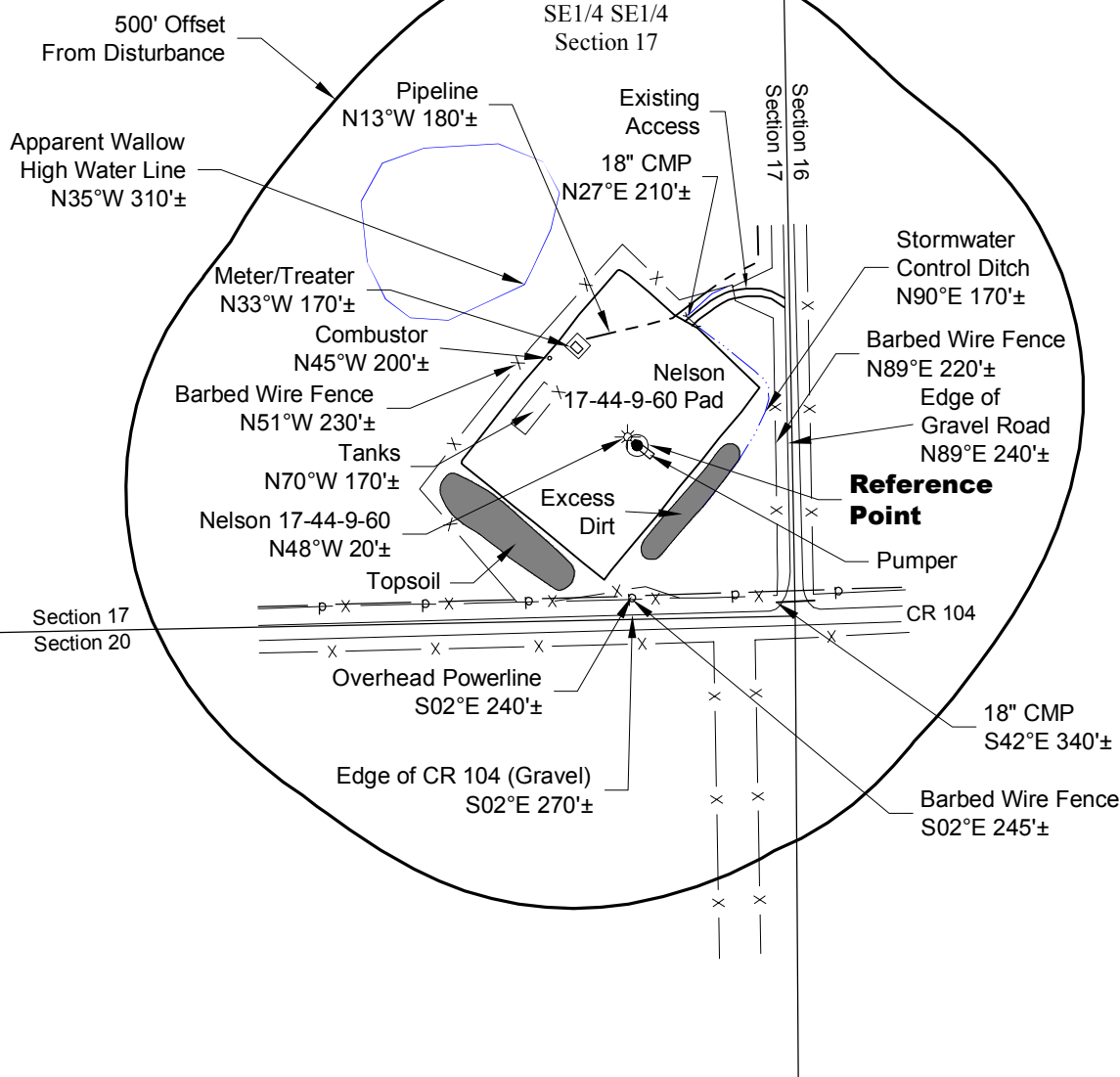
LOCATION DRAWING

VEGETATION:
DRY LAND PASTURE

SURFACE USE:
GRAZING

REFERENCE POINT

LATITUDE: 40.74302
LONGITUDE: -104.10813
FOOTAGE: 279 FSL 248 FEL
GROUND ELEVATION: 5007.3
PDOP: 2.2 DATE: 10/18/2012
INSTRUMENT OPERATOR: MARC WOODARD



North

0 300 600

Graphic Scale in Feet
1" = 300'

DISTURBANCE ACREAGE:
3.7± DRILLING OPERATIONS
1.0± INTERIM RECLAIM

10/23/12



LAND SURVEYING AND MAPPING
LAFAYETTE - WINTER PARK
Ph 303 666 0379 Fx 303 665 6320

CARRIZO OIL & GAS, INC
NELSON 17-44-9-60 PAD

SE1/4 SE1/4 SEC. 17 T9N R60W
6th PM WELD COUNTY COLORADO