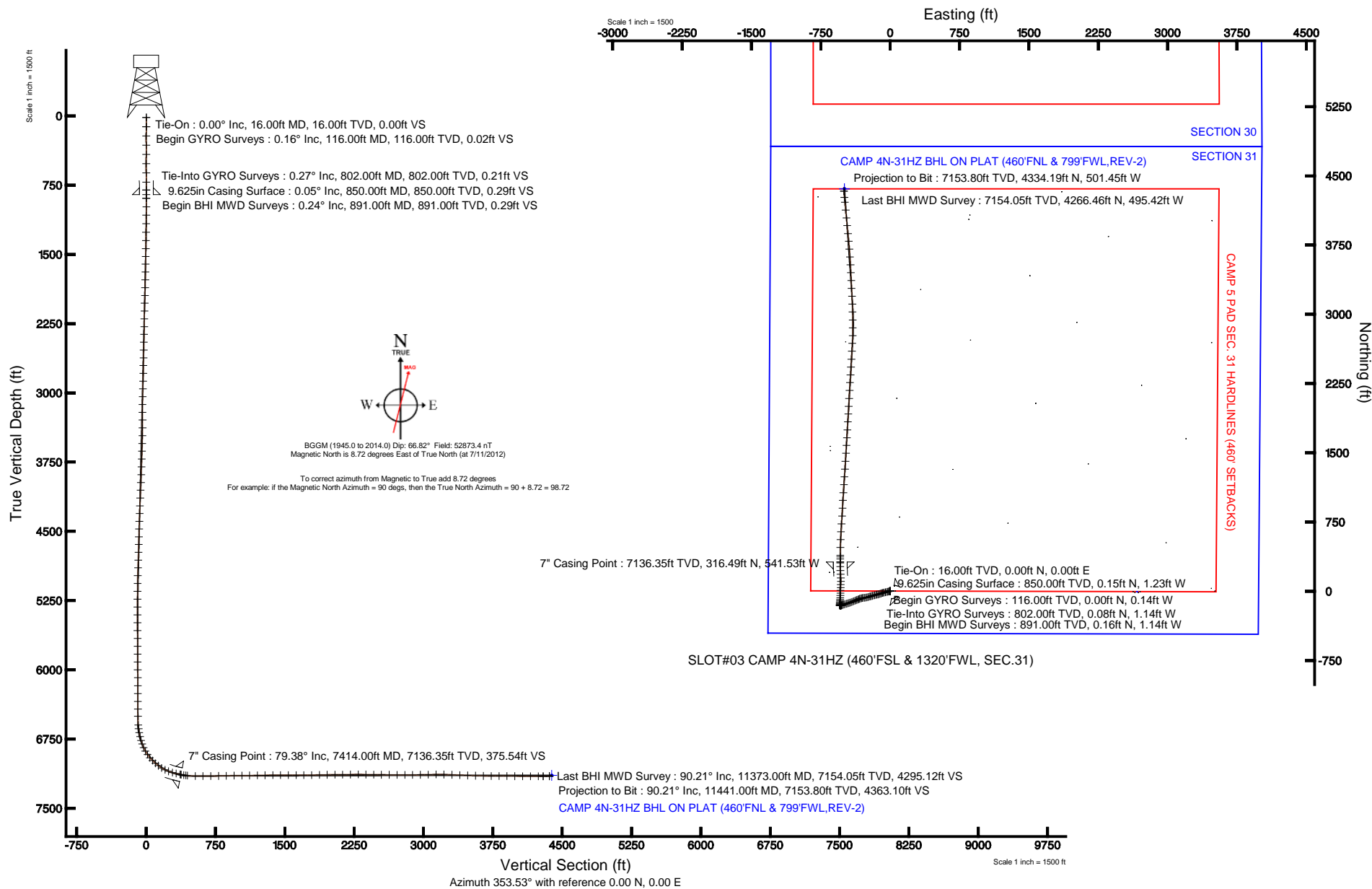


# KERR-MCGEE OIL & GAS ONSHORE LP

Location: COLORADO Slot: SLOT#03 CAMP 4N-31HZ (460'FSL & 1320'FWL, SEC.31)  
 Field: WELD COUNTY (KERR MCGEE) Well: CAMP 4N-31HZ  
 Facility: SEC.31-T3N-R65W Wellbore: CAMP 4N-31HZ PWB

Plot reference wellpath is CAMP 4N-31HZ (REV-E.0) PWP

True vertical depths are referenced to XTREME 20 (RKB)	Grid System: NAD83 / Lambert Colorado SP, Northern Zone (501), US feet
Measured depths are referenced to XTREME 20 (RKB)	North Reference: True north
XTREME 20 (RKB) to Mean Sea Level: 4985 feet	Scale: True distance
Mean Sea Level to Mud line (At Slot: SLOT#03 CAMP 4N-31HZ (460'FSL & 1320'FWL, SEC.31)): 0 feet	Depths are in feet
Coordinates are in feet referenced to Slot	Created by: wilsje02 on 8/2/2012





# Actual Wellpath Report

CAMP 4N-31HZ AWP

Page 1 of 7



REFERENCE WELLPATH IDENTIFICATION			
Operator	KERR-MCGEE OIL & GAS ONSHORE LP	Slot	SLOT#03 CAMP 4N-31HZ (460'FSL & 1320'FWL, SEC.31)
Area	COLORADO	Well	CAMP 4N-31HZ
Field	WELD COUNTY (KERR MCGEE)	Wellbore	CAMP 4N-31HZ AWB
Facility	SEC.31-T3N-R65W		

REPORT SETUP INFORMATION			
Projection System	NAD83 / Lambert Colorado SP, Northern Zone (501), US feet	Software System	WellArchitect@ 3.0.2
North Reference	True	User	Wilsjef02
Scale	0.999958	Report Generated	8/2/2012 at 12:12:28
Convergence at slot	0.51° East	Database/Source file	WellArchitectDB/CAMP_4N-31HZ_AWB.xml

WELLPATH LOCATION						
	Local coordinates		Grid coordinates		Geographic coordinates	
	North[ft]	East[ft]	Easting[US ft]	Northing[US ft]	Latitude	Longitude
Slot Location	-0.04	56.17	3220436.09	1307926.02	40°10'33.460"N	104°42'40.010"W
Facility Reference Pt			3220379.93	1307925.56	40°10'33.460"N	104°42'40.734"W
Field Reference Pt			3197771.84	1268891.29	40°04'09.600"N	104°47'36.000"W

WELLPATH DATUM			
Calculation method	Minimum curvature	XTREME 20 (RKB) to Facility Vertical Datum	4985.00ft
Horizontal Reference Pt	Slot	XTREME 20 (RKB) to Mean Sea Level	4985.00ft
Vertical Reference Pt	XTREME 20 (RKB)	XTREME 20 (RKB) to Mud Line at Slot (SLOT#03 CAMP 4N-31HZ (460'FSL & 1320'FWL, SEC.31))	4985.00ft
MD Reference Pt	XTREME 20 (RKB)	Section Origin	N 0.00, E 0.00 ft
Field Vertical Reference	Mean Sea Level	Section Azimuth	353.53°



# Actual Wellpath Report

CAMP 4N-31HZ AWP

Page 2 of 7



REFERENCE WELLPATH IDENTIFICATION			
Operator	KERR-MCGEE OIL & GAS ONSHORE LP	Slot	SLOT#03 CAMP 4N-31HZ (460'FSL & 1320'FWL, SEC.31)
Area	COLORADO	Well	CAMP 4N-31HZ
Field	WELD COUNTY (KERR MCGEE)	Wellbore	CAMP 4N-31HZ AWB
Facility	SEC.31-T3N-R65W		

WELLPATH DATA (147 stations) † = interpolated/extrapolated station										
MD [ft]	Inclination [°]	Azimuth [°]	TVD [ft]	Vert Sect [ft]	North [ft]	East [ft]	Latitude	Longitude	DLS [°/100ft]	Comments
0.00†	0.000	271.290	0.00	0.00	0.00	0.00	40°10'33.460"N	104°42'40.010"W	0.00	
16.00	0.000	271.290	16.00	0.00	0.00	0.00	40°10'33.460"N	104°42'40.010"W	0.00	Tie-On
116.00	0.160	271.290	116.00	0.02	0.00	-0.14	40°10'33.460"N	104°42'40.012"W	0.16	Begin GYRO Surveys
216.00	0.270	240.110	216.00	-0.06	-0.11	-0.48	40°10'33.459"N	104°42'40.017"W	0.16	
316.00	0.290	316.490	316.00	0.05	-0.05	-0.86	40°10'33.459"N	104°42'40.022"W	0.35	
416.00	0.220	154.090	416.00	0.07	-0.03	-0.95	40°10'33.459"N	104°42'40.023"W	0.50	
516.00	0.050	32.410	516.00	-0.07	-0.17	-0.85	40°10'33.458"N	104°42'40.021"W	0.25	
616.00	0.030	347.490	616.00	-0.01	-0.11	-0.83	40°10'33.459"N	104°42'40.021"W	0.04	
716.00	0.090	296.790	716.00	0.06	-0.05	-0.90	40°10'33.459"N	104°42'40.022"W	0.07	
802.00	0.270	297.950	802.00	0.21	0.08	-1.14	40°10'33.460"N	104°42'40.025"W	0.21	Tie-Into GYRO Surveys
891.00	0.240	94.850	891.00	0.29	0.16	-1.14	40°10'33.461"N	104°42'40.025"W	0.56	Begin BHI MWD Surveys
983.00	1.340	267.550	982.99	0.33	0.10	-2.02	40°10'33.461"N	104°42'40.036"W	1.72	
1075.00	2.770	250.800	1074.93	-0.09	-0.68	-5.20	40°10'33.453"N	104°42'40.077"W	1.67	
1167.00	4.840	253.110	1166.72	-1.28	-2.54	-11.01	40°10'33.435"N	104°42'40.152"W	2.26	
1259.00	5.880	254.690	1258.32	-2.70	-4.91	-19.27	40°10'33.411"N	104°42'40.259"W	1.14	
1351.00	6.800	260.250	1349.75	-3.74	-7.08	-29.19	40°10'33.390"N	104°42'40.386"W	1.20	
1439.00	7.680	257.090	1437.05	-4.70	-9.27	-40.05	40°10'33.368"N	104°42'40.526"W	1.10	
1524.00	8.450	257.320	1521.21	-6.01	-11.91	-51.68	40°10'33.342"N	104°42'40.676"W	0.91	
1609.00	7.210	254.870	1605.42	-7.49	-14.67	-62.92	40°10'33.315"N	104°42'40.821"W	1.51	
1694.00	7.160	259.000	1689.75	-8.71	-17.08	-73.27	40°10'33.291"N	104°42'40.954"W	0.61	
1779.00	6.780	252.130	1774.12	-10.12	-19.63	-83.25	40°10'33.266"N	104°42'41.083"W	1.08	
1865.00	6.470	250.460	1859.55	-12.21	-22.81	-92.65	40°10'33.234"N	104°42'41.204"W	0.42	
1950.00	6.830	248.850	1943.98	-14.58	-26.23	-101.87	40°10'33.200"N	104°42'41.323"W	0.48	
2035.00	7.760	248.830	2028.29	-17.31	-30.13	-111.94	40°10'33.162"N	104°42'41.452"W	1.09	
2120.00	7.420	255.140	2112.55	-19.57	-33.61	-122.59	40°10'33.127"N	104°42'41.590"W	1.06	
2205.00	8.010	260.000	2196.78	-20.73	-36.04	-133.73	40°10'33.103"N	104°42'41.733"W	1.03	
2291.00	8.100	258.220	2281.93	-21.66	-38.32	-145.56	40°10'33.081"N	104°42'41.886"W	0.31	
2376.00	7.900	252.270	2366.10	-23.36	-41.32	-156.99	40°10'33.051"N	104°42'42.033"W	1.00	
2461.00	8.740	255.140	2450.21	-25.44	-44.76	-168.80	40°10'33.017"N	104°42'42.185"W	1.10	
2547.00	8.420	255.330	2535.24	-27.29	-48.03	-181.20	40°10'32.985"N	104°42'42.345"W	0.37	
2632.00	7.640	256.690	2619.41	-28.85	-50.91	-192.72	40°10'32.957"N	104°42'42.493"W	0.94	
2717.00	7.510	253.950	2703.67	-30.44	-53.74	-203.56	40°10'32.929"N	104°42'42.633"W	0.45	
2803.00	8.070	256.290	2788.88	-32.14	-56.73	-214.82	40°10'32.899"N	104°42'42.778"W	0.75	
2887.00	8.660	251.250	2871.98	-34.23	-60.16	-226.54	40°10'32.865"N	104°42'42.929"W	1.12	
2973.00	8.840	253.300	2956.98	-36.78	-64.14	-239.00	40°10'32.826"N	104°42'43.089"W	0.42	
3058.00	8.940	254.200	3040.96	-39.01	-67.81	-251.61	40°10'32.789"N	104°42'43.252"W	0.20	
3143.00	8.100	260.600	3125.02	-40.38	-70.59	-263.88	40°10'32.762"N	104°42'43.410"W	1.49	
3229.00	7.620	265.060	3210.22	-40.54	-72.07	-275.53	40°10'32.747"N	104°42'43.560"W	0.90	
3314.00	8.640	264.860	3294.36	-40.24	-73.13	-287.51	40°10'32.737"N	104°42'43.714"W	1.20	
3399.00	7.780	261.720	3378.49	-40.27	-74.53	-299.56	40°10'32.723"N	104°42'43.870"W	1.14	
3485.00	7.190	252.800	3463.76	-41.46	-76.96	-310.46	40°10'32.699"N	104°42'44.010"W	1.51	
3570.00	7.060	252.230	3548.10	-43.47	-80.12	-320.52	40°10'32.668"N	104°42'44.140"W	0.17	
3655.00	7.200	250.810	3632.45	-45.66	-83.47	-330.52	40°10'32.635"N	104°42'44.268"W	0.26	
3740.00	6.910	245.380	3716.80	-48.43	-87.35	-340.20	40°10'32.596"N	104°42'44.393"W	0.86	
3826.00	7.040	246.020	3802.17	-51.63	-91.65	-349.72	40°10'32.554"N	104°42'44.516"W	0.18	



# Actual Wellpath Report

CAMP 4N-31HZ AWP

Page 3 of 7



## REFERENCE WELLPATH IDENTIFICATION

Operator	KERR-MCGEE OIL & GAS ONSHORE LP	Slot	SLOT#03 CAMP 4N-31HZ (460'FSL & 1320'FWL, SEC.31)
Area	COLORADO	Well	CAMP 4N-31HZ
Field	WELD COUNTY (KERR MCGEE)	Wellbore	CAMP 4N-31HZ AWB
Facility	SEC.31-T3N-R65W		

## WELLPATH DATA (147 stations)

MD [ft]	Inclination [°]	Azimuth [°]	TVD [ft]	Vert Sect [ft]	North [ft]	East [ft]	Latitude	Longitude	DLS [°/100ft]	Comments
3911.00	7.930	251.610	3886.44	-54.40	-95.61	-360.04	40°10'32.515"N	104°42'44.649"W	1.35	
3996.00	8.060	248.330	3970.62	-57.18	-99.66	-371.15	40°10'32.475"N	104°42'44.792"W	0.56	
4081.00	9.630	247.360	4054.60	-60.72	-104.60	-383.25	40°10'32.426"N	104°42'44.948"W	1.86	
4166.00	9.550	247.060	4138.42	-64.70	-110.09	-396.30	40°10'32.372"N	104°42'45.116"W	0.11	
4252.00	9.020	247.550	4223.29	-68.57	-115.44	-409.10	40°10'32.319"N	104°42'45.281"W	0.62	
4337.00	8.330	250.460	4307.32	-71.80	-120.05	-421.06	40°10'32.273"N	104°42'45.435"W	0.96	
4422.00	8.390	248.750	4391.41	-74.77	-124.35	-432.65	40°10'32.231"N	104°42'45.584"W	0.30	
4507.00	9.440	253.470	4475.39	-77.57	-128.58	-445.11	40°10'32.189"N	104°42'45.745"W	1.50	
4592.00	8.510	253.440	4559.34	-79.89	-132.36	-457.82	40°10'32.152"N	104°42'45.908"W	1.09	
4677.00	8.980	254.160	4643.36	-82.07	-135.96	-470.23	40°10'32.116"N	104°42'46.068"W	0.57	
4763.00	9.570	254.070	4728.23	-84.34	-139.76	-483.56	40°10'32.078"N	104°42'46.240"W	0.69	
4848.00	9.560	252.400	4812.05	-86.86	-143.83	-497.08	40°10'32.038"N	104°42'46.414"W	0.33	
4933.00	7.350	248.950	4896.12	-89.59	-147.92	-508.89	40°10'31.998"N	104°42'46.566"W	2.67	
5018.00	5.750	247.220	4980.56	-92.15	-151.52	-517.89	40°10'31.962"N	104°42'46.682"W	1.90	
5103.00	3.690	249.920	5065.27	-93.99	-154.11	-524.38	40°10'31.937"N	104°42'46.766"W	2.44	
5188.00	3.060	260.660	5150.12	-94.75	-155.42	-529.19	40°10'31.924"N	104°42'46.828"W	1.05	
5273.00	2.150	257.270	5235.04	-95.04	-156.14	-532.98	40°10'31.917"N	104°42'46.877"W	1.09	
5359.00	1.710	263.630	5320.99	-95.21	-156.63	-535.83	40°10'31.912"N	104°42'46.913"W	0.57	
5444.00	1.310	266.590	5405.96	-95.16	-156.83	-538.06	40°10'31.910"N	104°42'46.942"W	0.48	
5529.00	0.840	260.100	5490.94	-95.14	-157.00	-539.65	40°10'31.908"N	104°42'46.963"W	0.57	
5614.00	0.890	277.460	5575.93	-95.02	-157.02	-540.92	40°10'31.908"N	104°42'46.979"W	0.31	
5699.00	0.890	296.550	5660.92	-94.50	-156.64	-542.16	40°10'31.912"N	104°42'46.995"W	0.35	
5785.00	0.640	294.010	5746.91	-93.89	-156.14	-543.20	40°10'31.917"N	104°42'47.008"W	0.29	
5870.00	0.440	296.160	5831.91	-93.48	-155.81	-543.92	40°10'31.920"N	104°42'47.018"W	0.24	
5955.00	0.270	325.680	5916.91	-93.12	-155.50	-544.33	40°10'31.923"N	104°42'47.023"W	0.29	
6040.00	0.470	347.920	6001.91	-92.60	-154.99	-544.52	40°10'31.928"N	104°42'47.025"W	0.29	
6125.00	0.680	0.240	6086.90	-91.75	-154.14	-544.59	40°10'31.936"N	104°42'47.026"W	0.29	
6211.00	0.680	356.130	6172.90	-90.73	-153.13	-544.62	40°10'31.946"N	104°42'47.027"W	0.06	
6296.00	0.320	219.790	6257.89	-90.39	-152.80	-544.80	40°10'31.950"N	104°42'47.029"W	1.10	
6381.00	0.170	353.670	6342.89	-90.43	-152.86	-544.97	40°10'31.949"N	104°42'47.031"W	0.53	
6466.00	0.180	22.970	6427.89	-90.19	-152.61	-544.93	40°10'31.951"N	104°42'47.031"W	0.10	
6543.00	0.400	310.670	6504.89	-89.89	-152.33	-545.09	40°10'31.954"N	104°42'47.033"W	0.50	
6637.00	4.030	355.340	6598.81	-86.34	-148.82	-545.61	40°10'31.989"N	104°42'47.039"W	4.00	
6679.00	7.330	357.410	6640.60	-82.19	-144.67	-545.85	40°10'32.030"N	104°42'47.042"W	7.87	
6722.00	10.990	1.400	6683.04	-75.40	-137.83	-545.87	40°10'32.097"N	104°42'47.043"W	8.63	
6764.00	12.870	6.970	6724.13	-66.88	-129.18	-545.21	40°10'32.183"N	104°42'47.034"W	5.24	
6807.00	15.510	5.430	6765.82	-56.59	-118.71	-544.08	40°10'32.286"N	104°42'47.020"W	6.20	
6849.00	19.760	5.130	6805.84	-44.14	-106.04	-542.91	40°10'32.412"N	104°42'47.005"W	10.12	
6892.00	23.860	4.260	6845.75	-28.47	-90.12	-541.62	40°10'32.569"N	104°42'46.988"W	9.56	
6934.00	29.730	3.170	6883.22	-9.84	-71.23	-540.41	40°10'32.756"N	104°42'46.972"W	14.02	
6978.00	34.700	2.280	6920.44	13.31	-47.81	-539.31	40°10'32.987"N	104°42'46.958"W	11.35	
7020.00	40.880	1.610	6953.61	38.76	-22.10	-538.44	40°10'33.241"N	104°42'46.947"W	14.75	
7063.00	44.290	1.650	6985.27	67.56	6.98	-537.62	40°10'33.529"N	104°42'46.936"W	7.93	
7105.00	49.570	2.470	7013.94	97.89	37.63	-536.50	40°10'33.831"N	104°42'46.922"W	12.65	
7148.00	52.830	3.270	7040.88	130.95	71.09	-534.82	40°10'34.162"N	104°42'46.900"W	7.72	



# Actual Wellpath Report

CAMP 4N-31HZ AWP

Page 4 of 7



## REFERENCE WELLPATH IDENTIFICATION

Operator	KERR-MCGEE OIL & GAS ONSHORE LP	Slot	SLOT#03 CAMP 4N-31HZ (460'FSL & 1320'FWL, SEC.31)
Area	COLORADO	Well	CAMP 4N-31HZ
Field	WELD COUNTY (KERR MCGEE)	Wellbore	CAMP 4N-31HZ AWB
Facility	SEC.31-T3N-R65W		

## WELLPATH DATA (147 stations) † = interpolated/extrapolated station

MD [ft]	Inclination [°]	Azimuth [°]	TVD [ft]	Vert Sect [ft]	North [ft]	East [ft]	Latitude	Longitude	DLS [°/100ft]	Comments
7190.00	59.280	0.590	7064.32	165.40	105.89	-533.68	40°10'34.506"N	104°42'46.886"W	16.24	
7233.00	63.750	357.000	7084.83	203.02	143.66	-534.50	40°10'34.879"N	104°42'46.896"W	12.72	
7275.00	70.560	356.330	7101.13	241.64	182.28	-536.76	40°10'35.261"N	104°42'46.925"W	16.28	
7319.00	74.010	357.070	7114.52	283.49	224.12	-539.16	40°10'35.674"N	104°42'46.956"W	8.00	
7361.00	76.380	358.190	7125.25	323.98	264.68	-540.84	40°10'36.075"N	104°42'46.978"W	6.20	
7404.00	78.870	359.930	7134.46	365.78	306.67	-541.53	40°10'36.490"N	104°42'46.987"W	7.01	
7414.00†	79.382	0.100	7136.35	375.54	316.49	-541.53	40°10'36.587"N	104°42'46.987"W	5.38	7" Casing Point
7446.00	81.020	0.640	7141.80	406.85	348.02	-541.32	40°10'36.899"N	104°42'46.984"W	5.38	
7469.00	82.260	1.260	7145.14	429.41	370.78	-540.94	40°10'37.124"N	104°42'46.979"W	6.01	
7486.00	84.160	0.470	7147.15	446.15	387.65	-540.69	40°10'37.290"N	104°42'46.976"W	12.09	
7571.00	88.430	1.130	7152.64	530.27	472.45	-539.50	40°10'38.128"N	104°42'46.961"W	5.08	
7656.00	90.830	2.500	7153.19	614.37	557.40	-536.81	40°10'38.968"N	104°42'46.926"W	3.25	
7741.00	90.490	3.580	7152.21	698.20	642.27	-532.30	40°10'39.806"N	104°42'46.868"W	1.33	
7827.00	90.890	3.640	7151.17	782.86	728.09	-526.89	40°10'40.655"N	104°42'46.798"W	0.47	
7912.00	91.250	3.950	7149.59	866.49	812.89	-521.26	40°10'41.493"N	104°42'46.726"W	0.56	
7997.00	91.100	2.610	7147.84	950.24	897.73	-516.40	40°10'42.331"N	104°42'46.663"W	1.59	
8082.00	90.240	3.260	7146.85	1034.09	982.61	-512.05	40°10'43.170"N	104°42'46.607"W	1.27	
8167.00	90.300	3.740	7146.45	1117.80	1067.45	-506.86	40°10'44.008"N	104°42'46.540"W	0.57	
8253.00	90.860	3.930	7145.58	1202.41	1153.26	-501.11	40°10'44.856"N	104°42'46.466"W	0.69	
8338.00	91.320	4.130	7143.96	1285.97	1238.03	-495.14	40°10'45.694"N	104°42'46.389"W	0.59	
8423.00	90.490	3.670	7142.62	1369.57	1322.82	-489.36	40°10'46.532"N	104°42'46.315"W	1.12	
8508.00	89.810	3.370	7142.40	1453.28	1407.66	-484.14	40°10'47.370"N	104°42'46.248"W	0.87	
8594.00	89.930	3.560	7142.59	1537.99	1493.50	-478.94	40°10'48.218"N	104°42'46.181"W	0.26	
8679.00	89.870	3.710	7142.74	1621.67	1578.33	-473.55	40°10'49.057"N	104°42'46.111"W	0.19	
8764.00	90.430	3.070	7142.52	1705.41	1663.18	-468.53	40°10'49.895"N	104°42'46.047"W	1.00	
8849.00	90.610	3.280	7141.75	1789.20	1748.05	-463.82	40°10'50.734"N	104°42'45.986"W	0.33	
8935.00	90.940	3.220	7140.58	1873.96	1833.90	-458.94	40°10'51.582"N	104°42'45.923"W	0.39	
9020.00	91.230	3.480	7138.97	1957.70	1918.74	-453.98	40°10'52.421"N	104°42'45.859"W	0.46	
9105.00	90.240	3.060	7137.88	2041.46	2003.59	-449.13	40°10'53.259"N	104°42'45.797"W	1.27	
9190.00	90.460	3.100	7137.36	2125.28	2088.47	-444.56	40°10'54.098"N	104°42'45.738"W	0.26	
9276.00	90.860	3.310	7136.37	2210.05	2174.33	-439.75	40°10'54.946"N	104°42'45.676"W	0.53	
9361.00	89.980	3.350	7135.75	2293.81	2259.18	-434.82	40°10'55.785"N	104°42'45.613"W	1.04	
9446.00	88.980	3.480	7136.52	2377.54	2344.03	-429.75	40°10'56.623"N	104°42'45.547"W	1.19	
9531.00	89.410	3.260	7137.72	2461.28	2428.87	-424.76	40°10'57.462"N	104°42'45.483"W	0.57	
9616.00	89.690	3.550	7138.38	2545.01	2513.72	-419.71	40°10'58.300"N	104°42'45.418"W	0.47	
9702.00	89.660	3.180	7138.87	2629.75	2599.57	-414.66	40°10'59.149"N	104°42'45.353"W	0.43	
9787.00	89.470	3.360	7139.52	2713.52	2684.43	-409.81	40°10'59.987"N	104°42'45.290"W	0.31	
9872.00	89.690	1.330	7140.14	2797.51	2769.35	-406.34	40°11'00.826"N	104°42'45.246"W	2.40	
9957.00	90.800	0.240	7139.78	2881.82	2854.34	-405.17	40°11'01.666"N	104°42'45.231"W	1.83	
10042.00	90.980	358.880	7138.46	2966.34	2939.32	-405.82	40°11'02.506"N	104°42'45.239"W	1.61	
10128.00	90.950	359.110	7137.01	3051.94	3025.30	-407.33	40°11'03.356"N	104°42'45.259"W	0.27	
10213.00	90.950	358.000	7135.60	3136.59	3110.26	-409.47	40°11'04.195"N	104°42'45.286"W	1.31	
10298.00	88.330	357.110	7136.13	3221.37	3195.17	-413.10	40°11'05.034"N	104°42'45.333"W	3.26	
10384.00	87.900	357.120	7138.96	3307.16	3281.02	-417.43	40°11'05.883"N	104°42'45.389"W	0.50	
10469.00	87.620	357.250	7142.28	3391.92	3365.85	-421.60	40°11'06.721"N	104°42'45.442"W	0.36	



# Actual Wellpath Report

CAMP 4N-31HZ AWP

Page 5 of 7



REFERENCE WELLPATH IDENTIFICATION			
Operator	KERR-MCGEE OIL & GAS ONSHORE LP	Slot	SLOT#03 CAMP 4N-31HZ (460'FSL & 1320'FWL, SEC.31)
Area	COLORADO	Well	CAMP 4N-31HZ
Field	WELD COUNTY (KERR MCGEE)	Wellbore	CAMP 4N-31HZ AWB
Facility	SEC.31-T3N-R65W		

WELLPATH DATA (147 stations)										
MD [ft]	Inclination [°]	Azimuth [°]	TVD [ft]	Vert Sect [ft]	North [ft]	East [ft]	Latitude	Longitude	DLS [°/100ft]	Comments
10554.00	87.470	357.580	7145.92	3476.65	3450.68	-425.43	40°11'07.559"N	104°42'45.492"W	0.43	
10640.00	88.430	356.980	7149.00	3562.41	3536.53	-429.51	40°11'08.408"N	104°42'45.544"W	1.32	
10725.00	88.700	355.780	7151.13	3647.27	3621.33	-434.87	40°11'09.246"N	104°42'45.614"W	1.45	
10810.00	89.690	354.920	7152.32	3732.22	3706.04	-441.76	40°11'10.083"N	104°42'45.702"W	1.54	
10895.00	90.060	355.220	7152.51	3817.19	3790.73	-449.07	40°11'10.920"N	104°42'45.797"W	0.56	
10980.00	89.660	354.310	7152.72	3902.17	3875.37	-456.82	40°11'11.756"N	104°42'45.896"W	1.17	
11066.00	89.390	354.190	7153.43	3988.16	3960.94	-465.44	40°11'12.602"N	104°42'46.007"W	0.34	
11151.00	89.600	354.530	7154.18	4073.14	4045.52	-473.79	40°11'13.437"N	104°42'46.115"W	0.47	
11236.00	90.030	354.180	7154.45	4158.13	4130.11	-482.15	40°11'14.273"N	104°42'46.223"W	0.65	
11321.00	90.240	354.420	7154.25	4243.13	4214.69	-490.59	40°11'15.109"N	104°42'46.332"W	0.38	
11373.00	90.210	354.920	7154.05	4295.12	4266.46	-495.42	40°11'15.621"N	104°42'46.394"W	0.96	Last BHI MWD Survey
11441.00	90.210	354.920	7153.80	4363.10	4334.19	-501.45	40°11'16.290"N	104°42'46.472"W	0.00	Projection to Bit

HOLE & CASING SECTIONS - Ref Wellbore: CAMP 4N-31HZ AWB Ref Wellpath: CAMP 4N-31HZ AWP									
String/Diameter	Start MD [ft]	End MD [ft]	Interval [ft]	Start TVD [ft]	End TVD [ft]	Start N/S [ft]	Start E/W [ft]	End N/S [ft]	End E/W [ft]
13.5in Open Hole	16.00	850.00	834.00	16.00	850.00	0.00	0.00	0.15	-1.23
9.625in Casing Surface	16.00	850.00	834.00	16.00	850.00	0.00	0.00	0.15	-1.23
8.75in Open Hole	850.00	7520.00	6670.00	850.00	7150.10	0.15	-1.23	421.52	-540.33
7in Casing Intermediate	16.00	7414.00	7398.00	16.00	7136.35	0.00	0.00	316.49	-541.53
6.125in Open Hole	7414.00	11441.00	4027.00	7136.35	7153.80	316.49	-541.53	4334.19	-501.45



# Actual Wellpath Report

CAMP 4N-31HZ AWP

Page 6 of 7



REFERENCE WELLPATH IDENTIFICATION			
Operator	KERR-MCGEE OIL & GAS ONSHORE LP	Slot	SLOT#03 CAMP 4N-31HZ (460'FSL & 1320'FWL, SEC.31)
Area	COLORADO	Well	CAMP 4N-31HZ
Field	WELD COUNTY (KERR MCGEE)	Wellbore	CAMP 4N-31HZ AWB
Facility	SEC.31-T3N-R65W		

TARGETS									
Name	MD [ft]	TVD [ft]	North [ft]	East [ft]	Grid East [US ft]	Grid North [US ft]	Latitude	Longitude	Shape
CAMP 5 PAD SECTION 30		11.00	-6.09	2666.46	3223102.38	1307943.65	40°10'33.398"N	104°42'05.659"W	polygon
CAMP 5 PAD SECTION 31		11.00	-6.09	2666.46	3223102.38	1307943.65	40°10'33.398"N	104°42'05.659"W	polygon
CAMP 4N-31HZ BHL ON PLAT (460'FNL & 799'FWL,REV-1)		7132.00	4359.89	-494.81	3219902.54	1312281.14	40°11'16.544"N	104°42'46.386"W	point
CAMP 4N-31HZ BHL ON PLAT (460'FNL & 799'FWL,REV-2)		7145.00	4359.89	-494.81	3219902.54	1312281.14	40°11'16.544"N	104°42'46.386"W	point
CAMP 5 PAD SEC. 30 HARDLINES (460' SETBACKS)		7411.00	-6.09	2666.46	3223102.38	1307943.65	40°10'33.398"N	104°42'05.659"W	polygon
CAMP 5 PAD SEC. 31 HARDLINES (460' SETBACKS)		7411.00	-6.09	2666.46	3223102.38	1307943.65	40°10'33.398"N	104°42'05.659"W	polygon

WELLPATH COMPOSITION - Ref Wellbore: CAMP 4N-31HZ AWB Ref Wellpath: CAMP 4N-31HZ AWP				
Start MD [ft]	End MD [ft]	Positional Uncertainty Model	Log Name/Comment	Wellbore
16.00	802.00	Generic gyro - continuous (Standard)	GYRODATA SURVEYS <116-802>	CAMP 4N-31HZ AWB
802.00	7469.00	NaviTrak (Standard)	BHI MWD SURVEYS 8 3/4" HOLE <891-7469>	CAMP 4N-31HZ AWB
7469.00	11373.00	OnTrak (Standard)	BHI MWD SURVEYS 6 1/8" HOLE <7486-11373>	CAMP 4N-31HZ AWB
11373.00	11441.00	Blind Drilling (std)	Projection to bit	CAMP 4N-31HZ AWB



# Actual Wellpath Report

CAMP 4N-31HZ AWP

Page 7 of 7



REFERENCE WELLPATH IDENTIFICATION			
Operator	KERR-MCGEE OIL & GAS ONSHORE LP	Slot	SLOT#03 CAMP 4N-31HZ (460'FSL & 1320'FWL, SEC.31)
Area	COLORADO	Well	CAMP 4N-31HZ
Field	WELD COUNTY (KERR MCGEE)	Wellbore	CAMP 4N-31HZ AWB
Facility	SEC.31-T3N-R65W		

WELLPATH COMMENTS				
MD [ft]	Inclination [°]	Azimuth [°]	TVD [ft]	Comment
16.00	0.000	271.290	16.00	Tie-On
116.00	0.160	271.290	116.00	Begin GYRO Surveys
802.00	0.270	297.950	802.00	Tie-Into GYRO Surveys
891.00	0.240	94.850	891.00	Begin BHI MWD Surveys
7414.00	79.382	0.100	7136.35	7" Casing Point
11373.00	90.210	354.920	7154.05	Last BHI MWD Survey
11441.00	90.210	354.920	7153.80	Projection to Bit