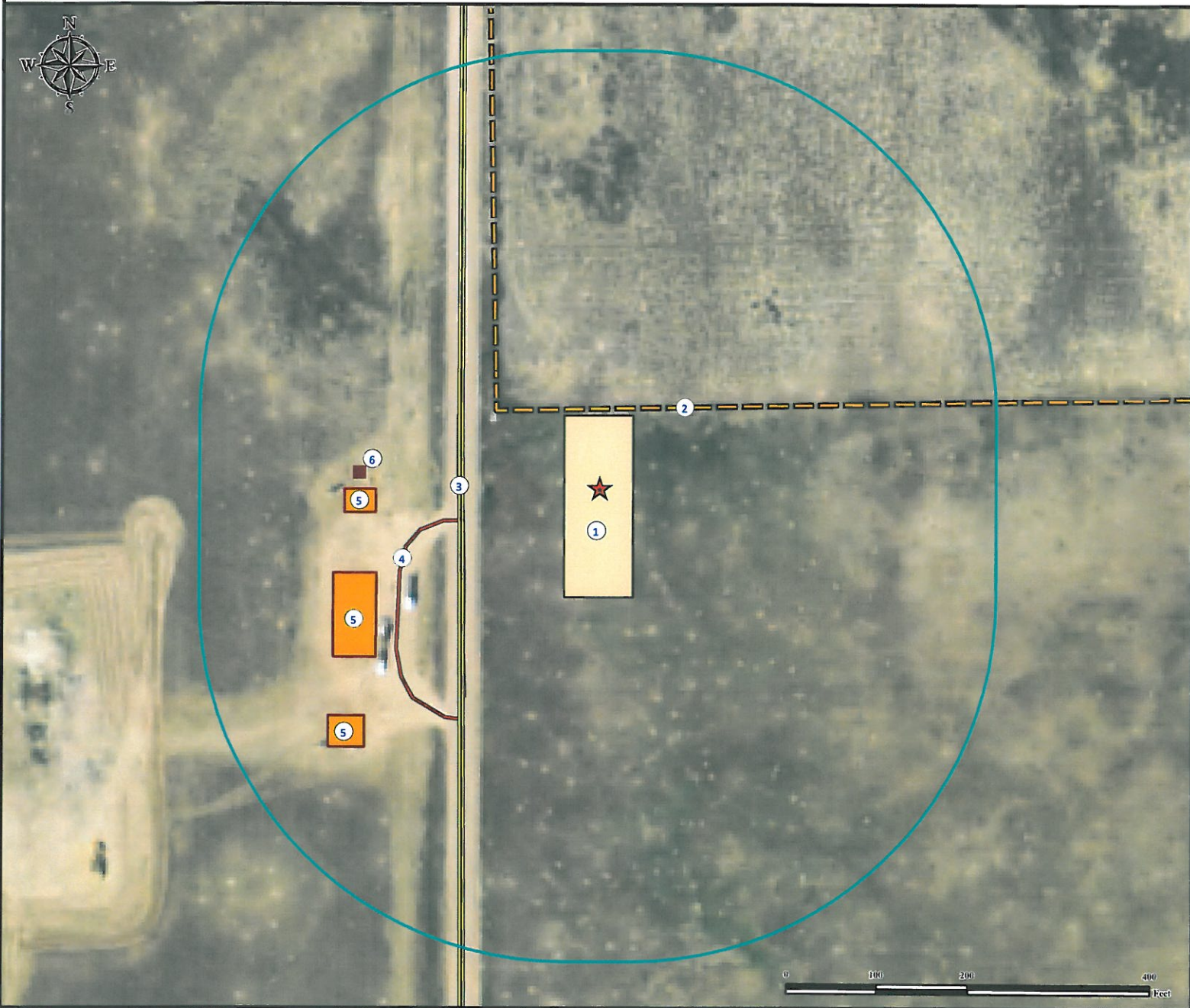


Location Drawing

BDE 27NW FACILITY

NW¼ SW¼ SECTION 27, TOWNSHIP 4 NORTH, RANGE 68 WEST OF THE 6TH PRINCIPAL MERIDIAN



- | | |
|--------------------------------|---|
| 1. Proposed BDE 27NW Facility. | 4. Private Road is ±175' SW. |
| 2. Fence is ±87' N. | 5. Existing Facilities are ±245' W, ±261' SW, and ±359' SW. |
| 3. County Road 7 is ±152' W. | 6. Emission Control Device is ±263' W. |

Legend

- | | | |
|-------------------|----------------------|-----------------|
| ★ Reference Point | □ Proposed Facility | — Private Roads |
| ■ ECD | ○ 400' Radius | — Fence |
| | □ Facility Enclosure | == Public Road |

Reference Location

** All Measurements are Made from Reference Point ★ **
 Lat: 40.283599° Long: -104.998181° (NAD83)
 Elevation: 5043 Feet

145' FWL 2392' FSL



Use our resources to find yours!
www.petro-fs.com
 (303) 928-7128

Field Date: 08/15/2012
 Drafting Date: 10/10/2012
 Drafter: GWB
 Revision: 1

Surface Use: Rangeland

Data Sources:
 - Aerial courtesy of NAIP (2011)

Prepared for:

