

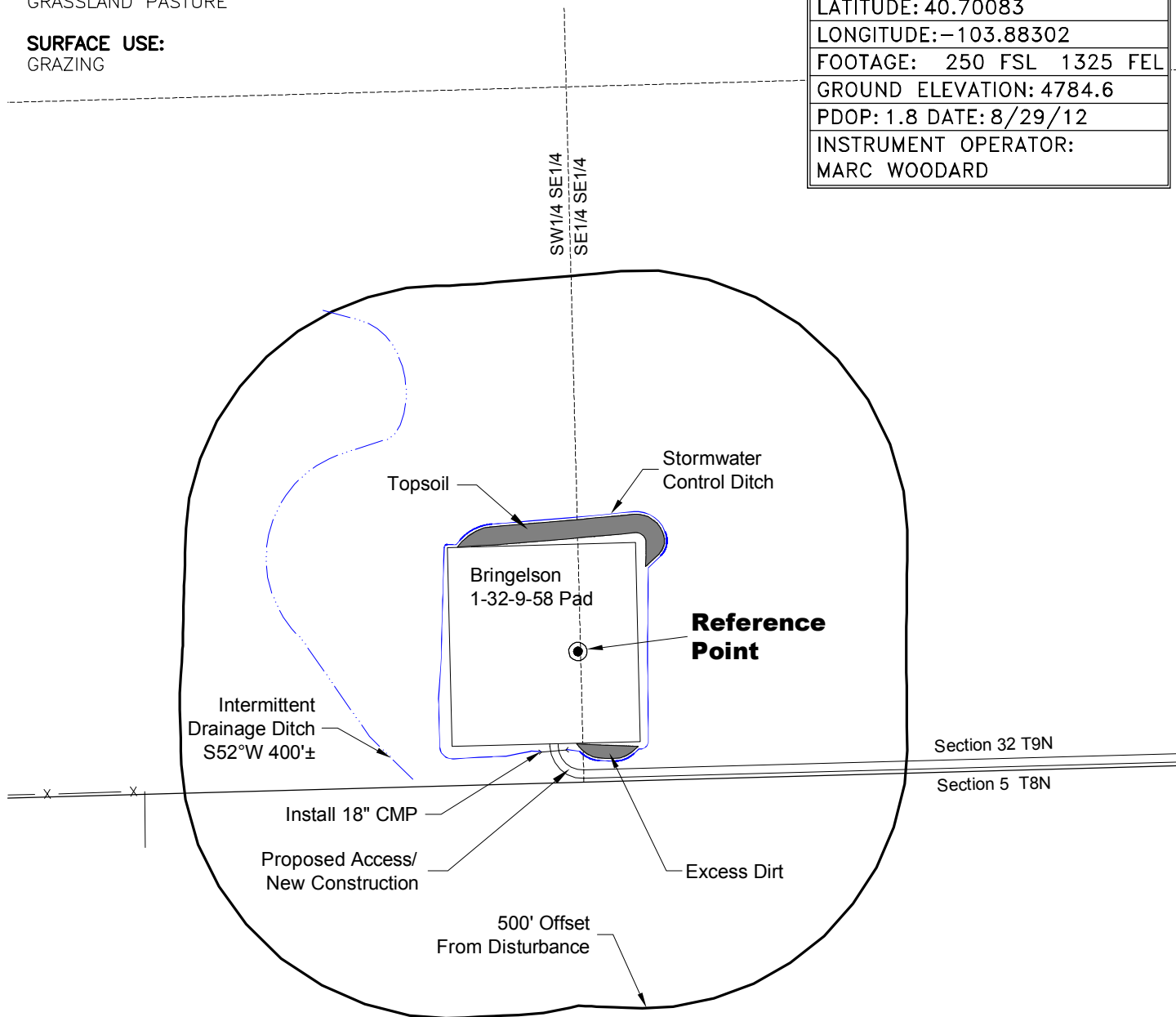
# LOCATION DRAWING

**VEGETATION:**  
GRASSLAND PASTURE

**SURFACE USE:**  
GRAZING

## REFERENCE POINT

LATITUDE: 40.70083
LONGITUDE: -103.88302
FOOTAGE: 250 FSL 1325 FEL
GROUND ELEVATION: 4784.6
PDOP: 1.8 DATE: 8/29/12
INSTRUMENT OPERATOR: MARC WOODARD



## NOTE-DISTANCE TO NEAREST:

Property Line - S 250'  
Public Road - WCR 127 - S78°E 6,750'±  
Building - S16°E 4.2 Miles±  
Railroad - UPRR S 31 Miles±  
Powerline - N0°E 5,070'±

DISTURBANCE ACREAGE:  
4.4± DRILLING OPERATIONS  
1.0± INTERIM RECLAIM

## NOTE:

ALL PRODUCTION FACILITIES WILL BE ON PAD.

10/15/12



0 300 600  
Graphic Scale in Feet  
1" = 300'



LAND SURVEYING AND MAPPING  
LAFAYETTE - WINTER PARK  
Ph 303 666 0379 Fx 303 665 6320

**CARRIZO OIL & GAS, INC**  
**BRINGELSON 1-32-9-58 PAD**

**SW1/4 SE1/4 SECTION 32 T9N R58W**  
**6th PM WELD COUNTY COLORADO**