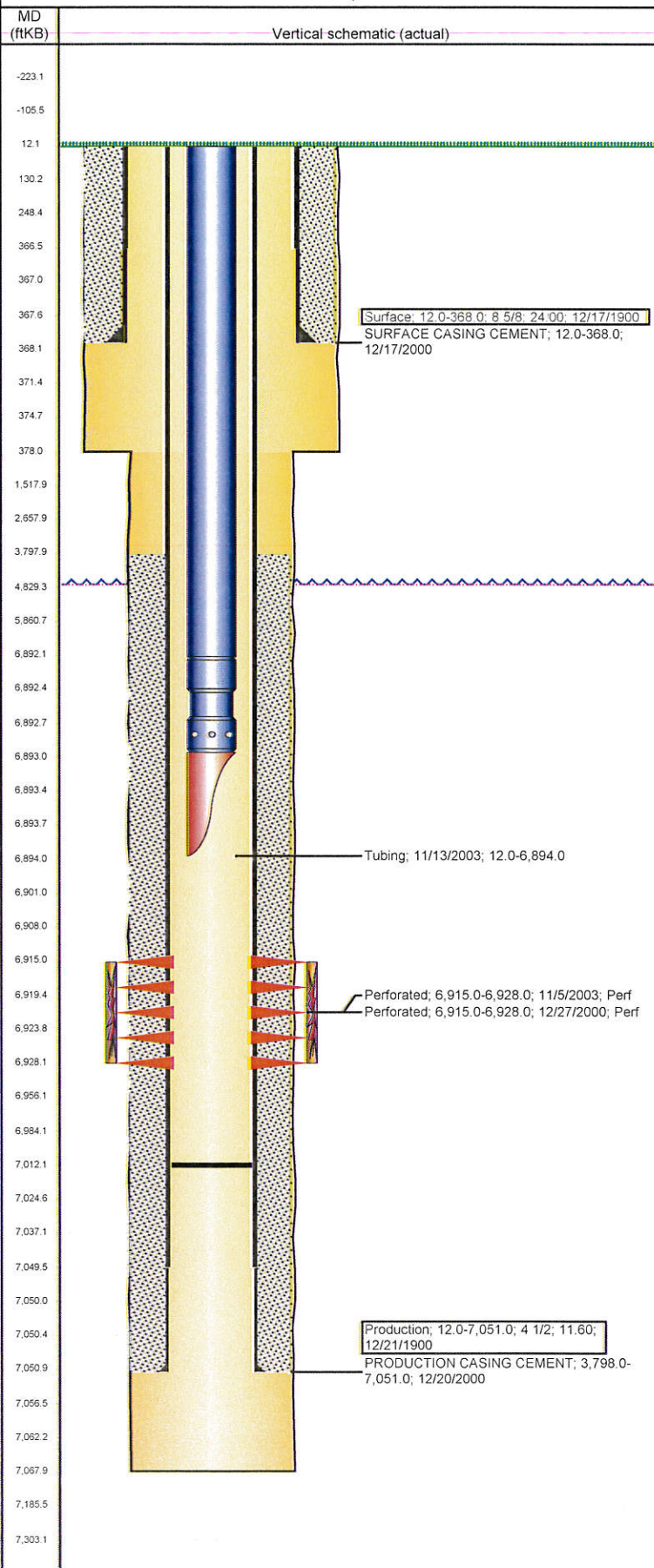


Well Name: EISENSTAT 22-11

VERTICAL - ORIGINAL HOLE, 10/19/2012 9:37:55 AM



Well Header

API	Business Unit	District	Well Config
05-123-20100	WATTENBERG	15	VERTICAL
Original KB Elevation (ft)	KB - GL / MSL (ftKB)	Spud Date	P & A Date
4,736.00	12.00	12/16/2000	
Comment			

Directions To Well

Congressional Location

Quarter 1	Quarter 2	Quarter 3	Quarter 4	Section	Township	Twnshp N...	Range	Rng E/W Dir
		NE	NE	22	6 N		64	W

Bottom Hole Location

North-South Distance (ft)	From N or S Line	East-West Distance (ft)	From E or W Line
---------------------------	------------------	-------------------------	------------------

Plug Back Total Depths

Date	Depth (ftKB)	Method	Com
12/21/2000	7,013.0	TAG	TAGGED PLUG @7013
12/26/2000	7,004.0	CASED HOLE LOG	DEPTH LOGGER ON CBL
1/19/2001	7,012.0	TAG	C/O FILL TO 7012'

Wellbore Sections

Section Des	Size (in)	Act Top (ftKB)	Act Btm (ftKB)
SURFACE	12 1/4	12.0	378.0
PRODUCTION	7 7/8	378.0	7,068.0

Zone Statuses

Zone Name	Status Date	Status	Job
CODELL	1/3/2001	PR	DRILLING/COMPLETION - ORIGINAL, 12/16/2000 00:00
CODELL	11/14/2003	PR	RE-FRAC, 10/30/2003 00:00

Casing Strings

Surface, 368.0ftKB

Casing Description	Run Date	OD (in)	Wt/Len (l...)	Grade	Top (ftKB)	Set Depth...
Surface	12/17/1900	8 5/8	24.00		12.0	368.0

Production, 7,051.0ftKB

Casing Description	Run Date	OD (in)	Wt/Len (l...)	Grade	Top (ftKB)	Set Depth...
Production	12/21/1900	4 1/2	11.60		12.0	7,051.0

Cement

Description	Top Depth (ftKB)	Bottom Depth (ftKB)
SURFACE CASING CEMENT	12.0	368.0
Description	Top Depth (ftKB)	Bottom Depth (ftKB)
PRODUCTION CASING CEMENT	3,798.0	7,051.0

Tubing Components

Item Des	OD (in)	Wt (lb/ft)	Grade	Jts	Len (ft)	Btm (ftKB)	Btm (TVD) (ftKB)
Tubing	2 3/8	4.70		220	6,880.00	6,892.0	
Seat Nipple	2 3/8				1.00	6,893.0	
Mule Shoe	2 3/8				1.00	6,894.0	

Perforation Data

Zone	Bnch/St g	Entered Shot Total	Top (ftKB)	Btm (ftKB)	Date
CODELL, ORIGINAL HOLE		52	6,915.0	6,928.0	11/5/2003
CODELL, ORIGINAL HOLE		52	6,915.0	6,928.0	12/27/2000

Stimulations & Treatments

Date	Zone	Primary Job Type
12/29/2000	CODELL, ORIGINAL HOLE	DRILLING/COMPLETION - ORIGINAL
Technical Result		
Tech Result Details		
Tech Result Note		

Comment

Date	Zone	Primary Job Type
11/11/2003	CODELL, ORIGINAL HOLE	RE-FRAC
Technical Result		
Tech Result Details		
Tech Result Note		

Comment

Other In Hole

Run Date	Des	OD (in)	Top (ftKB)	Btm (ftKB)
----------	-----	---------	------------	------------

Logs

Date	Type	Top (ftKB)	Btm (ftKB)
12/20/2000	COMPENSATED DENSITY	12.0	7,056.0

Well Name: EISENSTAT 22-11

VERTICAL - ORIGINAL HOLE, 10/19/2012 9:37:55 AM

Logs

Date	Type	Top (ftKB)	Btm (ftKB)
12/20/2000	INDUCTION	12.0	7,076.0
12/26/2000	CEMENT BOND	3,650.0	7,000.0

