

*The Road to Excellence Starts with Safety*

Sold To #: 300721	Ship To #: 2903164	Quote #:	Sales Order #: 9214635
Customer: WPX ENERGY ROCKY MOUNTAIN LLC-EBUS		Customer Rep: Bascom, Kenny	
Well Name: RWF	Well #: 22-32	API/UWI #: 05-045-21057	
Field: RULISON	City (SAP): RIFLE	County/Parish: Garfield	State: Colorado
Lat: N 39.486 deg. OR N 39 deg. 29 min. 8.48 secs.		Long: W 107.916 deg. OR W -108 deg. 5 min. 2.976 secs.	
Contractor: CYCLONE 17	Rig/Platform Name/Num: CYCLONE 17		
Job Purpose: Cement Surface Casing			
Well Type: Development Well		Job Type: Cement Surface Casing	
Sales Person: SCOTT, KYLE	Srvc Supervisor: YOUNG, JEREMY	MBU ID Emp #: 418013	

**Job Personnel**

HES Emp Name	Exp Hrs	Emp #	HES Emp Name	Exp Hrs	Emp #	HES Emp Name	Exp Hrs	Emp #
BURKE, BRENDAN Patrick	4	487782	CASTILLO, FRANCISCO Javier	4	513620	GOWEN, WESLEY M	4	496205
YOUNG, JEREMY R	4	418013						

**Equipment**

HES Unit #	Distance-1 way	HES Unit #	Distance-1 way	HES Unit #	Distance-1 way	HES Unit #	Distance-1 way
10565341	60 mile	10616651C	60 mile	10804567	60 mile	11259881	60 mile
11808827	60 mile						

**Job Hours**

Date	On Location Hours	Operating Hours	Date	On Location Hours	Operating Hours	Date	On Location Hours	Operating Hours
02/22/2012	1.5	1	02/23/2012	2.5	2			

**TOTAL** Total is the sum of each column separately

**Job**

**Job Times**

Formation Name	Formation Depth (MD)	Top	Bottom	Called Out	Date	Time	Time Zone
Form Type			BHST	On Location	22 - Feb - 2012	18:45	MST
Job depth MD	1127.5 ft		Job Depth TVD	Job Started	22 - Feb - 2012	22:30	MST
Water Depth			Wk Ht Above Floor	Job Completed	23 - Feb - 2012	00:02	MST
Perforation Depth (MD)	From		To	Departed Loc	23 - Feb - 2012	00:59	MST
					23 - Feb - 2012	02:30	MST

**Well Data**

Description	New / Used	Max pressure psig	Size in	ID in	Weight lbm/ft	Thread	Grade	Top MD ft	Bottom MD ft	Top TVD ft	Bottom TVD ft
13 1/2" OPEN HOLE				13.5				.	1130.		
9 5/8" SURFACE CASING	Unknown		9.625	9.001	32.3		H-40	.	1127.5		

**Sales/Rental/3<sup>rd</sup> Party (HES)**

Description	Qty	Qty uom	Depth	Supplier
PLUG,CMTG, TOP, 9 5/8, HWE, 8.16 MIN/9.06 MA	1	EA		

**Tools and Accessories**

Type	Size	Qty	Make	Depth	Type	Size	Qty	Make	Depth	Type	Size	Qty	Make
Guide Shoe					Packer					Top Plug	9.625	1	HES
Float Shoe					Bridge Plug					Bottom Plug			
Float Collar					Retainer					SSR plug set			
Insert Float										Plug Container	9.625	1	HES
Stage Tool										Centralizers			

**Miscellaneous Materials**

Gelling Agt	Conc	Surfactant	Conc	Acid Type	Qty	Conc	%
Treatment Fld	Conc	Inhibitor	Conc	Sand Type	Size	Qty	

**Fluid Data**

Stage/Plug #: 1

Fluid #	Stage Type	Fluid Name	Qty	Qty uom	Mixing Density lbm/gal	Yield ft <sup>3</sup> /sk	Mix Fluid Gal/sk	Rate bbl/min	Total Mix Fluid Gal/sk
1	Fresh Water	FRESH WATER	20.00	bbbl	8.33	.0	.0	4	
2	VersaCem Lead	VERSACEM (TM) SYSTEM (452010)	160.0	sacks	12.3	2.38	13.75	8	13.75
3	VersaCem Tail	VERSACEM (TM) SYSTEM (452010)	160.0	sacks	12.8	2.11	11.75	8	11.75
4	Displacement Fluid	FRESH WATER	85.20	bbbl	8.34	.0	.0	10	
Calculated Values		Pressures		Volumes					
Displacement	85.2	Shut In: Instant		Lost Returns	NO	Cement Slurry	127.9	Pad	
Top Of Cement	SURFACE	5 Min		Cement Returns	17	Actual Displacement	85.2	Treatment	
Frac Gradient		15 Min		Spacers	20	Load and Breakdown		Total Job	233.1
Rates									
Circulating		Mixing	8	Displacement	10	Avg. Job	9		
Cement Left In Pipe	Amount	44.5 ft	Reason	Shoe Joint					
Frac Ring # 1 @	ID	Frac ring # 2 @	ID	Frac Ring # 3 @	ID	Frac Ring # 4 @	ID		
The Information Stated Herein Is Correct				Customer Representative Signature					

*The Road to Excellence Starts with Safety*

Sold To #: 300721	Ship To #: 2903164	Quote #:	Sales Order #: 9214635
Customer: WPX ENERGY ROCKY MOUNTAIN LLC-EBUS		Customer Rep: Bascom, Kenny	
Well Name: RWF	Well #: 22-32	API/UWI #: 05-045-21057	
Field: RULISON	City (SAP): RIFLE	County/Parish: Garfield	State: Colorado
<b>Legal Description:</b>			
Lat: N 39.486 deg. OR N 39 deg. 29 min. 8.48 secs.		Long: W 107.916 deg. OR W -108 deg. 5 min. 2.976 secs.	
Contractor: CYCLONE 17		Rig/Platform Name/Num: CYCLONE 17	
Job Purpose: Cement Surface Casing			Ticket Amount:
Well Type: Development Well		Job Type: Cement Surface Casing	
Sales Person: SCOTT, KYLE		Srvc Supervisor: YOUNG, JEREMY	MBU ID Emp #: 418013

Activity Description	Date/Time	Cht #	Rate bbl/min	Volume bbl		Pressure psig		Comments
				Stage	Total	Tubing	Casing	
Call Out	02/22/2012 18:45							TD 1130 FT, TP 1127.5 FT, SHOE 44.5 FT, HOLE 13 1/2 IN, MUD WT 10 PPG, CSG 9 5/8 IN 32.3 LB/FT H-40
Pre-Convoy Safety Meeting	02/22/2012 20:50							WITH ALL HES PERSONNEL
Crew Leave Yard	02/22/2012 21:00							
Arrive At Loc	02/22/2012 22:30							RIG WAS RUNNING CASING UPON HES ARRIVAL
Assessment Of Location Safety Meeting	02/22/2012 22:35							WITH ALL HES PERSONNEL
Other	02/22/2012 22:40							SPOT EQUIPMENT
Pre-Rig Up Safety Meeting	02/22/2012 22:50							WITH ALL HES PERSONNEL
Rig-Up Equipment	02/22/2012 23:00							
Pre-Job Safety Meeting	02/22/2012 23:45							WITH ALL PERSONNEL ON LOCATION
Start Job	02/23/2012 00:02							
Other	02/23/2012 00:03		2	2			46.0	FILL LINES WITH FRESH WATER
Test Lines	02/23/2012 00:05							TEST LINES TO 3000 PSI. PRESSURE HOLDING
Pump Spacer 1	02/23/2012 00:11		4	20			110.0	FRESH WATER
Pump Lead Cement	02/23/2012 00:20		8	67.8			420.0	160 SKS AT 12.3 PPG, 2.38 FT3/SK, 13.75 GAL/SK
Activity Description	Date/Time	Cht	Rate bbl/min	Volume bbl		Pressure psig		Comments

Sold To #: 300721

Ship To #: 2903164

Quote #:

Sales Order #:

9214635

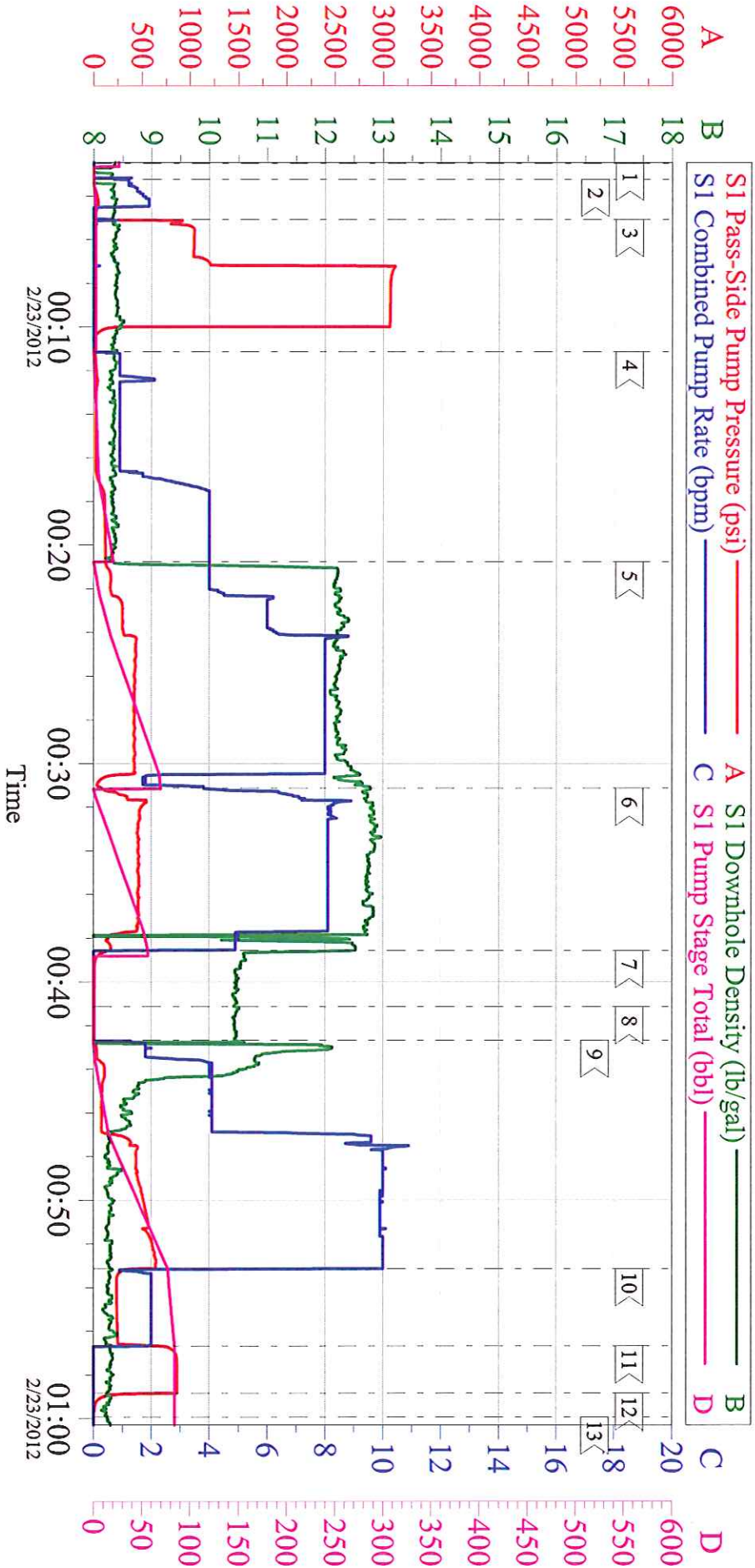
SUMMIT Version: 7.3.0021

Thursday, February 23, 2012 01:50:00

		#	Stage	Total	Tubing	Casing	
Pump Tail Cement	02/23/2012 00:31		8	60.1		460.0	160 SKS AT 12.8 PPG, 2.11 FT3/SK, 11.75 GAL/SK
Shutdown	02/23/2012 00:38						
Drop Top Plug	02/23/2012 00:41						PLUG LAUNCHED
Pump Displacement	02/23/2012 00:42		10	75.2		650.0	FRESH WATER
Slow Rate	02/23/2012 00:53		2	10		253.0	SLOW RATE 10 BBLS PRIOR TO CALCULATED DISPLACEMENT
Bump Plug	02/23/2012 00:56		2		85.2	865.0	PLUG BUMPED
Check Floats	02/23/2012 00:58						FLOATS HOLDING. RETURNED 0.5 BBL H2O TO PUMP
End Job	02/23/2012 00:59						PIPE WAS STATIC DURING JOB. GOOD CIRCULATION THROUGHOUT JOB. HES RETURNED 17 BBL OF CEMENT TO SURFACE
Pre-Rig Down Safety Meeting	02/23/2012 01:05						WITH ALL HES PERSONNEL
Rig-Down Equipment	02/23/2012 01:10						
Pre-Convoy Safety Meeting	02/23/2012 02:20						WITH ALL HES PERSONNEL
Crew Leave Location	02/23/2012 02:30						
Comment	02/23/2012 02:31						THANK YOU FOR USING HALLIBURTON CEMENT DEPARTMENT. JEREMY YOUNG AND CREW.

# WPX - RWF 22-32

## 9 5/8 SURFACE



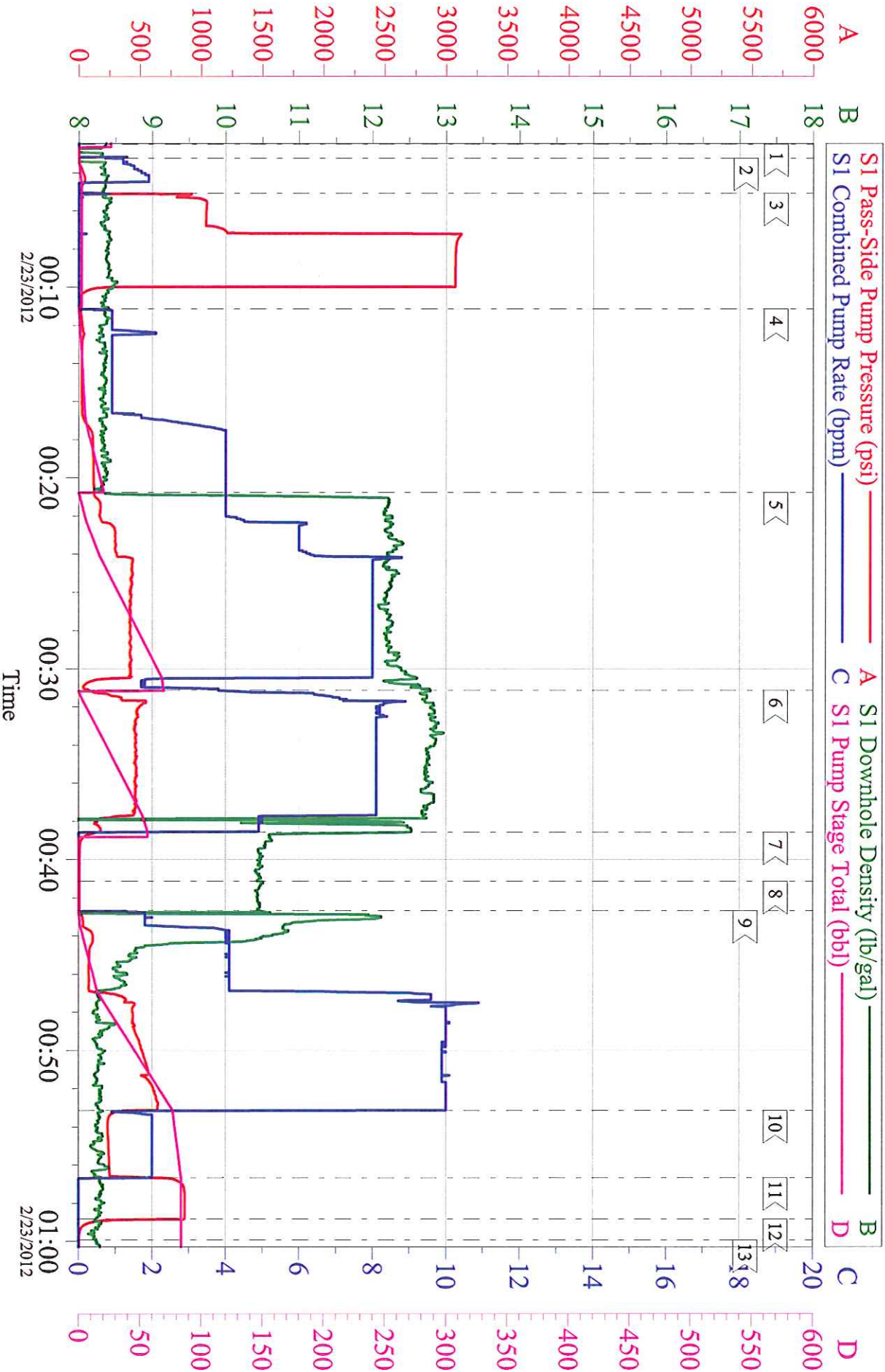
### Local Event Log

1 <	START JOB	00:02:30	2 <	FILL LINES	00:03:14	3 <	TEST LINES	00:05:04
4 <	PUMP H2O SPACER	00:11:08	5 <	PUMP LEAD CEMENT	00:20:46	6 <	PUMP TAIL CEMENT	00:31:08
7 <	SHUTDOWN	00:38:33	8 <	DROP TOP PLUG	00:41:08	9 <	PUMP DISPLACEMENT	00:42:39
10 <	SLOW RATE	00:53:08	11 <	BUMP PLUG	00:56:39	12 <	CHECK FLOATS	00:58:49
13 <	END JOB	00:59:55						

Customer: WPX Well Description: RWF 22-32 Company Rep: KENNY BASCOM	Job Date: 22-Feb-2012 Job Type: SURFACE Cement Supervisor: JEREMY YOUNG
Sales Order #: 9214635 ADC Used: YES Elite #: BRENDAN BURKE	

# WPX - RWF 22-32

## 9 5/8 SURFACE



Customer: WPX  
 Well Description: RWF 22-32  
 Company Rep: KENNY BASCOM

Job Date: 22-Feb-2012  
 Job Type: SURFACE  
 Cement Supervisor: JEREMY YOUNG

Sales Order #: 9214635  
 ADC Used: YES  
 Elite #: BRENDAN BURKE

OptiCem v6.4.10  
 23-Feb-12 01:15