

The Road to Excellence Starts with Safety

Sold To #: 300721		Ship To #: 2893452		Quote #:		Sales Order #: 9054551							
Customer: WILLIAMS PRODUCTION RMT INC - EBUS				Customer Rep: Towers, Ron									
Well Name: RWF			Well #: 421-32		API/UWI #: 05-045-21051								
Field: RULISON		City (SAP):		County/Parish: Garfield		State: Colorado							
Contractor: CYCLONE 17			Rig/Platform Name/Num: CYCLONE 17										
Job Purpose: Cement Surface Casing													
Well Type: Producing Well				Job Type: Cement Surface Casing									
Sales Person: MAYO, MARK			Srcv Supervisor: SMITH, CHRISTOPHER			MBU ID Emp #: 452619							
Job Personnel													
HES Emp Name		Exp Hrs	Emp #	HES Emp Name		Exp Hrs	Emp #	HES Emp Name		Exp Hrs	Emp #		
LEIST, JAMES R			362787	SALAZAR, PAUL Omar			445614	SMITH, CHRISTOPHER Scott			452619		
TROUT, LANCE Michael			485310										
Equipment													
HES Unit #	Distance-1 way	HES Unit #	Distance-1 way	HES Unit #	Distance-1 way	HES Unit #	Distance-1 way						
10001431	60 mile	10567589C	60 mile	10724643	60 mile	10995027	60 mile						
11259882	60 mile												
Job Hours													
Date	On Location Hours	Operating Hours	Date	On Location Hours	Operating Hours	Date	On Location Hours	Operating Hours					
TOTAL			Total is the sum of each column separately										
Job					Job Times								
Formation Name					Date		Time	Time Zone					
Formation Depth (MD) Top		Bottom			Called Out		28 - Nov - 2011	13:30	MST				
Form Type		BHST			On Location		28 - Nov - 2011	17:30	MST				
Job depth MD		1160. m		Job Depth TVD		1160. m		Job Started		28 - Nov - 2011	23:01	MST	
Water Depth		Wk Ht Above Floor			4. m		Job Completed		28 - Nov - 2011	23:52	MST		
Perforation Depth (MD) From		To			Departed Loc		28 - Nov - 2011	00:50	MST				
Well Data													
Description	New / Used	Max pressure MPa	Size mm	ID mm	Weight kg/m	Thread	Grade	Top MD m	Bottom MD m	Top TVD m	Bottom TVD m		
Sales/Rental/3rd Party (HES)													
Description					Qty	Qty uom	Depth	Supplier					
PLUG,CMTG, TOP,9 5/8,HWE,8.16 MIN/9.06 MA					1	EA							
R/A DENSOMETER W/CHART RECORDER,/JOB,ZI					1	JOB							
PORT. DAS W/CEMWIN;ACQUIRE W/HES, ZI					1	JOB							
ADC (AUTO DENSITY CTRL) SYS, /JOB,ZI					1	JOB							
Tools and Accessories													
Type	Size	Qty	Make	Depth	Type	Size	Qty	Make	Depth	Type	Size	Qty	Make
Guide Shoe					Packer					Top Plug			
Float Shoe					Bridge Plug					Bottom Plug			
Float Collar					Retainer					SSR plug set			
Insert Float										Plug Container			
Stage Tool										Centralizers			
Miscellaneous Materials													
Gelling Agt		Conc		Surfactant		Conc		Acid Type		Qty		Conc	%
Treatment Fld		Conc		Inhibitor		Conc		Sand Type		Size		Qty	
Fluid Data													
Stage/Plug #: 1													

Fluid #	Stage Type	Fluid Name	Qty	Qty uom	Mixing Density kg/m3	Yield m3/sk	Mix Fluid m3/tonne	Rate m3/min	Total Mix Fluid m3/tonne
1	Water Spacer		20.00	bbbl	8.34	.0	.0	.0	
2	Lead Cement	VERSACEM (TM) SYSTEM (452010)	160.0	sacks	12.3	2.38	13.75		13.75
	13.75 Gal	FRESH WATER							
3	Tail Cement	VERSACEM (TM) SYSTEM (452010)	160.0	sacks	12.8	2.11	11.75		11.75
	11.75 Gal	FRESH WATER							
4	Displacement Fluid		87.00	bbbl	8.34	.0	.0	.0	
Calculated Values		Pressures		Volumes					
Displacement		Shut In: Instant		Lost Returns		Cement Slurry		Pad	
Top Of Cement		5 Min		Cement Returns		Actual Displacement		Treatment	
Frac Gradient		15 Min		Spacers		Load and Breakdown		Total Job	
Rates									
Circulating		Mixing		Displacement		Avg. Job			
Cement Left In Pipe	Amount	0 ft	Reason	Shoe Joint					
Frac Ring # 1 @	ID	Frac ring # 2 @	ID	Frac Ring # 3 @	ID	Frac Ring # 4 @	ID		
The Information Stated Herein Is Correct				Customer Representative Signature					

The Road to Excellence Starts with Safety

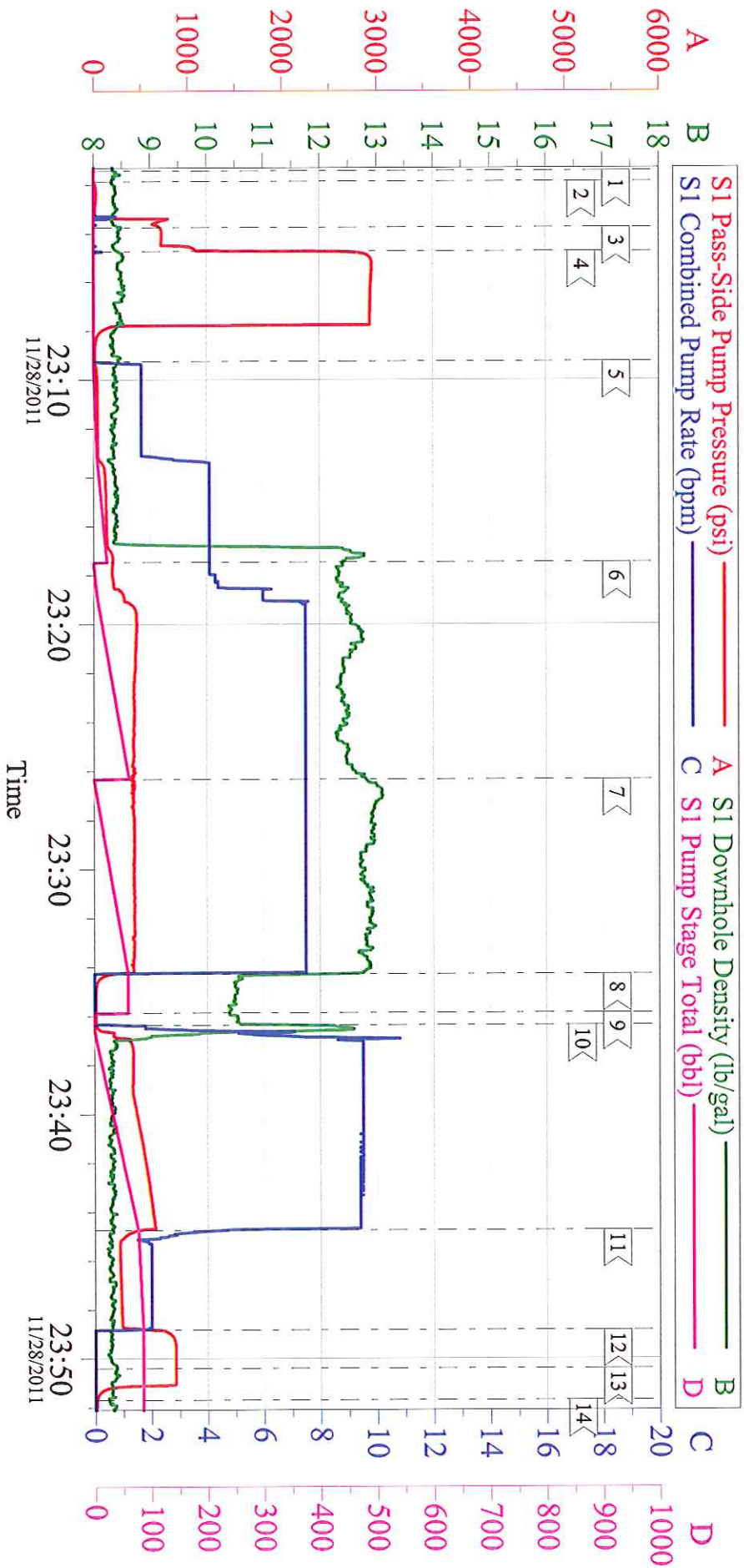
Sold To #: 300721	Ship To #: 2893452	Quote #:	Sales Order #: 9054551
Customer: WILLIAMS PRODUCTION RMT INC - EBUS		Customer Rep: Towers, Ron	
Well Name: RWF	Well #: 421-32	API/UWI #: 05-045-21051	
Field: RULISON	City (SAP):	County/Parish: Garfield	State: Colorado
Legal Description:			
Lat: N 0 deg. OR N 0 deg. 0 min. 0 secs.		Long: E 0 deg. OR E 0 deg. 0 min. 0 secs.	
Contractor: CYCLONE 17	Rig/Platform Name/Num: CYCLONE 17		
Job Purpose: Cement Surface Casing			Ticket Amount:
Well Type: Producing Well		Job Type: Cement Surface Casing	
Sales Person: MAYO, MARK	Srvc Supervisor: SMITH, CHRISTOPHER	MBU ID Emp #: 452619	

Activity Description	Date/Time	Cht #	Rate m3/min	Volume m3		Pressure MPa		Comments
				Stage	Total	Tubing	Casing	
Pre-Convoy Safety Meeting	11/28/2011 03:00							ALL HES PERSONEL
Crew Leave Yard	11/28/2011 03:30							
Arrive At Loc	11/28/2011 05:10							RIG PULLING DRILL PIPE.
Assessment Of Location Safety Meeting	11/28/2011 05:30							ALL HES PERSONEL
Rig-Up Equipment	11/28/2011 22:00							
Pre-Job Safety Meeting	11/28/2011 22:40							ALL HES PERSONEL AND RIG CREW
Start Job	11/28/2011 23:01							TD 1160', TP 1145', SJ 43', OH 14", CSG 9.625" 32.3 #, MUD 10.5 PPG.
Other	11/28/2011 23:01		2	2			27.0	FILL LINES
Pressure Test	11/28/2011 23:04		0.5	0.5				ALL LINES HELD PRESSURE @ 2970 PSI
Pump Spacer 1	11/28/2011 23:09		4	20			130.0	FRESH WATER
Pump Lead Cement	11/28/2011 23:17		8	67.8			420.0	160 SKS, 12.3 PPG, 2.38 FT3/SK, 13.75 GAL/SK, SET UP TIME 4:11 @ 70 BC.
Pump Tail Cement	11/28/2011 23:26		8	60.1			430.0	160 SKS, 12.8 PPG, 2.11 FT3/ SK, 11.75 GAL/SK, SET UP TIME 2:20 @ 70 BC.
Shutdown	11/28/2011 23:34							
Drop Top Plug	11/28/2011 23:35							PLUG WENT

Activity Description	Date/Time	Cht #	Rate m3/min	Volume m3		Pressure MPa		Comments
				Stage	Total	Tubing	Casing	
Pump Displacement	11/28/2011 23:36		10	76.7			600.0	FRESH WATER
Slow Rate	11/28/2011 23:44		2	10			290.0	
Bump Plug	11/28/2011 23:48						850.0	PLUG BUMPED
Check Floats	11/28/2011 23:50							FLOATS HELD
End Job	11/28/2011 23:52							GOOD CIRCULATION THROUGHOUT JOB, 28 BBLs OF CEMENT TO SURFACE, PIPE WAS NOT MOVED DURING JOB, RIG DID NOT USE ANY SUGAR.
Post-Job Safety Meeting (Pre Rig-Down)	11/28/2011 23:55							ALL HES PERSONEL
Rig-Down Completed	11/29/2011 00:40							
Depart Location Safety Meeting	11/29/2011 00:45							ALL HES PERSONEL
Crew Leave Location	11/29/2011 00:50							
Other	11/29/2011 00:51							THANK YOU FOR CHOOSING HALLIBURTON, CHRIS SMITH AND CREW

WILLIAMS - RWF 412-32

9.625" SURFACE

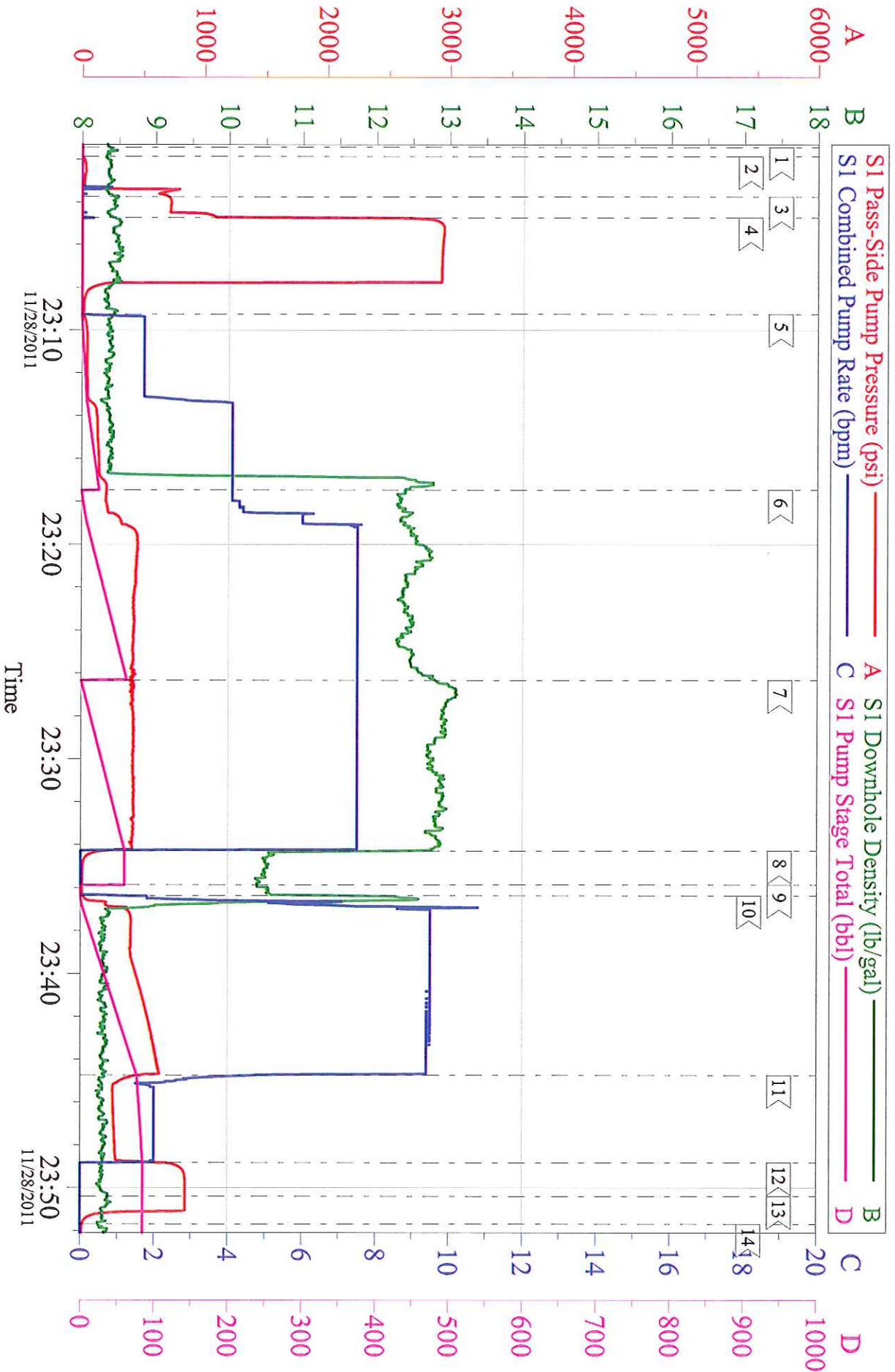


Local Event Log			
Intersection	SPPP	Intersection	SPPP
1 < START JOB	0.000	2 < FILL LINES	0.860
4 < TEST LINES (HIGH)	1686	5 < H2O SPACER	12.00
7 < TAIL CEMENT	398.8	8 < SHUTDOWN	176.0
10 < H2O DISPLACEMENT	17.87	9 < DROP PLUG	12.00
13 < CHECK FLOATS	856.0	12 < BUMP PLUG	622.7
		14 < END JOB	14.08
Intersection	SPPP	Intersection	SPPP
3 < TEST LINES (LOW)	705.7		
6 < LEAD CEMENT	203.0		

Customer: WILLIAMS PRODUCTION RMT INC - EBUS	Job Date: 28-Nov-2011	Sales Order #: 9054551
Well Description: RWF 421-32	Job Type: SURFACE	ADC Used: YES
Company Rep: R.TOWERS	Cement Supervisor: C.SMITH	Elite #3: JLEIST

WILLIAMS - RWF 412-32

9.625" SURFACE



Customer:	WILLIAMS PRODUCTION RMT INC - EBUS	Job Date:	28-Nov-2011	Sales Order #:	9054551
Well Description:	RWF 421-32	Job Type:	SURFACE	ADC Used:	YES
Company Rep:	R.TOWERS	Cement Supervisor:	C.SMITH	Elite #3:	JLEIST