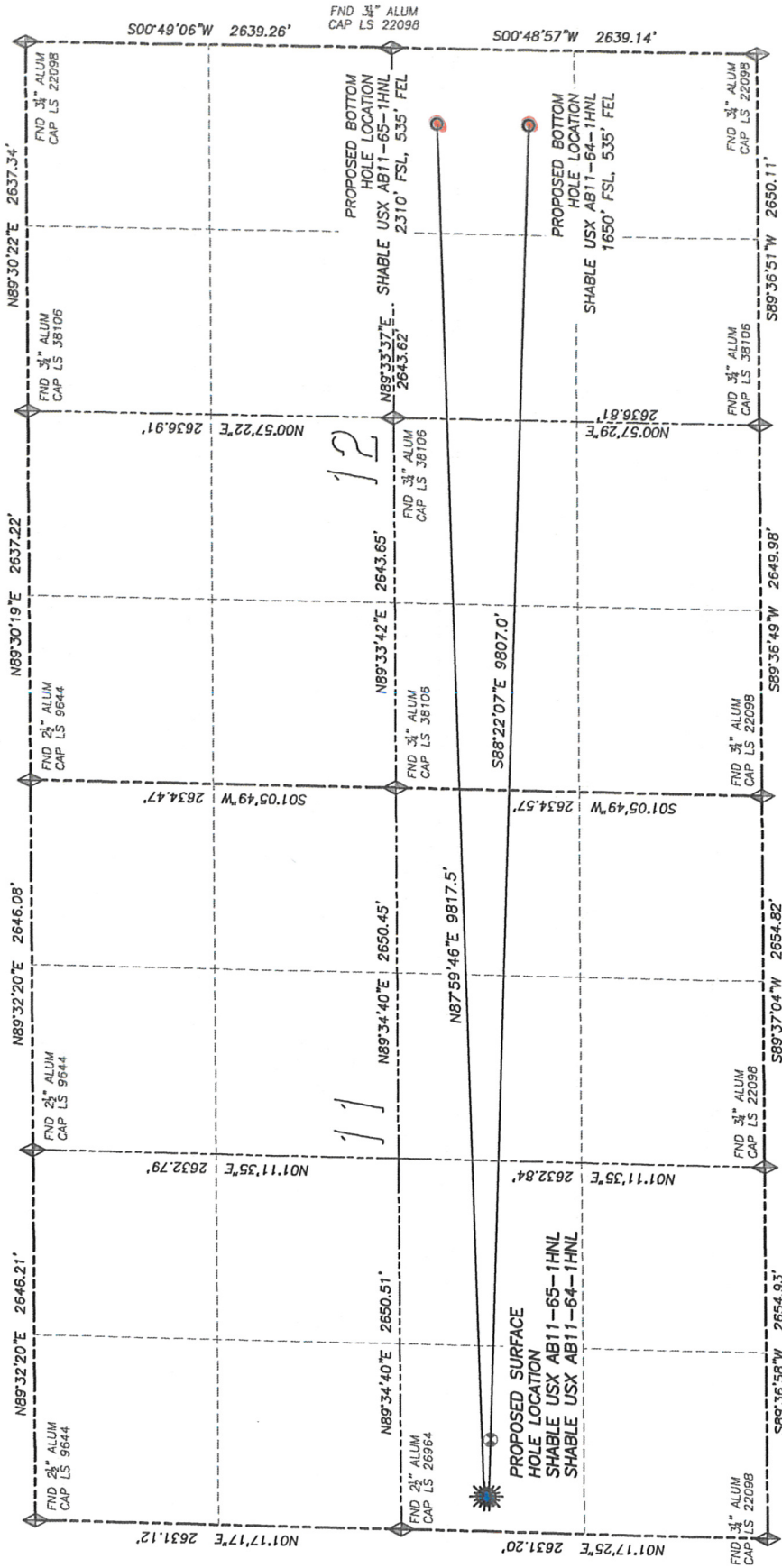


DALEY LAND SURVEYING, INC. PARKER, CO. 80134 303 953 9841

MULTI-WELL PAD - SHABLE USX AB11-65-1HNL & SHABLE USX AB11-64-1HNL

SECTION 11, TOWNSHIP 7 NORTH, RANGE 64 WEST OF THE 6TH PRINCIPAL MERIDIAN



NAD 83 LATITUDE AND LONGITUDE

SHABLE USX AB11-64-1HNL
SURFACE HOLE:
LATITUDE: N40.58518°
LONGITUDE: W104.48981°
FOOTAGE: 1650' FSL, 535' FEL
OF SECTION 12
PDOP: 1.6
QTR/QTR: NW4/SW4
PROP LINE: 250' ± WEST
NEAREST EXISTING WELL:
LATITUDE: N40.58589°
LONGITUDE: W104.52362°
410' EAST

NAD 83 LATITUDE AND LONGITUDE

SHABLE USX AB11-65-1HNL
SURFACE HOLE:
LATITUDE: N40.58602°
LONGITUDE: W104.52509°
FOOTAGE: 1650' FSL, 535' FEL
OF SECTION 12
PDOP: 1.7
QTR/QTR: NW4/SW4
PROP LINE: 250' ± WEST
NEAREST EXISTING WELL:
LATITUDE: N40.58589°
LONGITUDE: W104.52362°
412' SE

LEGEND
FOUND MONUMENT
AS DESCRIBED
PROPOSED WELL
EXISTING WELL
BOTTOM HOLE
ABANDONED WELL
CALCULATED POSITION

NOTICE: According to Colorado law you MUST commence any legal action based upon any defect in this W.L.C. within three years after you first discover such defect. In no event may any action based upon any such defect in this W.L.C. be commenced more than ten years from the date of the certification shown herein.

DALEY LAND SURVEYING, INC.

PARKER, CO. 80134

303 953 9841

MULTI-WELL PAD LOCATION DRAWING

SHABLE USX AB11-65-1HNL & SHABLE USX AB11-64-1HNL

SECTION 11, TOWNSHIP 7 NORTH, RANGE 64 WEST OF THE 6TH PRINCIPAL MERIDIAN

