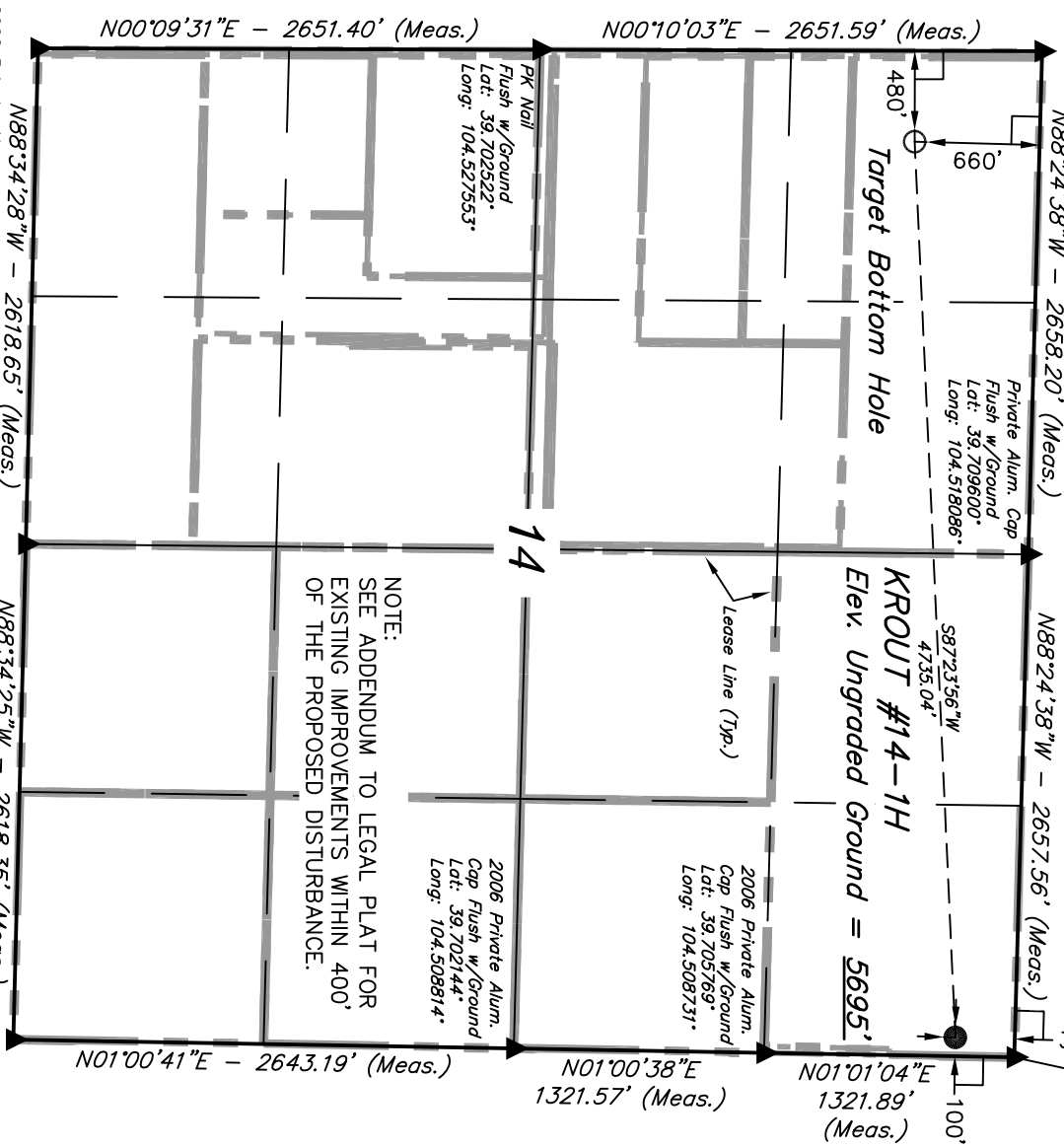


WELL LOCATION

T4S, R64W, 6th P.M.

2004 Private Alum.
Cap 0.5' Below Ground
Lat: 39.709800°
Long: 104.527528°

2012 Private Alum.
Cap 0.5' High
Lat: 39.709397°
Long: 104.508647°



NOTE:
SEE ADDENDUM TO LEGAL PLAT FOR
EXISTING IMPROVEMENTS WITHIN 400'
OF THE PROPOSED DISTURBANCE.

BENCHMARK 374 LOCATED ON THE SECTION LINE BETWEEN SECTIONS 12 & 13, T5S, R64W, 6th. P.M., TAKEN FROM 1988 PUBLISHED DATUM BY THE UNITED STATES DEPARTMENT OF THE INTERIOR, GEOLOGICAL SURVEY AS BEING 6054.61 FEET.

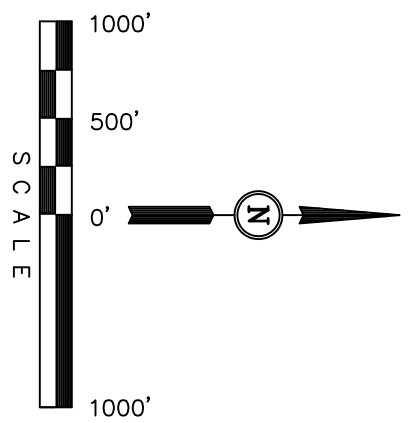
BASIS OF BEARINGS

BASIS OF BEARINGS IS A G.P.S. OBSERVATION.

BASIS OF ELEVATION

ConocoPhillips Company

Well location, KROUT #14-1H, located as shown in the NE 1/4 NE 1/4 of Section 14, T4S, R64W, 6th P.M., Arapahoe County, Colorado.



CERTIFICATE

THIS IS TO CERTIFY THAT THE ABOVE PLAT WAS PREPARED FROM FIELD NOTES OF ACTUAL SURVEYS MADE BY ME OR UNDER MY SUPERVISION AND THAT THE SAME ARE TRUE AND CORRECT TO THE BEST OF MY KNOWLEDGE AND BELIEF.

REGISTERED LAND SURVEYOR
REGISTRATION NO. 17492
STATE OF COLORADO
08-16-12

UINTAH ENGINEERING & LAND SURVEYING
85 SOUTH 200 EAST - VERNAL, UTAH 84078
(435) 789-1017

LEGEND:

- 90° SYMBOL
- PROPOSED WELL HEAD.
- SECTION CORNERS LOCATED

NAD 83 (TARGET BOTTOM HOLE)		NAD 83 (SURFACE LOCATION)	
LATITUDE = 39°42'28.62"	(39.707950)	LATITUDE = 39°42'30.76"	(39.708544)
LONGITUDE = 104°31'32.99"	(104.525831)	LONGITUDE = 104°30'32.48"	(104.509022)
NAD 27 (TARGET BOTTOM HOLE)		NAD 27 (SURFACE LOCATION)	
LATITUDE = 39°42'28.67"	(39.707964)	LATITUDE = 39°42'30.81"	(39.708558)
LONGITUDE = 104°31'31.12"	(104.525311)	LONGITUDE = 104°30'30.61"	(104.508503)

PDOP = 1.4

SCALE	DATE SURVEYED:	DATE DRAWN:
1" = 1000'	07-16-12	07-19-12

PARTY	REFERENCES
J.H. C.M. J.W.	G.L.O. PLAT
WEATHER	FILE
SUNNY	CONOCO PHILLIPS COMPANY

SECTION BREAKDOWN T4S, R64W, 6th P.M.

ConocoPhillips Company

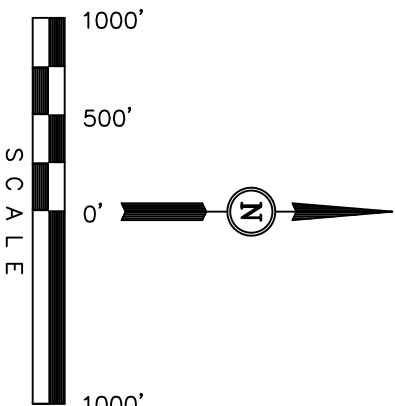
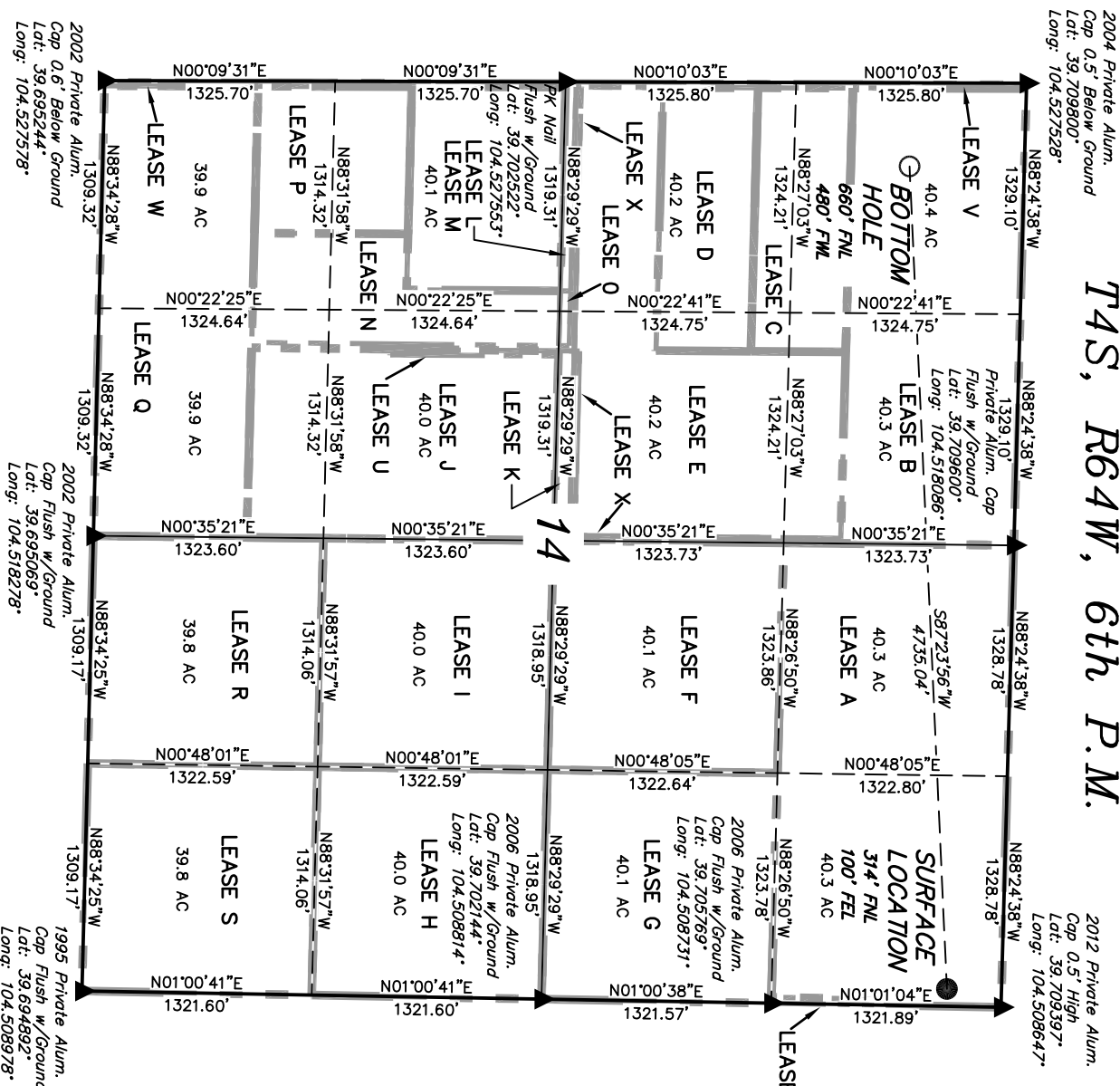
Well location, KROUT #14-1H, located as shown in the NE 1/4 NE 1/4 of Section 14, T4S, R64W, 6th P.M., Arapahoe County, Colorado.

BASIS OF ELEVATION

BENCHMARK 374 LOCATED ON THE SECTION LINE BETWEEN SECTIONS 12 & 13, T5S, R64W, 6th. P.M., TAKEN FROM 1988 PUBLISHED DATUM BY THE UNITED STATES DEPARTMENT OF THE INTERIOR, GEOLOGICAL SURVEY AS BEING 6054.61 FEET.

BASIS OF BEARINGS

BASIS OF BEARINGS IS A G.P.S. OBSERVATION.



CERTIFICATE

THIS IS TO CERTIFY THAT THE ABOVE PLAT WAS PREPARED FROM FIELD NOTES OF ACTUAL SURVEYS MADE BY ME OR UNDER MY SUPERVISION AND THAT THE SAME ARE TRUE AND CORRECT TO THE BEST OF MY KNOWLEDGE AND BELIEF.

REGISTERED LAND SURVEYOR
REGISTRATION NO. 12492
STATE OF COLORADO

UINTAH ENGINEERING & LAND SURVEYING
85 SOUTH 200 EAST - VERNAL, UTAH 84078
(435) 789-1017

LEGEND:

- 90° SYMBOL
- PROPOSED WELL HEAD.
- SECTION CORNERS LOCATED

NAD 83 (TARGET BOTTOM HOLE)		NAD 83 (SURFACE LOCATION)	
LATITUDE = 39°42'28.62" (39.707960)	LATITUDE = 39°42'30.76" (39.708544)	LATITUDE = 39°42'30.76" (39.708544)	LATITUDE = 39°42'30.76" (39.708544)
LONGITUDE = 104°31'32.99" (104.525631)	LONGITUDE = 104°30'32.48" (104.509022)	LONGITUDE = 104°30'32.48" (104.509022)	LONGITUDE = 104°30'32.48" (104.509022)
NAD 27 (TARGET BOTTOM HOLE)		NAD 27 (SURFACE LOCATION)	
LATITUDE = 39°42'28.67" (39.707964)	LATITUDE = 39°42'30.81" (39.708558)	LATITUDE = 39°42'30.81" (39.708558)	LATITUDE = 39°42'30.81" (39.708558)
LONGITUDE = 104°31'31.12" (104.525311)	LONGITUDE = 104°30'30.61" (104.508503)	LONGITUDE = 104°30'30.61" (104.508503)	LONGITUDE = 104°30'30.61" (104.508503)

SHEET 1 OF 2

SCALE 1" = 1000'

DATE SURVEYED: 07-16-12 DATE DRAWN: 07-19-12

PARTY J.H. C.M. J.W. REFERENCES G.L.O. PLAT

WEATHER SUNNY FILE CONOCO PHILLIPS COMPANY

SECTION BREAKDOWN
T4S, R64W, 6th P.M.

ConocoPhillips Company

Well location, KROUT #14-1H, located as shown in the NE 1/4 NE 1/4 of Section 14, T4S, R64W, 6th P.M., Arapahoe County, Colorado.

ACREAGES		
LEASE	OWNER	ACRES
A	ConocoPhillips Company	80.0
B	ConocoPhillips Company	60.0
C	50% CHESAPEAKE EXPL. LLC & 50% ConocoPhillips	19.0
D	ConocoPhillips Company	19.0
E	ConocoPhillips Company	54.7
F	ConocoPhillips Company	40.1
G	ConocoPhillips Company	40.1
H	ConocoPhillips Company	40.0
I	ConocoPhillips Company	40.0
J	CHESAPEAKE EXPLORATION, LLC	44.2
K	50% CHESAPEAKE EXPL. LLC & 50% ConocoPhillips	2.4
L	ConocoPhillips Company	1.6
M	ConocoPhillips Company	23.7
N	CHESAPEAKE EXPLORATION, LLC	19.1
O	50% CHESAPEAKE EXPL. LLC & 50% ConocoPhillips	0.4
P	ConocoPhillips Company	17.2
Q	ConocoPhillips Company	52.6
R	CHESAPEAKE EXPLORATION, LLC	39.8
S	CHESAPEAKE EXPLORATION, LLC	39.8
T	ConocoPhillips Company	0.5
U	ARAPAHOE COUNTY (OPEN)	0.7
V	50% ConocoPhillips & 50% ARAPAHOE CNTY (OPEN)	1.8
W	ARAPAHOE COUNTY (OPEN)	1.8
X	50% ConocoPhillips & 50% ARAPAHOE CNTY (OPEN)	2.8
		641.3

CERTIFICATE
THIS IS TO CERTIFY THAT THE ABOVE PLAT WAS PREPARED FROM FIELD NOTES OF ACTUAL SURVEYS MADE BY ME OR UNDER MY SUPERVISION AND THAT THE SAME ARE TRUE AND CORRECT TO THE BEST OF MY KNOWLEDGE AND BELIEF.

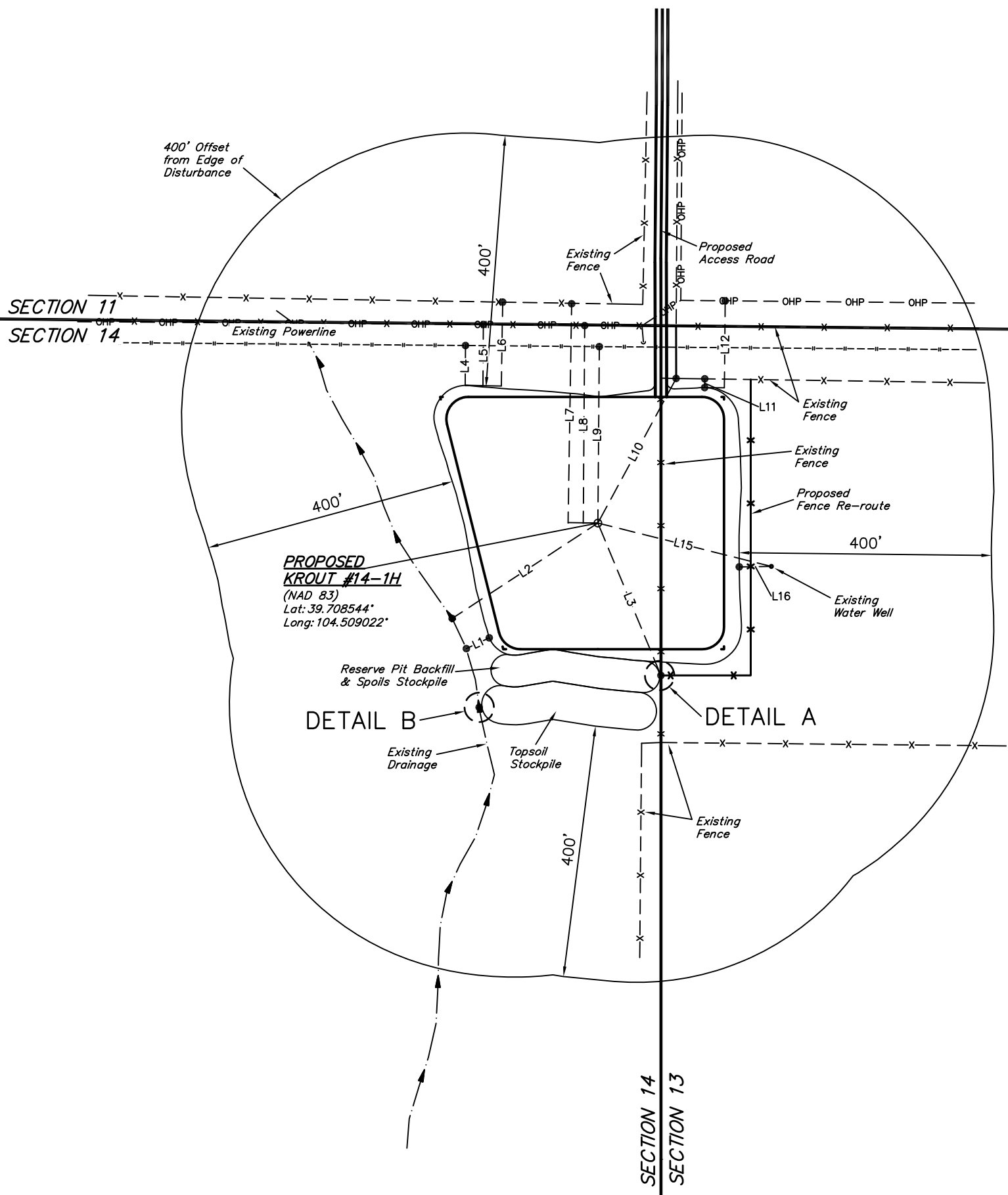
REGISTERED LAND SURVEYOR
J.H. C.M. J.W.
REGISTRATION NO. 12492
STATE OF COLORADO
08-15-12

UINTAH ENGINEERING & LAND SURVEYING
85 SOUTH 200 EAST - VERNAL, UTAH 84078
(435) 789-1017

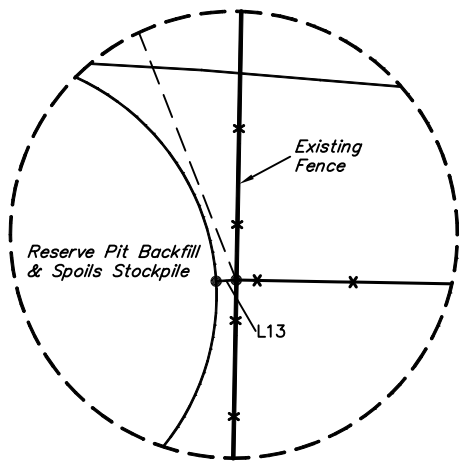
SCALE 1" = 1000'	DATE SURVEYED: 07-16-12	DATE DRAWN: 07-19-12
PARTY J.H. C.M. J.W.	REFERENCES G.L.O. PLAT	
WEATHER SUNNY	FILE CONOCO PHILLIPS COMPANY	

ConocoPhillips Company
ADDENDUM TO LEGAL PLAT FOR
KROUT #14-1H
SECTION 14, T4S, R64W, 6th P.M.
314' FNL 100' FEL

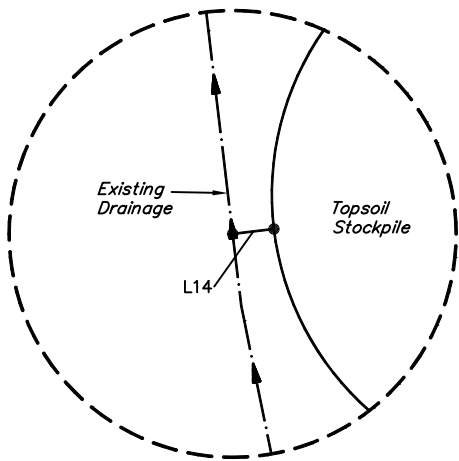
SCALE: 1" = 200'
DATE: 07-20-12
DRAWN BY: J.W.
REVISED: 09-05-12
REVISED: 09-11-12



LINE TABLE		
LINE	DIRECTION	LENGTH
L1	S66°W	40'
L2	S58°W	276'
L3	S21°E	261'
L4	N01°E	63'
L5	N01°E	97'
L6	N02°E	133'
L7	N02°E	348'
L8	N01°E	314'
L9	N01°E	280'
L10	N29°E	261'
L11	N02°E	14'
L12	N02°E	138'
L13	S87°W	2'
L14	S83°W	4'
L15	S75°E	283'
L16	N90°W	51'



DETAIL A
SCALE: NONE



DETAIL B
SCALE: NONE