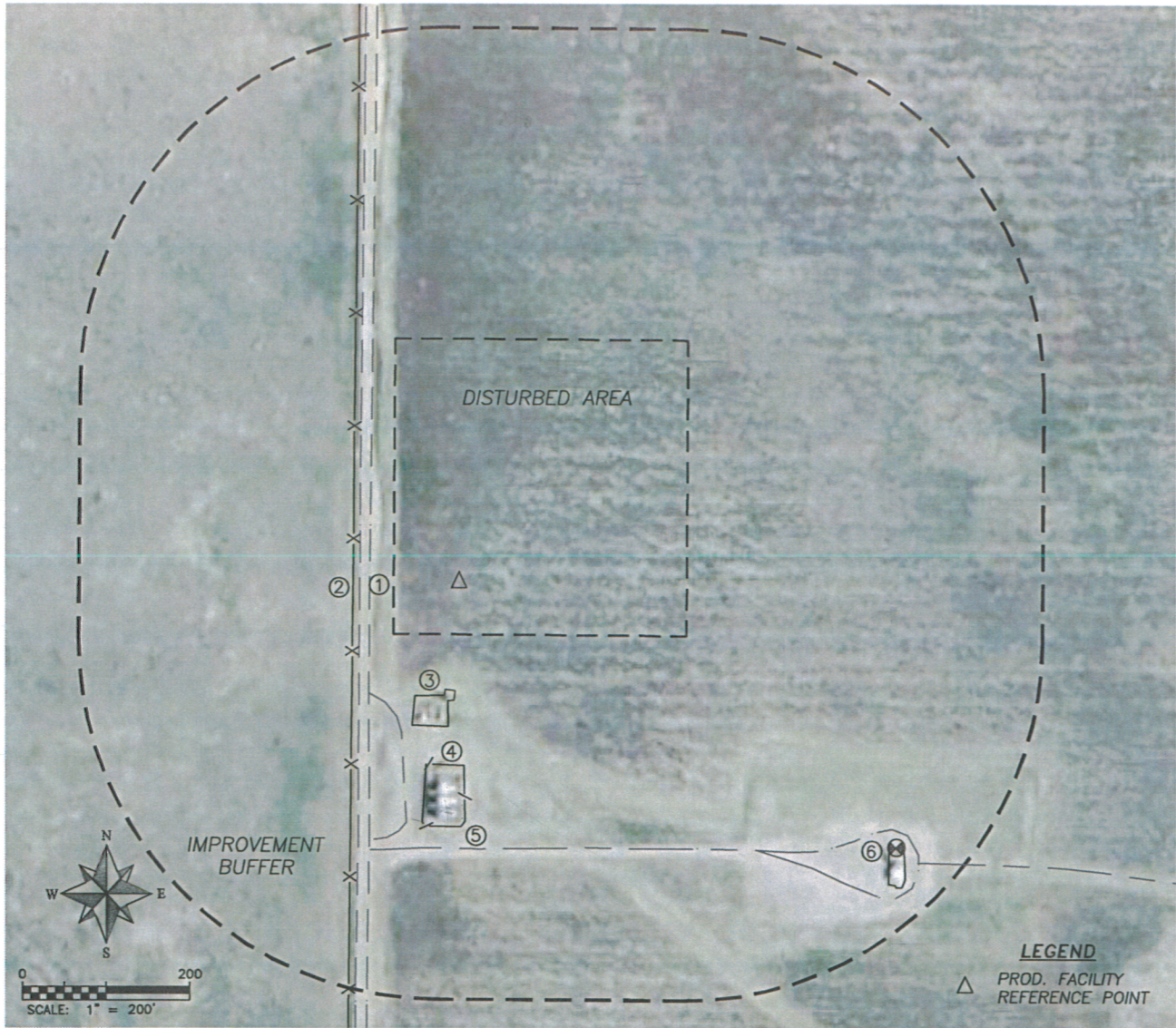


**PRODUCTION FACILITY LOCATION DRAWING**  
**SHABLE USX AB11-65-1HNL & SHABLE USX AB11-64-1HNL**

SECTION 11, TOWNSHIP 7 NORTH, RANGE 64 WEST OF THE 6TH PRINCIPAL MERIDIAN



**REFERENCE POINT LOCATION:**

LATITUDE: N40.58675°  
 LONGITUDE: W104.52550°  
 ELEV.: 4825'  
 PDOP.: 1.2  
 FOOTAGE: 2299' FSL, 131' FWL  
 QTR/QTR: NW4/SW4  
 DATE: 5/4/2012.

**DISTANCE TO NEAREST:**

BUILDING: 5280'+  
 PUBLIC ROAD: 5280'+  
 OVERHEAD UTILITY: 2990'± N  
 RAILROAD: 5280'+  
 PROP. LINE: 131'± W

**IMPROVEMENTS**

1. GRAVEL ROAD: 107'± W  
 2. FENCE: 127'± W  
 3. PROD. EQUIPMENT: 128'± S  
 4. PROD. TANKS: 217'± S  
 5. WELL ACCESS RD.: 316'± S  
 6. WELL/PUMP JACK: 608'± SE

**ASSOCIATED EXISTING WELLS:**

**ASSOCIATED NEW WELLS:**  
 SHABLE USX AB11-65-1HNL  
 SHABLE USX AB11-64-1HNL

**EXISTING FACILITIES:**

TANKS: 0  
 SEPARATORS: 0  
 EMF: 0  
 VOC: 0